

# Westland Monitor Farm Project

## Weekly Update 17-3-17

### CO comment

The past month has seen much better weather patterns and has led to improved growth rates and our ability to more effectively manage pasture. The important factors to remember at the moment remain the same – cows need to be close to target calving body condition by drying off (BCS 5 for mixed aged cows and 5.5 for rising 3 year olds) and average pasture cover (APC) sufficient to achieve pasture cover requirements at calving. There is no magic number as the amount required will be dependent on your wintering system. If wintering off the milking platform, on a support block or crop, APC at dry off can be lower as growth during June and July will contribute 350-450 kg DM/ha based on previous winter growth rate monitoring. If you are wintering on the milking platform, APC at dry off needs to be close to that required at calving. Think about these factors, assess the current situation on your farm and develop a plan for the next 8 weeks, including a feed budget, to ensure your body condition and pasture targets are achieved. Management changes put in place now will be far more subtle and easier to implement than those that might be required this time next month. These issues will be covered during the current round of discussion groups, so get along to make sure you're using the latest tools. If you are interested in viewing the full summary of monitoring results, follow this link [West Coast Monitor Farm Full Summary](#)

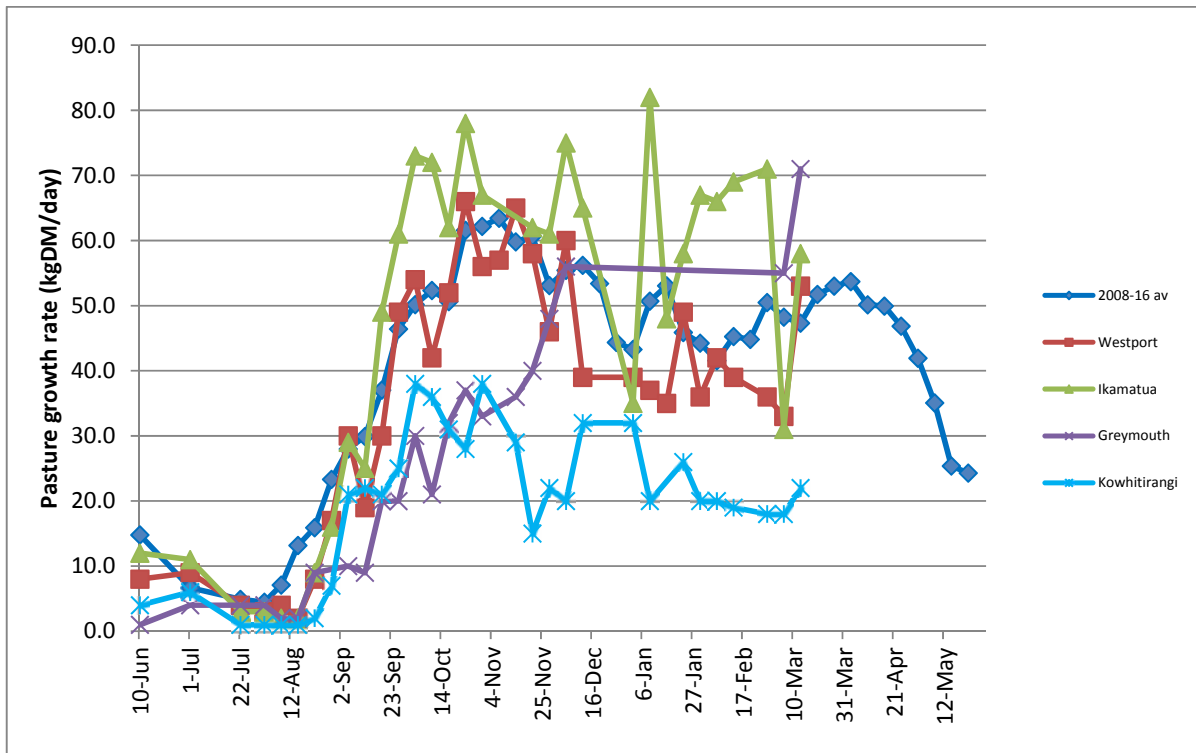
### Farm Summary

	Westport	Ikamatua	Greymouth	Kowhitirangi
Average cover (kg DM/ha)	2034	2064	2422	1848
APC (9-3-17)	1956	2026	2380	1844
Rotation length (days)	20	25	22	24
Stocking rate	2.7	2.5	2.5	2.2
Percentage in milk	100	100	100	100
Milksolids kg/cow	1.64	1.78	1.4	1.28
Milksolids kg/ha	4.5	4.5	3.5	2.9
MS/cow (season to date)	316	329	268	269
MS/ha (season to date)	924	877	594	642
N (kg/ha) year to date	139	180	162	50
Current N application rate kg N/ha	15	20	25	
	10 Mar	10 Mar		10 Mar
DM%	15.2	13.2		19.3
Pasture ME	12.2	12.5		12
Pasture NDF	52.3	41.2		51.2
Pasture CP	28.3	31.3		22.1
Target Intake (kg DM/cow/d)	18	20	17	17
Supplement (kg/cow/day)	2.0	4.0	2.0	1.5
Soil temperature (°C)	17.5	16.5	14.8	16.8

Growth Rate (kg DM/day)	53	58	71	22
Rainfall	30	45	27.5	25
Conditions for farmwalk	Raining warm	Shower fine		Fine & warm
Comments				

NB: pasture quality data are for 1 sample collected from each farm

### Weekly Pasture Growth Rates



Weekly Soil Temperature

