

Westland Monitor Farm Project

Weekly Update 24 February 2017

CO comment

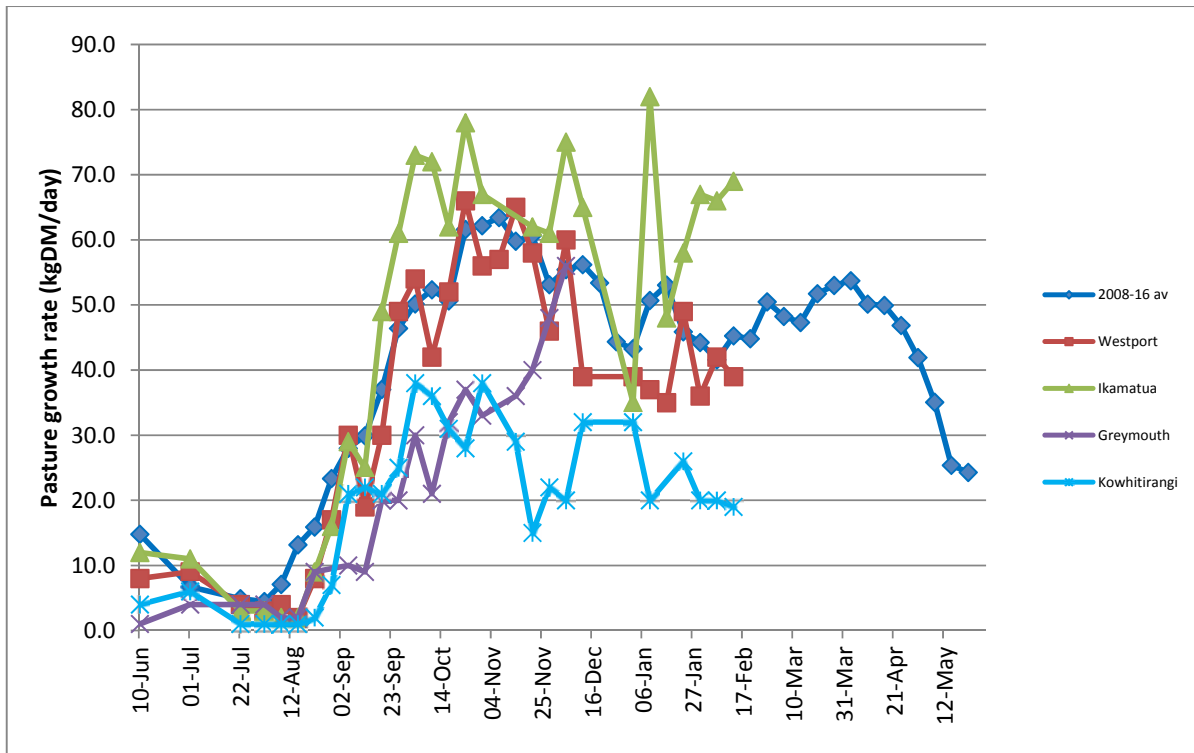
Whilst there has been a welcome respite from the seemingly continuous wet conditions, the issues from the wet will not disappear immediately. To date, the amount of supplements harvested and the problems of establishing winter crops are pointing towards lowered feed reserves heading into the winter period. Attention will now need to go on ensuring that decisions made through the autumn build feed reserves – perhaps even allowing some surplus feed to be harvested through the autumn, are ensure that there will no residual effects carried into next season. During autumn, deciding when to extend the rotation, determining what the appropriate APC is for each stage of the autumn, whilst balancing decisions around early culling, alternative milking intervals etc can be tricky. The Autumn Rotation Planner, similar to the Spring Rotation Planner, can help farmers keep track of their APC and rotation length through this period and ensure that identified targets are achieved. Use of the Autumn Rotation Planner and its use will be the focus of discussion groups to be run through March. For information on the discussion group to be held in your district go to <https://www.dairynz.co.nz/events/?region=5454>

Farm Summary

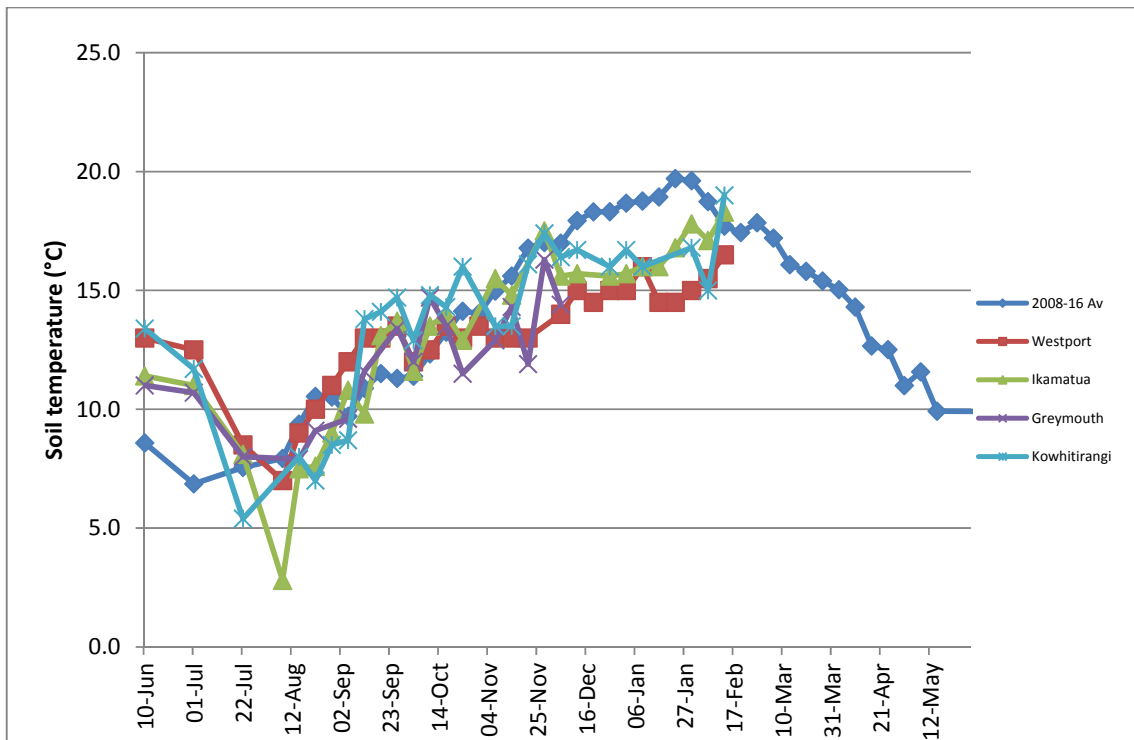
	Westport	Ikamatua	Greymouth	Kowhitirangi
Average cover (kg DM/ha)	2030	2141		1846
APC (17 February)	2060	2104		1870
Rotation length (days)	18.5	24		24
Stocking rate	2.7	2.6		2.3
Percentage in milk	100	100		100
Milksolids kg/cow	1.64	1.72		1.25
Milksolids kg/ha	4.5	4.5		2.8
MS/cow (season to date)	288	294		244
MS/ha (season to date)	843	784		582
N (kg/ha) year to date	123	163		50
Current N application rate kg N/ha	20	20		None
	6 Feb	7 Feb		8 Feb
DM%	12.2	13.7		14.4
Pasture ME	>12.7	>12.7		>12.7
Pasture NDF	47.9	46.6		48.9
Pasture CP	21.6	25.8		24.6
Target Intake (kg DM/cow/d)	18	20		17
Supplement (kg/cow/day)	1.0	2.0		3.0
Soil temperature (°C)	16.5	18.3		19.0
Growth Rate (kg DM/day)	39	69		19
Rainfall	34	-		20
Conditions for farmwalk				
Comments	Don't say anything but maybe farm drying out !!!	No rain! Farm looks as if it may go dry		Fine day farm maybe drying out. Long way to go though

NB: pasture quality data are for 1 sample collected from each farm

Weekly Pasture Growth Rates

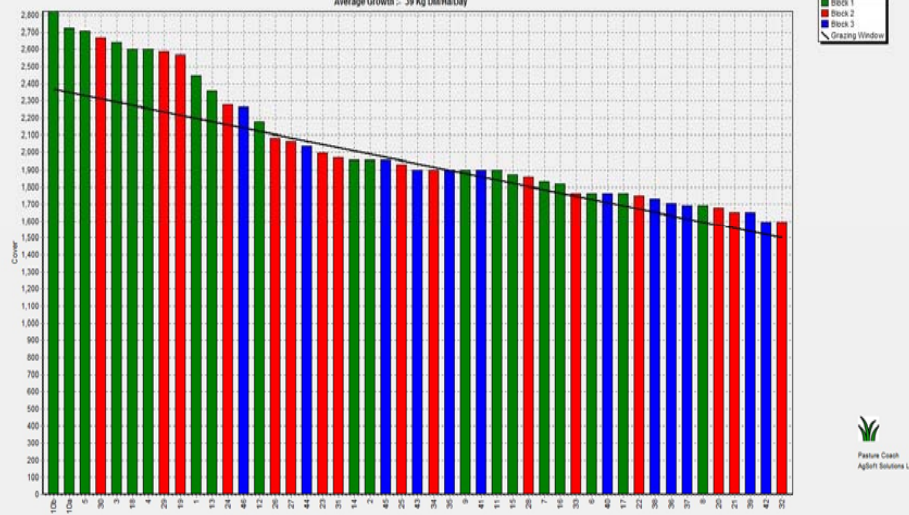


Weekly Soil Temperature



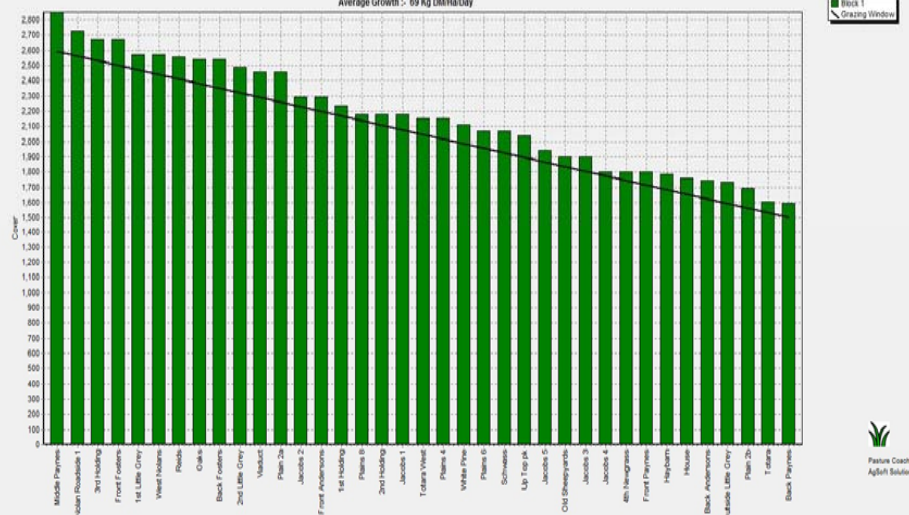
Westport

Farm Name: ADDIAN & CHERYL GALLAGHER
 Date Read : 20/02/2017
 Average Cover : 2030 Kg DM/ha
 Average Growth : 39 Kg DM/ha/Day



Ikamatua

Farm Name: ANDREW JOU, MBRIN
 Date Read : 21/02/2017
 Average Cover : 2141 Kg DM/ha
 Average Growth : 69 Kg DM/ha/Day



Greymouth

Kowhitirangi

Farm Name: TANE & RACHEL LITTLE
 Date Read : 22/02/2017
 Average Cover : 1946 Kg DM/ha
 Average Growth : 19 Kg DM/ha/Day

