

# Westland Monitor Farm Project

Weekly Update 27 April 2017

## CO comment

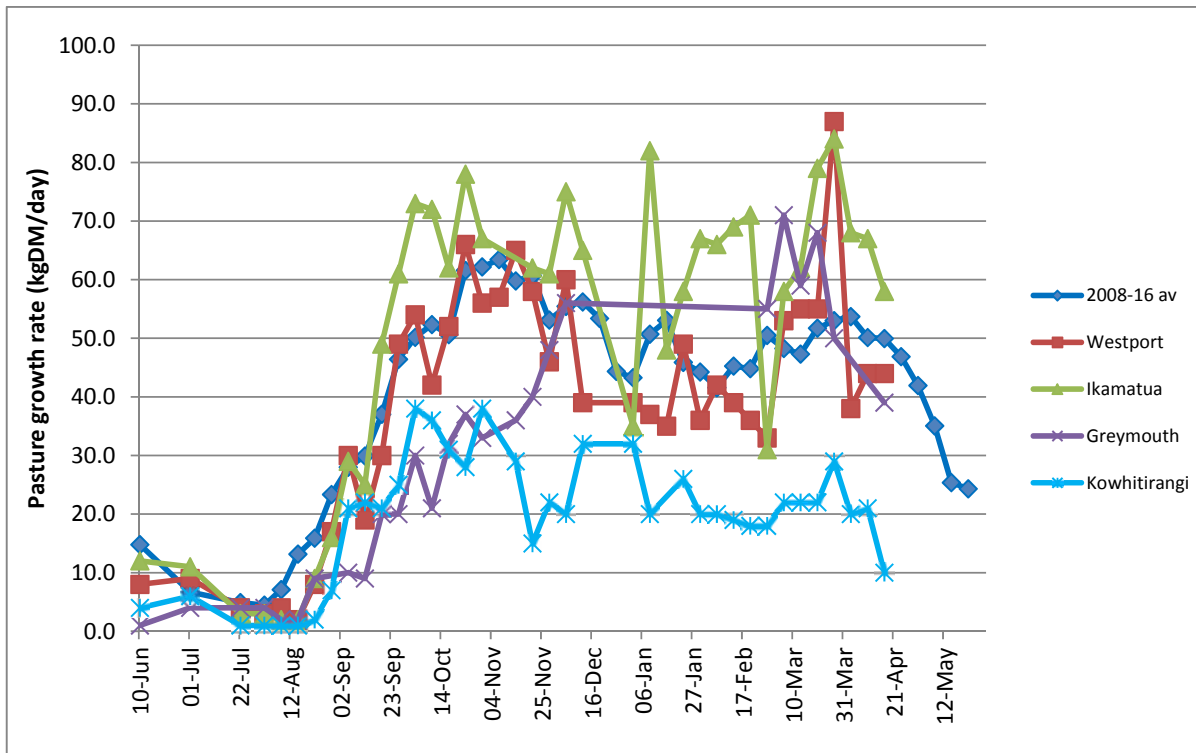
Cooler growing conditions will bring a corresponding slowing in pasture growth rates. Carefully consider the urge to capture those last few kilograms of milksolids this season. Be careful, do your homework and make sure you have the feed on hand to achieve this without compromising the farm setup for next season. Current production levels are very unlikely to meet the cost of the extra feed if it needs to be purchased to replace feed required for winter and early spring. Stretching your feed supply too thin will be at the cost of cow condition heading into winter and further forward, the spring and calving. The focus needs to be on setting the farm up adequately for next season – check your feed budget to keep you on track, whatever decision you end up making. If you are interested in viewing the Expanded Weekly Summary of the monitoring results, follow this link [West Coast Monitor Farm Full Summary](#)

## Farm Summary

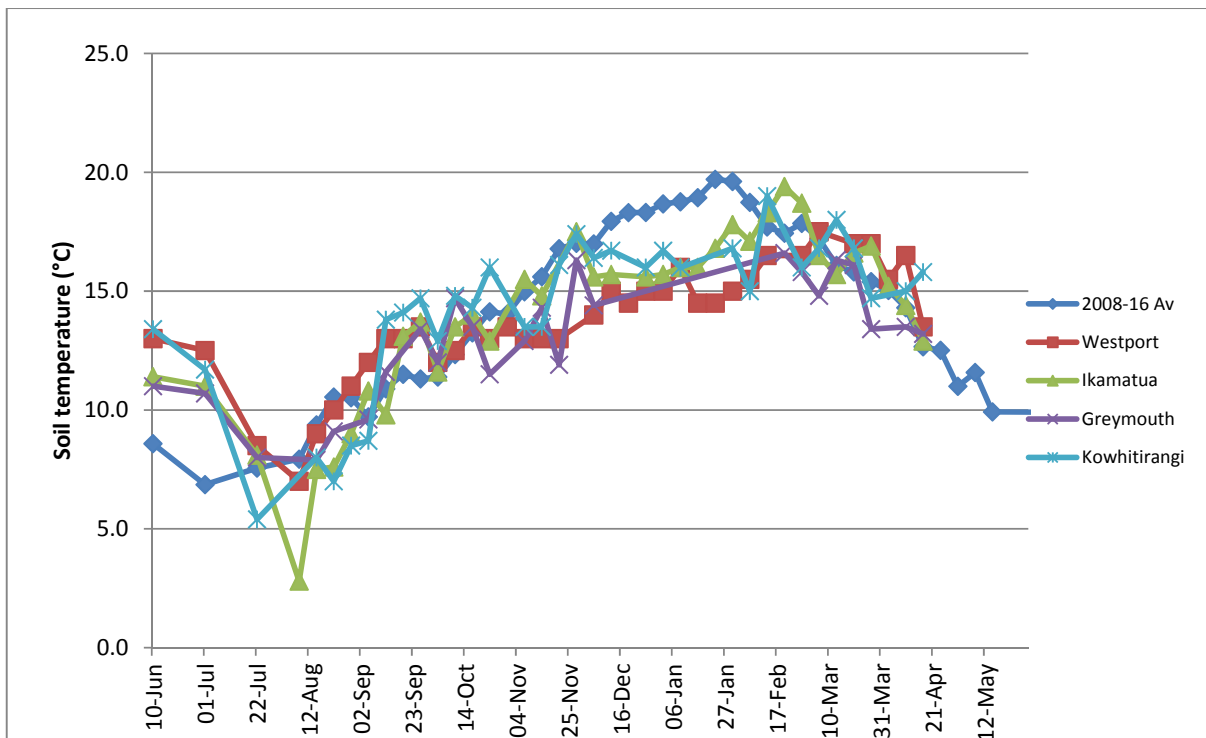
	Westport	Ikamatua	Greymouth	Kowhitirangi
Average cover (kg DM/ha)	2036	2133	2236	1912
APC (20 April 2017)	2072	2148	2290	1964
Rotation length (days)	23	26	30	
Stocking rate	2.9	2.7	2.5	
Percentage in milk	83	94	91	
Milksolids kg/cow	1.36	1.46	1.15	
Milksolids kg/ha	3.4	3.7	2.6	
MS/cow (season to date)	397	421	407	
MS/ha (season to date)	1162	1123	1025	
N (kg/ha) year to date	166	228	204	50
Current N application rate kg N/ha	15,20	25	25	None
	3 April	4 April		5 April
DM%	15.1	11.7		15.1
Pasture ME	12.1	>12.7		12.1
Pasture NDF	52.2	48.1		52.2
Pasture CP	27.6	33.9		27.6
Target Intake (kg DM/cow/d)	18	18	18	
Supplement (kg/cow/day)	1.5	1.5	6.0	
Soil temperature (°C)	13.5	12.9	13.2	15.8
Growth Rate (kg DM/day)	44	58	39	10
Rainfall	0.0	0.0	3.0	
Conditions for farmwalk	Fine, warm	Fog, fine, warm		Fine, warm
Comments				

NB: pasture quality data are for 1 sample collected from each farm

### Weekly Pasture Growth Rates

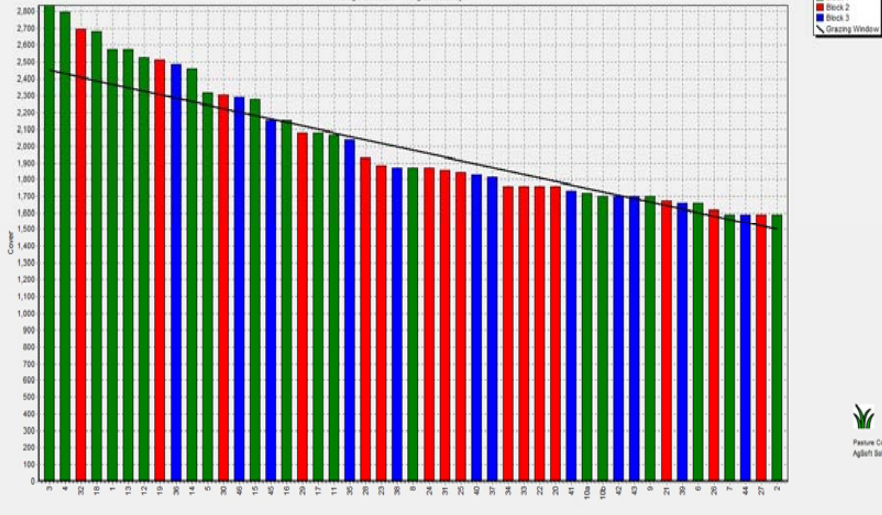


### Weekly Soil Temperature



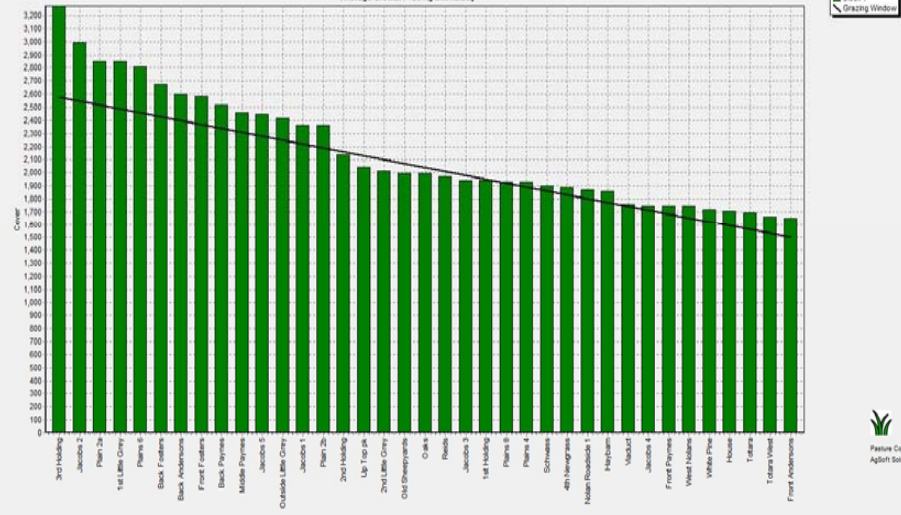
### Westport

Farm Name: ADRIAN & CHERYL GALLAGHER  
 Date Read: 24/04/2017  
 Average Cover: 2036 Kg DM/Ha  
 Average Growth: 44 Kg DM/Ha/Day



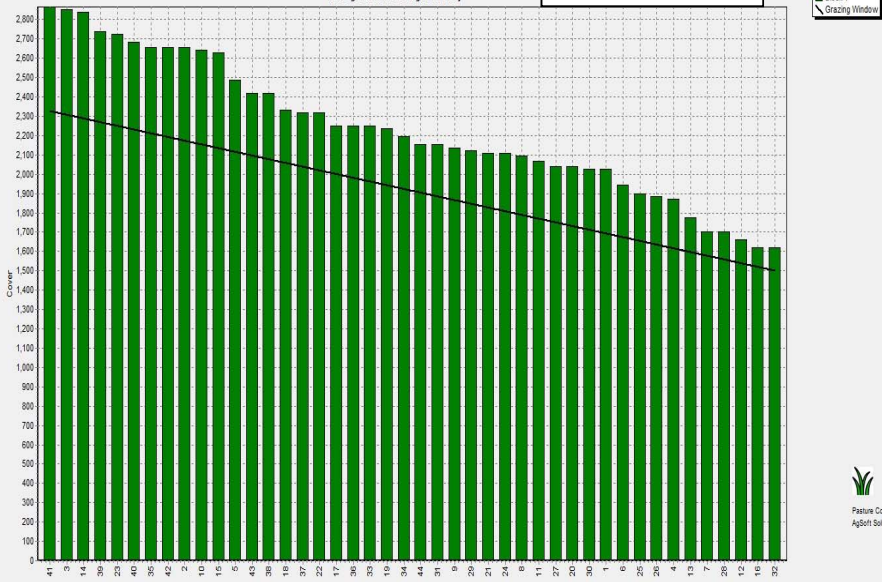
### Ikamatua

Farm Name: ANDREW, JOJO, MIYUN  
 Date Read: 25/04/2017  
 Average Cover: 2133 Kg DM/Ha  
 Average Growth: 58 Kg DM/Ha/Day



### Greymouth

Farm Name: ANDREW ROBB  
 Date Read: 26/04/2017  
 Average Cover: 2236 Kg DM/Ha  
 Average Growth: 39 Kg DM/Ha/Day



### Kowhitirangi

Farm Name: TANE & RACHEL LITTLE  
 Date Read: 26/04/2017  
 Average Cover: 1912 Kg DM/Ha  
 Average Growth: 10 Kg DM/Ha/Day

