

Westland Monitor Farm Project

Weekly Update 4 May 2017

CO comment

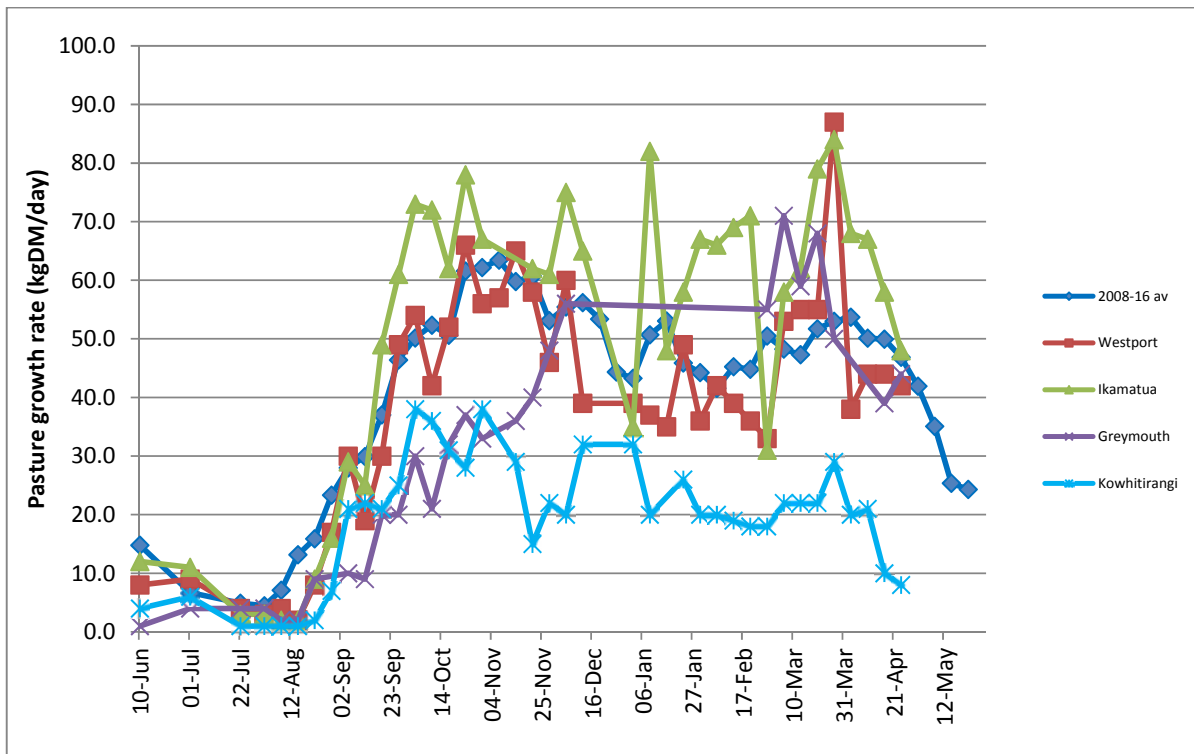
On the whole, pasture growth rates have been very good since the long, wet period ended, but be careful not to take the continued growth for granted. With some areas having already experiencing frosts, soil temperatures will be declining. Continue to revise and update your autumn feed budget to reflect the situation on your farm and ensure you have sufficient feed to continue milking if that is what you choose to do. Revisit your winter feed budget to confirm feed availability. If winter feed levels are going to be tight, consider setting your wintering mobs up based on BCS and feed individual groups according to the BCS gain that is required. Your focus now should be on setting up the farm for next season and achieving target pasture covers and body condition score at dry off and calving. If drying cows off in smaller groups make sure they are adequately marked and there is no opportunity for them to re-enter the milking herd, especially if dry cow therapy is being used. If you are interested in viewing the Expanded Weekly Summary of the monitoring results, follow this link [West Coast Monitor Farm Full Summary](#).

Farm Summary

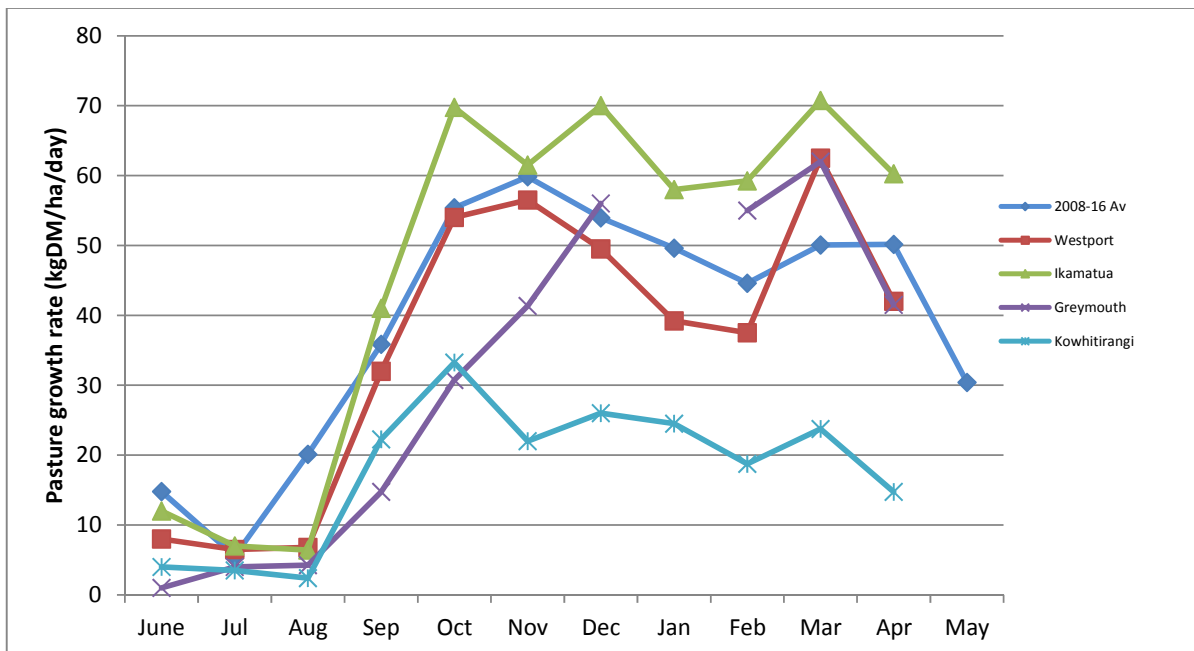
	Westport	Ikamatua	Greymouth	Kowhitirangi
Average cover (kg DM/ha)	1989	2124	2227	1860
APC (27 April)	2036	2133	2236	1912
Rotation length (days)	23	28	30	43
Stocking rate	2.4	2.5	2.3	2.0
Percentage in milk	81	95	91	85
Milksolids kg/cow	1.40	1.46	1.09	1.00
Milksolids kg/ha	3.3	3.6	2.5	2.0
MS/cow (season to date)	371		285	312
MS/ha (season to date)	1085		718	744
N (kg/ha) year to date	170	222	209	50
Current N application rate kg N/ha	20	25	30	None
	3 April	4 April		5 April
DM%	15.1	11.7		15.1
Pasture ME	12.1	>12.7		12.1
Pasture NDF	52.2	48.1		52.2
Pasture CP	27.6	33.9		27.6
Target Intake (kg DM/cow/d)	18	18	18	16
Supplement (kg/cow/day)	1.5	1.5	6.0	1.0
Soil temperature (°C)	12.0	13.0	12.4	13.6
Growth Rate (kg DM/day)	42	48	44	8
Rainfall	34		31	100
Conditions for farmwalk	Fine. Cold start, close to frost	Fine, cold		Heavy rain
Comments				

NB: pasture quality data are for 1 sample collected from each farm

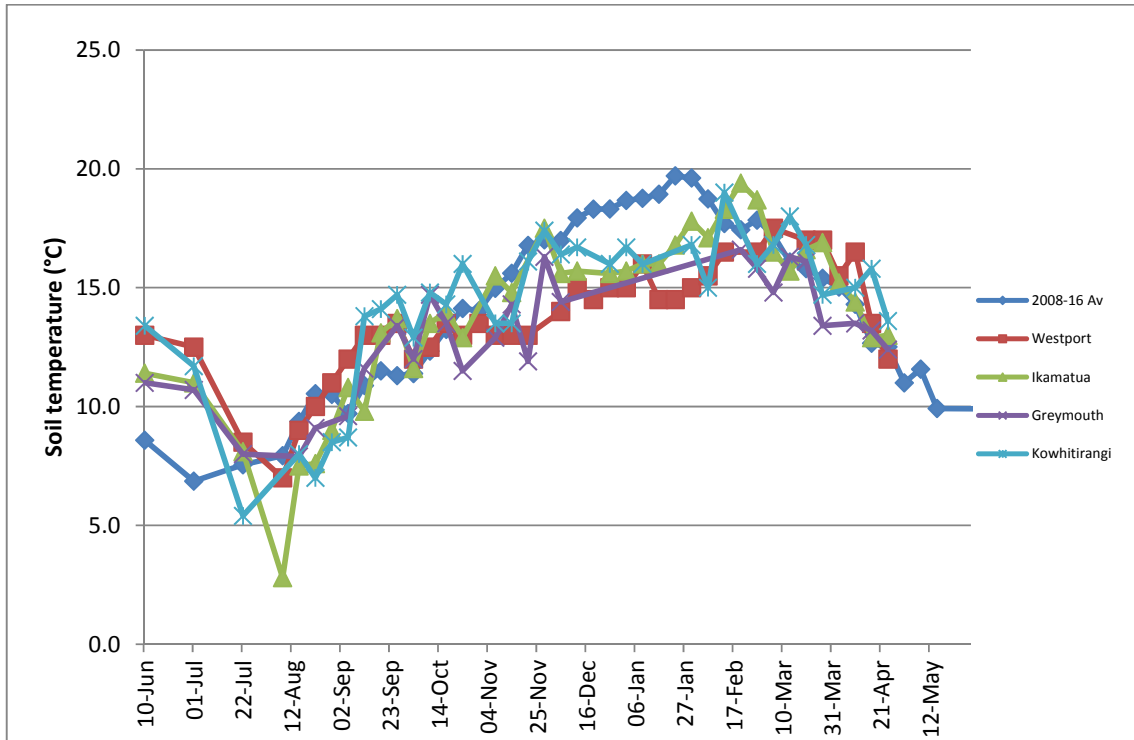
Weekly Pasture Growth Rates



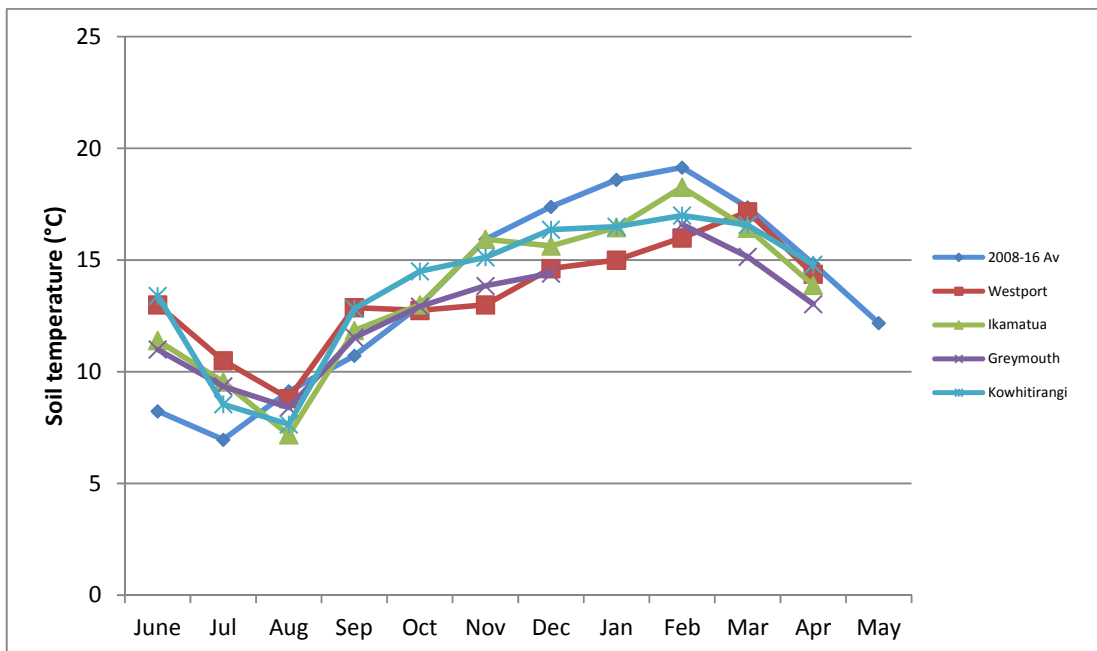
Monthly Pasture Growth Rates



Weekly Soil Temperature

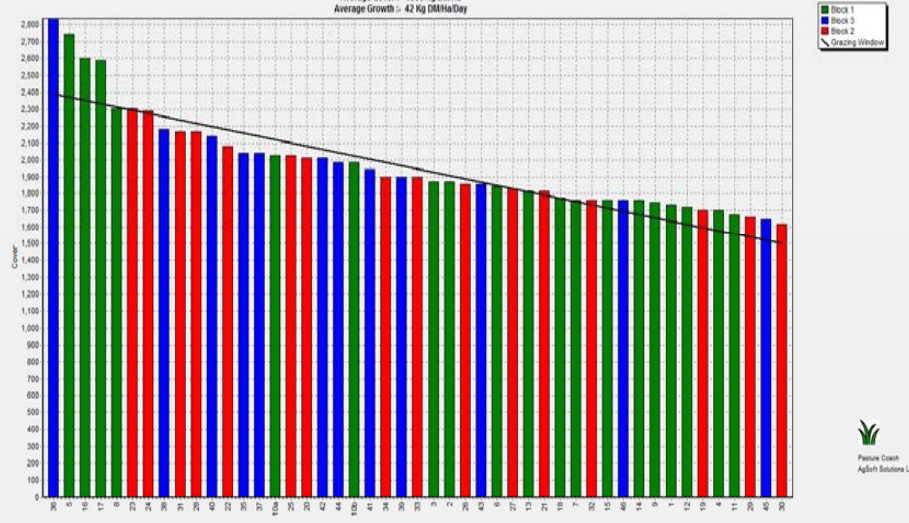


Monthly Soil Temperature



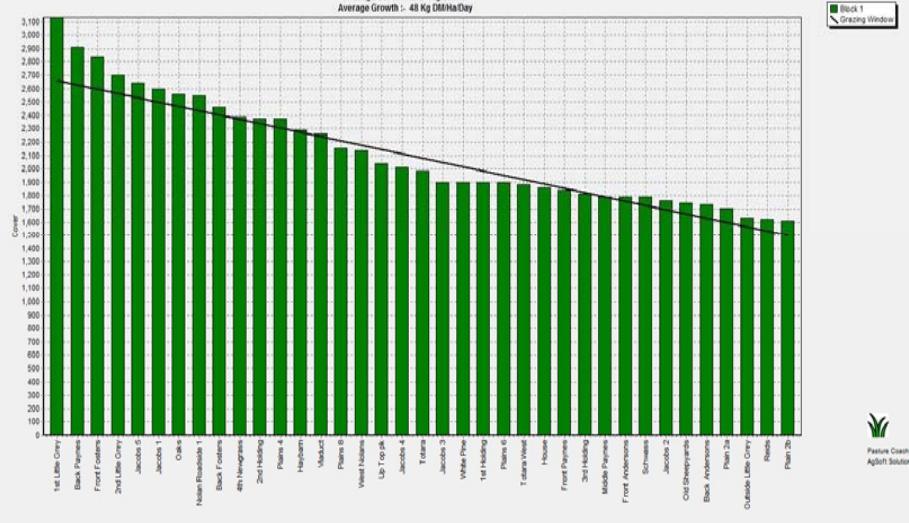
Westport

Farm Name: ADRIAN & CHERYL GALLAGHER
 Date Read: 18/5/2017
 Average Cover: 1989 Kg DM/Ha
 Average Growth: 42 Kg DM/Ha/Day



Ikamatua

Farm Name: ANDREW, ANJ, MBRIN
 Date Read: 2/05/2017
 Average Cover: 2124 Kg DM/Ha
 Average Growth: 48 Kg DM/Ha/Day



Greymouth

Farm Name: ANDREW ROBB
 Date Read: 3/05/2017
 Average Cover: 2227 Kg DM/Ha
 Average Growth: 44 Kg DM/Ha/Day



Kowhitirangi

Farm Name: TANE & RACHEL LITTLE
 Date Read: 3/05/2017
 Average Cover: 1860 Kg DM/Ha
 Average Growth: 8 Kg DM/Ha/Day



