

Westland Monitor Farm Project

Weekly Update 3rd March 2017

CO comment

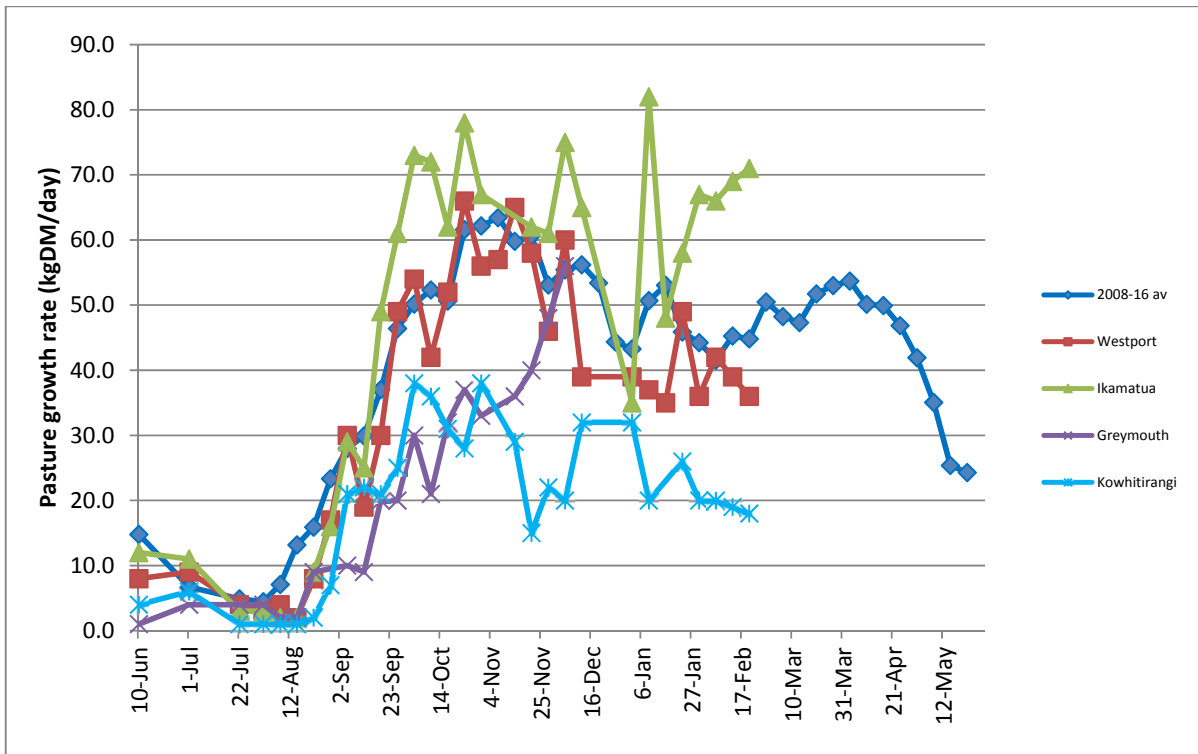
Now is a good time to start making sure you are transferring pasture through into the autumn/winter period by extending the round length. Reducing stock demand on pasture can be achieved by either using supplement (if stocks are sufficient) or culling cows. Identify any lighter cows, particularly 2 and 3 years old, and prioritize feed for this group in order to get them to the desired condition score target at calving (5 for cows and 5.5 for heifers and second calvers). Action taken now whilst pasture growth rates are have picked up will generate better results than waiting until pasture growth rates start declining more rapidly and more significant action needs to be taken. If you are interested in viewing the full summary of monitoring results, follow this link [West Coast Monitor Farm Full Summary](#)

Farm Summary

	Westport	Ikamatua	Greymouth	Kowhitirangi
Average cover (kg DM/ha)	1993	2129	2386	1845
APC (27 February)	2030	2141	-	1846
Rotation length (days)	20	24	22	24
Stocking rate	2.7	2.6	2.5	2.3
Percentage in milk	100	100	100	100
Milksolids kg/cow	1.58	1.72	1.55	1.25
Milksolids kg/ha	4.3	4.5	3.9	2.9
MS/cow (season to date)	297	306	245	252
MS/ha (season to date)	870	815	545	602
N (kg/ha) year to date	129	168	143	50
Current N application rate kg N/ha	20	20	25	None
	10 Feb	7 Feb		8 Feb
DM%	12.2	13.7		14.4
Pasture ME	>12.7	>12.7		>12.7
Pasture NDF	47.9	46.6		48.9
Pasture CP	21.6	25.8		24.6
Target Intake (kg DM/cow/d)	18	20		17
Supplement (kg/cow/day)	1.0	2.0		3.0
Soil temperature (°C)	-	19.4	16.6	-
Growth Rate (kg DM/day)	36	71	-	18
Rainfall	34	-		20
Conditions for farmwalk	-	-	3	-
Comments	Hot, farm drying out !!!	Hot /fine water on		No rain farm has no surface water

NB: pasture quality data are for 1 sample collected from each farm

Weekly Pasture Growth Rates



Weekly Soil Temperature

