

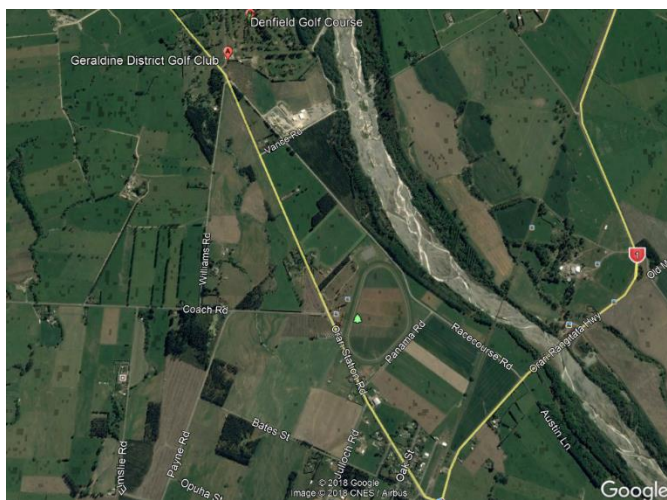


**MPI-SFF Project: Fodder Beet Agronomic Solutions (FBAS)**

**Nitrogen and potassium fertiliser effects on plant growth and crop health**

**Location: Geraldine District Golf Club, 10 Orari Back Rd, Orari, South Canterbury**  
**Turn off SH 1 at Orari Station Road, then a right on Orari Back Road**

**Date: Monday 2 July 2018, (1.00 pm – 2.30 pm)**



**Programme**

- Background, progress and general issues with fodder beet production.
- Presentation of results of second season (2017-18) of nitrogen and potassium fertiliser trials, and comparison with Year 1 (2016-17)
- Productivity and uptake of nutrients.
- Crop monitoring for plant health (plant cover, disease, insects and weeds).
- Discussion with industry partners and farmers on research needs for fodder beet production, issues with crop establishment and general agronomic practice.

**Contact for more information**

Farmer:	Haden Batty 0274 477 729
Plant & Food Research:	Shane Maley 0274 985 408, Emmanuel Chakwizira 0272 985 072 John de Ruiter 0274 772 172
Ravsdown:	Chris Lowe 021 946 896
Ballance Agri-Nutrients:	Aimee Dawson 0275 097 458
Cropmark Seeds:	Tim Cookson 0274 344 458
FAR:	Ivan Lawrie 0274 328 245