

Westland Monitor Farm Project

Weekly Update as at week ending Wednesday 12 August 2020

CO Comment

At DairyNZ West Coast HQ there has been a lot of buzz about the new DairyNZ project called Step Change. You will hear more on this over the coming months, but it is timely to give a brief overview of the focus of this project.

DairyNZ's Step Change project will help farmers Improve profit AND reduce footprint. The project will examine how farmers can reduce GHG, improve water quality, and improve profitability.

This five-year project aims to ensure that by 2025 farm businesses are profitable, are on track to meet 10% methane target in 2030, are working toward meeting regulated N limits, and farmers have confidence their business and future.

This project is designed to protect our future by being the best-positioned farmers in the world to supply the growing demand for natural and sustainably produced dairy nutrition.

There are 3 key strategies to this which are...

- Help farmers consider what their business looks like in the future so their initiatives today are consistent with their long-term goals and the environment that they will be operating in
- Define measures to help farmers establish where there is the opportunity for them to improve environmental and financial performance, and to track progress
- Create the pathways for building capability with DairyNZ staff, farmers, and partners in these focus areas.

There is no one size that fits all, so the approach is to ensure that individual farmer needs are understood and catered for in developing change initiatives. Project activity is being integrated with existing work to build greater awareness and new behaviours around improving feed management and other mitigations. We will be collaborating with farmers and industry partners to ensure consistent messaging that is practical, relevant and evidence based.

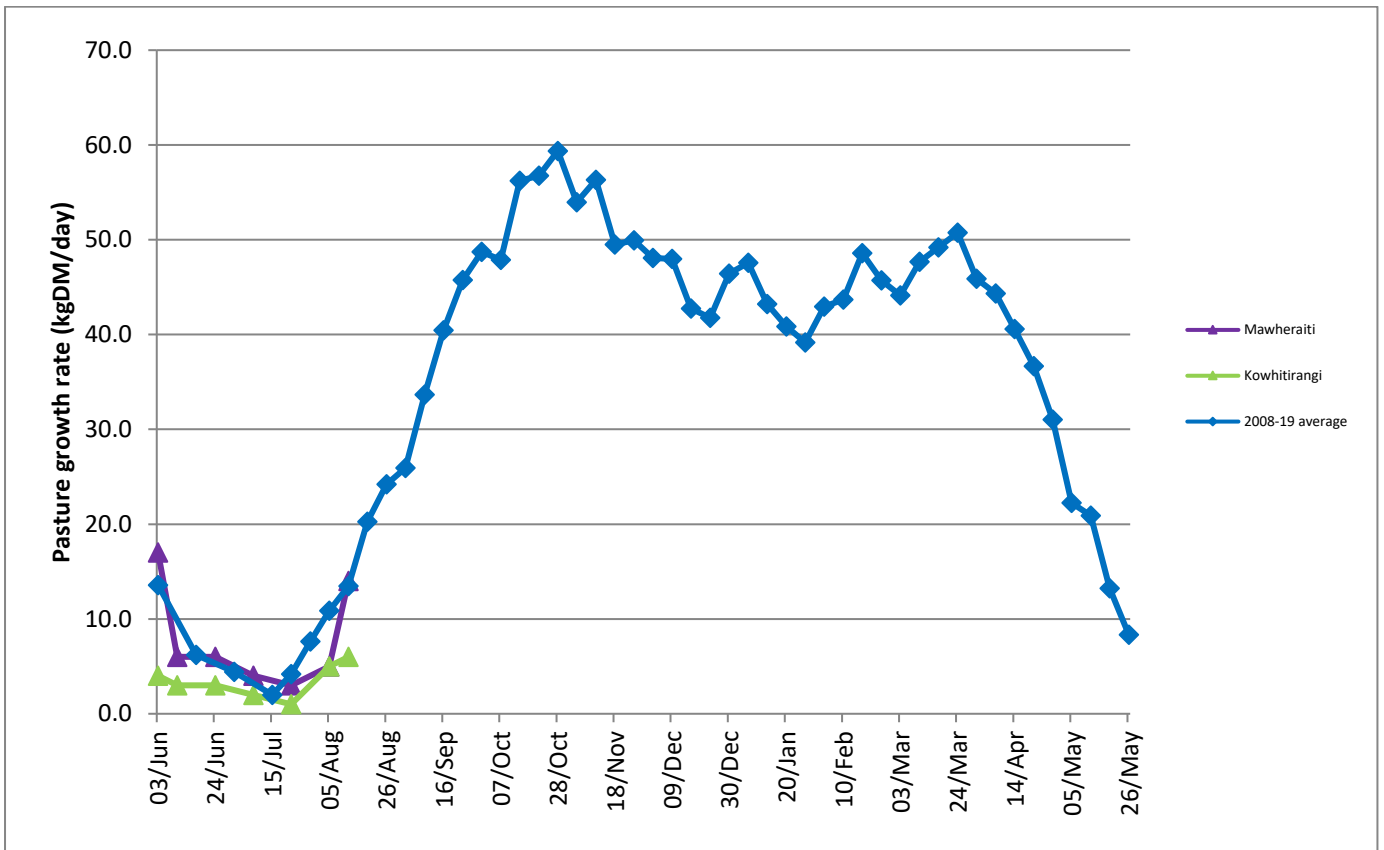
There are some great tools on the web at <https://www.dairynz.co.nz/environment/step-change/> to get started in knowing your numbers. Have a look around and as always you can get [in touch with me](#) if you have any questions.

Farm Summary

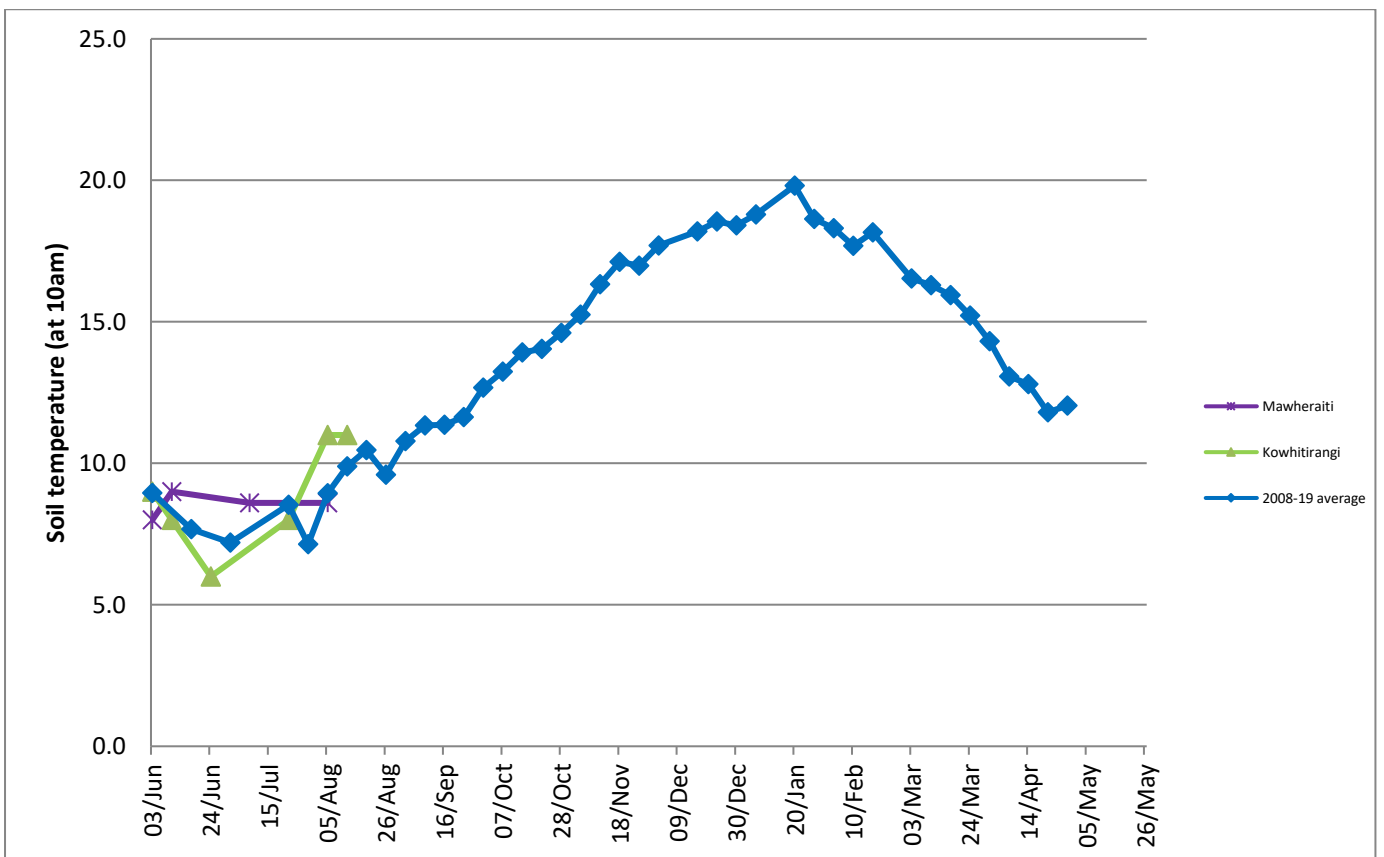
	Mawheraiti	Kowhitirangi
Average cover (kg DM/ha)	2245	1922
APC (5 August)	2202	1892
Rotation length (days)		100
Stocking rate		
Percentage in milk	0	0
Milksolids kg/cow	6	-
Milksolids kg/ha	16	-
MS/cow (season to date)	-	-
MS/ha (season to date)	-	-
N (kg/ha) year to date	35	0
Current N application rate kg N/ha	30	-
	6 Jul	7 Jul
DM%	14.8	11.8
Pasture ME	12.6	12.3
Pasture NDF	37.1	44.6
Pasture CP	24.2	29.4
Target Intake (kg DM/cow/d)	17	
Supplement (kg/cow/day)	4.3	2
Soil temperature (°C)		11
Growth Rate (kg DM/day)	14	6
Rainfall		48
Conditions for farmwalk	Lovely fine day	Warm and fine, lovely day

NB: pasture quality data are for 1 sample collected from each farm

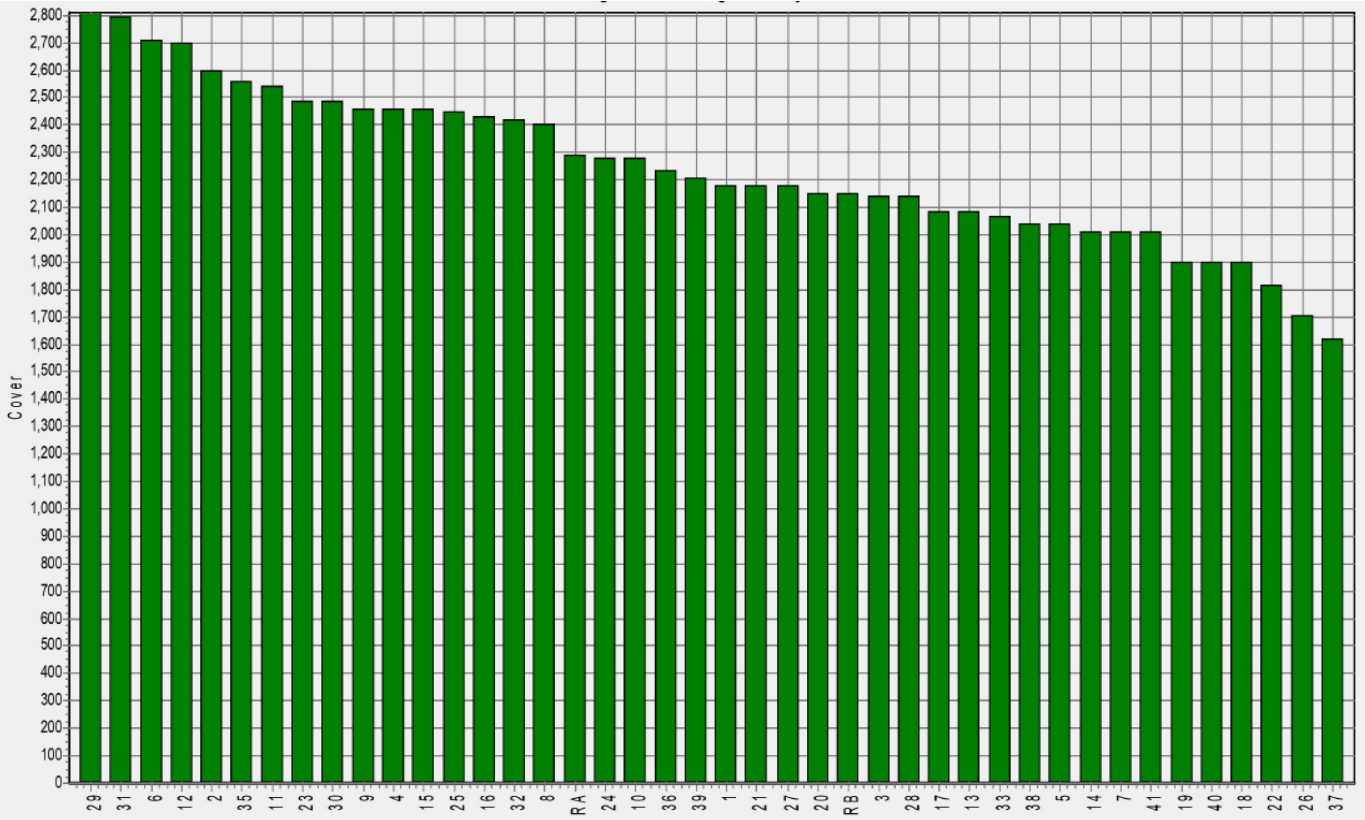
Weekly Pasture Growth Rates



Weekly Soil Temperature



Mawheraiti



Kowhitirangi

