

Lincoln University Dairy Farm - Farm Walk notes

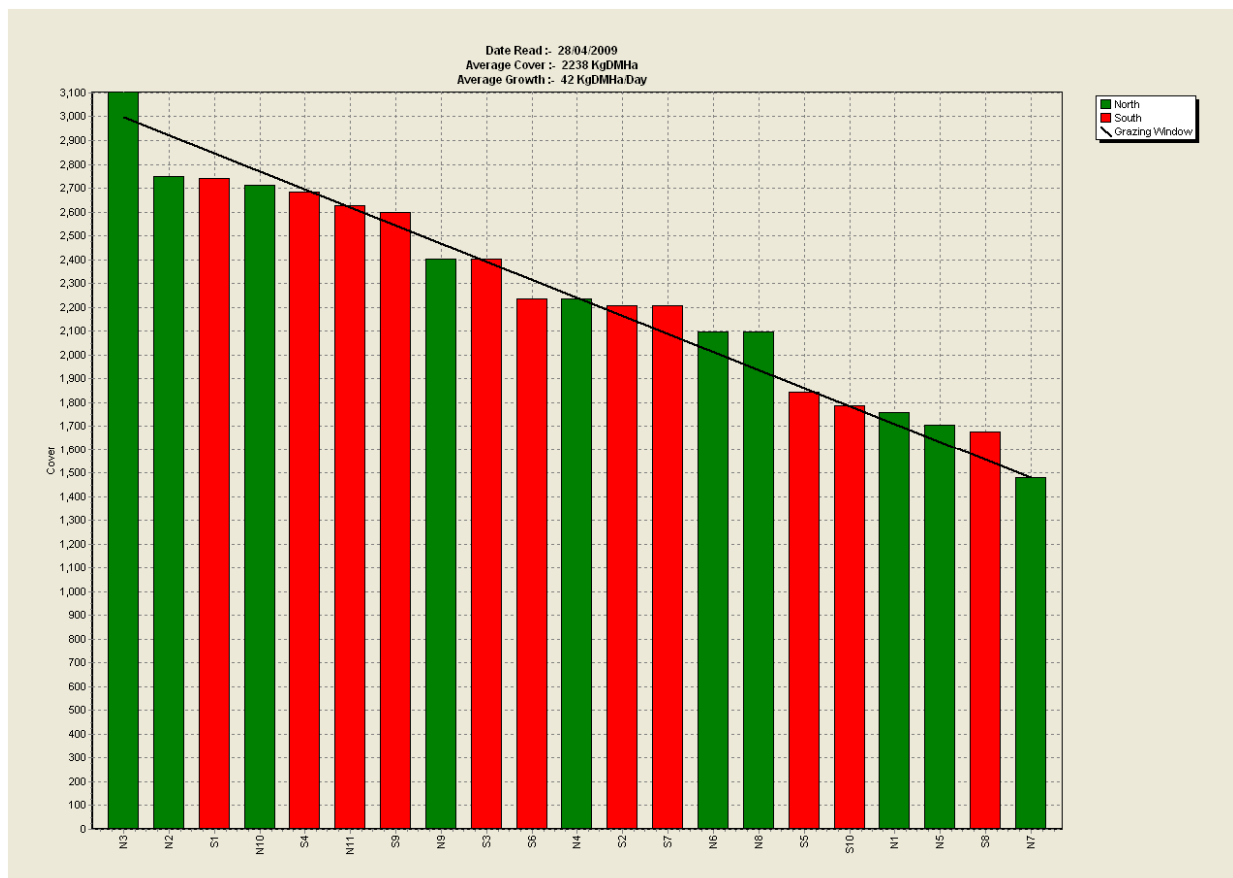
Tuesday 28th April 2009

Critical issues for the short term

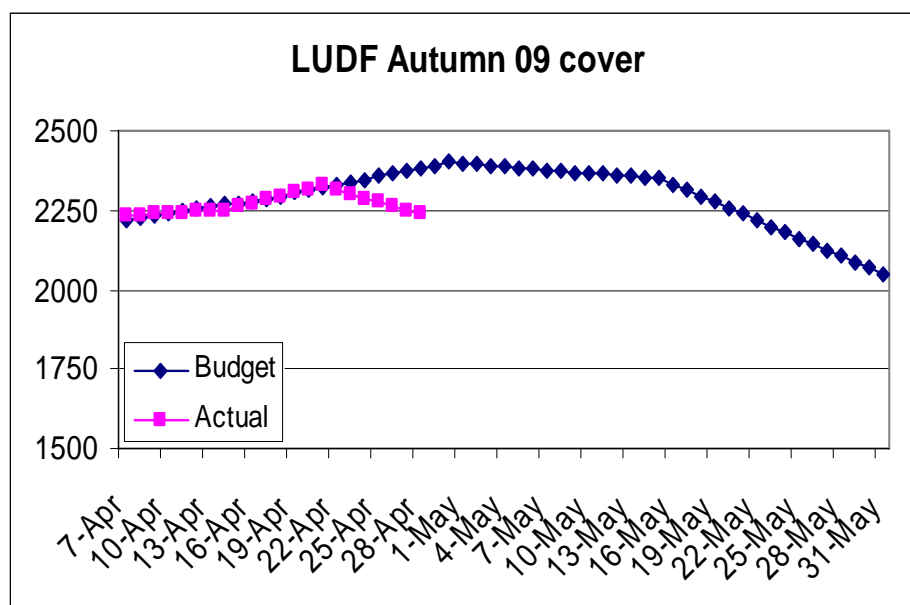
1. Maintain the round length above 35 days
2. Maintain grazing residuals to 7 “clicks”
3. Continue monitoring cow condition to achieve the targets at calving

Summary of Key Factors affecting Grazing Management & Animal Performance

4. Soil Temperatures at 9 am have been below 10°C at the beginning of the week, increasing to 14°C at the end of the week.
5. The weather forecast for next week is for cooler weather with southerlies.
6. PASTURE GROWTH was 42 kg DM/ha, which is a significantly lower than last week at 59 kg DM/ha.
7. Average pasture cover has dropped to 2238 kg DM/ha from 2327 kg DM/ha last week.
8. Last week the overall rotation length was 36 days on 159.1 ha. We achieved this round length by feeding 16.3 tonne DM of silage, 7 tonne DM less than last week. This represents 4.5 kg DM/cow/day (1.5 kg DM less than last week).
9. The Feed Wedge Today



10. The target line in the wedge above reflects the pre-grazing target for a 36 day rotation, offering 13 kg DM of grass/cow at a stocking rate of 3.25 cows/ha
 $(3.2 \times 36 \times 13) + 1480 = 2999$ kg DM/ha. High quality pasture baleage (tested at 11.4 and 11.7MJM/kgDM) will be offered at about 3-4 kg DM/cow/day as needed to maintain cows' intake, round length and residuals in the agreed zones.
11. The key decisions at this time of the year are based around achieving the average pasture cover target at drying off and cow condition target at calving. To achieve this, our round length needs to stay above 35 days. We will be feeding high quality silage at similar levels per cow as last week as needed. Last week 47 not in-calf cows were sold and were off farm by the Wednesday.
12. Average cows milked last week was 516. Cows were put on Once-a-Day [OAD] three weeks ago. The decision to put the herd on OAD milking has been made because we could see that there were too many light conditioned cows needing to be dried-off before the end of the milking season. Our expectation is that the herd will gain weight more quickly on OAD and that many less cows will need to be dried-off in early May.
13. We can see the cows' condition improving which is also reflected in the gains in the walk over weighing data. For the last month cows have put on 18 kg LW on average per cow. Tomorrow we will condition score all the cows and see how the range in condition is and act accordingly. We have seen a noticeable improvement in the general condition of the herd.
14. Twenty of the thinnest early calving cows that were not gaining much weight were dried off three weeks ago and were sent off farm. These were identified by using walk over weighing information.
15. The remainder of the season feed budget has target average pasture cover as shown in the graphic below. The principle being to increase cover by May 1st and then to use the feed to make milk as demand increasingly goes above supply as winter begins. Our target is 2,050 – 2,100 pasture cover at May 31st.



The pasture cover is lower than anticipated in the original target (the blue line on the graph above), but we will still end up with the correct cover at the end of May because last week we have culled cows and dropped stocking rate to make sure we achieve the correct end of May cover.

16. We are continuing a round of Urea application with 30 kg N/ha to capture the potential of the current Autumn period. So far we have applied 237 Kg N/ha.
17. Production/ha is 4.07 kg MS/ha/day, last week 4.37. Per cow production was maintained at 1.26 kg MS/cow/day, same as last week.
18. The Somatic Cell count ranged from 303 to 358. There were 2 cows treated for mastitis this week. We are currently stripping 2 quarters every milking. On top of the 2 cows that we have treated we also have another 6 that we are not milking into the silo. These will more than likely end up needing to be treated.
19. The number of lame cows this week was 2.
20. Discussion with our winter graziers is ongoing but close to conclusion.
21. Eco-n for the Autumn was applied this week on another 4 paddocks. Eight of 21 paddocks so far treated with eco-n.

The next WEEKLY farm walk is on Tuesday, **5th May 2009 at 9.00am.**

Farmers or their managers and staff are always welcome to walk with us. Please call to notify us of your intention and bring your plate meter. Phone SIDDC – 03 325 3629

Management Group

Peter Hancox (Farm Manager), Neil Jones (Herd Manager), Virginia Serra (DairyNZ), George Reveley (for SIDDC).

Lincoln University Dairy Farm - Farm Walk notes

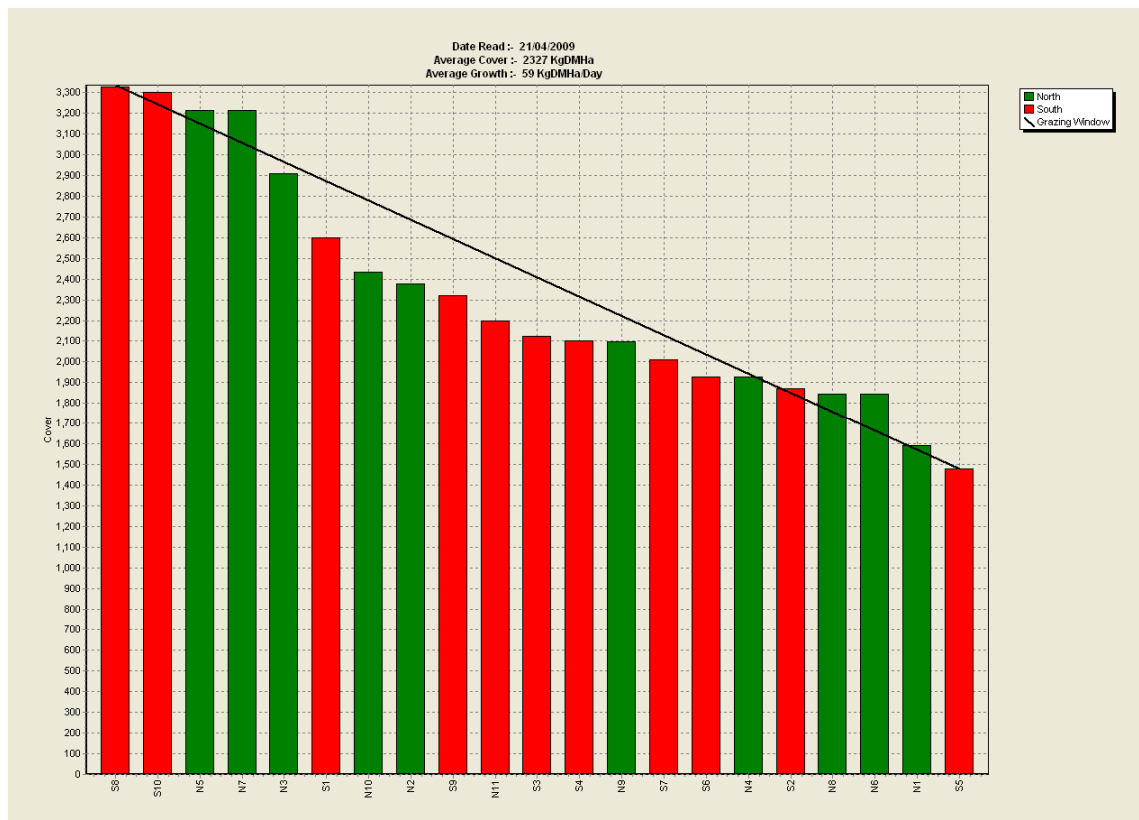
Tuesday 21st April 2009

Critical issues for the short term

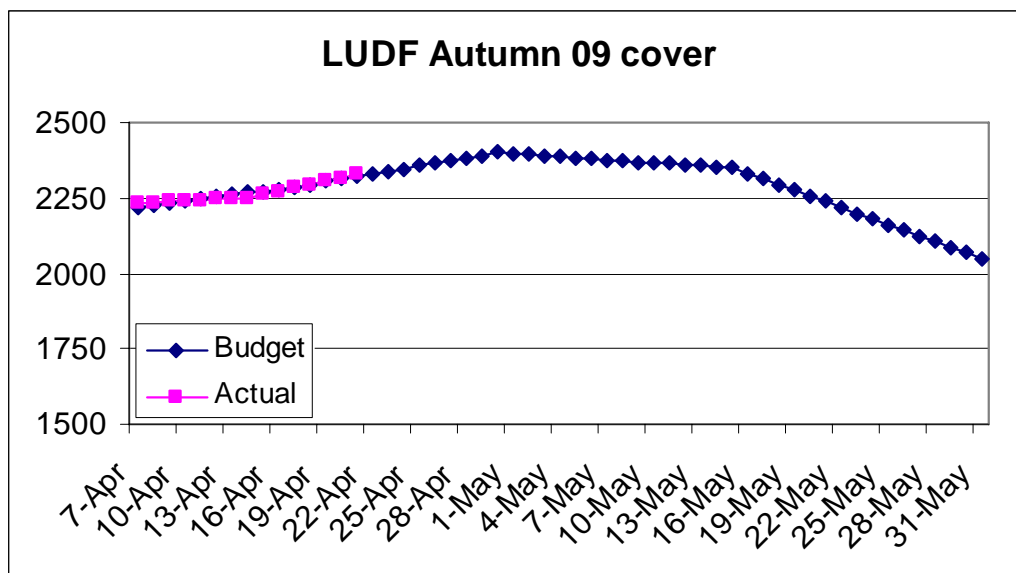
1. **Maintain the round length above 32 days.**
2. **Maintain grazing residuals to 7 “clicks”.**
3. **Continue monitoring cow condition to achieve targets at calving.**

Summary of Key Factors affecting Grazing Management & Animal Performance

4. Soil Temperatures at 9.00 am had been quite stable at 13°C but dropped significantly today – more typical for this time of year than they were a fortnight ago.
5. The weather forecast for next week is for fine but cooler weather.
6. PASTURE GROWTH was 59 kg DM/ha, which is a bit higher than last week at 55 kg DM/ha. We expect pasture growth to remain above 50kgDM/ha again over the next week.
7. Average pasture cover has increased to 2327 kg DM/ha from 2252 kg DM/ha last week.
8. Last week the overall rotation length was 33 days on 159.1 ha. We achieved this round length by feeding 23.4 tonne DM of silage, which represented 5.98 kg DM/cow/day.
9. The Feed Wedge Today



10. The target line in the wedge above reflects the pre-grazing target for a 35 day rotation, offering 15 kg DM/grass/cow at a stocking rate of 3.53 cows/ha ($3.53 \times 35 \times 15$) + 1480 = 3333 kg DM/ha. High quality pasture baleage (tested at 11.4 and 11.7 MJM/kg/DM) will be offered at about 3 - 4 kg DM/cow/day as needed to maintain cows' intake, round length and residuals in the agreed zones.
11. The key decisions at this time of the year are based around achieving the average pasture cover target at drying off, and cow condition target at calving. To achieve this, our round length needs to be pushed to 35 days. Feeding this very high quality silage will be generating a small level of profitability but further reduction in cow numbers is called for and we have decided to dry off all the known remaining not in-calf cows immediately. These will be sold and will leave the farm as soon as they are fully dried off.
12. Average cows milked last week was 562. Cows were put on Once-a-Day (OAD) two weeks ago. The decision to put the herd on OAD milking has been made because we could see that there were too many light conditioned cows needing to be dried off before the end of the milking season. Our expectation is that the herd will gain weight more quickly on OAD and that many less cows will need to be dried off in early May.
13. We can see the cows' condition improving which is also reflected on the gains in the walk over weighing data.
14. Twenty of the thinnest early calving cows that were not gaining much weight were dried off two weeks ago and were sent off farm. These were identified by using walk over weighing information.
15. The remainder of the season feed budget has target average pasture cover as shown in the graphic below. The principle being to increase cover by May 1st and then to use the feed to make milk as demand increasingly goes above supply as winter begins. Our target is 2,050 – 2100 pasture cover at May 31st.



16. We are continuing a round of Urea application with 40 kg N/ha to capture the potential of the current autumn period.
17. Production/ha is 4.37 kg MS/ha/day, last week 4.47. Per cow production was 1.26 kg MS/cow/day, similar to the previous week which was 1.27 kg MS/cow/day.

18. The Somatic Cell count ranged from 425 to 290. There were 9 cows with fresh clinical mastitis treated this week. After putting cows on OAD SCC increased to 300 and then to 425. Cows were stripped on day 5 after being put on OAD and 8 cows were identified and treated. After these cows were taken out the SCC dropped to 290. It appears that the infection kicked in three days after the herd was put on OAD and being stressed. With hindsight, we should have stripped the herd on day three of cows being on OAD.
19. The number of lame cows this week was 2.
20. Discussion with our winter graziers is ongoing but close to conclusion.
21. The eco-n for the autumn has started and has been applied over 4 paddocks, another 4 paddocks will have eco-n applied this week.

The next WEEKLY farm walk is on Tuesday **28th April 2009 at 9.00am.**

Farmers or their managers and staff are always welcome to walk with us. Please call to notify us of your intention and bring your plate meter. Phone SIDDC – 03 325 3629

Management Group

Peter Hancox (Farm Manager), Neil Jones (Herd Manager), Virginia Serra (DairyNZ), George Reveley (for SIDDC).

Lincoln University Dairy Farm - Farm Walk notes

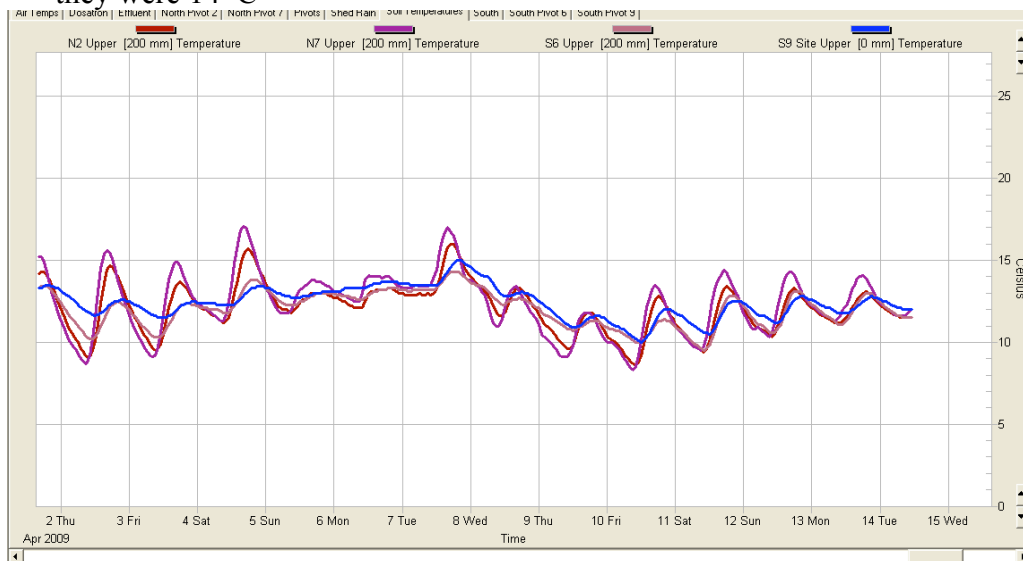
Tuesday 14 April 2009

Critical issues for the short term

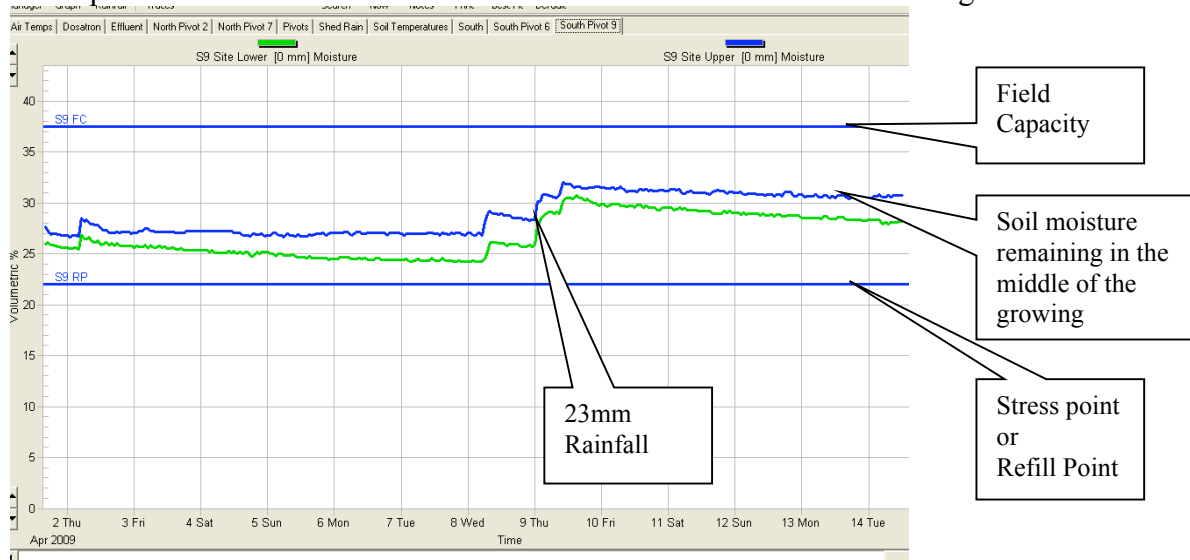
1. **Maintain the round length above 32 days**
2. **Maintain grazing residuals to 7 “clicks”**
3. **Continue monitoring cow condition to achieve the targets at calving**

Summary of Key Factors affecting Grazing Management & Animal Performance

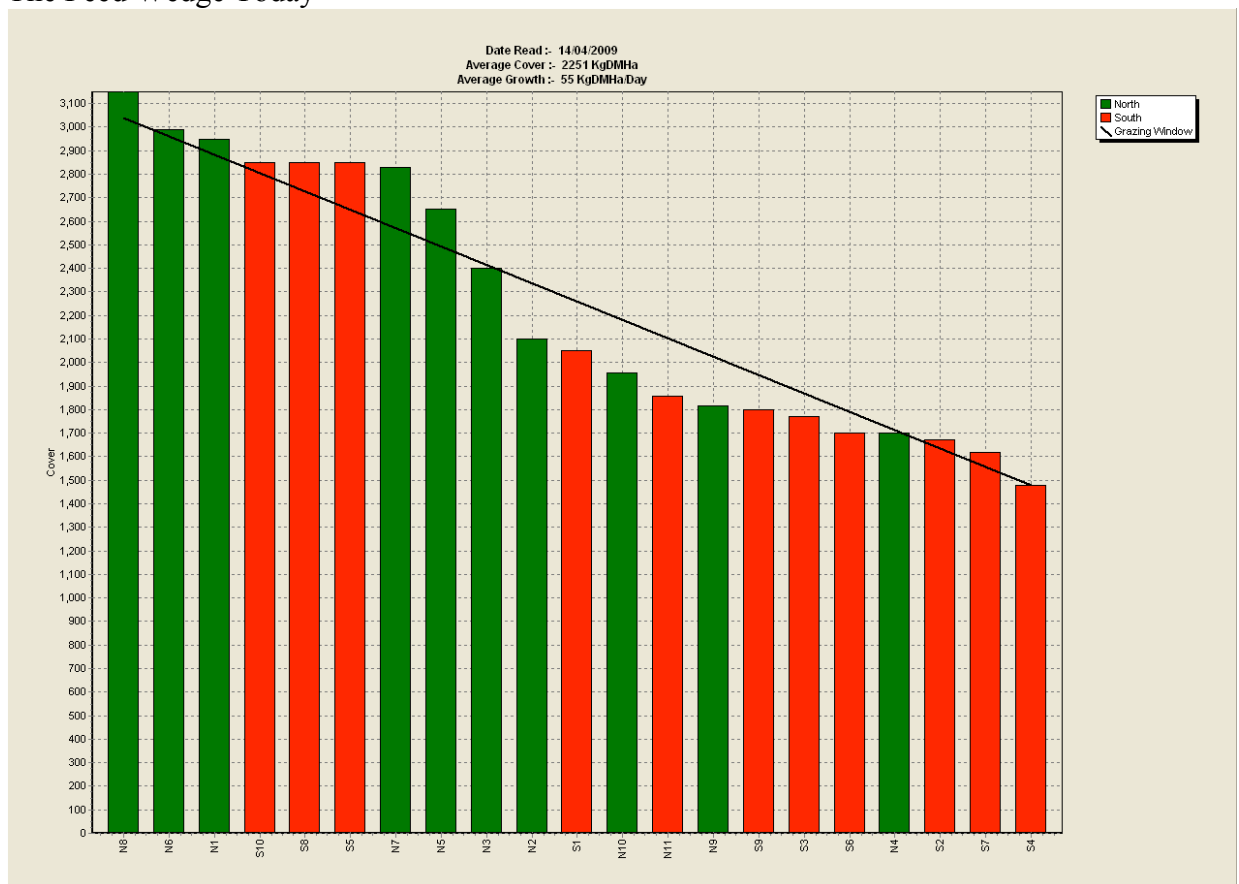
4. Soil Temperatures at 9 am have been around 9°C for 3 days during the week and are rising again at the end of the week to just above 11°C whereas at this time last season they were 14°C



5. The weather forecast for next week is for milder weather than what we had last week.
6. SOIL MOISTURE has risen with the addition of 23 mm from rainfall. Our strategy is to have the soil as dry as possible but avoiding moisture stress. The graphic from Aquaflex below shows that so far we have been successful in achieving this.

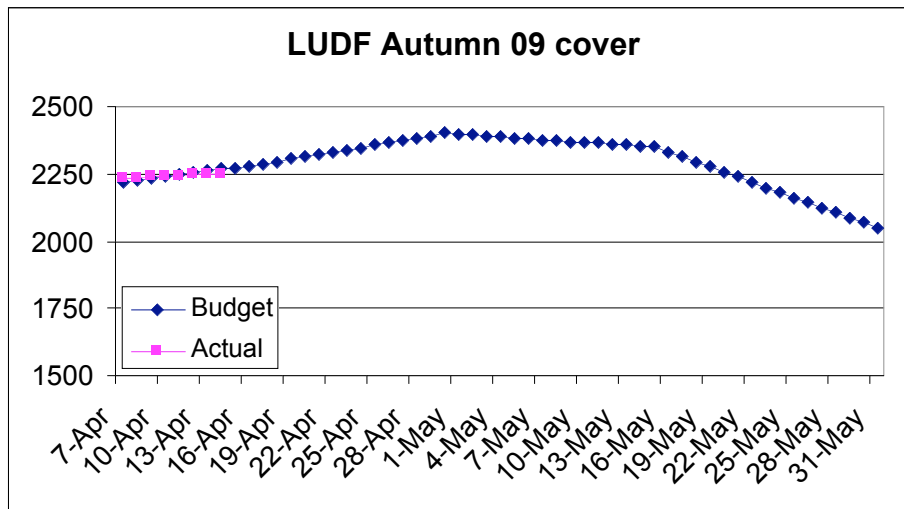


7. PASTURE GROWTH was similar to last week at 55 kg DM/ha (previous week 54 kg DM/ha).
8. Average pasture cover has increased to 2251 kg DM/ha from 2232 kg DM/ha last week.
9. Last week the overall rotation length was 32 days on 159.1 ha. We achieved this round length by feeding 22.5 Tonne DM of silage, which represented 5 kg DM/ cow/day.
10. Average cows milked last week was 560 and will be the same this week. Cows were put on Once a Day last week. The decision to put the herd on once a day (OAD) milking has been made because we could see that there were too many light conditioned cows needing to be dried off significantly before the end of the milking season. Our expectation is that the herd will gain weight more quickly on OAD and that many less cows will need to be dried off in early May.
11. Twenty of the thinnest early calving cows that were not gaining much weight were dried off last week and will be sent away to pasture off farm in the next couple of days. These were identified by using walk over weighing information.
12. The Feed Wedge Today



13. The target line in the wedge above reflects the pre-grazing target for a 34 day rotation, offering 13 kg DM of grass/cow at a stocking rate of 3.52 cows/ha ($3.52 \times 34 \times 13 + 1480 = 3036$ kg DM/ha). High quality pasture baleage (tested at 11.4 and 11.7me) will be offered at about 3-4 kg DM/cow/day as needed to maintain cows' intake, round length and residuals in the agreed zones.

14. The key decisions at this time of the year are based around achieving the average pasture cover target at drying off and cow condition target at calving. To achieve this, our round length needs to be held above 32 days and pushed a little further if possible. We are happy to feed silage to achieve this at up to 4 kg DM/cow/day.
15. Cows have maintained weight this week.
16. The remainder of the season feed budget has target average pasture cover as shown in the graphic below. The principle being to increase cover by May 1st and then to use the feed to make milk as demand increasingly goes above supply as winter begins. Our target is 2,050 – 2100 pasture cover at May 31st.



17. We are continuing a round of Urea application with 40 kgN/ha to capture the potential of the current autumn period.
18. Production /ha is 4.47 kg MS/ha/day last week 5.21. Per cow production decreased to 1.27 kg MS/cow/day from 1.43 kg MS/cow/day last week.
19. The Somatic Cell count ranged from 223-300. There was one cow with fresh clinical mastitis treated this week.
20. The number of lame cows was 2 this week.
21. Discussion with our winter graziers is ongoing but close to conclusion.
22. The eco-n for the autumn has been ordered and will begin to be applied starting this week.

The next WEEKLY farm walk is on Tuesday **21st April 2009 at 9.00am.**

Farmers or their managers and staff are always welcome to walk with us. Please call to notify us of your intention and bring your plate meter. Phone SIDDC – 03 325 3629 Management Group

Peter Hancox (Farm Manager), Neil Jones (Herd Manager), Virginia Serra (DairyNZ), George Reveley (for SIDDC).

Lincoln University Dairy Farm - Farm Walk notes

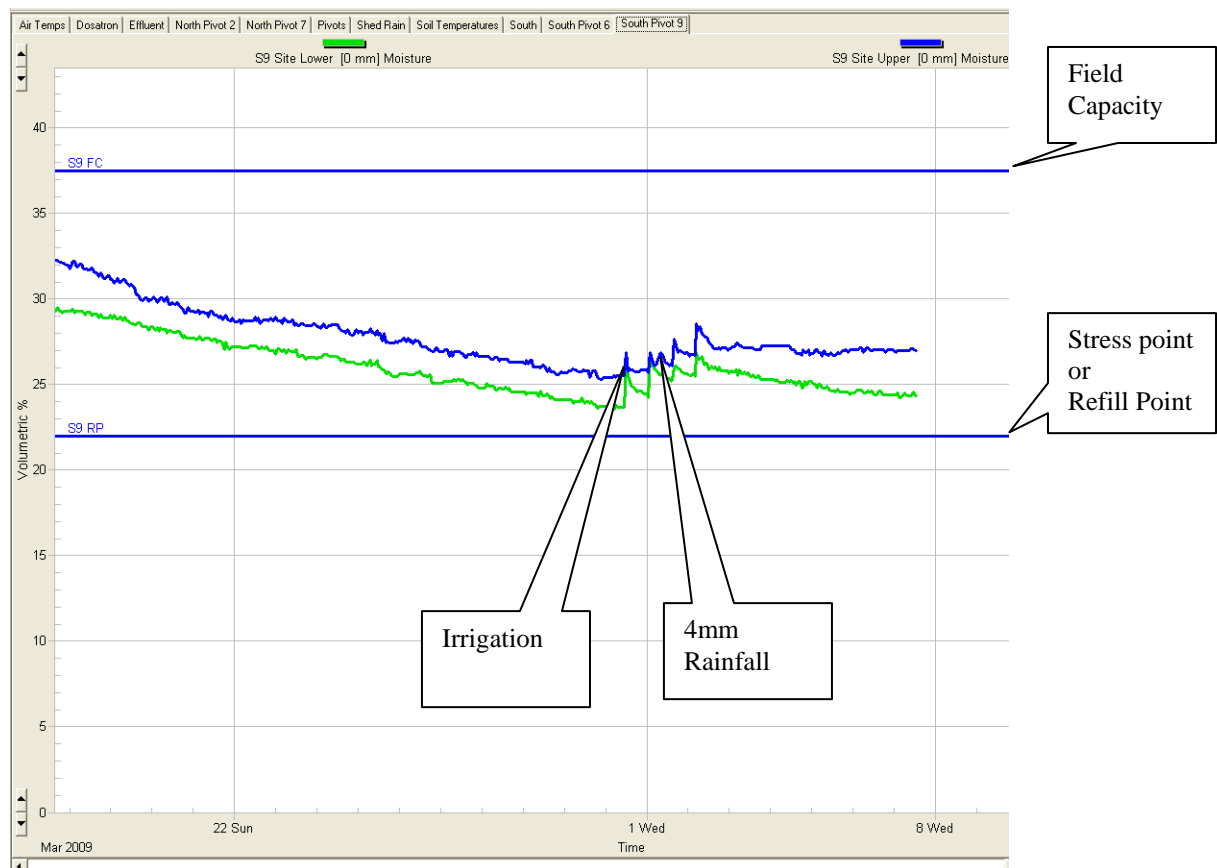
Tuesday, 7th April 2009

Critical issues for the short term

1. **Maintain the 30 days round length**
2. **Maintain grazing residuals to 7 “clicks”**
3. **Continue monitoring cow condition to achieve the targets at calving**

Summary of Key Factors affecting Grazing Management & Animal Performance

4. Soil Temperatures at 9.00 am have been lower over the last week averaging 11°C. At this time last season temperatures were 16°C down to 14°C in the following week.
5. The weather forecast for next week has, at least, 3 very cold days in it.
6. SOIL MOISTURE has been managed with three days irrigation, lifting the levels and holding them in the lower end of the target range. Our strategy is to have the soil as dry as possible while avoiding moisture stress.

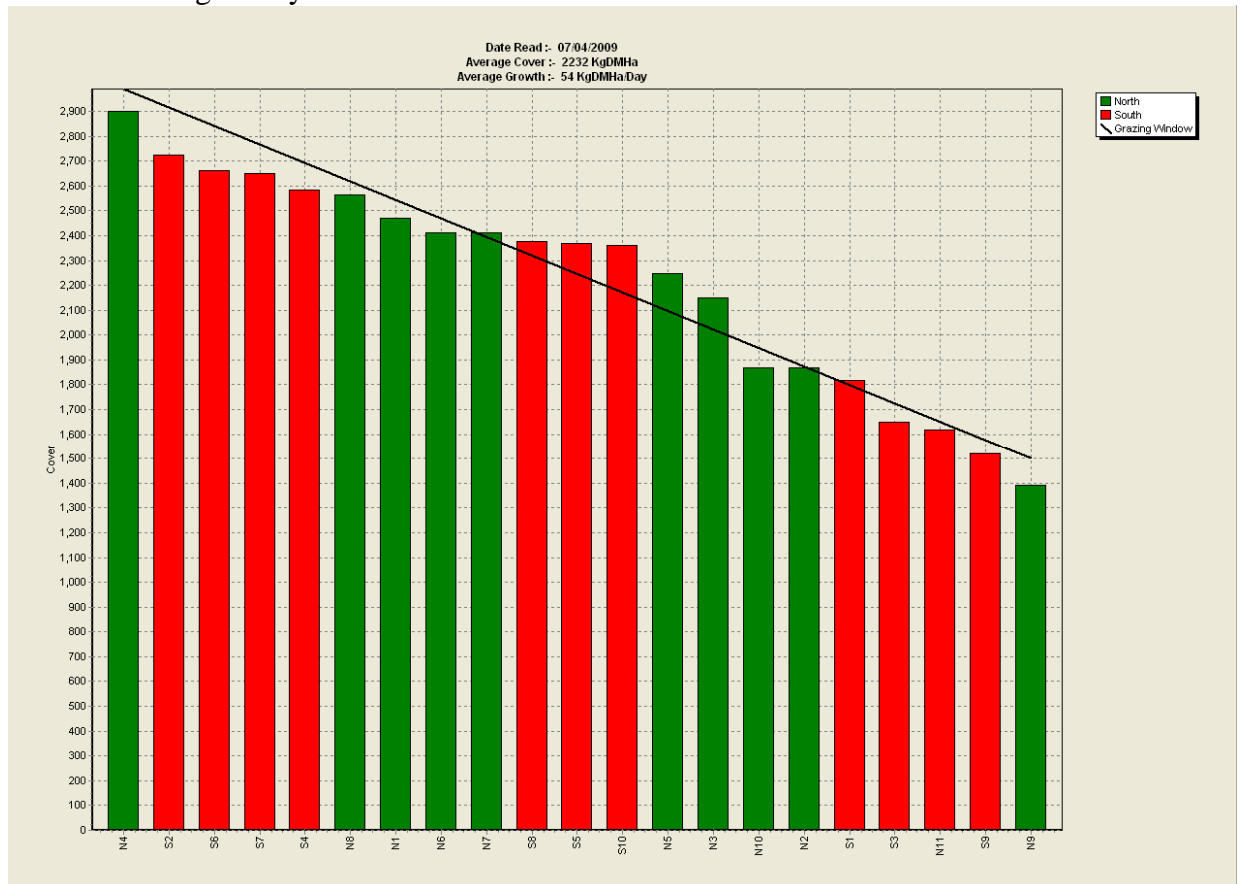


7. PASTURE GROWTH was 54 kg DM/ha (previous week 64 kg DM/ha).
8. Average pasture cover has increased to 2232 kg DM/ha, from 2200 kg DM/ha last week.
9. Last week the overall rotation length was 31.5 days on 159.1 ha. We achieved this round length by feeding 15.7 Tonne DM of silage which represented 4.52 kg DM/cow/day.

10. Average for cows milked last week was 581.

11. Next week we will milk 560 cows Once-a-Day [OAD] which will drop feed demand by about 15%. The decision to milk once a day is discussed below.

12. The Feed Wedge today



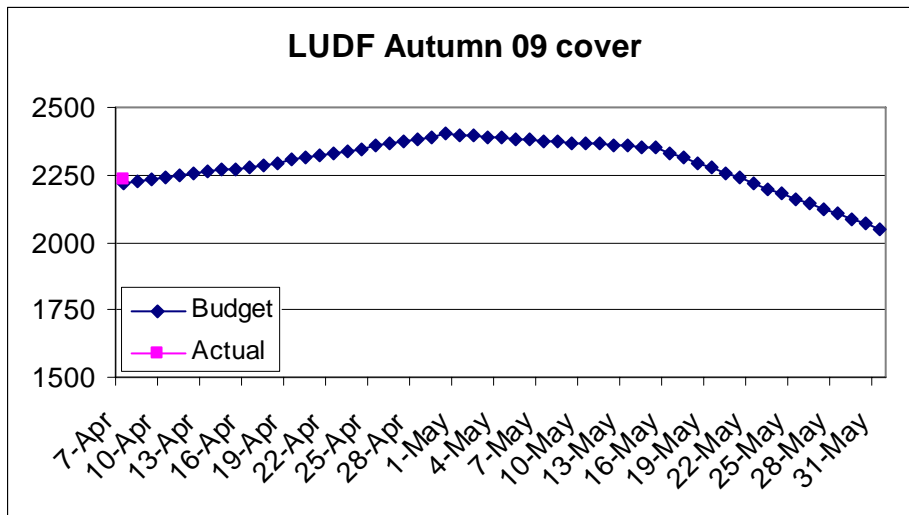
13. The target line in the wedge above reflects the pre-grazing target for a 30 day rotation, feeding an average of 3.6 kg/cow/day silage plus 10.4 kg DM/cow. Total of 14kg DM/cow/day at a stocking rate of 3.52 cows/ha. $(3.52 \times 30 \times 14) + 1480 = 2958$ kg DM/ha. There is a gap between the line and the feed available in the short term which will be filled with high quality pasture baleage. Samples taken tested 11.4 and 11.7 ME.

14. The decision to put the herd on OAD milking has been made because we could see that there were too many cows needing to be dried off before the end of the milking season. Our expectation is that the herd will gain weight more quickly on OAD and that many less cows will need to be dried off in early May.

15. Twenty of the thinnest early calving cows that are not gaining weight will be dried off during this week and sent away to pasture off farm. These have been identified by using walk over weighing information.

16. Overall the herd has gained 8kg live weight during the last month.

17. The remainder of the season feed budget has target average pasture cover as shown in the graphic below. The principle being to increase cover by May 1st and then to use the feed to make milk as demand increasingly goes above supply as winter begins. Our target is 2,050 – 2100 pasture cover at May 31st.



18. We are continuing a round of Urea application with 40 kgN/ha to capture the potential of the current autumn period. In previous years the next 2-3 weeks have seen very strong pasture growth.
19. Production/ha is 5.21 kg MS/ha/day - last week 5.47. Per cow production decreased to 1.43 kg MS/cow/day - last week to 1.46 kg MS/cow/day.
20. The Somatic Cell count ranged from 176-187. There was one cow with fresh clinical mastitis treated this week.
21. The number of lame cows was 4 this week. Three of these cows have been dried off as they were losing weight. We will keep these cows nearby to ensure they regain full mobility.
22. Discussions with our winter graziers is ongoing but close to conclusion.
23. The eco-n for the autumn has been ordered and will begin to be applied from Mid April.

The next WEEKLY farm walk is on Tuesday **14th April 2009 at 9.00am.**

Farmers or their managers and staff are always welcome to walk with us. Please call to notify us of your intention and bring your plate meter. Phone SIDDC – 03 325 3629

Management Group

Peter Hancox (Farm Manager), Neil Jones (Herd Manager), Virginia Serra (DairyNZ), George Reveley (for SIDDC).