

Lincoln University Dairy Farm - Farm Walk notes

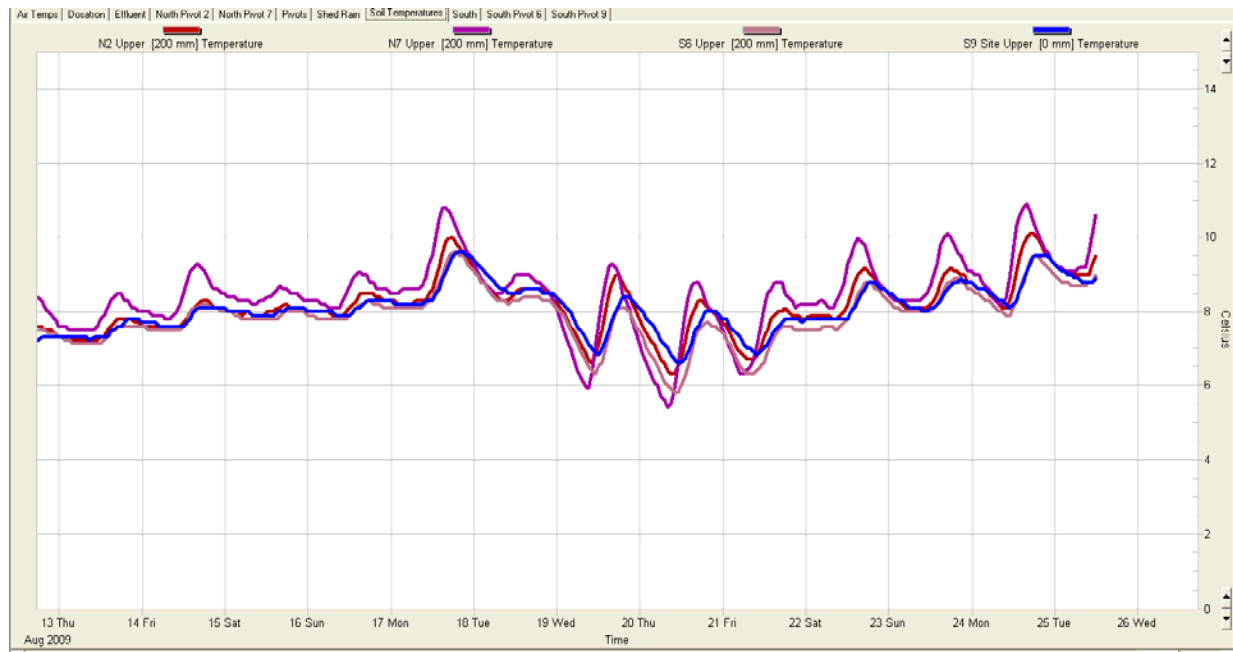
Tuesday, 25th August 2009

Critical issues for the short term

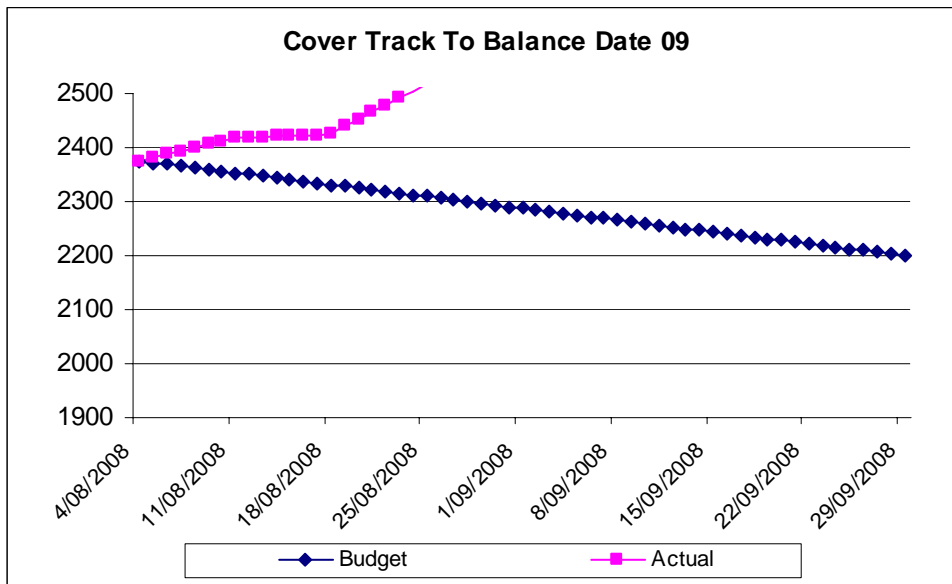
1. **Back fence all mobs**
2. **Continue Mg supplementation (dust paddocks and water trough treatments)**
3. **Closely observe milking cows for mastitis**
4. **Do not exceed the area grazed per week established in the Spring Plan**
5. **Keep cows to the desired residual of 7 clicks**
6. **Maintain very strict hygiene in the calf sheds**

Summary of Key Factors affecting Grazing Management & Animal Performance

7. Soil Temperatures at 9.00 am have been between 7-8°C most days of the week.

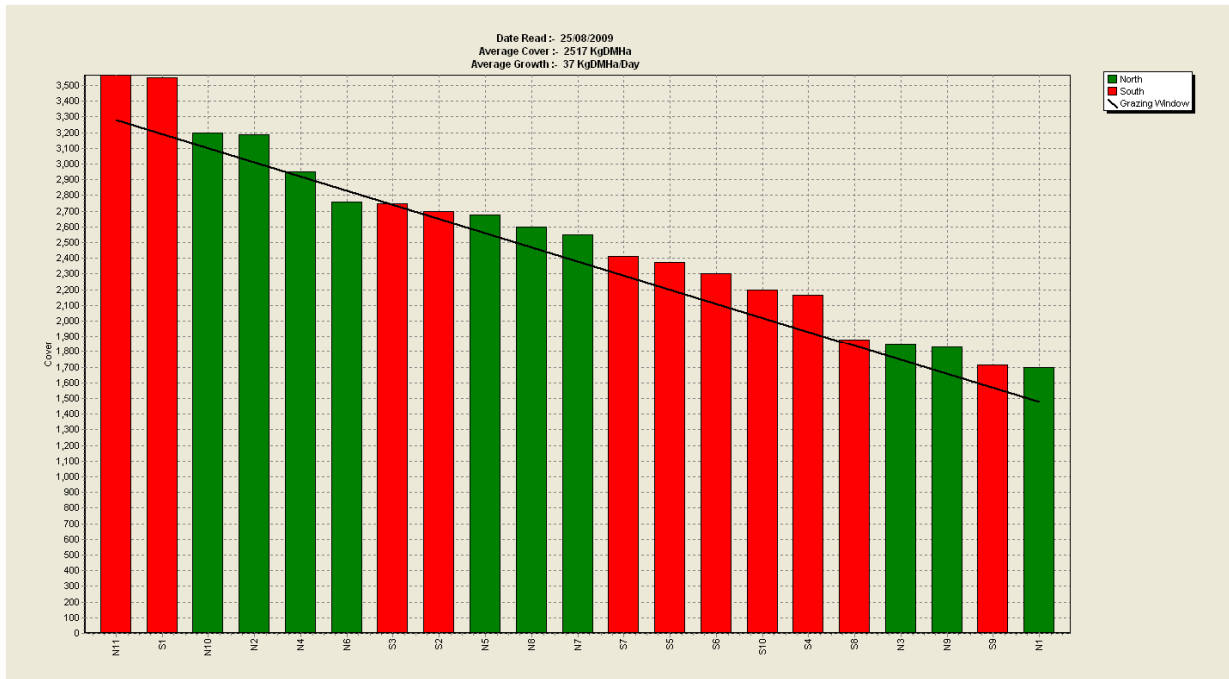


8. We had 11 mm of rain last Tuesday. Most paddocks have dried out quite well, except for a small part of the South Block.
9. PASTURE GROWTH increased to 35 kg DM/ha, from 19 kg DM/ha last week.
10. Average PASTURE COVER increased to 2517 kg DM/ha, from 2,426 kg DM/ha.
11. The average pasture cover target graph below shows the gain in pasture cover for this week. We are now above the original targeted cover of 2450 kg DM/ha at calving.



12. We are comfortable with available pasture and, if weather conditions continue, may not need to feed any silage, saving both time and money.

13. The Feed Wedge Today



The target line in the wedge reflects the pre-grazing target of 3,280 kg DM/ha and a post grazing of 1480 kg DM/ha, giving us the targeted average pasture cover of 2,380 kg DM/ha.

14. Two paddocks of very good quality Bealey have higher than desired cover and are ready to be grazed.

15. The key priority is to protect the average cover on the farm and this will be achieved by not grazing more area than allocated in the Spring Rotation Plan.

Week Ending	Area budgeted per week	Running total Budget	Actual Area used per week	Running total Actual
4 th August	5.2	5.2	4.7	4.7
11 th August	11.2	16.4	6.73	11.43
18 th August	16.5	32.9	11.6	23.03
25 th August	23.5	56.4	16.1	39.13
1 st September	29.4	85.8		
8 th September	34.6	120.4		
15 th September	38.8	159.2		
TOTAL	159 ha			

16. 16.1 ha were grazed this week, 10.8 ha by the milkers, 3.7 ha by colostrum cows, 0.6 ha by springers, and 1 ha by the sick mob. We used less than budgeted by keeping the cows off the platform for longer than originally planned. The feed represented by the 17 ha difference between the budgeted running total and the current total is about 34t DM; feed that will be pushed ahead for September. To date, no silage has been used on the milking platform, and none is anticipated in the near future.
17. Cows will be offered enough grass to achieve their potential intake and they will be moved on when they reach residual.
18. Recent good ground conditions enabled us to achieve our target residual (7clicks). Back fencing is a crucial part of our system to ensure we protect new growth.
19. 436 cows have calved so far (93 this week).
20. We have all the heifer replacements required (160 heifers), and all surplus heifers will be sold at 4 days.
21. All cows calved more than four days are rapid mastitis tested before their milk is put in the silo for collection. Samples tested last week identified the infection as Streptococcus Uberis (environmental Mastitis). Most cows are responding well to treatment. There has been 20 new cases of Mastitis in fresh calved cows this week, 21% of the cows calved.
22. We have 339 cows milking into the silo. Cows are producing 1.53 kg MS/cow/day and 2.9 kg MS/ha/day.
23. Our aim is to milk every cow once-a-day for the first 3 weeks after calving to reduce body weight loss and also to make things easier on farm for staff. We are milking 155 cows twice-a-day and most of these are heifers.
24. SSC has been between 104,000 and 114,000 for most of the week, with one day at 198,000.
25. A group of 80 calves are already outside and 40 more will go out tomorrow. Calves have been fed milk OAD and they also get meal and straw. They are growing well and looking healthy, as they have done on this system in previous years.
26. We have enough grazing for most of the cows to calve on grass close to the milking platform. Cows grazed off farm in Hororata came back last Thursday.
27. Eco-n application started last week on Paddock N9. Two more paddocks will be sprayed tomorrow.
28. DAP13S with additional Ammonium Sulphate was applied to 57.06 ha of the farm, a further 35.8 ha will receive an application tomorrow.

Next farm walk will be on Tuesday, 1st September 2009.

Farmers or their managers and staff are always welcome to walk with us. Please call to notify us of your intention and bring your plate meter. Phone SIDDC – 03 325 3629

Management Group

Peter Hancox (Farm Manager), Virginia Serra (DairyNZ), George Reveley (for SIDDC).

Lincoln University Dairy Farm - Farm Walk notes

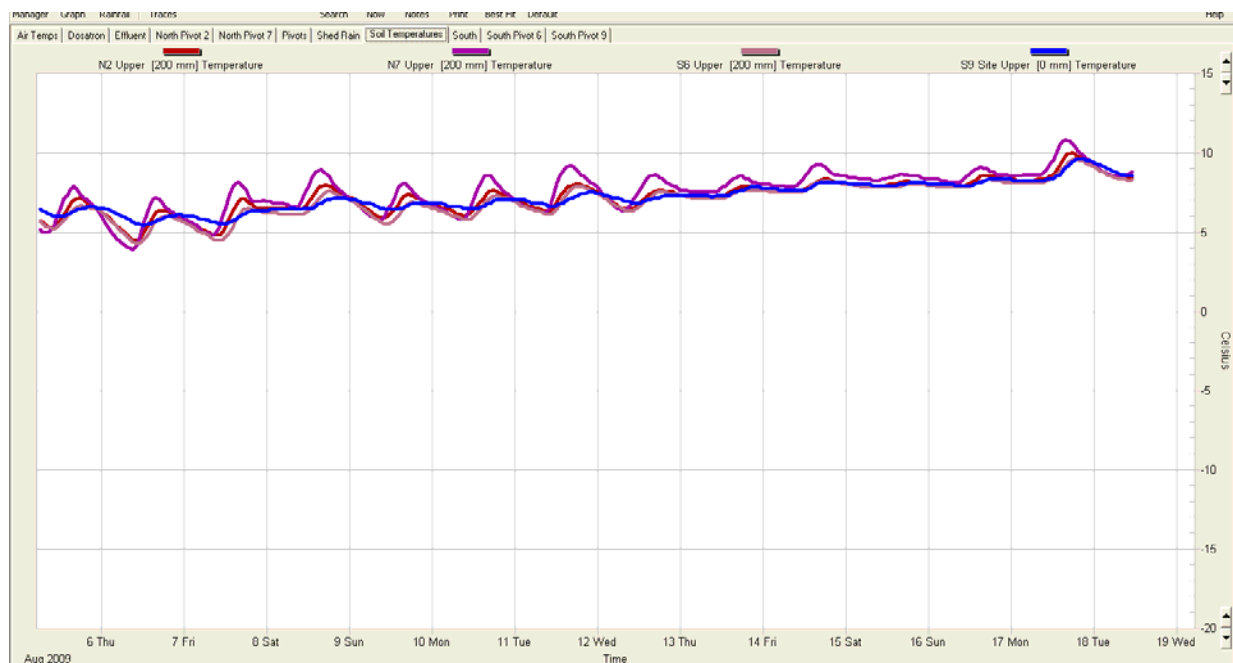
Tuesday, 18th August 2009

Critical issues for the short term

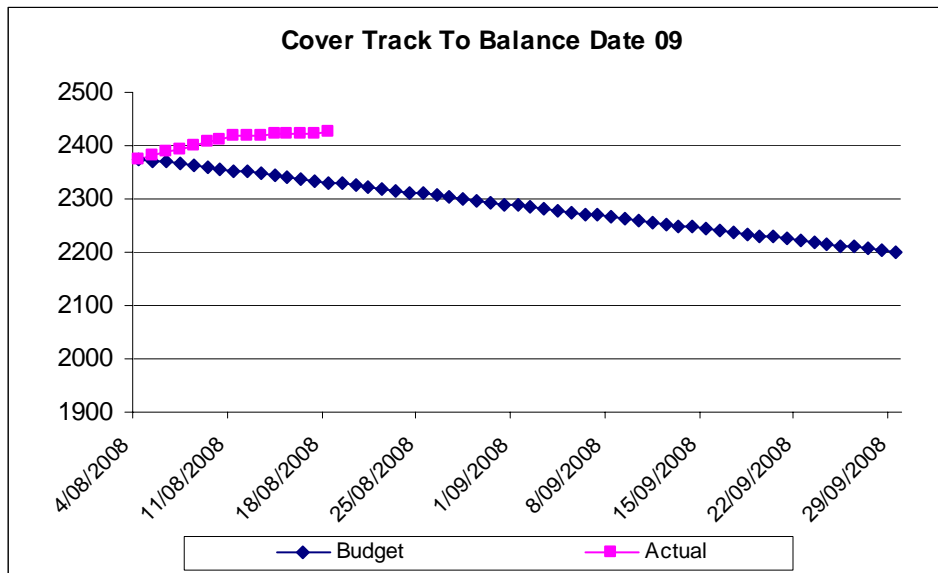
1. **Back fence all mobs**
2. **Continue Mg supplementation (dust paddocks and water trough treatments)**
3. **Closely observe milking cows for mastitis**
4. **Do not exceed the area grazed per week, as established by the Spring Plan**
5. **Keep cows to the desired residual of 7 clicks**
6. **Maintain very strict hygiene in the calf sheds**

Summary of Key Factors affecting Grazing Management & Animal Performance

7. Soil Temperatures at 9.00 am have been around 8-9°C, and rose close to 10°C yesterday. The days have been a bit colder than last week but we have not had any frost.

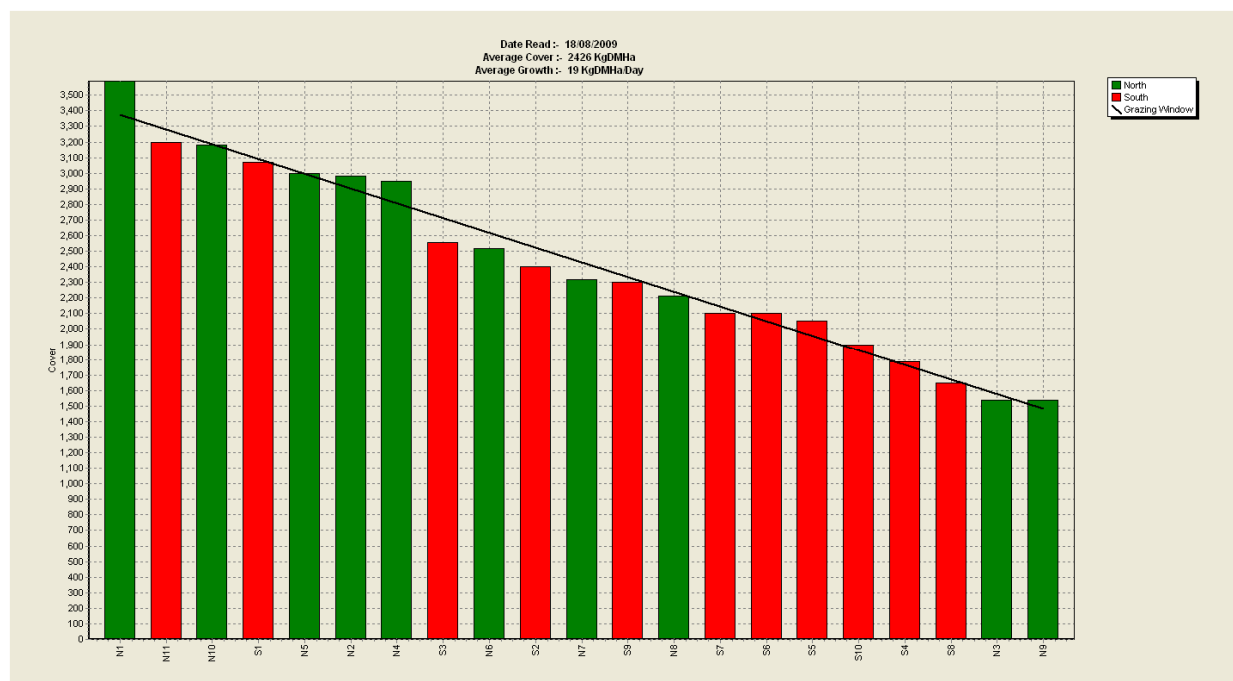


8. We had 17 mm of rain last Thursday, a total of 25 mm for the week. The farm is looking wet, especially the South Block. There is some mud on paddocks where cows are walking to the breaks but there is no serious damage.
9. PASTURE GROWTH was 19 kg DM/ha, a little higher than last week at 16 kg DM/ha.
10. Average PASTURE COVER increased to 2,426 kg DM/ha from 2,418 kg DM/ha.
11. The average pasture cover graph below shows the gain in pasture cover for this week. We are now on target with our original targeted cover. We identified our deficit situation early and decided early that we would replace it with extra winter grazing. We made the most of opportunities as they arose.



12. We are comfortable with the pasture cover we currently have on farm but remain cautious with demand increasing as the cows calve, and with uncertainty around what Spring may bring.

13. The Feed Wedge Today



The target line in the wedge reflects the pre-grazing target of 3,372 kg DM/ha and a post grazing of 1480 kg DM/ha, which gives us the targeted average pasture cover of 2,426 kg DM/ha i.e. the actual cover on the farm.

14. The key priority for us is to protect the average cover on farm, and we will do this by adhering to the Spring Rotation Plan.

Week Starting	Area budgeted per week	Running total Budget	Actual Area used per week	Running total Actual
4 th August	5.2	5.2	4.7	4.7
11 th August	11.2	16.4	6.73	11.43
18 th August	16.5	32.9	11.6	23.03
25 th August	23.5	56.4		
1 st September	29.4	85.8		
8 th September	34.6	120.4		
15 th September	38.8	159.2		
TOTAL	159 ha			

15. 11.6 ha were grazed this week, 9 ha by the milkers, 1.8 ha by colostrum cows, and 0.8 ha by springers. The running total is 10ha less than budgeted because we managed to keep cows off the platform for longer than anticipated and represents an estimated 20 t DM; feed that will be pushed ahead for September. To date we have not used any silage on the milking platform.
16. Recent good ground conditions enabled us to achieve our targeted residual (7clicks). Back fencing is a crucial part of our system to ensure we protect new growth.
17. We have 343 cows calved so far (113 this week).
18. We have 129 heifers of the 160 heifers we need as replacements.
19. All cows calved more than four days are rapid mastitis tested before their milk is put in the silo for collection. Samples have been sent to the lab to identify species and target the right treatment. We had 12 new cases of Mastitis in fresh calved cows, being 10.6 % of the cows calved this week. The higher incidence of Mastitis this week is likely to be the consequence of the wetter weather and soil conditions.
20. We have 241 cows milking into the silo. Cows are producing 1.2 kg MS/cow/day and 1.5 kg MS/ha/day.
21. Our aim is to milk all cows once-a-day for the first 3 weeks to reduce body weight loss after calving and also to make things easier for staff on farm. We will start milking the first herd twice-a-day this Thursday, expected to be about 100 heifers.
22. SSC was 120,000 this week.
23. A group of 40 calves went outside last week and another 40 will go out tomorrow. Calves are fed milk OAD and they also get meal and straw. They are growing well and looking healthy, as they have done on this system in previous years.
24. We think we have enough grazing for the cows wintered at Hororata to calve on grass close to the milking platform. They will be returning in the next few days.
25. Eco-n application will start over the next week as paddocks are grazed out.
26. Our farm policy is to apply N at 40kg/ha to the whole farm when soil temperatures are 5°C and rising. This year is no exception. Paddocks with less than 2400 kgDM/ha have received DAP13S with additional Ammonium Sulphate, while the remainder of the farm will be done following grazing.

Next farm walk will be on Tuesday 25th August.

Farmers or their managers and staff are always welcome to walk with us. Please call to notify us of your intention and bring your plate meter. Phone SIDDC – 03 325 3629 Management Group

Peter Hancox (Farm Manager), Virginia Serra (DairyNZ), George Reveley (for SIDDC).

Lincoln University Dairy Farm - Farm Walk notes

Tuesday, 11th August 2009

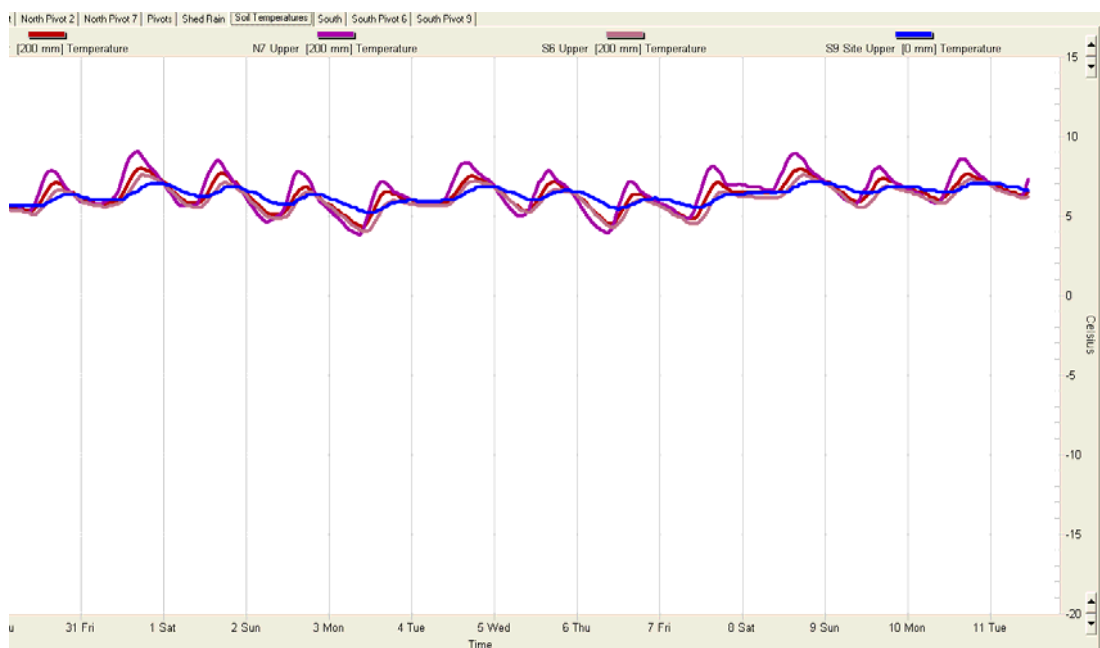
Critical issues for the short term

1. **Back fence all mobs always**
2. **Continue Mg supplementation (dust paddocks and water troughs treatments)**
3. **Closely observe milking cows for mastitis**
4. **Stick to the round length established by the spring plan**
5. **Keep cows to the desired residual of 7 clicks**
6. **Maintain very strict hygiene in the calf sheds**

Summary of Key Factors affecting Grazing Management & Animal Performance

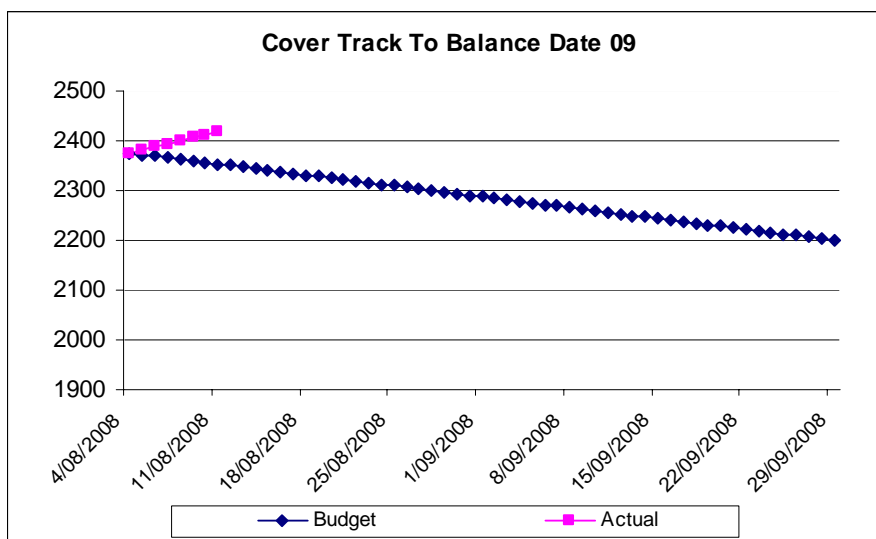
7. Soil Temperatures at 9.00 am have been very slightly higher than last week with the average rising very slowly to just above 6°C. The days have been warm with air temperatures up to 15°C. There were 3 mild frosts but no rain during the week for two weeks in a row.

8.



9. PASTURE GROWTH was 16 kg DM/ha a little lower than last week - 21kg DM/ha.
10. Average PASTURE COVER increased to 2,418 kg DM/ha from 2,375 kg DM/ha. Although growth rates were lower than last week we were able to build cover by 43kgDM/ha because the springers continue to graze on the East Block.

11. The average pasture cover target graphic below shows the gain in pasture cover for this week. An encouraging beginning to August.



12. This average pasture cover can sustain the stocking rate of 4.2 cows /ha, in 20 day rounds and 17 kg DM grass /cow allocated per day. i.e.

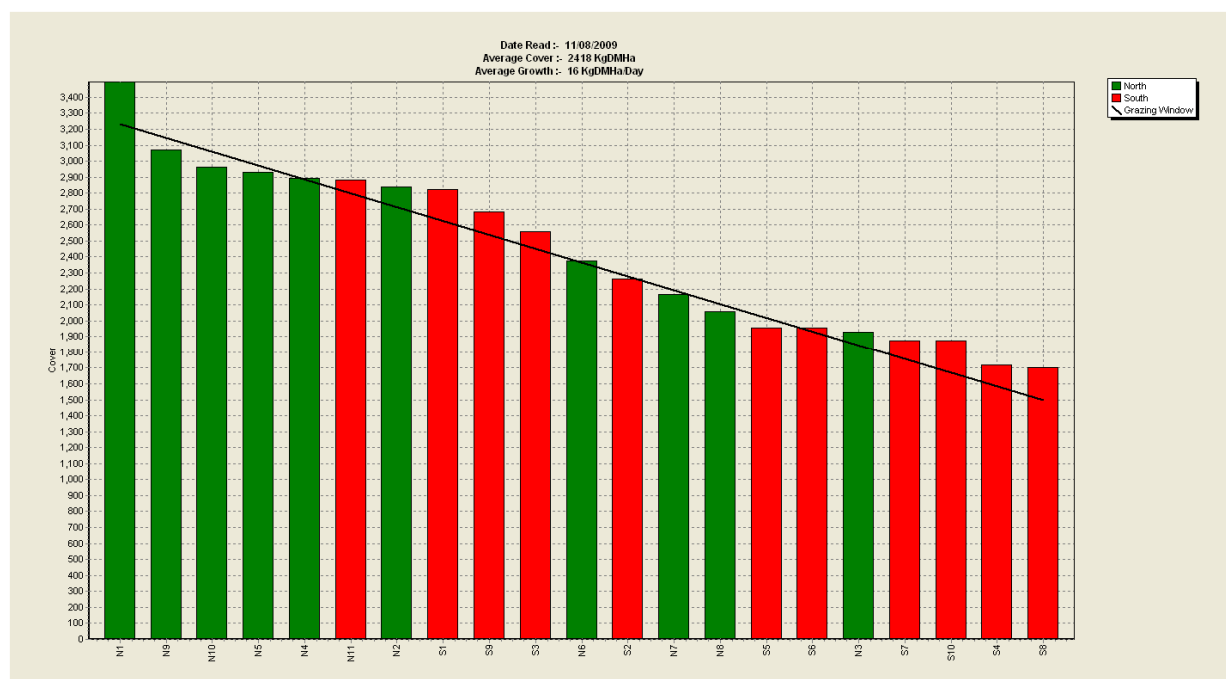
$$\text{Average pasture cover} = \frac{\text{Pre-grazing Cover} + \text{Residual}}{2} = \frac{2908 + 1480}{2} = 2198 \text{ kgDM/ha}$$

$$\text{Pre-grazing cover} = \text{Intake} + \text{Residual} = 1428 + 1480 = 2908 \text{ kgDM/ha}$$

$$\text{Intake} = \text{Stocking rate} \times \text{Round Length} \times \text{Intake} = 4.2 \times 20 \times 17 = 1428 \text{ kgDM/ha}$$

This level of average pasture cover is adequate but if a week of cool weather occurs at that time silage would be required.

13. The Feed Wedge Today



The target line in the wedge reflects the pre-grazing target of 3,226 kg DM/ha and a post grazing of 1480 kg DM/ha which gives us the target average pasture cover of 2,353 kg DM/ha. The paddocks that are half grazed are affecting the bottom of the wedge.

- The key priority for us is to protect the average cover on the farm and we will do it by following the Spring Rotation Plan.

Week Starting	Area budgeted per week	Running total Budget	Actual Area used per week	Running total Actual
4 th August	5.2	5.2	4.7	4.7
11 th August	11.2	16.4	6.73	11.43
18 th August	16.5	32.9		
25 th August	23.5	56.4		
1 st September	29.4	85.8		
8 th September	34.6	120.4		
15 th September	38.8	159.2		
TOTAL	159 ha			

- From the area grazed this week of 6.73 ha, 5.13 ha was used by the milkers, 1 ha by colostrum cows and 0.6 ha by springers. We have been able to use less than budgeted because we have managed to keep cows away for longer than we anticipated.
- Because of very good ground conditions we have been able to achieve our target residual (7clicks). Back fencing is a crucial part of our system to ensure we protect new growth.
- We have 230 cows calved so far (140 heifers and 90 cows).
- All cows calved more than four days are rapid mastitis tested before their milk is put in the silo for collection.
- Our aim is to milk all cows once a day for the first 3 weeks to reduce the amount of body weight they lose after calving and also to make things easier on farm for staff. We will assess for how long we milk once a day depending on pasture availability and ground conditions.
- SSC was 104,000 this week. We are treating one new case of clinical Mastitis. Fine warm conditions and dry ground are making it easy to keep cows well.
- Cows grazed off farm remain on target to achieve target Condition Score, however we are a little concerned that the late calvers [due 25-8] at Hororata have slowed their rate of improvement. These cows were condition scored on Thursday and had Average BCS of 5 and 10% below 5 so we can still expect them to calve in very good order.
- Eco-n application will start over the next week as paddocks are grazed out.
- When soil temperature rises above 5°C in Spring our farm policy is to begin with a full farm application of Nitrogen usually at 40kg N/ha – this year is no exception. DAP13S with additional Ammonium Sulphate was applied to the areas with less than 2400 kgDM/ha on them during the week. The remainder of the farm will be done following the cows during August.

Next farm walk will be on Tuesday 18th August at 9.00 am.

Farmers or their managers and staff are always welcome to walk with us. Please call to notify us of your intention and bring your plate meter. Phone SIDDC – 03 325 3629

Management Group

Peter Hancox (Farm Manager), Virginia Serra (DairyNZ), George Reveley (for SIDDC).

Lincoln University Dairy Farm - Farm Walk notes

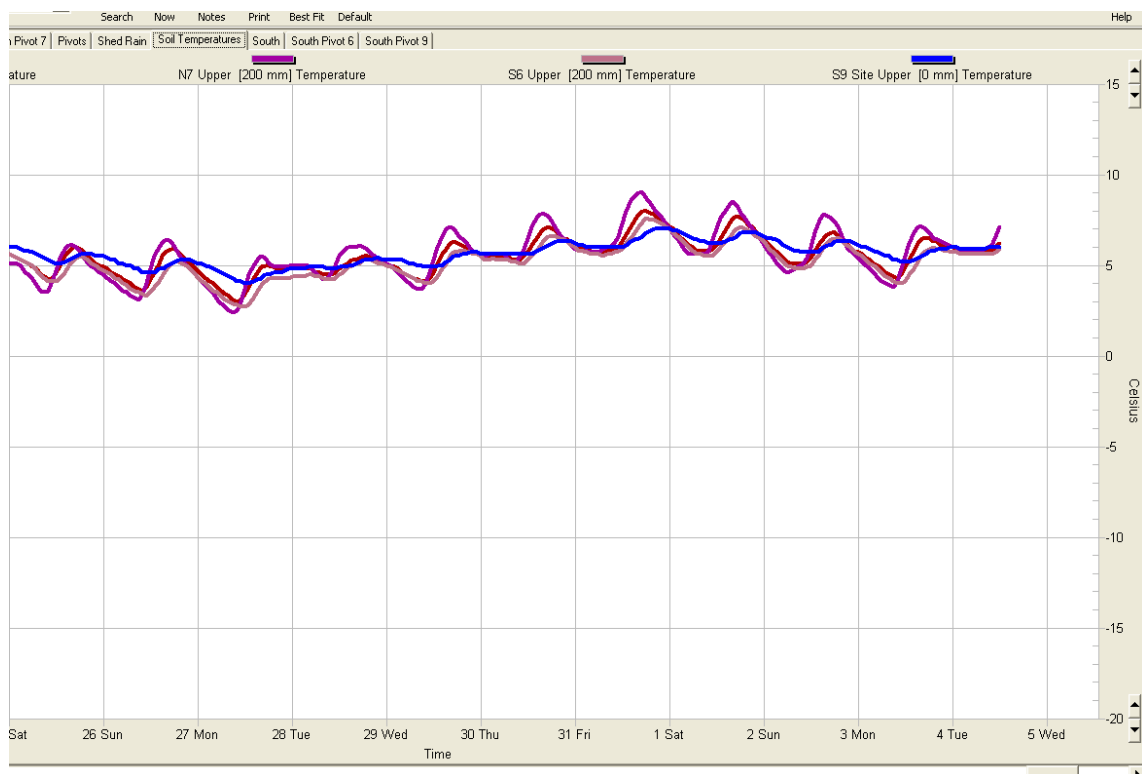
Tuesday, 4th August 2009

Critical issues for the short term

1. **Back fence all mobs always**
2. **Continue Mg supplementation (dust paddocks and water troughs treatments)**
3. **Closely observe milking cows for mastitis**
4. **Stick to the round length established by the spring plan**
5. **Keep cows to the desired residual of 7 clicks**
6. **Begin Nitrogen applications because of increased soil temperature**
7. **Establish and maintain very strict hygiene in the calf sheds**

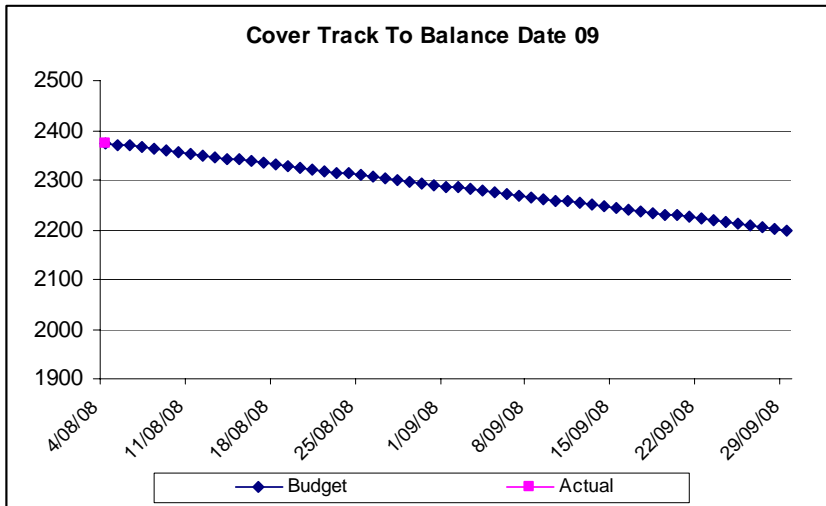
Summary of Key Factors affecting Grazing Management & Animal Performance

8. Soil Temperatures at 9 am have been higher than last week but the average is still about 6°C. The days have been warm with air temperatures up to 15 °C, and there were 3 mild frosts but no rain during the week.



9. PASTURE GROWTH was 21 kg DM/ha, much higher than the 5kg DM/ha we measured last week.
10. Average PASTURE COVER increased to 2,375 kg DM/ha from 2,304 kg DM/ha. Given the lower than expected grass growth rates we had most of the winter and especially in July, we have not achieved our target cover of 2,450 kg DM/ha for the 25th of July.

11. We have started a new graph to track cover until balance date with the pasture cover today as the beginning reference point.



12. The average pasture cover target for the period the farm supply and demand balance is targeted at 2,200 kg DM/ha. (This is normally 22 September to the 4th of October.) This pasture cover can sustain the stocking rate of 4.2 cows /ha, in 20 days round and 17 kg DM grass /cow allocated per day. $(4.2 \text{ cows/ha} * 20 \text{ days} * 17 \text{ kg DM/cow} + 1480 \text{ kg DM/ha /day}) / 2$. (Pre grazing (2,908) + Residual (1,480) / 2). This level of average pasture cover is adequate but if a week of cool weather occurs at that time silage would be required. The other option is to feed more silage and hold a buffer of additional feed as average pasture cover. However, we prefer to take the risk and feed silage only as required.
13. As can be seen in the graph above there is not much difference between now and the end of the period (170kg DM/ha). Holding cows off the platform to allow more cover to accumulate and prompt use of Nitrogen fertiliser being our key strategies.

14. The Feed Wedge Today



The target line in the wedge reflects the pre-grazing target of 3,270 kg DM/ha and a post grazing of 1480 kg DM/ha which gives us the target average pasture cover of 2,375 kg DM/ha. The paddocks that are half grazed are affecting the bottom of the wedge.

15. The key priority for us is to protect the average cover on the farm and we will do it by following the Spring Rotation Plan.

Week Starting	Area budgeted per week	Running total Budget	Actual Area used per week	Running total Actual
4 th August	5.2	5.2	4.7	4.7
11 th August	11.2	16.4		
18 th August	16.5	32.9		
25 th August	23.5	56.4		
1 st September	29.4	85.8		
8 th September	34.6	120.4		
15 th September	38.8	159.2		
TOTAL	159 ha			

16. From the area grazed this week of 4.69 ha, 3.14 ha was used by the milkers, 1 ha by colostrum cows and 0.55 ha by springers. We have been able to use less than budgeted because we have managed to keep cows away for longer than we anticipated.
17. Because of very good ground conditions we have been able to achieve our target residual (7clicks). Back fencing is a crucial part of our system to ensure we protect new growth.
18. We have 141 cows calved so far (118 heifers and 23 cows). 89 of the heifers calved were AB mated. We have 54 AB heifers to date.
19. All cows calved more than four days were rapid mastitis tested before their milk was put in the silo for collection. Our first pickup was last Friday.
20. Our aim is to milk all cows once a day for the first 3 weeks to reduce the amount of body weight they lose after calving, and also to make things easier on farm for staff. We will assess for how long we milk once a day depending on pasture availability and ground conditions.
21. SSC was 231,000 in our second pick up. We are treating two cases of clinical Mastitis. Fine warm conditions and dry ground - cows and people are very happy.
22. Cows grazed off farm remain on target to achieve target Condition Score.
23. Eco-n will be applied from next week
24. When soil temperature rises above 5°C in spring our farm policy is to begin with a full farm application of Nitrogen usually at 40kg N/ha – this year is no exception. Later this week an application of DAP13S with additional Ammonium Sulphate will be applied to the areas with less than 2400 kgDM/ha on them.
25. Paddock S5 is being rolled today. The farm has dried up quite significantly even the wetter paddocks of the South Block.

Next farm walk will be on Tuesday, 11th August 2009.

Farmers or their managers and staff are always welcome to walk with us. Please call to notify us of your intention and bring your plate meter. Phone SIDDC – 03 325 3629

Management Group

Peter Hancox (Farm Manager), Virginia Serra (DairyNZ), George Reveley (for SIDDC).