

# Lincoln University Dairy Farm - Farm Walk notes

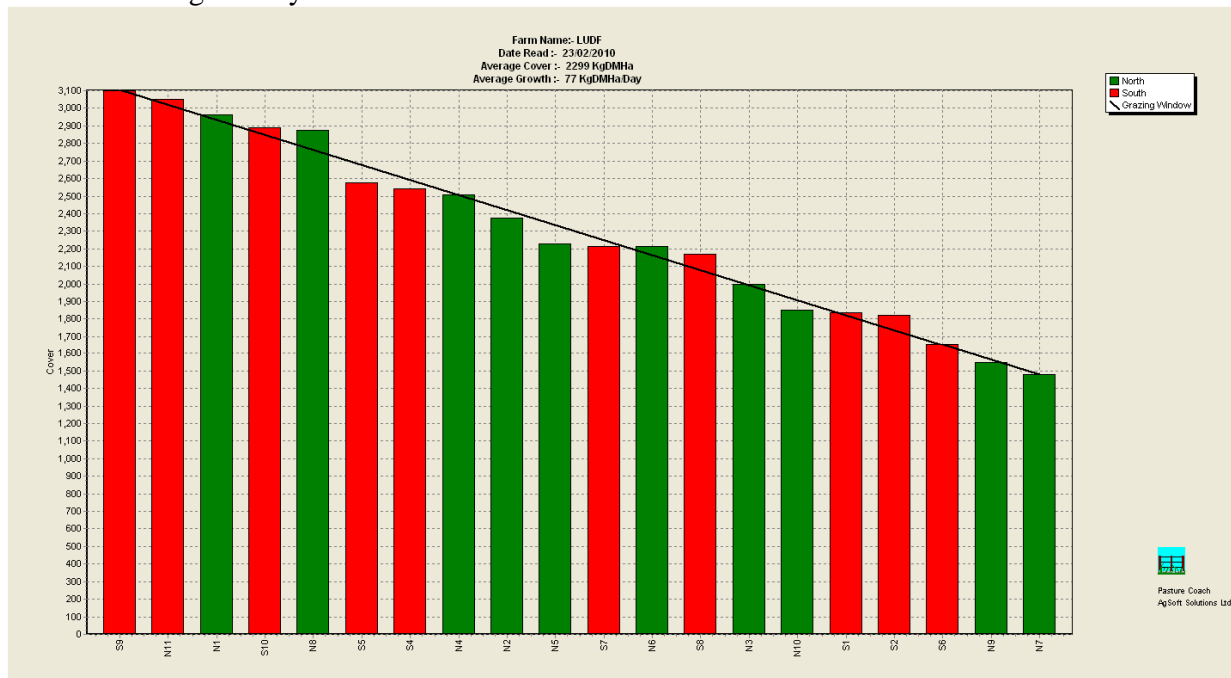
Tuesday, 23<sup>rd</sup> February 2010

## Critical issues for the short term

1. **Maintain pasture quality by regular monitoring and making necessary changes**
2. **Keep grazing residuals to the desired 7 clicks**
3. **Closely observe milking cows for mastitis**
4. **Monitor cow condition to identify light cows that may need differential treatment in coming weeks**

## Summary of Key Factors affecting Grazing Management & Animal Performance

5. Soil temperatures this week 16.2 similar to the 15.5°C we had the previous week. .
6. We had 19 mm of rain over 2 days last week
7. PASTURE GROWTH this week was 77 kg DM/ha, lower than the 93 kg DM/ha grown last week. Average Pasture Cover this week is 2299 kg DM/ha (similar to the 2345 kg DM/ha last week). Pasture grazing residuals have been maintained at 7 rising plate meter “clicks”
8. Feed Wedge Today



The target line in the wedge reflects the pre-grazing target of 3,105 kg DM/ha and a post grazing of 1,480 kg DM/ha, which is the pre-grazing needed to feed the cows considering the stocking rate of 4.34 cows/ha (656 cows/150 ha)), cows eating 17 kg DM/cow/day and a rotation length of 22 days. The feed wedge has a surplus of 0.3 t DM.

9. Last week the herd grazed on average 7.8 ha per day. Round length of 19.2 days
10. No Silage was fed last week.
11. We have started Nitrogen application again. We applied 25 kg N to 36 ha this week.
12. Key management decisions to think about this week: a) Use of Nitrogen going forward. We will keep the 25 kg N/ha after the cows this week and we will start 40 kg N/ha from next week. This will leave room for a last application before the end of the season and stay within budget,

- b) When to get rid of Cull cows: Before deciding about it we need to know who are the low producers and MT cows that are still in the system. On Thursday this week we will do a Herd Test c) When and how to extend the round: We are quite confident to maintain the round length on the 22 days as it is the target at the moment for at least a week. A Feed Budget will give us the Target Average Pasture Cover and Round length we want to achieve until the end of the season.
13. Paddock S3 was roller drilled on the 28<sup>th</sup> of January with Bealey Ryegrass and Weka and Kotare white clover. This paddock has the same weed mix striking as the others have had in the South block. It was sprayed with Preside today.
  14. We are using the soil moisture deficit information from our 4 Aquaflex sites around the farm to schedule our irrigation. 2 days of irrigation was applied last week.
  15. Cows will continue to be offered enough grass to achieve their potential intake and will be moved on when grazing residual targets are achieved.
  16. We had 1 new case of mastitis this week. SCC has been between 168,000 - 170,000.
  17. There were 6 new lame cows this week. These cows are being milked once per day while they recover from the injury.
  18. 654 cows are milking into the silo. Cows are producing 1.45 kg MS/cow/day (last week 1.44) and 5.99 kg MS/ha/day (5.94 last week).
  19. Bulls were removed from the cows on the 7<sup>th</sup> of January. This gave us a total of 10 weeks of mating 6 weeks of AI and 4 weeks natural mating. Pregnancy test done last week found 87% of cows in calf. So there are 13% of cows to do rechecks.

Next farm walk will be on **Tuesday, 2<sup>nd</sup> March 2010, at 9.00 am.**

Farmers or their managers and staff are always welcome to walk with us. Please call to notify us of your intention and bring your plate meter. Phone SIDDC – 03 325 3629

### **Management Group**

---

Peter Hancox (Farm Manager), George Reveley (for SIDDC), Virginia Serra (DairyNZ).

# Lincoln University Dairy Farm - Farm Walk notes

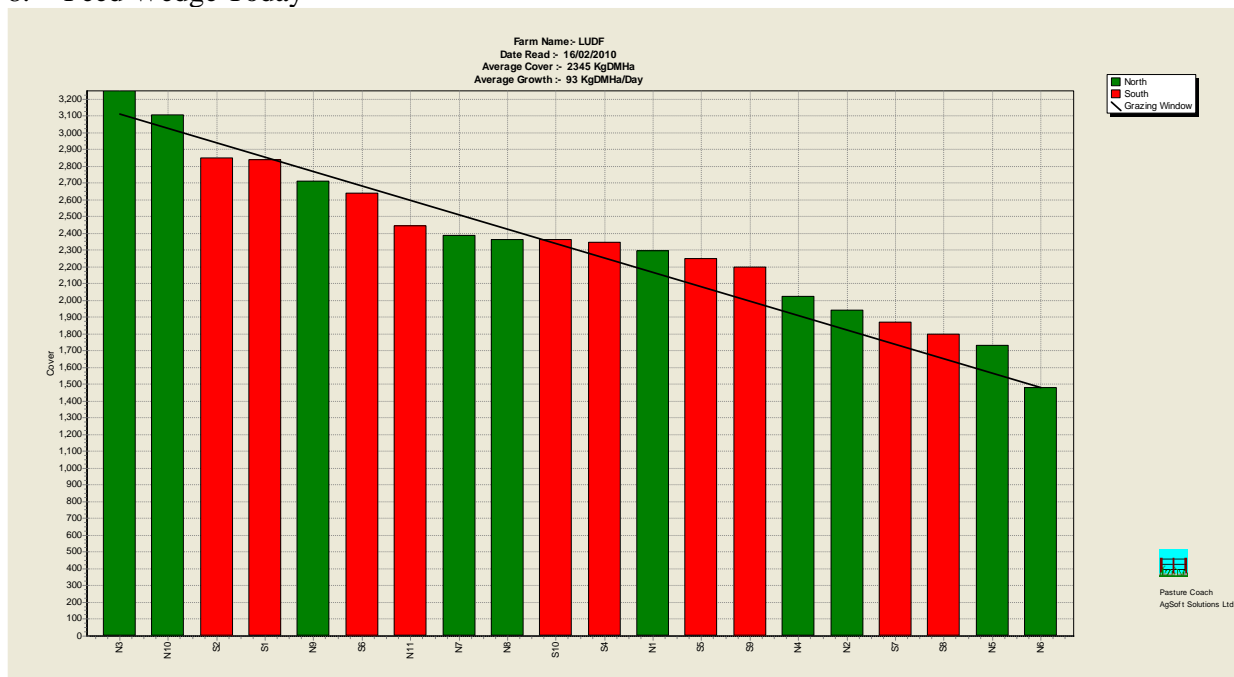
Tuesday, 15<sup>th</sup> February 2010

## Critical issues for the short term

1. Maintain pasture quality by regular monitoring and making necessary changes
2. Keep grazing residuals to the desired 7 clicks
3. Closely observe milking cows for mastitis
4. Monitor cow condition to identify light cows that may need differential treatment in coming weeks

## Summary of Key Factors affecting Grazing Management & Animal Performance

5. Soil temperatures have dropped this week to 16.5 °C from the 17.6°C we had the previous week. .
6. We had 4 mm of rain over 3 days last week
7. PASTURE GROWTH this week was 93 kg DM/ha, similar to the 90 kg DM/ha grown last week. Average Pasture Cover this week is 2345 kg DM/ha (similar to the 2310 kg DM/ha last week). Pasture grazing residuals have been maintained at 7 rising plate meter “clicks”.
8. Feed Wedge Today



The target line in the wedge reflects the pre-grazing target of 3,114 kg DM/ha and a post grazing of 1480 kg DM/ha, which is the pre-grazing needed to feed the cows considering the stocking rate of 4.37 cows/ha (656 cows/150 ha), cows eating 17 kg DM/cow/day and a rotation length of 22 days. The feed wedge has a surplus of 7 t DM. It is expected the area used per day (round length) will increase to 21- 22days this week.

9. Last week the herd grazed on average 7.28 ha per day. Round length of 20.6 days,
10. No Silage was fed last week.
11. No nitrogen fertiliser has been applied this week and none is planned for the next week.
12. Paddock S3 was prepared for sowing but was delayed because of the rain. It was roller drilled on the 28<sup>th</sup> of January with Bealey Ryegrass and Weka and Kotare white clover. The strike of grass and clover is very even. This paddock has the same weed mix striking as the others have had in the South block. Herbicide spraying will most likely be done prior to the first nip off of the new pasture later in February.

13. The soil moisture deficit information from our 4 Aquaflex sites around the farm is used to schedule our irrigation. 3 days of irrigation was applied last week.
14. Cows will continue to be offered enough grass to achieve their potential intake and will be moved on when grazing residual targets are achieved.
15. 1 new cases of mastitis this week. SCC has been between 144,000 - 186,000.
16. 3 new lame cows this week. These cows are being milked once per day while they recover from the injury.
17. 656 cows are milking into the silo. Cows are producing 1.44 kg MS/cow/day (last week 1.51) and 5.94 kg MS/ha/day (6.20 last week).
18. Bulls were removed from the cows on the 7th of January. This gave us a total of 10 weeks of mating 6 weeks of AI and 4 weeks natural mating.

Next farm walk will be on **Tuesday, 23<sup>rd</sup> February 2010, at 9.00 am.**

Farmers or their managers and staff are always welcome to walk with us. Please call to notify us of your intention and bring your plate meter. Phone SIDDC – 03 325 3629

**Management Group**

---

Peter Hancox (Farm Manager), George Reveley (for SIDDC), Virginia Serra (DairyNZ).

# Lincoln University Dairy Farm - Farm Walk notes

Tuesday, 9<sup>th</sup> February 2010

## Critical issues for the short term

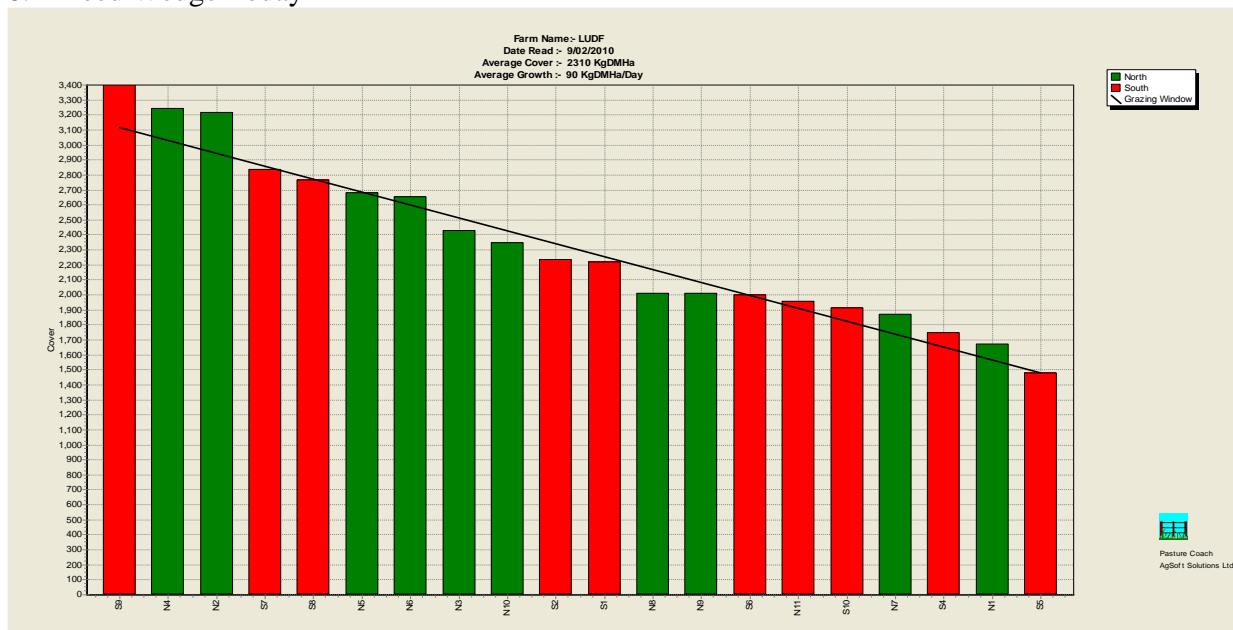
1. Maintain pasture quality by regular monitoring and making necessary changes
2. Keep grazing residuals to the desired 7 clicks
3. Closely observe milking cows for mastitis
4. Monitor cow condition to identify light cows that may need differential treatment in coming weeks

## Summary of Key Factors affecting Grazing Management & Animal Performance

5. Soil temperatures have increased this week, the average for the week was 17.6°C.



6. 1 mm of rain recorded on Sunday.
7. PASTURE GROWTH this week was 90 kg DM/ha, similar to the 82 kg DM/ha grown last week. Average Pasture Cover this week is 2310 kg DM/ha (down from 2320 kg DM/ha last week). Pasture grazing residuals have been maintained at 7 rising plate meter “clicks”.
8. Feed Wedge Today



The target line in the wedge reflects the pre-grazing target of 3,114 kg DM/ha and a post grazing of 1480 kg DM/ha, which is the pre-grazing needed to feed the cows considering the stocking rate of 4.37 cows/ha (656 cows/150 ha), cows eating 17 kg DM/cow/day and a rotation length of 22 days. The feed wedge has a surplus of 5.6 t DM. We expect that area used per day (round length) will increase to 21- 22 days this week.

9. Last week the herd grazed 54.2ha which is 1/20<sup>th</sup> of the farm each day.
10. No silage fed last week.
11. No nitrogen fertiliser has been applied this week and none is planned for the next week.
12. The new grass in Paddock S9 (sown 9 weeks ago) was sprayed with herbicide last week. This paddock was grazed 3 weeks ago for the first time, mown after grazing (to help control nettles) and the regrowth was sprayed with Preside herbicide. Cover is quite high in this paddock but due to withholding period for herbicide we have not been able to graze it.
13. Paddock S3 was prepared for sowing but was delayed because of the rain. It was roller drilled on the 28<sup>th</sup> of January (10 days ago) with Bealey Ryegrass and Weka and Kotare white clover. The strike of grass and clover is very even. This paddock has the same weed mix striking as the others have had in the South block. Herbicide spraying will most likely be done after the first nip off of the new pasture later in February.
14. We are using the soil moisture deficit information from our 4 Aquaflex sites around the farm to schedule our irrigation. 5.5 days of irrigation was applied last week.
15. Cows will continue to be offered enough grass to achieve their potential intake and will be moved on when grazing residual targets are achieved.
16. We had 4 new cases of mastitis this week. SCC has been between 196,000 - 198,000.
17. There were 3 new lame cows this week, we have 15 in total. These cows are being milked once per day while they recover from the injury.
18. 656 cows are milking into the silo. Cows are producing 1.51 kg MS/cow/day (last week 1.48) and 6.20 kg MS/ha/day (6.09 last week).
19. Bulls were removed from the cows on the 7<sup>th</sup> of January. This gave us a total of 10 weeks of mating, 6 weeks of AI and 4 weeks natural mating.

Next farm walk will be on **Tuesday, 16<sup>th</sup> February 2010, at 9.00 am.**

Farmers or their managers and staff are always welcome to walk with us. Please call to notify us of your intention and bring your plate meter. Phone SIDDC – 03 325 3629

### **Management Group**

---

Peter Hancox (Farm Manager), George Reveley (for SIDDC), Virginia Serra (DairyNZ).

# Lincoln University Dairy Farm - Farm Walk notes

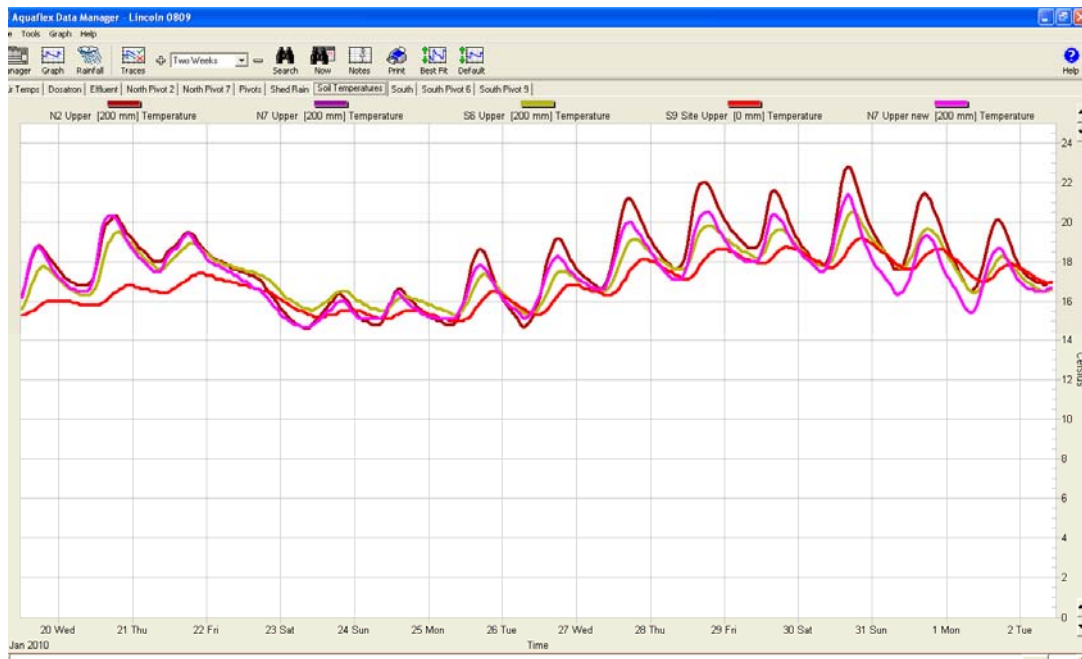
Tuesday, 2<sup>nd</sup> February 2010

## Critical issues for the short term

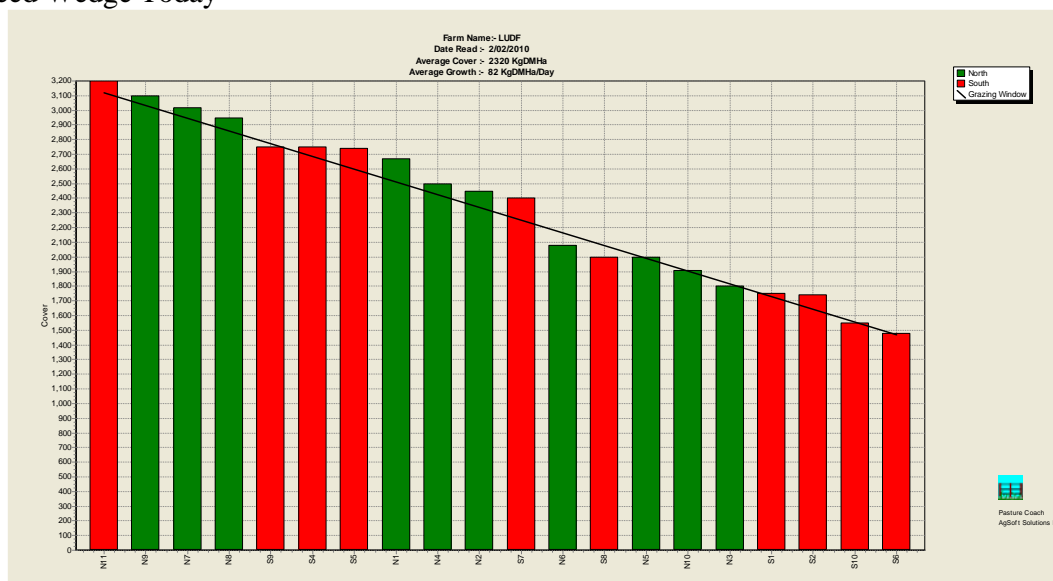
1. Maintain pasture quality by regular monitoring and making necessary changes
2. Keep grazing residuals to the desired 7 clicks
3. Closely observe milking cows for mastitis

## Summary of Key Factors affecting Grazing Management & Animal Performance

4. Soil temperatures have increased a bit this week, the average for the week being 17°C.



5. No rain this week.
6. PASTURE GROWTH was 82 kg DM/ha, similar to the 80 kg DM/ha grown last week. Silage was fed out over the last week at 3.4kgDM/cow/day, the silage and pasture growth above demand has increased cover to 2320 kg DM/ha (up from 2210 kg DM/ha last week). Pasture grazing residuals have been maintained at 7 rising plate meter “clicks”.
7. Feed Wedge Today



The target line in the wedge reflects the pre-grazing target of 3040 kg DM/ha and a post grazing of 1480 kg DM/ha, which is the pre-grazing needed to feed the cows considering the stocking rate of 4.37 cows/ha (656 cows/150 ha), cows eating 17 kg DM/cow/day and a rotation length of 21 days. The feed wedge has a surplus of 7 t DM. Last week we were on a 21.5 day round.

8. Over the last week the cows were eating 74 kg DM/ha/day, the equivalent of 14.8 kg DM/ha/day is coming from silage.
9. Nitrogen fertiliser (Urea) was applied at 30kgN/ha to 36 ha during the week.
10. This week we will not need to feed any silage (we stopped 2 days ago). Urea applications for the week finished as well.
11. The new grass in Paddock S9 was sprayed with herbicide this week. This paddock was grazed last week for the first time this week, mown after grazing (to control nettles) and the regrowth was sprayed with the herbicide. The paddock was sprayed out on December the 4<sup>th</sup> – 8 weeks ago.
12. Paddock S3 was prepared for sowing two weeks ago but was delayed because of the rain. It was sown with Bealey ryegrass last Thursday.
13. We are using the soil moisture deficit information from our 4 Aquaflex sites around the farm to schedule our irrigation. 4 days of irrigation was applied to the North Block and 2 days to the South Block this past week.
14. Cows will continue to be offered enough grass to achieve their potential intake and will be moved on when grazing residual targets are achieved.
15. No new cases of mastitis this week. SCC has been between 170,000 - 171,000.
16. There were 4 new lame cows this week, we have 20 in total. These cows are being milked once per day while they recover from the injury.
17. 656 cows are milking into the silo. Cows are producing 1.48 kg MS/cow/day (last week 1.49) and 6.09 kg MS/ha/day (6.15 last week).

Next farm walk will be on **Tuesday, 9<sup>th</sup> February 2010, at 9.00 am.**

Farmers or their managers and staff are always welcome to walk with us. Please call to notify us of your intention and bring your plate meter. Phone SIDDC – 03 325 3629

### **Management Group**

---

Peter Hancox (Farm Manager), George Reveley (for SIDDC), Virginia Serra (DairyNZ).