

Lincoln University Dairy Farm - Farm Walk notes

Tuesday, 26th January 2010

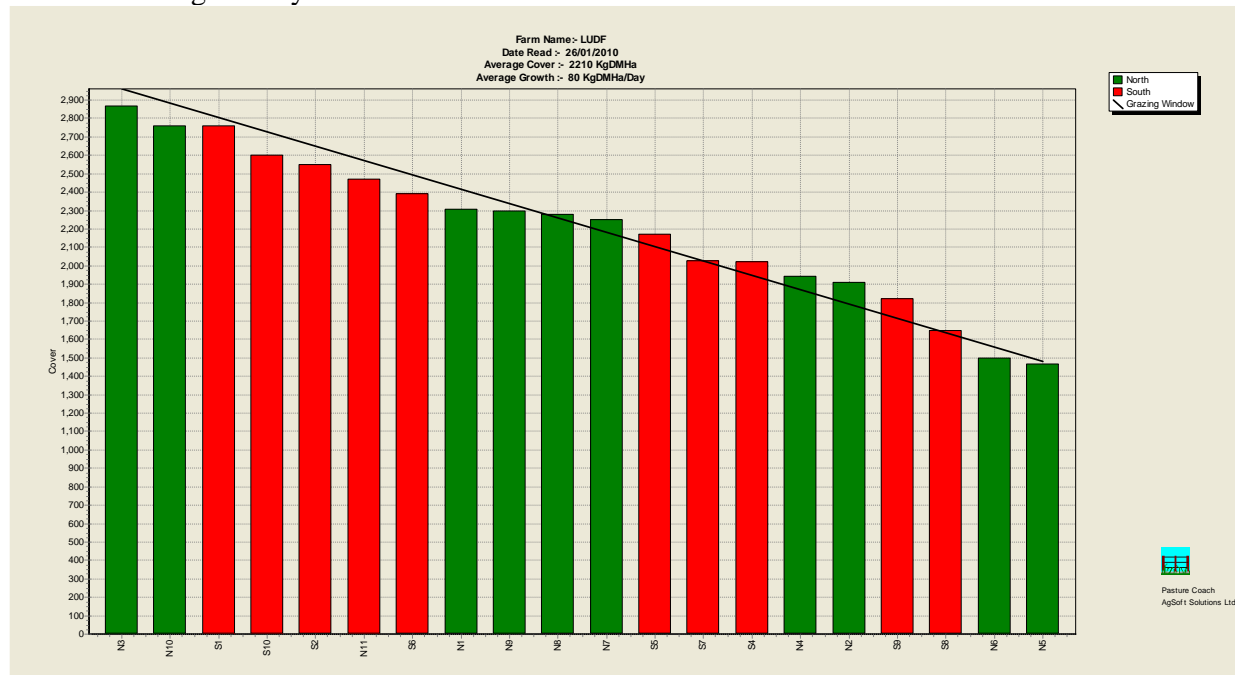
Critical issues for the short term

1. Maintain pasture quality by regular monitoring and making necessary changes
2. Keep grazing residuals to the desired 7 clicks
3. Closely observe milking cows for mastitis

Summary of Key Factors affecting Grazing Management & Animal Performance

4. PASTURE GROWTH this week was 80kg DM/ha, up on 66 grown last week. Silage was fed out over the last week at 4.7kgDM/cow/day, the silage and pasture growth above demand has increased cover to 2210kgDM/ha (up from 2130 kg DM/ha last week). Pasture grazing residuals have been maintained at 7 rising plate meter “clicks”.

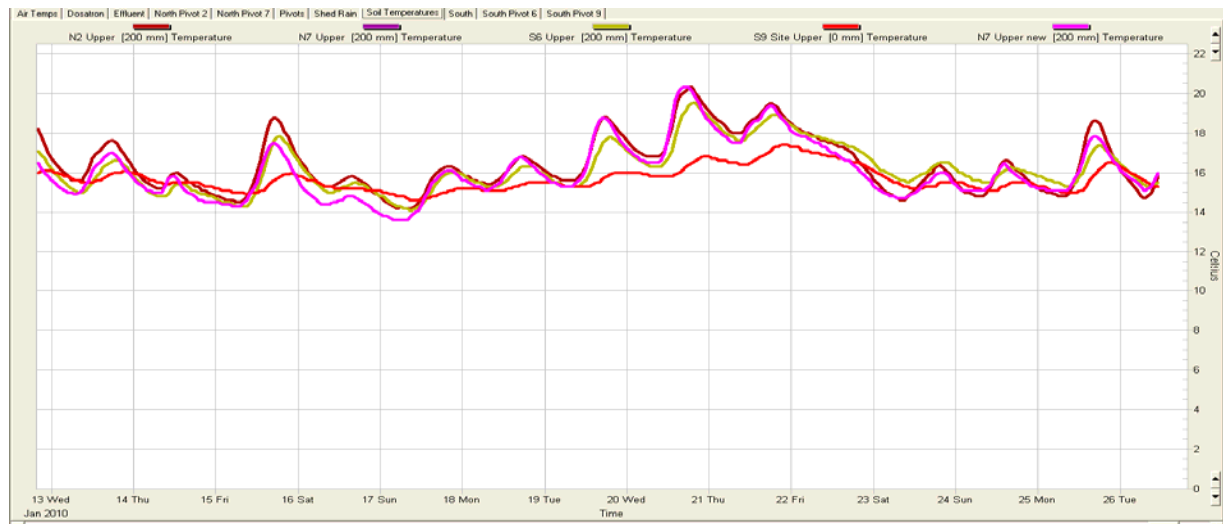
5. Feed Wedge Today



The target line in the wedge reflects the pre-grazing target of 2,962 kg DM/ha and a post grazing of 1480 kg DM/ha, which is the pre-grazing needed to feed the cows considering the stocking rate of 4.36 cows/ha (656 cows/150.5 ha)), cows eating 17 kg DM/cow/day and a rotation length of 20 days.

6. The cows are eating 77kg DM/ha/day, the equivalent of 20kgDM/ha/day is coming from silage. The feed wedge has a deficit of 3t DM.
7. Nitrogen fertiliser (Urea) was applied at 30kgN/ha to 53 ha during the week.
8. In the next week we expect warmer weather, meaning growth rates continue about or just above demand. So we will:
 - continue feeding silage at the lower level of 3 kgDM/cow/day until pre grazing levels reach 2960kgDM/ha anticipating a 20 day round - this is likely in 3-4 days time.
 - apply nitrogen to 10% of the farm at a rate of 30kgN/ha to boost growth. Nitrogen deficiency and patchiness in pastures (uneven colour) is showing up across the farm, particularly in the heavy clay soils, which have been wet over the last 4 weeks. We will apply N up to 4 days post grazing.

9. The new grass in Paddock S9 is quite weedy, with a lot of nettles (due to its history as a sheep farm). This was be grazed by cows for the first time this week, mown after grazing (to control nettles) and now regrowth will be sprayed with a herbicide. It was sprayed out on December the 4th – 7 weeks ago.
10. Paddock S3 was prepared for sowing last week but has been delayed because of the rain. Hopefully it will be sown later this week with Bealey ryegrass.
11. Rainfall 24mm during the week.
12. Soil temperatures have varied a lot during the week, the average remaining low for this time of year at 15.9°C.



13. We are using the soil moisture deficit information from our 4 Aquaflex sites around the farm to schedule our irrigation. Half a day of irrigation was applied to the North Block this past week.
14. Cows will continue to be offered enough grass to achieve their potential intake and will be moved on when grazing residual targets are achieved.
15. We had one new cases of mastitis this week. SCC has been between 110,000 - 144,000.
16. There were 12 new lame cows this week, we have 16 in total. These cows are being milked once per day while they recover from the injury.
17. 655 cows are milking into the silo. Cows are producing 1.49 kg MS/cow/day (last week 1.46) and 6.15 kg MS/ha/day (6.04 last week).
18. Bulls were removed from the cows 7th January. This gave us a total of 10 weeks of mating, 6 weeks of AI and 4 weeks natural mating.
19. Our first pregnancy test was done during the week, 526 cows (80%) judged pregnant at 6 weeks post-mating, of 660 peak cows milked.

Next farm walk will be on **Tuesday, 2nd February 2010, at 9.00 am.**

Farmers or their managers and staff are always welcome to walk with us. Please call to notify us of your intention and bring your plate meter. Phone SIDDC – 03 325 3629

Management Group

Peter Hancox (Farm Manager), George Reveley (for SIDDC), Virginia Serra (DairyNZ).

Lincoln University Dairy Farm - Farm Walk notes

Tuesday, 19th January 2010

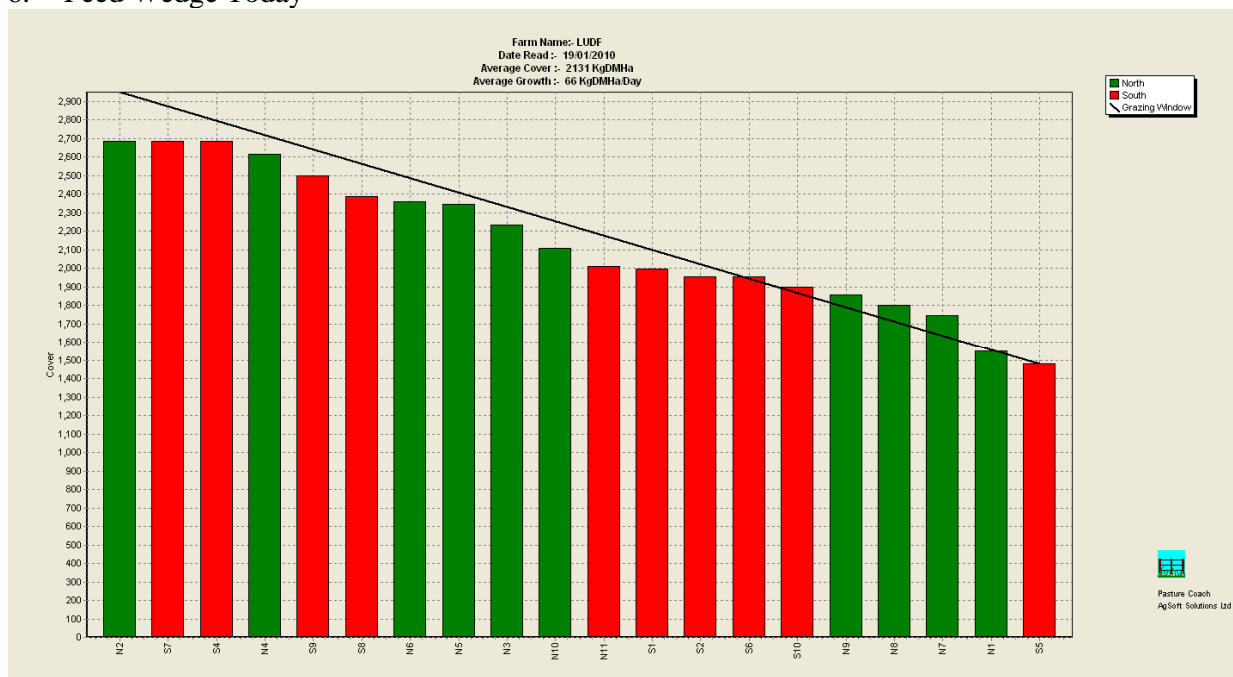
Critical issues for the short term

1. Maintain pasture quality by regular monitoring and making necessary changes
2. Keep grazing residuals to the desired 7 clicks
3. Continue Mg supplementation in the water
4. Closely observe milking cows for mastitis

Summary of Key Factors affecting Grazing Management & Animal Performance

5. PASTURE GROWTH this week was 66kg DM/ha, up slightly on 63 grown last week. Silage was fed out over the last week at 4.6kgDM/cow/day, which has increased cover to 2130kgDM/ha (up from 2070 kg DM/ha last week).

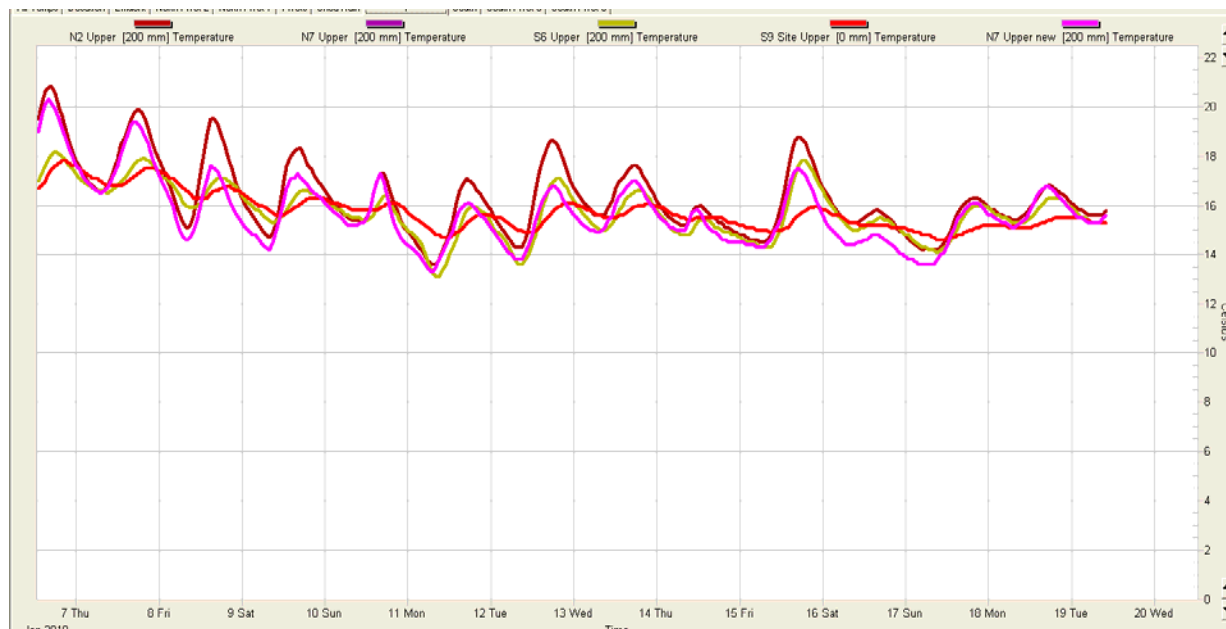
6. Feed Wedge Today



The target line in the wedge reflects the pre-grazing target of 2,951 kg DM/ha and a post grazing of 1480 kg DM/ha, which is the pre-grazing needed to feed the cows considering the stocking rate of 4.3 cows/ha (657 cows/152 ha), cows eating 18 kg DM/cow/day and a rotation length of 19 days.

7. The cows are eating 76 DM/ha/day, the equivalent of 19kgDM/ha/day is coming from silage, and 57 from pasture. With a growth rate of 66 the extra 9kgDM/ha/day (difference between 66 grown and 57 eaten) has raised the farm cover. The feed wedge has a deficit of 10t DM.
8. In the next week the cooler weather is expected to continue, meaning growth rates continue below cow demand. It is planned to:
 - continue feeding silage at the lower level of 3.2 kgDM/cow/day
 - hold grazing round out at 19 days
 - apply nitrogen to 40% of the farm at a rate of 30kgN/ha to boost growth. Nitrogen deficiency and patchiness in pastures (uneven colour) is showing up across the farm, particularly in the heavy clay soils, which have been wet over the last 3 weeks. We will apply N up to 2 days pre-grazing, to 4 days post grazing.

9. The new grass in Paddock S9 is quite weedy, with a lot of nettles (due to its history as a sheep farm). This will be grazed by cows for the first time this week, mown after grazing (to control nettles) then regrowth will be sprayed with a herbicide. It was sprayed out on December the 4th – 6 weeks ago.
10. Paddock S3 is being cultivated and will be sown into Bealey ryegrass in the next few days – weather permitting.
11. Soil temperatures have remained low for the week, around 15°C.



12. We are using the soil moisture deficit information from our 4 Aquaflex sites around the farm to schedule our irrigation. No irrigation was applied this past week.
13. Cows will continue to be offered enough grass to achieve their potential intake and will be moved on when grazing residual targets are achieved.
14. No new cases of mastitis this week. SCC has been between 150,000 - 171,000.
15. 3 new lame cows this week, 18 in total. These cows are being milked once per day while recovering from the injury.
16. 655 cows are milking into the silo. Cows are producing 1.46 kg MS/cow/day (last week 1.48) and 6.04 kg MS/ha/day (6.09 last week).
17. Continuing with Magnesium supplementation. The milking herd receives 40g of Mag Chloride/cow through the dosatron.
18. Bulls were removed from the cows 7th January. This gave us a total of 10 weeks of mating 6 weeks of AI and 4 weeks natural mating.
19. Our first pregnancy test was done during the week, 526 cows (80%) judged pregnant at 6 weeks post-mating, of 660 peak cows milked.

Next farm walk will be on **Tuesday, 26th January 2010, at 9.00 am.**

Farmers or their managers and staff are always welcome to walk with us. Please call to notify us of your intention and bring your plate meter. Phone SIDDC – 03 325 3629

Management Group

Peter Hancox (Farm Manager), George Reveley (for SIDDC), Virginia Serra (DairyNZ).

Lincoln University Dairy Farm - Farm Walk notes

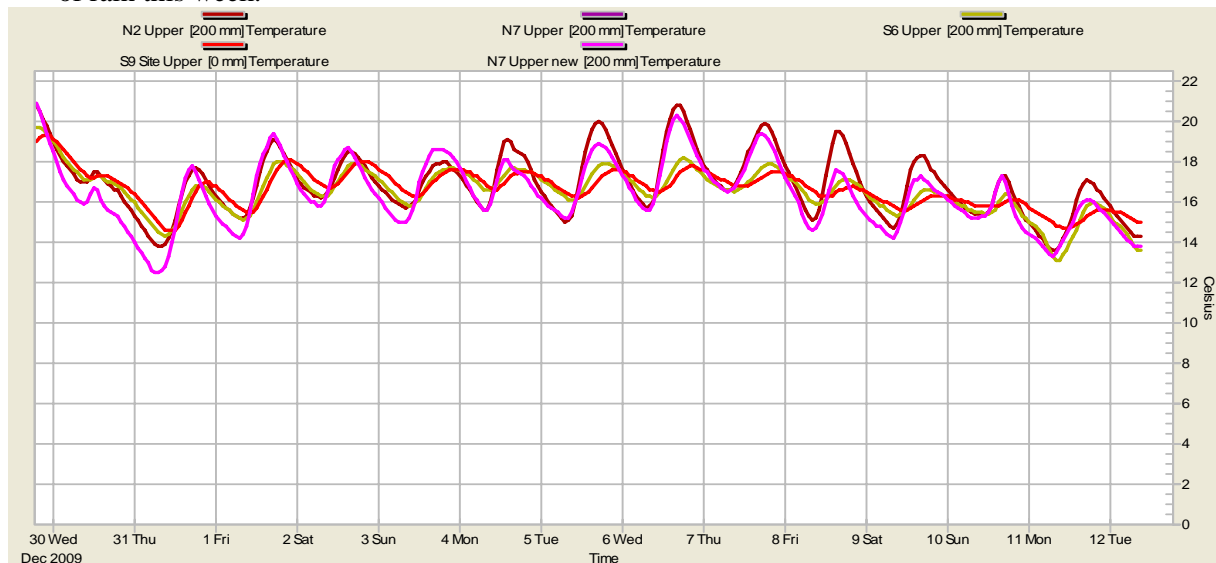
Tuesday, 12th January 2010

Critical issues for the short term

1. Maintain pasture quality by regular monitoring and making necessary changes
2. Keep grazing residuals to the desired 7 clicks
3. Continue Mg supplementation in the water
4. Closely observe milking cows for mastitis

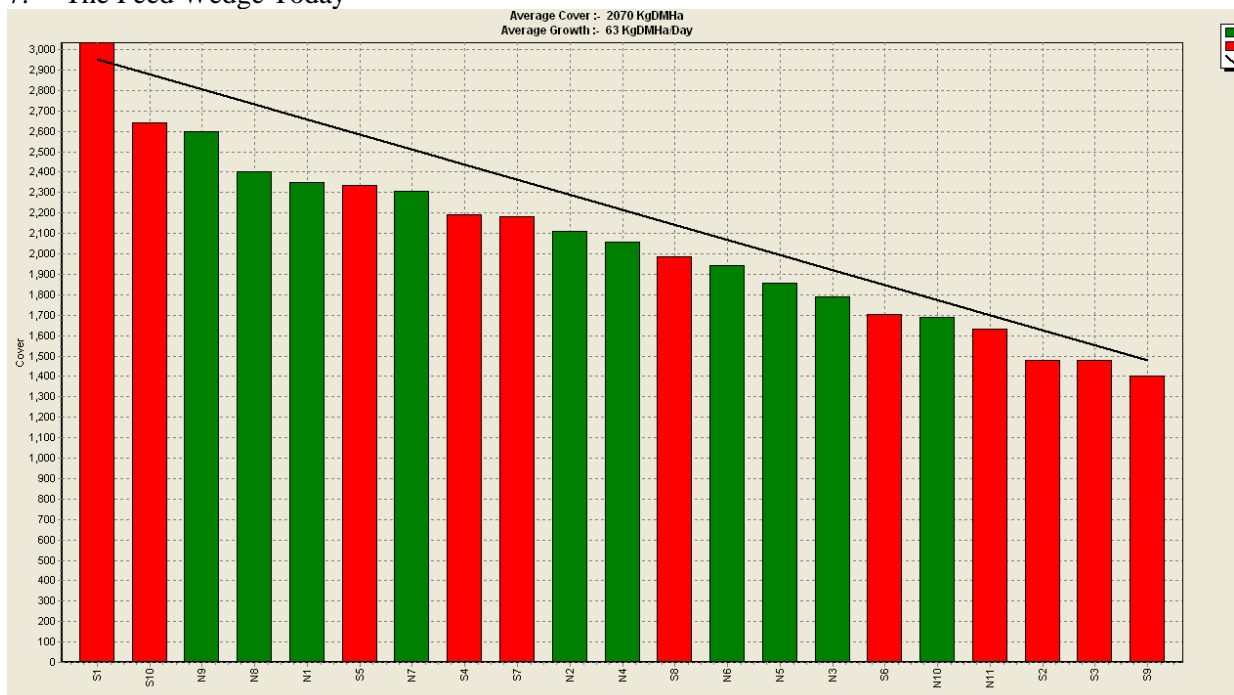
Summary of Key Factors affecting Grazing Management & Animal Performance

5. Soil Temperatures at 9.00 am averaged 15.1°C for the week, 0.7 °C lower than last week. This week the weather has been changeable again with quite cold southerlies at times. We had 25 mm of rain this week.



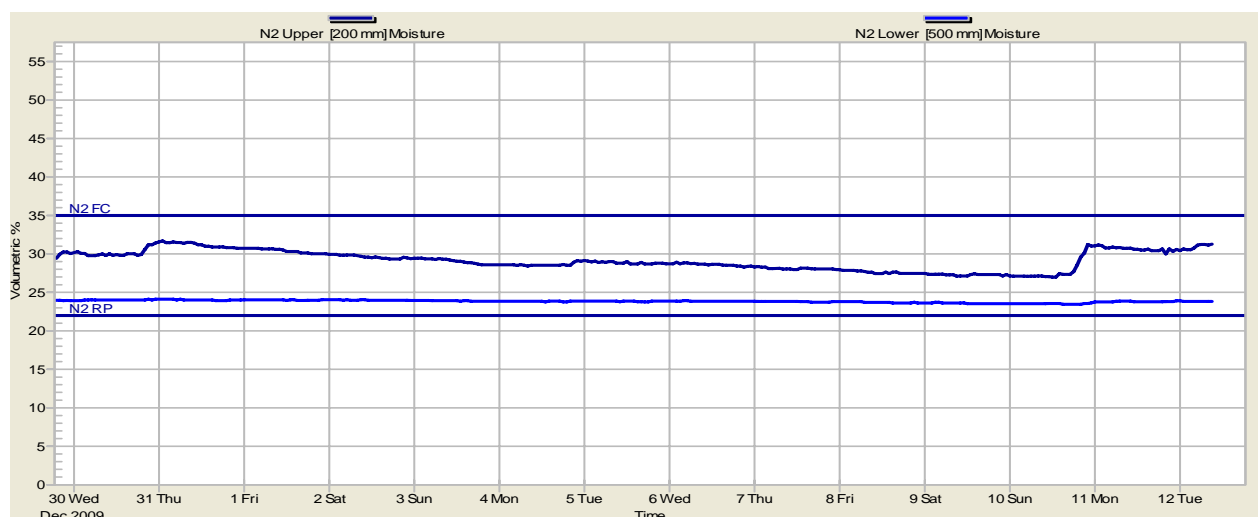
6. Last week the grazing round used 61.01 ha this is 1/18th of the farm per day, one day faster than last week. No silage fed last week.

7. The Feed Wedge Today



The target line in the wedge reflects the pre-grazing target of 2,951 kg DM/ha and a post grazing of 1480 kg DM/ha, which is the pre-grazing needed to feed the cows considering the stocking rate of 4.3 cows/ha (660 cows/152 ha)), cows eating 18 kg DM/cow/day and a rotation length of 19 days. The demand from the herd is 77 DM/ha/day. This Feed wedge has a deficit of 26t DM. With this deficit and the prospect of cooler weather we will need to feed silage to hold the round to a minimum of 19 days.

8. PASTURE GROWTH this week was 63kg DM/ha, lower than the 73kg DM/ha grown last week.
9. Average PASTURE COVER decreased to 2070 kg DM/ha, from 2,223 kg DM/ha.
10. Stocking rate is currently 4.34 cows per ha because paddock S3 has been sprayed out.
11. Paddock S9 had a light grazing by calves late last week and is now back in the round. Paddock S3 was sprayed out last Friday and will be cultivated and re sown over the next ten days.
12. We are using the soil moisture deficit information from our 4 Aquaflex sites around the farm to schedule our irrigation. Our aim in the late spring and summer, is to keep soil moisture levels just far enough below Field Capacity to allow for almost all rain events without exceeding Field Capacity and having leaching occur. This allows us to survive extended periods of evapo-transpiration rates that are higher than we can replace by irrigation on a daily basis and also gives us some time if a breakdown occurs. We make our energy and water savings by stopping irrigating earlier in the autumn and allowing soil moisture deficits to approach Stress Point just before the autumn rains.
13. This week we had 5 days of irrigation and 25mm of rain over the last two nights. The soil moisture graph for N2 shows the topsoil rising just below the field capacity line, this is where we want soil moisture to be so will irrigate accordingly.



14. Cows will continue to be offered enough grass to achieve their potential intake and will be moved on when grazing residual targets are achieved.
15. We had two new cases of mastitis this week. SCC has been between 133,000 - 177,000.
16. There were 8 new lame cows this week, we have 18 in total. These cows are being milked once per day while they recover from the injury.
17. 655 cows are milking into the silo. Cows are producing 1.48 kg MS/cow/day (last week 1.48) and 6.09 kg MS/ha/day (6.09 last week).

18. Continuing with Magnesium supplementation. The milking herd receives 40g of Mag Chloride/cow through the dosatron.
19. Bulls were removed from the cows last Thursday the 7th January. This gave us a total of 10 weeks of mating, 6 weeks of AI and 4 weeks natural mating. Our first pregnancy test will be done this Friday to find out how many cows have held to AI insemination
20. This is the fourth week we have not applied fertiliser Nitrogen. We do not expect to use any fertiliser N until February because in previous seasons the farm has grown enough pasture without using N.

Next farm walk will be on **Tuesday, 19th January 2010, at 9.00 am.**

Farmers or their managers and staff are always welcome to walk with us. Please call to notify us of your intention and bring your plate meter. Phone SIDDC – 03 325 3629

Management Group

Peter Hancox (Farm Manager), George Reveley (for SIDDC), Virginia Serra (DairyNZ).

Lincoln University Dairy Farm - Farm Walk notes

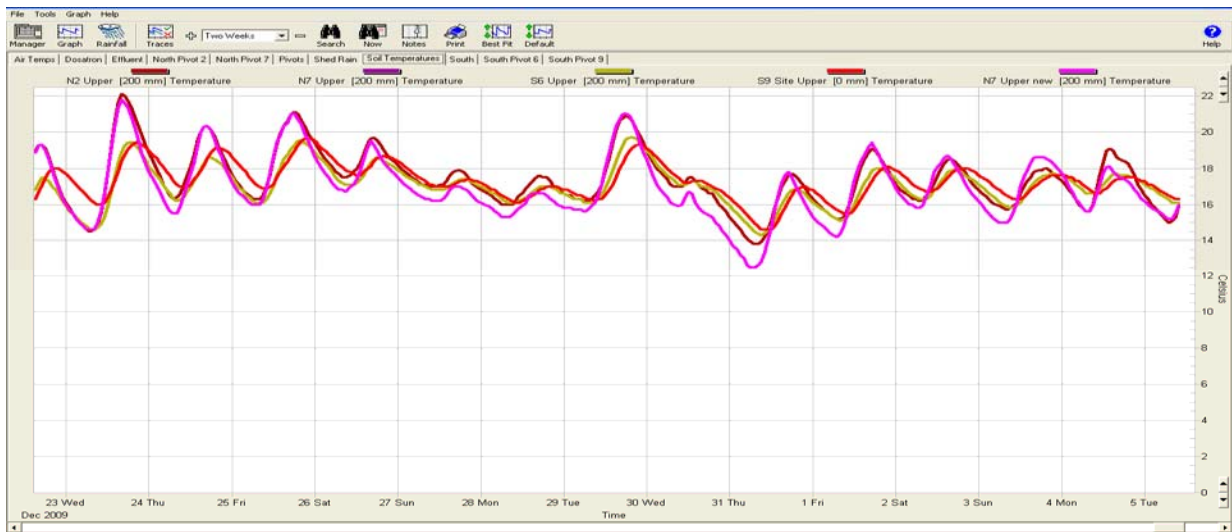
Tuesday, 5th January 2010

CRITICAL ISSUES FOR THE SHORT TERM

1. Maintain pasture quality by regular monitoring and making necessary changes
2. Keep grazing residuals to the desired 7 clicks
3. Continue Mg supplementation in the water
4. Closely observe milking cows for mastitis

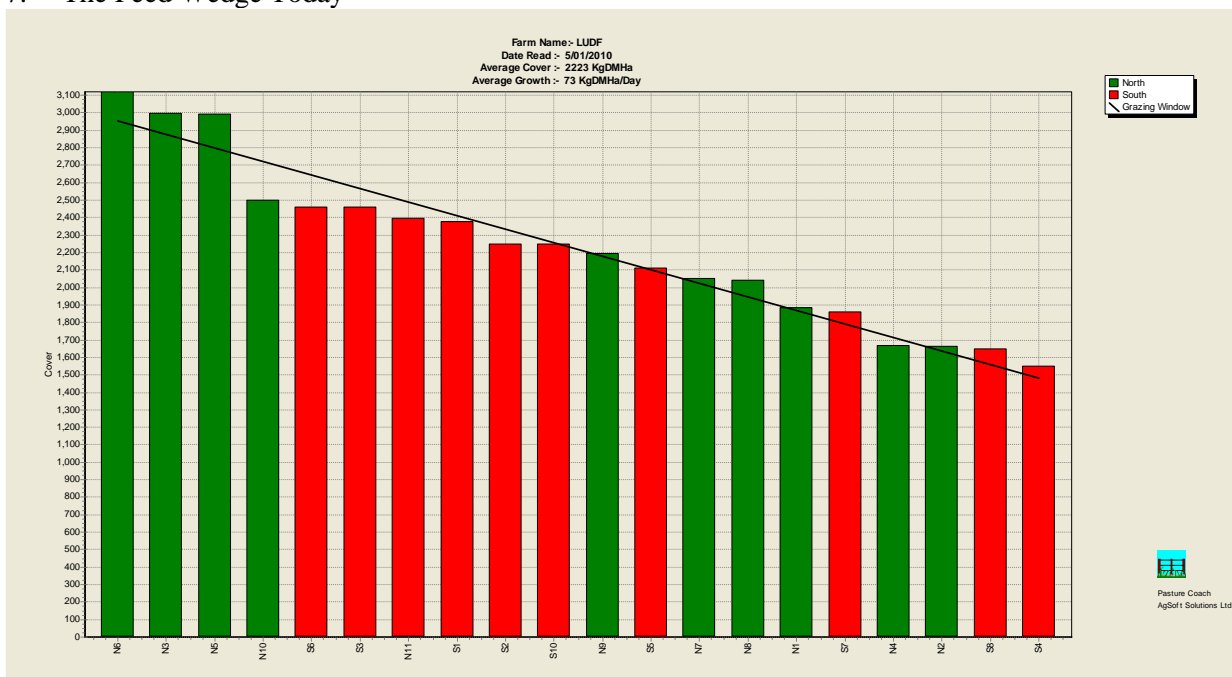
Summary of Key Factors affecting Grazing Management & Animal Performance

5. Soil Temperatures at 9.00 am averaged 15.8°C for the week, 0.5 °C lower than last week. This week the weather has been changeable again with quite cold southerlies at times. We had 3.0 mm of rain this week.



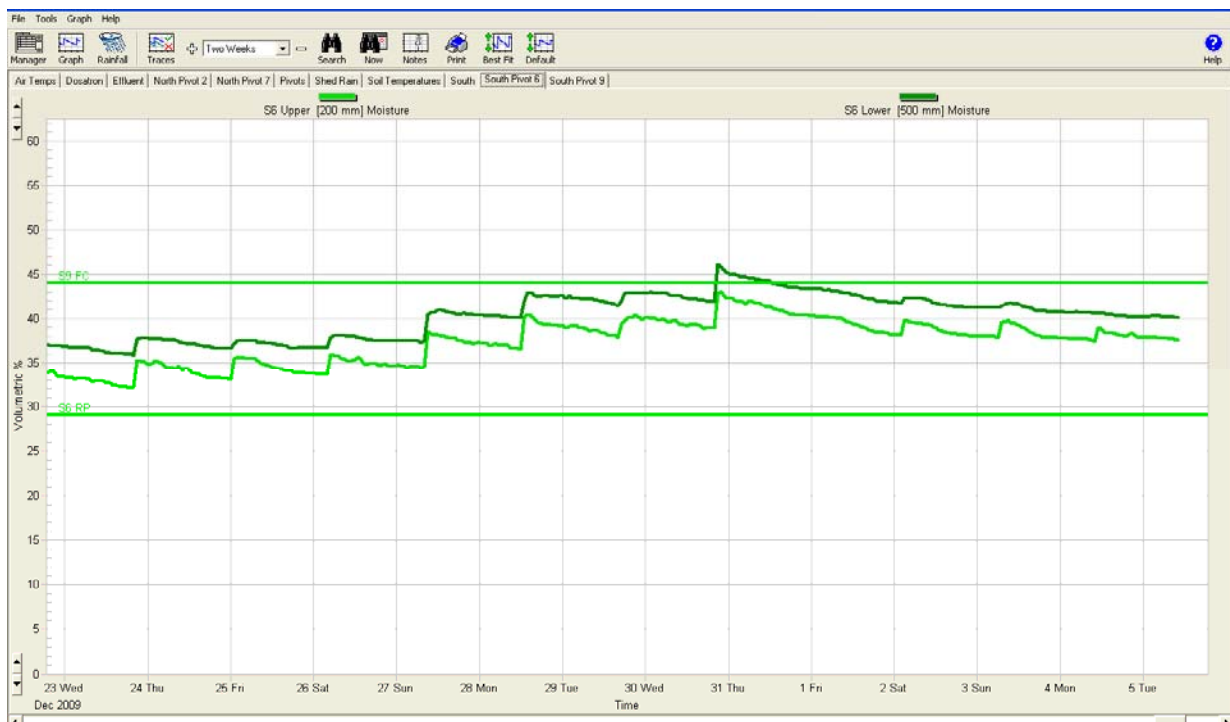
6. Last week the grazing round used 55.3 ha this is 1/19th of the farm per day. The same as last week. No silage fed last week.

7. The Feed Wedge Today



The target line in the wedge reflects the pre-grazing target of 2,951 kg DM/ha and a post grazing of 1480 kg DM/ha, which is the pre-grazing needed to feed the cows considering the stocking rate of 4.3 cows/ha (660 cows/152 ha)), cows eating 18 kg DM/cow/day and a rotation length of 19 days. The demand from the herd is 77 DM/ha/day. This feed wedge has a surplus of 1.0t DM. A small surplus is expected to be generated over the next couple of weeks and this will be used to increase round length to 20 days.

8. PASTURE GROWTH this week was 73kg DM/ha, lower than the 84kg DM/ha grown last week.
9. Average PASTURE COVER decreased to 2223kg DM/ha, from 2,263 kg DM/ha.
10. Stocking rate is currently 4.34 cows per ha because paddock S9 was sprayed out, cultivated and sown with Bealey Ryegrass and two white clovers on the 4th of December.
11. The pivot watered section of S9 is now 100 – 125 mm high and is firm to finger pulling. This area of the paddock will be grazed by calves later in the week. The remainder of the paddock which is watered by sprinklers is at least 2 weeks behind the pivot watered area.
12. We are using the soil moisture deficit information from our 4 Aquaflex sites around the farm to schedule our irrigation. Our aim in the late spring and summer, is to keep soil moisture levels just far enough below Field Capacity to allow for almost all rain events without exceeding Field Capacity and having leaching occur. This allows us to survive extended periods of evapo-transpiration rates that are higher than we can replace by irrigation on a daily basis and also gives us some time if a breakdown occurs. We make our energy and water savings by stopping irrigating earlier in the autumn and allowing soil moisture deficits to approach Stress Point just before the autumn rains.
13. This week we had 6 days of irrigation and 3mm of rain. The soil moisture graph for S6 shows the topsoil rising just above the field capacity line last Thursday with the addition of 2mm of rain. The system was turned off on the Friday. Irrigation is continuing and soil moisture has declined since then.



14. Cows will continue to be offered enough grass to achieve their potential intake and will be moved on when grazing residual targets are achieved.

15. We had no new cases of mastitis this week. SCC has been between 129,000 - 159,000.
16. There were 8 new lame cows this week, we have 21 in total. These cows are being milked once per day while they recover from the injury.
17. 655 cows are milking into the silo. Cows are producing 1.48 kg MS/cow/day (last week 1.6) and 6.09 kg MS/ha/day (6.6 last week).
18. Continuing with Magnesium supplementation. The milking herd receives 40g of Mag Chloride/cow through the dosatron.
19. This is the third week we have not applied fertiliser Nitrogen. We do not expect to use any fertiliser N until February because in previous seasons the farm has grown enough pasture without using N.

Next farm walk will be on **Tuesday, 12th January 2010, at 9.00 am.**

Farmers or their managers and staff are always welcome to walk with us. Please call to notify us of your intention and bring your plate meter. Phone SIDDC – 03 325 3629

Management Group

Peter Hancox (Farm Manager), George Reveley (for SIDDC), Virginia Serra (DairyNZ).