

Lincoln University Dairy Farm - Farm Walk notes

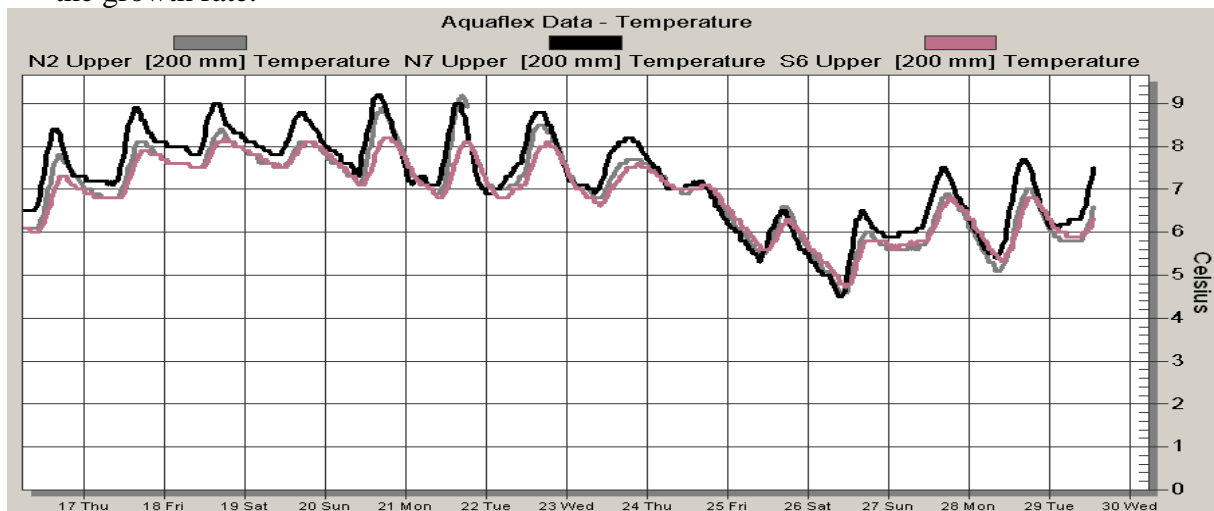
Tuesday, 29th July 2008

Critical issues for the short term

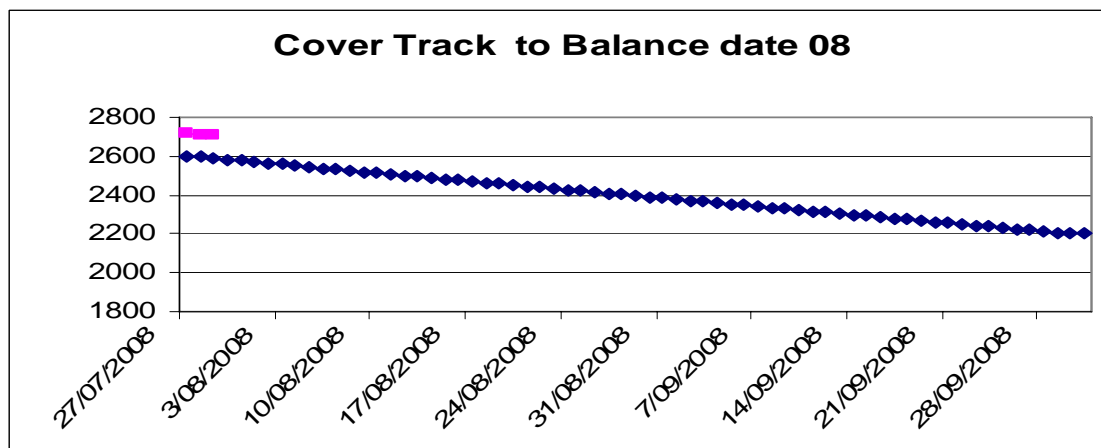
1. Dust pastures with Caus Mag.
2. Minimise pugging through on/off grazing.
3. Regularly teat-spray springers and closely observe for mastitis.

Summary of Key Factors affecting Grazing Management & Animal Performance

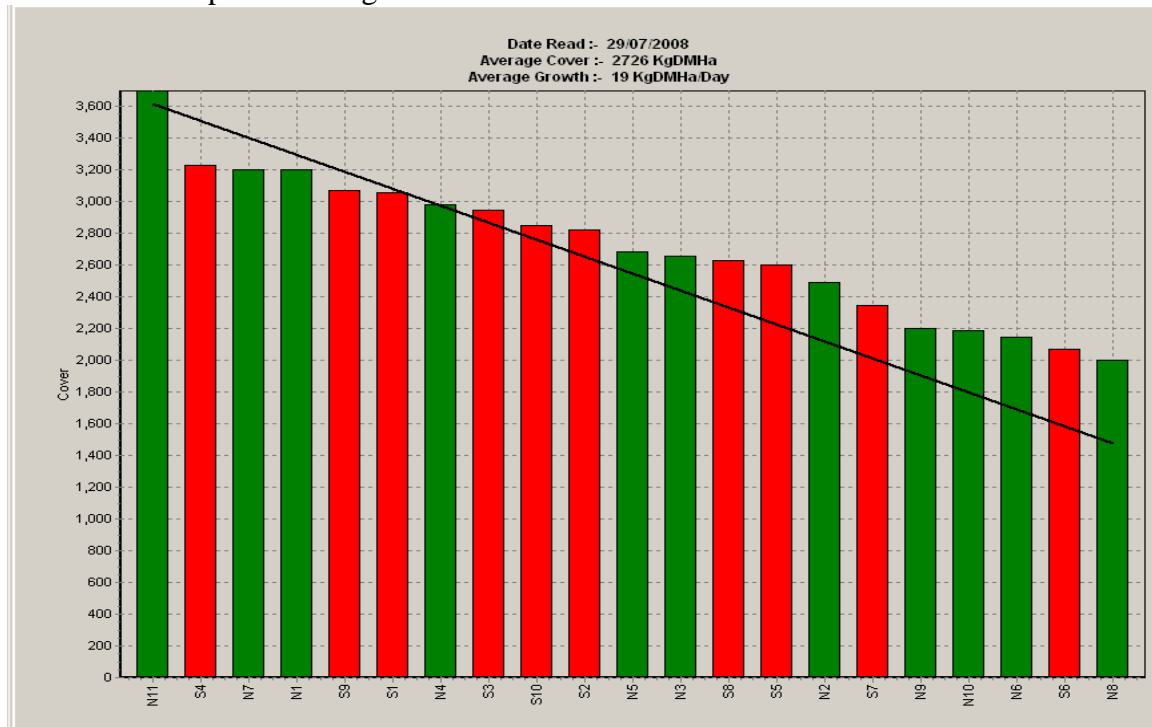
4. SOIL TEMP at 9am has been lower at an average of 6.0 °C for the week this is reflected in the growth rate.



5. Rainfall for the month is 120mm. This is higher than average. Any rain currently is enough to make the soil too wet to allow grazing cows all day. Three to four days with no rain is usually enough to allow cows to be on pasture again for 24hrs.
6. PASTURE GROWTH was 19kg DM/ha (last week 27 on the milking platform).
7. Average pasture cover has dropped slightly from 2725 kg DM/ha to 2709 kg DM/ha. This is the highest cover we have ever had at this time of the year.



8. This weeks pasture wedge



9. The target line is at the average cover for our budgets for today which is for 2588 kg DM/ha.
10. We have a bulge of paddocks in the lower half of the graph which are above the target line and if left could result in these paddocks being too long when they come to be grazed. Some of this is because of three paddocks that are currently part grazed by various springing and calved mobs. Over the next few weeks this shape of the wedge should steadily even out. Currently our lowest paddocks on the wedge have covers higher than expected because there had been no animals on the farm leading up to calving.
11. The runoffs now have 350 cows on them and all remaining stock out at grazing will be coming back to the runoffs by the end of tomorrow. This is up to two weeks earlier than originally budgeted for. Pasture cover is decreasing rapidly as planned.
12. Calving has commenced with a total of 62 heifers and cows calved. Sixty of these are the synchronised R2 heifers. Total R2's is 160.
13. The calved cows are being milking once a day and we will continue doing that at least until we are ready to supply to the factory which will be in 5 – 6 days time. The decision will also be tempered by how much time cows can be on pasture.
14. The very wet soils are allowing us to graze milkers and springing cows 7- 9 hrs. The springers are on the cow yard overnight. The milkers are on the yard during the day.

The next WEEKLY farm walk is on Tuesday **5th August 2008 at 9.00am.**

Farmers or their managers are always welcome to walk with us. Please call to notify us of your intention and bring your plate meter.

Management Group

Peter Hancox (Farm Manager), George Reveley (for SIDDC), and Adrian van Bysterveldt (DairyNZ).

Lincoln University Dairy Farm - Farm Walk notes

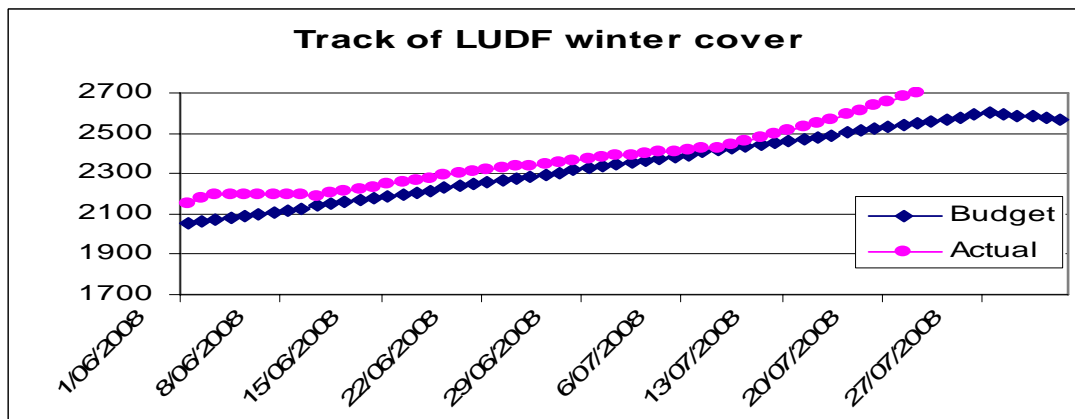
Tuesday 22nd July 2008

Critical issues for the short term

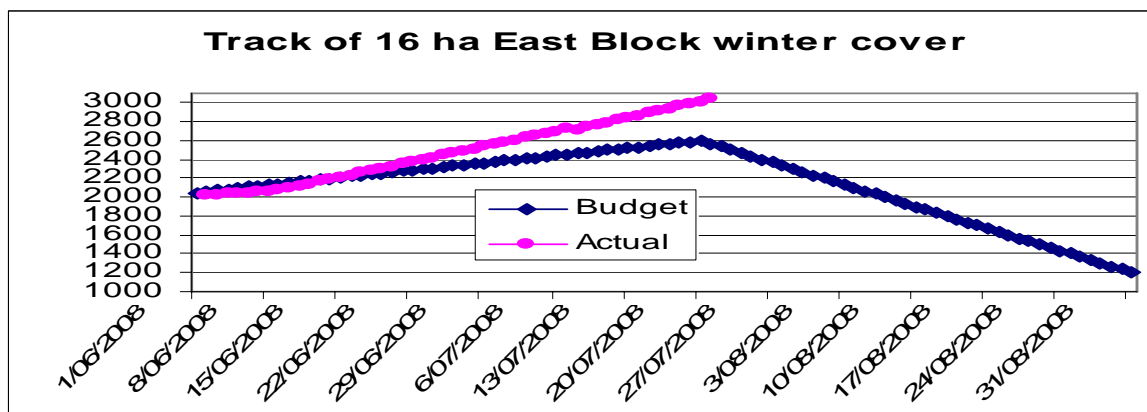
1. Dust pastures with Caus Mag.
2. Absolutely prevent pugging through on/off grazing.
3. Regularly teat-spray springers and closely observe for mastitis.

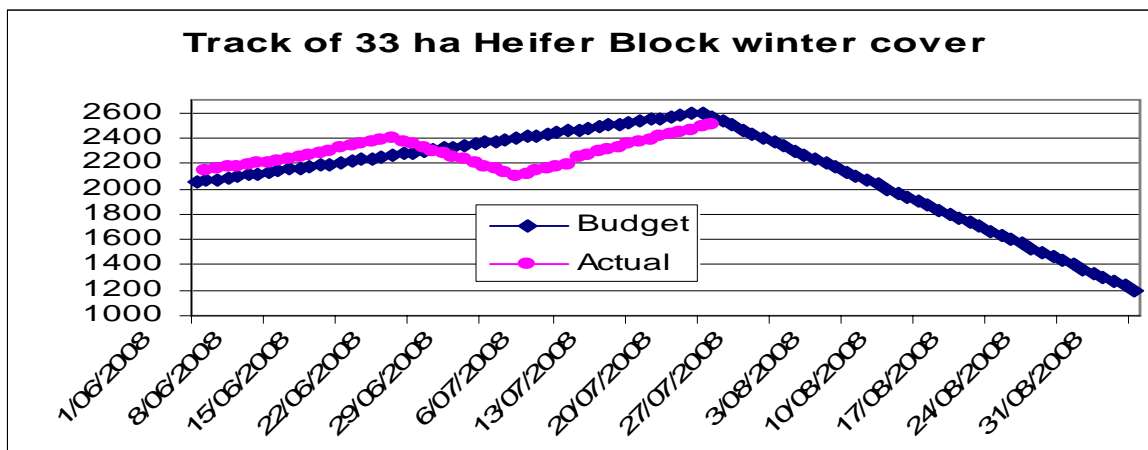
Summary of Key Factors affecting Grazing Management & Animal Performance

4. SOIL TEMP at 9am has been higher at an average of 7.5 °C for the week.
5. PASTURE GROWTH was 27 kg DM/ha (last week 16 on the milking platform).
6. Average pasture cover has risen from 2548 kg DM/ha to 2703 kg DM/ha. This is the highest cover we have ever had at this time of the year.



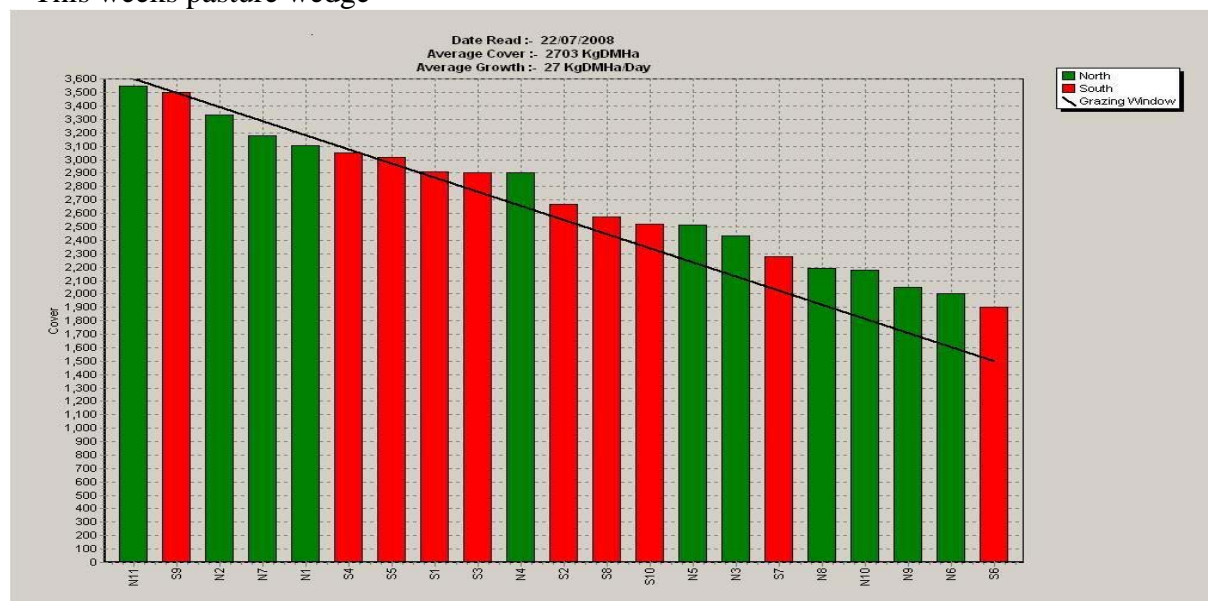
7. The covers on our runoffs have also lifted with the 18ha East block having an average of over 3000 kg Dm/ha (last week 2800) and the 33ha Heifer block having a cover of about 2500 kg Dm/ha (last week 2400 kg).
8. All the stock will be coming back to the runoffs by the end of this week. This is up to two weeks earlier than originally budgeted for.
9. Runoff Covers





10.

This weeks pasture wedge



11. The target line is at the average cover for our budgets for today which is for 2551 kg DM/ha.

12. We are now happier with the shape of the wedge because we now have a good group of long paddocks. We still have a bulge of paddocks in the lower half of the graph which are above the target line and if left could result in these paddocks being too long when they come to be grazed.

13. This will probably mean that we will graze one or two paddocks in the middle of the feed wedge on wet days which should remove this problem.

14. Calving has commenced with 20 of the synchronised R2 heifers already calved

The next WEEKLY farm walk is on Tuesday **29th July 2008 at 9.00am.**

Farmers or their managers are always welcome to walk with us. Please call to notify us of your intention and bring your plate meter.

Management Group - Peter Hancox (Farm Manager), George Reveley (for SIDDC), and Adrian van Bysterveldt DairyNZ).

Lincoln University Dairy Farm - Farm Walk notes

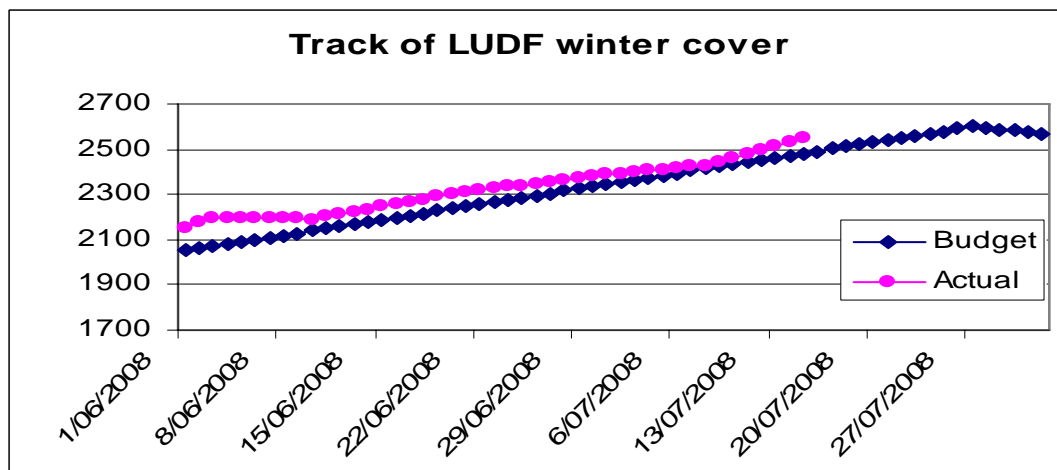
Tuesday, 15th July 2008

Critical issues for the short term

1. **Monitor break sizes and cow intakes for cows grazing off farm that you are not in control of on a daily basis.**
2. **Dust pastures with Caus Mag.**

Summary of Key Factors affecting Grazing Management & Animal Performance

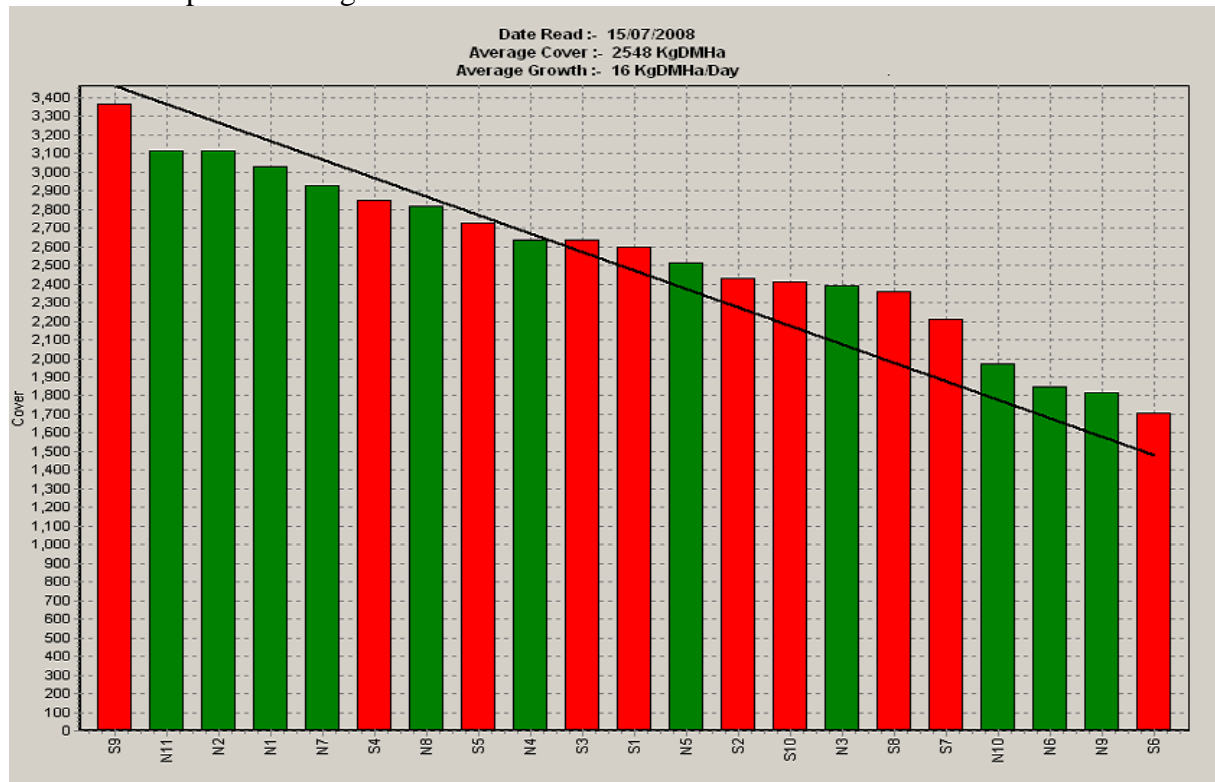
3. SOIL TEMP at 9am has varied between 3 and 8 °C, with the average about 6 °C.
4. PASTURE GROWTH was 16 kg DM/ha (last week 8 on the milking platform).
5. Average pasture cover has risen from 2424 kg DM/ha to 2548 kg DM/ha.



6. The 126 thinnest cows which were going to be grazing on the milking platform are still off the farm, grazing high quality grass and putting on weight. This has resulted in the pasture cover on the farm lifting by more than in predicted in our feed budgets and we are now within a week of achieving our revised higher target cover.
7. The covers on our runoffs have also lifted with the 18ha East block having an average of over 2800 and the 33ha Heifer block having a cover of about 2400 kg DM/ha. Over the two runoffs we are 2.1t of feed above target. We now have the heifers back from grazing so we are still only just going to make our targeted total amount of pasture on the runoff blocks.
8. Once again we have just enough feed to make things work. We are anticipating that some of the cows will be coming home from their winter grazing earlier than planned because of the lower feed supplies there and so we will still need a few weeks of favourable weather and above average growth to be able to meet all our cows needs without feeding silage.

9.

This weeks pasture wedge



10. The target line is at the average cover for our budgets for today which is for 2482 kg DM/ha.

11. The target line shows us that while average cover is fine, we are missing some long paddocks at the top of the wedge. The positive side of this is that all the paddocks are still in a growing state but the down sides are that we do not have a few paddocks with high covers which make it easy to keep a very long round at the start of the season by just using grass. The second down side is that we also have a bulge of paddocks in the lower half of the graph which are above the target line and if left could result in these paddocks being too long when they come to be grazed.

12. This will probably mean that we will graze one or two paddocks in the middle of the feed wedge first and at the same time feed out silage while we are not too busy.

The next WEEKLY farm walk is on Tuesday, **22nd July 2008 at 9.00am.**

Farmers or their managers are always welcome to walk with us. Please call to notify us of your intention and bring your plate meter.

Management Group

Peter Hancox (Farm Manager), George Reveley (for SIDDC), and Adrian van Bysterveldt (DairyNZ).

Lincoln University Dairy Farm - Farm Walk notes

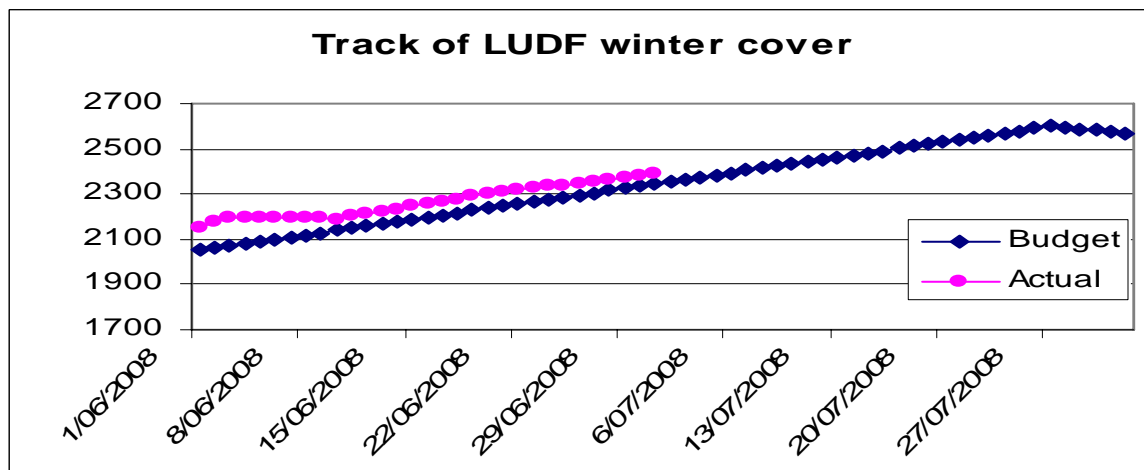
Tuesday, 8th July 2008

Critical issues for the short term

1. **Monitor condition score gain and draft out cows not making fast enough progress, particularly those mobs on Kale.**
2. **Monitor break sizes and cow intakes for cows grazing off farm i.e. that you are not in control of on a daily basis.**
3. **Look out for and treat any cow with mastitis.**

Summary of Key Factors affecting Grazing Management & Animal Performance

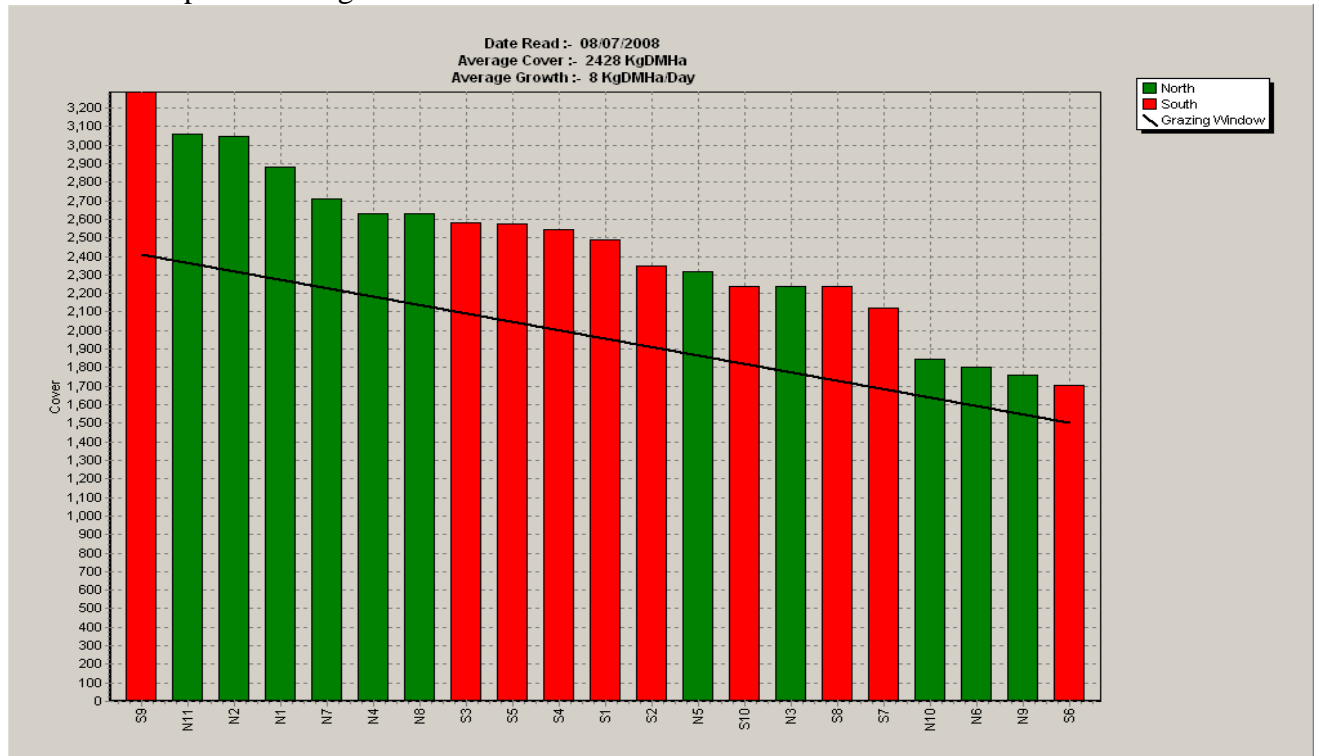
4. SOIL TEMP at 9am has varied between 2.5 and 8 °C, with the average about 4 °C.
5. PASTURE GROWTH was 8 kg DM/ha (last week 10 on the milking platform).
6. Average pasture cover has risen from 2389 kg DM/ha to 2424 kg DM/ha.



7. The target average cover for the planned start of calving has been lifted from 2500 to 2600 because more cows are going to be coming home earlier from winter grazing than earlier planned. We needed to do this to make the feed budget work.
8. Additional grazing has been sourced for the 126 thinnest cows on the milking platform. Since the last farm walk we have had the 126 thinnest cows on the milking platform for only three days, if these had remained on farm we would not have had any gain in farm cover. To keep these cows we would have required to grow 10kg DM a day over the whole platform.
9. All mobs are back fenced and when there is rain forecast they are also on/off grazed. This means between 4 and 8 hours on the paddock and up to 20 hours in the dairy yard. Ground conditions are currently very soft on the South Block after the 65mm of rain over the last few days.

10.

This weeks pasture wedge



11. The target line is at the average cover for our budgets for today and the wedge shows that we have achieved this and the wedge is getting steeper in shape.

The next WEEKLY farm walk is on Tuesday, **15th July 2008 at 9.00am.**

Farmers or their managers are always welcome to walk with us. Please call to notify us of your intention and bring your plate meter.

Management Group

Peter Hancox (Farm Manager), George Reveley (for SIDDC), and Adrian van Bysterveldt (DairyNZ).

Lincoln University Dairy Farm - Farm Walk notes

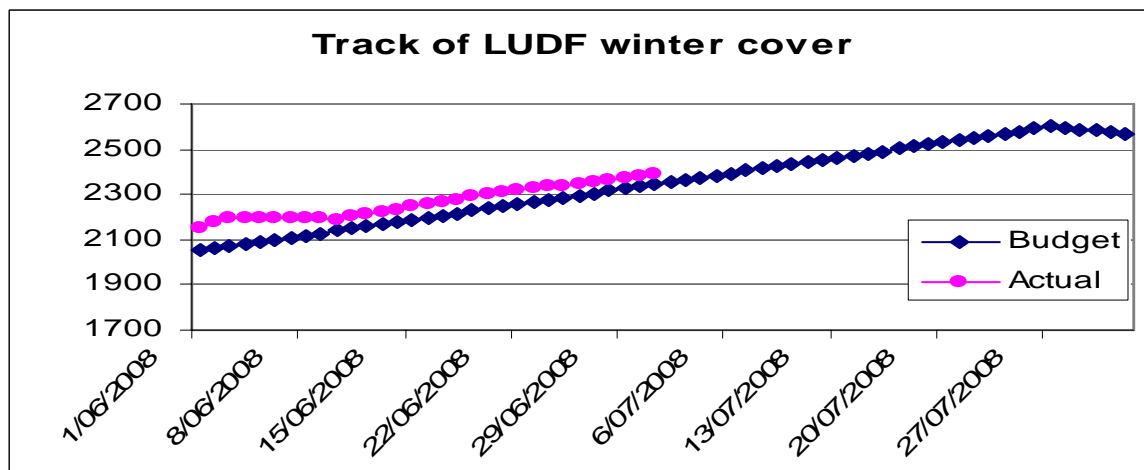
Tuesday, 1st July 2008

Critical issues for the short term

1. **Monitor condition score gain and draft out cows not making fast enough progress particularly those mobs on Kale.**
2. **Look out for and treat any cow with mastitis.**

Summary of Key Factors affecting Grazing Management & Animal Performance

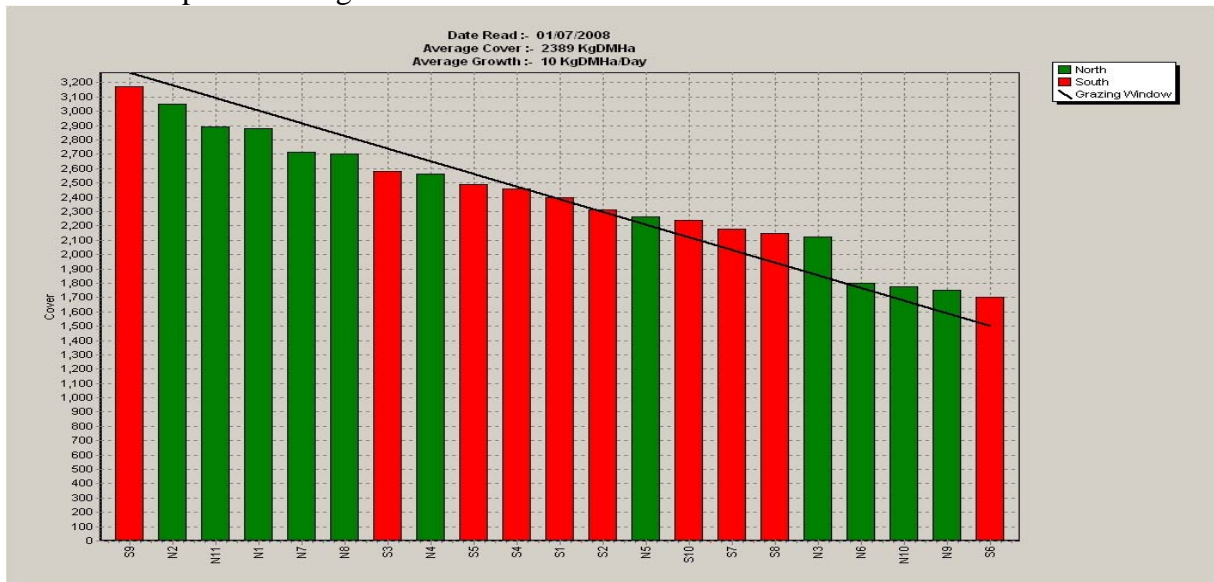
3. SOIL TEMP at 9am has varied between 2 and 7 °C, with the average about 5 °C.
4. PASTURE GROWTH was 10 kg DM/ha (last week 19 on the milking platform).
5. Average pasture cover has risen from 2302 kg DM/ha to 2389 kg DM/ha.



6. The target average cover for the planned start of calving has been lifted from 2500 to 2600 because more cows are going to be coming home earlier from winter grazing than earlier planned. We needed to do this to make the feed budget work.
7. The need to lift the target average farm cover on the platform to 2600 has also put on more pressure to find some additional grazing for the mob on the farm. Since the last farm walk we have had the 126 thinnest cows on the milking platform for only two days, otherwise they were eating a paddock of overly long grass on the heifer runoff. This paddock was going yellow in the base and if left for several more weeks the re-growth would have been slow. The mob was back fenced and the re-growth on the first breaks in the paddock is very noticeable.
8. All mobs are back fenced and when there is rain forecast they are also on/off grazed. This means between 4 and 8 hours on the paddock and up to 20 hours in the dairy yard. Ground conditions are currently very soft on the south block after the 65mm of rain over the last few days.

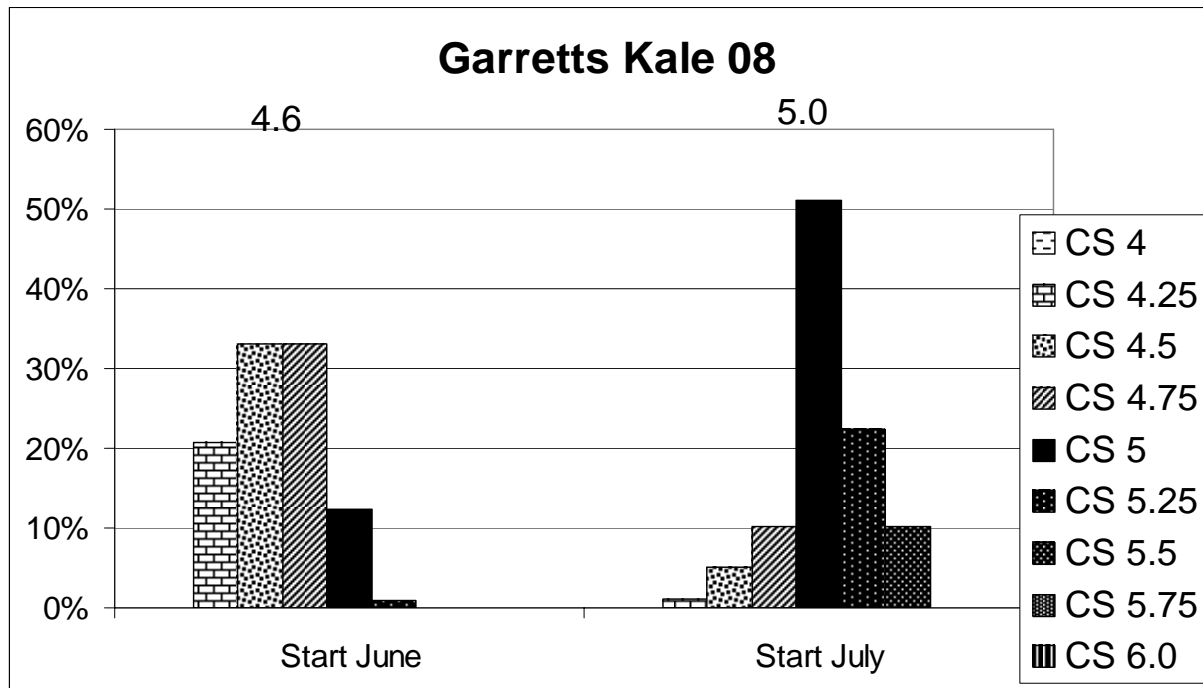
9.

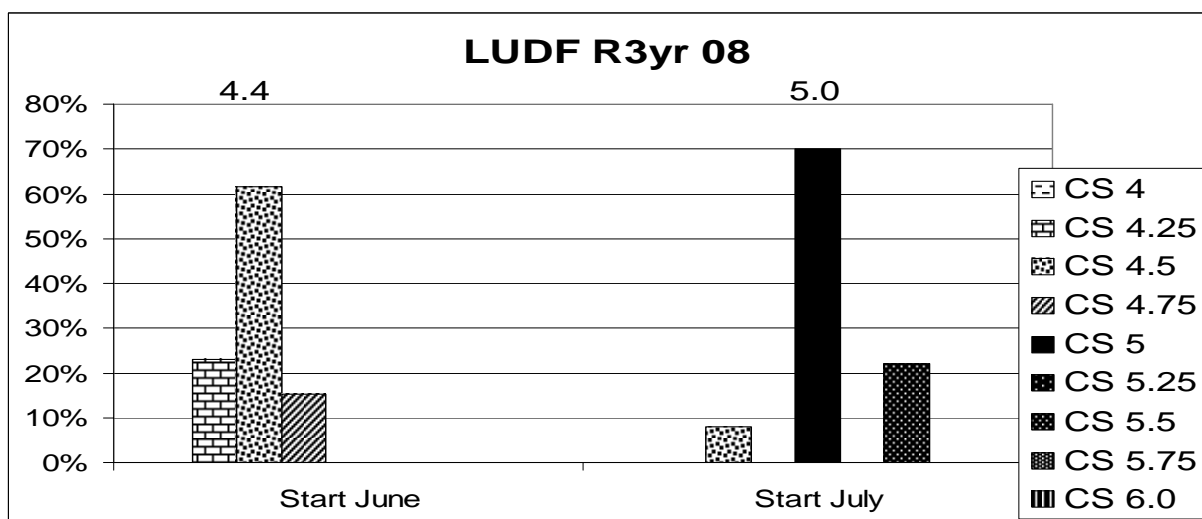
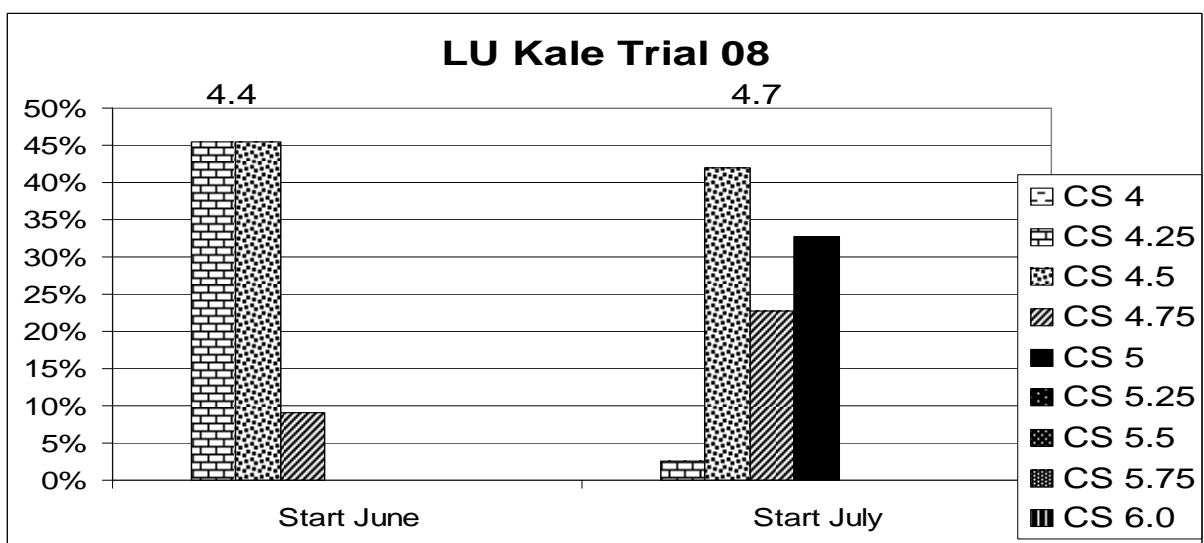
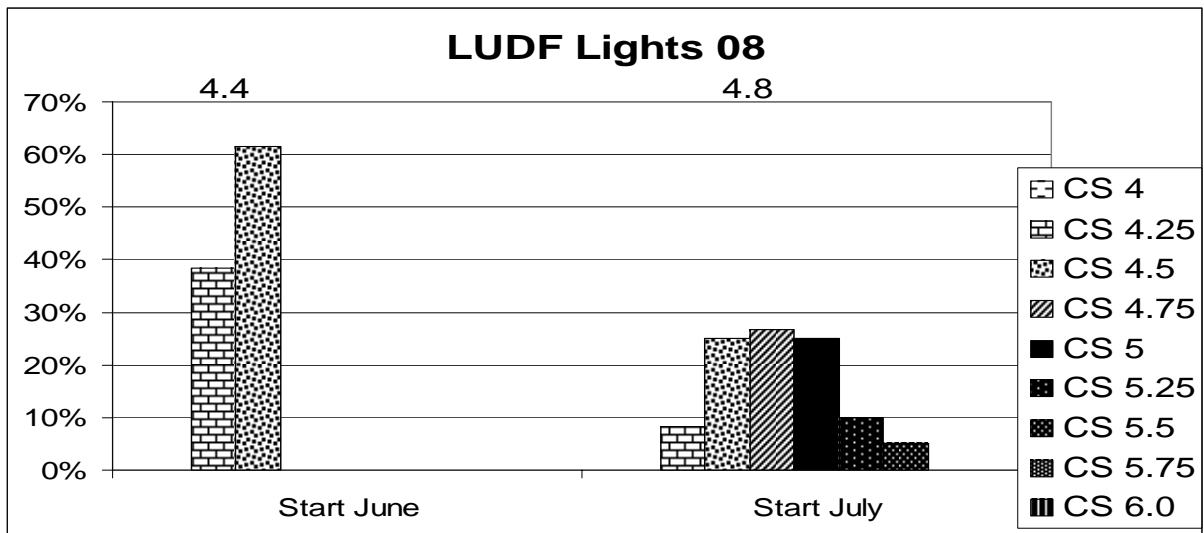
This weeks pasture wedge



10. The target line is at the average cover for our budgets for today and the wedge shows that we have achieved this and the wedge is getting steeper in shape.

11. Cow condition score progress is as follows





The next WEEKLY farm walk is on Tuesday 8th July 2008 at 9.00am.
Farmers or their managers are always welcome to walk with us. Please call to notify us of your intention and bring your plate meter.

Management Group

Peter Hancox (Farm Manager), George Reveley (for SIDDC), and Adrian van Bysterveldt DairyNZ).