

Lincoln University Dairy Farm - Farm Walk notes

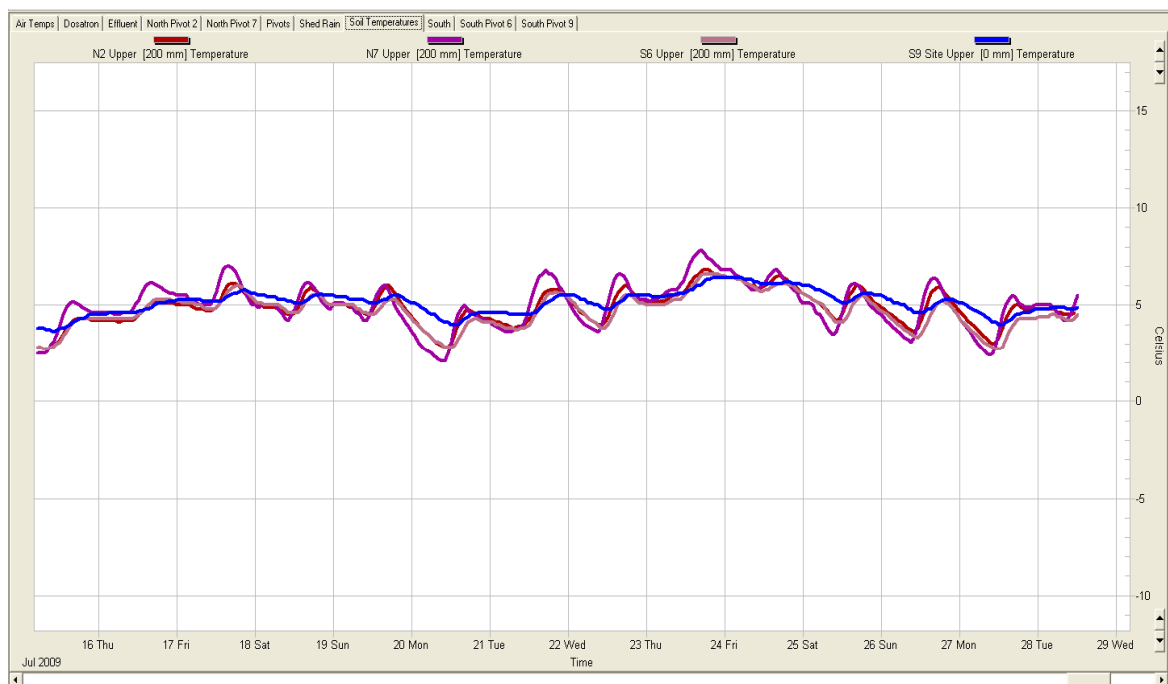
Tuesday, 28th July 2009

Critical issues for the short term

1. **Minimize pugging through on/off grazing**
2. **Continue Mg supplementation (dust paddocks and water trough treatments)**
3. **Regularly teat-spray springers and closely observe for mastitis**
4. **Stick to the round length established by the Spring plan**

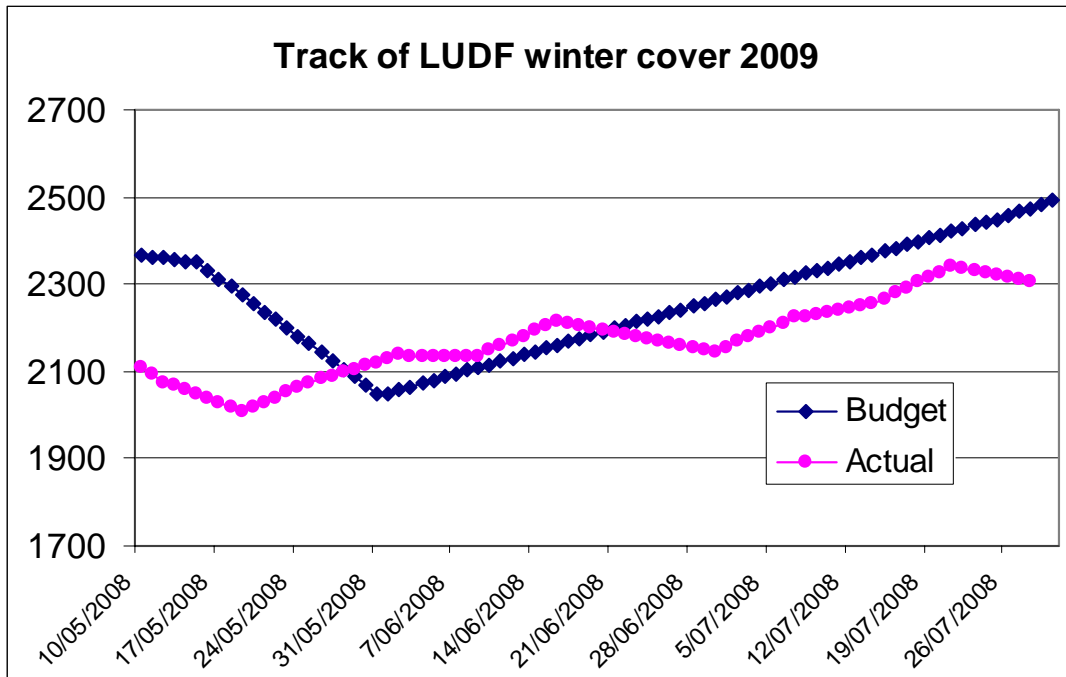
Summary of Key Factors affecting Grazing Management & Animal Performance

5. Soil Temperatures at 9.00 am have again been around 5°C but we had a bit more variability than in previous weeks.

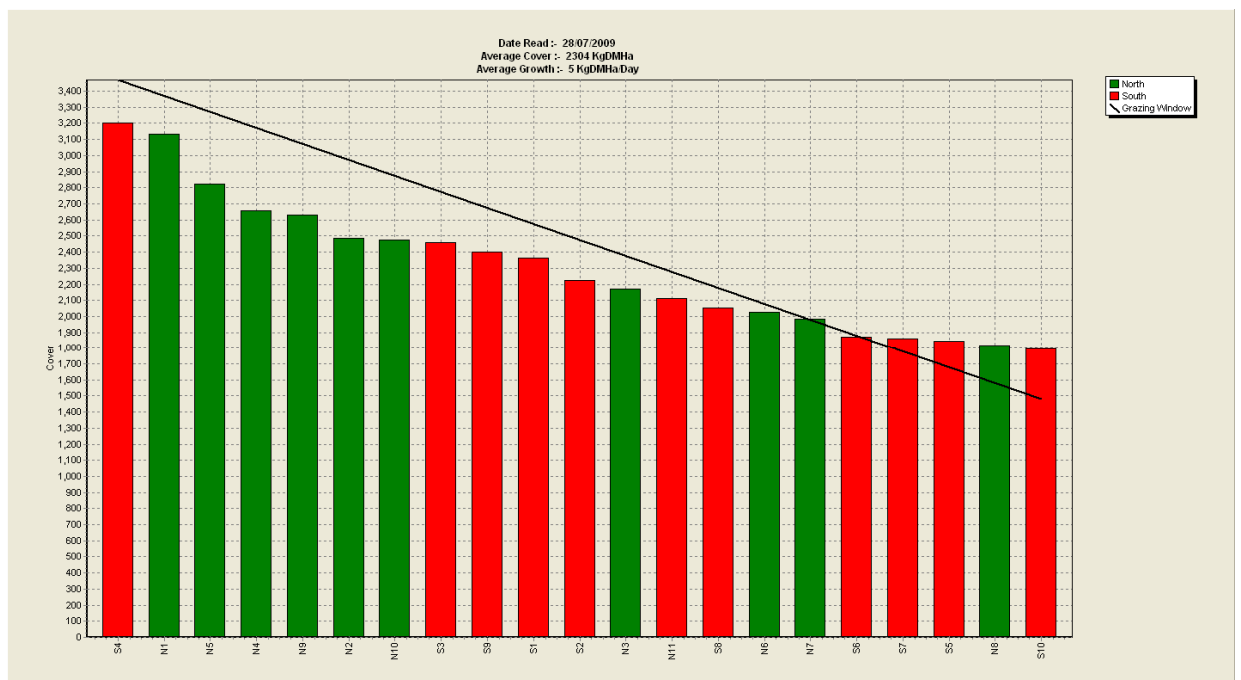


21. PASTURE GROWTH was 5 kg DM/ha below the 16 kg DM/ha we measured last week. Considering the soil temperatures we were not expecting any higher growth this week. Conditions at the time of the farm walks have not been ideal (wet and frosty for most of the winter) giving us some growth rates that do not agree with the soil temperatures we were measuring (see comments on last week Farm Walk notes) effecting decisions for the week.
22. The average pasture cover dropped to 2304 kg DM/ha, from 2,340 kg DM/ha. Given the lower than expected grass growth rates, we have not achieved our target cover of 2450 kg DM/ha for the 25th of July as can be seen in the graph below. However, because we knew this was happening we secured enough winter feed off the milking platform to compensate for the lower cover. This situation is, of course, costing us money (about \$5,900) but protecting cover on the milking platform is the key priority at this time of the year. In addition, we can not see that the deficit could be covered by higher than normal growth rates.

23. Track of winter cover



24. The Feed Wedge Today



The target line in the wedge reflects the pre-grazing target of 3,470 kg DM/ha and a post grazing of 1480 kg DM/ha which gives us the target average pasture cover of 2450 kg DM/ha. Two paddocks that are half grazed are affecting the bottom of the wedge.

25. Because of very good ground conditions we have been able to get to residual (7 clicks), and in one paddock heifers have eaten below this level at about 1300 kg DM/ha but only in a very small proportion of the paddocks (about 1.5 ha). We always try to avoid doing this since it delays re-growth.
26. The key priority for us is to protect the average cover on the farm and we will do it by following the Spring Rotation Planner and making sure that we do not speed up the round.
27. Last week we used 3 ha which is below the area we had allocated in the Spring rotation.
28. We have 93 cows calved (88 heifers and 5 cows). We had an average of 86 cows on the farm. Calving is going very well, we have helped only one cow to calve and it was a minor problem.
29. All cows grazed off farm are on target to achieve their Condition Score Targets at Calving. Our Efforts have paid off!!!
30. We have started Mag Oxide this week dusting in front of the cows.
31. All heifers have calved without any problems and we have not seen any problems with mastitis so far. All cows calved more than four days will be rapid mastitis tested before their milk is put in the silo for collection. Our first pickup will be this Friday
32. The plan is to milk all cows once a day for the first 3 weeks to reduce the amount of body weight they lose after calving, and also to make things easier on farm for staff. We will assess for how long we milk once a day depending on pasture availability and ground conditions.

Next farm walk will be on Tuesday, 4th August 2009.

Farmers or their managers and staff are always welcome to walk with us. Please call to notify us of your intention and bring your plate meter. Phone SIDDC – 03 325 3629

Management Group

Peter Hancox (Farm Manager), Virginia Serra (DairyNZ), George Reveley (for SIDDC).

Lincoln University Dairy Farm - Farm Walk notes

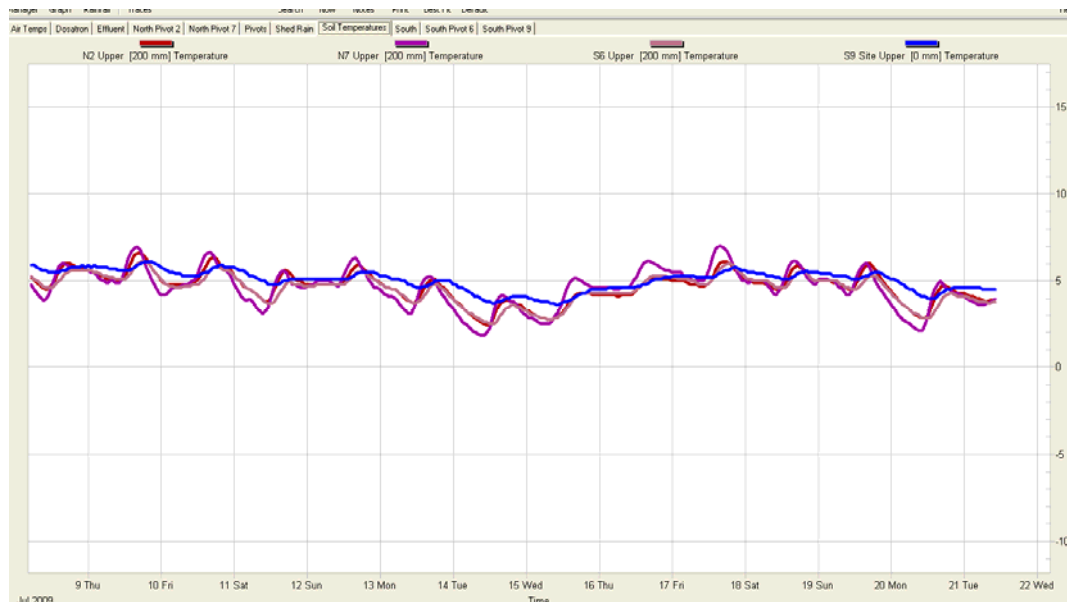
Tuesday, 21st July 2009

Critical issues for the short term

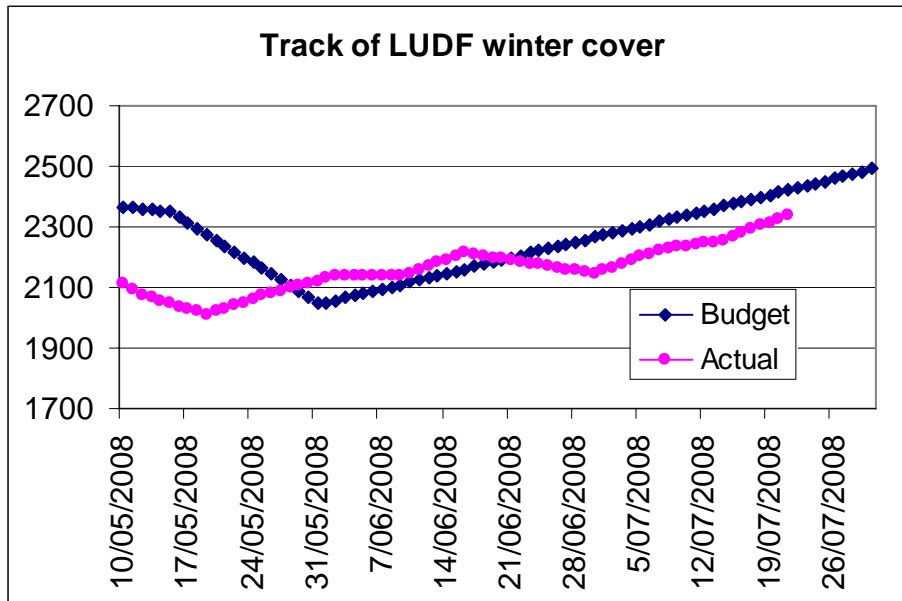
1. **Minimize pugging through on/off grazing**
2. **Start Mg supplementation (dust paddocks and water troughs treatments)**
3. **Closely observe dry cows for any sign of swollen quarters and treat if found.**
4. **Stick to the round length established by the spring plan**

Summary of Key Factors affecting Grazing Management & Animal Performance

5. Soil Temperatures at 9.00 am have been around 5°C most of the week. We had 3 big frosts this week and a couple of foggy days. Last year temperatures were a bit higher at 7.5°C at the same time of the year.

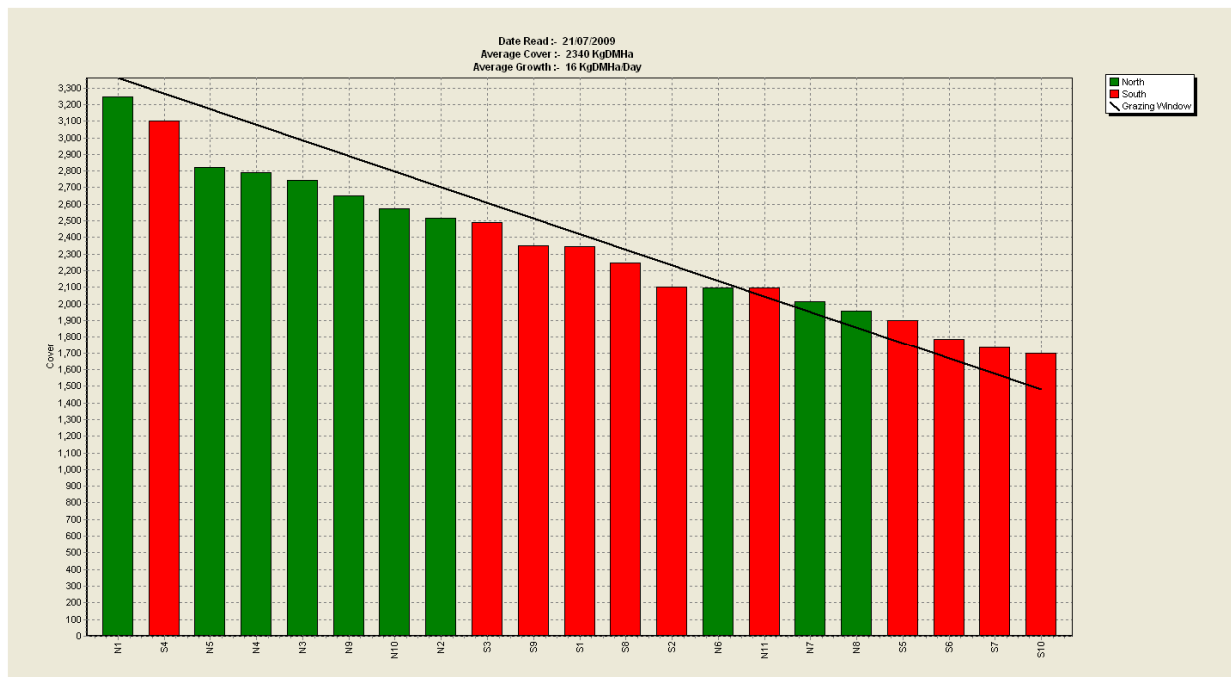


6. We had a bit of rain last Wednesday, paddocks are quite firm and dry on the North Block but remain very wet on the South Block.
7. PASTURE GROWTH was 16 kg DM/ha, 6 kg DM/ha more than last week. The higher growth rate measured this week, despite the low soil temperatures, can be explained by a more accurate reading with the plate meter because today is warm and dry.
8. The average pasture cover is 2,340 kg DM/ha. The target line (the blue line on the graph below) to achieve our target of 2,450 pasture cover on the 25th July shows that APC should be at 2,420 kg DM/ha today. (The pink line is the actual cover we have been measuring at the farm walks).



9. Pasture cover is below target by about 80 kg DM/ha (12.7 t DM). We are confident that the overall feed availability is adequate with appropriate off farm feed available for cows not yet calved.

10. The Feed Wedge Today



The target line in the wedge below reflects the pre-grazing target of 3,360 kg DM/ha and a post grazing of 1480 kg DM/ha which gives us the average pasture cover that we want for the end of the week of 2420 kg DM/ha.

11. Last week we used 2.7 ha which is below the 3.6 ha we had allocated in the spring rotation. The 76 first calvers on farm were moved on when they reached 7 click residuals, we assume they are fed adequately but did not eat quite as much as the feed plan had allocated them.

12. All cows grazed off farm are on target to achieve their Condition Score Targets at Calving. Our Efforts have paid off!!!
13. We will begin to dust with Mag Oxide this week on the 25th July (2 weeks before the calving date for these cows.) We expect to have no more than 3 cows with symptoms of Milk Fever per 100 calved.
14. Last week 76 first calving heifers were brought to the milking platform. The rest, 110 heifers, are grazing on leased land near the platform.
15. Last week 26 heifers calved without any problems and we have not seen any problems with mastitis so far.
16. The plan is to milk all cows once a day for the first 3 week to reduce the amount of body weight they lose after calving and also to make things easier on farm for staff. We will assess for how long we milk once a day depending on pasture availability and ground conditions.

Next farm walk will be on Tuesday, 28th July 2009.

Farmers or their managers and staff are always welcome to walk with us. Please call to notify us of your intention and bring your plate meter. Phone SIDDC – 03 325 3629

Management Group

Peter Hancox (Farm Manager), Virginia Serra (DairyNZ), George Reveley (for SIDDC).

Lincoln University Dairy Farm - Farm Walk notes

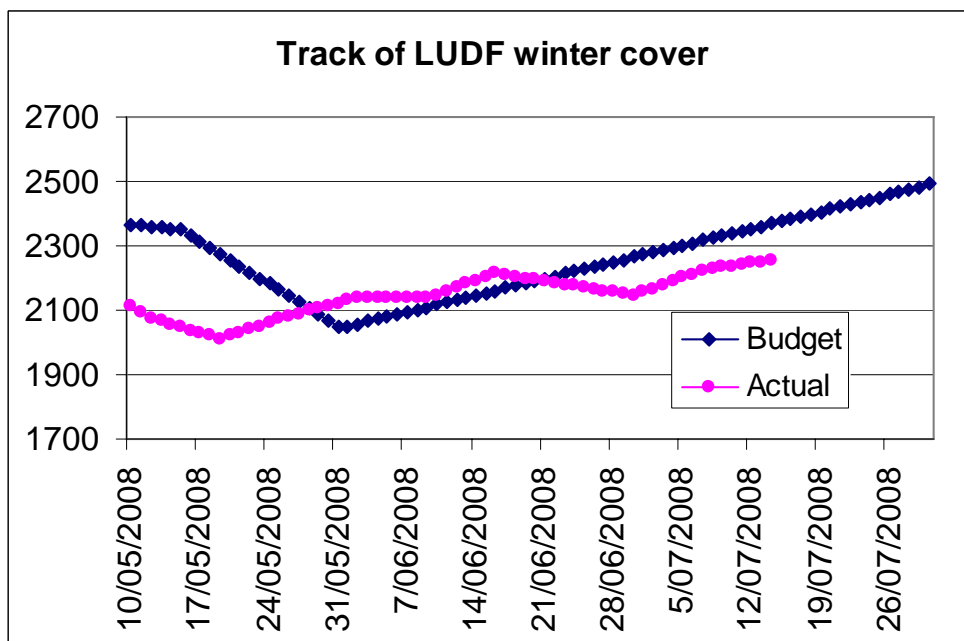
Tuesday, 14th July 2009

Critical issues for the short term

1. **Closely observe dry cows for any sign of swollen quarters and treat if found.**
2. **Monitor Cow Condition and act if necessary**
3. **Monitor APC on the milking platform compared to Targets**

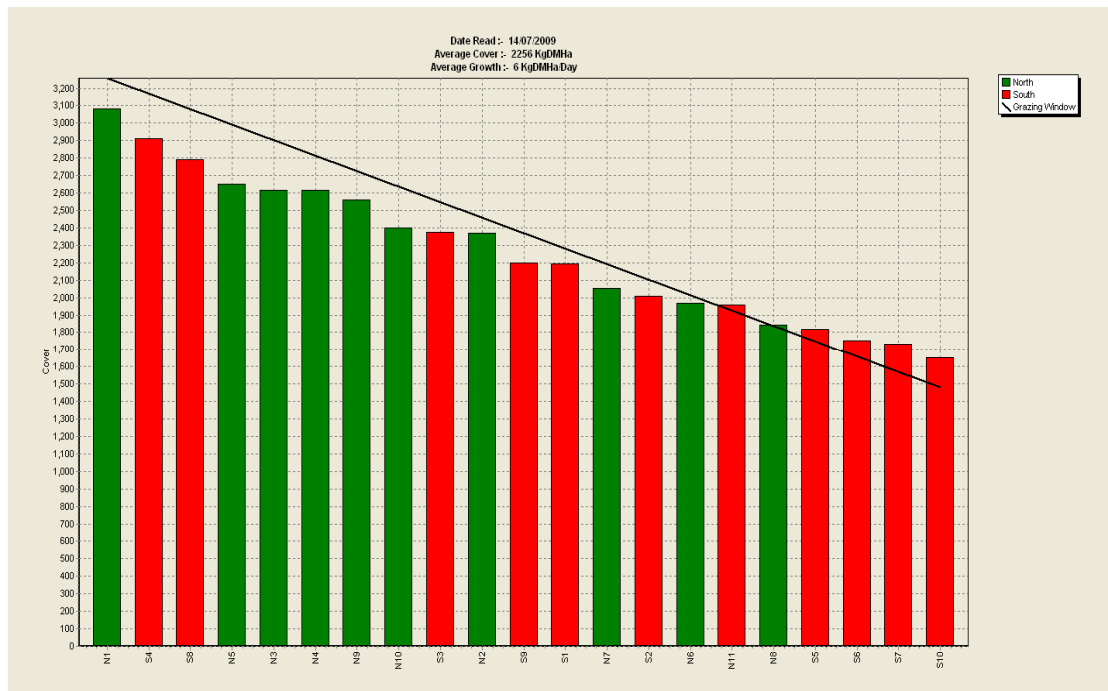
Summary of Key Factors affecting Grazing Management & Animal Performance

4. Soil Temperatures at 9.00 am has varied between 3 and 6°C with an average of about 5°C. We had 5 frosts this week.
5. We had 15 mm of rain last week on Tuesday and on Sunday and paddocks are still quite wet, especially on the South Block.
6. PASTURE GROWTH was 6 kg DM/ha, lower than 12 kg DM/ha grown last week.
7. The average pasture cover at the moment is 2256 kg DM/ha. The target line (the blue line on the graph below) to achieve our target of 2,450 pasture cover on the 25th July, shows that APC should be at 2369 kg DM/ha today. (The pink line is the actual cover we have been measuring at the farm walks).



8. Average pasture cover increased to 2256 kg DM/ha from 2223 kg DM/ha last weeks and remains below the target. We had hoped that removing the approximately 100 wintering cows from the platform would enable pasture cover to increase and meet the target.
9. Pasture cover is below target by about 110 kg DM/ha (17.5 t DM) but we are confident that the feed situation is under control because we have enough off farm grazing organised to cope with this.

10. The Feed Wedge Today



The target line in the wedge reflects the pre-grazing target of 3258 kg DM/ha and a post grazing of 1480 kg DM./ha which gives us the average pasture cover that we want for the end of the week of 2369 kg DM/ha.

11. The herd of 213 (late August and September calving) cows that we trucked to Hororata are in at average 4.8 body condition score. (17 lighter cows that were not gaining weight on Kale were brought back to pasture two weeks ago). Our plan is to leave the 213 cows at Hororata until late August but we will bring cows home earlier if they are showing signs of springing.
12. The 150 cows wintering on kale and grass at Springston are doing very well and have been at calving condition for the last 2 weeks. We have tightened the feed availability to these cows to maintain rather than continue to achieve weight gain.
13. Another 50 cows are on pasture at Springston. These were in light condition early in the winter and have achieved the condition gain needed.
14. We will begin to dust with Mag Oxide in the mixed age cows 25th July (2 weeks before the calving date for these cows.) We expect to have no more than 3 cows with symptoms of Milk Fever per 100 calved.
15. The 187 first calving heifers are now on leased land near the platform. The 90 of these that will calve next week will be brought back to the platform during the week.
16. Two of the first calvers have calved already and we expect 20 – 30 to calve during the week.
17. Management team visited all the wintering groups again today as we have each two weeks during the winter. We are very happy with the condition gain overall.

Next farm walk will be on Tuesday, 21st July 2009.

Farmers or their managers and staff are always welcome to walk with us. Please call to notify us of your intention and bring your plate meter. Phone SIDDC – 03 325 3629

Management Group

Peter Hancox (Farm Manager), Virginia Serra (DairyNZ), George Reveley (for SIDDC).

Lincoln University Dairy Farm - Farm Walk notes

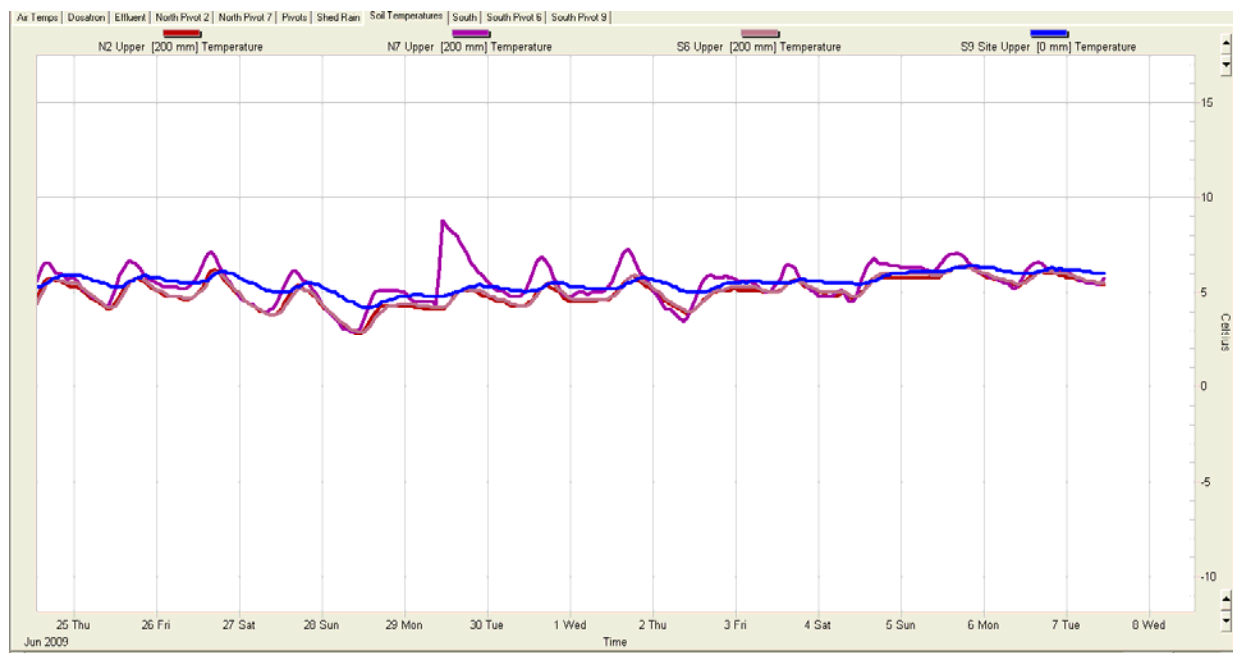
Tuesday, 7th July 2009

Critical issues for the short term

1. **Closely observe dry cows for any sign of swollen quarters and treat if found.**
2. **Monitor Cow Condition and act if necessary.**
3. **Monitor APC on the milking platform compared to targets.**

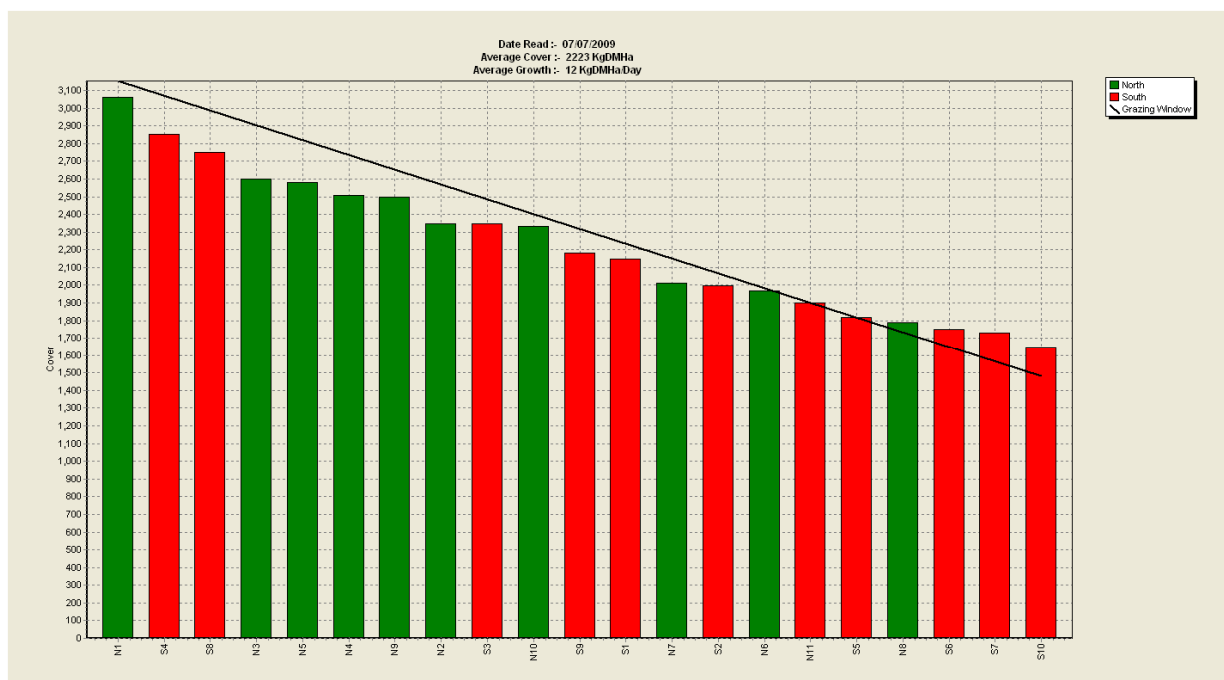
Summary of Key Factors affecting Grazing Management & Animal Performance

4. Soil Temperatures at 9.00 am have been similar to last week at around 5°C for most of the week, but reached 6-7°C the last two days. We didn't have any frosts but it was overcast for most of the week.



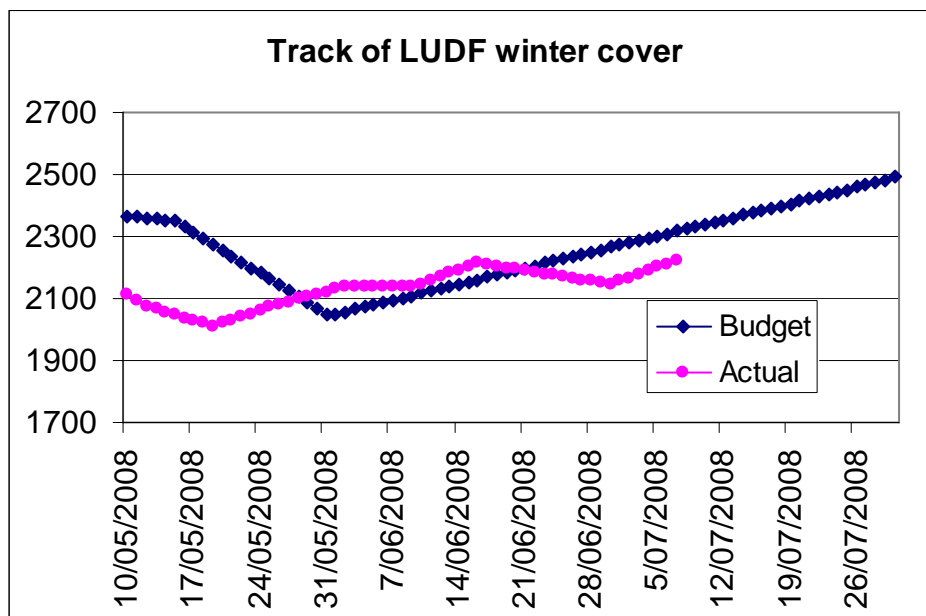
5. We had 31 mm of rain last week (10 of them last night) and paddocks are quite wet, especially on the South Block.
6. PASTURE GROWTH was 12 kg DM/ha, up from 6 kg DM/ha grown last week.
7. Average pasture cover increased to 2223 kg DM/ha from 2144 kg DM/ha last week, but it is still below target.

8. The Feed Wedge Today



The target line in the wedge below reflects the pre-grazing target of 3154 kg DM/ha and a post grazing of 1480 kg DM/ha which gives us the average pasture cover that we want for the end of the week of 2317 kg DM/ha.

9. The average pasture cover at the moment is 2223kgDM/ha. The target line (the blue line on the graph below) to achieve our targeted of 2,450 pasture cover on the 25th July shows that APC should be at 2317 kg DM/ha today. (The pink line is the actual cover we have been measuring at the farm walks).



10. Pasture cover is still below target by about 90 kg DM/ha but all cows are off the milking platform already so there is no further decision to be made. However, we are analysing options and updating the Feed Budget to make sure we are prepared in case we don't achieve the target on the Milking Platform.

11. The herd of 110 cows that have been on the milking platform are now grazing the East Block and they are split in two herds depending on their condition. There are no cows in this group below BCS 4.5.
12. The herd of 150 (August calving good condition cows) are in very good condition. 230 cows that we trucked to Hororata were about 4.6 with a larger range. We have drafted out 17 lighter cows that have not been gaining weight on Kale and brought them back to pasture on East block.
13. The cows that are at Springston are being visited everyday because our team have responsibility to manage the break fences there. The cows at Hororata are being visited once or twice a week by the team.
14. The 188 heifers were Teat Seal infused, tagged and drenched last week. We expect that the teat seal will reduce the incidence of mastitis at calving by at least 50%.

Next farm walk will be on Tuesday, 14th July.

Farmers or their managers and staff are always welcome to walk with us. Please call to notify us of your intention and bring your plate meter. Phone SIDDC – 03 325 3629

Management Group

Peter Hancox (Farm Manager), Virginia Serra (DairyNZ), George Reveley (for SIDDC).