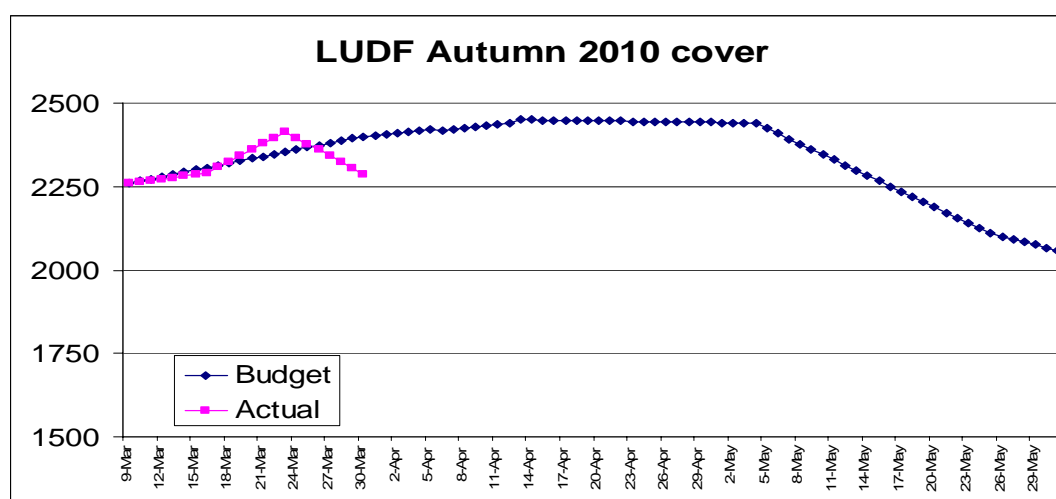




The target line in the wedge reflects the pre-grazing target of 3221 kg DM/ha and a post grazing of 1480 kg DM/ha, which is the pre-grazing needed to feed the cows considering the stocking rate of 3.89 cows/ha (618 cows/159 ha)), cows eating 16 kg DM/cow/day of feed (which comes from pasture and silage) and a rotation length of 28 days. The feed wedge has a deficit of 9.2 t DM. This deficit will be made up by feeding pasture balage.

10. Last week the herd grazed on average 6.1 ha per day: a round length of 26 days
11. Silage was fed last week at 4kg DM/cow/day (total 17.5 t DM silage fed for the week).
12. Nitrogen application has continued at rate of 40 kg N. This was applied to 21 ha this week.
13. The feed budget done for the remainder of the season has a target average pasture cover as shown in the graphic below. The principle being to increase cover until mid April and then hold that until early May. After that we will allow the cover to decline slowly toward the targeted end of May average pasture cover of 2050kgDM/ha. This plan will see pre grazing levels of 3400kgDM/ha at a grazing interval of 32 - 33 days. Building cover provides much more opportunity to milk more days in May than simply staying at say 24 day round and needing to feed a large volume of silage [which may not be possible if weather conditions are wet] to continue milking.



14. Key management decisions to think about this week:
  - Use of Nitrogen going forward. We will continue a complete round of N at 40 kg N/ha. The last round of N will be applied at 30 kg N/ha.
  - Drying off Plan: The main focus is to achieve the cow condition targets at calving next year. We are confident we can put 0.5 of a condition unit (on most cows) during winter so cows need to be at 4.5 CS at the end of May. At present cow condition is about 4.3 and there are some cows below 4.0. We will confirm our strategy after the whole herd is individually condition scored next Tuesday. Options include to dry off light condition cows before the end of the milking season or milk once per day according to their condition, age and when are they going to calve.
  - When and how to extend the round? Round length has been extending as planned in the recent fortnight. We would like to extend the round to 30 days in the coming week and go to 32 days by mid April. The maximum round length we will be happy with is about 33 days, then the pre-grazing required could compromise grass quality and/or our ability to graze to 7 clicks residuals.
  - Use of Silage: We will keep feeding silage so the round is maintained and average pasture cover continues to increase. As can be seen in the graph above we want to increase average cover on the farm to about 2,450 and then use this cover in autumn. Our target is 2,050 kg

DM/ha by the end of May. The good dry conditions mean that the utilization of silage is very good at present so we are happy to use the silage and push the cover for later in the season when feeding supplement may not be as good in terms of utilization. We have about 95 tDM silage in the budget to be used in the autumn.

15. SOIL MOISTURE is just in the margin. We didn't irrigate this week. Now that we are in the autumn evapo-transpiration rates have dropped and persistent high rates are not likely to occur. Our plan is to now allow soil moisture levels to drop lower than the target we have been running at through most of the summer. This is to allow more space for autumn rain.
16. Cows will continue to be offered enough grass to achieve their potential intake and will be moved on when grazing residual targets are achieved.
17. We didn't have any new cases of mastitis this week. SCC has been between 192,000 - 208,000.
18. There were 4 new lame cows this week. These cows are being milked once per day while they recover from the injury.
19. 618 cows are milking into the silo. Cows are producing 1.45 kg MS/cow/day (up from last week at 1.41) and 5.64 kg MS/ha/day (5.50 last week).
20. This is also the time of the year when we are talking to our winter grazing suppliers to confirm what areas of grass and crop are available and to check on the progress of any crops.
21. The eco-n for the autumn has been ordered and will begin to be applied from Mid April.

Next farm walk will be on **Tuesday, 6<sup>th</sup> April 2010, at 9.00 am.**

Farmers or their managers and staff are always welcome to walk with us. Please call to notify us of your intention and bring your plate meter. Phone SIDDC – 03 325 3629

### **Management Group**

---

Peter Hancox (Farm Manager), George Reveley (for SIDDC), Virginia Serra (DairyNZ).

# Lincoln University Dairy Farm - Farm Walk notes

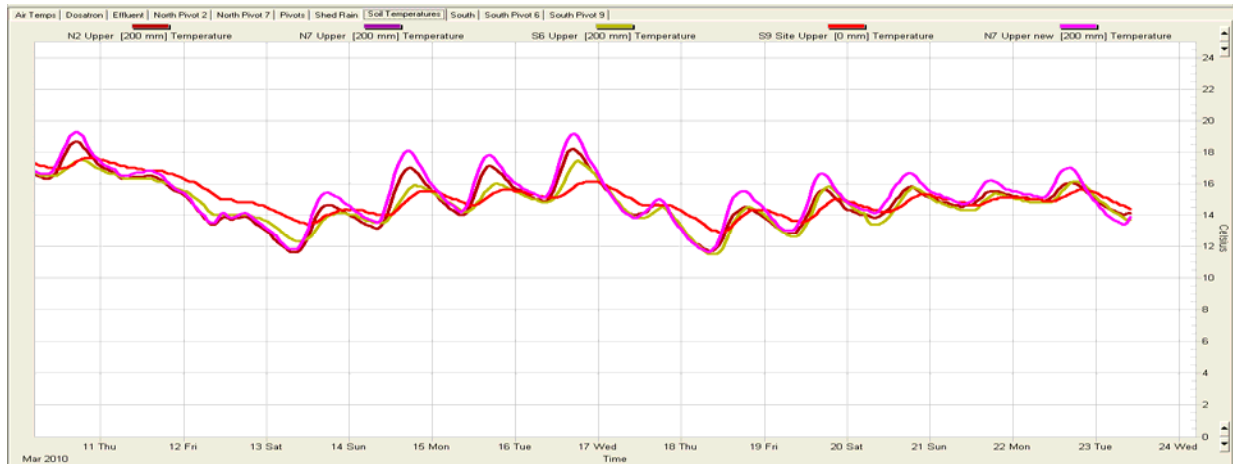
Tuesday, 23<sup>rd</sup> March 2010

## CRITICAL ISSUES FOR THE SHORT TERM

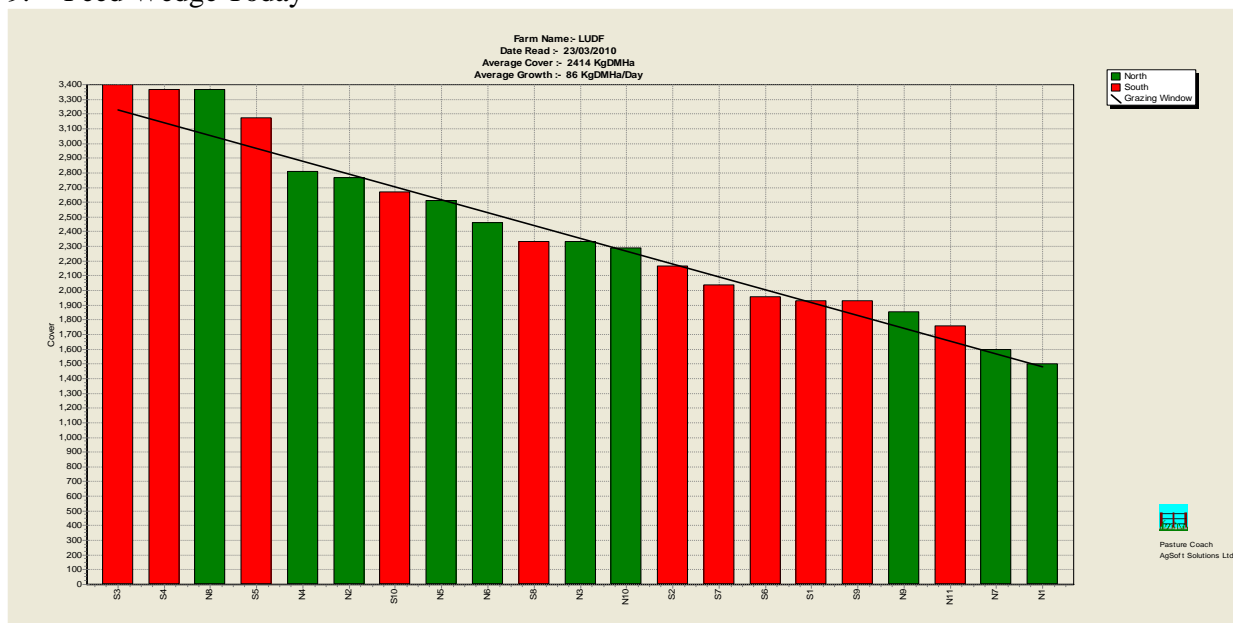
1. Maintain pasture quality by regular monitoring and making necessary changes.
2. Keep grazing residuals to the desired 7 clicks.
3. Closely observe milking cows for mastitis.
4. Monitor cow condition to identify light cows that may need differential treatment in coming weeks.
5. Round length is increasing according to targets.

## Summary of Key Factors affecting Grazing Management & Animal Performance

6. Soil temperatures dropped to 13.7°C this week, down from 14.6°C the previous week.

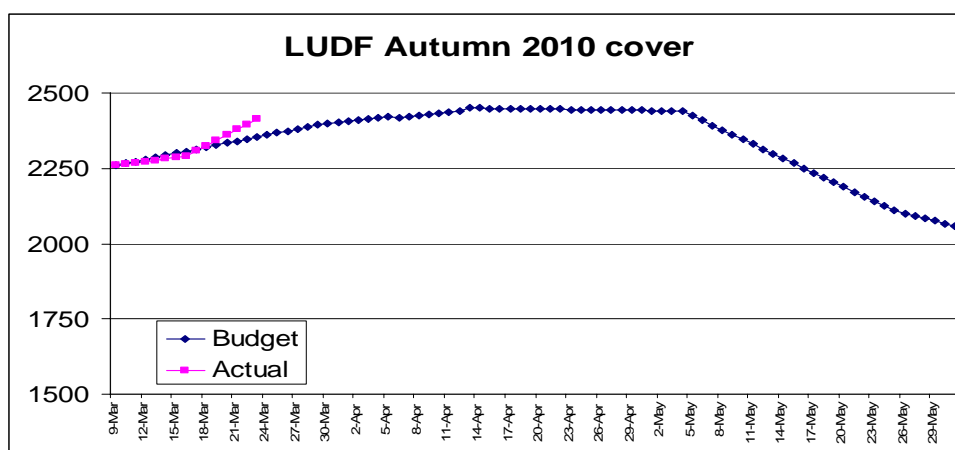


7. We had 4.4 mm of rain over last week.
8. PASTURE GROWTH this week was 86 kg DM/ha, a significant rise from the 68 kg DM/ha grown last week. Average Pasture Cover this week is 2414 kg DM/ha (a good increase from 2290 kg DM/ha last week). Pasture grazing residuals have been maintained at 7 rising plate meter “clicks”.
9. Feed Wedge Today



The target line in the wedge reflects the pre-grazing target of 3,231 kg DM/ha and a post grazing of 1480 kg DM/ha, which is the pre-grazing needed to feed the cows considering the stocking rate of 3.88 cows/ha (618 cows/159 ha), cows eating 15 kg DM/cow/day as pasture and a rotation length of 30 days. The feed wedge has a small surplus which will aid the desired increase in cover and rotation length.

10. Last week the herd grazed on average 5.85 ha per day. Round length of 27 days.
11. Silage was fed last week at 4.7kg DM/cow/day (total 20.3 t DM silage fed for the week).
12. Nitrogen application has continued at rate of 40 kg N. This was applied to 21 ha this week.
13. The feed budget done for the remainder of the season has a target average pasture cover as shown in the graphic below. The principle being to increase cover by the end of April and then use the feed to make milk as demand increasingly goes above supply in May. Our target is 2,050 pasture cover at 31 May.



14. Key management decisions to think about this week:
  - Use of Nitrogen going forward. We will continue a complete round of N at 40 kg N/ha. This will leave room for a last application before the end of the season and stay within budget.
  - When to get rid of Cull cows and drying off plan: 30 low producing empty and cull cows have been dried off during the last 3 weeks and another 10 cows were dried off this week. From this total of 38 cows there are 6 cows that are likely to stay in the herd. Average farm cover targets, herd condition and the feed budget will be used to help decide if that is enough in the mean time. We are currently milking 618 cows.
  - When and how to extend the round: Round length has been extending as planned in the recent fortnight. We are happy to have the round length get to 30 days during this week.
  - Use of Silage: We will keep feeding silage so the round is maintained and average pasture cover continues to increase.
15. SOIL MOISTURE is just in the margin. We have only irrigated for three days this week. Now that we are in the autumn evapo-transpiration rates have dropped and persistent high rates are not likely to occur. Our plan is to now allow soil moisture levels to drop lower than the target we have been running at through most of the summer. This is to allow more space for autumn rain.
16. Cows will continue to be offered enough grass to achieve their potential intake and will be moved on when grazing residual targets are achieved.
17. We had one new case of mastitis this week. SCC has been between 161,000 - 220, 000. This has dropped to the level we were at 2 weeks ago.

18. There were 4 new lame cows this week. These cows are being milked once per day while they recover from the injury.
19. 618 cows are milking into the silo. Cows are producing 1.41 kg MS/cow/day (up from last week at 1.39) and 5.50 kg MS/ha/day (5.47 last week).
20. This is also the time of the year when we are talking to our winter grazing suppliers to confirm what areas of grass and crop are available and to check on the progress of any crops.
21. The eco-n for the autumn has been ordered and will begin to be applied from Mid April.

Next farm walk will be on **Tuesday, 30<sup>th</sup> March 2010, at 9.00 am.**

Farmers or their managers and staff are always welcome to walk with us. Please call to notify us of your intention and bring your plate meter. Phone SIDDC – 03 325 3629.

**Management Group**

---

Peter Hancox (Farm Manager), George Reveley (for SIDDC), Virginia Serra (DairyNZ).

# Lincoln University Dairy Farm - Farm Walk notes

Tuesday, 16<sup>th</sup> March 2010

## CRITICAL ISSUES FOR THE SHORT TERM

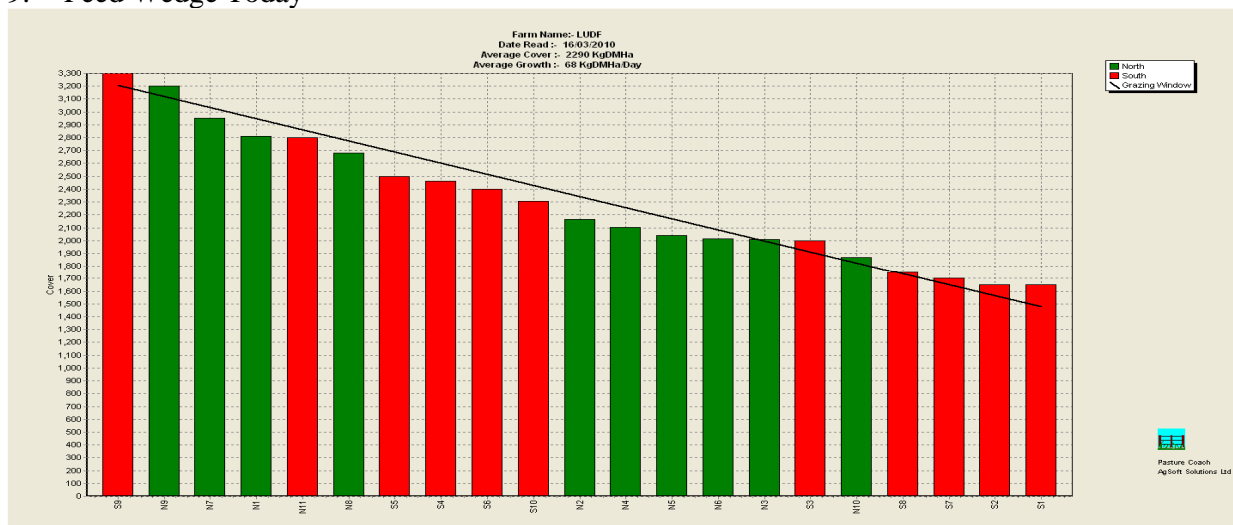
1. Maintain pasture quality by regular monitoring and making necessary changes
2. Keep grazing residuals to the desired 7 clicks
3. Closely observe milking cows for mastitis
4. Monitor cow condition to identify light cows that may need differential treatment in coming weeks
5. Round length is increasing according to targets

## Summary of Key Factors affecting Grazing Management & Animal Performance

6. Soil temperatures dropped to 14.6°C this week from 16.6°C the previous week.

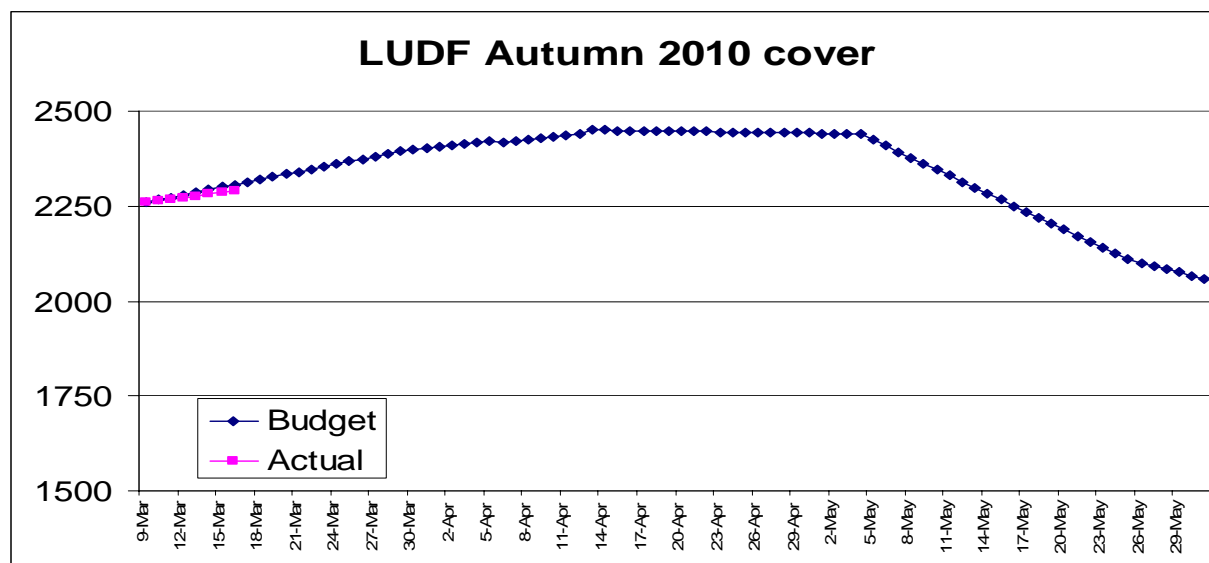


7. We had 10.2 mm of rain over last week.
8. PASTURE GROWTH this week was 68 kg DM/ha, a bit lower than the 73 kg DM/ha grown the previous week. Average Pasture Cover this week is 2290 kg DM/ha (a small increase from 2260 kg DM/ha last week). Pasture grazing residuals have been maintained at 7 rising plate meter “clicks”.
9. Feed Wedge Today



The target line in the wedge reflects the pre-grazing target of 3,204 kg DM/ha and a post grazing of 1,480 kg DM/ha, which is the pre-grazing needed to feed the cows considering the stocking rate of 3.90 cows/ha (620 cows/159 ha)), cows eating 17 kg DM/cow/day and a rotation length of 26 days. The feed wedge has a deficit of 6.6 t DM.

10. Last week the herd grazed on average 6.0 ha per day. Round length of 26.5 days.
11. Silage was fed last week at 3.5kg DM/cow/day (total 15.6 t DM silage fed for the week).
12. Nitrogen application has continued at rate of 40 kg N. This was applied to 43.5 ha this week.
13. The feed budget for the remainder of the season has a target average pasture cover as shown in the graphic below. The principle being to increase cover by the end of April and then use the feed to make milk as demand increasingly goes above supply in May. Our target is 2,050 pasture cover at May 31<sup>st</sup>.



14. Key management decisions to think about this week:
  - Use of Nitrogen going forward. We will continue a complete round of N at 40 kg N/ha. This will leave room for a last application before the end of the season and stay within budget).When to get rid of Cull cows and drying off plan: 28 low producing empty and cull cows have been dried off during the last 3 weeks and another 10 cows were dried off this week. From this total of 38 cows there are 6 cows that are likely to stay in the herd. Average farm cover targets, herd condition and the feed budget will be used to help decide if that is enough in the mean time. We are milking 631 until today and it will be 621 next week.
  - When and how to extend the round: Round length has been extending in the recent fortnight as planned. We are happy to stay on 26 day round for another week.
  - Use of Silage: We will keep feeding the silage at about 2 kg DM/cow/day so the 26 day round is maintained and cover continues to increase.
15. Paddock S3 was roller drilled on the 28<sup>th</sup> of January with Bealey Ryegrass, Weka and Kotare white clover. This paddock has the same weed mix striking as the others have had in the South block. It was sprayed with Preside three weeks ago, and was grazed last Tuesday.
16. We are using the soil moisture deficit information from our 4 Aquaflex sites around the farm to schedule our irrigation. 1.5 days of irrigation was applied last week.
17. Cows will continue to be offered enough grass to achieve their potential intake and will be moved on when grazing residual targets are achieved.
18. We had one new case of mastitis this week. SCC has been between 179,000 - 198, 000. This has dropped to the level we were at 2 weeks ago.

19. There were 5 new lame cows this week. These cows are being milked once per day while they recover from the injury.
20. 631 cows are milking into the silo. Cows are producing 1.39 kg MS/cow/day (up from last week at 1.31) and 5.47 kg MS/ha/day (5.17 last week).

Next farm walk will be on **Tuesday, 23<sup>rd</sup> March 2010, at 9.00 am.**

Farmers or their managers and staff are always welcome to walk with us. Please call to notify us of your intention and bring your plate meter. Phone SIDDC – 03 325 3629

**Management Group**

---

Peter Hancox (Farm Manager), George Reveley (for SIDDC), Virginia Serra (DairyNZ).

# Lincoln University Dairy Farm - Farm Walk notes

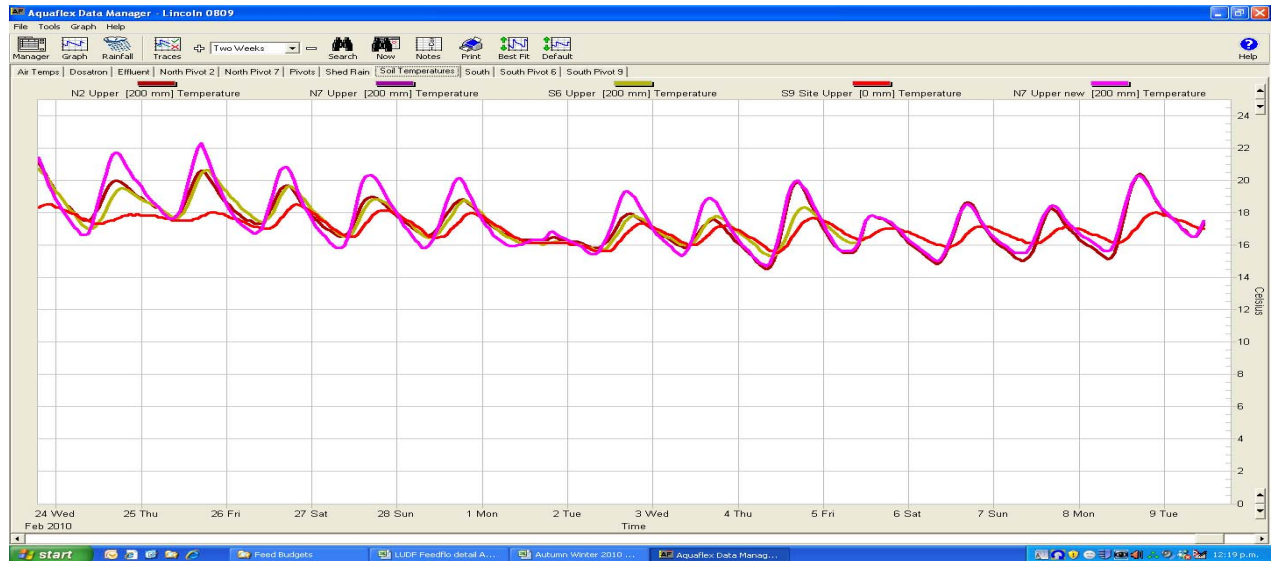
Tuesday, 9<sup>th</sup> March 2010

## CRITICAL ISSUES FOR THE SHORT TERM

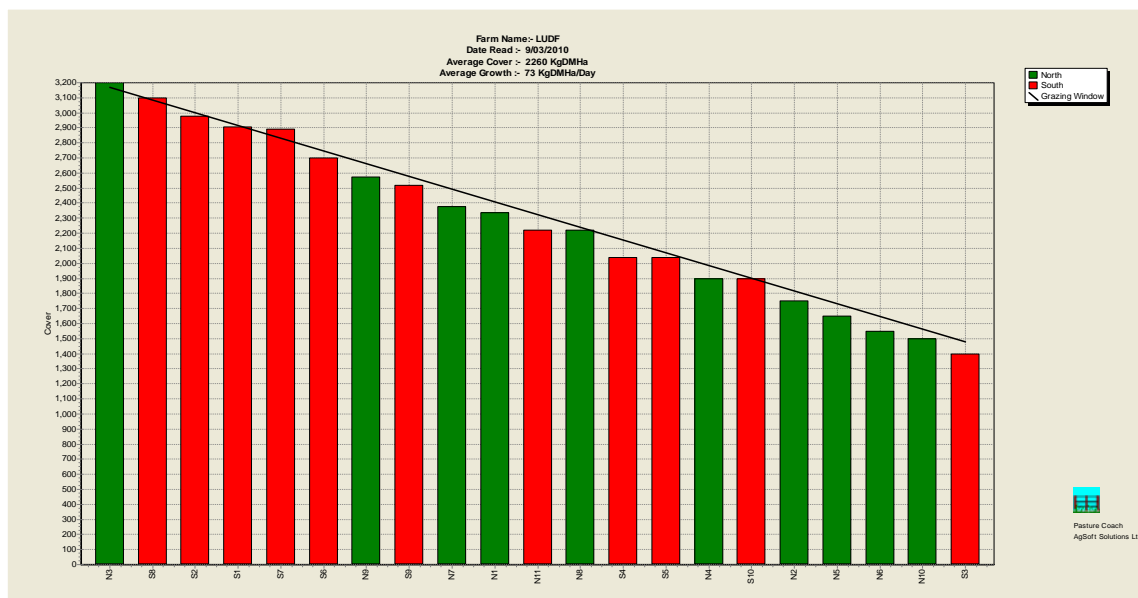
1. **Maintain pasture quality by regular monitoring and making necessary changes**
2. **Keep grazing residuals to the desired 7 clicks**
3. **Closely observe milking cows for mastitis**
4. **Monitor cow condition to identify light cows that may need differential treatment in coming weeks**
5. **Round length is increasing according to targets**

## Summary of Key Factors affecting Grazing Management & Animal Performance

6. Soil temperatures this week 16.6 similar to the 16.7°C we had the previous week.



7. We had 1 mm of rain over last week
8. PASTURE GROWTH this week was 73 kg DM/ha, very similar to the 70 kg DM/ha grown last week. Average Pasture Cover this week is 2260 kg DM/ha (a decline from 2274 kg DM/ha last week). Pasture grazing residuals have been maintained at 7 rising plate meter “clicks”
9. Feed Wedge Today



The target line in the wedge reflects the pre-grazing target of 3,170 kg DM/ha and a post grazing of 1,480 kg DM/ha, which is the pre-grazing needed to feed the cows considering the stocking rate of 3.96 cows/ha (631 cows/159 ha), cows eating 17 kg DM/cow/day and a rotation length of 25 days. The feed wedge has a deficit of 8 t DM.

10. Last week the herd grazed on average 6.28 ha per day. Round length of 25.3 days.
11. Silage was fed last week at the 2.5kg DM/cow/day.
12. Nitrogen application has continued and at a higher rate of 40 kg N. This was applied to 31ha this week.
13. Key management decisions to think about this week:
  - Use of Nitrogen going forward. We will continue a complete round of N at 40 kg N/ha. This will leave room for a last application before the end of the season and within budget.
  - When to get rid of Cull cows: 24 low producing empty and cull cows have been dried off during the last fortnight. Average farm cover targets, herd condition and the feed budget will be used to help decide if that is enough in the mean time. We expect that the current herd will be milked for 3 more weeks at which time another 30 or so will be dried off.
  - When and how to extend the round: Round length has been extending as planned in the recent fortnight.
14. Paddock S3 was roller drilled on the 28<sup>th</sup> of January with Bealey Ryegrass and Weka and Kotare white clover. This paddock has the same weed mix striking as the others have had in the South block. It was sprayed with Preside two weeks ago. This paddock was grazed this morning.
15. We are using the soil moisture deficit information from our 4 Aquaflex sites around the farm to schedule our irrigation. 3 days of irrigation was applied last week.
16. Cows will continue to be offered enough grass to achieve their potential intake and will be moved on when grazing residual targets are achieved.
17. We had one new cases of mastitis this week. SCC has been between 202,000 - 222,000. This is a significant rise from the 180,000 in recent weeks.
18. There were 7 new lame cows this week. These cows are being milked once per day while they recover from the injury.
19. 631 cows are milking into the silo. Cows are producing 1.31 kg MS/cow/day (last week 1.37) and 5.17 kg MS/ha/day (5.57 last week).
20. Bulls were removed from the cows on the 7<sup>th</sup> of January. This gave us a total of 10 weeks of mating 6 weeks of AI and 4 weeks natural mating. Pregnancy test done last week found 87% of cows in calf. All 86 cows that were rechecked were found to be empty.

Next farm walk will be on **Tuesday, 9<sup>th</sup> March 2010, at 9.00 am.**

Farmers or their managers and staff are always welcome to walk with us. Please call to notify us of your intention and bring your plate meter. Phone SIDDC – 03 325 3629

### **Management Group**

---

Peter Hancox (Farm Manager), George Reveley (for SIDDC), Virginia Serra (DairyNZ).

# Lincoln University Dairy Farm - Farm Walk notes

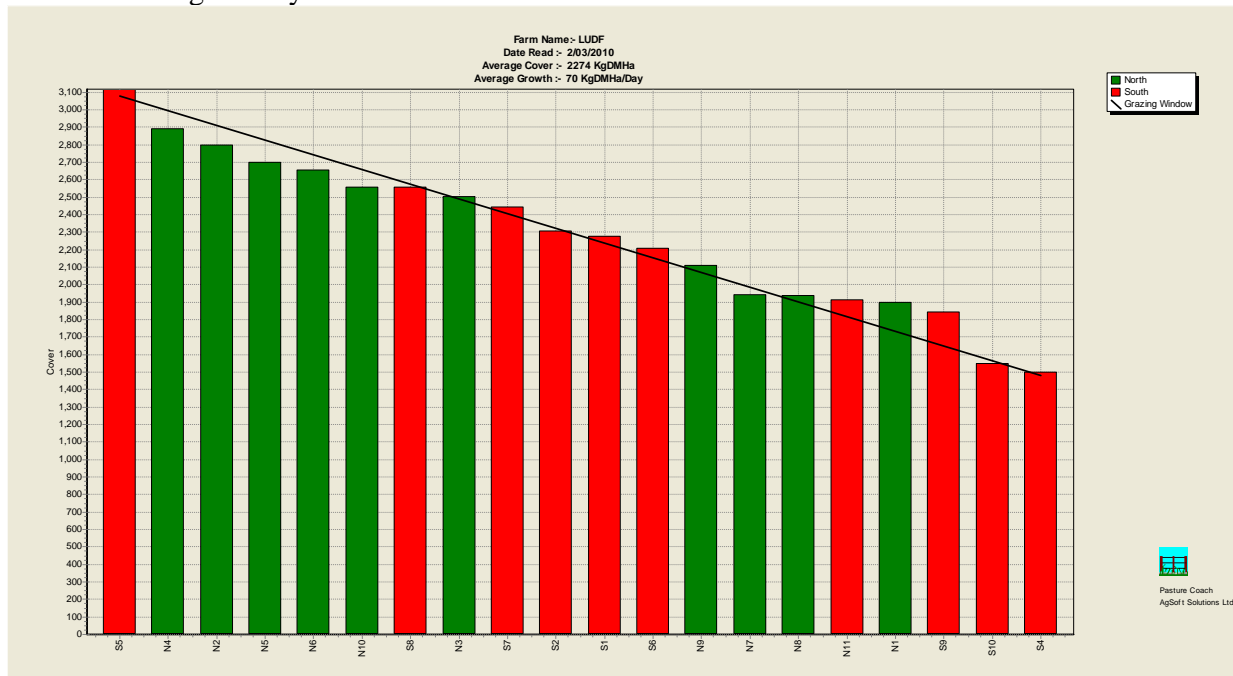
Tuesday, 2<sup>nd</sup> March 2010

## CRITICAL ISSUES FOR THE SHORT TERM

1. Maintain pasture quality by regular monitoring and making necessary changes
2. Keep grazing residuals to the desired 7 clicks
3. Closely observe milking cows for mastitis
4. Monitor cow condition to identify light cows that may need differential treatment in coming weeks

## Summary of Key Factors affecting Grazing Management & Animal Performance

5. Soil temperatures this week 16.6 similar to the 16.2°C we had the previous week. .
6. We had 3 mm of rain over last week
7. PASTURE GROWTH this week was 70 kg DM/ha, lower than the 77 kg DM/ha grown last week. Average Pasture Cover this week is 2274 kg DM/ha (a decline from 2299 kg DM/ha last week). Pasture grazing residuals have been maintained at 7 rising plate meter “clicks”
8. Feed Wedge Today



The target line in the wedge reflects the pre-grazing target of 3,080 kg DM/ha and a post grazing of 1,480 kg DM/ha, which is the pre-grazing needed to feed the cows considering the stocking rate of 4.28 cows/ha (643 cows/150 ha), cows eating 17 kg DM/cow/day and a rotation length of 22 days. The feed wedge has a surplus of 0.8 t DM.

9. Last week the herd grazed on average 6.8 ha per day. Round length of 22 days
10. No Silage was fed last week.
11. We have started Nitrogen application again. We applied 25 kg N to 29 ha this week.
12. Key management decisions to think about this week:
  - a) Use of Nitrogen going forward. We will start 40 kg N/ha on about 35ha this week. This will leave room for a last application before the end of the season and stay within budget),
  - b) When to get rid of Cull cows: Before deciding about it we need to know who are the low producers and MT cows that are still in the system. On Thursday last week we had a Herd

Test as a result of that 12 low producing cows were dried off and removed from the milking platform.

- c) When and how to extend the round: We are not fully confident that the round length of 22 days can be maintained without the addition of silage. The situation will be reviewed later in the week by looking at round length and pre-grazing pasture levels. A Feed Budget will give us the Target Average Pasture Cover and Round length we want to achieve until the end of the season. \
13. Paddock S3 was roller drilled on the 28<sup>th</sup> of January with Bealey Ryegrass and Weka and Kotare white clover. This paddock has the same weed mix striking as the others have had in the South block. It was sprayed with Preside last week. This paddock will be due for a nip off early next week.
  14. We are using the soil moisture deficit information from our 4 Aquaflex sites around the farm to schedule our irrigation. 6 days of irrigation was applied last week.
  15. Cows will continue to be offered enough grass to achieve their potential intake and will be moved on when grazing residual targets are achieved.
  16. We had no new cases of mastitis this week. SCC has been between 173,000 - 168,000.
  17. There were 6 new lame cows this week. These cows are being milked once per day while they recover from the injury.
  18. 643 cows are milking into the silo. Cows are producing 1.37 kg MS/cow/day (last week 1.45) and 5.57 kg MS/ha/day (5.99 last week).
  19. Bulls were removed from the cows on the 7<sup>th</sup> of January. This gave us a total of 10 weeks of mating 6 weeks of AI and 4 weeks natural mating. Pregnancy test done last week found 87% of cows in calf. All 86 cows that were rechecked yesterday were found to be empty.

Next farm walk will be on **Tuesday, 9<sup>th</sup> March 2010, at 9.00 am.**

Farmers or their managers and staff are always welcome to walk with us. Please call to notify us of your intention and bring your plate meter. Phone SIDDC – 03 325 3629

#### **Management Group**

---

Peter Hancox (Farm Manager), George Reveley (for SIDDC), Virginia Serra (DairyNZ).