

# Lincoln University Dairy Farm - Farm Walk notes

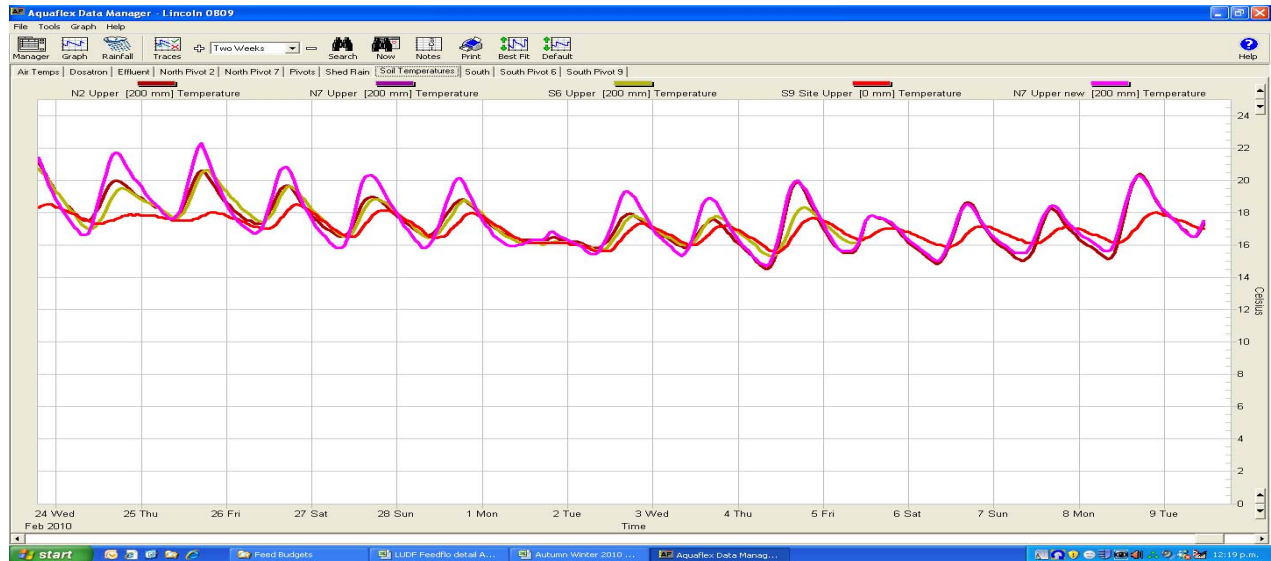
Tuesday, 9<sup>th</sup> March 2010

## CRITICAL ISSUES FOR THE SHORT TERM

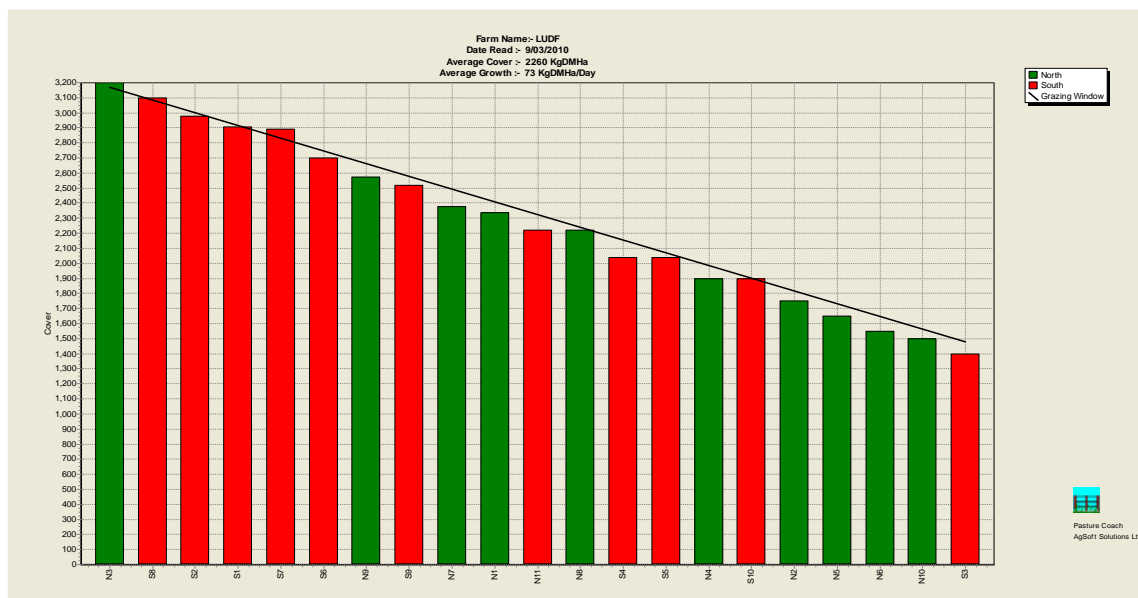
1. **Maintain pasture quality by regular monitoring and making necessary changes**
2. **Keep grazing residuals to the desired 7 clicks**
3. **Closely observe milking cows for mastitis**
4. **Monitor cow condition to identify light cows that may need differential treatment in coming weeks**
5. **Round length is increasing according to targets**

## Summary of Key Factors affecting Grazing Management & Animal Performance

6. Soil temperatures this week 16.6 similar to the 16.7°C we had the previous week.



7. We had 1 mm of rain over last week
8. PASTURE GROWTH this week was 73 kg DM/ha, very similar to the 70 kg DM/ha grown last week. Average Pasture Cover this week is 2260 kg DM/ha (a decline from 2274 kg DM/ha last week). Pasture grazing residuals have been maintained at 7 rising plate meter “clicks”
9. Feed Wedge Today



The target line in the wedge reflects the pre-grazing target of 3,170 kg DM/ha and a post grazing of 1,480 kg DM/ha, which is the pre-grazing needed to feed the cows considering the stocking rate of 3.96 cows/ha (631 cows/159 ha), cows eating 17 kg DM/cow/day and a rotation length of 25 days. The feed wedge has a deficit of 8 t DM.

10. Last week the herd grazed on average 6.28 ha per day. Round length of 25.3 days.
11. Silage was fed last week at the 2.5kg DM/cow/day.
12. Nitrogen application has continued and at a higher rate of 40 kg N. This was applied to 31ha this week.
13. Key management decisions to think about this week:
  - Use of Nitrogen going forward. We will continue a complete round of N at 40 kg N/ha. This will leave room for a last application before the end of the season and within budget.
  - When to get rid of Cull cows: 24 low producing empty and cull cows have been dried off during the last fortnight. Average farm cover targets, herd condition and the feed budget will be used to help decide if that is enough in the mean time. We expect that the current herd will be milked for 3 more weeks at which time another 30 or so will be dried off.
  - When and how to extend the round: Round length has been extending as planned in the recent fortnight.
14. Paddock S3 was roller drilled on the 28<sup>th</sup> of January with Bealey Ryegrass and Weka and Kotare white clover. This paddock has the same weed mix striking as the others have had in the South block. It was sprayed with Preside two weeks ago. This paddock was grazed this morning.
15. We are using the soil moisture deficit information from our 4 Aquaflex sites around the farm to schedule our irrigation. 3 days of irrigation was applied last week.
16. Cows will continue to be offered enough grass to achieve their potential intake and will be moved on when grazing residual targets are achieved.
17. We had one new cases of mastitis this week. SCC has been between 202,000 - 222,000. This is a significant rise from the 180,000 in recent weeks.
18. There were 7 new lame cows this week. These cows are being milked once per day while they recover from the injury.
19. 631 cows are milking into the silo. Cows are producing 1.31 kg MS/cow/day (last week 1.37) and 5.17 kg MS/ha/day (5.57 last week).

Next farm walk will be on **Tuesday, 16<sup>th</sup> March 2010, at 9.00 am.**

Farmers or their managers and staff are always welcome to walk with us. Please call to notify us of your intention and bring your plate meter. Phone SIDDC – 03 325 3629

### **Management Group**

---

Peter Hancox (Farm Manager), George Reveley (for SIDDC), Virginia Serra (DairyNZ).