

Lincoln University Dairy Farm

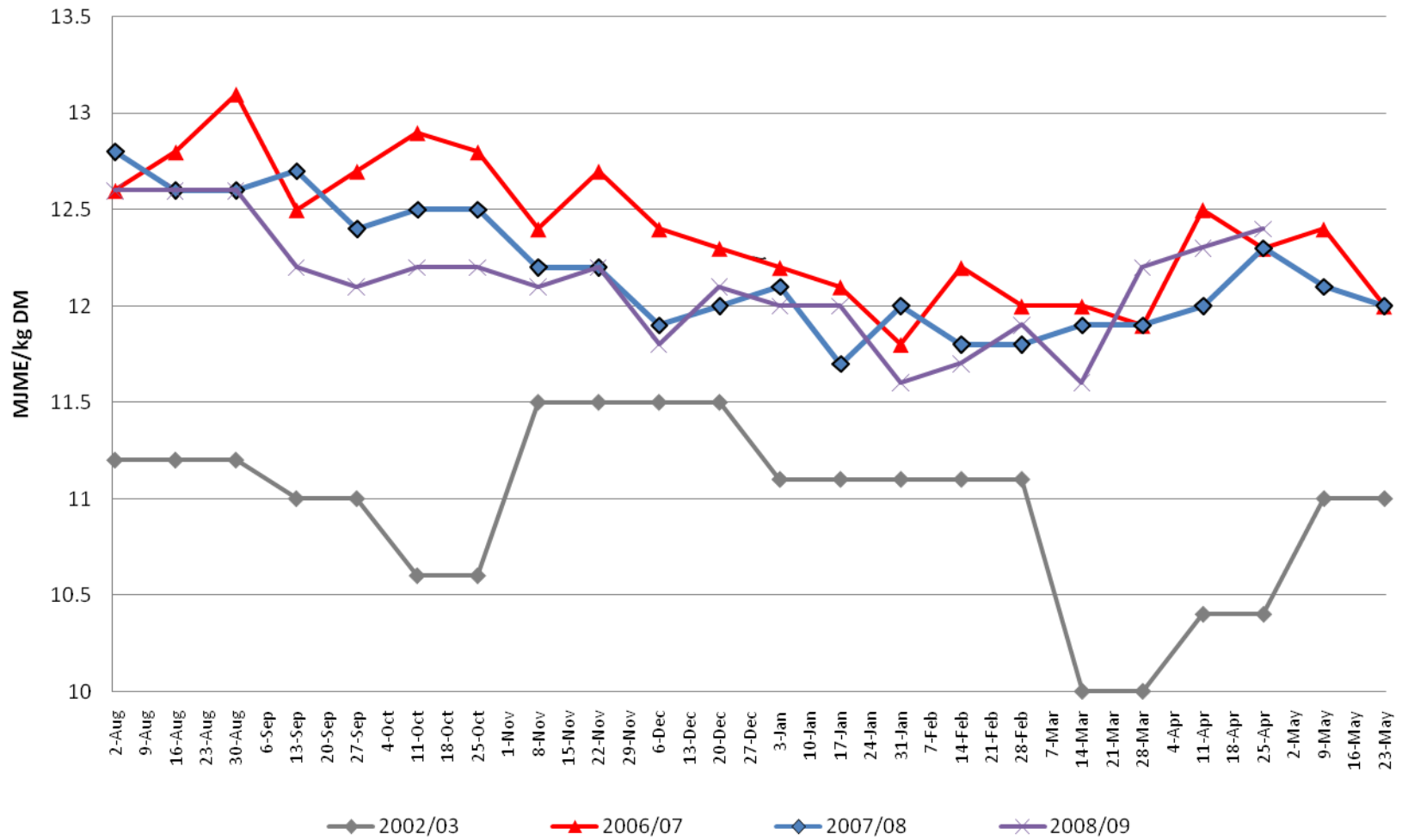
Pasture analysis for 2009/10 season - pre grazing cuts

NOTE: We sample the paddocks immediately in front of the milkers, to height of 3.5cm (7 clicks on the rising plate meter)

The yellow entries indicate values that are at extreme or unusual levels.

Sample Reference	Date sampled	% Protein	% WSC	% NDF	% ADF	Digestibility (DMD)	IVMVIC per kgDM	% DM	% OM
2008/09 Season									
N4 - 21.4 clicks	13/08/2008	22.5	24.0	33.1	18.4	84.4	12.6	18.5	90.3
N11 - 26.4 clicks	13/08/2008	17.9	29.6	34.3	19.4	83.7	12.6	15.9	90.7
5-1 - 23 clicks	28/08/2008	15.6	31.7	38.3	19.6	84.3	12.7	18.5	91.3
5-3 - 20.7 clicks	28/08/2008	17.4	26.3	39.9	20.5	83.1	12.5	19.9	90.9
N-8 17.8 clicks	11/09/2008	21.2	18.7	36.8	21.2	81.5	12.0	17.2	88.6
S-6 17.5 clicks	11/09/2008	27.2	19.4	32.1	18.8	83.8	12.4	14.6	89.0
S-2 21.0 clicks	25/09/2008	21.1	19.3	37.4	20.9	82.7	12.0	18.5	87.7
S-10 17.3 clicks	25/09/2008	25.6	19.2	32.8	19.0	83.8	12.1	16.9	87.4
N-3 15.5 clicks	13/10/2008	23.9	18.6	33.5	19.0	83.6	12.2	15.7	87.8
S-10, 18.4 clicks	28/10/2008	27.0	20.0	32.1	18.2	84.1	12.3	15.9	88.4
S-6, 19.2 clicks	28/10/2008	22.3	17.5	37.7	21.6	81.7	12.0	16.5	88.6
N-9,15.3 clicks	10/11/2008	23.2	20.6	32.7	18.5	82.8	12.2	18.1	88.9
S-9,16.8 clicks	10/11/2008	26.6	17.8	32.0	18.6	82.8	12.2	16.5	89.1
S-1, 20 clicks	25/11/2008	22.1	19.2	34.7	20.2	80.9	11.9	15.1	88.6
S-3, 17.1 clicks	25/11/2008	24.3	14.9	37.7	21.6	79.8	11.8	15.3	89.0
N-S -16.7 clicks	5/12/2008	26.7	15.0	34.9	19.6	81.7	12.0	17.3	88.7
S-6 - 17.7 clicks	5/12/2008	27.2	16.6	30.1	18.0	82.7	12.2	17.7	88.9
S1-18.8 clicks	16/12/2008	24.9	18.3	34.2	19.1	82.5	12.1	15.0	88.6
S2 -18.6 clicks	16/12/2008	23.0	15.3	39.5	22.0	80.0	11.9	16.3	89.2
S8 -19.6 clicks	3/02/2009	20.1	15.7	35.8	22.6	79.0	11.7	15.4	89.3
N3 -18.7 clicks	3/02/2009	20.1	14.5	38.0	22.8	78.9	11.7	15.9	89.4
S5 - 22.1 clicks	17/02/2009	25.3	14.5	38.7	22.1	79.9	11.8	14.2	89.1
N9 - 18.5 clicks	17/02/2009	25.3	14.7	35.2	20.0	80.8	12.0	17.1	89.2
N10 - 15.7 clicks	2/03/2009	27.7	8.1	39.5	22.4	79.1	11.6	14.2	88.2
N11 - 18.5 clicks	2/03/2009	25.2	12.6	35.1	22.1	79.9	11.7	12.7	88.4
S8 - 19.2 clicks	18/03/2009	27.2	16.7	33.6	19.7	82.7	12.2	15.4	88.8
N7 - 18.3 clicks	18/03/2009	24.1	16.5	36.1	20.9	82.1	12.1	15.7	88.9
S3 - 17.3 clicks	2/04/2009	23.7	19.4	35.2	19.5	82.6	12.3	17.3	89.8
N9 - 16.1 clicks	2/04/2009	21.9	21.0	35.8	19.9	82.3	12.3	17.2	89.8
SEASON ROLLING AVERAGES		23.5	18.5	35.4	20.2	82.0	12.1	16.4	89.1
2009/10 Season									
S-1 - 22.1 clicks	2/09/2009	18.5	23.9	33.8	20.9	83.3	12.2	17.9	88.7
N-10 - 21.8 clicks	2/09/2009	18.9	24.4	33.5	20.4	83.5	12.3	19.9	89.1
S-7 - 20.3 clicks	16/09/2009	19.3	22.8	36.7	21.1	82.8	12.4	18.8	90.6
S-10 - 17.8 clicks	16/09/2009	21.3	26.6	30.4	17.8	85.3	12.7	18.7	89.9
N-2 - 17.8 clicks	30/09/2009	21.1	18.6	34.2	20.1	81.6	12.1	17.4	89.3
N-5 - 16.8 clicks	30/09/2009	21.0	20.6	34.3	20.2	81.5	12.1	17.1	89.5
S-7 - 16.1 clicks	14/10/2009	22.3	24.3	31.4	18.2	83.9	12.4	17.5	89.4
N-9 - 16.4 clicks	14/10/2009	25.9	17.7	34.0	19.1	83.2	12.2	16.2	88.7
S-2 - 17.5 clicks	30/10/2009	24.0	20.0	32.7	19.1	83.7	12.3	16.5	88.9
S-4 - 17.2 clicks	30/10/2009	19.8	23.0	35.8	20.4	83.1	12.3	16.8	89.2
N-11 16.7 clicks	12/11/2009	25.2	22.1	28.5	16.5	86.5	12.70	16.0	88.8
S-1 18.2 clicks	12/11/2009	25.1	23.8	25.6	15.5	86.7	12.72	15.8	88.6
S-6 15.2 clicks	23/11/2009	23.5	17.3	34.8	20.1	83.0	12.1	16.4	88.3
S-8 16.4 clicks	23/11/2009	21.6	15.9	38.5	21.7	81.5	12.1	17.9	89.3
S-8 Lower	23/11/2009	16.3	14.1	46.8	27.4	75.4	11.2	17.3	89.1
N-11 17.7 clicks	2/12/2009	18.9	20.9	34.4	20.0	82.3	12.1	12.4	88.9
S-4 17.7 clicks	2/12/2009	19.6	17.3	36.6	21.9	81.4	11.9	12.2	88.2
N-3 17.0 clicks	16/12/2009	23.9	18.7	31.5	18.6	83.7	12.4	17.5	89.8
N-6 17.8 clicks	16/12/2009	24.3	16.6	32.7	18.8	83.0	12.3	17.3	89.2
S-1 16.4 clicks	11/01/2010	21.6	20.3	35.6	20.2	81.8	12.2	17.1	90.0
S-2 15.5 clicks	11/01/2010	18.4	24.5	335.6	19.8	81.1	12.2	16.5	90.6
N-2 16.5 clicks	21/01/2010	19.2	15.7	38.4	22.4	79.8	11.8	14.3	88.8
N-4 16.0 clicks	21/01/2010	20.7	15.5	36.8	21.6	80.6	11.9	13.6	89.1
N-2 19.4 clicks	11/02/2010	26.0	10.8	32.8	21.0	81.2	12.0	13.1	89.3
S-7 17.9 clicks	11/02/2010	25.2	10.8	35.2	21.9	80.1	11.9	15.7	89.3
N-2 16.9 clicks	3/03/2010	21.4	13.6	36.0	21.7	80.5	12.0	16.3	89.5
N-4 17.6 clicks	3/03/2010	23.6	12.8	37.7	21.2	81.7	12.1	17.4	89.5
N-4 19.5 clicks	29/03/2010	23.7	16.6	33.4	20.2	83.5	12.3	17.8	88.6
S-10 18.5 clicks	29/03/2010	21.6	19.7	30.6	19.3	83.3	12.3	16.7	89.0
N-11 18.5 clicks	28/04/2010	20.1	16.0	38.6	21.9	81.1	12.1	15.8	89.7
CURRENT ROLLING AVERAGES :		21.7	18.8	18.8	44.6	82.3	12.2	16.5	89.2

Pasture ME- Pre Grazing Sample



Lincoln University Dairy Farm

Pasture analysis for 2008/09 season - pre grazing cuts

NOTE: We sample the paddocks immediately in front of the milkers, to height of 3.5cm (7 clicks on the rising plate meter)

The yellow entries indicate values that are at extreme or unusual levels.

Sample Reference	Date sampled	% Protein	% WSC	% NDF	% ADF	Digestibility (DMD)	IVMVIC per kgDM	% DM	% OM
N1 - 17.7 clicks	10/01/2008	21.7	15.5	36.1	21.0	80.8	11.9	14.7	88.5
N6 - 17.3 clicks	10/01/2008	21.9	15.5	37.1	21.9	79.1	11.6	14.9	88.5
N4 - 17.2 clicks	16/01/2008	21.8	16.4	34.8	20.4	79.8	11.8	16.3	88.8
N7 - 19.9 clicks	16/01/2008	21.4	16.9	35.3	19.8	82.2	12.2	17.0	89.3
S6 - 17.5 clicks	16/01/2008	25.2	15.6	33.3	19.3	82.1	12.1	16.0	88.8
N9 - 18.8 clicks	25/02/2008	24.9	12.6	36.6	22.1	80.1	11.8	16.0	89.1
N10 - 17.8 clicks	25/02/2008	24.0	13.2	39.3	23.0	79.6	11.8	15.8	89.4
N2 - 18.2 clicks	17/03/2008	21.8	15.5	37.0	20.8	80.8	11.9	15.6	88.6
N7 - 18.0 clicks	17/03/2008	22.8	15.1	33.8	21.2	81.1	11.9	15.0	88.5
S1 - 22.7 clicks	28/03/2008	20.7	17.8	36.3	21.2	81.9	12.0	15.7	88.5
S3 - 20.9 clicks	28/03/2008	25.4	13.8	35.7	20.2	81.4	12.0	15.7	89.1
N1 - 19 clicks	18/04/2008	26.5	13.4	35.9	20.4	82.6	12.3	13.7	89.8
S6 - 20.6 clicks	18/04/2008	22.0	15.8	38.6	21.5	82.0	12.2	13.1	89.6
N6 - 14 Clicks	12/05/2008	23.3	22.3	32.5	18.6	84.6	12.6	18.3	89.9
S8 - 13.3 Clicks	12/05/2008	23.2	24.2	31.1	17.8	84.8	12.7	18.4	90.1
N4 - 21.4 clicks	13/08/2008	22.5	24.0	33.1	18.4	84.4	12.6	18.5	90.3
N11 - 26.4 clicks	13/08/2008	17.9	29.6	34.3	19.4	83.7	12.6	15.9	90.7
5-1 - 23 clicks	28/08/2008	15.6	31.7	38.3	19.6	84.3	12.7	18.5	91.3
5-3 - 20.7 clicks	28/08/2008	17.4	26.3	39.9	20.5	83.1	12.5	19.9	90.9
N-8 17.8 clicks	11/09/2008	21.2	18.7	36.8	21.2	81.5	12.0	17.2	88.6
S-6 17.5 clicks	11/09/2008	27.2	19.4	32.1	18.8	83.8	12.4	14.6	89.0
S-2 21.0 clicks	25/09/2008	21.1	19.3	37.4	20.9	82.7	12.0	18.5	87.7
S-10 17.3 clicks	25/09/2008	25.6	19.2	32.8	19.0	83.8	12.1	16.9	87.4
N-3 15.5 clicks	13/10/2008	23.9	18.6	33.5	19.0	83.6	12.2	15.7	87.8
S-10, 18.4 clicks	28/10/2008	27.0	20.0	32.1	18.2	84.1	12.3	15.9	88.4
S-6, 19.2 clicks	28/10/2008	22.3	17.5	37.7	21.6	81.7	12.0	16.5	88.6
N-9, 15.3 clicks	10/11/2008	23.2	20.6	32.7	18.5	82.8	12.2	18.1	88.9
S-9, 16.8 clicks	10/11/2008	26.6	17.8	32.0	18.6	82.8	12.2	16.5	89.1
S-1, 20 clicks	25/11/2008	22.1	19.2	34.7	20.2	80.9	11.9	15.1	88.6
S-3, 17.1 clicks	25/11/2008	24.3	14.9	37.7	21.6	79.8	11.8	15.3	89.0
N-S -16.7 clicks	5/12/2008	26.7	15.0	34.9	19.6	81.7	12.0	17.3	88.7
S-6 - 17.7 clicks	5/12/2008	27.2	16.6	30.1	18.0	82.7	12.2	17.7	88.9
S1-18.8 clicks	16/12/2008	24.9	18.3	34.2	19.1	82.5	12.1	15.0	88.6
S2 -18.6 clicks	16/12/2008	23.0	15.3	39.5	22.0	80.0	11.9	16.3	89.2
S8 -19.6 clicks	3/02/2009	20.1	15.7	35.8	22.6	79.0	11.7	15.4	89.3
N3 -18.7 clicks	3/02/2009	20.1	14.5	38.0	22.8	78.9	11.7	15.9	89.4
S5 - 22.1 clicks	17/02/2009	25.3	14.5	38.7	22.1	79.9	11.8	14.2	89.1
N9 - 18.5 clicks	17/02/2009	25.3	14.7	35.2	20.0	80.8	12.0	17.1	89.2
N10 - 15.7 clicks	2/03/2009	27.7	8.1	39.5	22.4	79.1	11.6	14.2	88.2
N11 - 18.5 clicks	2/03/2009	25.2	12.6	35.1	22.1	79.9	11.7	12.7	88.4
S8 - 19.2 clicks	18/03/2009	27.2	16.7	33.6	19.7	82.7	12.2	15.4	88.8
N7 - 18.3 clicks	18/03/2009	24.1	16.5	36.1	20.9	82.1	12.1	15.7	88.9
S3 - 17.3 clicks	2/04/2009	23.7	19.4	35.2	19.5	82.6	12.3	17.3	89.8
N9 - 16.1 clicks	2/04/2009	21.9	21.0	35.8	19.9	82.3	12.3	17.2	89.8
CURRENT ROLLING AVERAGES :		23.3	17.7	35.5	20.4	81.8	12.1	16.2	89.1

Lincoln University Dairy Farm

Pasture analysis for 2007/08 season - pre grazing cuts

NOTE: We sample the paddocks immediately in front of the milkers, to height of 3.5cm (7 clicks on the rising plate meter)

The yellow entries indicate values that are at extreme or unusual levels.

Sample Reference	Date sampled	% Protein	% WSC	% NDF	% ADF	Digestibility (DMD)	IVMVIC per kgDM	% DM	% OM
S4 - 21.8 clicks	26/06/2007	20.4	31.4	30.1	15.4	88.6	13.2	18.7	90.4
N4 - 19.9 clicks	26/06/2007	20.7	32.3	28.5	15.4	88.0	13.0	21.0	89.5
S1 - 19.4 clicks	27/07/2007	16.9	29.1	36.4	19.0	86.0	12.8	20.5	90.0
S8	23/08/2007	22.3	26.7	30.8	16.6	87.7	13.1	21.6	90.0
S7	24/08/2007	22.1	23.3	36.2	18.6	82.2	12.1	19.8	88.7
S2 - 24.4 clicks	12/09/2007	19.1	26.0	37.2	19.0	85.6	12.6	21.2	89.2
N10 - 23.4 clicks	12/09/2007	20.1	26.1	36.3	18.9	85.5	12.7	20.8	90.0
N2 - 20 clicks	28/09/2007	23.3	20.5	31.1	18.2	85.2	12.5	15.7	88.5
N4 - 23.3 clicks	28/09/2007	21.5	23.1	33.2	18.7	85.3	12.6	17.4	89.4
N6 - 24 clicks	28/09/2007	23.5	17.8	33.4	19.2	84.7	12.3	16.8	87.8
S3 - 22.1 clicks	4/10/2007	23.5	19.3	36.9	20.0	84.3	12.4	16.5	88.8
S6 - 23.4 clicks	4/10/2007	19.3	23.4	34.9	21.2	83.2	12.2	17.9	88.7
N11 - 22.9 clicks	4/10/2007	23.6	21.1	33.1	18.3	84.6	12.3	17.1	88.1
S8 - 16 clicks	25/10/2007	24.6	20.2	34.2	18.3	84.1	12.5	17.8	89.8
S9 - 17 clicks	25/10/2007	24.4	20.0	34.7	18.9	84.2	12.5	18.7	89.3
N7 - 17.1 clicks	12/11/2007	25.7	18.0	31.5	18.6	83.8	12.3	14.9	88.6
N6 - 16.4 clicks	12/11/2007	21.9	19.9	30.8	19.2	82.5	12.1	15.3	88.2
N11 - 18.6 clicks	28/11/2007	23.3	15.1	37.5	20.7	81.0	11.9	15.8	88.4
S2 - 22.4 clicks	4/12/2007	22.4	16.5	28.8	21.4	80.3	11.9	15.5	89.0
S8 - 21.6 clicks	4/12/2007	22.6	17.6	34.1	20.3	81.0	11.9	14.1	88.3
N4 - 21.4 clicks	4/12/2007	28.5	14.7	32.7	18.8	81.8	12.0	14.8	88.7
N1 - 16.9 clicks	19/12/2007	21.6	16.8	33.5	20.2	81.9	12.1	16.4	88.8
S2 - 18.9 clicks	19/12/2007	20.6	17.9	36.6	21.0	81.1	12.1	19.0	89.6
N1 - 17.7 clicks	10/01/2008	21.7	15.5	36.1	21.0	80.8	11.9	14.7	88.5
N6 - 17.3 clicks	10/01/2008	21.9	15.5	37.1	21.9	79.1	11.6	14.9	88.5
N4 -17.2 clicks	16/01/2008	21.8	16.4	34.8	20.4	79.8	11.8	16.3	88.8
N7 - 19.9 clicks	16/01/2008	21.4	16.9	35.3	19.8	82.2	12.2	17.0	89.3
S6 - 17.5 clicks	16/01/2008	25.2	15.6	33.3	19.3	82.1	12.1	16.0	88.8
N9 - 18.8 clicks	25/02/2008	24.9	12.6	36.6	22.1	80.1	11.8	16.0	89.1
N10 - 17.8 clicks	25/02/2008	24.0	13.2	39.3	23.0	79.6	11.8	15.8	89.4
N2 - 18.2 clicks	17/03/2008	21.8	15.5	37.0	20.8	80.8	11.9	15.6	88.6
N7 - 18.0 clicks	17/03/2008	22.8	15.1	33.8	21.2	81.1	11.9	15.0	88.5
S1 - 22.7 clicks	28/03/2008	20.7	17.8	36.3	21.2	81.9	12.0	15.7	88.5
S3 - 20.9 clicks	28/03/2008	25.4	13.8	35.7	20.2	81.4	12.0	15.7	89.1
N1 - 19 clicks	18/04/2008	26.5	13.4	35.9	20.4	82.6	12.3	13.7	89.8
S6 - 20.6 clicks	18/04/2008	22.0	15.8	38.6	21.5	82.0	12.2	13.1	89.6
N6 - 14 Clicks	12/05/2008	23.3	22.3	32.5	18.6	84.6	12.6	18.3	89.9
S8 - 13.3 Clicks	12/05/2008	23.2	24.2	31.1	17.8	84.8	12.7	18.4	90.1
CURRENT ROLLING AVERAGES :		22.6	19.5	34.4	19.6	83.0	12.3	16.9	89.1

Lincoln University Dairy Farm

Pasture analysis for 2006/07 season - pre grazing cuts

NOTE: We sample the paddocks immediately in front of the milkers, to height of 3.5cm (7 clicks on the rising plate meter)

The yellow entries indicates values that are at extreme or unusual levels.

Sample Reference	Date sampled	% Protein	% WSC	% NDF	% ADF	Digestibility (DMD)	MJME per kgDM	% DM	% OM
N11 - 18 clicks	3/07/2006	20.6	30.7	31.8	17.8	87.8	13.4	21.9	92.0
S1 - 15.8 clicks	25/07/2006	19.1	33.4	30.3	17.4	89.0	13.5	19.1	91.5
S10 - 24 clicks	25/07/2006	13.5	37.7	31.8	18.2	87.8	13.4	19.4	92.2
Winter Grazing 24 clicks	25/07/2006	17.7	14.9	46.6	25.5	77.0	11.4	22.0	89.1
S3 - 18.4 clicks	2/08/2006	21.6	20.1	37.2	20.4	85.0	12.7	15.9	90.1
S9 - 19.8 clicks	2/08/2006	20.3	19.1	39.3	21.6	84.0	12.5	15.6	89.7
S2 - 17.3 Clicks	18/08/2006	19.4	25.2	37.5	20.1	84.6	12.7	18.9	90.7
S8, 19.4 Clicks	31/08/2006	20.9	26.3	33.7	20.4	86.7	13.2	20.8	92.0
N10, 21.2 Clicks	31/08/2006	20.0	23.7	37.7	21.5	86.0	13.0	20.5	91.2
N5 - 25.5 Clicks	13/09/2006	22.0	21.6	37.8	19.6	83.6	12.5	19.0	90.3
N7 - 23 Clicks	15/09/2006	22.7	24.2	35.4	18.0	86.7	12.9	19.5	90.0
S10 - 16.5 Clicks	18/09/2006	18.7	30.5	33.9	17.3	86.0	12.8	19.8	90.0
N6 - 18.9 clicks	21/09/2006	21.7	25.9	34.0	17.5	86.8	13.1	20.7	90.9
N2 - 16.9 clicks	23/09/2006	22.2	22.8	37.1	18.7	84.4	12.7	19.0	91.0
S9 - 19.4 Clicks	27/09/2006	18.6	27.4	35.1	18.8	85.2	12.8	20.2	90.9
N3 - 19.8 Clicks	29/09/2006	21.6	23.5	34.7	18.5	84.6	12.7	18.6	90.7
S2 - 18.4 Clicks	2/10/2006	22.2	22.2	37.8	18.8	85.5	12.9	19.5	91.0
N10 - 21.1 Clicks	4/10/2006	22.6	24.1	34.9	18.4	86.2	13.0	18.5	91.0
S4 - 18 Clicks	9/10/2006	21.2	27.7	34.6	17.9	84.8	12.8	16.4	91.1
N4 - 17 clicks	11/10/2006	19.4	28.6	34.0	17.5	86.0	13.1	20.6	92.0
N11 - 15.5 clicks	16/10/2006	20.1	23.0	37.1	19.7	83.4	12.5	18.4	90.4
N2 - Ht 16.6, Cover 2824	18/10/2006	22.7	23.7	32.3	17.0	86.0	12.8	20.1	90.2
N3 - 19.8	20/10/2006	19.9	25.5	36.2	18.9	84.9	12.8	21.6	90.8
S2 - 16.8 Clicks	25/10/2006	19.4	27.6	34.1	18.0	85.0	12.9	21.2	91.5
S4 - 15.5 Clicks	27/10/2006	21.5	25.5	35.6	19.1	82.6	12.3	17.2	89.5
N6 - 15.3 Clicks	1/11/2006	23.0	19.5	36.7	19.6	83.0	12.9	18.2	90.4
S9 - 17.3 Clicks	2/11/2006	20.8	23.5	36.8	19.1	83.1	12.4	17.8	90.0
N7 - 16.8 clicks	6/11/2006	19.1	24.1	36.4	20.1	83.0	12.4	18.0	90.3
N2	7/11/2006	23.7	18.3	36.9	20.6	82.1	12.3	13.1	90.4
S5 - 20 clicks	8/11/2006	23.1	20.1	38.0	20.9	81.0	12.1	15.5	89.9
S3 - 17.1 clicks	8/11/2006	22.4	20.9	37.6	19.9	82.3	12.3	19.0	90.0
S3	9/11/2006	23.2	25.5	34.9	17.8	84.5	12.6	19.5	90.0
N10 - 17.2 clicks	10/11/2006	23.9	22.8	35.1	18.4	85.4	12.9	17.9	91.0
N3 - 17.8 clicks	13/11/2006	21.9	23.3	36.0	19.3	84.2	12.6	16.2	90.4
S2 - 17.4 clicks, 2936 cover	15/11/2006	21.0	23.4	37.4	19.7	83.3	12.6	19.5	91.6
S9 - 17 clicks	20/11/2006	22.9	21.4	36.7	19.6	83.1	12.4	15.8	90.2
N6 - 18.8 Clicks	22/11/2006	20.7	21.3	39.7	21.3	81.6	12.3	18.7	91.1
N8 - 17.2 clicks	24/11/2006	20.1	19.1	39.9	21.4	80.2	11.9	17.5	89.3
N9 - 16 clicks	27/11/2006	25.1	19.8	37.0	19.4	82.8	12.5	16.9	90.8
S3 - 18.8 clicks	29/11/2006	16.7	26.2	38.9	20.9	81.9	12.4	22.6	91.4
S5 - 19 clicks	29/11/2006	21.2	26.1	34.2	18.7	83.6	12.5	17.1	90.5
N3 - 19.9 clicks	1/12/2006	20.4	21.2	39.7	21.5	80.5	12.1	18.2	90.6
S6 - 17 clicks	4/12/2006	24.5	18.6	38.3	20.7	81.0	12.1	16.5	90.0
S2 - 16 clicks	6/12/2006	20.3	23	38.1	20.3	82.4	12.4	19.9	91.0
N4 - 15.6 clicks	8/12/2006	18.9	26.0	37.9	20.2	82.7	12.6	18.3	91.6
N5 - 14.6 clicks	11/12/2006	22.7	19.0	40.0	21.4	80.6	12.0	15.5	89.6
N11 - 15 clicks	13/12/2006	23.0	18.3	39.6	21.8	80.4	12.1	19.9	90.9
S10 - 15.6 clicks	13/12/2006	20.2	25.2	35.8	19.7	82.9	12.5	17.9	91.0
N7 - 14.3 clicks	15/12/2006	21.5	23.7	35.2	18.7	84.1	12.7	18.7	90.9
N3 - 14.3 clicks	18/12/2006	21.8	23.2	36.0	19.2	84.0	12.7	18.9	91.0
OLD	18/12/2006	12.2	26.6	50.0	27.3	69.2	10.8	29.4	93.5
S5 - 17.6 clicks	20/12/2006	19.6	25.6	35.2	19.7	81.5	12.1	14.5	89.8
N3 - 17 clicks	20/12/2006	20.0	20.7	39.5	21.5	80.5	12.1	14.6	90.5
N3 - 19 clicks	8/01/2007	20.0	22.2	36.5	20.1	82.7	12.4	17.4	90.5
N6 - 22.2 clicks	17/01/2007	26.9	14.0	36.7	21.1	81.0	12.1	13.1	90.0
S8 - 24.7 clicks	17/01/2007	22.3	15.7	40.3	23.5	78.3	11.7	14.7	90.0
N-1 23 clicks	24/01/2007	19.1	18.3	41.1	23.7	79.4	11.8	14.7	89.3
N-8 24.5 clicks	24/01/2007	18.9	17.8	42.6	22.7	78.3	11.7	14.7	90.0
N-9 24.3 clicks	24/01/2007	20.6	15.7	40.4	21.9	79.4	11.7	15.4	88.9
N-1 17.9 clicks	2/02/2007	18.9	22.2	36.9	19.8	81.1	12.2	16.2	89.6
N-1 17.8 clicks	14/02/2007	22.3	17.1	36.6	20.2	82.0	12.1	14.7	89.1
S-7 18.3 clicks	14/02/2007	24.2	15.3	37.8	21.2	80.9	11.9	14.4	89.9
S8 - 22.4 clicks	6/03/2007	25.3	12.0	41.6	23.0	79.3	12.0	15.4	90.8
N 8 - 24 clicks	12/03/2007	21.6	13.7	42.1	24.0	80.2	11.9	14.9	89.6
N 7 - 24.3 clicks	23/03/2007	22.4	17.4	35.2	21.6	83.3	12.3	14.6	89.3
S6 - 23.5 clicks	11/04/2007	27.2	13.6	38.7	21.0	82.1	12.4	12.5	91.0
N9 - 24 clicks	12/04/2007	25.3	17.6	34.9	20.1	83.3	12.5	14.7	90.7
N3 - 16.7 clicks	9/05/2007	25.5	16.8	35.7	20.4	82.8	12.3	16.3	89.8
16.4 clicks	30/05/2007	25.7	19.2	29.8	16.3	86.4	12.5	17.8	87.6
CURRENT ROLLING AVERAGES :		21.9	37.1	20.0		82.8	12.4	17.8	90.5

Lincoln University Dairy Farm

Pasture analysis for 2005/06 season - pre grazing cuts

NOTE: We sample the paddocks immediately in front of the milkers, to height of 3.5cm (7 clicks on the rising plate meter)

The yellow entries indicates values that are at extreme or unusual levels.

Sample Reference	Date sampled	% Protein	% WSC	% NDF	% ADF	Digestibility (DMD)	MJME per kgDM	% DM	% OM
S9 2800-3000 sample 1	10/08/2005	25.9	18.8	36.9	19.4	87.3	13.1	16.8	90.4
S9 2800-3000 sample 2	10/08/2005	25.8	17.8	36.4	19.2	86.6	12.8	17.6	89.6
N10 2700-2800 sample 3	10/08/2005	26.9	17.3	37.0	19.9	86.1	12.9	16.9	90.4
S3 21 clicks (3440 kgDM/ha)	17/08/2005	20.2	23.4	40.0	20.3	86.6	13.0	19.9	90.8
N4 20 clicks (3300 kgDM/ha)	17/08/2005	26.7	18.2	36.4	19.2	87.6	13.1	18.3	90.3
S 11 - 22 Clicks (3580 kgDM/ha)	1/09/2005	19.9	25.9	36.3	18.5	87.1	13.0	17.3	90.0
N3 20 clicks (3300 kgDM/ha)	1/09/2005	24.7	19.5	36.4	19.5	87.0	12.8	18.4	88.7
S7, 18.5 Clicks (3090 kgDM/ha) Italian	16/09/2005	25.9	18.0	34.2	19.4	85.9	12.7	16.4	89.6
N11, 20 Clicks (3300 kgDM/ha)	16/09/2005	22.8	20.4	36.9	19.9	86.3	12.8	16.3	89.8
N3, 18 Clicks (3020 kgDM/ha)	3/10/2005	25.5	18.4	36.6	20.1	85.6	12.8	16.0	90.5
N7, 18 Clicks (3020 kgDM/ha)	3/10/2005	20.0	24.6	35.4	19.3	85.2	12.8	18.2	90.8
N5, 16 Clicks (2740 kgDM/ha)	18/10/2005	23.3	20.1	38.0	20.4	85.6	12.9	16.8	90.8
N11, 18 Clicks (3020 kgDM/ha)	18/10/2005	28.5	16.5	33.7	18.1	85.7	12.8	15.4	90.0
S5 Tabu	2/11/2005	21.5	22.0	37.5	20.7	84.0	12.4	16.2	89.2
S8	2/11/2005	25.1	17.1	36.6	20.2	84.5	12.6	16.6	90.3
N9	2/11/2005	24.9	16.3	39.6	21.3	83.4	12.4	15.9	90.0
S8 - 14.7 Clicks, 2560 kgDM/ha	15/11/2005	24.1	19.1	34.7	20.2	85.0	12.6	19.7	89.5
N2 - 15.7 Clicks, 2700 kgDM/ha	15/11/2005	20.4	21.0	38.6	21.9	82.3	12.3	18.8	90.1
S8, 16 clicks 2780 kgDM/ha	1/12/2005	24.4	17.4	33.7	19.8	84.6	12.4	15.9	88.8
S10, Bealey, 16 clicks 2730 kgDM/ha	1/12/2005	19.6	29.0	32.8	17.5	87.6	13.0	17.6	89.7
N 11 - 17.5 Clicks 2950 kgDM/ha	19/12/2005	21.9	15.1	45.6	24.6	78.4	11.7	21.1	90.1
N8 - 22 Clicks 3580 kgDM/ha	20/12/2005	20.6	16.2	42.1	23.5	79.6	12.0	16.8	90.7
S4 - 23 Clicks 3720 kgDM/ha Italian	20/12/2005	16.3	19.6	47.2	26.0	75.0	11.3	16.9	90.9
N8 - 18.2 Clicks 3048 kgDM/ha	12/01/2006	20.1	16.3	39.9	23.7	79.7	12.0	15.5	90.5
S1 - 18 Clicks 3020 kgDM/ha Bealey	12/01/2006	21.1	20.8	36.6	20.3	84.4	12.6	15.0	90.3
N9 - 17.3 Clicks, 2920 kgDM/ha	1/02/2006	21.6	11.0	42.3	24.9	79.3	11.7	13.7	89.2
N10 - 16.4 Clicks, 2800 kgDM/ha	1/02/2006	26.1	11.2	39.7	23.0	80.8	12.0	13.9	89.7
S6 - 17 clicks 2880 kgDM/ha	15/02/2006	25.1	14.4	37.2	21.6	81.7	12.1	17.4	90.1
N5 - 16.5 clicks 2810 kgDM/ha	15/02/2006	21.0	15.4	39.7	23.5	80.1	12.0	17.9	90.0
S3 - 19 clicks 3160 kgDM/ha	3/02/2006	20.8	16.7	39.2	22.4	81.7	12.3	18.9	90.5
N6 - 20 clicks 3300 kgDM/ha	3/02/2006	23.1	14.0	39.3	22.7	81.6	12.2	16.3	89.8
N8 - 15 Clicks, 2600 kgDM/ha	20/03/2006	24.7	17.2	34.2	20.3	85.5	12.9	17.3	91.2
N10 - 15.3 Clicks, 2642 kgDM/ha	20/03/2006	22.5	19.1	35.9	21.0	84.8	12.9	16.7	91.6
N1 - 18.1 Clicks, 3034 kgDM/ha	31/03/2006	23.5	19.6	37.8	21.0	85.5	12.9	17.2	91.4
S8 - 17.9 Clicks, 3006 kgDM/ha	31/03/2006	25.5	14.4	37.1	21.2	83.6	12.6	15.9	90.7
N 10 - 17.9 Clicks 3006kgDM/ha	13/04/2006	25.7	15.0	38.0	21.0	85.4	12.7	16.0	90.0
S 1 - 19.6 Clicks 3244 kgDM/ha	13/04/2006	22.2	22.4	33.9	19.0	86.9	12.9	17.0	89.6
S 5, 19 Clicks 3160 kgDM/ha	1/05/2006	25.9	18.8	33.1	19.1	84.9	12.7	13.8	90.3
S 8 - 17 Clicks 2880 kgDM/ha	1/05/2006	26.1	14.5	36.8	21.0	84.1	12.5	16.5	89.8
N4 - 18 Clicks 3020 kg DM/ha	17/05/2006	22.4	21.2	34.9	20.0	84.8	12.6	16.1	89.6
N7 - 15.7 Clicks 2700 kg DM/ha	17/05/2006	21.4	20.0	38.9	21.9	83.4	12.5	17.9	90.5
CURRENT ROLLING AVERAGES :		23.1	18.4	37.5	21.0	83.9	12.5	16.9	90.1

