

# SDF Farm Walk Notes

Wednesday, 16 March 2011

Total Effective Ha: 295ha

Winter Crop Ha: 33ha

Area in Grass Ha: 262

Cows on farm: 734

## CRITICAL ISSUES FOR THE SHORT TERM

1. Monitor APC and residuals
2. Identify surpluses
3. Maintain round length at around 35 days
4. Cut surpluses and get area back into round asap
5. Monitor BCS and manage cows to achieve correct BCS for all cows

## COW NUMBERS

1. 731 cows in total. 685 cows currently in milk – 655 milked TAD and 30 OAD.
2. 46 dry cows off farm.

## MILK PRODUCTION

	This week	↑ or ↓ compared to last week	↑ or ↓ compared to last year
Per cow (kgMS/cow/day)	1.45	↓0.03	
Per ha (kgMS/ha/day)	3.83	↓ 0.06	
kgMS/day	992	↓ 16	
Month to date %			↑ 3.7%
Season to date %			↓2.6%

3. To date 863 kgMS has been collected per ha.
4. SCC averaged 113k/ml

## ANIMAL HEALTH & BCS

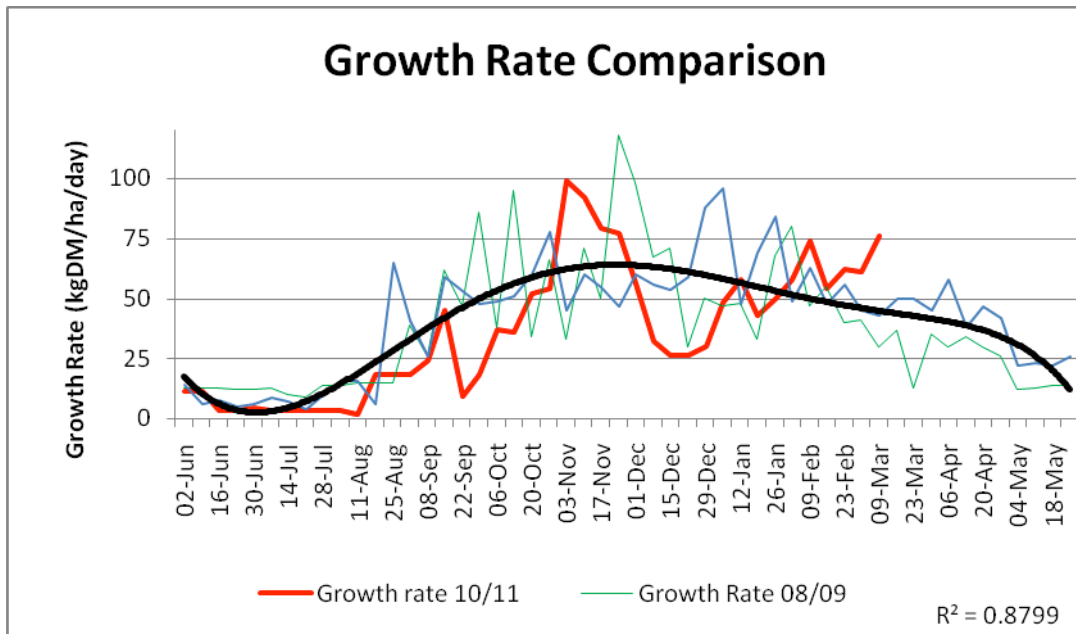
5. 15 cows were treated for lameness, 0 for mastitis and 15 for other causes.
6. 0 deaths

## MATING & LATE LACTATION MANAGEMENT

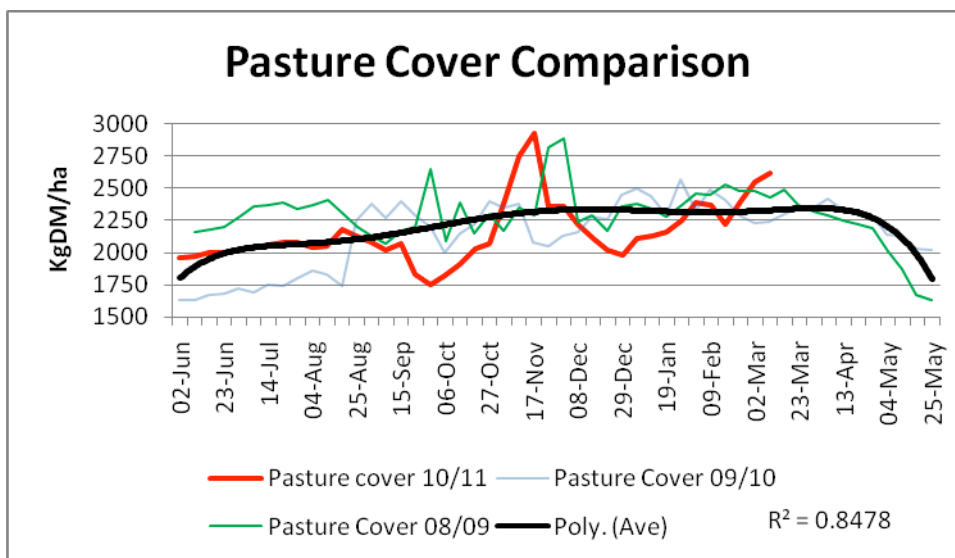
7. For the full report on the mating season see the Focus Day handout on SIDCC website. The next scan will be done next week.
8. The heifers were scanned and had an empty rate of 3.5%. Half of the MT heifers suffered Yersinosis as R1's.
9. Cows with a BCS of below 4 will be drafted into a separate mob at the end of the month and be fed 2kg whole crop silage per day. Depending on condition they may be put on OAD, but the situation will be reviewed at that time.

## PASTURE GROWTH AND AVERAGE PASTURE COVER

10. APC is 2600kgDM/ha. This includes 31ha still to be cut. Pre-grazing covers averaged 3,000kgDM/ha with residuals of 1,750 kgDM/ha. (RPM formula = clicks x 140 + 500 where one click = 0.5cm compressed height).
11. Although the residuals are slightly up, the paddocks are still even with no clumps. Calculated intakes per cow/day are 3036kgDM/ha – 1750kgDM residual = 1286kgDM/ha x 8.5ha = 10931kgDM/685 cows = 16kgDM/cow/day. This is the expected intakes for this level of production.
12. Average pasture growth rate was 76kgDM/day. This is the highest growth recorded at this time of the year since the demo farm began and is 85% above the longterm average for this time of the year.
13. The comparison between the growth rates over the past 3 seasons is shown below. Growth rates were considerably above average and the highest recorded since the start of the demo farm.



14. Below is a graph comparing the pasture cover for 4 seasons. Covers are slightly above the long term average. The APC is getting higher due to the paddocks shut for baleage and record growth rates for this time of the year.



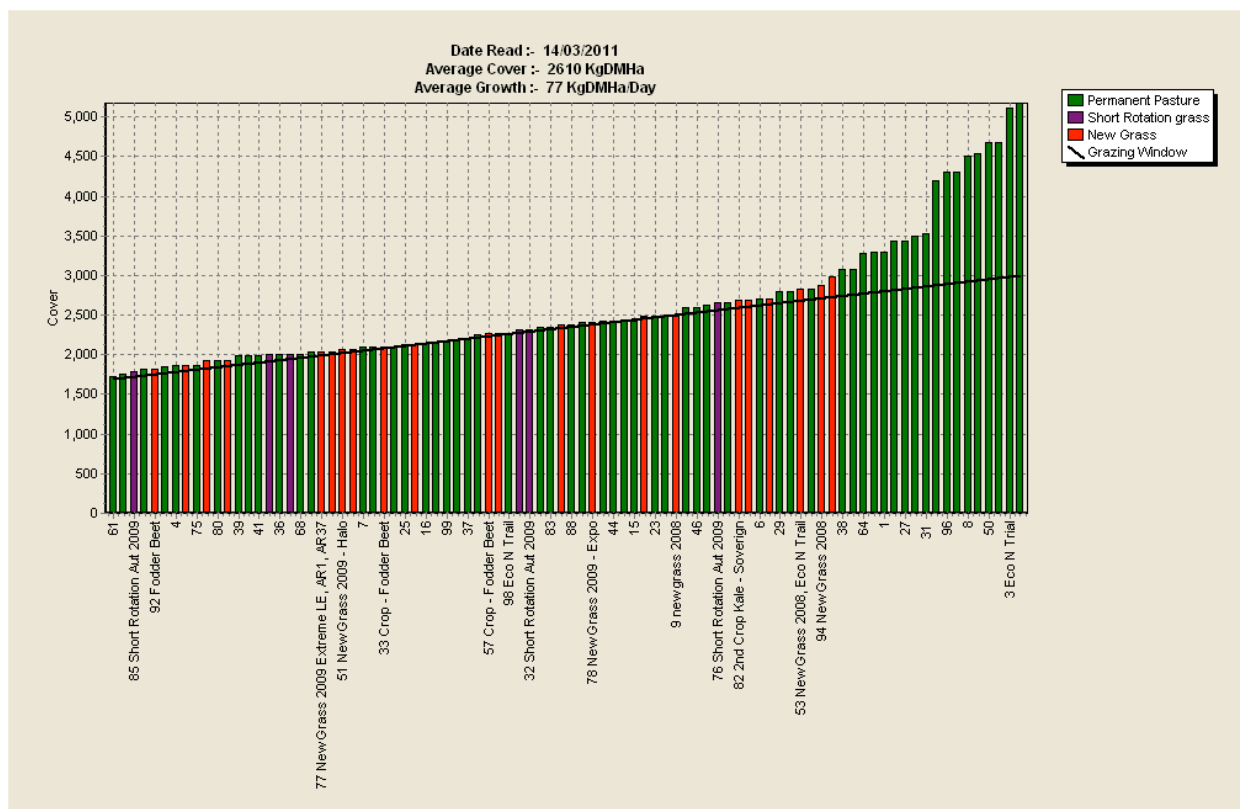
**PASTURE MANAGEMENT AND FEEDING LEVELS**

15. The graph is shown below. The pre-grazing required is shown below.

$$\text{Stocking rate} \times \text{DM intake} \times \text{Round length} + \text{Residual}$$

2.62 cows/ha x 16 kgDM x 31 days + 1600 = 2900 kgDM/ha pre-grazing covers required

14. The round has increased to 31 days. Once the baleage paddocks return the round will be increased to 35 days.  
 16. The APC is higher than normal due to the large number of paddocks shut for baleage.



### SURPLUS MANAGEMENT

1. Growth was 35kgDM/day or 85% above average – 76kgDM/day.
2. The round last week was 1/31st of the available grass area per day – 8.5 ha/day.
3. 15.5 ha were cut last week – and yielded 175 bales.
4. There are still 31 ha to be cut and hopefully this will yield around 350 bales.
5. A total of 1019 kgDM/ha of supplement has been made on farm this season.

### NITROGEN AND FERTILISER USE

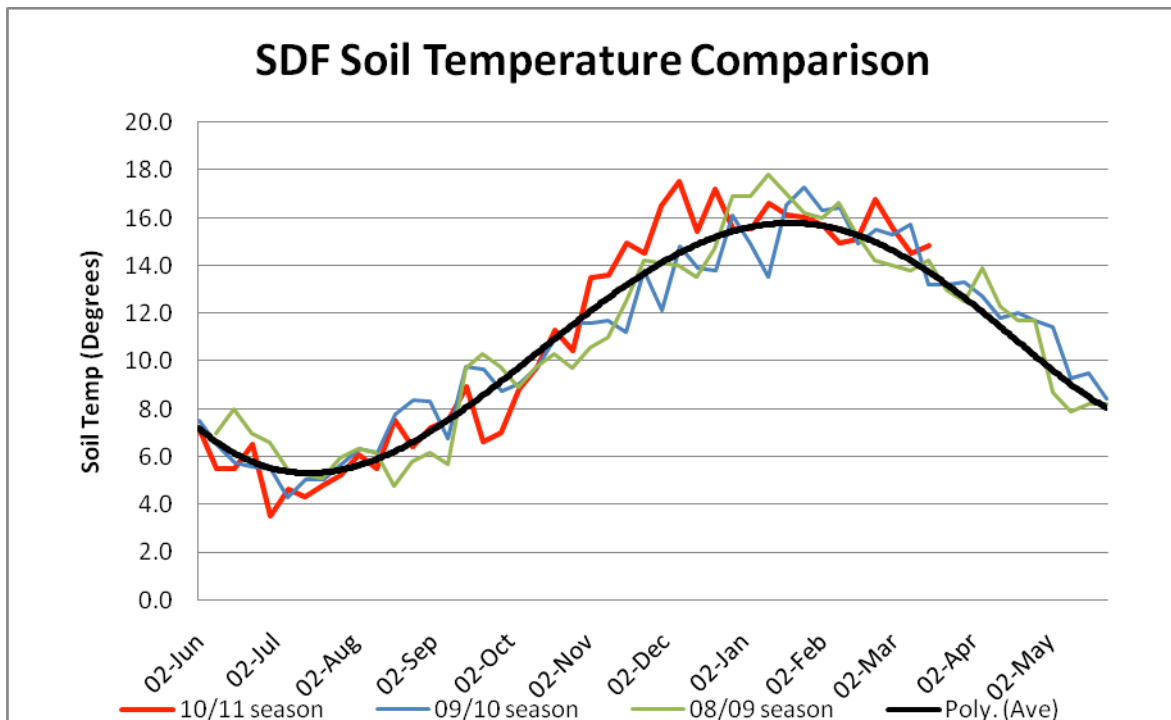
6. A total of 179kgN/ha has been applied so far this season.
7. Urea was applied at 60kg/ha to 21.74 ha.

### CROP MANAGEMENT

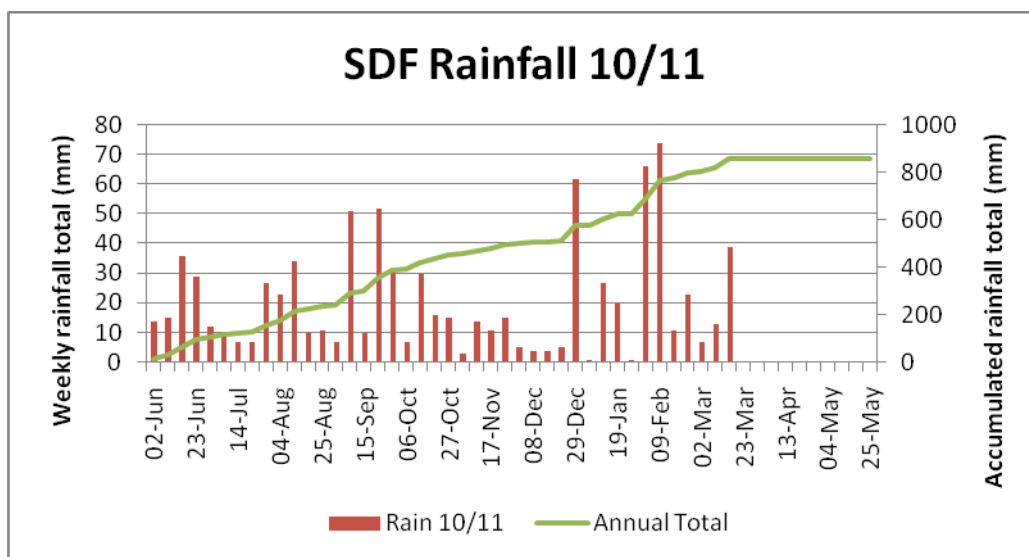
8. All crops have now received urea.
9. The swedes bulbs seem to be improving.
10. Crops will be weighed this week.

### CLIMATE DATA AND COMPARISONS

11. Soil temperatures at 9 am have averaged 14.8°C this week, an increase of 0.3°C from last week's average.
12. The graph below shows how the average weekly 9am (10cm) soil temperature is tracking throughout the season and compares against the previous two seasons.



1. The farm had 39mm rain last week.
2. The graph below shows the weekly rainfall and accumulated total for the season.



#### STAFF NEWS

The rest of the management team would like to congratulate Sharn and Billy with the birth of their son during the past week. Both are doing well.

#### FUTURE MANAGEMENT PLANNING

1. Monitor residuals and surpluses closely.
2. Get cut paddocks back into round asap.
3. Keep round length out at around 35 days
4. Improving BCS of tail end cows
5. Plan autumn round length and APC at dry off

The WEEKLY management meeting will be on **Wednesday, 23 Mar 2010 @ 11am.**

On behalf of the **Management Group** Barry Bethune (Farm Manager), Sharn Roskam (Farm Supervisor) and Howard de Klerk (DairyNZ)