

Southland Monitor Farm Project

Weekly Update – 30 Apr 08

General Comments

Soil temperatures have climbed above 10 °C in all regions this week however they are likely to drop again following the cold change predicted for Wednesday/Thursday. Growth rates have jumped considerably from last week with all regions recording between 37 and 47 kg DM/ha/day. Some of the increase is likely to be compensation for the underestimate of pasture cover last week due to the strong winds and rain flattening the pasture. The Eastern, Central and West Otago farms are applying urea following the cows while the demonstration farm and the northern farm have commenced Eco-N applications.

Milk production for the demonstration, eastern and west Otago farms has held while the adoption of OAD on the northern farm and 16 hour milking on the central farm has seen production drop slightly on last week. Both farms have reduced milking frequency in an attempt to stop cows stripping condition off their backs. The eastern farm has sent away 35 culls and has dried a further 22 cows off.

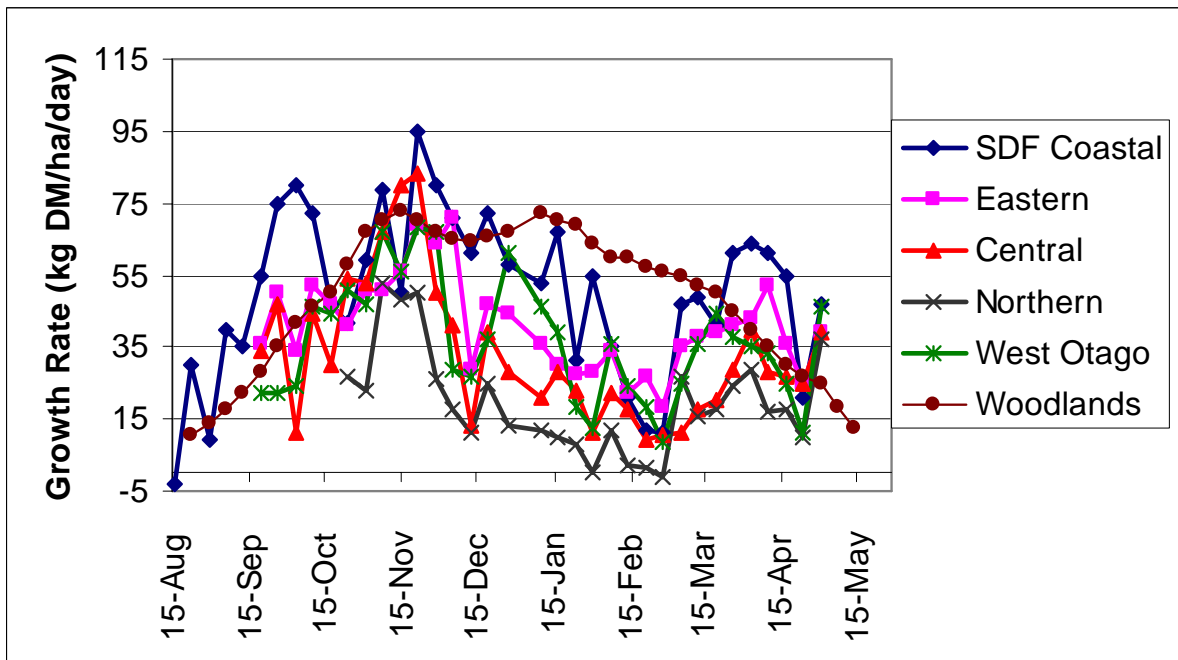
The demonstration farm is the only farm currently not feeding supplement.

Farm Summary

	Demo Farm	Eastern	Central	Northern	West Otago
Average cover (kg DM/ha)	2443	2094	1717	1714	1933
Rotation length (days)	50	44	28	40	30
Supplement (kg DM/cow)	0	1.9	3.8	5	4
Production (kg MS/cow)	1.32	1.35	1.37	1.11	1.35
Production (kg MS/ha)	3.3	4.1	3.9	2.3	3.4
Stocking rate (cows/ha)	2.5	3.06	2.88	2.09	2.67
N (kg/ha)	172	127	132	19	133
Soil temperature (°C)	10.4	10.6	11.8	10.5	11.2
Growth Rate (kg DM/day)*	47	39	39	37	46
Comments	TAD	TAD	16 hours	OAD	16 hours

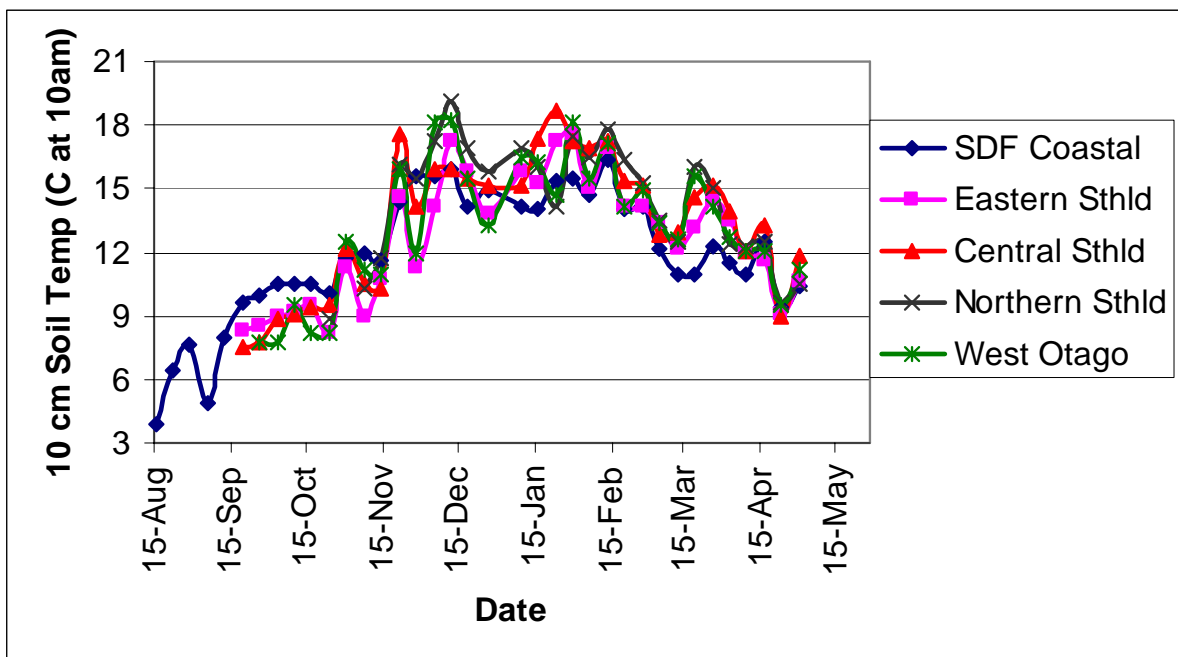
* Likely to include compensation for low covers measured last week in wet windy conditions

Pasture Growth Rates



NB the Woodlands data is the long-term average from mature pastures at Woodlands measured using enclosure cages.

Soil Temperature



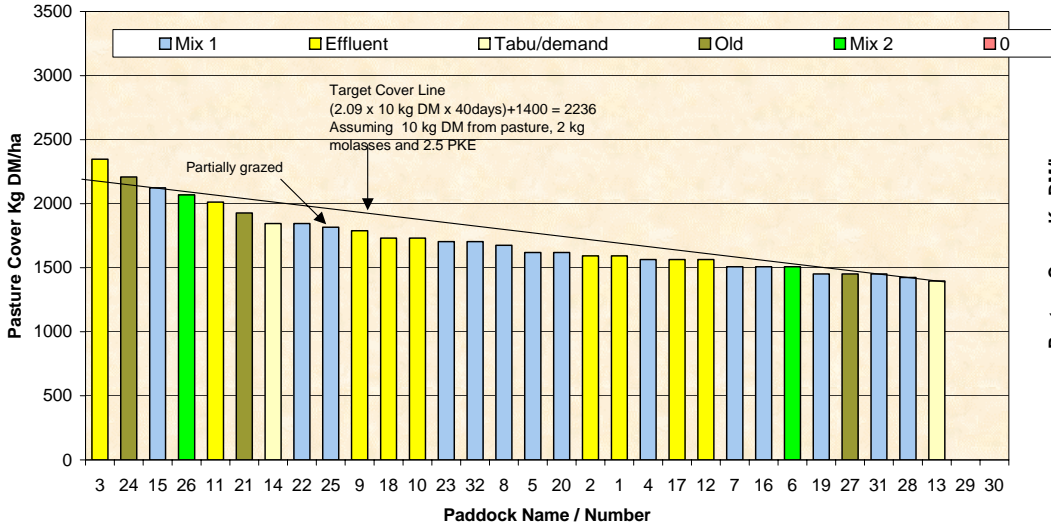
West Otago

Description	Date	RPM	% prot	% Lipid	% SSS	% NDF	% ADF	OMD	MJME/kg DM	%DM
Pdk 45	3 Oct	10.4	34.1	5.9	9.9	36.6	22.7	>85	12.4	14.2
Pdk 19	17Oct	13.6	28.1	4.8	11.8	41.7	24.1	>85	12.3	12.4
Pdk 29	17Oct	14.8	29.3	4.7	9.6	46.1	25.1	83.7	11.9	13.0
Pdk 21	31Oct	13.8	25.9	4.7	15.1	43.4	25.4	83.9	12.0	18.1
Pdk 35	31Oct	12.8	28.3	5.1	15.2	41.1	22.9	>85	12.4	17.9
Pdk 6	14Nov	22.4	20.6	4.1	16.9	44.8	24.6	81.0	11.9	15.6
Pdk 40	14Nov	24.6	20.6	4.4	19.4	44.1	24.2	83.9	12.2	15.7
Pdk 12	28Nov	18.0	23.7	3.8	16.9	46.4	24.9	84.9	12.6	20.1
Pdk 19	28Nov	17.6	21.8	4.5	16.7	41.6	20.3	>85	>12.7	18.6
Pdk 31	12Dec	14.6	25.3	4.5	14.8	45.6	24.8	79.5	11.8	18.4
Pdk 7	12Dec	13.6	22.1	4.2	11.1	54.6	28.6	70.7	10.8	19.0
Pdk 5	9 Jan	12.6	31.1	5.3	12.4	41.3	23.6	80.8	11.4	19.1
Pdk 28	9 Jan	17.0	28.7	5.2	10.9	42.3	25.3	78.7	11.1	17.9
Pdk 23	22Jan	12.8	31.5	5.2	8.3	44.3	27.0	76.5	10.8	19.3
Pdk 46	22Jan	10.4	15.7	3.7	8.9	56.2	34.3	56.6	8.3	33.9
Pdk 6	7 Feb	13.4	25.8	4.8	11.8	47.3	24.4	75.0	11.0	18.1
Pdk 12	21Feb	13.8	28.4	5.1	9.0	50.2	24.2	77.0	11.4	19.5
Pdk 21	21Feb	15.0	29.0	5.0	9.3	48.6	25.7	77.4	11.1	17.9
Pdk 23	5 Mar	10.4	30.5	5.2	10.5	48.2	25.4	76.6	11.0	17.9
Pdk 27	5 Mar	12.8	31.4	5.3	9.5	48.2	24.9	79.3	11.4	15.8
Pdk 11	18Mar	15.8	35.5	5.0	10.0	40.2	21.7	>85	12.6	12.8
Pdk 26	18Mar	15.4	31.1	4.6	10.5	48.2	22.6	84.3	12.4	16.8
Pdk 46	1 Apr	19.0	31.6	5.6	9.3	44.6	23.3	83.8	12.0	13.1
Pdk 32	1 Apr	14.5	33.8	5.9	8.5	41.5	22.3	84.5	12.0	13.7
Pdk 11	16Apr	17.8	29.6	4.8	13.9	34.4	24.0	84.3	12.1	13.0
Pdk 21	16Apr	17.4	30.6	5.3	12.4	39.5	24.0	84.8	12.1	13.6

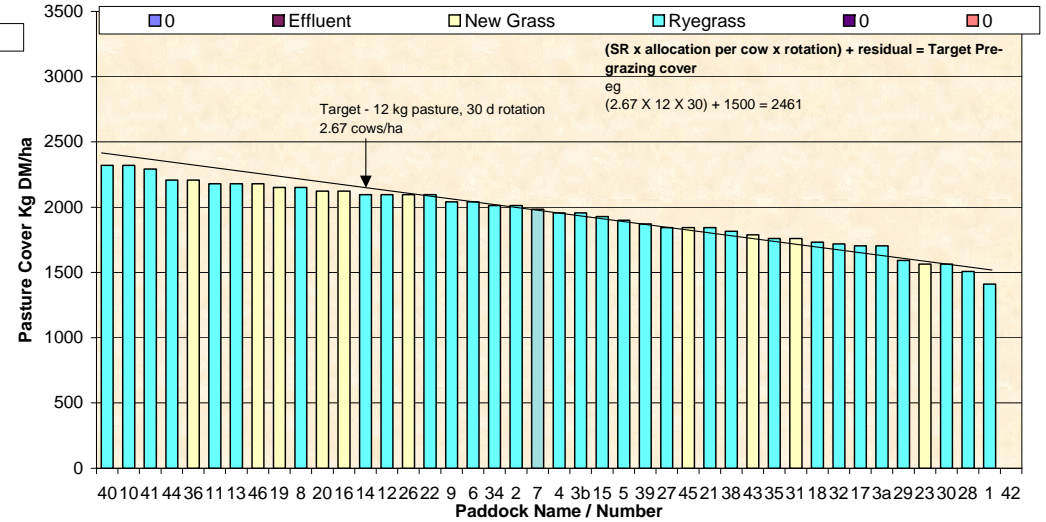
Northern Southland

Description	Date	RPM	% prot	% Lipid	% SSS	% NDF	% ADF	OMD	MJME/kg DM	%DM
Pdk 21	17Oct	14.4	32.4	4.7	9.2	41.3	24.3	84.9	12.2	13.4
Pdk 31	17Oct	13.8	32.6	5.5	8.6	38.9	24.3	>85	12.2	13.8
Pdk 15	31Oct	10.2	24.8	4.1	16.5	41.6	23.6	>85	12.4	14.0
Pdk 2	31Oct	10.4	27.5	5.2	18.1	41.7	23.8	>85	12.4	15.2
Pdk 18	14Nov	20.6	23.1	4.3	19.7	42.9	24.2	83.3	12.2	19.2
Pdk 22	14Nov	12.6	26.0	4.2	17.4	41.8	23.3	>85	>12.7	19.0
Pdk 7	28Nov	11.4	20.1	3.4	18.2	47.9	26.3	80.3	11.9	23.4
Pdk 8	28Nov	12.2	17.4	2.6	16.0	54.1	28.6	78.1	11.6	24.1
Pdk 18	12Dec	9.8	20.3	4.0	13.6	52.5	27.6	74.2	10.9	19.2
Pdk 4	12Dec	11.4	17.9	3.5	10.4	58.3	30.7	67.1	10.1	23.0
Pdk 22	9 Jan	8.8	25.4	4.4	9.9	46.3	26.8	74.6	10.7	24.2
Pdk 21	9 Jan	12.2	20.8	4.3	11.8	46.2	29.1	69.8	10.0	23.1
Pdk 21	22Jan	9.2	27.1	4.6	9.4	51.1	24.6	78.3	11.3	19.2
Pdk 22	7 Feb	8.0	18.1	3.4	9.3	57.6	32.4	62.2	9.3	36.8
Pdk 18	21Feb	7.6	21.8	4.7	10.0	54.1	26.0	69.1	10.2	26.4
Pdk 2	5 Mar	7.8	22.6	4.9	12.2	51.0	23.8	72.6	10.7	22.1
Pdk 16	18Mar	10.4	30.1	4.6	12.0	38.3	22.0	82.2	11.7	16.8
Pdk 25	18Mar	9.2	32.6	4.8	9.9	45.9	23.5	81.2	11.9	18.2
Pdk 6	1 Apr	13.2	25.6	4.4	11.7	46.4	25.0	77.7	11.1	15.4
Pdk 18	1 Apr	9.8	28.9	5.3	13.8	40.6	23.2	83.8	12.1	14.7
Pdk 27	16Apr	10.6	32.3	6.0	12.6	36.2	21.0	>85	12.9	16.2
Pdk 32	16Apr	14.2	25.0	4.2	14.6	41.5	25.5	77.7	11.0	18.0

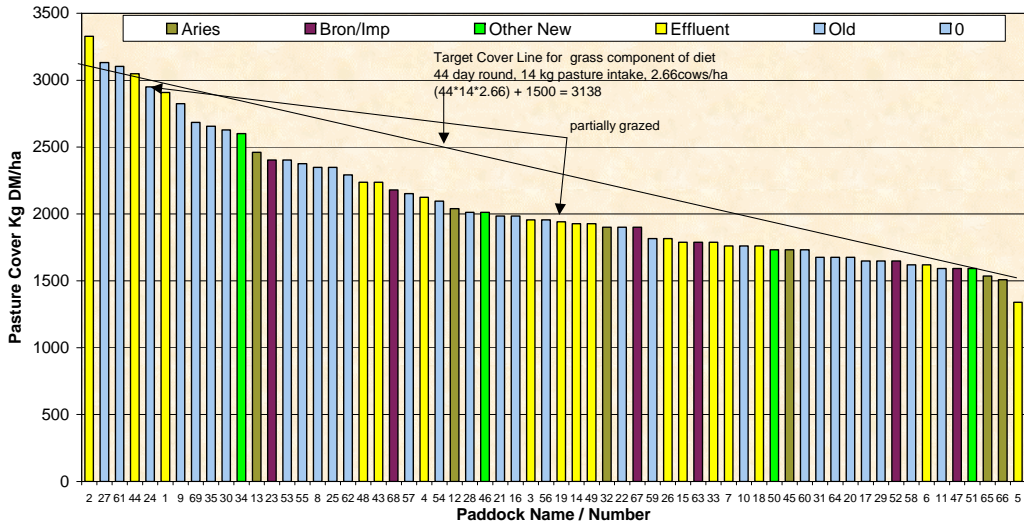
Farm Name Frel Dairy **Soil Temp:** 10.5 **30/04/2008** **Wedge Date**
 1714 **Average Farm Cover**
Feed Wedge for Farm Block - Milking 36.8 **Current Growth Rate**



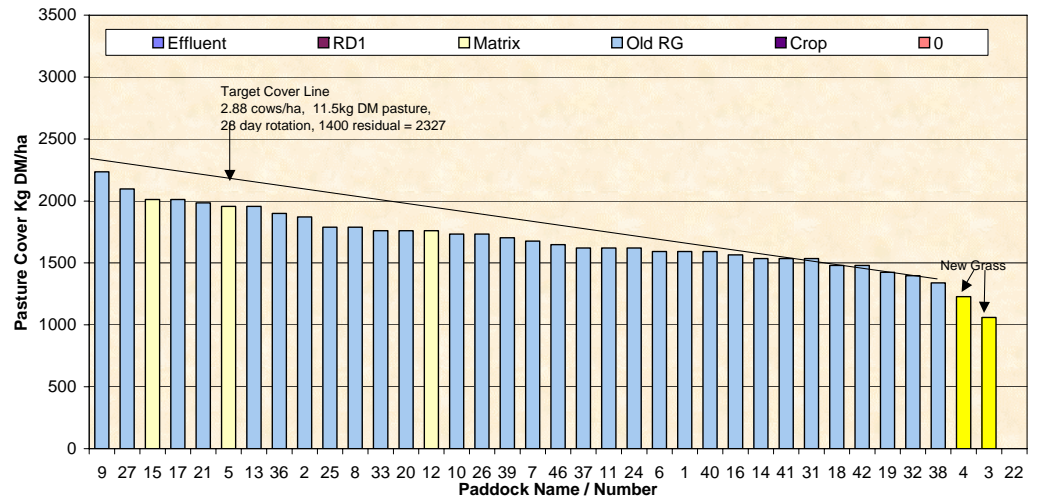
Farm Name Dave & Mel Goble **Soil Temp:** 11.2 **30/04/2008** **Wedge Date**
 1933 **Average Farm Cover**
Feed Wedge for Farm Block - Milking 46.3 **Current Growth Rate**



Farm Name Kevin & Debbie Hall **Soil Temp:** 10.6 **29/04/2008** **Wedge Date**
 2094 **Average Farm Cover**
Feed Wedge for Farm Block - Milking 39.1 **Current Growth Rate**



Farm Name George & Jose van der Poel **Soil Temp:** 11.8 **29/04/2008** **Wedge Date**
 1717 **Average Farm Cover**
Feed Wedge for Farm Block - Milking 38.6 **Current Growth Rate**



Southland Monitor Farm Project

Weekly Update – 23 Apr 08

General Comments

Cold wet weather and hail during the weekend has resulted in soil temperatures falling below 10 °C in all regions. Growth rates have also fallen considerably and only ranged from 11 to 25 kg DM/ha per day this week. Growth rate results from all regions are likely to be an under estimate of actual growth as the rain and strong southerly winds have flattened the pasture, which has affected plate meter readings especially on higher cover paddocks. The Eastern and Central farms are applying urea following the cows while the demonstration farm will commence Eco-N applications in the next fortnight.

Production was down in all regions, probably reflecting the cold conditions. The Central Southland farm has culled 21 cows from the herd while all cows on the Northern Southland farm are now being milked once a day. The West Otago farm has continued with 16 hour milking intervals.

Supplement feeding has continued at similar rates to last week. Neither the demonstration farm nor the West Otago farms are feeding supplements.

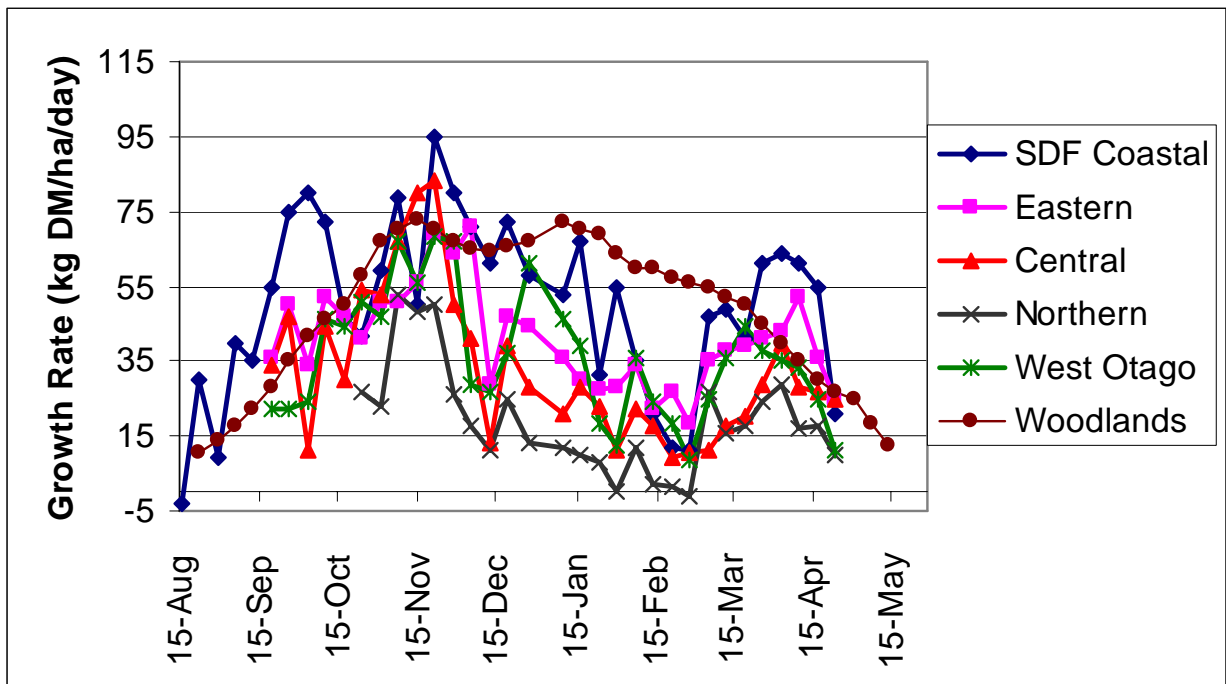
Results from pasture samples collected in mid April have been received (see tables below). Pasture dry matter percent has risen slightly on the early April samples with the range reported this week between 13 and 18%. Crude protein levels were high on all farms despite a wide range in the amount of nitrogen fertiliser that has been applied. Energy content ranged between 11.0 and 13.0 MJME/kg DM. Pasture samples from two farms recorded high lipid content at 6%.

Farm Summary

	Demo Farm	Eastern	Central	Northern	West Otago
Average cover (kg DM/ha)	2337	2070	1620	1537	1782
Rotation length (days)	45	44	24	36	24
Supplement (kg DM/cow)	0	1.1	3.5	3.5	-
Production (kg MS/cow)	1.27	1.39	1.52	1.22	1.41
Production (kg MS/ha)	3.2	4.12	4.63	2.69	3.79
Stocking rate (cows/ha)	2.5	3.05	2.88	2.11	2.68
N (kg/ha)	168	93	124	19	124
Soil temperature (°C)	9.4	9.1	9.0	9.6	9.5
Growth Rate (kg DM/day)*	21	25	25	10	11
Comments	Eco N applications starting			Now OAD milking	

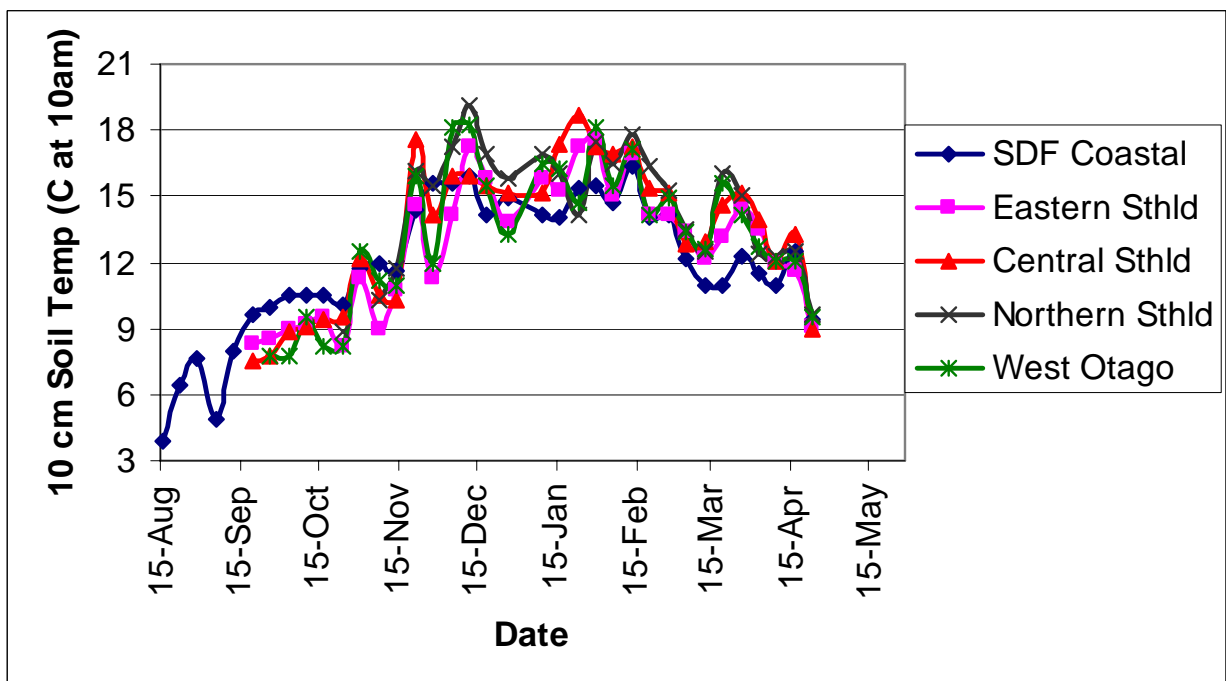
* Likely underestimated due to flattening of the pasture by the wind and rain

Pasture Growth Rates



NB the Woodlands data is the long-term average from mature pastures at Woodlands measured using enclosure cages.

Soil Temperature



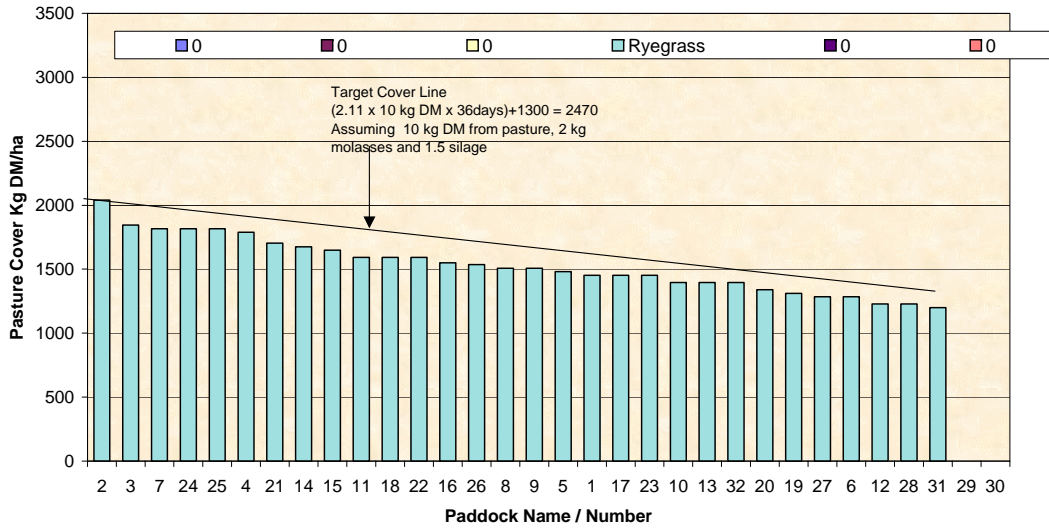
West Otago

Description	Date	RPM	% prot	% Lipid	% SSS	% NDF	% ADF	OMD	MJME/kg DM	%DM
Pdk 45	3 Oct	10.4	34.1	5.9	9.9	36.6	22.7	>85	12.4	14.2
Pdk 19	17Oct	13.6	28.1	4.8	11.8	41.7	24.1	>85	12.3	12.4
Pdk 29	17Oct	14.8	29.3	4.7	9.6	46.1	25.1	83.7	11.9	13.0
Pdk 21	31Oct	13.8	25.9	4.7	15.1	43.4	25.4	83.9	12.0	18.1
Pdk 35	31Oct	12.8	28.3	5.1	15.2	41.1	22.9	>85	12.4	17.9
Pdk 6	14Nov	22.4	20.6	4.1	16.9	44.8	24.6	81.0	11.9	15.6
Pdk 40	14Nov	24.6	20.6	4.4	19.4	44.1	24.2	83.9	12.2	15.7
Pdk 12	28Nov	18.0	23.7	3.8	16.9	46.4	24.9	84.9	12.6	20.1
Pdk 19	28Nov	17.6	21.8	4.5	16.7	41.6	20.3	>85	>12.7	18.6
Pdk 31	12Dec	14.6	25.3	4.5	14.8	45.6	24.8	79.5	11.8	18.4
Pdk 7	12Dec	13.6	22.1	4.2	11.1	54.6	28.6	70.7	10.8	19.0
Pdk 5	9 Jan	12.6	31.1	5.3	12.4	41.3	23.6	80.8	11.4	19.1
Pdk 28	9 Jan	17.0	28.7	5.2	10.9	42.3	25.3	78.7	11.1	17.9
Pdk 23	22Jan	12.8	31.5	5.2	8.3	44.3	27.0	76.5	10.8	19.3
Pdk 46	22Jan	10.4	15.7	3.7	8.9	56.2	34.3	56.6	8.3	33.9
Pdk 6	7 Feb	13.4	25.8	4.8	11.8	47.3	24.4	75.0	11.0	18.1
Pdk 12	21Feb	13.8	28.4	5.1	9.0	50.2	24.2	77.0	11.4	19.5
Pdk 21	21Feb	15.0	29.0	5.0	9.3	48.6	25.7	77.4	11.1	17.9
Pdk 23	5 Mar	10.4	30.5	5.2	10.5	48.2	25.4	76.6	11.0	17.9
Pdk 27	5 Mar	12.8	31.4	5.3	9.5	48.2	24.9	79.3	11.4	15.8
Pdk 11	18Mar	15.8	35.5	5.0	10.0	40.2	21.7	>85	12.6	12.8
Pdk 26	18Mar	15.4	31.1	4.6	10.5	48.2	22.6	84.3	12.4	16.8
Pdk 46	1 Apr	19.0	31.6	5.6	9.3	44.6	23.3	83.8	12.0	13.1
Pdk 32	1 Apr	14.5	33.8	5.9	8.5	41.5	22.3	84.5	12.0	13.7
Pdk 11	16Apr	17.8	29.6	4.8	13.9	34.4	24.0	84.3	12.1	13.0
Pdk 21	16Apr	17.4	30.6	5.3	12.4	39.5	24.0	84.8	12.1	13.6

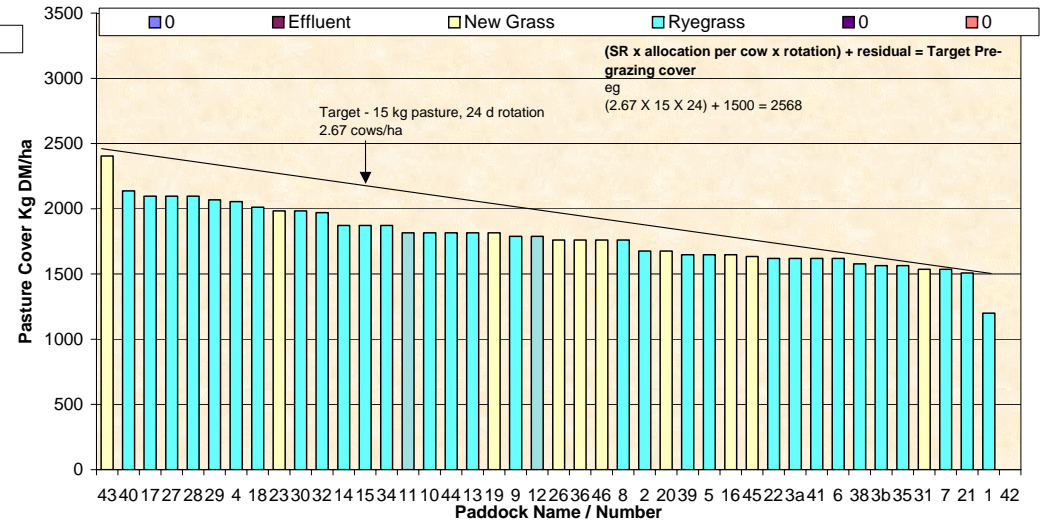
Northern Southland

Description	Date	RPM	% prot	% Lipid	% SSS	% NDF	% ADF	OMD	MJME/kg DM	%DM
Pdk 21	17Oct	14.4	32.4	4.7	9.2	41.3	24.3	84.9	12.2	13.4
Pdk 31	17Oct	13.8	32.6	5.5	8.6	38.9	24.3	>85	12.2	13.8
Pdk 15	31Oct	10.2	24.8	4.1	16.5	41.6	23.6	>85	12.4	14.0
Pdk 2	31Oct	10.4	27.5	5.2	18.1	41.7	23.8	>85	12.4	15.2
Pdk 18	14Nov	20.6	23.1	4.3	19.7	42.9	24.2	83.3	12.2	19.2
Pdk 22	14Nov	12.6	26.0	4.2	17.4	41.8	23.3	>85	>12.7	19.0
Pdk 7	28Nov	11.4	20.1	3.4	18.2	47.9	26.3	80.3	11.9	23.4
Pdk 8	28Nov	12.2	17.4	2.6	16.0	54.1	28.6	78.1	11.6	24.1
Pdk 18	12Dec	9.8	20.3	4.0	13.6	52.5	27.6	74.2	10.9	19.2
Pdk 4	12Dec	11.4	17.9	3.5	10.4	58.3	30.7	67.1	10.1	23.0
Pdk 22	9 Jan	8.8	25.4	4.4	9.9	46.3	26.8	74.6	10.7	24.2
Pdk 21	9 Jan	12.2	20.8	4.3	11.8	46.2	29.1	69.8	10.0	23.1
Pdk 21	22Jan	9.2	27.1	4.6	9.4	51.1	24.6	78.3	11.3	19.2
Pdk 22	7 Feb	8.0	18.1	3.4	9.3	57.6	32.4	62.2	9.3	36.8
Pdk 18	21Feb	7.6	21.8	4.7	10.0	54.1	26.0	69.1	10.2	26.4
Pdk 2	5 Mar	7.8	22.6	4.9	12.2	51.0	23.8	72.6	10.7	22.1
Pdk 16	18Mar	10.4	30.1	4.6	12.0	38.3	22.0	82.2	11.7	16.8
Pdk 25	18Mar	9.2	32.6	4.8	9.9	45.9	23.5	81.2	11.9	18.2
Pdk 6	1 Apr	13.2	25.6	4.4	11.7	46.4	25.0	77.7	11.1	15.4
Pdk 18	1 Apr	9.8	28.9	5.3	13.8	40.6	23.2	83.8	12.1	14.7
Pdk 27	16Apr	10.6	32.3	6.0	12.6	36.2	21.0	>85	12.9	16.2
Pdk 32	16Apr	14.2	25.0	4.2	14.6	41.5	25.5	77.7	11.0	18.0

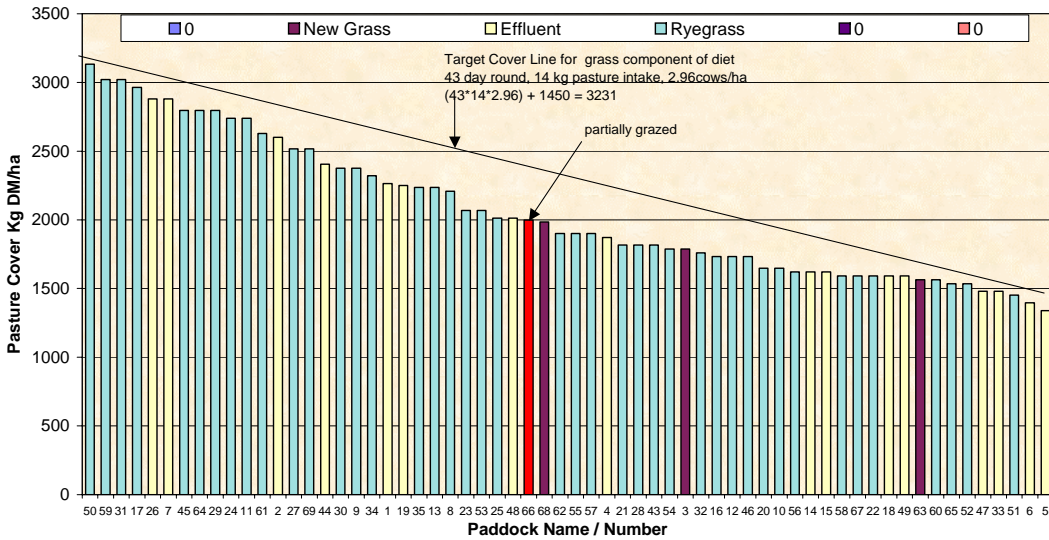
Farm Name Frel Dairy Soil Temp: 9.6 23/04/2008 Wedge Date
 Feed Wedge for Farm Block - Milking 1537 Average Farm Cover
 10.4 Current Growth Rate



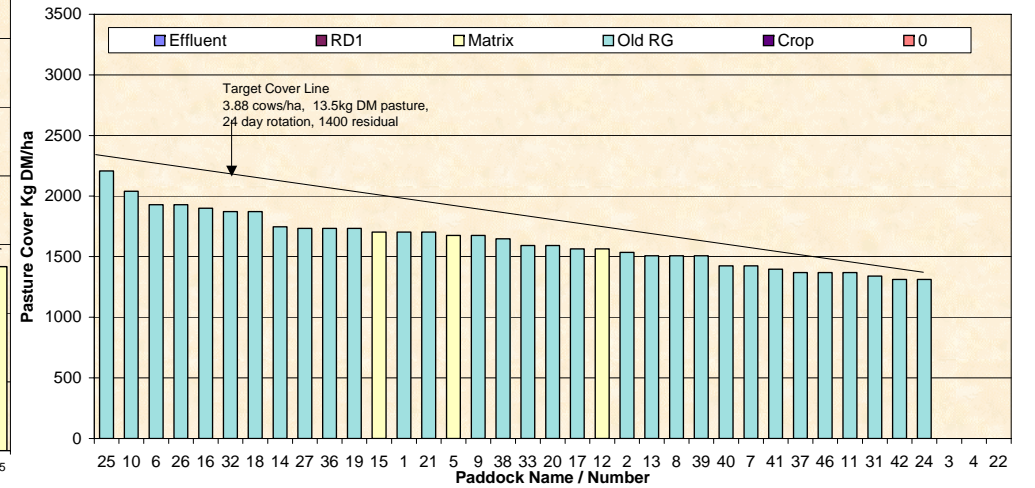
Farm Name Dave & Mel Goble Soil Temp: 9.6 23/04/2008 Wedge Date
 Feed Wedge for Farm Block - Milking 1782 Average Farm Cover
 11.1 Current Growth Rate



Farm Name Kevin & Debbie Hall Soil Temp: 9.1 22/04/2008 Wedge Date
 Feed Wedge for Farm Block - Milking 2070 Average Farm Cover
 24.9 Current Growth Rate



Farm Name George & Jose van der Poel Soil Temp: 9.0 22/04/2008 Wedge Date
 Feed Wedge for Farm Block - Milking 1620 Average Farm Cover
 25.2 Current Growth Rate



Southland Monitor Farm Project

Weekly Update – 16 Apr 08

General Comments

Soil temperatures have fluctuated this week with the range now between 11.6 to 13.3 °C range. Growth across the regions this week has either held (Central and Northern) or declined (Demo, Eastern, West Otago). Growth rates ranged from 18 to 55 kg DM/ha per day, a slightly narrower range than that observed last week (17 to 61). The demonstration farm continues to have the highest growth rate.

Production has held at similar levels to last week. The West Otago farm has continued with 16 hour milking intervals while all other farms are still milking twice a day.

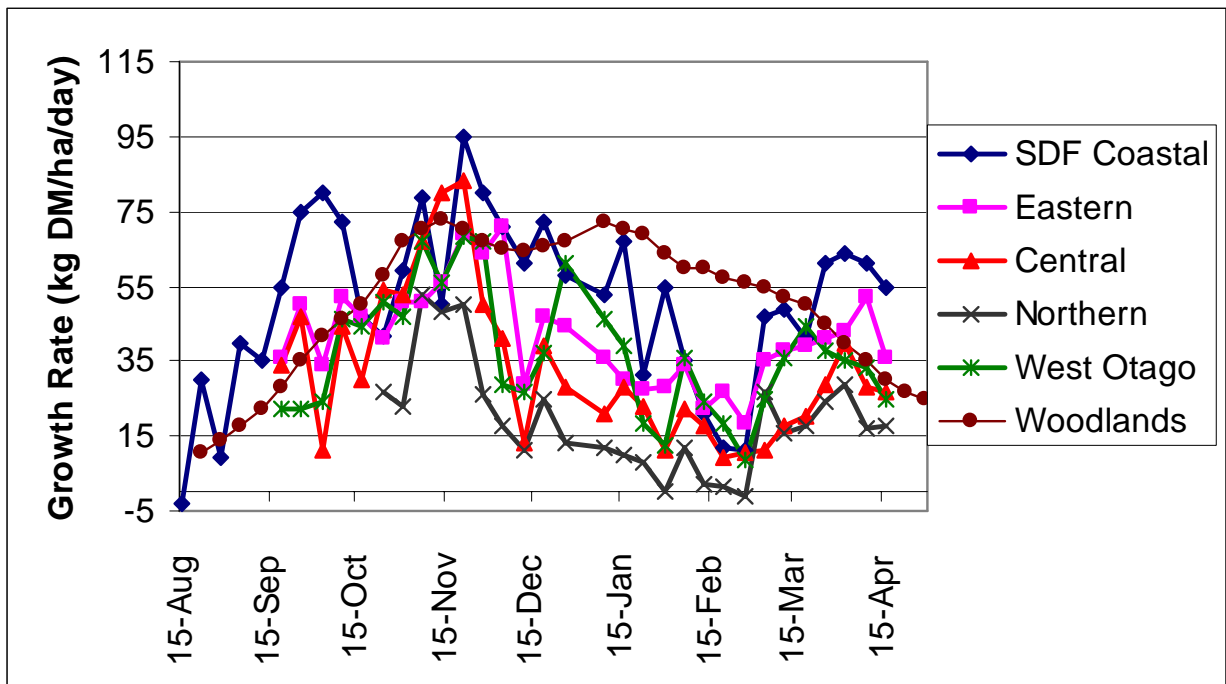
Supplement feeding has continued at similar rates to last week. Neither the demonstration farm nor the West Otago farms are feeding supplements.

Results from pasture samples collected in at the beginning of April have been received (see tables below). Pasture dry matter percent has continued to decline with the range reported between 10.6 and 16.6%. Below a dry matter percentage of 14% it can be difficult to achieve a high DM intake of grazing cows because of the time taken to consume and process the low DM grass. To consume 15 kg DM of a pasture that is only 13% DM requires the cow to harvest and process 115 kg fresh weight of pasture. Crude protein levels were high on all farms despite a wide range in the amount of nitrogen fertiliser that has been applied. The were however lowest on the Northern Southland farm which has only had wintering barn manure applied to about 20% of the farm. Energy content ranged between 11.1 and 12.7 MJME/kg DM.

Farm Summary

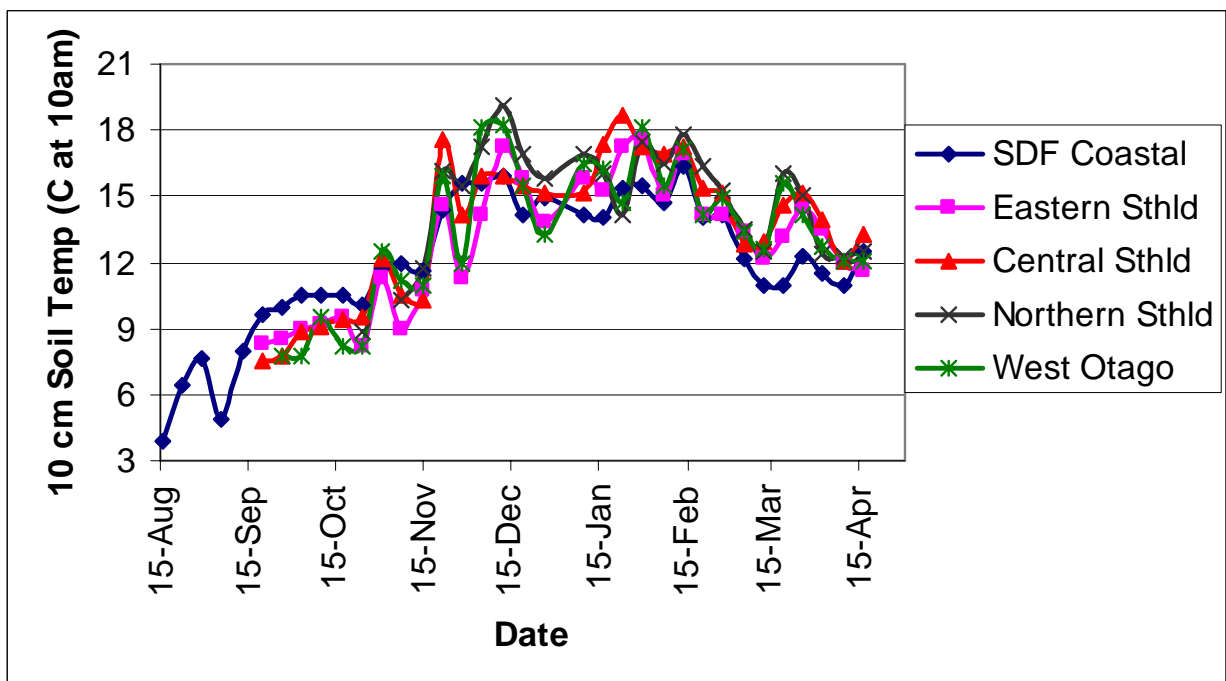
	Demo Farm	Eastern	Central	Northern	West Otago
Average cover (kg DM/ha)	2550	2174	1692	1596	1955
Rotation length (days)	51	43	24	37	25
Supplement (kg DM/cow)	0	1	2.5	2	0
Production (kg MS/cow)	1.35	1.45	1.59	1.38	1.39
Production (kg MS/ha)	3.65	4.31	4.85	3.03	3.71
Stocking rate (cows/ha)	2.71	2.96	3.05	2.2	2.68
N (kg/ha)	154	123	116	19*	124
Soil temperature (°C)	12.5	11.6	13.3	12.5	12.1
Growth Rate (kg DM/day)	55	36	27	18	25
Comments					

Pasture Growth Rates



NB the Woodlands data is the long-term average from mature pastures at Woodlands measured using enclosure cages.

Soil Temperature



Pasture Quality

NOTE: We sample the paddocks immediately in front of the milkers, to height of 3.5cm (7 clicks on the rising plate meter). The RPM data in the table is the pre-grazing clicks recorded on the day of sampling.

Eastern Southland

Description	Date	RPM	% prot	% Lipid	% SSS	% NDF	% ADF	OMD	MJME/ kg DM	%DM
Pdk 33	2 Oct	18.2	27.6	5.6	12.8	40.8	23.4	82.9	12.1	15.7
Pdk 34	16Oct	16.8	22.4	4.4	16.9	41.3	25.0	81.6	11.8	18.0
Pdk 55	16Oct	12.8	26.5	4.5	11.7	46.2	26.2	81.1	11.6	15.4
Pdk 25	30 Oct	14.6	26.0	4.1	15.0	43.2	24.0	>85	12.7	19.5
Pdk 29	30 Oct	11.6	23.3	4.3	16.4	40.4	22.2	>85	12.5	17.3
Pdk 33	13Nov	12.8	28.5	4.4	16.4	42.6	22.9	>85	12.6	16.7
Pdk 69	13Nov	14.6	23.6	3.7	15.1	45.2	24.7	82.5	12.2	17.1
Pdk 47	27Nov	16.2	22.6	3.8	15.8	47.1	25.3	84.7	12.4	14.1
Pdk 26	27Nov	18.0	20.1	3.4	14.3	50.6	26.5	80.2	11.8	15.7
Pdk 33	11Dec	17.6	24.9	4.4	14.4	45.8	24.6	80.7	11.8	13.2
Pdk 12	11Dec	13.6	23.9	4.3	14.8	44.3	26.2	78.3	11.4	14.6
Pdk 46	8 Jan	13.0	33.6	5.7	7.1	34.5	25.0	79.7	10.7	14.0
Pdk 53	8 Jan	16.6	24.3	3.9	9.4	51.4	27.2	77.7	11.0	16.6
Pdk 64	22 Jan	15.8	29.5	4.6	8.9	45.7	25.7	79.3	10.9	12.8
Pdk 34	22 Jan	12.6	29.5	5.5	8.1	45.6	27.4	76.4	10.5	13.5
Pdk 60	6 Feb	13.2	23.7	4.1	10.3	52.6	24.9	75.6	11.4	22.3
Pdk 44	6 Feb	13.4	26.7	5.1	14.8	43.9	23.1	81.1	11.9	20.6
Pdk 47	20 Feb	11.0	28.6	5.1	12.1	44.8	24.4	79.4	11.4	19.8
Pdk 30	20Feb	12.2	28.1	4.6	10.4	49.9	26.3	75.5	10.8	22.3
Pdk 65	4 Mar	12.6	28.6	4.7	13.3	47.0	23.9	82.3	12.0	18.3
Pdk 57	4 Mar	12.4	31.9	4.6	10.2	51.2	22.1	84.3	12.3	16.8
Pdk 69	17Mar	13.6	27.9	4.7	9.8	49.2	25.3	81.1	11.6	14.1
Pdk 55	1 Apr	11.2	31.3	4.6	6.1	54.3	26.7	80.0	11.4	12.4
Pdk 68	1 Apr	18.0	31.6	5.0	12.3	40.8	25.5	>85	12.2	10.6

West Otago

Description	Date	RPM	% prot	% Lipid	% SSS	% NDF	% ADF	OMD	MJME/kg DM	%DM
Pdk 45	3 Oct	10.4	34.1	5.9	9.9	36.6	22.7	>85	12.4	14.2
Pdk 19	17Oct	13.6	28.1	4.8	11.8	41.7	24.1	>85	12.3	12.4
Pdk 29	17Oct	14.8	29.3	4.7	9.6	46.1	25.1	83.7	11.9	13.0
Pdk 21	31Oct	13.8	25.9	4.7	15.1	43.4	25.4	83.9	12.0	18.1
Pdk 35	31Oct	12.8	28.3	5.1	15.2	41.1	22.9	>85	12.4	17.9
Pdk 6	14Nov	22.4	20.6	4.1	16.9	44.8	24.6	81.0	11.9	15.6
Pdk 40	14Nov	24.6	20.6	4.4	19.4	44.1	24.2	83.9	12.2	15.7
Pdk 12	28Nov	18.0	23.7	3.8	16.9	46.4	24.9	84.9	12.6	20.1
Pdk 19	28Nov	17.6	21.8	4.5	16.7	41.6	20.3	>85	>12.7	18.6
Pdk 31	12Dec	14.6	25.3	4.5	14.8	45.6	24.8	79.5	11.8	18.4
Pdk 7	12Dec	13.6	22.1	4.2	11.1	54.6	28.6	70.7	10.8	19.0
Pdk 5	9 Jan	12.6	31.1	5.3	12.4	41.3	23.6	80.8	11.4	19.1
Pdk 28	9 Jan	17.0	28.7	5.2	10.9	42.3	25.3	78.7	11.1	17.9
Pdk 23	22Jan	12.8	31.5	5.2	8.3	44.3	27.0	76.5	10.8	19.3
Pdk 46	22Jan	10.4	15.7	3.7	8.9	56.2	34.3	56.6	8.3	33.9
Pdk 6	7 Feb	13.4	25.8	4.8	11.8	47.3	24.4	75.0	11.0	18.1
Pdk 12	21Feb	13.8	28.4	5.1	9.0	50.2	24.2	77.0	11.4	19.5
Pdk 21	21Feb	15.0	29.0	5.0	9.3	48.6	25.7	77.4	11.1	17.9
Pdk 23	5 Mar	10.4	30.5	5.2	10.5	48.2	25.4	76.6	11.0	17.9
Pdk 27	5 Mar	12.8	31.4	5.3	9.5	48.2	24.9	79.3	11.4	15.8
Pdk 11	18Mar	15.8	35.5	5.0	10.0	40.2	21.7	>85	12.6	12.8
Pdk 26	18Mar	15.4	31.1	4.6	10.5	48.2	22.6	84.3	12.4	16.8
Pdk 46	1 Apr	19.0	31.6	5.6	9.3	44.6	23.3	83.8	12.0	13.1
Pdk 32	1 Apr	14.5	33.8	5.9	8.5	41.5	22.3	84.5	12.0	13.7

Northern Southland

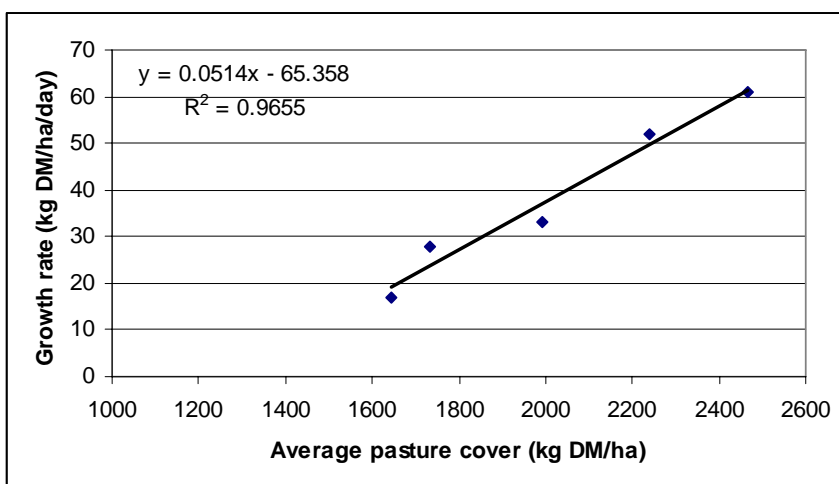
Description	Date	RPM	% prot	% Lipid	% SSS	% NDF	% ADF	OMD	MJME/kg DM	%DM
Pdk 21	17Oct	14.4	32.4	4.7	9.2	41.3	24.3	84.9	12.2	13.4
Pdk 31	17Oct	13.8	32.6	5.5	8.6	38.9	24.3	>85	12.2	13.8
Pdk 15	31Oct	10.2	24.8	4.1	16.5	41.6	23.6	>85	12.4	14.0
Pdk 2	31Oct	10.4	27.5	5.2	18.1	41.7	23.8	>85	12.4	15.2
Pdk 18	14Nov	20.6	23.1	4.3	19.7	42.9	24.2	83.3	12.2	19.2
Pdk 22	14Nov	12.6	26.0	4.2	17.4	41.8	23.3	>85	>12.7	19.0
Pdk 7	28Nov	11.4	20.1	3.4	18.2	47.9	26.3	80.3	11.9	23.4
Pdk 8	28Nov	12.2	17.4	2.6	16.0	54.1	28.6	78.1	11.6	24.1
Pdk 18	12Dec	9.8	20.3	4.0	13.6	52.5	27.6	74.2	10.9	19.2
Pdk 4	12Dec	11.4	17.9	3.5	10.4	58.3	30.7	67.1	10.1	23.0
Pdk 22	9 Jan	8.8	25.4	4.4	9.9	46.3	26.8	74.6	10.7	24.2
Pdk 21	9 Jan	12.2	20.8	4.3	11.8	46.2	29.1	69.8	10.0	23.1
Pdk 21	22Jan	9.2	27.1	4.6	9.4	51.1	24.6	78.3	11.3	19.2
Pdk 22	7 Feb	8.0	18.1	3.4	9.3	57.6	32.4	62.2	9.3	36.8
Pdk 18	21Feb	7.6	21.8	4.7	10.0	54.1	26.0	69.1	10.2	26.4
Pdk 2	5 Mar	7.8	22.6	4.9	12.2	51.0	23.8	72.6	10.7	22.1
Pdk 16	18Mar	10.4	30.1	4.6	12.0	38.3	22.0	82.2	11.7	16.8
Pdk 25	18Mar	9.2	32.6	4.8	9.9	45.9	23.5	81.2	11.9	18.2
Pdk 6	1 Apr	13.2	25.6	4.4	11.7	46.4	25.0	77.7	11.1	15.4
Pdk 18	1 Apr	9.8	28.9	5.3	13.8	40.6	23.2	83.8	12.1	14.7

Southland Monitor Farm Project

Weekly Update – 9 Apr 08

General Comments

Soil temperatures have continued to decline this week with temperatures now in the 11.0 to 12.3 °C range. Growth has been variable across the region this week. Eastern Southland continued to see an increase in growth rate while the other 4 regions experienced a decline in growth. Growth rates ranged from 17 to 61 kg DM/ha per day. Growth rate was very strongly correlated with average pasture cover (Figure 1) such that for every 100 kg increase in average pasture cover, growth rate increased by 6 kg DM/ha/day. This demonstrates the importance of ensuring you are managing your grazing to ensure paddocks are not overgrazed and average pasture cover is maintained.



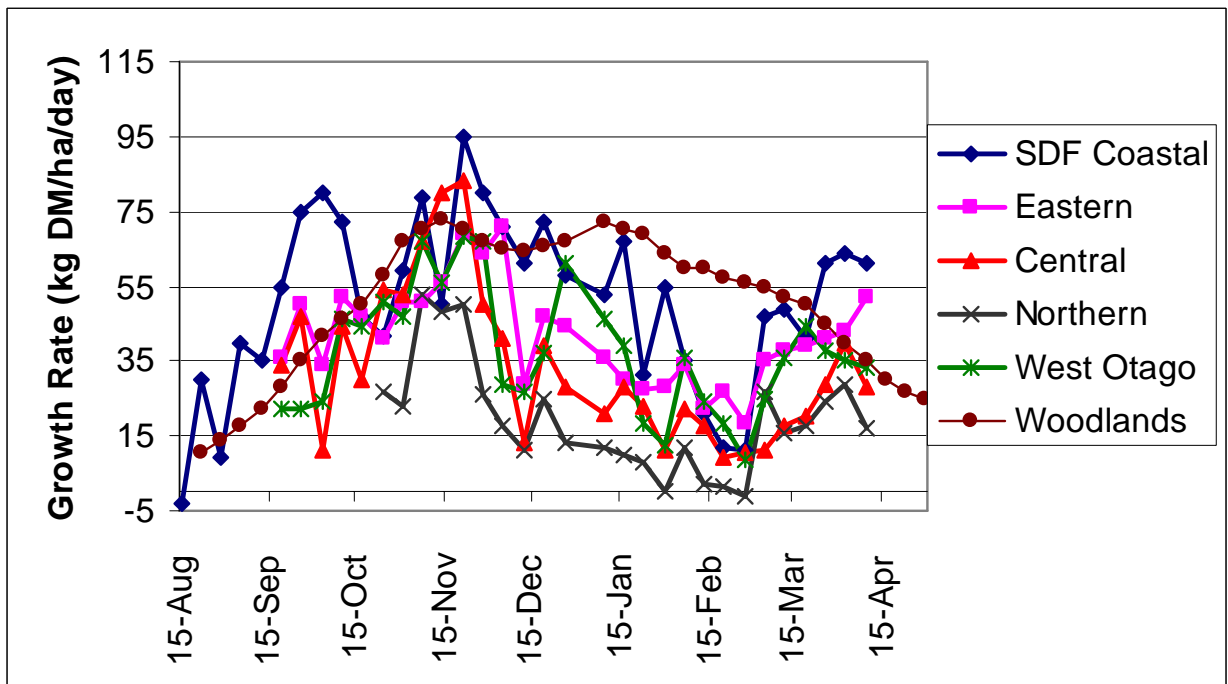
The amount of supplement being offered has continued to decline with the Central Southland farm feeding the most at 2.75 kg DM/cow/day.

Results from pasture samples collected in mid March have been received (see tables below). Pasture dry matter percent has declined considerably from the early March sample with the range recorded between 12.8 and 18%. Crude protein levels were high on all farms despite a wide range in the amount of nitrogen fertiliser that has been applied. Energy content ranged between 11.2 and 12.7 MJME/kg DM.

Farm Summary

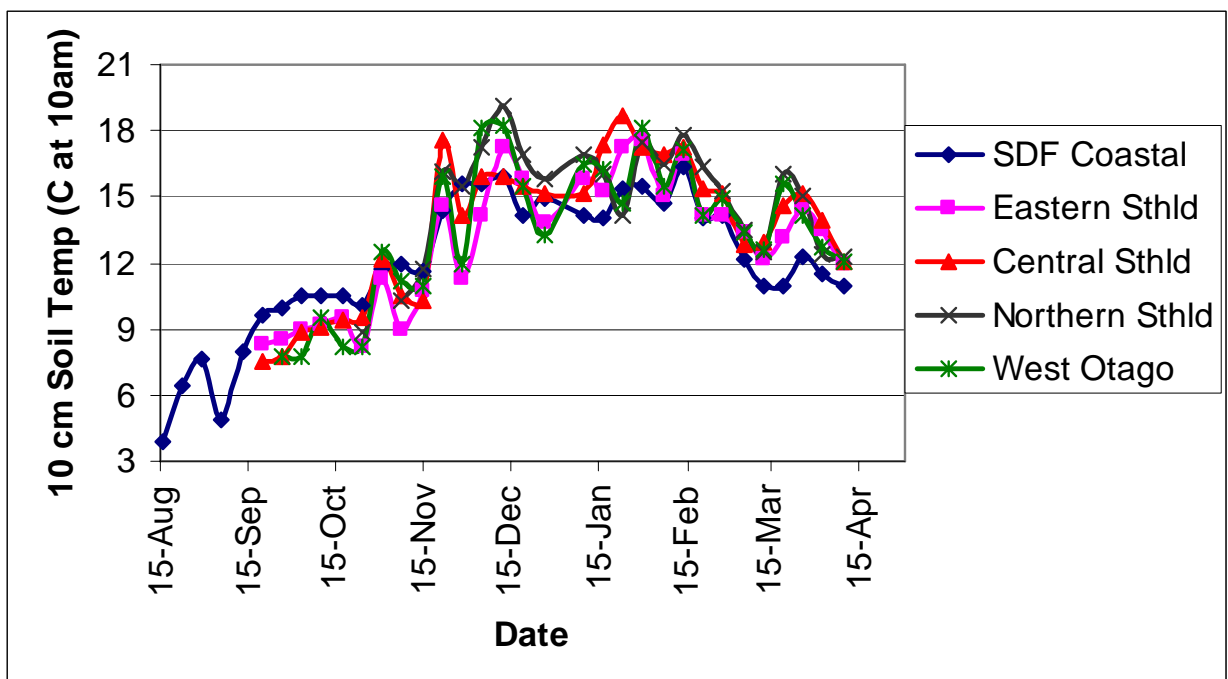
	Demo Farm	Eastern	Central	Northern	West Otago
Average cover (kg DM/ha)	2466	2238	1733	1643	1992
Rotation length (days)	41	44	24	41	26
Supplement (kg DM/cow)	0	1.8	2.75	2	0
Production (kg MS/cow)	1.32	1.49	1.55	1.42	1.41
Production (kg MS/ha)	3.6	4.41	4.72	3.12	3.79
Stocking rate (cows/ha)	2.72	2.96	3.05	2.2	2.68
N (kg/ha)	154	123	116	19*	124
Soil temperature (°C)	11.0	11.9	12.1	12.3	12.1
Growth Rate (kg DM/day)	64	52	28	17	33
Comments					

Pasture Growth Rates

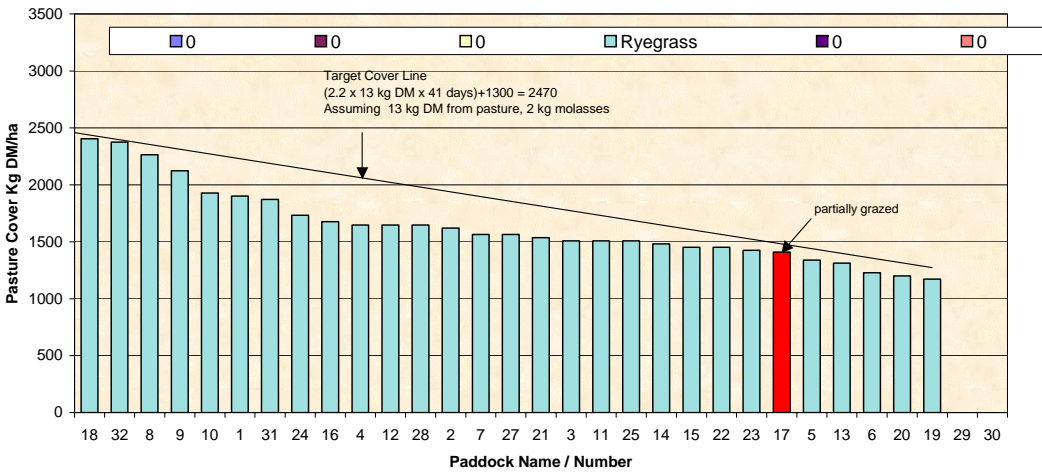


NB the Woodlands data is the long-term average from mature pastures at Woodlands measured using enclosure cages.

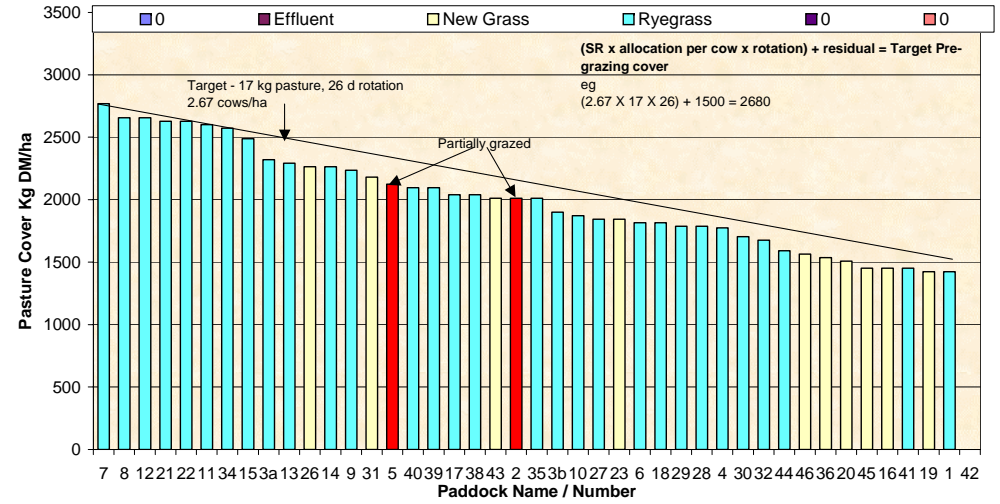
Soil Temperature



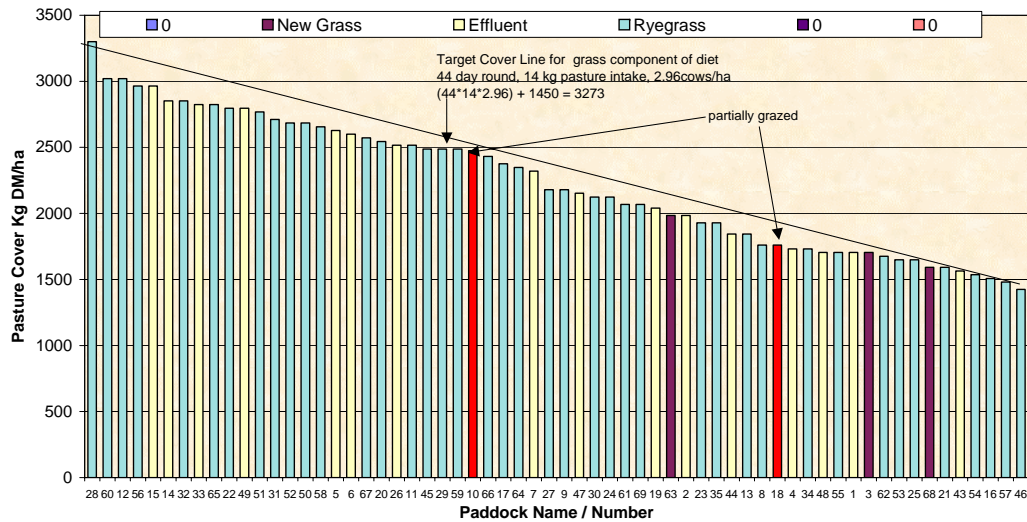
Farm Name: Frei Dairy Soil Temp: 12.3 09/04/2008 Wedge Date: 1643
 Feed Wedge for Farm Block - Milking Average Farm Cover: 17.3 Current Growth Rate: 3.6



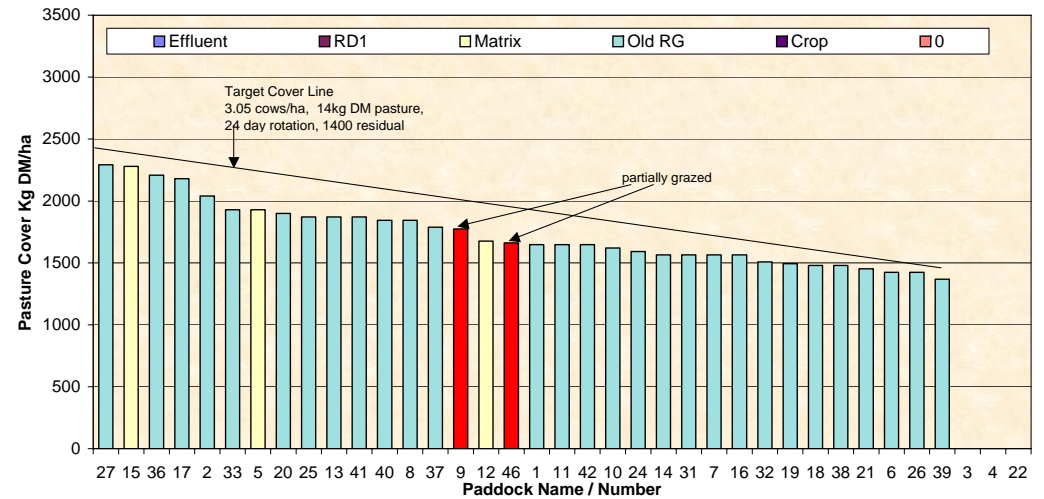
Farm Name: Dave & Mel Goble Soil Temp: 12.1 09/04/2008 Wedge Date: 1992
 Feed Wedge for Farm Block - Milking Average Farm Cover: 32.6 Current Growth Rate: 3.6



Farm Name: Kevin & Debbie Hall Soil Temp: 11.9 08/04/2008 Wedge Date: 2238
 Feed Wedge for Farm Block - Milking Average Farm Cover: 51.7 Current Growth Rate: 3.6



Farm Name: George & Jose van der Poel Soil Temp: 12.1 08/04/2008 Wedge Date: 1733
 Feed Wedge for Farm Block - Milking Average Farm Cover: 27.9 Current Growth Rate: 3.6



Southland Monitor Farm Project

Weekly Update – 1 Apr 08

General Comments

Soil temperatures have declined in all regions this week and now range between 12.4 to 13.9 °C. Growth has continued to increase in all regions except West Otago which eased again to 35 kg/ha/day (down from 38 kg/ha/day last week). There is considerable range in growth rates between the regions with Coastal Southland recording the highest growth and Northern Southland the least. The amount of supplement being offered is declining as pasture growth on farms nears demand. There are still some deficits in the feed wedge for Eastern, Central and Northern Southland so supplementary feeding is continuing. To meet the DM intake demands totally from pasture would require growth rates between 45 and 52 kg DM/ha/day, depending on the stocking rate of the farm.

The Northern Southland farm has applied winter tunnelhouse manure to 17% of the farm. As this area is now not available to the milkers the stocking rate has increased to 2.6 cows/ha on the rest of the milking platform.

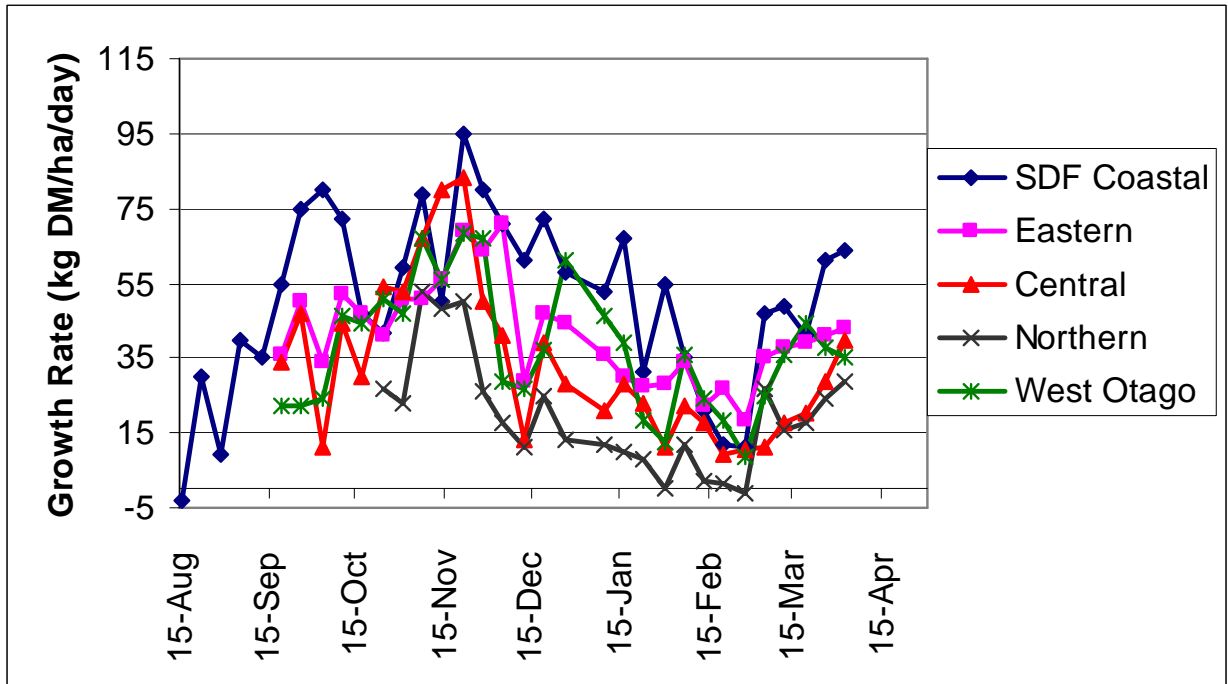
Farm Summary

	Demo Farm	Eastern	Central	Northern	West Otago
Average cover (kg DM/ha)	2539	2137	1743	1707	2047
Rotation length (days)	41	42	24	39	26
Supplement (kg DM/cow)	0	2	3	7	0
Production (kg MS/cow)	1.34	1.46	1.52	1.45	1.52
Production (kg MS/ha)	3.6	4.5	4.6	3.8	4.1
Stocking rate (cows/ha)	2.69	3.06	3.05	2.59#	2.67
N (kg/ha)	154	123	116	19*	124
Soil temperature (°C)	11.5	13.5	13.9	12.4	12.7
Growth Rate (kg DM/day)	64	43	40.0	28.7	35
Comments		Feeding meal & silage	Feeding pasture silage & meal	Feeding silage, PKE & molasses	

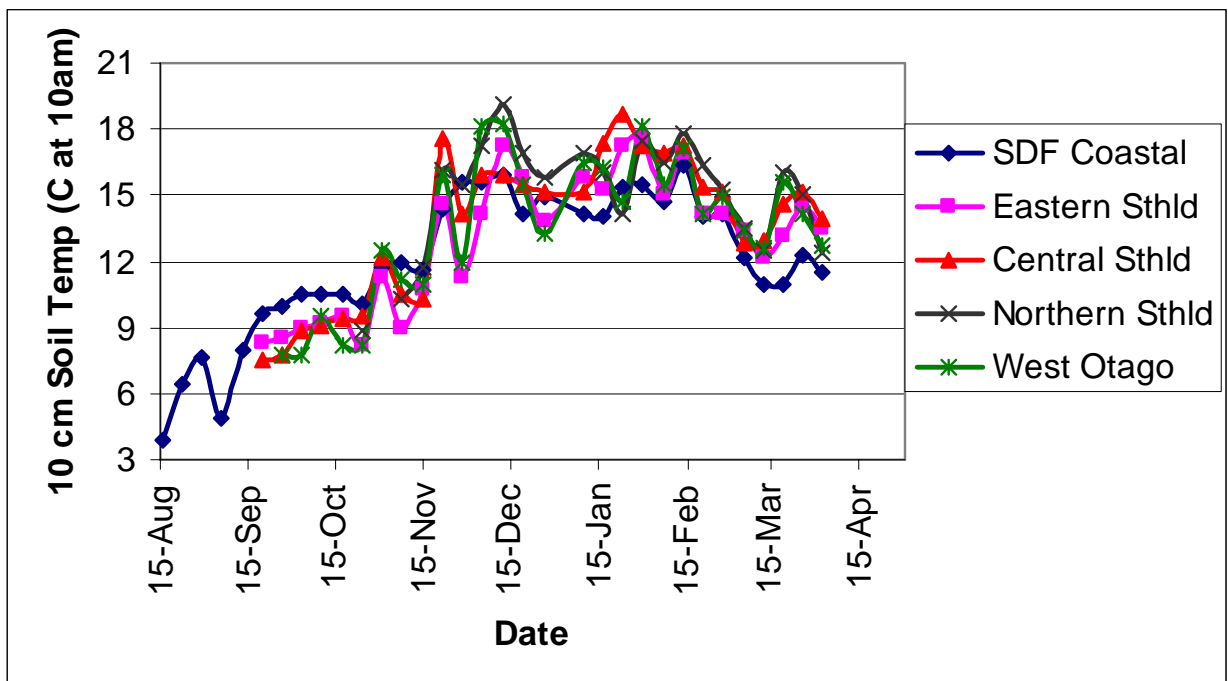
area available for milkers is now only 104 ha (139 total) due to winter cropping and pasture renovation

* manure (1.5 years old) from the wintering tunnel house has been applied to 17% of the farm with 7% of this area already cultivated for regressing.

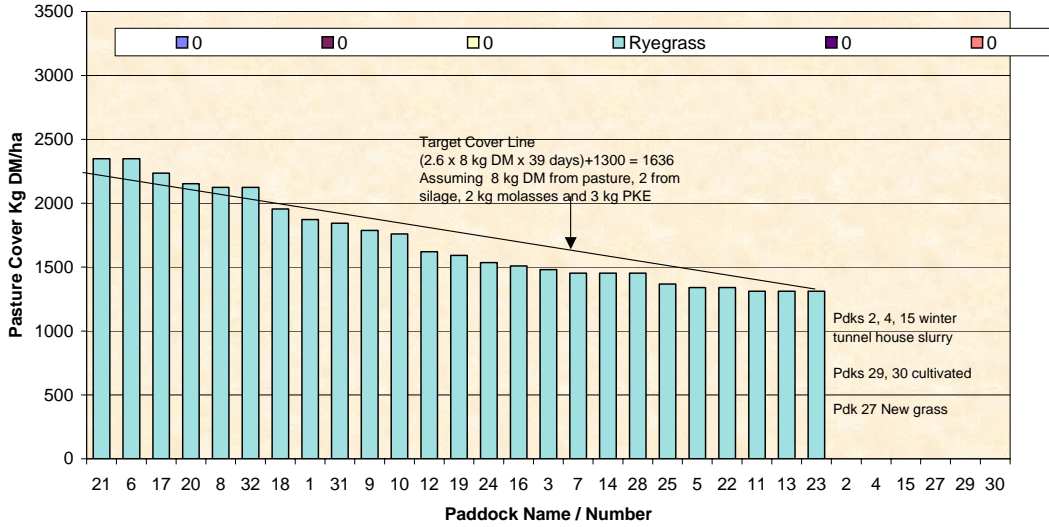
Pasture Growth Rates



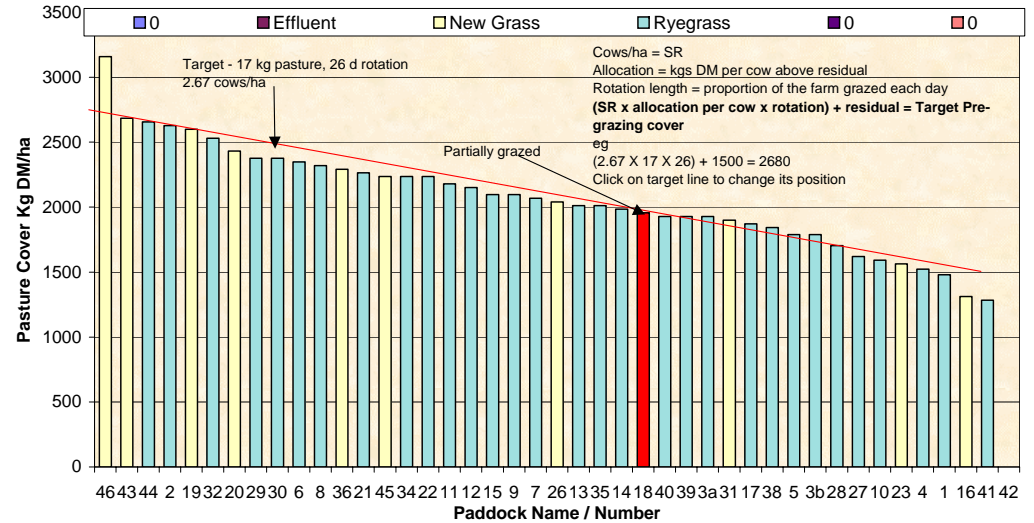
Soil Temperature



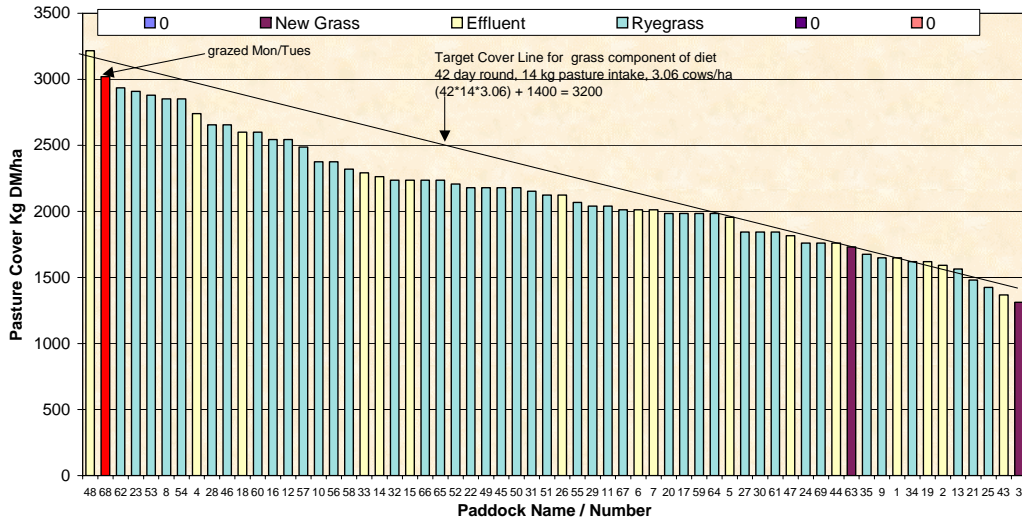
Farm Name Frei Dairy **Soil Temp:** 12.4 **01/04/2008** **Wedge Date**
Feed Wedge for Farm Block - Milking 1707 **Average Farm Cover**
 28.7 **Current Growth Rate**



Farm Name Dave & Mel Goble **Soil Temp:** 12.7 **01/04/2008** **Wedge Date**
Feed Wedge for Farm Block - Milking 2047 **Average Farm Cover**
 34.9 **Current Growth Rate**



Farm Name Kevin & Debbie Hall **Soil Temp:** 13.5 **31/03/2008** **Wedge Date**
Feed Wedge for Farm Block - Milking 2137 **Average Farm Cover**
 42.9 **Current Growth Rate**



Farm Name George & Jose van der Poel **Soil Temp:** 13.9 **31/03/2008** **Wedge Date**
Feed Wedge for Farm Block - Milking 1743 **Average Farm Cover**
 39.8 **Current Growth Rate**

