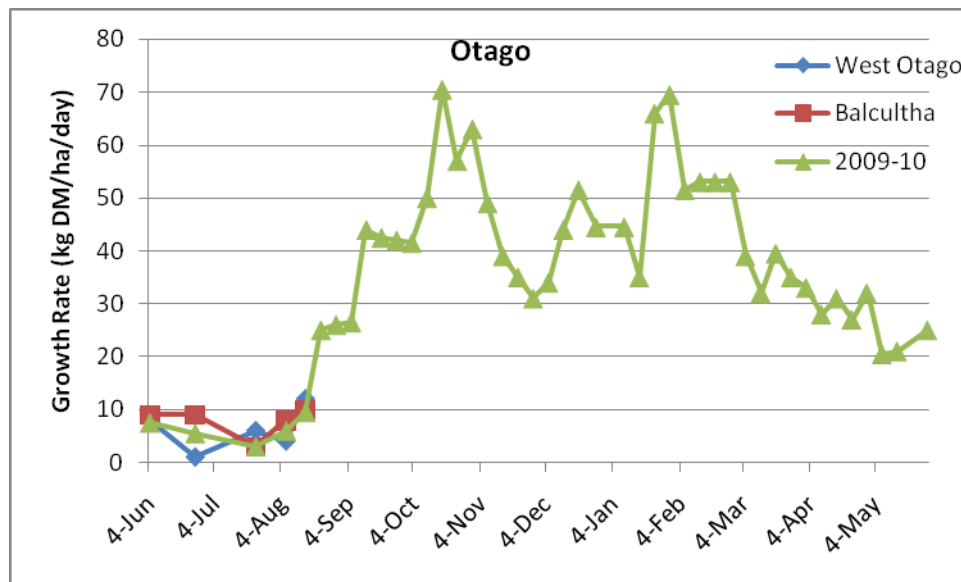
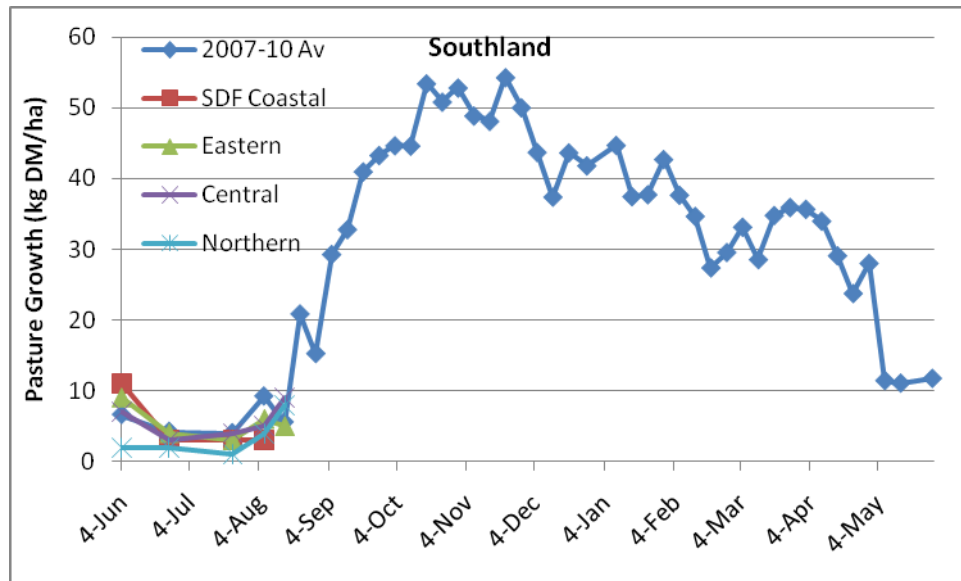
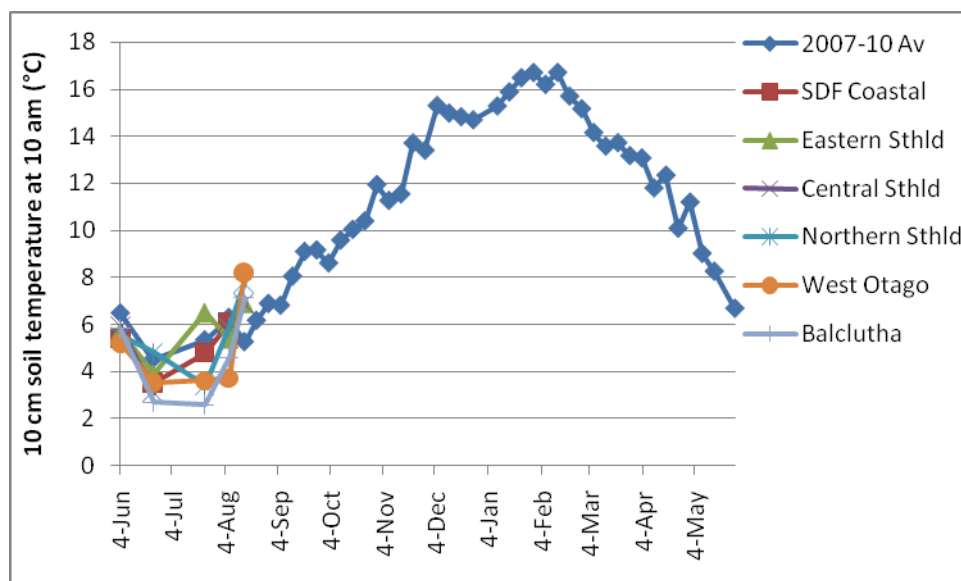


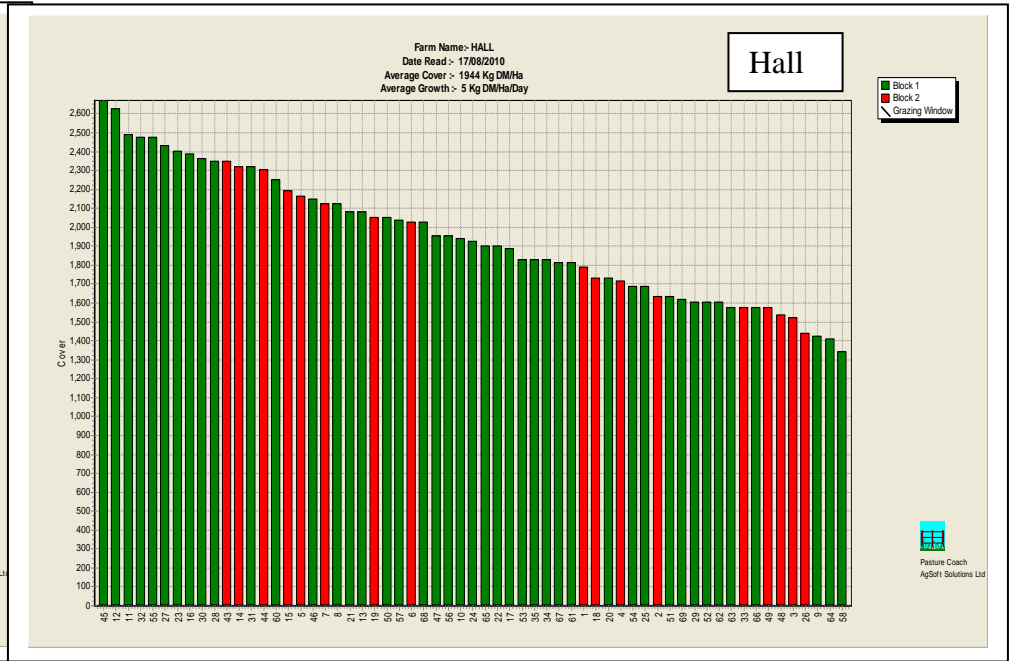
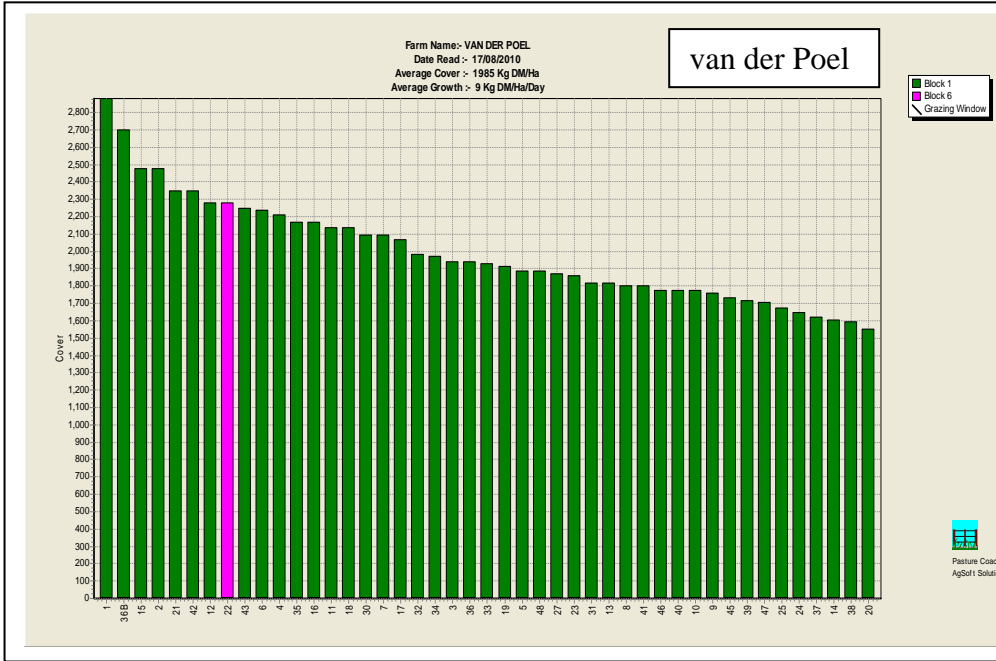
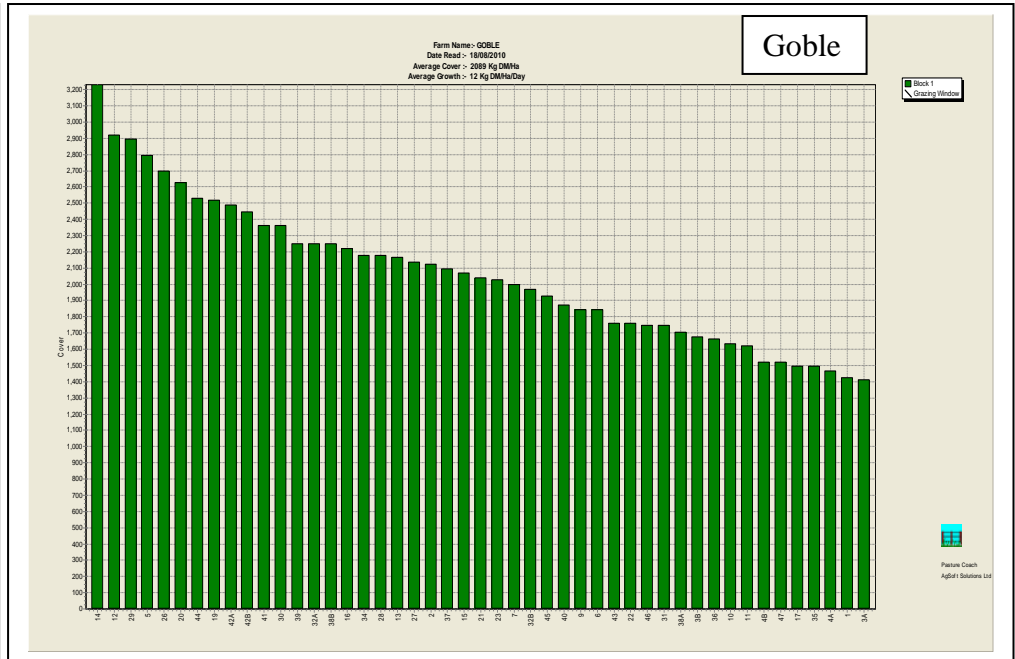
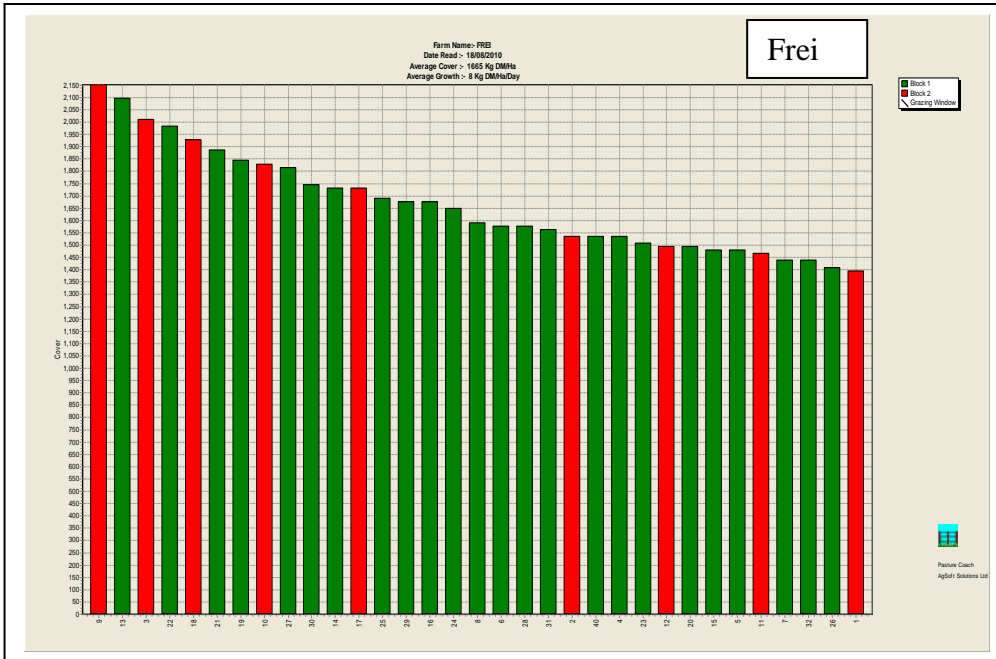


## Pasture Growth Rates



## Soil Temperature







# Southland Monitor Farm Project

## Weekly Update – 4 August 2010

Average growth rates across the region continue to be lower than those recorded in previous seasons. This trend is also being observed in the Woodlands growth rate data. On average growth across Southland was 30% less than the same period last year. Soil temperatures across the region are also lower than last August.

Average pasture cover on the monitor farms in Southland is less than last season by up to 300 kg DM/ha (Southland demonstration farm). On the Northern and Eastern Southland farms the lower APC equates to approximately 10.5 tonne pasture DM less on farm. For the Southland Demonstration farm the 300 kg/ha lower APC equates to 78 tonne pasture DM less than the start of the 2009-10 season. The West Otago farm is carrying a slightly higher APC than August 2009.

Calving is in full swing on the Demonstration farm and the Northern Southland farm has also commenced calving. The Eastern Southland farm has brought cows back from the support block and they are now grazing pasture on the milking platform.

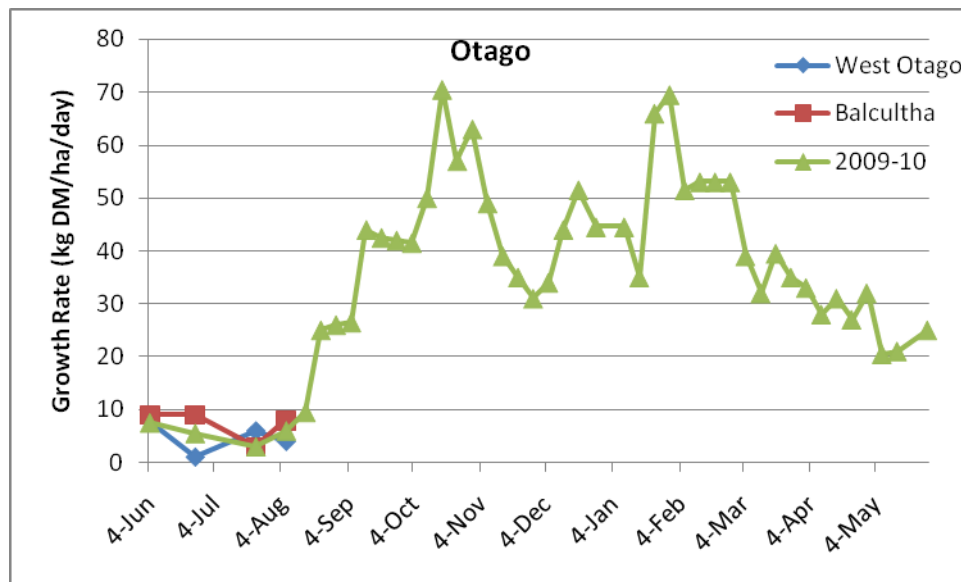
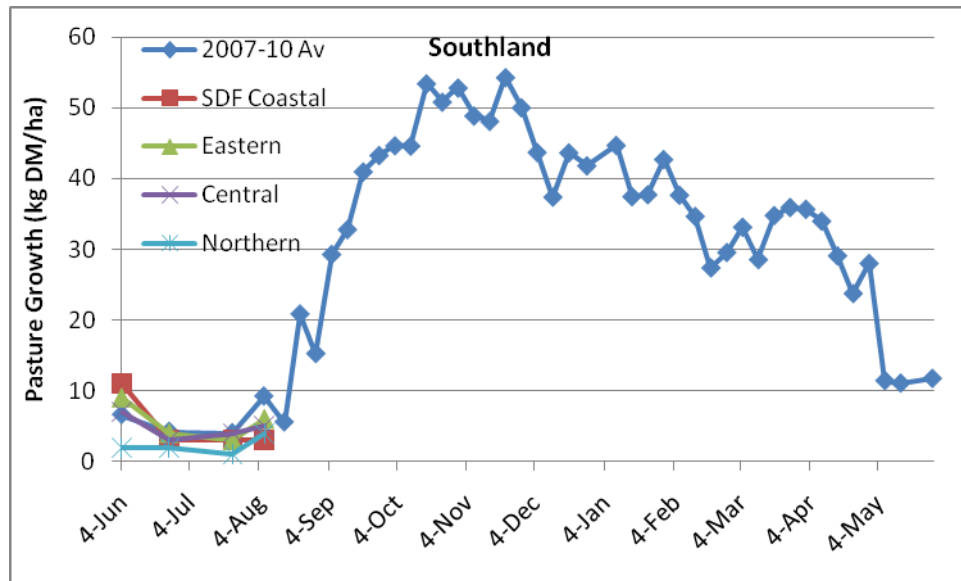
### Weekly Tip

Do a farm walk and establish your APC to accurately calculate your Spring Rotation Plan. Start with a slow rotation and as growth increases, you can reduce the rotation length. To minimise pugging damage shift cows before sun-up and stand them off in very wet weather. Check springers and colostrum cows as early as possible before starting the days' activities and treat any downer cows immediately. Make sure target magnesium intakes are achieved.

### Farm Summary

	Demo Farm	Eastern	Central	Northern	West Otago	Telford
Average cover (kg DM/ha)	2037	2004	1913	1608	2006	2020
APC 5 Aug 2009	2333	2077	1922	1682	1982	
Supplement (kg/cow/day)	-	-	-	-	-	-
Rotation length (days)	-	-	-	-	-	-
Stocking rate	-	-	-	-	-	-
Percentage in milk	7	0	0	2	0	0
Milksolids kg/cow	-	-	-	-	-	-
Milksolids kg/ha	-	-	-	-	-	-
N (kg/ha)	-	-	-	-	-	-
Soil temperature (°C)	6.1	5.4	6.1	5.9	3.7	4.6
Growth Rate (kg DM/day)	3	6	5	4	4	8
Rainfall	57	40	16	44	32	15
Comments						

## Pasture Growth Rates



## Soil Temperature

