

Southland Monitor Farm Project

Weekly Update – 27 December 2007

General Comments

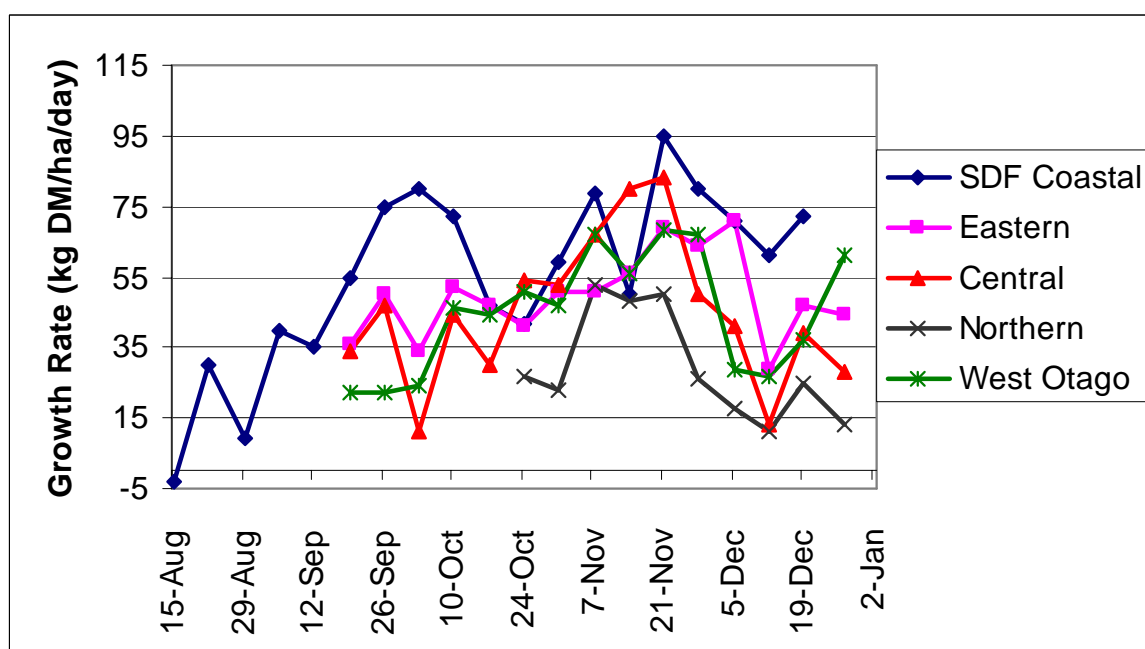
Soil temperature for all regions declined by 1-2 °C over the last week with temperatures between 13.3 and 15.8 °C recorded. West Otago was the only region to experience an increase in pasture growth rate from the previous week. This farm currently has the highest average pasture cover and highest post grazing residuals. The lowest growth rate, of only 13 kg DM/ha/day was measured in Northern Southland. With an average pasture cover of only 1700 kg DM/ha this farm is feeding a significant amount of supplement.

Two silage samples were sent for analysis from the Northern Southland Farm. One sample came back at 37% DM, 15.9% crude protein and 11.9 ME while the second sample was much drier at 51.9% DM. Despite the high DM it tested at 11.1 ME and 12.6% crude protein.

Farm Summary

	Demo Farm	Eastern	Central	Northern	West Otago
Average cover (kg DM/ha)		2130	1983	1706	2345
Rotation length (days)		24	21	19	20
Supplement (kg DM/cow)		0	1	4.7	-
Production (kg MS/cow)		1.72	1.77	1.54	-
Production (kg MS/ha)		5.66	5.36	3.46	-
Stocking rate (cows/ha)		3.29	3.03	2.24	3.03
Soil temperature (°C)		13.8	15.2	15.8	13.3
Growth Rate (kg DM/day)		45	28	13	61
Comments					

Pasture Growth Rates



Southland Monitor Farm Project

Weekly Update – 20 December 2007

General Comments

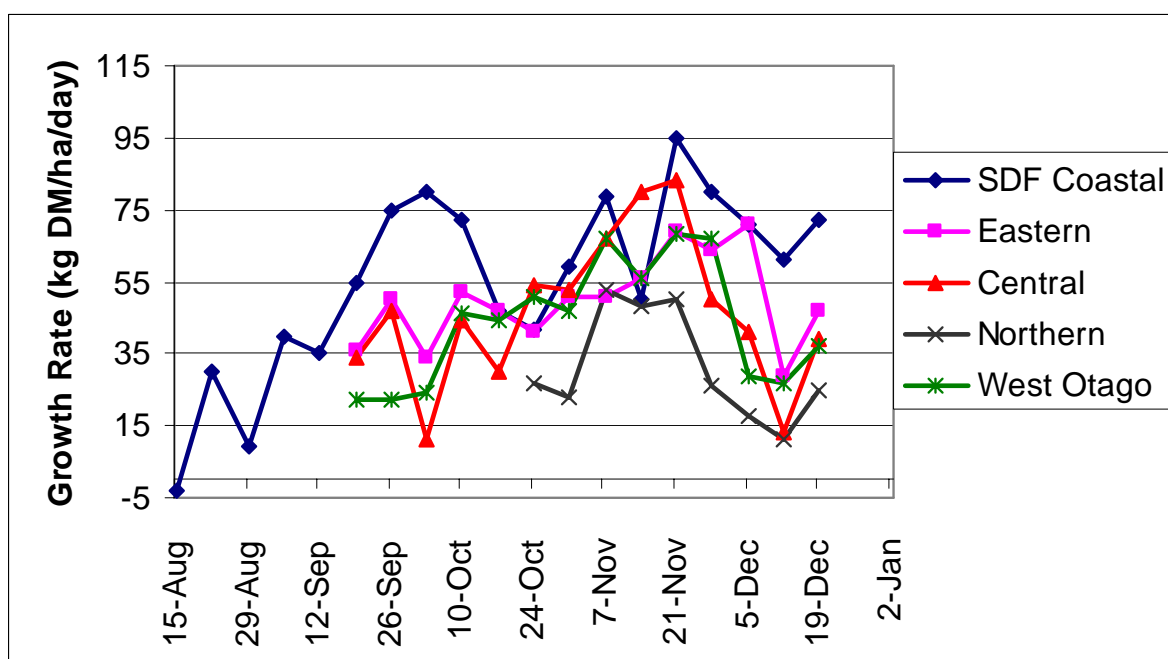
With the rain and cooler weather over the last week soil temperatures have eased by 1-2 C in all regions. Growth rates have responded to the rain and increased by up to 25 kg DM/ha/day over the last 7 days. While growth is has increased the only farm to be grown sufficient to meet demand from pasture only is the demonstration farm. The paddocks identified for conservation on the demonstration farm last week have yet to be harvested. The Northern and Central farms continue to feed supplement in the farm dairy. In addition the Central farm is now feeding 4 kg DM/cow/day of pasture silage. Production has continued to decline on all farms.

The results of the pasture samples collected on the 12th December show a wider range in pasture quality both on and between farms. The ME now ranges from 10.1 to 11.8 MJME/kg DM. The Eastern southland farm had the most consistent pasture quality and was the only farm to have both samples below 50% NDF. Crude protein ranged between 18 and 25%.

Farm Summary

	Demo Farm	Eastern	Central	Northern	West Otago
Average cover (kg DM/ha)	2591	2082	268	1732	2109
Rotation length (days)	22	25	22	19	20
Supplement (kg DM/cow)	0	0	1	5	-
Production (kg MS/cow)	1.70	1.68	1.86	1.67	-
Production (kg MS/ha)	4.70	5.42	5.50	3.75	-
Stocking rate (cows/ha)	2.85	3.29	3.03	2.24	3.03
Soil temperature (°C)	14.1	15.8	15.5	16.9	15.5
Growth Rate (kg DM/day)	72	47	39	25	37
Comments	13 pdks for silage				

Pasture Growth Rates



Southland Monitor Farm Project

Weekly Update – 12 December 2007

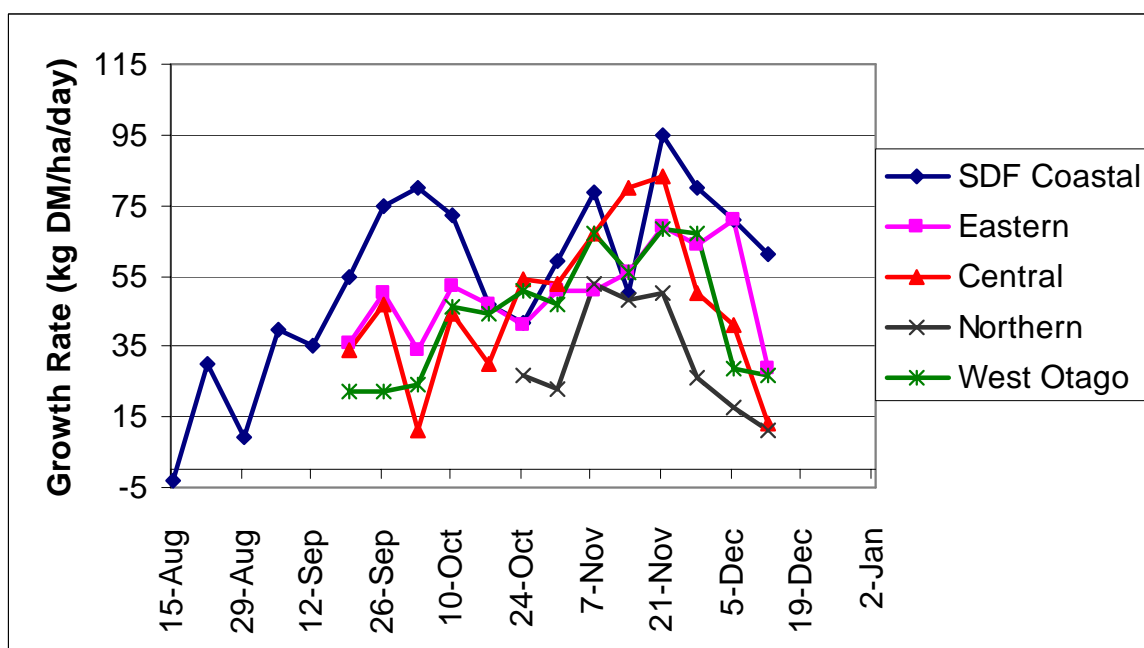
General Comments

Soil temperatures have remained high in all regions this week. Growth rates have reflected the continued dry weather with all farms growing below demand in the last week. All the paddocks closed for supplement have now been harvested or returned to grazing. Northern and Central Southland recorded the lowest growth rates at only 11 and 13 kg DM/day. These two farms have recommenced feeding supplement in the shed at milking. The feed wedges for all but the Demonstration Farm and the West Otago farm show that a large pasture deficit is looming unless pasture growth increases or supplements are fed to hold the round and push cover ahead. The rain this week combined with the high soil temperatures should see growth rebound but there will be a delay in this occurring. Production for all farms has dropped below 2 kg MS/cow/day over the last week.

Farm Summary

	Demo Farm	Eastern	Central	Northern	West Otago
Average cover (kg DM/ha)	2466	2009	2005	1641	2093
Rotation length (days)	25	24.5	23	19	19
Supplement (kg DM/cow)	0	0	1	1	0
Production (kg MS/cow)	1.73	1.80	1.98	1.72	1.95
Production (kg MS/ha)	4.8	5.81	5.83	3.79	5.76
Stocking rate (cows/ha)	3.1	3.26	2.96	2.24	3.03
Soil temperature (°C)	15.9	17.2	15.9	19.1	18.2
Growth Rate (kg DM/day)	61	29	13.0	11	27.2
Comments	9 pdks for silage				

Pasture Growth Rates



Southland Monitor Farm Project

Weekly Update – 6 December 2007

General Comments

Soil temperatures have lifted considerably in all regions this week with the Central, Northern and West Otago farms showing the effects of no rainfall in the last 2 weeks. The only regions to maintain high growth rates this week were the Demonstration Farm and Eastern Southland where 71 kg DM/day was recorded. This compares to only 18 kg DM/day in Northern Southland. Some of the paddocks identified as surplus in the last 2 weeks have been returned to grazing in Central Southland. Production has remained steady on the Demonstration farm and the Eastern Southland farm but declined in all other regions.

Of the pasture samples collected on the 27/28th November 5 of the 8 had ME concentrations below 12 MJME/kg DM. In the previous fortnight there was only 1 sample below 12 MJME/kg DM. NDF concentrations have risen in all areas ranging from 42-54%. Crude protein concentrations averaged 20.8%.

Farm Summary

	Demo Farm	Eastern	Central	Northern	West Otago
Average cover (kg DM/ha)	2480	2341	2249	1768	2169
Rotation length (days)	26	24	25	26.5	20
Supplement (kg DM/cow)	0	0	1	0	0
Production (kg MS/cow)	1.83	1.9	2.03	1.84	2.08
Production (kg MS/ha)	5.3	6.13	5.95	4.07	6.16
Stocking rate (cows/ha)	3.1	3.29	2.93	2.24	2.96
Soil temperature (°C)	15.6	14.6	15.9	17.3	18.1
Growth Rate (kg DM/day)	71	71	41	18	29
Comments	All silage harvested this week	6.5% of farm shut for silage	4% of farm shut for silage	2% of farm shut for silage	2% of farm shut for silage

Pasture Growth Rates

