

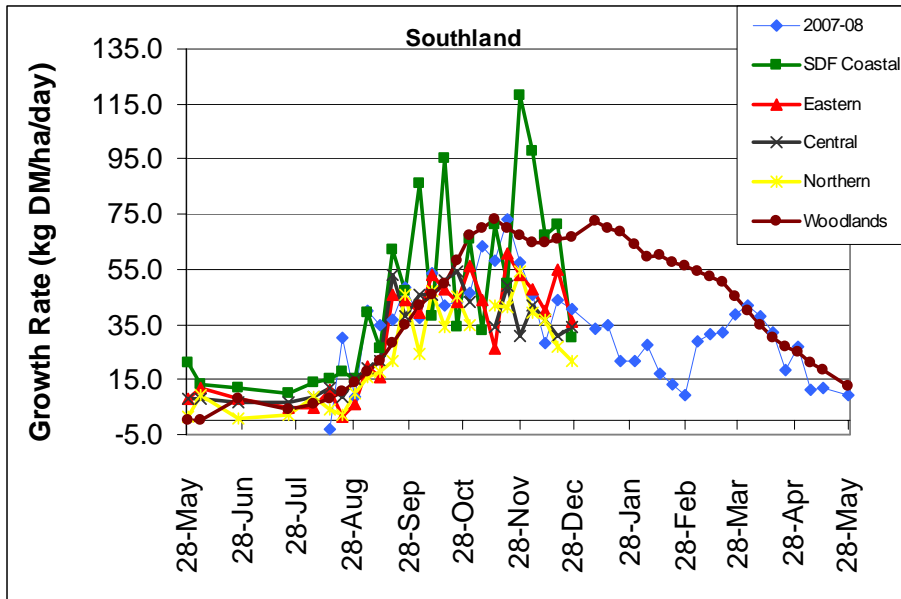
Soil moisture levels across the regions are higher than the same time last year, however all regions are sitting between 75 and 100 mm deficit. Gore soil moisture levels are most similar to last season.

The lower growth rates are likely an impact of lower soil temperatures, less available N in the soil and increasing soil moisture deficits.

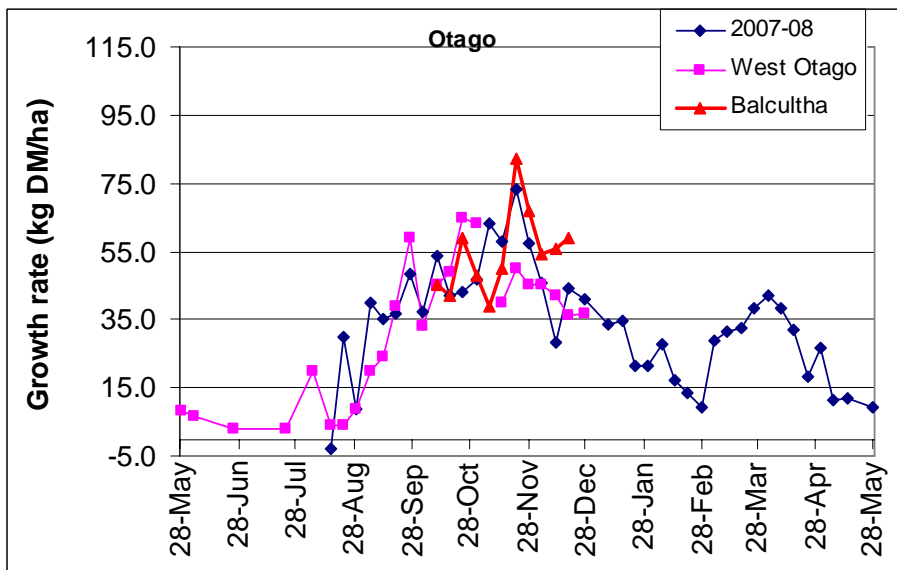
Farm Summary

	Demo Farm	Eastern	Central	Northern	West Otago	Telford
Average cover (kg DM/ha)	2165	2006	2220	2030	2090	
Rotation length (days)	22	25	24	19	18	
Stocking rate	2.96	3.23	2.43	2.43	2.5	
Milksolids kg/cow	1.50	1.83	1.92	1.70	1.94	
Milksolids kg/ha	4.4	6.0	4.7	4.1	4.9	
N (kg/ha)	63	37	47	10	40	
Supplement (kg/cow/day)	0	0	1	0	0	
Soil temperature (°C)	14.7	14.2	17.0	14.5	14.6	
Growth Rate (kg DM/day)	30	36	34	22	37	
Rainfall	1	-	45	3	-	
Comments				13 ha for hay		

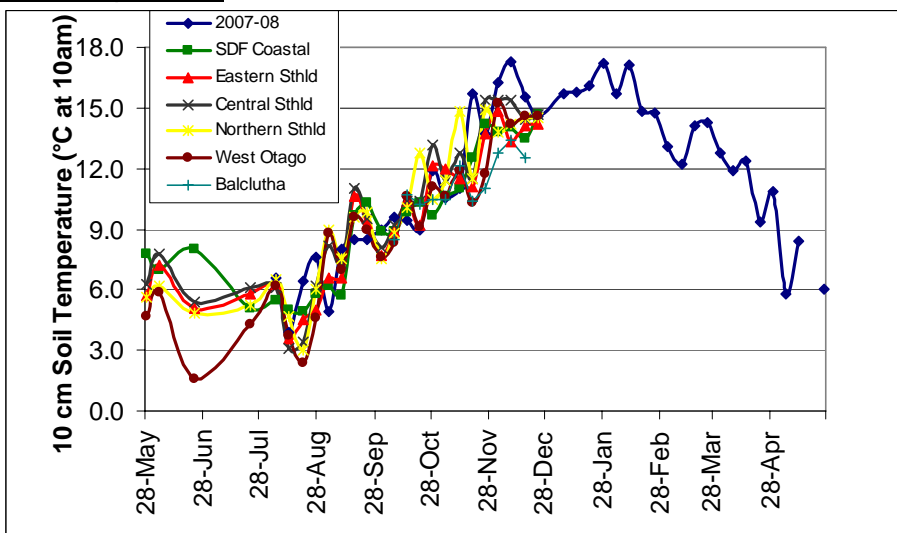
Pasture Growth Rates



NB the Woodlands data is the long-term average from mature pastures at Woodlands measured using enclosure cages.

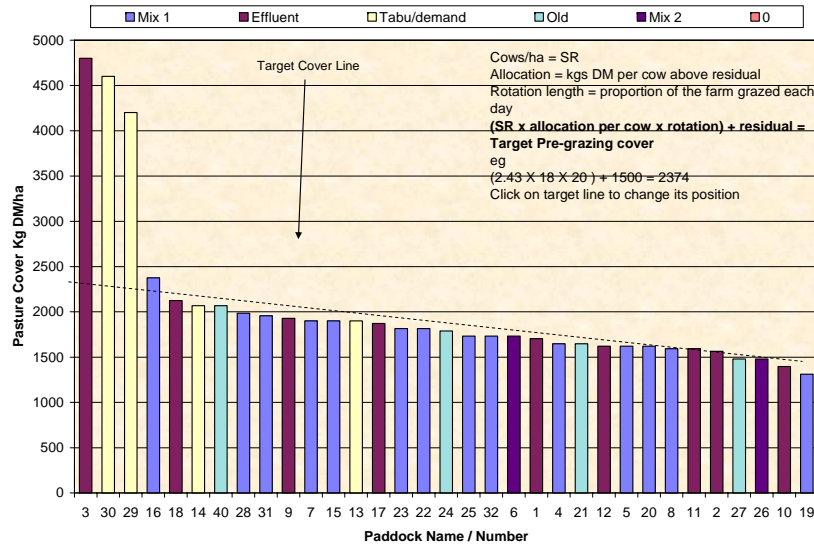


Soil Temperature



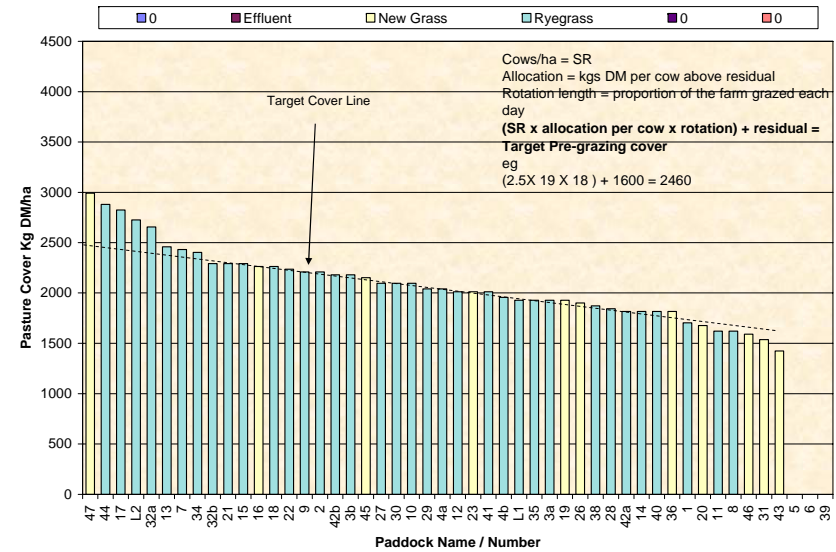
Farm Name: Frei Dairy
 Soil Temp: 14.5
 24/12/2008
 Wedge Date: 2030
 Average Farm Cover: 22.9
 Current Growth Rate

Feed Wedge for Farm Block - Milking



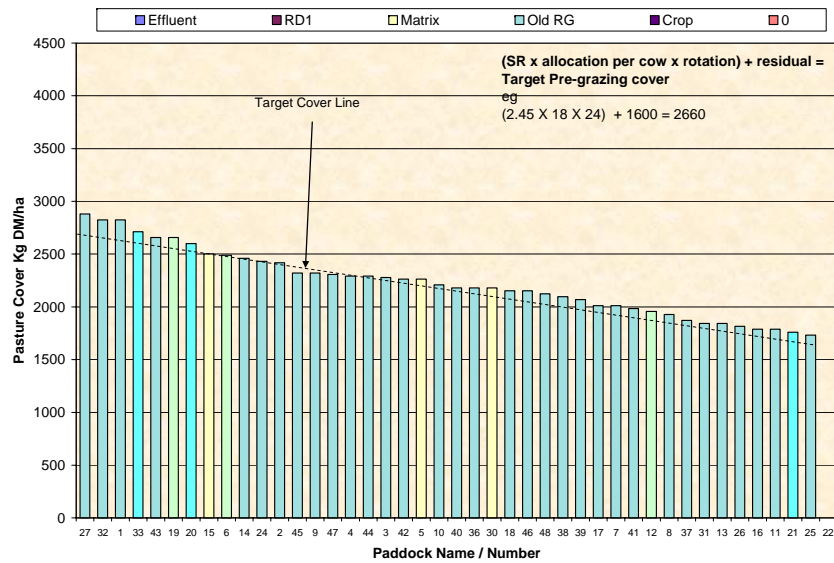
Farm Name: Dave & Mel Gobie
 Soil Temp: 14.6
 24/12/2008
 Wedge Date: 2090
 Average Farm Cover: 36.6
 Current Growth Rate

Feed Wedge for Farm Block - Milking



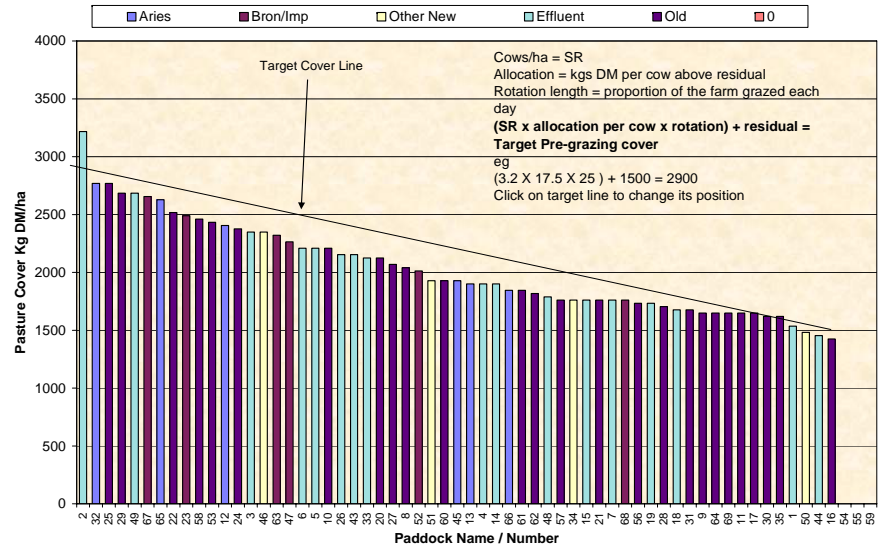
Farm Name: George & Jose van der Poel
 Soil Temperature: 17.0
 23/12/2008
 Wedge Date: 2220
 Average Farm Cover: 34.4
 Current Growth Rate

Feed Wedge for Farm Block - Milking



Farm Name: Kevin & Debbie Hall
 Soil Temp: 14.2
 23/12/2008
 Wedge Date: 2006
 Average Farm Cover: 35.5
 Current Growth Rate

Feed Wedge for Farm Block - Milking



Pasture Quality

NOTE: We sample the paddocks immediately in front of the milkers, to height of 3.5cm (7 clicks on the rising plate meter). The RPM data in the table is the pre-grazing clicks recorded on the day of sampling.

Eastern Southland

Description	Date	RPM	% prot	% Lipid	% SSS	% NDF	% ADF	OMD	MJME/ kg DM	%DM
Pdk 16	25Jun	13.8	24.3	3.9	15.4	49.8	28.2	80.6	11.8	16.7
Pdk 43	25 Jun	15.8	26.2	4.8	12.1	50.7	27.2	78.2	11.3	15.9
Pdk 43	22 Jul	18.8	24.8	4.4	14.1	52	26	78.6	11.5	16.0
Pdk 16	22 Jul	13.6	26.4	4.7	14.5	48.0	24.7	82.7	11.9	17.7
Pdk 43	5 Aug	13.1	26.1	5.3	15.5	44.0	24.0	80.3	11.5	15.1
Pdk 16	5 Aug	13.6	25.2	4.8	16.9	40.9	25.4	81.3	11.6	15.0
Pdk 16	19Aug	13.6	24.3	4.3	15.5	42.7	26.1	80.7	11.6	15.5
Pdk 50	19Aug	16.2	26.9	5.3	15.1	42.4	24.6	82	12	14.2
Pdk 52	2 Sep	16.0	23.3	4.9	16.1	43.1	24.4	80.1	11.6	22.0
Pdk 2	2 Sep	14.0	26.6	5.8	11.4	45.3	24.2	78.2	11.2	19.2
Pdk 1	16Sep	9.8	26.1	5.9	10.5	47.7	25.8	78	11.3	19.7
Pdk 7	16Sep	13.4	24.6	5.6	13.2	47.0	24.6	79.3	11.5	19.8
Pdk 47	30Sep	12.8	33.3	5.2	11.0	45.1	22.3	>85	>12.7	15.8
Pdk 64	30Sep	15.0	28.8	5.2	14.6	44.8	24.1	84.9	12.5	16.4
Pdk 57	14 Oct	14.0	30.3	6.1	12.5	43.7	24.2	82.0	11.8	18.5
Pdk 30	14 Oct	14.4	33.1	5.7	13.4	41.0	24.0	84.6	12.3	17.5
Pdk 43	28 Oct	17.2	25.6	4.9	15.3	46.4	25.0	82.8	12.1	18.0
Pdk 11	28 Oct	14.2	24.2	4.7	14.5	48.2	24.8	79.7	11.8	18.7
Pdk 46	11Nov	12.2	29.4	5.0	11.1	43.9	24.3	83.9	12.0	11.9
Pdk 52	11Nov	12.0	32.1	5.5	11.1	40.7	22.7	84.9	11.8	12.7
Pdk 2	25Nov	13.6	33.0	5.9	7.7	40.6	26.9	80.6	11.0	13.4
Pdk 11	25Nov	13.1	29.4	5.0	6.0	45.1	26.1	74.3	10.4	15.8
Pdk 69	9Dec	14.8	28.1	5.1	12.6	46.0	23.1	82.5	12.0	13.8
Pdk 7	9 Dec	12.3	26.1	4.9	14.9	44.3	23.3	82.0	12.1	14.5

Central Southland

Description	Date	RPM	% prot	% Lipid	% SSS	% NDF	% ADF	OMD	MJME/kg DM	%DM
Pdk 6	25 Jun	12.2	31.2	5.6	11.6	44.9	21.9	>85	12.6	19.9
Pdk 26	25 Jun	9.8	28.6	5.2	14.2	44.1	24.4	81.3	12.0	19.6
Pdk 26	22 Jul	11.4	27.8	5.5	15.2	42.8	23.6	83.1	11.9	18.2
Pdk 6	22 Jul	13.0	27.0	5.3	14.3	45.6	23.4	82.4	12.1	19.9
Pdk 26	5 Aug	18.2	27.9	5.7	15.2	39.8	23.8	81.7	11.6	17.1
Pdk 6	5 Aug	13.6	32.4	5.9	14.4	37.4	22.3	>85	12.6	20.8
Pdk 21	19Aug	-	28.7	4.6	11.9	41.2	23.1	>85	12.3	19.3
Pdk 9	19Aug	11.6	30.1	5.1	13.1	41.1	22.1	>85	>12.7	21.8
Pdk 12	2 Sep	15.0	30.3	6.2	12.6	42.1	20.7	84.7	12.5	21.1
Pdk 3	2 Sep	15.5	25.2	6.0	17.5	40.0	21.0	>85	>12.7	21.9
Pdk 18	16Sep	18,4	29.6	5.4	19.7	45.7	24.5	81.7	11.7	19.3
Pdk 16	16Sep	18.0	28.1	5.8	13.3	43.4	22.5	84.1	12.2	19.7
Pdk 36	30Sep	10.3	22.1	4.9	17.1	48.1	23.4	82.9	12.2	21.1
Pdk 26	30Sep	8.8	28.2	5.6	14.9	44.9	22.2	>85	12.7	19.3
Pdk 19	14 Oct	15.8	20.3	4.4	24.1	37.9	22.1	>85	>12.7	22.5
Pdk 42	14 Oct	15.8	25.3	5.3	19.3	41.0	23.4	>85	>12.7	19.2
Pdk 46	28 Oct	16.8	23.2	5.0	18.4	36.2	23.1	83.2	11.9	18.9
Pdk 26	28 Oct	14.8	28.1	5.9	13.1	36.3	23.5	83.2	11.8	18.7
Pdk 18	11Nov	15.2	22.5	4.6	16.3	45.6	24.7	80.0	11.9	19.7
Pdk 43	11Nov	17.2	30.1	5.3	12.6	40.8	22.1	85.8	12.5	16.3
Pdk 33	25Nov	15.2	28.9	5.1	10.6	45.8	27.9	76.0	10.7	17.0
Pdk 8	25Nov	16.0	31.4	5.0	7.6	47.5	24.6	81.2	11.3	18.1
Pdk 46	9 Dec	*	24.3	4.5	17.4	44.6	24.1	83.9	12.4	18.2
Pdk 12	9 Dec	18.0	23.1	4.6	15.7	45.4	26.1	78.4	11.5	20.5

West Otago

Description	Date	RPM	% prot	% Lipid	% SSS	% NDF	% ADF	OMD	MJME/kg DM	%DM
Pdk 14	2 Jul	11.8	27.1	5.0	10.6	48.6	25.2	79.1	11.5	21.1
Pdk 26	2 Jul	14.2	27.4	5.2	13.3	43.3	21.5	84.0	12.4	20.7
Pdk 14	23 Jul	12.4	28.8	5.3	13.5	43.3	25.4	80.2	11.5	15.8
Pdk 26	23 Jul	15.2	30.5	5.4	11.3	44.7	23.5	82.8	11.8	14.2
Pdk 14	5 Aug	13.4	29.0	5.4	13.0	45.3	23.9	79.6	11.4	17.0
Pdk 26	5 Aug	18.2	29.1	5.6	12.9	41.5	24.1	81.5	11.7	15.9
Pdk 14	20Aug	13.4	25.6	4.8	15.2	43.7	25	81.5	11.9	21.2
Pdk 42	20Aug	23.0	22.1	4.8	17.7	44.4	22.2	>85	>12.7	17.3
Pdk 17	3 Sep	14.8	28.3	5.5	10.2	46.2	24.9	77.8	11.1	16.3
Pdk 42	3 Sep	11.3	22.3	5.4	17.4	43.4	21.3	>85	>12.7	18.6
Pdk 27	17Sep	14.2	29.4	5.9	12.0	44.6	23.5	84	12.3	19.8
Pdk 12	17Sep	13.7	29.6	5.7	11.5	47.1	23.4	83.3	12.1	18.9
Pdk 35	1 Oct	13.0	32.1	6.0	14.6	38.2	21.4	>85	12.6	14.2*
Pdk 2	1 Oct	14.6	30.4	6.3	14.2	40.0	20.9	>85	12.6	17.1
Pdk 27	15 Oct	14.2	30.5	5.8	14.3	38.7	23.3	>85	>12.7	19.0
Pdk 45	15 Oct	17.4	29.9	6.5	14.7	36.9	22.2	>85	>12.7	14.3
Pdk 14	29 Oct	16.0	31.9	5.5	10.3	40.0	22.2	86.1	12.0	17.1
Pdk 35	29 Oct	17.2	26.1	5.4	15.2	39.5	22.9	84.9	12.3	18.2
Pdk 23	12Nov	13.4	28.0	5.6	11.4	40.1	23.2	85.6	12.4	16.0
Pdk 44	12Nov	19.2	28.8	5.6	9.7	40.1	22.7	84.5	12.0	16.5
Pdk 18	26Nov	15.8	30.6	5.7	8.3	45.0	24.5	77.4	11.0	17.4
Pdk 31	26Nov	12.0	35.0	6.3	9.2	33.3	22.7	83.8	11.4	15.3
Pdk 46	10Dec	16.6	25.6	5.2	15.4	39.7	24.1	79.3	11.6	16.9
Pdk 18	10Dec	23.0	20.1	4.2	13.1	52.8	28.2	74.3	11.0	19.0

Northern Southland

Description	Date	RPM	% prot	% Lipid	% SSS	% NDF	% ADF	OMD	MJME/kg DM	%DM
Pdk 18	2 Jul	9.4	25.8	4.9	15.7	44.0	22.8	84.3	12.3	18.4
Pdk 9	2 Jul	10.4	26.5	4.5	16.6	40.2	23.2	>85	12.4	15.0
Pdk 9	23 Jul	10.8	28.6	4.7	10.6	49.2	24.5	80.0	11.7	13.9
Pdk 18	23 Jul	9.4	23.7	4.5	16.6	46.5	25.1	81.2	11.7	15.0
Pdk 9	5 Aug	11.8	27.2	5.2	18.2	39.7	22.8	84.4	12.3	18.8
Pdk 18	20Aug	9.4	23.6	4.7	17.6	42.9	23.1	85	12.6	24.8
Pdk 14	20Aug	10	26.3	5.6	20.5	33.1	21.1	>85	>12.7	21.7
Pdk 4	3 Sep	12.8	30.0	5.7	8.9	49.1	22.5	78.7	11.7	19.5
Pdk 32	3 Sep	9.2	23.7	4.8	16.7	41.4	22.4	84.3	12.2	18.5
Pdk 12	17Sep	9.2	33.8	5.9	12.0	36.6	22.4	>85	12.3	14.2*
Pdk 8	17Sep	11.0	29.8	5.5	13.2	40.4	22.6	84.7	12.1	14.6*
Pdk 25	1 Oct	11.0	25.3	5.2	15.6	42.8	24.4	82.8	12.1	19.0
Pdk 18	15 Oct	11.6	24.8	5.0	19.7	42.8	22.4	>85	>12.7	20.0
Pdk 8	15 Oct	13.4	31.1	5.2	15.5	37.7	22.5	>85	>12.7	16.5
Pdk 21	29 Oct	13.2	32.2	5.8	11.9	37.9	24.0	82.9	11.8	16.0
Pdk 17	29 Oct	13.8	28.1	4.8	14.9	35.8	24.4	82.8	11.8	15.9
Pdk 9	12Nov	13.6	28.9	3.9	13.3	39.9	24.2	84.8	12.4	17.9
Pdk 6	12Nov	15.2	28.1	5.0	13.1	39.5	25.2	83.2	12.0	17.8
Pdk 26	26Nov	12.6	31.6	4.5	12.2	38.1	24.1	83.9	12.0	15.9
Pdk 2	26Nov	14.4	26.6	4.7	14.2	41.8	25.5	78.6	11.3	17.3
Pdk 5	10Dec	15.2	19.3	3.9	16.4	47.5	27.4	73.5	10.5	17.8
Pdk 29	10Dec	24.6	13.9	3.7	13.4	59.1	32.7	65.7	10.0	21.1

- * Pasture sample collected in wet conditions

Southland Monitor Farm Project

Weekly Update – 17 December 08

General Comments

Growth rates across the region have been variable again this week. The Demonstration farm continues to grow at a faster rate than the monitor farms. Growth on the monitor farms and at Balclutha ranged between 27 and 59 kg DM/ha/day compared with 71 kg/day on the Demonstration farm. Growth on the Northern Southland and West Otago farms may be an underestimate as the farms were plated in very windy conditions which had flattened the paddocks with higher covers. Both these farms have silage shut for conservation but are having difficulty getting contractors during the short breaks in the weather. Despite sufficient soil moisture growth rates are trending in the same direction as this time last year. Soil temperatures are 1-2 °C lower than last year. All the monitor farms have used less nitrogen, year to date, than last year. Currently the Eastern and Central Southland and West Otago farms are applying urea following grazing.

Pasture samples collected last week had less energy than those collected 2 weeks prior. Both samples from Northern Southland contained less than 11 MJME/kg DM and crude protein concentrations were less than 20%. This farm does not apply N fertiliser. NDF concentrations ranged from 39.7 to 59.1% with the higher concentrations being observed in paddocks with lower ME. Visiting the farms yesterday I noticed that there is considerable seed head development in many of them which will be reducing the quality.

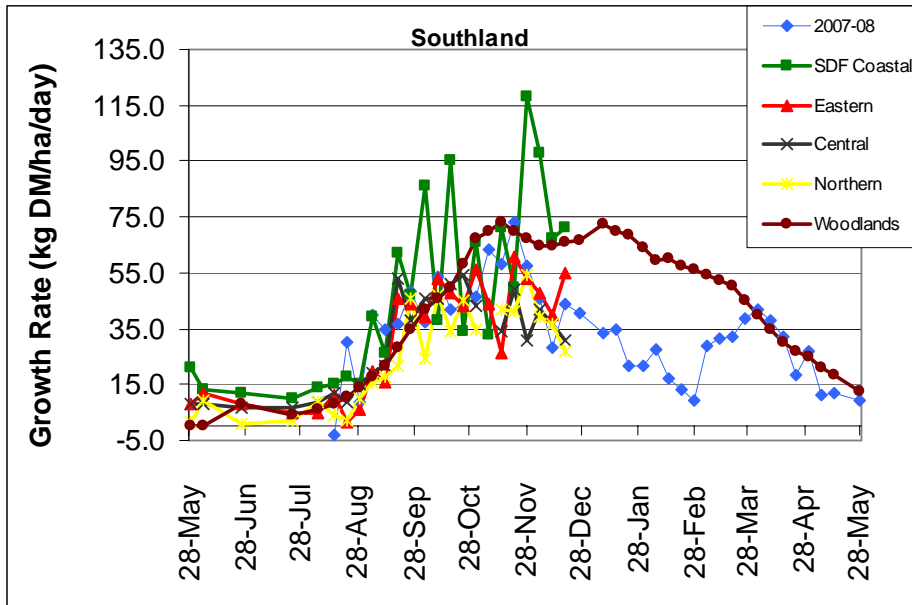
SDF management team update

Remember to take time off over the festive season to recharge the batteries and catch up with family and friends. If you are going away make you leave a list in the shed with emergency phone numbers and that staff are clear on their responsibilities. Wishing you all a Merry Christmas and thank you for following the monitor farm project this year. The next farmwatch will be in the week commencing 12 Jan 09.

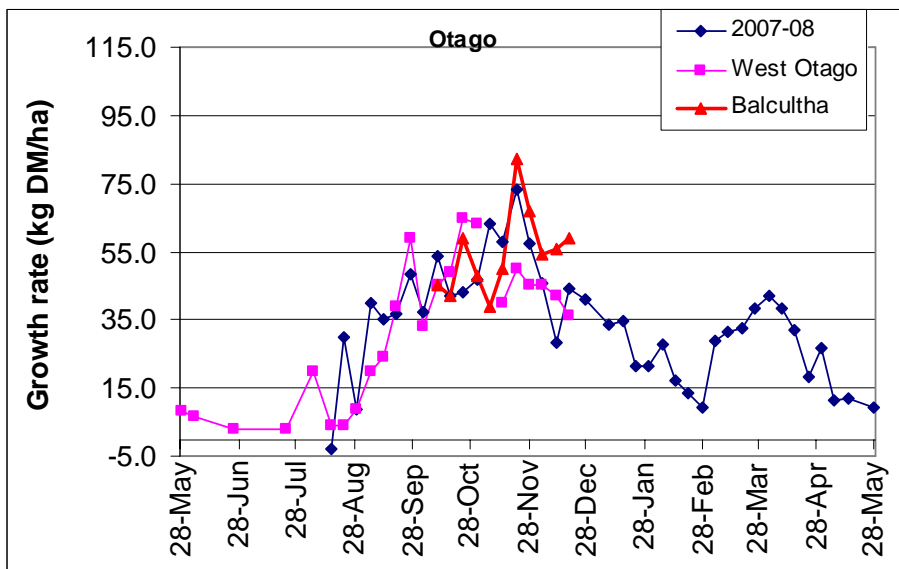
Farm Summary

	Demo Farm	Eastern	Central	Northern	West Otago	Telford
Average cover (kg DM/ha)	2291	2065	2270	2054	2235	2180
Rotation length (days)	22	25	24	19	18	29
Stocking rate	2.96	3.33	2.43	2.43	2.5	3.35
Milksolids kg/cow	1.50	1.81	1.90	1.73	1.99	1.67
Milksolids kg/ha	4.6	5.9	4.6	4.2	5.0	5.3
N (kg/ha)	63	34	30	10	41	94
Supplement (kg/cow/day)	0	0	1	0	0	0.5
Soil temperature (°C)	13.5	14.1	14.4	14.5	14.6	12.5
Growth Rate (kg DM/day)	71	55	31	27	36	59
Rainfall	18	12	42	25	-	10
Comments				3 pdks shut	3 pdks shut	

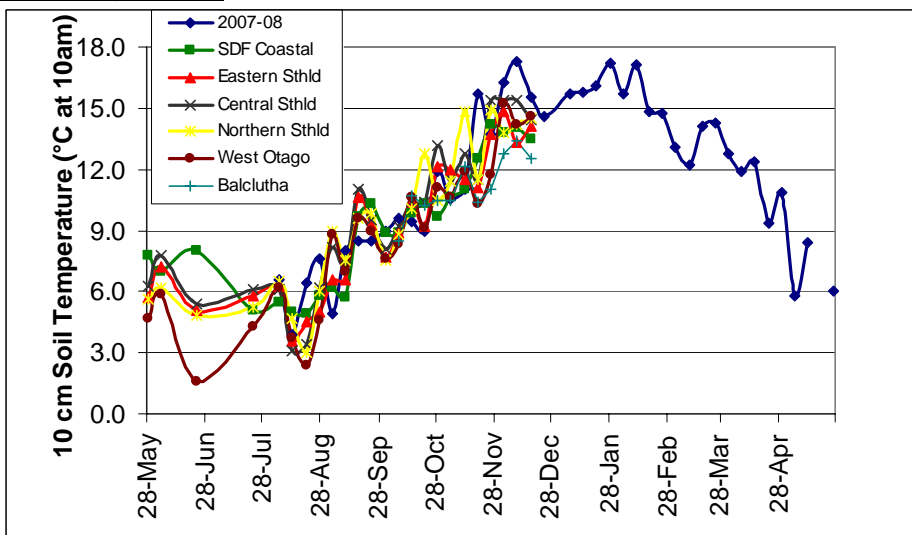
Pasture Growth Rates



NB the Woodlands data is the long-term average from mature pastures at Woodlands measured using enclosure cages.

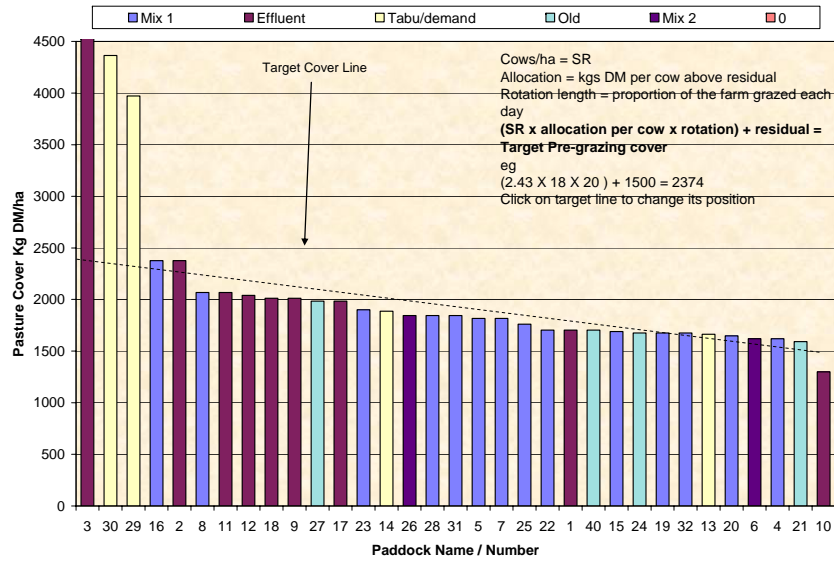


Soil Temperature



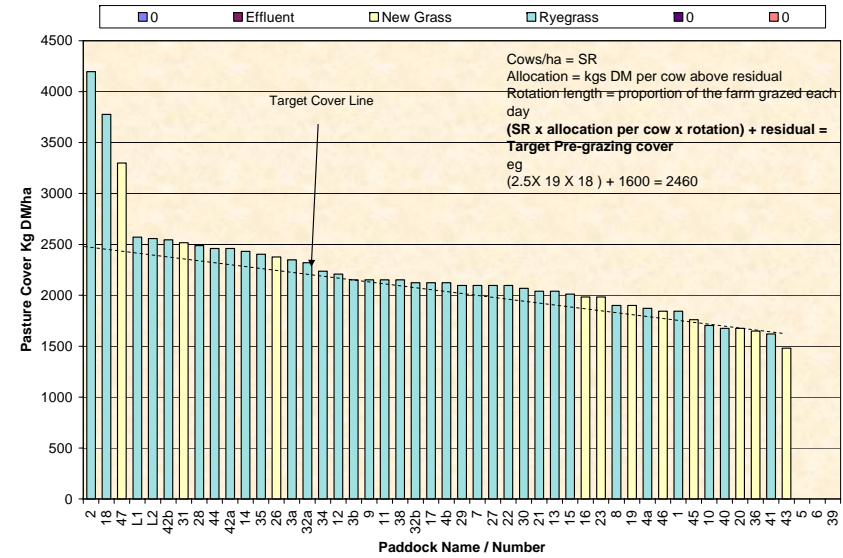
Farm Name: Frei Dairy
 Soil Temp: 14.5
 18/12/2008
 Wedge Date: 2054
 Average Farm Cover: 25.8
 Current Growth Rate

Feed Wedge for Farm Block - Milking



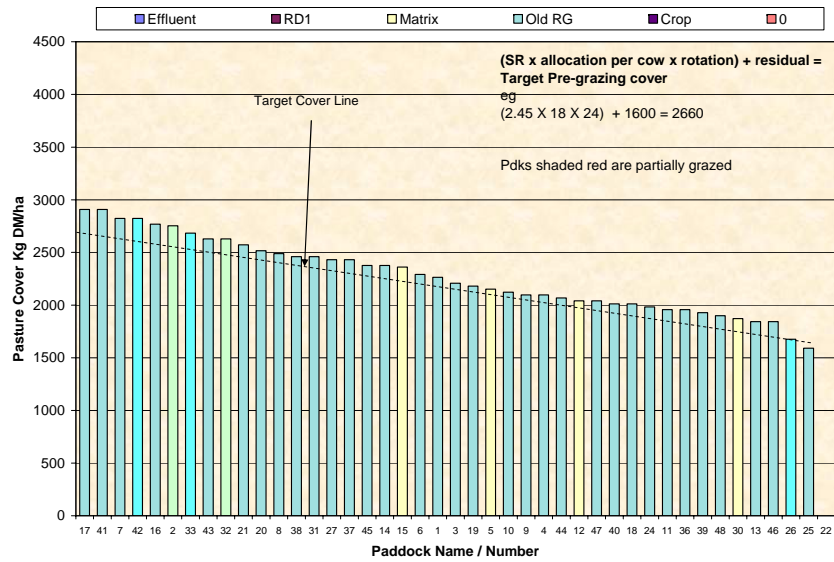
Farm Name: Dave & Mel Gobie
 Soil Temp: 14.6
 18/12/2008
 Wedge Date: 2235
 Average Farm Cover: 35.5
 Current Growth Rate

Feed Wedge for Farm Block - Milking



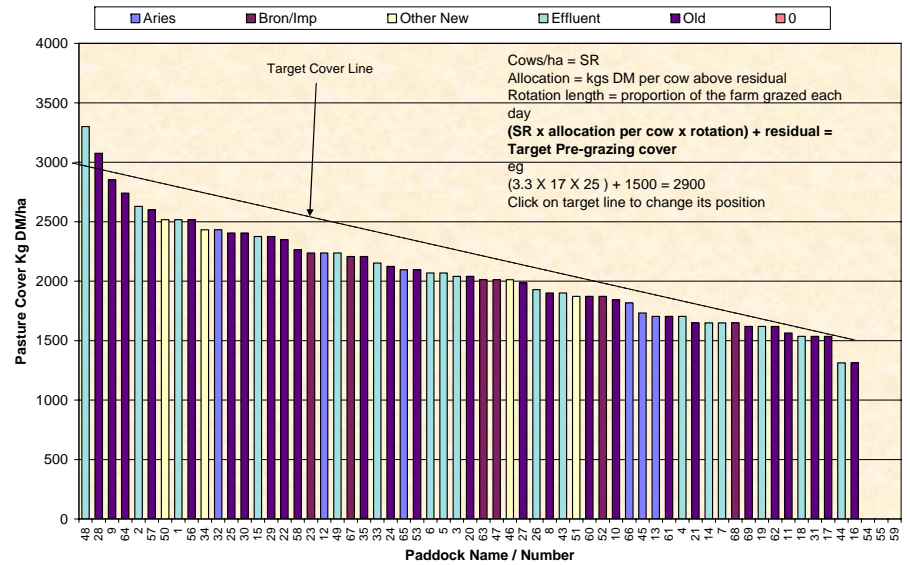
Farm Name: George & Jose van der Peet
 Soil Temperature: 14.4
 17/12/2008
 Wedge Date: 2270
 Average Farm Cover: 31.1
 Current Growth Rate

Feed Wedge for Farm Block - Milking



Farm Name: Kevin & Debbie Hall
 Soil Temp: 14.1
 17/12/2008
 Wedge Date: 2065
 Average Farm Cover: 55.1
 Current Growth Rate

Feed Wedge for Farm Block - Milking



Pasture Quality

NOTE: We sample the paddocks immediately in front of the milkers, to height of 3.5cm (7 clicks on the rising plate meter). The RPM data in the table is the pre-grazing clicks recorded on the day of sampling.

Eastern Southland

Description	Date	RPM	% prot	% Lipid	% SSS	% NDF	% ADF	OMD	MJME/ kg DM	%DM
Pdk 16	25Jun	13.8	24.3	3.9	15.4	49.8	28.2	80.6	11.8	16.7
Pdk 43	25 Jun	15.8	26.2	4.8	12.1	50.7	27.2	78.2	11.3	15.9
Pdk 43	22 Jul	18.8	24.8	4.4	14.1	52	26	78.6	11.5	16.0
Pdk 16	22 Jul	13.6	26.4	4.7	14.5	48.0	24.7	82.7	11.9	17.7
Pdk 43	5 Aug	13.1	26.1	5.3	15.5	44.0	24.0	80.3	11.5	15.1
Pdk 16	5 Aug	13.6	25.2	4.8	16.9	40.9	25.4	81.3	11.6	15.0
Pdk 16	19Aug	13.6	24.3	4.3	15.5	42.7	26.1	80.7	11.6	15.5
Pdk 50	19Aug	16.2	26.9	5.3	15.1	42.4	24.6	82	12	14.2
Pdk 52	2 Sep	16.0	23.3	4.9	16.1	43.1	24.4	80.1	11.6	22.0
Pdk 2	2 Sep	14.0	26.6	5.8	11.4	45.3	24.2	78.2	11.2	19.2
Pdk 1	16Sep	9.8	26.1	5.9	10.5	47.7	25.8	78	11.3	19.7
Pdk 7	16Sep	13.4	24.6	5.6	13.2	47.0	24.6	79.3	11.5	19.8
Pdk 47	30Sep	12.8	33.3	5.2	11.0	45.1	22.3	>85	>12.7	15.8
Pdk 64	30Sep	15.0	28.8	5.2	14.6	44.8	24.1	84.9	12.5	16.4
Pdk 57	14 Oct	14.0	30.3	6.1	12.5	43.7	24.2	82.0	11.8	18.5
Pdk 30	14 Oct	14.4	33.1	5.7	13.4	41.0	24.0	84.6	12.3	17.5
Pdk 43	28 Oct	17.2	25.6	4.9	15.3	46.4	25.0	82.8	12.1	18.0
Pdk 11	28 Oct	14.2	24.2	4.7	14.5	48.2	24.8	79.7	11.8	18.7
Pdk 46	11Nov	12.2	29.4	5.0	11.1	43.9	24.3	83.9	12.0	11.9
Pdk 52	11Nov	12.0	32.1	5.5	11.1	40.7	22.7	84.9	11.8	12.7
Pdk 2	25Nov	13.6	33.0	5.9	7.7	40.6	26.9	80.6	11.0	13.4
Pdk 11	25Nov	13.1	29.4	5.0	6.0	45.1	26.1	74.3	10.4	15.8
Pdk 69	9Dec	14.8	28.1	5.1	12.6	46.0	23.1	82.5	12.0	13.8
Pdk 7	9 Dec	12.3	26.1	4.9	14.9	44.3	23.3	82.0	12.1	14.5

Central Southland

Description	Date	RPM	% prot	% Lipid	% SSS	% NDF	% ADF	OMD	MJME/kg DM	%DM
Pdk 6	25 Jun	12.2	31.2	5.6	11.6	44.9	21.9	>85	12.6	19.9
Pdk 26	25 Jun	9.8	28.6	5.2	14.2	44.1	24.4	81.3	12.0	19.6
Pdk 26	22 Jul	11.4	27.8	5.5	15.2	42.8	23.6	83.1	11.9	18.2
Pdk 6	22 Jul	13.0	27.0	5.3	14.3	45.6	23.4	82.4	12.1	19.9
Pdk 26	5 Aug	18.2	27.9	5.7	15.2	39.8	23.8	81.7	11.6	17.1
Pdk 6	5 Aug	13.6	32.4	5.9	14.4	37.4	22.3	>85	12.6	20.8
Pdk 21	19Aug	-	28.7	4.6	11.9	41.2	23.1	>85	12.3	19.3
Pdk 9	19Aug	11.6	30.1	5.1	13.1	41.1	22.1	>85	>12.7	21.8
Pdk 12	2 Sep	15.0	30.3	6.2	12.6	42.1	20.7	84.7	12.5	21.1
Pdk 3	2 Sep	15.5	25.2	6.0	17.5	40.0	21.0	>85	>12.7	21.9
Pdk 18	16Sep	18,4	29.6	5.4	19.7	45.7	24.5	81.7	11.7	19.3
Pdk 16	16Sep	18.0	28.1	5.8	13.3	43.4	22.5	84.1	12.2	19.7
Pdk 36	30Sep	10.3	22.1	4.9	17.1	48.1	23.4	82.9	12.2	21.1
Pdk 26	30Sep	8.8	28.2	5.6	14.9	44.9	22.2	>85	12.7	19.3
Pdk 19	14 Oct	15.8	20.3	4.4	24.1	37.9	22.1	>85	>12.7	22.5
Pdk 42	14 Oct	15.8	25.3	5.3	19.3	41.0	23.4	>85	>12.7	19.2
Pdk 46	28 Oct	16.8	23.2	5.0	18.4	36.2	23.1	83.2	11.9	18.9
Pdk 26	28 Oct	14.8	28.1	5.9	13.1	36.3	23.5	83.2	11.8	18.7
Pdk 18	11Nov	15.2	22.5	4.6	16.3	45.6	24.7	80.0	11.9	19.7
Pdk 43	11Nov	17.2	30.1	5.3	12.6	40.8	22.1	85.8	12.5	16.3
Pdk 33	25Nov	15.2	28.9	5.1	10.6	45.8	27.9	76.0	10.7	17.0
Pdk 8	25Nov	16.0	31.4	5.0	7.6	47.5	24.6	81.2	11.3	18.1
Pdk 46	9 Dec	*	24.3	4.5	17.4	44.6	24.1	83.9	12.4	18.2
Pdk 12	9 Dec	18.0	23.1	4.6	15.7	45.4	26.1	78.4	11.5	20.5

West Otago

Description	Date	RPM	% prot	% Lipid	% SSS	% NDF	% ADF	OMD	MJME/kg DM	%DM
Pdk 14	2 Jul	11.8	27.1	5.0	10.6	48.6	25.2	79.1	11.5	21.1
Pdk 26	2 Jul	14.2	27.4	5.2	13.3	43.3	21.5	84.0	12.4	20.7
Pdk 14	23 Jul	12.4	28.8	5.3	13.5	43.3	25.4	80.2	11.5	15.8
Pdk 26	23 Jul	15.2	30.5	5.4	11.3	44.7	23.5	82.8	11.8	14.2
Pdk 14	5 Aug	13.4	29.0	5.4	13.0	45.3	23.9	79.6	11.4	17.0
Pdk 26	5 Aug	18.2	29.1	5.6	12.9	41.5	24.1	81.5	11.7	15.9
Pdk 14	20Aug	13.4	25.6	4.8	15.2	43.7	25	81.5	11.9	21.2
Pdk 42	20Aug	23.0	22.1	4.8	17.7	44.4	22.2	>85	>12.7	17.3
Pdk 17	3 Sep	14.8	28.3	5.5	10.2	46.2	24.9	77.8	11.1	16.3
Pdk 42	3 Sep	11.3	22.3	5.4	17.4	43.4	21.3	>85	>12.7	18.6
Pdk 27	17Sep	14.2	29.4	5.9	12.0	44.6	23.5	84	12.3	19.8
Pdk 12	17Sep	13.7	29.6	5.7	11.5	47.1	23.4	83.3	12.1	18.9
Pdk 35	1 Oct	13.0	32.1	6.0	14.6	38.2	21.4	>85	12.6	14.2*
Pdk 2	1 Oct	14.6	30.4	6.3	14.2	40.0	20.9	>85	12.6	17.1
Pdk 27	15 Oct	14.2	30.5	5.8	14.3	38.7	23.3	>85	>12.7	19.0
Pdk 45	15 Oct	17.4	29.9	6.5	14.7	36.9	22.2	>85	>12.7	14.3
Pdk 14	29 Oct	16.0	31.9	5.5	10.3	40.0	22.2	86.1	12.0	17.1
Pdk 35	29 Oct	17.2	26.1	5.4	15.2	39.5	22.9	84.9	12.3	18.2
Pdk 23	12Nov	13.4	28.0	5.6	11.4	40.1	23.2	85.6	12.4	16.0
Pdk 44	12Nov	19.2	28.8	5.6	9.7	40.1	22.7	84.5	12.0	16.5
Pdk 18	26Nov	15.8	30.6	5.7	8.3	45.0	24.5	77.4	11.0	17.4
Pdk 31	26Nov	12.0	35.0	6.3	9.2	33.3	22.7	83.8	11.4	15.3
Pdk 46	10Dec	16.6	25.6	5.2	15.4	39.7	24.1	79.3	11.6	16.9
Pdk 18	10Dec	23.0	20.1	4.2	13.1	52.8	28.2	74.3	11.0	19.0

Northern

Southland

Description	Date	RPM	% prot	% Lipid	% SSS	% NDF	% ADF	OMD	MJME/kg DM	%DM
Pdk 18	2 Jul	9.4	25.8	4.9	15.7	44.0	22.8	84.3	12.3	18.4
Pdk 9	2 Jul	10.4	26.5	4.5	16.6	40.2	23.2	>85	12.4	15.0
Pdk 9	23 Jul	10.8	28.6	4.7	10.6	49.2	24.5	80.0	11.7	13.9
Pdk 18	23 Jul	9.4	23.7	4.5	16.6	46.5	25.1	81.2	11.7	15.0
Pdk 9	5 Aug	11.8	27.2	5.2	18.2	39.7	22.8	84.4	12.3	18.8
Pdk 18	20Aug	9.4	23.6	4.7	17.6	42.9	23.1	85	12.6	24.8
Pdk 14	20Aug	10	26.3	5.6	20.5	33.1	21.1	>85	>12.7	21.7
Pdk 4	3 Sep	12.8	30.0	5.7	8.9	49.1	22.5	78.7	11.7	19.5
Pdk 32	3 Sep	9.2	23.7	4.8	16.7	41.4	22.4	84.3	12.2	18.5
Pdk 12	17Sep	9.2	33.8	5.9	12.0	36.6	22.4	>85	12.3	14.2*
Pdk 8	17Sep	11.0	29.8	5.5	13.2	40.4	22.6	84.7	12.1	14.6*
Pdk 25	1 Oct	11.0	25.3	5.2	15.6	42.8	24.4	82.8	12.1	19.0
Pdk 18	15 Oct	11.6	24.8	5.0	19.7	42.8	22.4	>85	>12.7	20.0
Pdk 8	15 Oct	13.4	31.1	5.2	15.5	37.7	22.5	>85	>12.7	16.5
Pdk 21	29 Oct	13.2	32.2	5.8	11.9	37.9	24.0	82.9	11.8	16.0
Pdk 17	29 Oct	13.8	28.1	4.8	14.9	35.8	24.4	82.8	11.8	15.9
Pdk 9	12Nov	13.6	28.9	3.9	13.3	39.9	24.2	84.8	12.4	17.9
Pdk 6	12Nov	15.2	28.1	5.0	13.1	39.5	25.2	83.2	12.0	17.8
Pdk 26	26Nov	12.6	31.6	4.5	12.2	38.1	24.1	83.9	12.0	15.9
Pdk 2	26Nov	14.4	26.6	4.7	14.2	41.8	25.5	78.6	11.3	17.3
Pdk 5	10Dec	15.2	19.3	3.9	16.4	47.5	27.4	73.5	10.5	17.8
Pdk 29	10Dec	24.6	13.9	3.7	13.4	59.1	32.7	65.7	10.0	21.1

- * Pasture sample collected in wet conditions

Southland Monitor Farm Project

Weekly Update – 10 December 08

General Comments

Growth rates across the region have eased this week. The Demonstration farm continues to grow at a faster rate than the monitor farms. A higher average pasture cover and a significant proportion of the farm in new grass are the most likely contributors to the higher growth. Growth on the monitor farms and at Balclutha ranged between 37 and 56 kg DM/ha/day compared with 67 kg/day on the Demonstration farm. Growth on the monitor farms is similar to this time last year but about 30 kg DM/ha/day below the long-term Woodlands average. Soil temperatures have also dropped back about 1 °C in most regions after a week of cooler weather and rain.

Milk production has plateaued on most farms. The challenge will be to prevent further decline as pasture continues to harden off. Maintaining pasture quality through the next few weeks is critical in setting the farm up for summer.

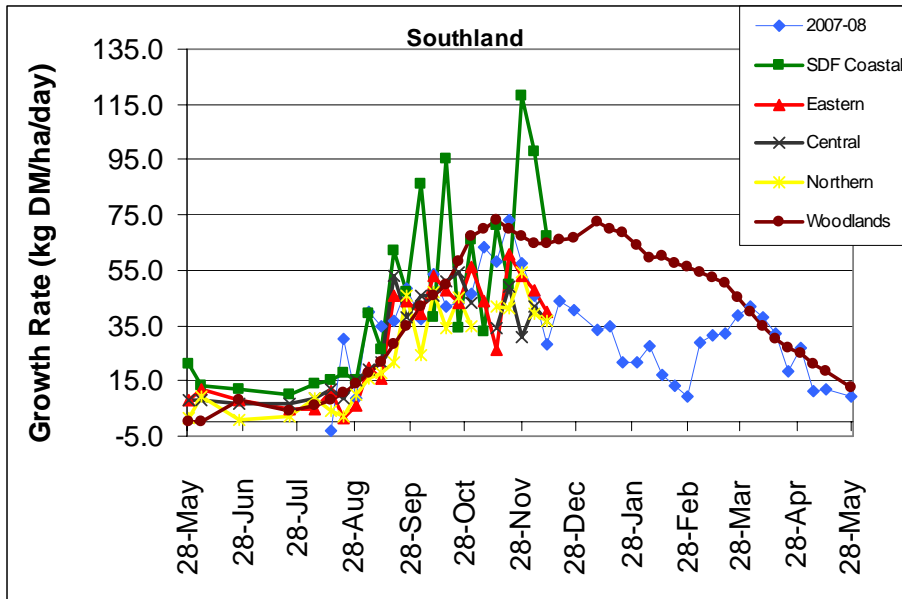
SDF management team update

With Christmas just around the corner AB will now be coming to an end thus reducing pressure on the farm. Now is a good time to meet with staff to review the season to date and put a summer plan in place. The DairyNZ HR tool kit can help with this and is now available free to levy payers. Order now from www.dairynz.co.nz or 0800 4 DairyNZ

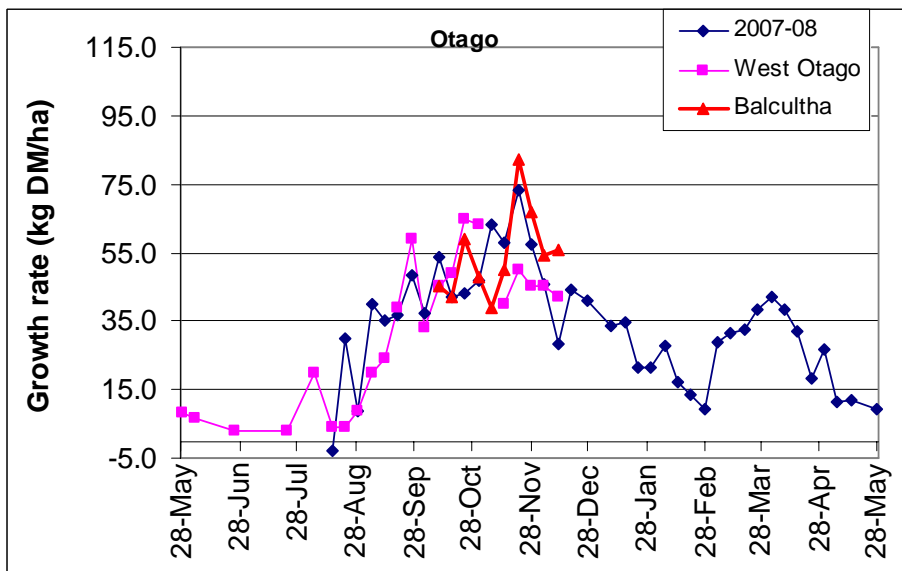
Farm Summary

	Demo Farm	Eastern	Central	Northern	West Otago	Telford
Average cover (kg DM/ha)	2240	2057	2364	2092	2196	2174
Rotation length (days)	22	25	25	17	18	28
Stocking rate	2.96	3.3	2.5	2.43	2.5	3.3
Milksolids kg/cow	1.50	1.89	2.00	1.86	2.03	1.75
Milksolids kg/ha	4.6	6.2	4.9	4.7	5.0	5.6
N (kg/ha)	63	34	30	10	41	94
Supplement (kg/cow/day)	0	0.75	1	0	0	0.5
Soil temperature (°C)	14.0	13.3	15.4	14.2	14.2	13.4
Growth Rate (kg DM/day)	67	40	37	37	42	56
Rainfall	38	30	34	30	22	16
Comments						

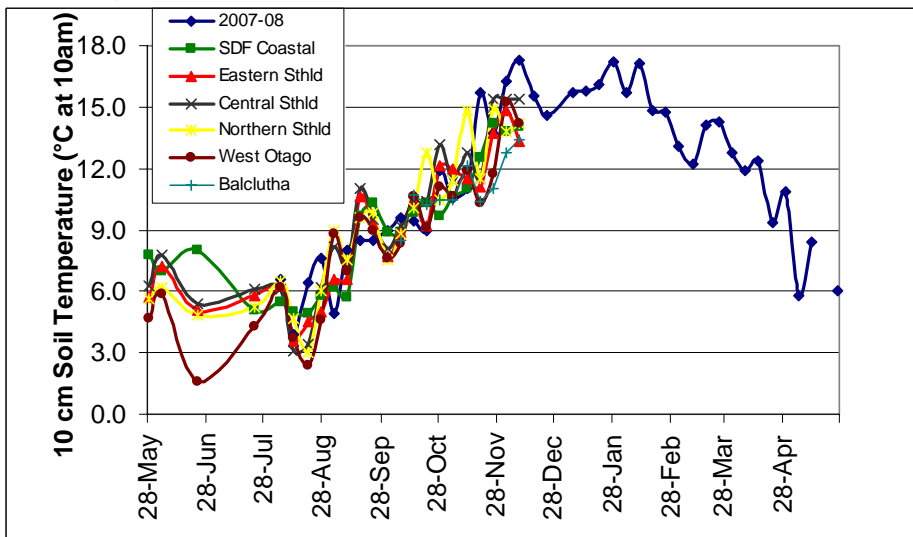
Pasture Growth Rates

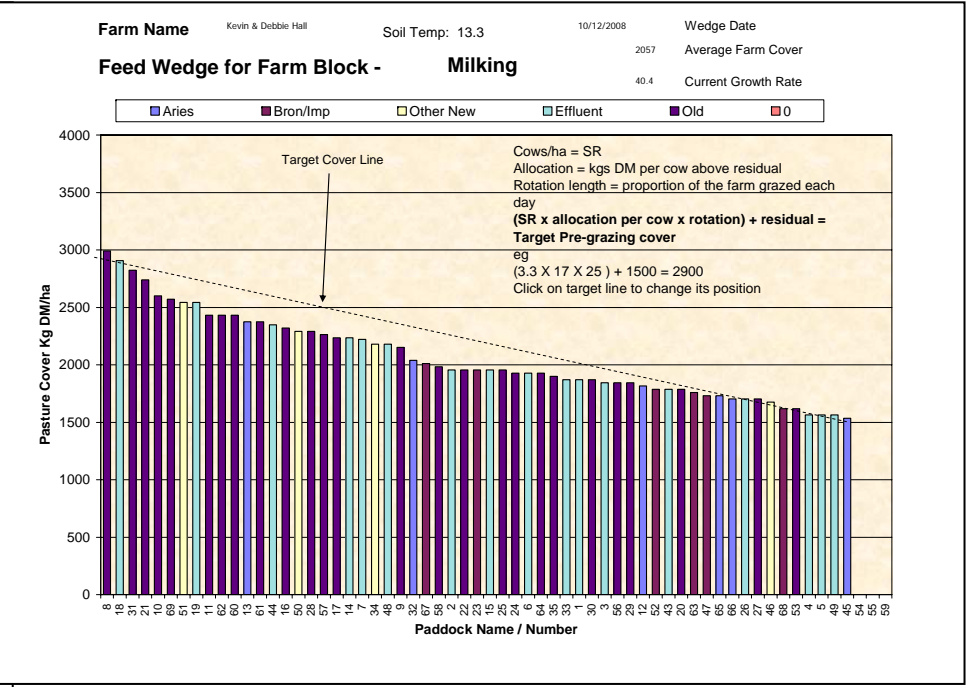
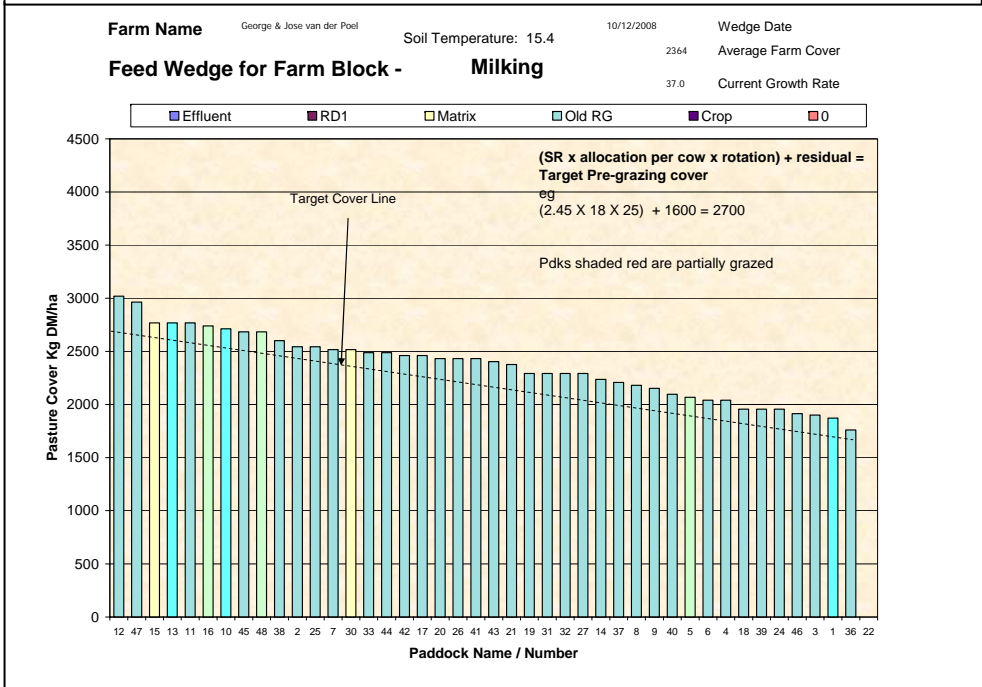
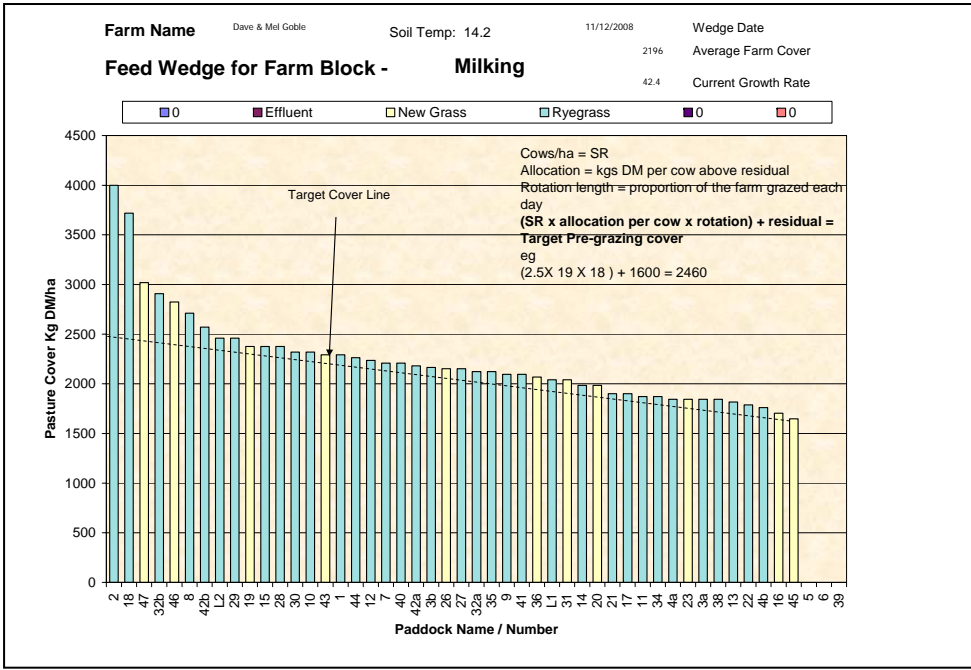
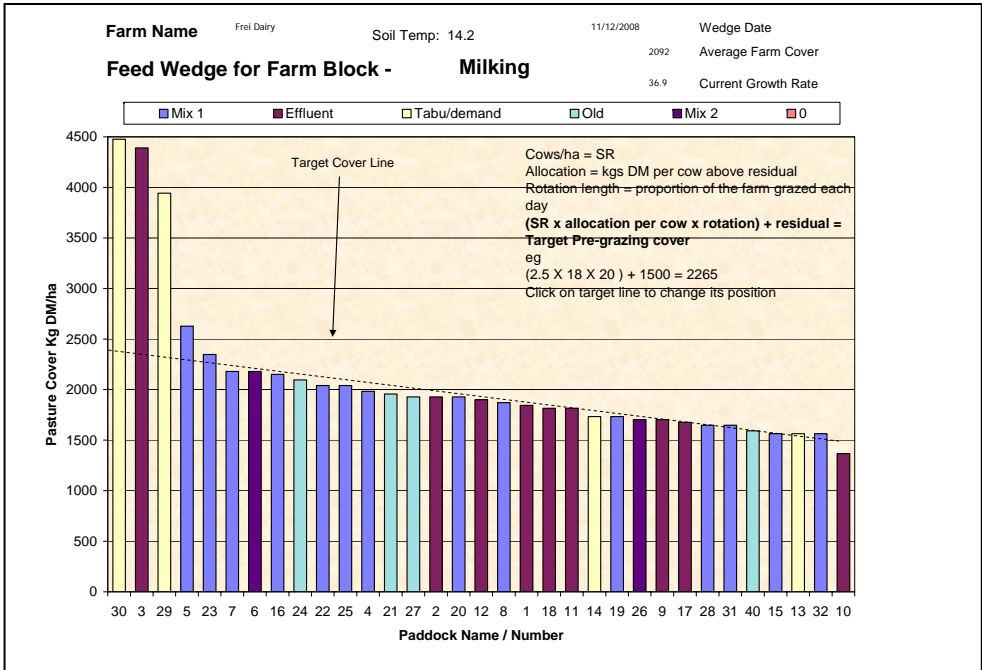


NB the Woodlands data is the long-term average from mature pastures at Woodlands measured using enclosure cages.



Soil Temperature





Pasture Quality

NOTE: We sample the paddocks immediately in front of the milkers, to height of 3.5cm (7 clicks on the rising plate meter). The RPM data in the table is the pre-grazing clicks recorded on the day of sampling.

Eastern Southland

Description	Date	RPM	% prot	% Lipid	% SSS	% NDF	% ADF	OMD	MJME/kg DM	%DM
Pdk 16	25Jun	13.8	24.3	3.9	15.4	49.8	28.2	80.6	11.8	16.7
Pdk 43	25 Jun	15.8	26.2	4.8	12.1	50.7	27.2	78.2	11.3	15.9
Pdk 43	22 Jul	18.8	24.8	4.4	14.1	52	26	78.6	11.5	16.0
Pdk 16	22 Jul	13.6	26.4	4.7	14.5	48.0	24.7	82.7	11.9	17.7
Pdk 43	5 Aug	13.1	26.1	5.3	15.5	44.0	24.0	80.3	11.5	15.1
Pdk 16	5 Aug	13.6	25.2	4.8	16.9	40.9	25.4	81.3	11.6	15.0
Pdk 16	19Aug	13.6	24.3	4.3	15.5	42.7	26.1	80.7	11.6	15.5
Pdk 50	19Aug	16.2	26.9	5.3	15.1	42.4	24.6	82	12	14.2
Pdk 52	2 Sep	16.0	23.3	4.9	16.1	43.1	24.4	80.1	11.6	22.0
Pdk 2	2 Sep	14.0	26.6	5.8	11.4	45.3	24.2	78.2	11.2	19.2
Pdk 1	16Sep	9.8	26.1	5.9	10.5	47.7	25.8	78	11.3	19.7
Pdk 7	16Sep	13.4	24.6	5.6	13.2	47.0	24.6	79.3	11.5	19.8
Pdk 47	30Sep	12.8	33.3	5.2	11.0	45.1	22.3	>85	>12.7	15.8
Pdk 64	30Sep	15.0	28.8	5.2	14.6	44.8	24.1	84.9	12.5	16.4
Pdk 57	14 Oct	14.0	30.3	6.1	12.5	43.7	24.2	82.0	11.8	18.5
Pdk 30	14 Oct	14.4	33.1	5.7	13.4	41.0	24.0	84.6	12.3	17.5
Pdk 43	28 Oct	17.2	25.6	4.9	15.3	46.4	25.0	82.8	12.1	18.0
Pdk 11	28 Oct	14.2	24.2	4.7	14.5	48.2	24.8	79.7	11.8	18.7
Pdk 46	11Nov	12.2	29.4	5.0	11.1	43.9	24.3	83.9	12.0	11.9
Pdk 52	11Nov	12.0	32.1	5.5	11.1	40.7	22.7	84.9	11.8	12.7
Pdk 2	25Nov	13.6	33.0	5.9	7.7	40.6	26.9	80.6	11.0	13.4
Pdk 11	25Nov	13.1	29.4	5.0	6.0	45.1	26.1	74.3	10.4	15.8

Central Southland

Description	Date	RPM	% prot	% Lipid	% SSS	% NDF	% ADF	OMD	MJME/kg DM	%DM
Pdk 6	25 Jun	12.2	31.2	5.6	11.6	44.9	21.9	>85	12.6	19.9
Pdk 26	25 Jun	9.8	28.6	5.2	14.2	44.1	24.4	81.3	12.0	19.6
Pdk 26	22 Jul	11.4	27.8	5.5	15.2	42.8	23.6	83.1	11.9	18.2
Pdk 6	22 Jul	13.0	27.0	5.3	14.3	45.6	23.4	82.4	12.1	19.9
Pdk 26	5 Aug	18.2	27.9	5.7	15.2	39.8	23.8	81.7	11.6	17.1
Pdk 6	5 Aug	13.6	32.4	5.9	14.4	37.4	22.3	>85	12.6	20.8
Pdk 21	19Aug	-	28.7	4.6	11.9	41.2	23.1	>85	12.3	19.3
Pdk 9	19Aug	11.6	30.1	5.1	13.1	41.1	22.1	>85	>12.7	21.8
Pdk 12	2 Sep	15.0	30.3	6.2	12.6	42.1	20.7	84.7	12.5	21.1
Pdk 3	2 Sep	15.5	25.2	6.0	17.5	40.0	21.0	>85	>12.7	21.9
Pdk 18	16Sep	18.4	29.6	5.4	19.7	45.7	24.5	81.7	11.7	19.3
Pdk 16	16Sep	18.0	28.1	5.8	13.3	43.4	22.5	84.1	12.2	19.7
Pdk 36	30Sep	10.3	22.1	4.9	17.1	48.1	23.4	82.9	12.2	21.1
Pdk 26	30Sep	8.8	28.2	5.6	14.9	44.9	22.2	>85	12.7	19.3
Pdk 19	14 Oct	15.8	20.3	4.4	24.1	37.9	22.1	>85	>12.7	22.5
Pdk 42	14 Oct	15.8	25.3	5.3	19.3	41.0	23.4	>85	>12.7	19.2
Pdk 46	28 Oct	16.8	23.2	5.0	18.4	36.2	23.1	83.2	11.9	18.9
Pdk 26	28 Oct	14.8	28.1	5.9	13.1	36.3	23.5	83.2	11.8	18.7
Pdk 18	11Nov	15.2	22.5	4.6	16.3	45.6	24.7	80.0	11.9	19.7
Pdk 43	11Nov	17.2	30.1	5.3	12.6	40.8	22.1	85.8	12.5	16.3
Pdk 33	25Nov	15.2	28.9	5.1	10.6	45.8	27.9	76.0	10.7	17.0
Pdk 8	25Nov	16.0	31.4	5.0	7.6	47.5	24.6	81.2	11.3	18.1

West Otago

Description	Date	RPM	% prot	% Lipid	% SSS	% NDF	% ADF	OMD	MJME/kg DM	%DM
Pdk 14	2 Jul	11.8	27.1	5.0	10.6	48.6	25.2	79.1	11.5	21.1
Pdk 26	2 Jul	14.2	27.4	5.2	13.3	43.3	21.5	84.0	12.4	20.7
Pdk 14	23 Jul	12.4	28.8	5.3	13.5	43.3	25.4	80.2	11.5	15.8
Pdk 26	23 Jul	15.2	30.5	5.4	11.3	44.7	23.5	82.8	11.8	14.2
Pdk 14	5 Aug	13.4	29.0	5.4	13.0	45.3	23.9	79.6	11.4	17.0
Pdk 26	5 Aug	18.2	29.1	5.6	12.9	41.5	24.1	81.5	11.7	15.9
Pdk 14	20Aug	13.4	25.6	4.8	15.2	43.7	25	81.5	11.9	21.2
Pdk 42	20Aug	23.0	22.1	4.8	17.7	44.4	22.2	>85	>12.7	17.3
Pdk 17	3 Sep	14.8	28.3	5.5	10.2	46.2	24.9	77.8	11.1	16.3
Pdk 42	3 Sep	11.3	22.3	5.4	17.4	43.4	21.3	>85	>12.7	18.6
Pdk 27	17Sep	14.2	29.4	5.9	12.0	44.6	23.5	84	12.3	19.8
Pdk 12	17Sep	13.7	29.6	5.7	11.5	47.1	23.4	83.3	12.1	18.9
Pdk 35	1 Oct	13.0	32.1	6.0	14.6	38.2	21.4	>85	12.6	14.2*
Pdk 2	1 Oct	14.6	30.4	6.3	14.2	40.0	20.9	>85	12.6	17.1
Pdk 27	15 Oct	14.2	30.5	5.8	14.3	38.7	23.3	>85	>12.7	19.0
Pdk 45	15 Oct	17.4	29.9	6.5	14.7	36.9	22.2	>85	>12.7	14.3
Pdk 14	29 Oct	16.0	31.9	5.5	10.3	40.0	22.2	86.1	12.0	17.1
Pdk 35	29 Oct	17.2	26.1	5.4	15.2	39.5	22.9	84.9	12.3	18.2
Pdk 23	12Nov	13.4	28.0	5.6	11.4	40.1	23.2	85.6	12.4	16.0
Pdk 44	12Nov	19.2	28.8	5.6	9.7	40.1	22.7	84.5	12.0	16.5
Pdk 18	26Nov	15.8	30.6	5.7	8.3	45.0	24.5	77.4	11.0	17.4
Pdk 31	26Nov	12.0	35.0	6.3	9.2	33.3	22.7	83.8	11.4	15.3

Northern

Southland

Description	Date	RPM	% prot	% Lipid	% SSS	% NDF	% ADF	OMD	MJME/kg DM	%DM
Pdk 18	2 Jul	9.4	25.8	4.9	15.7	44.0	22.8	84.3	12.3	18.4
Pdk 9	2 Jul	10.4	26.5	4.5	16.6	40.2	23.2	>85	12.4	15.0
Pdk 9	23 Jul	10.8	28.6	4.7	10.6	49.2	24.5	80.0	11.7	13.9
Pdk 18	23 Jul	9.4	23.7	4.5	16.6	46.5	25.1	81.2	11.7	15.0
Pdk 9	5 Aug	11.8	27.2	5.2	18.2	39.7	22.8	84.4	12.3	18.8
Pdk 18	20Aug	9.4	23.6	4.7	17.6	42.9	23.1	85	12.6	24.8
Pdk 14	20Aug	10	26.3	5.6	20.5	33.1	21.1	>85	>12.7	21.7
Pdk 4	3 Sep	12.8	30.0	5.7	8.9	49.1	22.5	78.7	11.7	19.5
Pdk 32	3 Sep	9.2	23.7	4.8	16.7	41.4	22.4	84.3	12.2	18.5
Pdk 12	17Sep	9.2	33.8	5.9	12.0	36.6	22.4	>85	12.3	14.2*
Pdk 8	17Sep	11.0	29.8	5.5	13.2	40.4	22.6	84.7	12.1	14.6*
Pdk 25	1 Oct	11.0	25.3	5.2	15.6	42.8	24.4	82.8	12.1	19.0
Pdk 18	15 Oct	11.6	24.8	5.0	19.7	42.8	22.4	>85	>12.7	20.0
Pdk 8	15 Oct	13.4	31.1	5.2	15.5	37.7	22.5	>85	>12.7	16.5
Pdk 21	29 Oct	13.2	32.2	5.8	11.9	37.9	24.0	82.9	11.8	16.0
Pdk 17	29 Oct	13.8	28.1	4.8	14.9	35.8	24.4	82.8	11.8	15.9
Pdk 9	12Nov	13.6	28.9	3.9	13.3	39.9	24.2	84.8	12.4	17.9
Pdk 6	12Nov	15.2	28.1	5.0	13.1	39.5	25.2	83.2	12.0	17.8
Pdk 26	26Nov	12.6	31.6	4.5	12.2	38.1	24.1	83.9	12.0	15.9
Pdk 2	26Nov	14.4	26.6	4.7	14.2	41.8	25.5	78.6	11.3	17.3

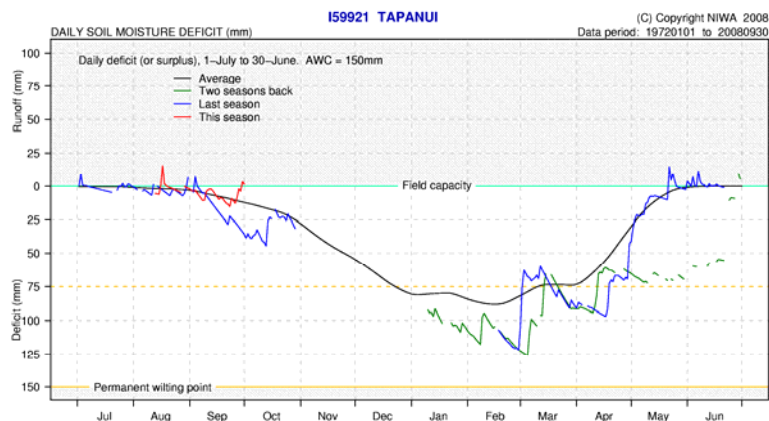
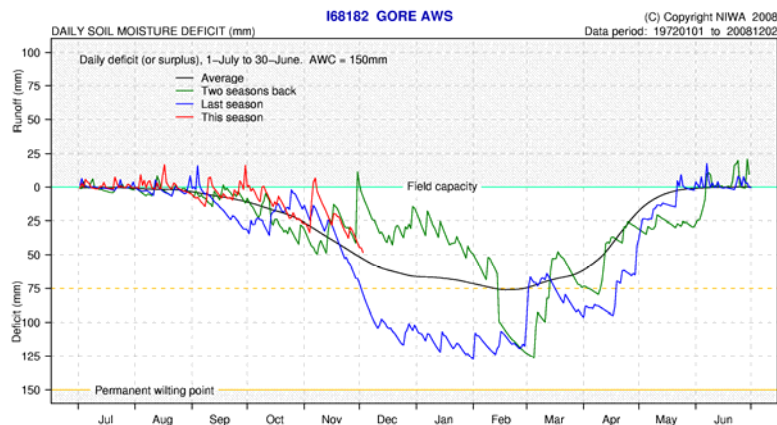
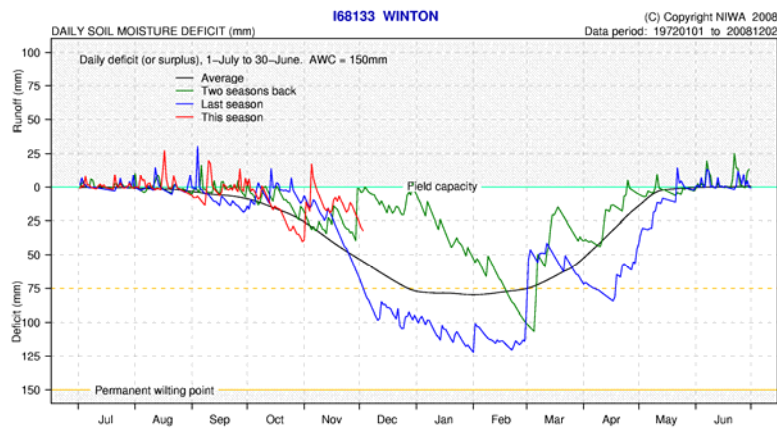
- * Pasture sample collected in wet conditions

Southland Monitor Farm Project

Weekly Update – 3 December 08

General Comments

Growth rate across the regions has again been quite variable this week. The Demonstration farm continues to grow at a faster rate than the monitor farms. A higher average pasture cover and a significant proportion of the farm in new grass are the most likely contributors to the higher growth. Growth on the monitor farms and at Balclutha ranged between 39 and 54 kg DM/ha/day compared with 98 kg/day on the Demonstration farm. Soil temperatures are similar to this time last year. Soil moisture levels have started to decline (See red line of graphs below) however are still higher than the corresponding time last season.



Pasture quality has also declined in the last 2 weeks. The poorest quality pasture from last week was only 10.4 ME, with the range being 10.4 to 12.0 MJ ME/kg DM. Only one sample was recorded at 12 ME which contrasts previous months when the majority of samples were greater than 12 ME. Crude protein concentrations were high on all farms.

Milk production has continued to decline with only one farm still producing 2 kg MS/cow/day.

SDF management team update

Soil moisture levels across the region are now trending downwards. While they are still higher than the corresponding period in 2007-08 it is important to monitor pasture growth to allow informed decisions on rotation length and conservation and avoid early deficits if conditions remain dry. Hopefully you all have your rosters confirmed for the festive season so staff can plan time off with family and friends.

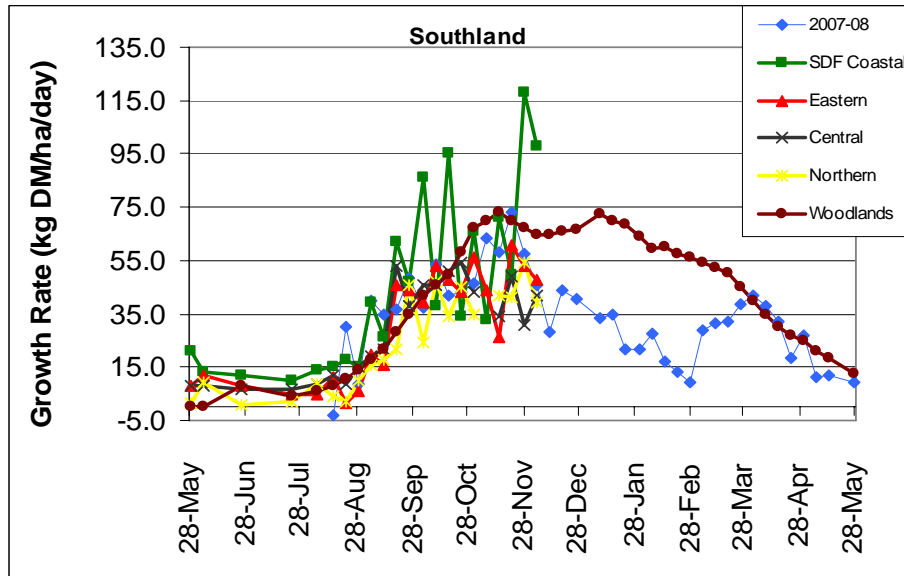
Telford Update

Pasture covers are holding, we are continuing with Urea after cows to continue grass growth and to provide buffer encase clay downs start to dry out.

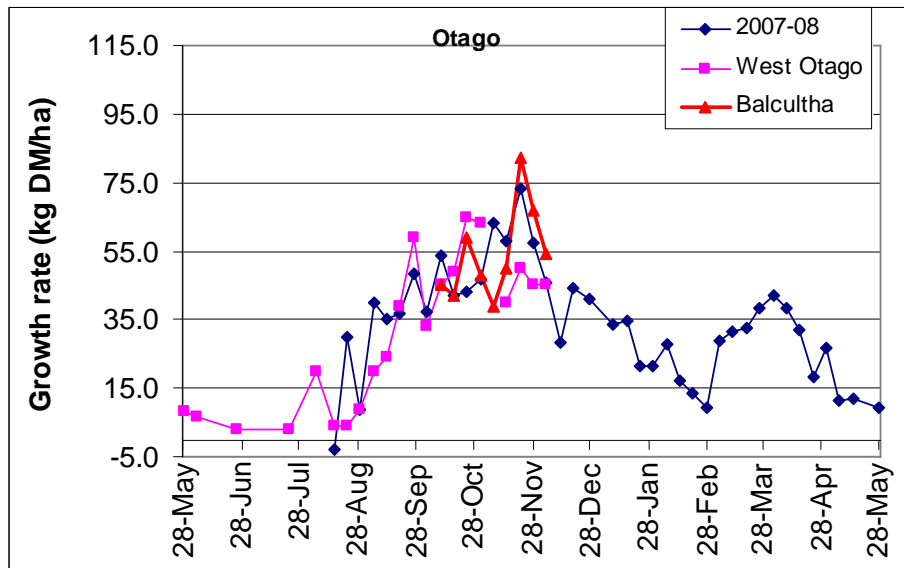
Farm Summary

	Demo Farm	Eastern	Central	Northern	West Otago	Telford
Average cover (kg DM/ha)	2883	2092	2377	2142	2200	2235
Rotation length (days)	22	23	25	26	18	25
Stocking rate	2.96	3.3	2.5	2.5	2.5	3.2
Milksolids kg/cow	1.50	1.86	2.02	1.91	1.97	1.75
Milksolids kg/ha	4.3	6.2	4.9	4.8	4.9	5.6
N (kg/ha)	63	33	30	10	27	90
Supplement (kg/cow/day)	0	1	1	0	0	1
Soil temperature (°C)	13.8	14.8	15.4	13.8	15.2	12.8
Growth Rate (kg DM/day)	98	48	42	39	45	54
Rainfall	8	10	28	6	3	0
Comments	20 pdks shut			20 ha shut	3.2 ha shut	

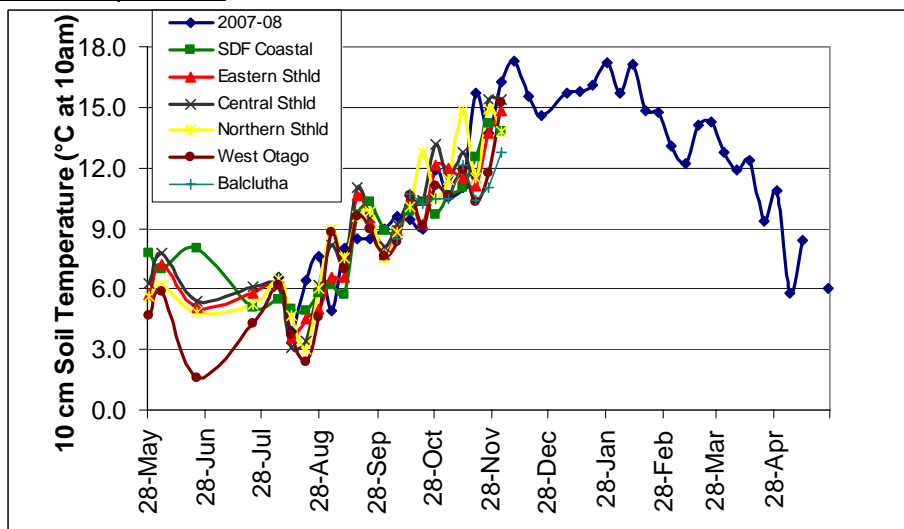
Pasture Growth Rates

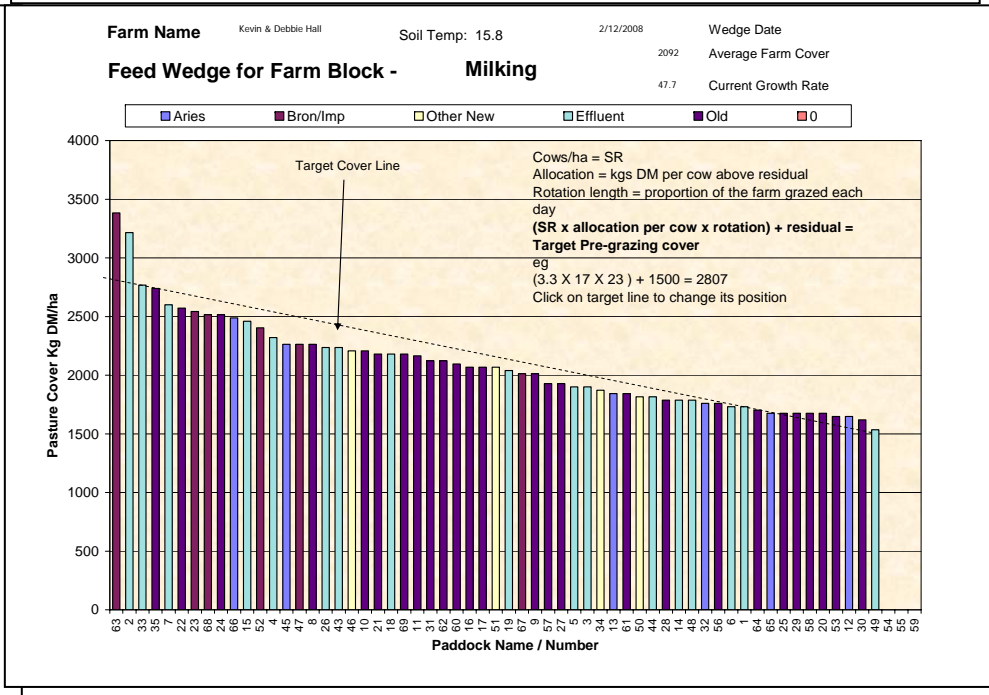
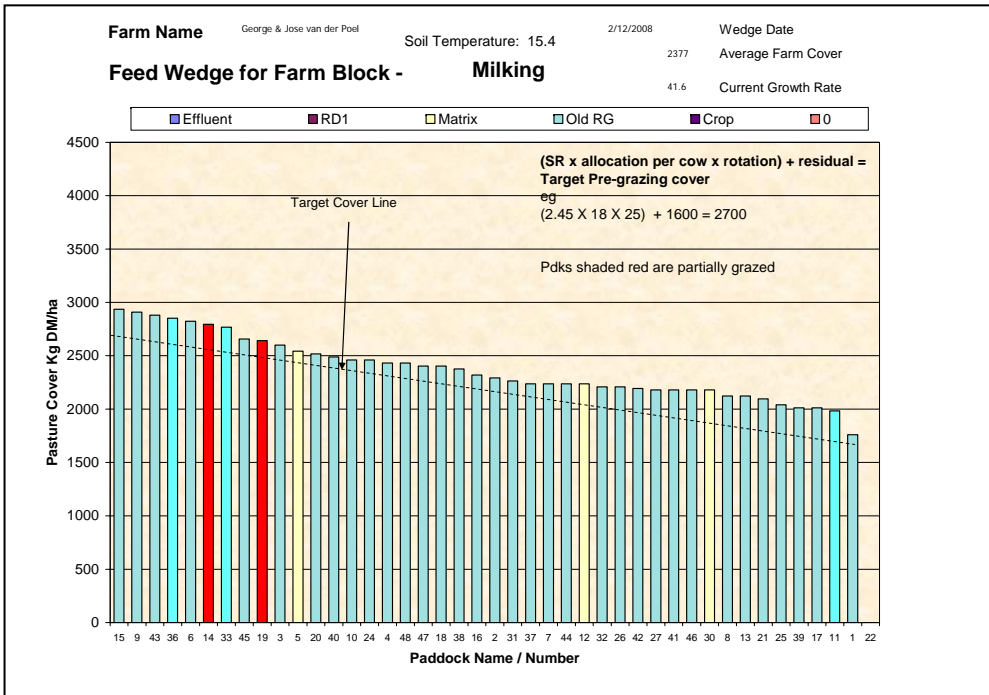
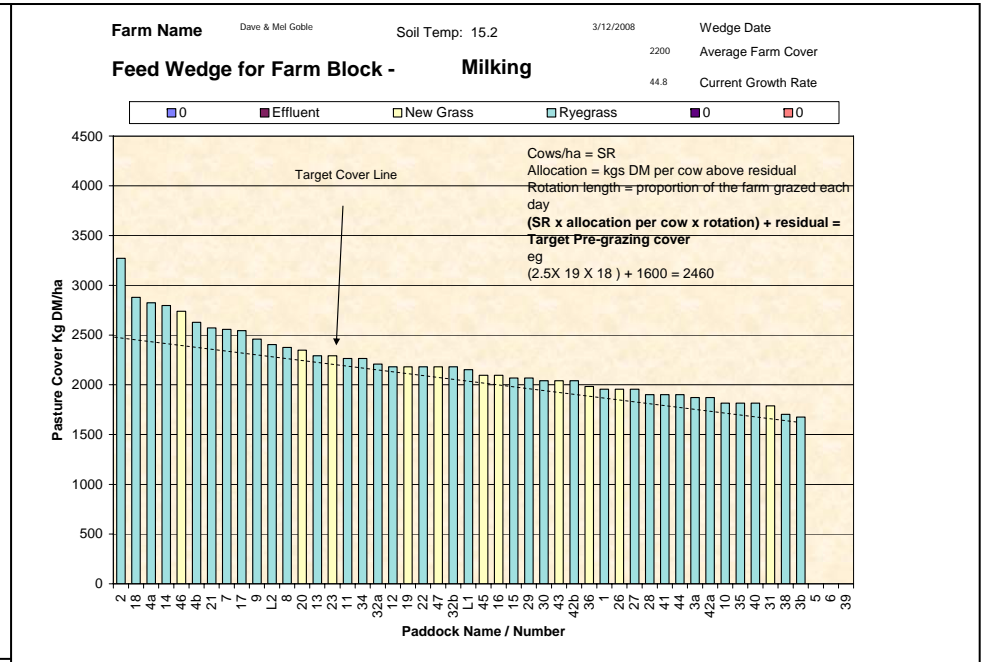
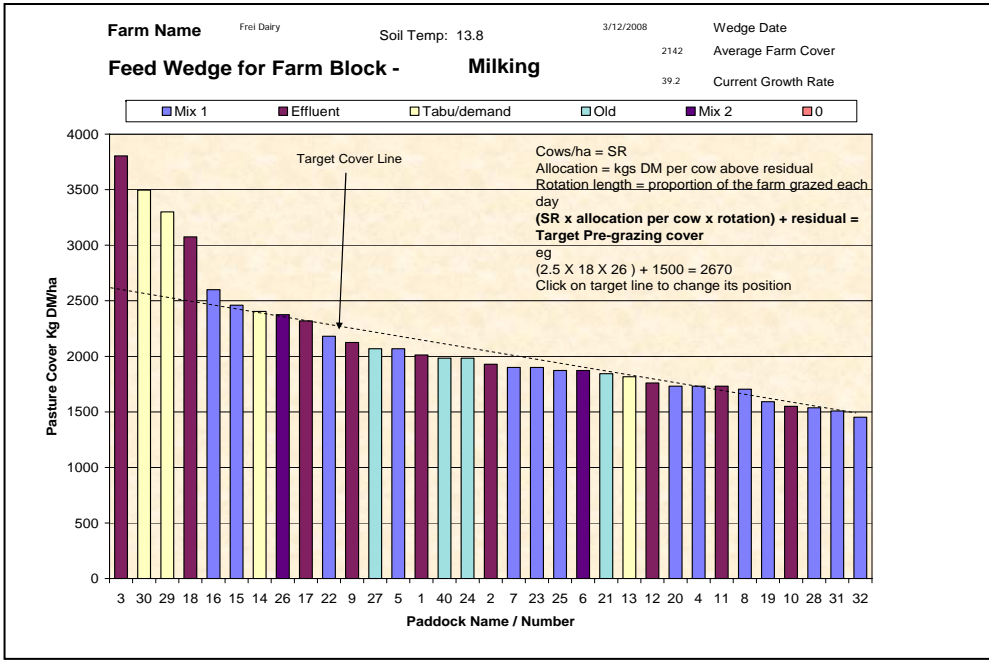


NB the Woodlands data is the long-term average from mature pastures at Woodlands measured using enclosure cages.



Soil Temperature





Pasture Quality

NOTE: We sample the paddocks immediately in front of the milkers, to height of 3.5cm (7 clicks on the rising plate meter). The RPM data in the table is the pre-grazing clicks recorded on the day of sampling.

Eastern Southland

Description	Date	RPM	% prot	% Lipid	% SSS	% NDF	% ADF	OMD	MJME/kg DM	%DM
Pdk 16	25Jun	13.8	24.3	3.9	15.4	49.8	28.2	80.6	11.8	16.7
Pdk 43	25 Jun	15.8	26.2	4.8	12.1	50.7	27.2	78.2	11.3	15.9
Pdk 43	22 Jul	18.8	24.8	4.4	14.1	52	26	78.6	11.5	16.0
Pdk 16	22 Jul	13.6	26.4	4.7	14.5	48.0	24.7	82.7	11.9	17.7
Pdk 43	5 Aug	13.1	26.1	5.3	15.5	44.0	24.0	80.3	11.5	15.1
Pdk 16	5 Aug	13.6	25.2	4.8	16.9	40.9	25.4	81.3	11.6	15.0
Pdk 16	19Aug	13.6	24.3	4.3	15.5	42.7	26.1	80.7	11.6	15.5
Pdk 50	19Aug	16.2	26.9	5.3	15.1	42.4	24.6	82	12	14.2
Pdk 52	2 Sep	16.0	23.3	4.9	16.1	43.1	24.4	80.1	11.6	22.0
Pdk 2	2 Sep	14.0	26.6	5.8	11.4	45.3	24.2	78.2	11.2	19.2
Pdk 1	16Sep	9.8	26.1	5.9	10.5	47.7	25.8	78	11.3	19.7
Pdk 7	16Sep	13.4	24.6	5.6	13.2	47.0	24.6	79.3	11.5	19.8
Pdk 47	30Sep	12.8	33.3	5.2	11.0	45.1	22.3	>85	>12.7	15.8
Pdk 64	30Sep	15.0	28.8	5.2	14.6	44.8	24.1	84.9	12.5	16.4
Pdk 57	14 Oct	14.0	30.3	6.1	12.5	43.7	24.2	82.0	11.8	18.5
Pdk 30	14 Oct	14.4	33.1	5.7	13.4	41.0	24.0	84.6	12.3	17.5
Pdk 43	28 Oct	17.2	25.6	4.9	15.3	46.4	25.0	82.8	12.1	18.0
Pdk 11	28 Oct	14.2	24.2	4.7	14.5	48.2	24.8	79.7	11.8	18.7
Pdk 46	11Nov	12.2	29.4	5.0	11.1	43.9	24.3	83.9	12.0	11.9
Pdk 52	11Nov	12.0	32.1	5.5	11.1	40.7	22.7	84.9	11.8	12.7
Pdk 2	25Nov	13.6	33.0	5.9	7.7	40.6	26.9	80.6	11.0	13.4
Pdk 11	25Nov	13.1	29.4	5.0	6.0	45.1	26.1	74.3	10.4	15.8

Central Southland

Description	Date	RPM	% prot	% Lipid	% SSS	% NDF	% ADF	OMD	MJME/kg DM	%DM
Pdk 6	25 Jun	12.2	31.2	5.6	11.6	44.9	21.9	>85	12.6	19.9
Pdk 26	25 Jun	9.8	28.6	5.2	14.2	44.1	24.4	81.3	12.0	19.6
Pdk 26	22 Jul	11.4	27.8	5.5	15.2	42.8	23.6	83.1	11.9	18.2
Pdk 6	22 Jul	13.0	27.0	5.3	14.3	45.6	23.4	82.4	12.1	19.9
Pdk 26	5 Aug	18.2	27.9	5.7	15.2	39.8	23.8	81.7	11.6	17.1
Pdk 6	5 Aug	13.6	32.4	5.9	14.4	37.4	22.3	>85	12.6	20.8
Pdk 21	19Aug	-	28.7	4.6	11.9	41.2	23.1	>85	12.3	19.3
Pdk 9	19Aug	11.6	30.1	5.1	13.1	41.1	22.1	>85	>12.7	21.8
Pdk 12	2 Sep	15.0	30.3	6.2	12.6	42.1	20.7	84.7	12.5	21.1
Pdk 3	2 Sep	15.5	25.2	6.0	17.5	40.0	21.0	>85	>12.7	21.9
Pdk 18	16Sep	18.4	29.6	5.4	19.7	45.7	24.5	81.7	11.7	19.3
Pdk 16	16Sep	18.0	28.1	5.8	13.3	43.4	22.5	84.1	12.2	19.7
Pdk 36	30Sep	10.3	22.1	4.9	17.1	48.1	23.4	82.9	12.2	21.1
Pdk 26	30Sep	8.8	28.2	5.6	14.9	44.9	22.2	>85	12.7	19.3
Pdk 19	14 Oct	15.8	20.3	4.4	24.1	37.9	22.1	>85	>12.7	22.5
Pdk 42	14 Oct	15.8	25.3	5.3	19.3	41.0	23.4	>85	>12.7	19.2
Pdk 46	28 Oct	16.8	23.2	5.0	18.4	36.2	23.1	83.2	11.9	18.9
Pdk 26	28 Oct	14.8	28.1	5.9	13.1	36.3	23.5	83.2	11.8	18.7
Pdk 18	11Nov	15.2	22.5	4.6	16.3	45.6	24.7	80.0	11.9	19.7
Pdk 43	11Nov	17.2	30.1	5.3	12.6	40.8	22.1	85.8	12.5	16.3
Pdk 33	25Nov	15.2	28.9	5.1	10.6	45.8	27.9	76.0	10.7	17.0
Pdk 8	25Nov	16.0	31.4	5.0	7.6	47.5	24.6	81.2	11.3	18.1

West Otago

Description	Date	RPM	% prot	% Lipid	% SSS	% NDF	% ADF	OMD	MJME/kg DM	%DM
Pdk 14	2 Jul	11.8	27.1	5.0	10.6	48.6	25.2	79.1	11.5	21.1
Pdk 26	2 Jul	14.2	27.4	5.2	13.3	43.3	21.5	84.0	12.4	20.7
Pdk 14	23 Jul	12.4	28.8	5.3	13.5	43.3	25.4	80.2	11.5	15.8
Pdk 26	23 Jul	15.2	30.5	5.4	11.3	44.7	23.5	82.8	11.8	14.2
Pdk 14	5 Aug	13.4	29.0	5.4	13.0	45.3	23.9	79.6	11.4	17.0
Pdk 26	5 Aug	18.2	29.1	5.6	12.9	41.5	24.1	81.5	11.7	15.9
Pdk 14	20Aug	13.4	25.6	4.8	15.2	43.7	25	81.5	11.9	21.2
Pdk 42	20Aug	23.0	22.1	4.8	17.7	44.4	22.2	>85	>12.7	17.3
Pdk 17	3 Sep	14.8	28.3	5.5	10.2	46.2	24.9	77.8	11.1	16.3
Pdk 42	3 Sep	11.3	22.3	5.4	17.4	43.4	21.3	>85	>12.7	18.6
Pdk 27	17Sep	14.2	29.4	5.9	12.0	44.6	23.5	84	12.3	19.8
Pdk 12	17Sep	13.7	29.6	5.7	11.5	47.1	23.4	83.3	12.1	18.9
Pdk 35	1 Oct	13.0	32.1	6.0	14.6	38.2	21.4	>85	12.6	14.2*
Pdk 2	1 Oct	14.6	30.4	6.3	14.2	40.0	20.9	>85	12.6	17.1
Pdk 27	15 Oct	14.2	30.5	5.8	14.3	38.7	23.3	>85	>12.7	19.0
Pdk 45	15 Oct	17.4	29.9	6.5	14.7	36.9	22.2	>85	>12.7	14.3
Pdk 14	29 Oct	16.0	31.9	5.5	10.3	40.0	22.2	86.1	12.0	17.1
Pdk 35	29 Oct	17.2	26.1	5.4	15.2	39.5	22.9	84.9	12.3	18.2
Pdk 23	12Nov	13.4	28.0	5.6	11.4	40.1	23.2	85.6	12.4	16.0
Pdk 44	12Nov	19.2	28.8	5.6	9.7	40.1	22.7	84.5	12.0	16.5
Pdk 18	26Nov	15.8	30.6	5.7	8.3	45.0	24.5	77.4	11.0	17.4
Pdk 31	26Nov	12.0	35.0	6.3	9.2	33.3	22.7	83.8	11.4	15.3

Northern

Southland

Description	Date	RPM	% prot	% Lipid	% SSS	% NDF	% ADF	OMD	MJME/kg DM	%DM
Pdk 18	2 Jul	9.4	25.8	4.9	15.7	44.0	22.8	84.3	12.3	18.4
Pdk 9	2 Jul	10.4	26.5	4.5	16.6	40.2	23.2	>85	12.4	15.0
Pdk 9	23 Jul	10.8	28.6	4.7	10.6	49.2	24.5	80.0	11.7	13.9
Pdk 18	23 Jul	9.4	23.7	4.5	16.6	46.5	25.1	81.2	11.7	15.0
Pdk 9	5 Aug	11.8	27.2	5.2	18.2	39.7	22.8	84.4	12.3	18.8
Pdk 18	20Aug	9.4	23.6	4.7	17.6	42.9	23.1	85	12.6	24.8
Pdk 14	20Aug	10	26.3	5.6	20.5	33.1	21.1	>85	>12.7	21.7
Pdk 4	3 Sep	12.8	30.0	5.7	8.9	49.1	22.5	78.7	11.7	19.5
Pdk 32	3 Sep	9.2	23.7	4.8	16.7	41.4	22.4	84.3	12.2	18.5
Pdk 12	17Sep	9.2	33.8	5.9	12.0	36.6	22.4	>85	12.3	14.2*
Pdk 8	17Sep	11.0	29.8	5.5	13.2	40.4	22.6	84.7	12.1	14.6*
Pdk 25	1 Oct	11.0	25.3	5.2	15.6	42.8	24.4	82.8	12.1	19.0
Pdk 18	15 Oct	11.6	24.8	5.0	19.7	42.8	22.4	>85	>12.7	20.0
Pdk 8	15 Oct	13.4	31.1	5.2	15.5	37.7	22.5	>85	>12.7	16.5
Pdk 21	29 Oct	13.2	32.2	5.8	11.9	37.9	24.0	82.9	11.8	16.0
Pdk 17	29 Oct	13.8	28.1	4.8	14.9	35.8	24.4	82.8	11.8	15.9
Pdk 9	12Nov	13.6	28.9	3.9	13.3	39.9	24.2	84.8	12.4	17.9
Pdk 6	12Nov	15.2	28.1	5.0	13.1	39.5	25.2	83.2	12.0	17.8
Pdk 26	26Nov	12.6	31.6	4.5	12.2	38.1	24.1	83.9	12.0	15.9
Pdk 2	26Nov	14.4	26.6	4.7	14.2	41.8	25.5	78.6	11.3	17.3

- * Pasture sample collected in wet conditions