

Southland Monitor Farm Project

Weekly Update – 27 February 2008

General Comments

Soil temperatures have remained relatively constant in the last week and negligible rain fell across the region. Growth has continued to decline on all the monitor farms and is now below 20 kg DM/day. Growth from Woodlands for the fortnight to 22 February was 27.5 kg DM/day. The current period of dry weather has resulted in growth rates lower than those experienced during the 1998-1999 drought (Figure 1) and they have occurred earlier in the season. Production is continuing to hold on all farms however average pasture cover continues to decline as demand exceeds growth and insufficient supplement is available to fill the deficit (Feed wedges on last page). Pasture quality from samples collected last week ranged from 10.1 MJME/kg DM in northern Southland to 11.7 MJME in central Southland (see tables below). Crude protein of all samples was greater than 20%.

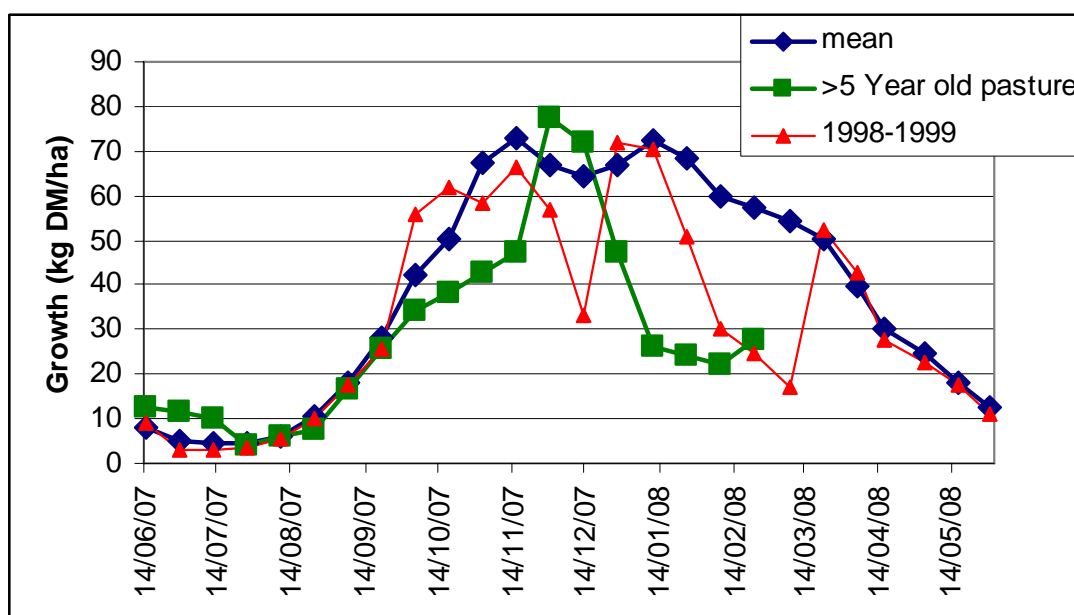
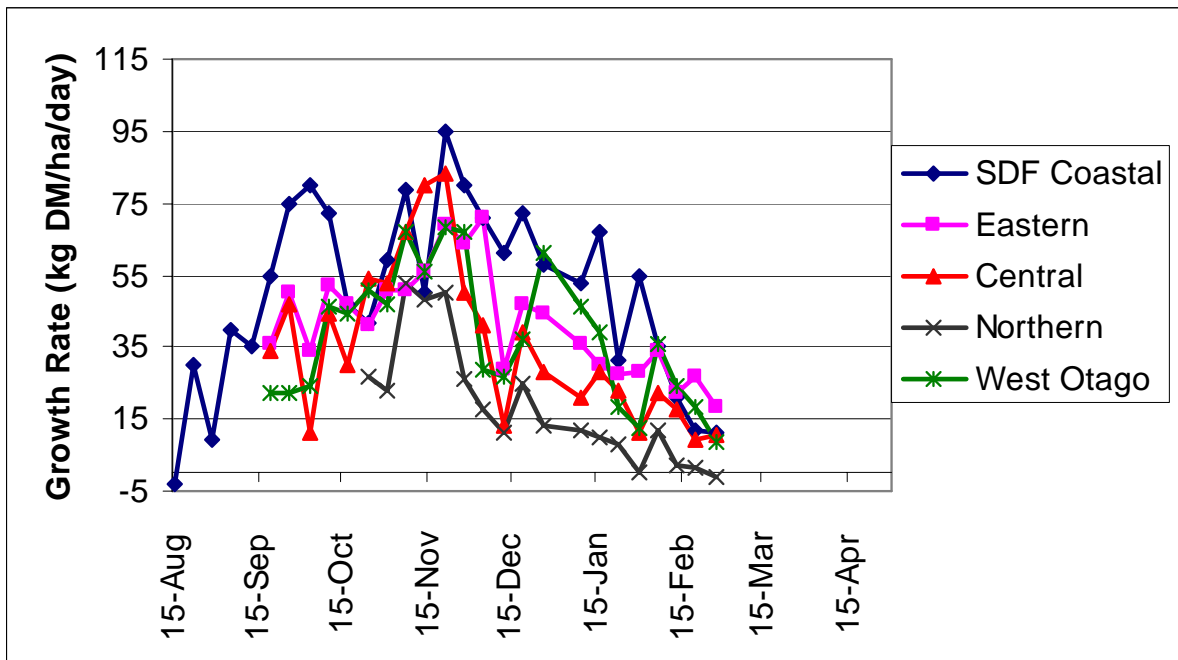


Figure 1: Woodlands pasture growth rates

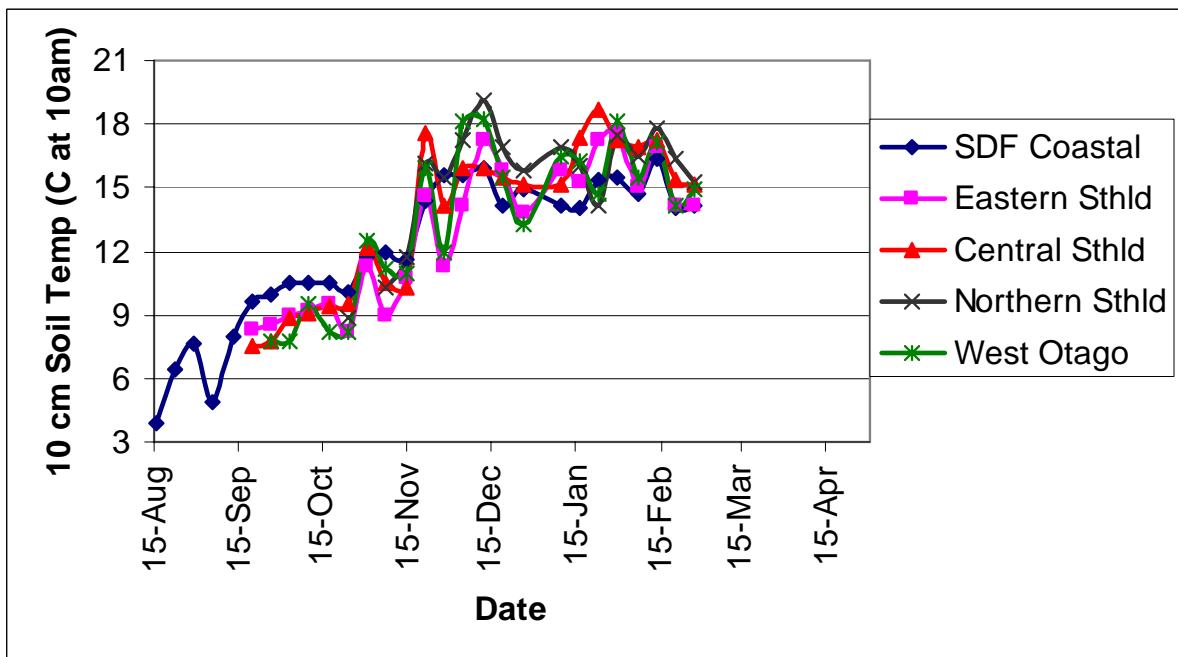
Farm Summary

	Demo Farm	Eastern	Central	Northern	West Otago
Average cover (kg DM/ha)	1839	1818	1609	1311	1849
Rotation length (days)	28	28	20	35	25
Supplement (kg DM/cow)	5	4	4.5	11	6
Production (kg MS/cow)	1.42	1.55	1.43		1.60
Production (kg MS/ha)	3.9	4.94	4.20		4.38
Stocking rate (cows/ha)	2.81	3.19	2.90	2.11	2.74
N (kg/ha)	123	75	94	0	103
Soil temperature (°C)	14.2	14.2	15.2	15.3	14.9
Growth Rate (kg DM/day)	11.0	19	10	-1	8.5
Comments	Feeding grass silage	Feeding PKE & silage	Feeding cereal silage & meal	Feeding silage, PKE & molasses	Feeding turnips & silage

Pasture Growth Rates



Soil Temperature



Pasture Quality

NOTE: We sample the paddocks immediately in front of the milkers, to height of 3.5cm (7 clicks on the rising plate meter). The RPM data in the table is the pre-grazing clicks recorded on the day of sampling.

Eastern Southland

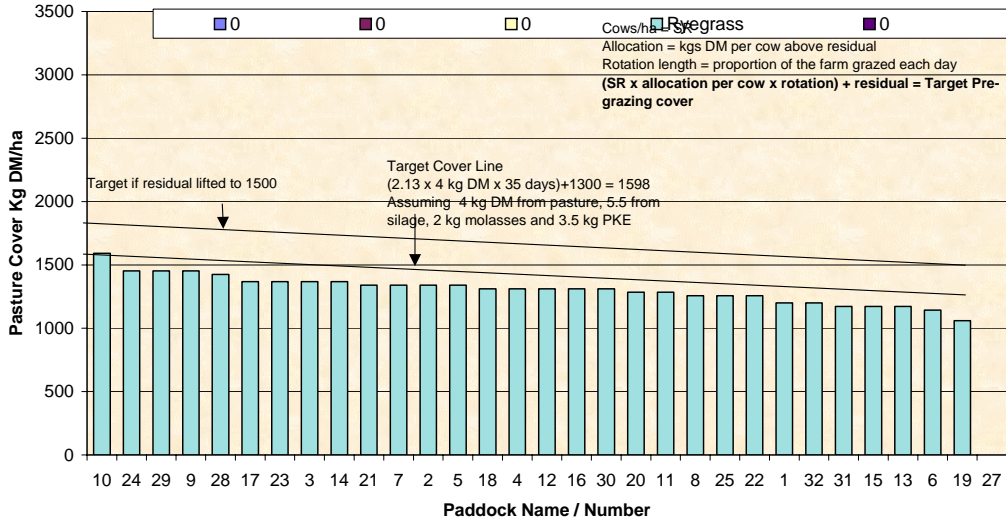
Description	Date	RPM	% prot	% Lipid	% SSS	% NDF	% ADF	OMD	MJME/kg DM	%DM
Pdk 33	2 Oct	18.2	27.6	5.6	12.8	40.8	23.4	82.9	12.1	15.7
Pdk 34	16Oct	16.8	22.4	4.4	16.9	41.3	25.0	81.6	11.8	18.0
Pdk 55	16Oct	12.8	26.5	4.5	11.7	46.2	26.2	81.1	11.6	15.4
Pdk 25	30 Oct	14.6	26.0	4.1	15.0	43.2	24.0	>85	12.7	19.5
Pdk 29	30 Oct	11.6	23.3	4.3	16.4	40.4	22.2	>85	12.5	17.3
Pdk 33	13Nov	12.8	28.5	4.4	16.4	42.6	22.9	>85	12.6	16.7
Pdk 69	13Nov	14.6	23.6	3.7	15.1	45.2	24.7	82.5	12.2	17.1
Pdk 47	27Nov	16.2	22.6	3.8	15.8	47.1	25.3	84.7	12.4	14.1
Pdk 26	27Nov	18.0	20.1	3.4	14.3	50.6	26.5	80.2	11.8	15.7
Pdk 33	11Dec	17.6	24.9	4.4	14.4	45.8	24.6	80.7	11.8	13.2
Pdk 12	11Dec	13.6	23.9	4.3	14.8	44.3	26.2	78.3	11.4	14.6
Pdk 46	8 Jan	13.0	33.6	5.7	7.1	34.5	25.0	79.7	10.7	14.0
Pdk 53	8 Jan	16.6	24.3	3.9	9.4	51.4	27.2	77.7	11.0	16.6
Pdk 64	22 Jan	15.8	29.5	4.6	8.9	45.7	25.7	79.3	10.9	12.8
Pdk 34	22 Jan	12.6	29.5	5.5	8.1	45.6	27.4	76.4	10.5	13.5
Pdk 60	6 Feb	13.2	23.7	4.1	10.3	52.6	24.9	75.6	11.4	22.3
Pdk 44	6 Feb	13.4	26.7	5.1	14.8	43.9	23.1	81.1	11.9	20.6
Pdk 47	20 Feb	11.0	28.6	5.1	12.1	44.8	24.4	79.4	11.4	19.8
Pdk 30	20Feb	12.2	28.1	4.6	10.4	49.9	26.3	75.5	10.8	22.3

Central Southland

Description	Date	RPM	% prot	% Lipid	% SSS	% NDF	% ADF	OMD	MJME/kg DM	%DM
Pdk 42	2 Oct	13.0	21.6	4.9	10.3	39.6	24.6	>85	12.3	12.5
Pdk 18	16Oct	11.1	26.3	5.1	13.9	40.7	23.3	82.5	12.0	15.5
Pdk 39	16Oct	14.4	28.2	5.4	11.6	40.4	24.3	84.0	11.8	13.5
Pdk 20	30Oct	16.4	21.5	4.0	17.5	42.8	22.0	>85	>12.7	20.0
Pdk 4	30Oct	16.8	24.4	4.8	14.7	42.2	22.9	81.6	12.0	18.3
Pdk 12	13Nov	17.4	24.7	4.3	16.3	44.8	22.6	>85	>12.7	17.3
Pdk 6	13Nov	19.4	23.1	4.3	18.5	39.5	23.7	>85	12.5	18.9
Pdk 26	27Nov	15.8	17.8	2.9	16.2	49.6	29.8	75.4	11.2	18.3
Pdk 13	27Nov	16.4	23.1	3.8	16.9	43.8	25.4	81.5	11.9	19.6
Pdk 40	11Dec	14.2	17.8	3.3	16.6	53.3	31.5	70.3	10.6	21.1
Pdk 15	11Dec	15.3	24.4	4.7	13.5	50.6	25.3	79	11.8	17.1
Pdk 12	8 Jan	12.2	34.8	6.2	6.1	39.0	23.9	82.1	11.1	17.3
Pdk 16	8 Jan	9.1	32.7	5.8	9.7	37.0	23.3	83.7	11.5	16.6
Pdk 5	22Jan	11.8	29.9	5.3	9.0	46.5	25.8	77.1	10.9	17.8
Pdk 42	22Jan	10.8	32.5	4.7	14.4	43.0	23.4	>85	12.2	17.3
Pdk 15	6 Feb	10.8	33.4	5.9	13.8	36.9	21.2	>85	>12.7	19.7
Pdk 33	6 Feb	10.6	27.9	5.2	14.7	39.8	22.2	82.1	12.0	21.3
Pdk 9	20Feb	9.4	27.0	4.8	12.0	47.0	24.1	80.3	11.7	20.7
Pdk 21	20Feb	9.0	34.0	5.7	11.8	37.9	24.2	81.7	11.6	22.2

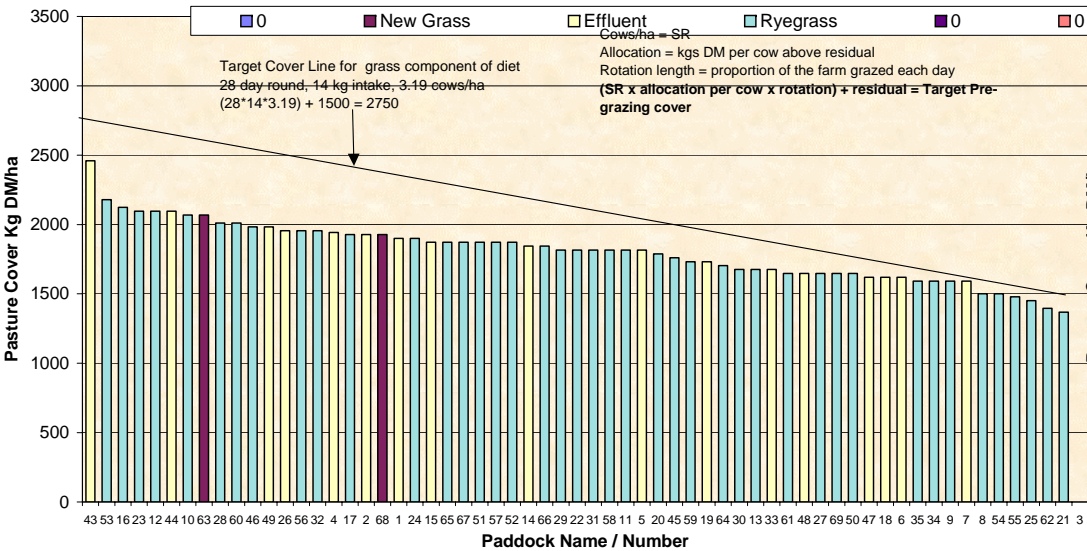
Farm Name: Frei Dairy, Soil Temp: 15.3, 27/02/2008, Wedge Date: 1311, Average Farm Cover: -1.1, Current Growth Rate

Feed Wedge for Farm Block - Milking



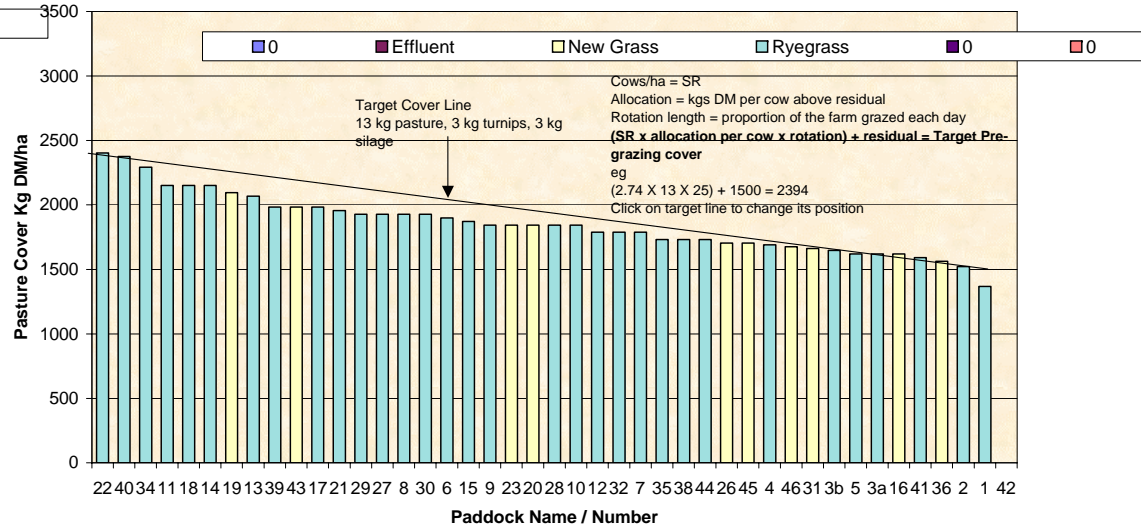
Farm Name: Kevin & Debbie Hall, Soil Temp: 14.2, 26/02/2008, Wedge Date: 1818, Average Farm Cover: 18.5, Current Growth Rate

Feed Wedge for Farm Block - Milking



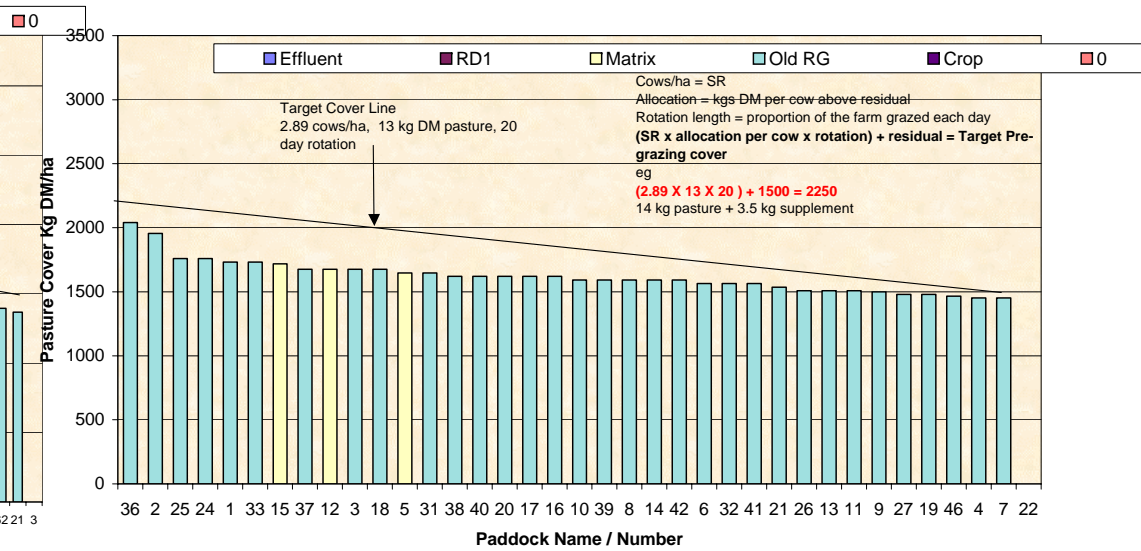
Farm Name: Dave & Mel Goble, Soil Temp: 14.9, 27/02/2008, Wedge Date: 1849, Average Farm Cover: 8.4, Current Growth Rate

Feed Wedge for Farm Block - Milking



Farm Name: George & Jose van der Poel, Soil Temp: 15.2, 26/02/2008, Wedge Date: 1609, Average Farm Cover: 10.3, Current Growth Rate

Feed Wedge for Farm Block - Milking



Southland Monitor Farm Project

Weekly Update – 20 February 2008

General Comments

Soil temperatures decreased by 1-2 °C on the monitor farms this week. Growth has continued to decline on all but the Eastern farm that increased slightly to 26 kg DM/ha/day. This week is the first week that growth on the demonstration farm has fallen below 20 kg DM/ha/day. The demonstration farm is now feeding supplement (pasture silage) to hold the round and prevent average pasture cover declining further.

The demonstration farm has 3 contingency options if conditions remain dry:

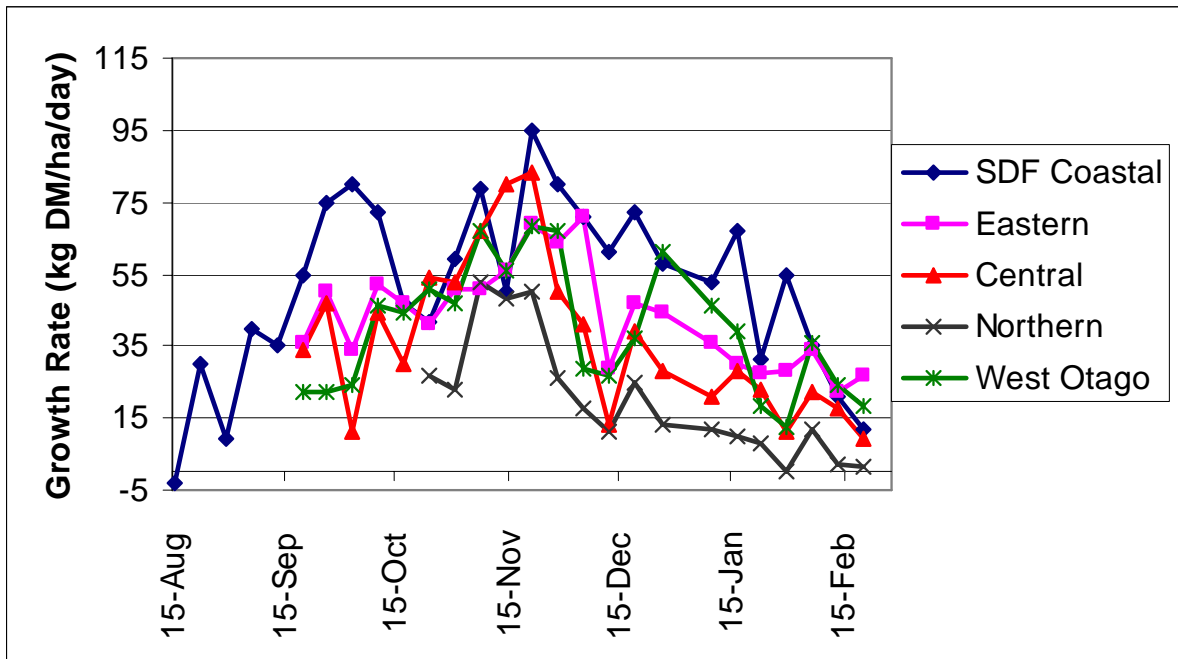
1. reduce demand by getting rid of definite culls, which are not suitable to sell as budget cows. Options of cows to be dried off – poor producers, lame cows, early-calving and thin 2 year olds.
2. increase feed by feeding silage
3. reduce allocation and change milking frequency to 16 hour milking or once-a-day milking. While this is the least desirable option at this stage if conditions remain dry it may be the best medium term option for the farm.

The culls from the Central farm went at the end of the week. The most rain (12 mm) was recorded on the northern farm however this has done nothing to alleviate the dry conditions. Per cow production has held again. The West Otago farm is still on 16 hour milkings and has approximately 20 days worth of turnips remaining.

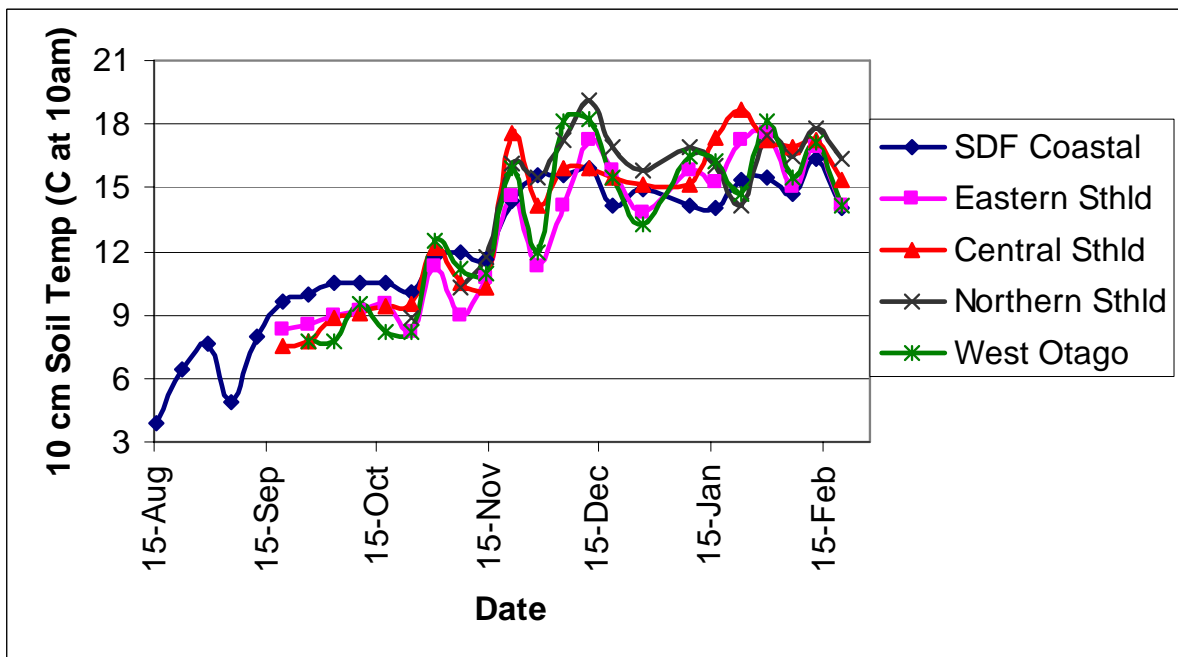
Farm Summary

	Demo Farm	Eastern	Central	Northern	West Otago
Average cover (kg DM/ha)	1926	1872	1632	1371	1958
Rotation length (days)	23	28	21	39	25
Supplement (kg DM/cow)	1.5	3	3.5	10	6
Production (kg MS/cow)	1.57	1.58	1.52	1.35	1.62
Production (kg MS/ha)	4.2	5.04	4.41	2.88	4.44
Stocking rate (cows/ha)	2.81	3.19	2.9	2.13	2.74
N (kg/ha)	123	75	94	0	-
Soil temperature (°C)	14.0	14.2	15.4	16.4	14.2
Growth Rate (kg DM/day)	12	26.5	9	1.5	18
Comments	Feeding grass silage	Feeding PKE & silage	Feeding cereal silage & meal	Feeding silage, PKE & molasses	Feeding turnips & silage

Pasture Growth Rates



Soil Temperature



Pasture Quality

NOTE: We sample the paddocks immediately in front of the milkers, to height of 3.5cm (7 clicks on the rising plate meter). The RPM data in the table is the pre-grazing clicks recorded on the day of sampling.

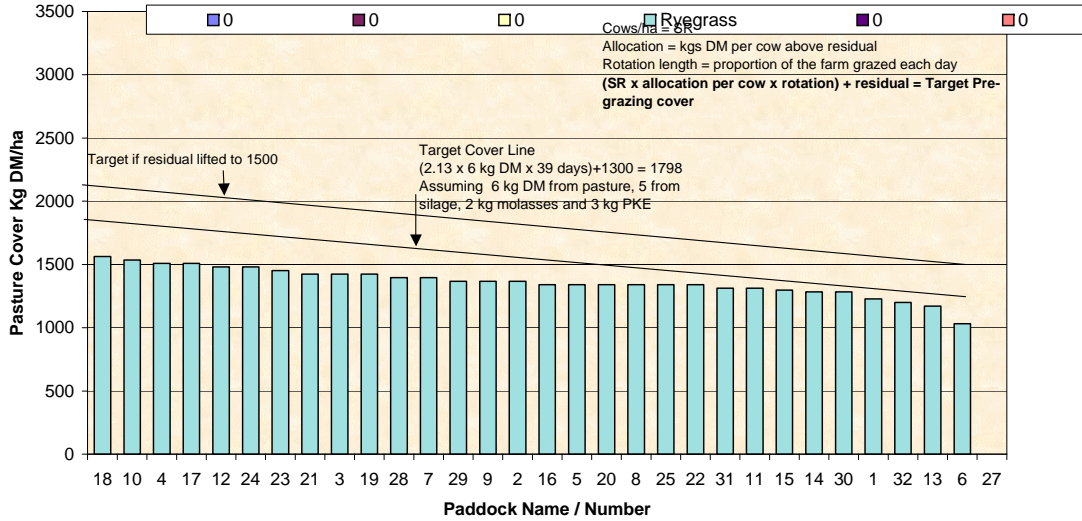
Eastern Southland

Description	Date	RPM	% prot	% Lipid	% SSS	% NDF	% ADF	OMD	MJME/kg DM	%DM
Pdk 33	2 Oct	18.2	27.6	5.6	12.8	40.8	23.4	82.9	12.1	15.7
Pdk 34	16Oct	16.8	22.4	4.4	16.9	41.3	25.0	81.6	11.8	18.0
Pdk 55	16Oct	12.8	26.5	4.5	11.7	46.2	26.2	81.1	11.6	15.4
Pdk 25	30 Oct	14.6	26.0	4.1	15.0	43.2	24.0	>85	12.7	19.5
Pdk 29	30 Oct	11.6	23.3	4.3	16.4	40.4	22.2	>85	12.5	17.3
Pdk 33	13Nov	12.8	28.5	4.4	16.4	42.6	22.9	>85	12.6	16.7
Pdk 69	13Nov	14.6	23.6	3.7	15.1	45.2	24.7	82.5	12.2	17.1
Pdk 47	27Nov	16.2	22.6	3.8	15.8	47.1	25.3	84.7	12.4	14.1
Pdk 26	27Nov	18.0	20.1	3.4	14.3	50.6	26.5	80.2	11.8	15.7
Pdk 33	11Dec	17.6	24.9	4.4	14.4	45.8	24.6	80.7	11.8	13.2
Pdk 12	11Dec	13.6	23.9	4.3	14.8	44.3	26.2	78.3	11.4	14.6
Pdk 46	8 Jan	13.0	33.6	5.7	7.1	34.5	25.0	79.7	10.7	14.0
Pdk 53	8 Jan	16.6	24.3	3.9	9.4	51.4	27.2	77.7	11.0	16.6
Pdk 64	22 Jan	15.8	29.5	4.6	8.9	45.7	25.7	79.3	10.9	12.8
Pdk 34	22 Jan	12.6	29.5	5.5	8.1	45.6	27.4	76.4	10.5	13.5
Pdk 60	6 Feb	13.2	23.7	4.1	10.3	52.6	24.9	75.6	11.4	22.3
Pdk 44	6 Feb	13.4	26.7	5.1	14.8	43.9	23.1	81.1	11.9	20.6

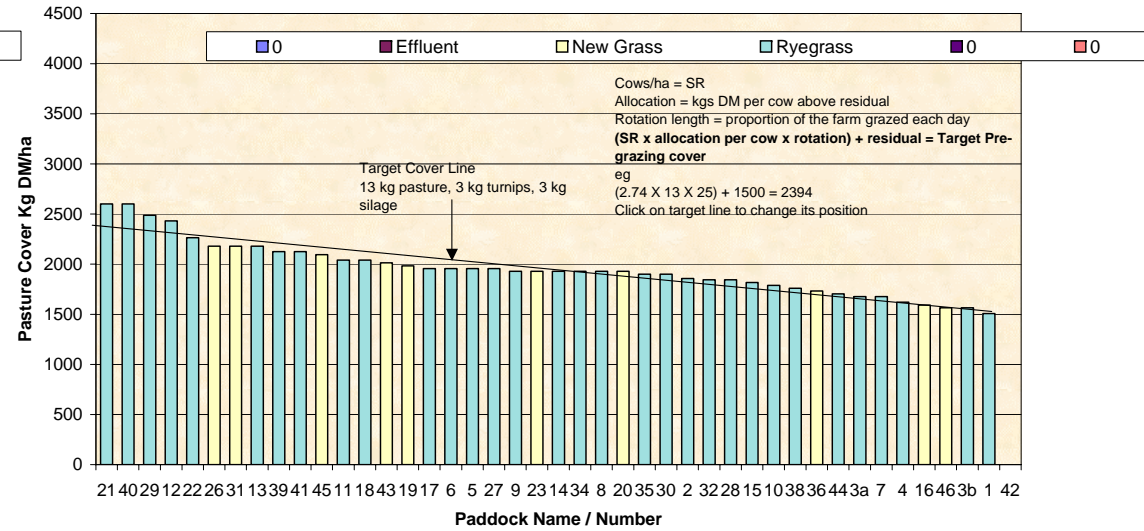
Central Southland

Description	Date	RPM	% prot	% Lipid	% SSS	% NDF	% ADF	OMD	MJME/kg DM	%DM
Pdk 42	2 Oct	13.0	21.6	4.9	10.3	39.6	24.6	>85	12.3	12.5
Pdk 18	16Oct	11.1	26.3	5.1	13.9	40.7	23.3	82.5	12.0	15.5
Pdk 39	16Oct	14.4	28.2	5.4	11.6	40.4	24.3	84.0	11.8	13.5
Pdk 20	30Oct	16.4	21.5	4.0	17.5	42.8	22.0	>85	>12.7	20.0
Pdk 4	30Oct	16.8	24.4	4.8	14.7	42.2	22.9	81.6	12.0	18.3
Pdk 12	13Nov	17.4	24.7	4.3	16.3	44.8	22.6	>85	>12.7	17.3
Pdk 6	13Nov	19.4	23.1	4.3	18.5	39.5	23.7	>85	12.5	18.9
Pdk 26	27Nov	15.8	17.8	2.9	16.2	49.6	29.8	75.4	11.2	18.3
Pdk 13	27Nov	16.4	23.1	3.8	16.9	43.8	25.4	81.5	11.9	19.6
Pdk 40	11Dec	14.2	17.8	3.3	16.6	53.3	31.5	70.3	10.6	21.1
Pdk 15	11Dec	15.3	24.4	4.7	13.5	50.6	25.3	79	11.8	17.1
Pdk 12	8 Jan	12.2	34.8	6.2	6.1	39.0	23.9	82.1	11.1	17.3
Pdk 16	8 Jan	9.1	32.7	5.8	9.7	37.0	23.3	83.7	11.5	16.6
Pdk 5	22Jan	11.8	29.9	5.3	9.0	46.5	25.8	77.1	10.9	17.8
Pdk 42	22Jan	10.8	32.5	4.7	14.4	43.0	23.4	>85	12.2	17.3
Pdk 15	6 Feb	10.8	33.4	5.9	13.8	36.9	21.2	>85	>12.7	19.7
Pdk 33	6 Feb	10.6	27.9	5.2	14.7	39.8	22.2	82.1	12.0	21.3

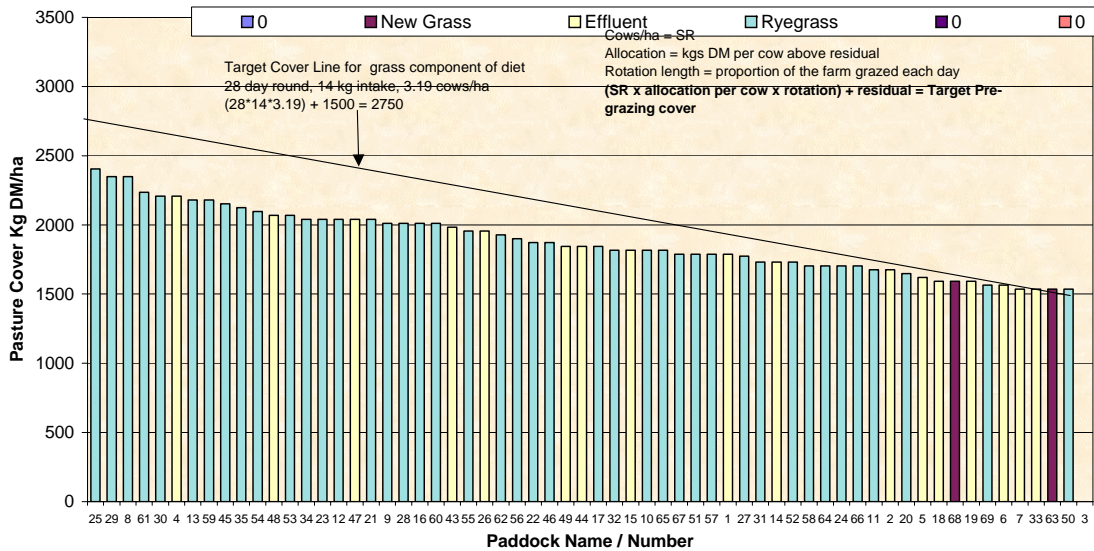
Farm Name Freil Dairy **Soil Temp:** 16.4 **20/02/2008** **Wedge Date**
 1371 **Average Farm Cover**
Feed Wedge for Farm Block - Milking 1.5 **Current Growth Rate**



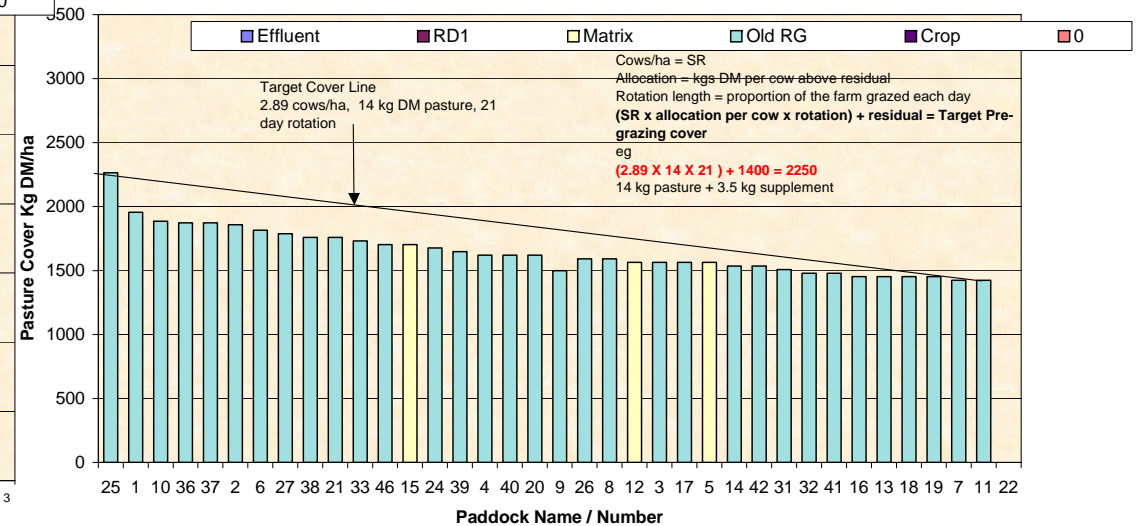
Farm Name Dave & Mel Goble **Soil Temp:** 14.2 **20/02/2008** **Wedge Date**
 1958 **Average Farm Cover**
Feed Wedge for Farm Block - Milking 18.5 **Current Growth Rate**



Farm Name Kevin & Debbie Hall **Soil Temp:** 14.2 **19/02/2008** **Wedge Date**
 1872 **Average Farm Cover**
Feed Wedge for Farm Block - Milking 26.5 **Current Growth Rate**



Farm Name George & Jose van der Poel **Soil Temp:** 15.4 **19/02/2008** **Wedge Date**
 1632 **Average Farm Cover**
Feed Wedge for Farm Block - Milking 9.0 **Current Growth Rate**



Southland Monitor Farm Project

Weekly Update – 13 February 2008

General Comments

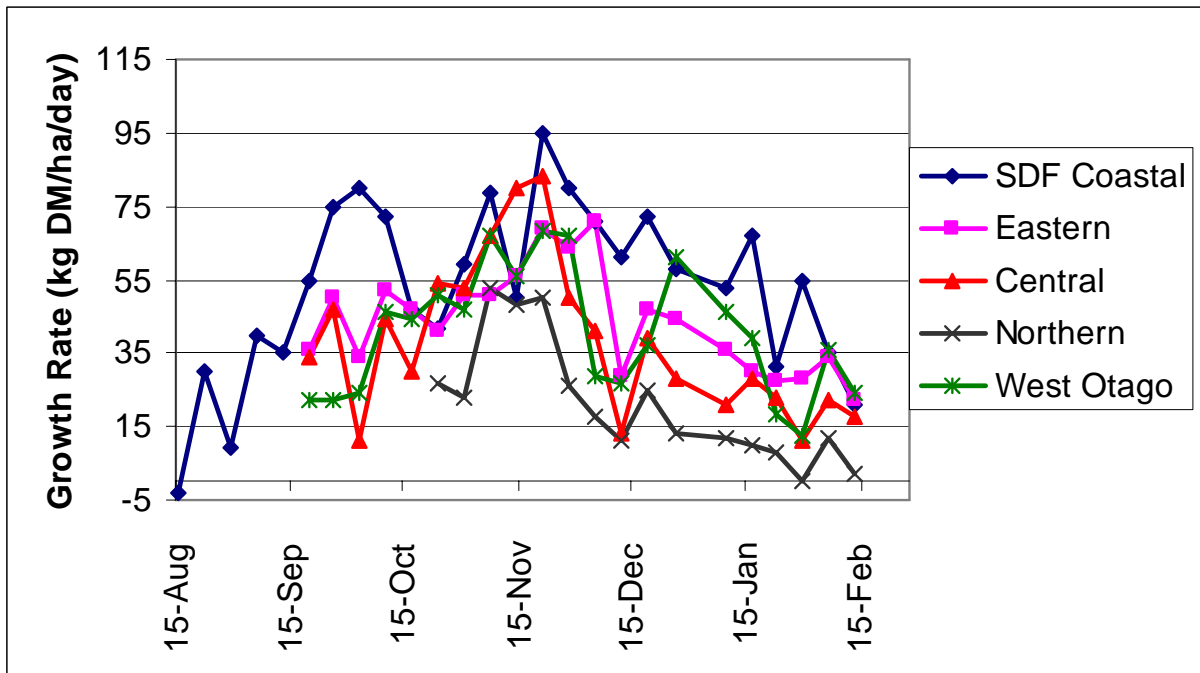
Soil temperatures increased by 1-2 °C on the monitor farms this week. After a positive movement in growth rates last week, growth has again fallen on all the monitor farms and the demonstration farm this week. Northern Southland was close to zero growth again this week with the other farms all below 25 kg DM/day. By comparison the growth rate reported from Woodlands on 8 Feb 08 was 21 kg DM/ha/day, significantly less than the long-term average for this period of 60 kg DM/ha/day. Culls have been identified from the Central Southland farm and have gone from the Northern farm. The Northern farm is now feeding 10.5 kg supplement with the introduction of PKE this week. Per cow production is holding on all farms. Negligible rainfall has fallen on the monitor farms during the last 7 days.

The pasture quality results from the 6 February have been added to the tables below. Quality has improved on all the farms except Northern Southland where the continued dry conditions have resulted in very little green pasture available for sampling. Turnip samples sampled from West Otago came back at 8.6% DM in the bulbs and 8.4% DM in the leaf. We are still awaiting quality analysis. Cereal silage from Central Southland tested at 9.6 ME which is at the lower end of the range for cereal silage while pasture baleage from West Otago tested at 11.0 ME which is above average

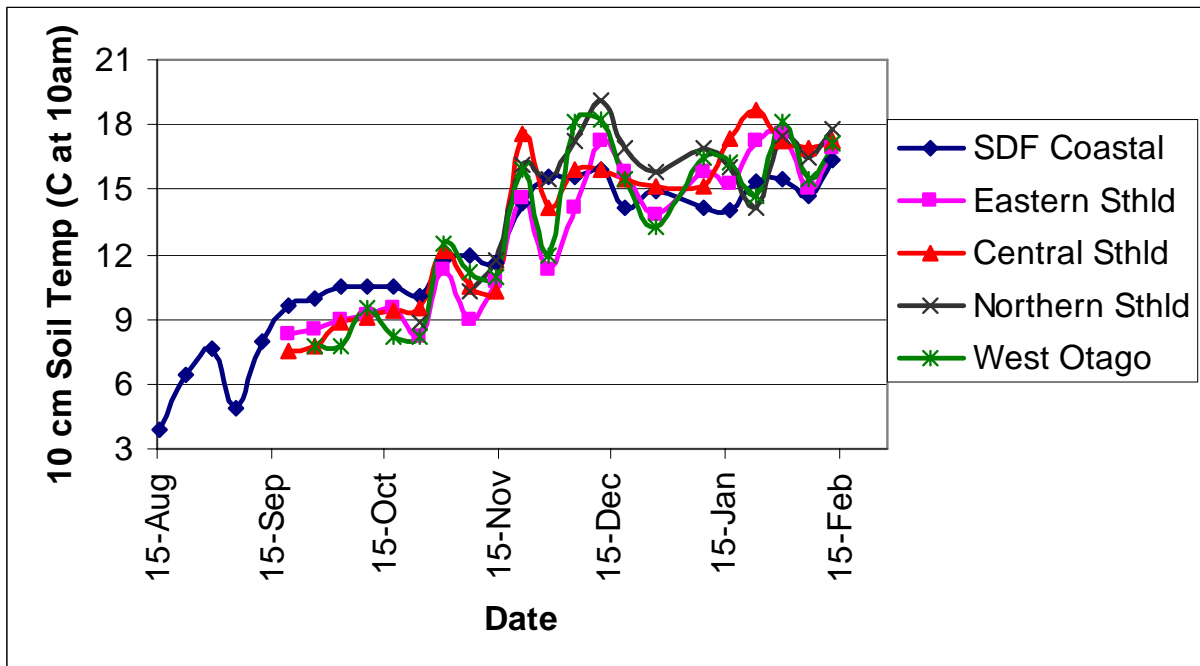
Farm Summary

	Demo Farm	Eastern	Central	Northern	West Otago
Average cover (kg DM/ha)	2086	1862	1722	1408	2000
Rotation length (days)	25	28	22	35	25
Supplement (kg DM/cow)	0	1	3	10.5	6
Production (kg MS/cow)	1.51	1.60	1.58	1.35	1.68
Production (kg MS/ha)	4.2	5.08	4.73	2.87	4.48
Stocking rate (cows/ha)	2.81	3.19	3.01	2.13	2.75
N (kg/ha)	123	75	94	0	-
Soil temperature (°C)	16.4	16.9	17.3	17.8	17.1
Growth Rate (kg DM/day)	21	22	18	2	24
Comments		Feeding PKE	Feeding cereal silage	Feeding silage, PKE & molasses	Feeding turnips & silage

Pasture Growth Rates



Soil Temperature



Pasture Quality

NOTE: We sample the paddocks immediately in front of the milkers, to height of 3.5cm (7 clicks on the rising plate meter). The RPM data in the table is the pre-grazing clicks recorded on the day of sampling.

Eastern Southland

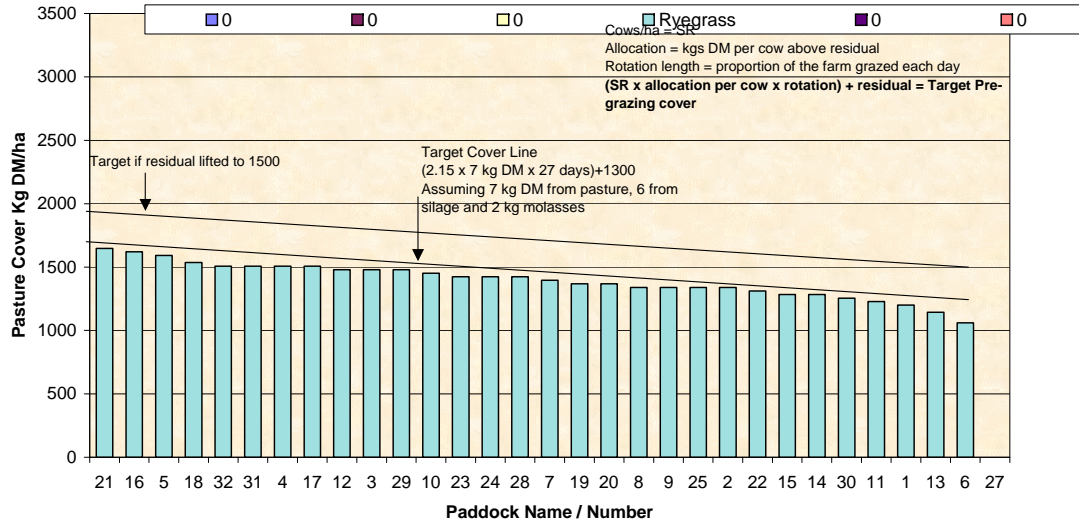
Description	Date	RPM	% prot	% Lipid	% SSS	% NDF	% ADF	OMD	MJME/kg DM	%DM
Pdk 33	2 Oct	18.2	27.6	5.6	12.8	40.8	23.4	82.9	12.1	15.7
Pdk 34	16Oct	16.8	22.4	4.4	16.9	41.3	25.0	81.6	11.8	18.0
Pdk 55	16Oct	12.8	26.5	4.5	11.7	46.2	26.2	81.1	11.6	15.4
Pdk 25	30 Oct	14.6	26.0	4.1	15.0	43.2	24.0	>85	12.7	19.5
Pdk 29	30 Oct	11.6	23.3	4.3	16.4	40.4	22.2	>85	12.5	17.3
Pdk 33	13Nov	12.8	28.5	4.4	16.4	42.6	22.9	>85	12.6	16.7
Pdk 69	13Nov	14.6	23.6	3.7	15.1	45.2	24.7	82.5	12.2	17.1
Pdk 47	27Nov	16.2	22.6	3.8	15.8	47.1	25.3	84.7	12.4	14.1
Pdk 26	27Nov	18.0	20.1	3.4	14.3	50.6	26.5	80.2	11.8	15.7
Pdk 33	11Dec	17.6	24.9	4.4	14.4	45.8	24.6	80.7	11.8	13.2
Pdk 12	11Dec	13.6	23.9	4.3	14.8	44.3	26.2	78.3	11.4	14.6
Pdk 46	8 Jan	13.0	33.6	5.7	7.1	34.5	25.0	79.7	10.7	14.0
Pdk 53	8 Jan	16.6	24.3	3.9	9.4	51.4	27.2	77.7	11.0	16.6
Pdk 64	22 Jan	15.8	29.5	4.6	8.9	45.7	25.7	79.3	10.9	12.8
Pdk 34	22 Jan	12.6	29.5	5.5	8.1	45.6	27.4	76.4	10.5	13.5
Pdk 60	6 Feb	13.2	23.7	4.1	10.3	52.6	24.9	75.6	11.4	22.3
Pdk 44	6 Feb	13.4	26.7	5.1	14.8	43.9	23.1	81.1	11.9	20.6

Central Southland

Description	Date	RPM	% prot	% Lipid	% SSS	% NDF	% ADF	OMD	MJME/kg DM	%DM
Pdk 42	2 Oct	13.0	21.6	4.9	10.3	39.6	24.6	>85	12.3	12.5
Pdk 18	16Oct	11.1	26.3	5.1	13.9	40.7	23.3	82.5	12.0	15.5
Pdk 39	16Oct	14.4	28.2	5.4	11.6	40.4	24.3	84.0	11.8	13.5
Pdk 20	30Oct	16.4	21.5	4.0	17.5	42.8	22.0	>85	>12.7	20.0
Pdk 4	30Oct	16.8	24.4	4.8	14.7	42.2	22.9	81.6	12.0	18.3
Pdk 12	13Nov	17.4	24.7	4.3	16.3	44.8	22.6	>85	>12.7	17.3
Pdk 6	13Nov	19.4	23.1	4.3	18.5	39.5	23.7	>85	12.5	18.9
Pdk 26	27Nov	15.8	17.8	2.9	16.2	49.6	29.8	75.4	11.2	18.3
Pdk 13	27Nov	16.4	23.1	3.8	16.9	43.8	25.4	81.5	11.9	19.6
Pdk 40	11Dec	14.2	17.8	3.3	16.6	53.3	31.5	70.3	10.6	21.1
Pdk 15	11Dec	15.3	24.4	4.7	13.5	50.6	25.3	79	11.8	17.1
Pdk 12	8 Jan	12.2	34.8	6.2	6.1	39.0	23.9	82.1	11.1	17.3
Pdk 16	8 Jan	9.1	32.7	5.8	9.7	37.0	23.3	83.7	11.5	16.6
Pdk 5	22Jan	11.8	29.9	5.3	9.0	46.5	25.8	77.1	10.9	17.8
Pdk 42	22Jan	10.8	32.5	4.7	14.4	43.0	23.4	>85	12.2	17.3
Pdk 15	6 Feb	10.8	33.4	5.9	13.8	36.9	21.2	>85	>12.7	19.7
Pdk 33	6 Feb	10.6	27.9	5.2	14.7	39.8	22.2	82.1	12.0	21.3

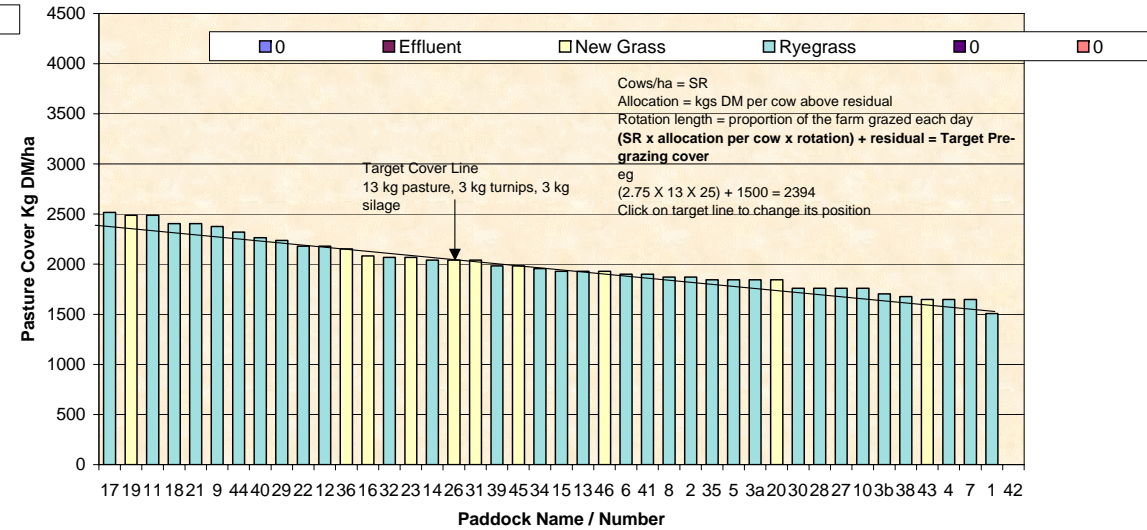
Farm Name Frel Dairy Soil Temp: 17.8 13/02/2008 Wedge Date
 1408 Average Farm Cover
 1.9 Current Growth Rate

Feed Wedge for Farm Block - Milking



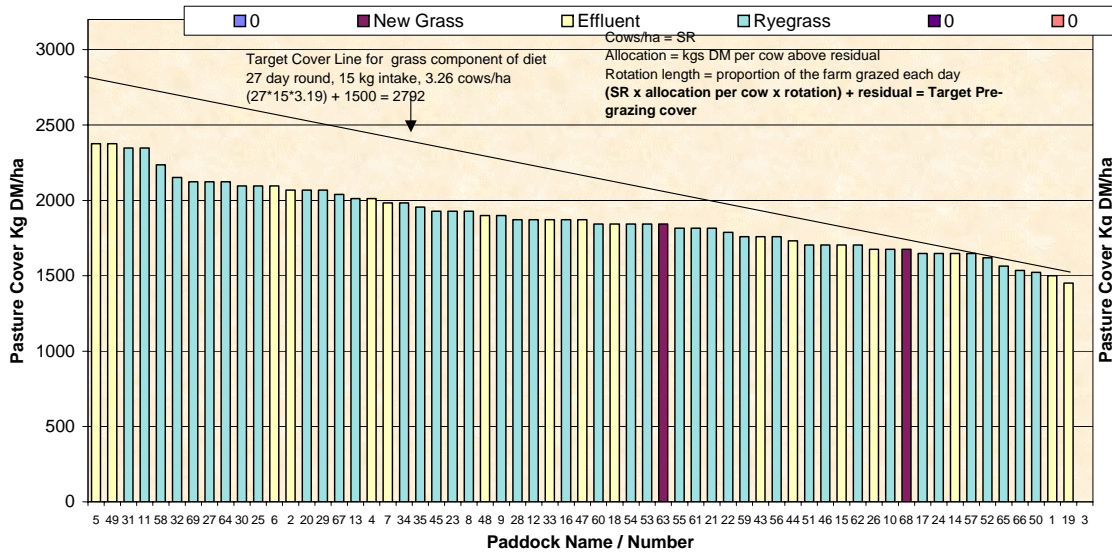
Farm Name Dave & Mel Goble Soil Temp: 17.1 13/02/2008 Wedge Date
 2000 Average Farm Cover
 24.1 Current Growth Rate

Feed Wedge for Farm Block - Milking



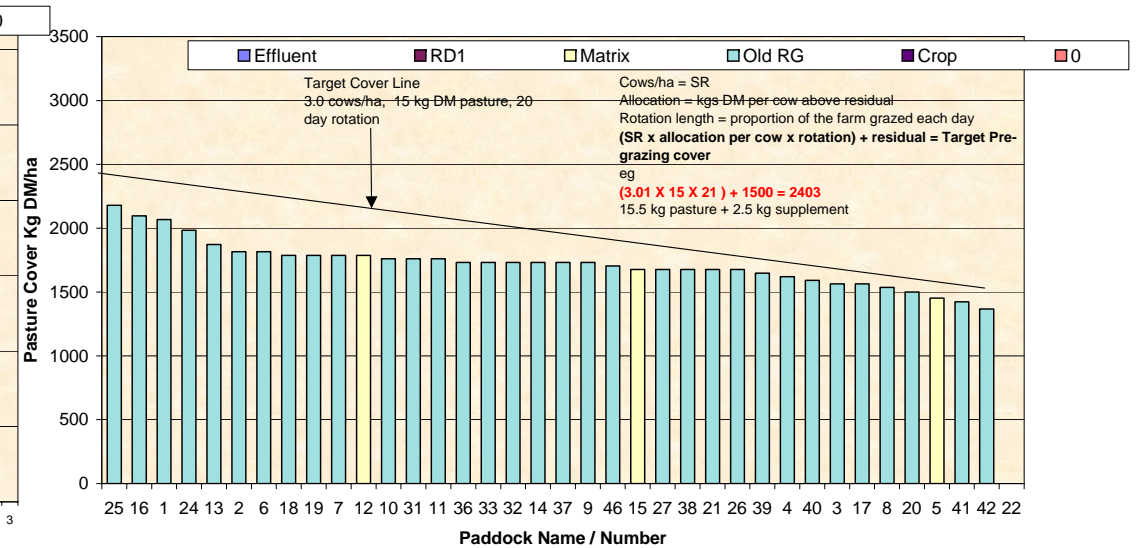
Farm Name Kevin & Debbie Hall Soil Temp: 16.9 12/02/2008 Wedge Date
 1862 Average Farm Cover
 21.6 Current Growth Rate

Feed Wedge for Farm Block - Milking



Farm Name George & Jose van der Poel Soil Temp: 17.3 12/02/2008 Wedge Date
 1722 Average Farm Cover
 18.0 Current Growth Rate

Feed Wedge for Farm Block - Milking



Southland Monitor Farm Project

Weekly Update – 6 February 2008

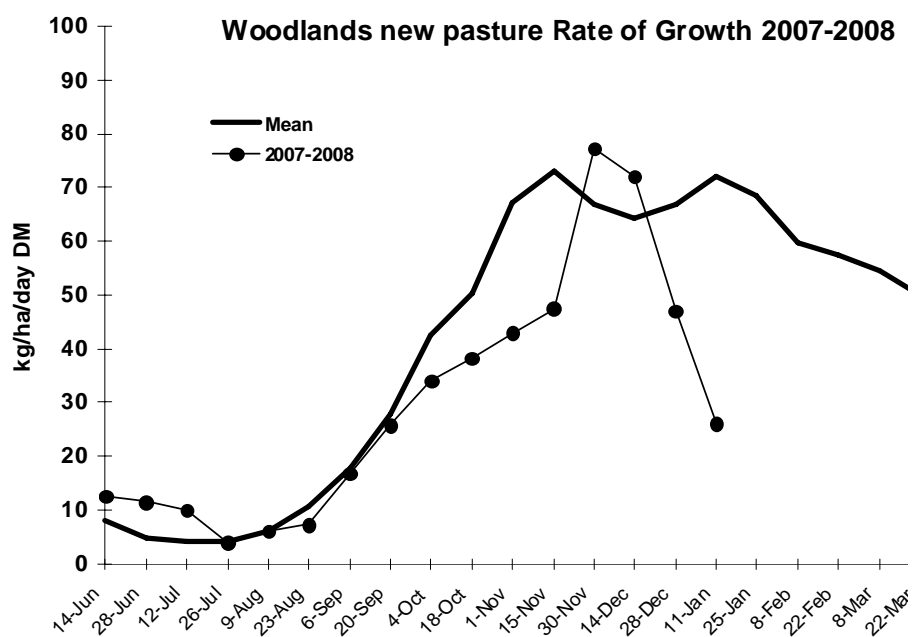
General Comments

Soil temperatures on all the monitor farms have dropped by 1-2 °C. Growth rates on all the monitor farms have increased this week, but growth fell on the demonstration farm. The range in growth rate was 12 to 36 kg DM/cow/day. The demonstration farm has the highest average pasture cover and is the only farm not feeding supplement. Supplement intake on the other farms ranges from 1 to 8 kg DM/cow/day. Per cow production has dropped slightly again this week. Rainfall across the region was variable this week. The demonstration farm received 15 ml while 30.5 ml was recorded at the central Southland farm.

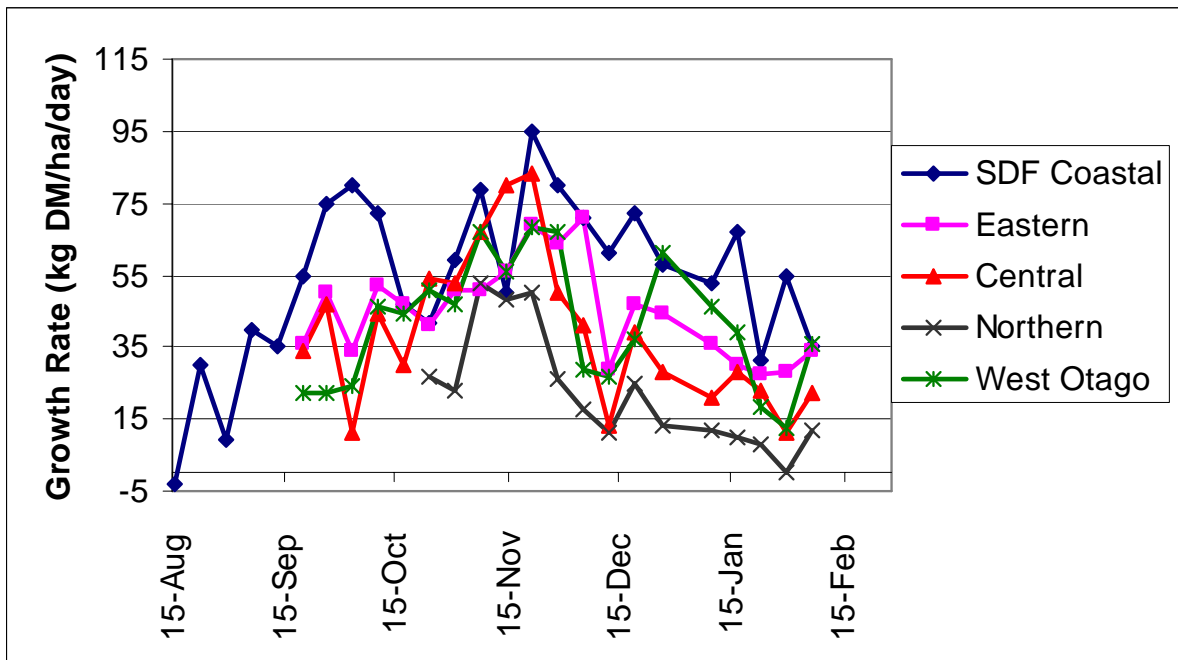
The pasture quality results from last week are presented in the tables below. Quality ranges from 8.3 to 12.2 ME. The majority of samples, including the Northern farm that has applied no artificial N, had crude protein concentrations above 25%.

Farm Summary

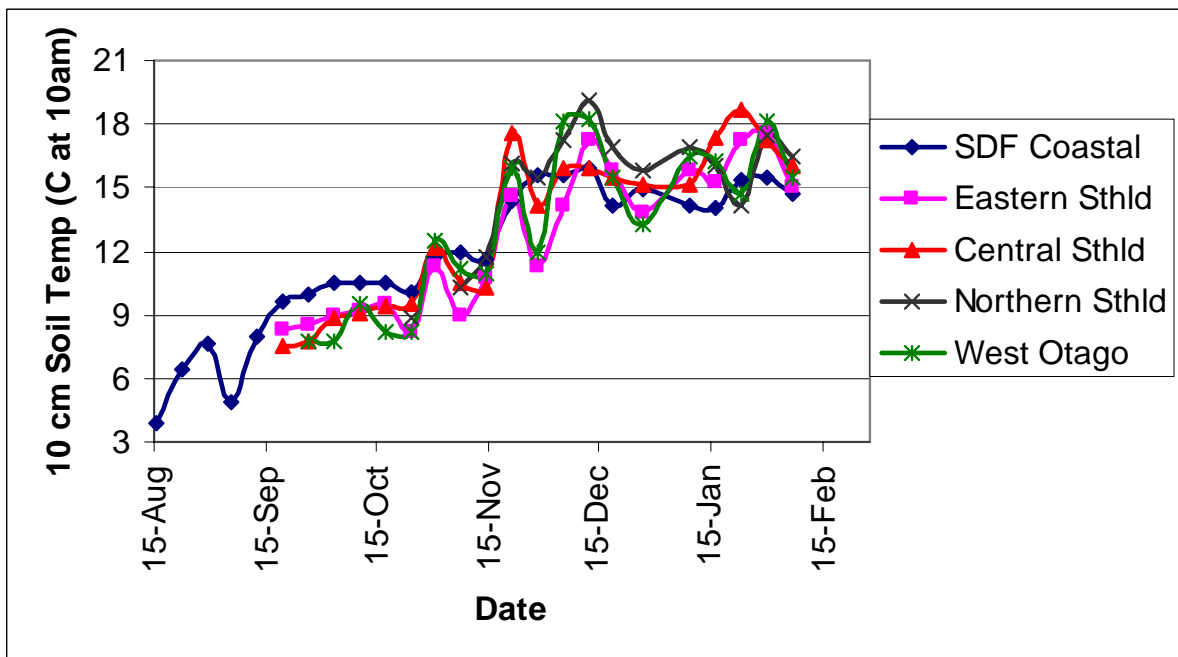
	Demo Farm	Eastern	Central	Northern	West Otago
Average cover (kg DM/ha)	2196	1925	1756	1455	2009
Rotation length (days)	29	27	20	30	25
Supplement (kg DM/cow)	0	1	2	8	6
Production (kg MS/cow)	1.53	1.61	1.57	1.36	1.68
Production (kg MS/ha)	4.30	5.11	4.69	2.92	4.48
Stocking rate (cows/ha)	2.81	3.19	3.01	2.15	2.75
N (kg/ha)	123	75	94	0	-
Soil temperature (°C)	14.7	15.0	-	16.5	15.5
Growth Rate (kg DM/day)	35	34	22	12	36
Comments		Feeding PKE	Feeding cereal silage	Feeding silage & molasses	Feeding turnips & silage



Pasture Growth Rates

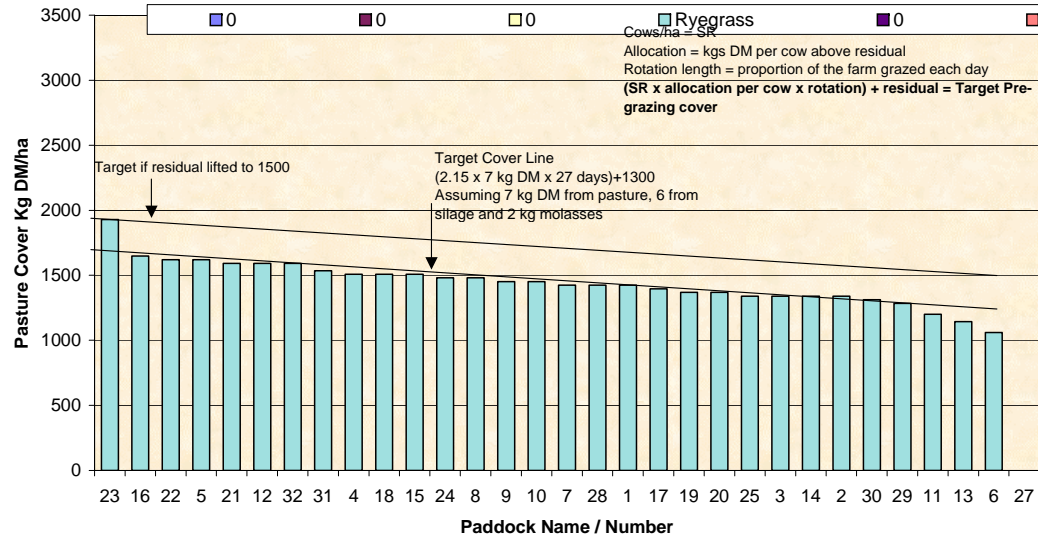


Soil Temperature



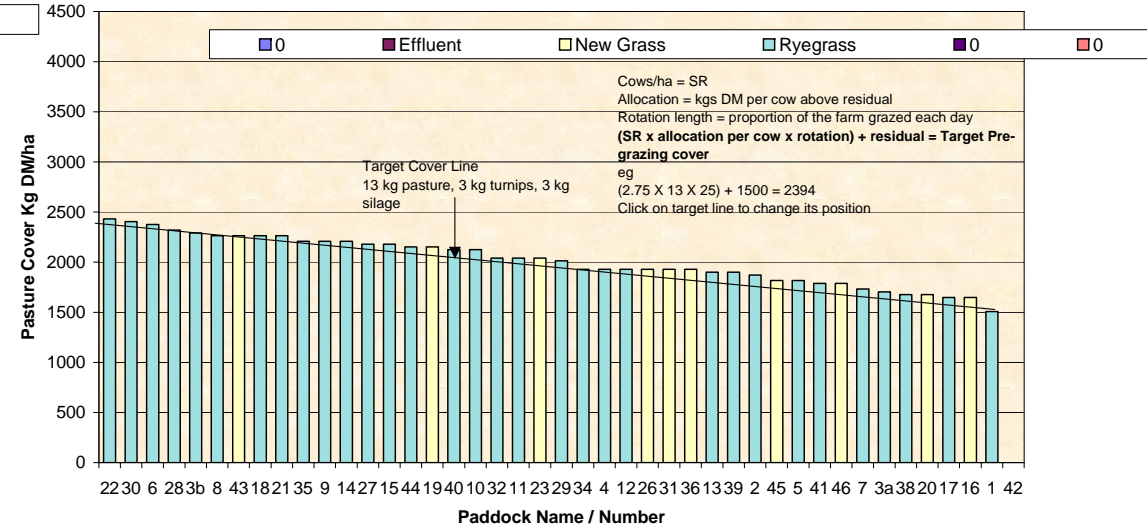
Farm Name: Frel Dairy
 Soil Temp: 16.5
 06/02/2008
 Wedge Date: 1455
 Average Farm Cover
 12.0
 Current Growth Rate

Feed Wedge for Farm Block - Milking



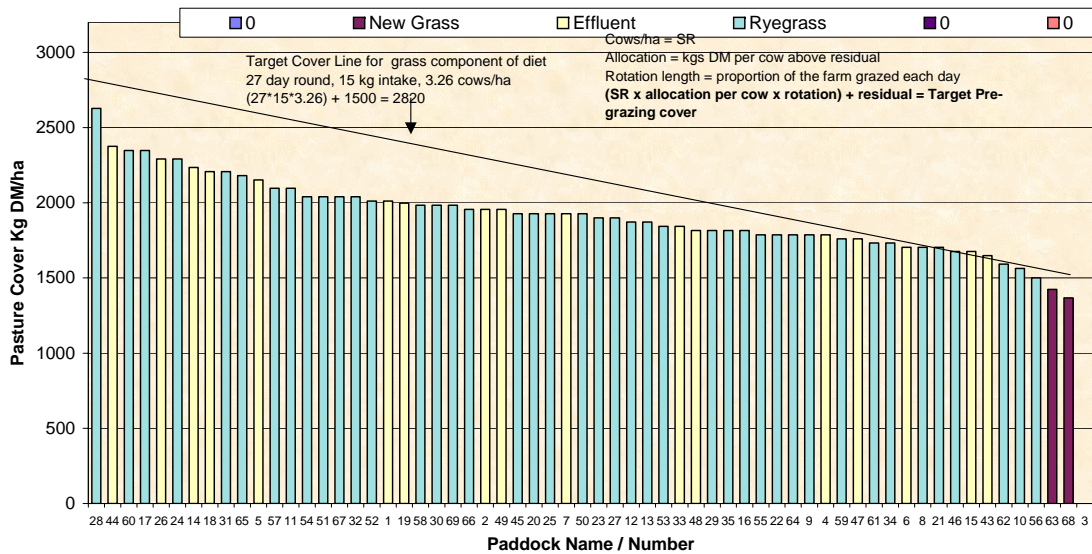
Farm Name: Dave & Mel Goble
 Soil Temp: 15.5
 06/02/2008
 Wedge Date: 2009
 Average Farm Cover
 36.1
 Current Growth Rate

Feed Wedge for Farm Block - Milking



Farm Name: Kevin & Debbie Hall
 Soil Temp: 15.0
 05/02/2008
 Wedge Date: 1925
 Average Farm Cover
 33.8
 Current Growth Rate

Feed Wedge for Farm Block - Milking



Farm Name: George & Jose van der Poel
 Soil Temp: not recorded
 05/02/2008
 Wedge Date: 1756
 Average Farm Cover
 21.7
 Current Growth Rate

Feed Wedge for Farm Block - Milking

