

Southland Monitor Farm Project

Weekly Update – 31 January 2008

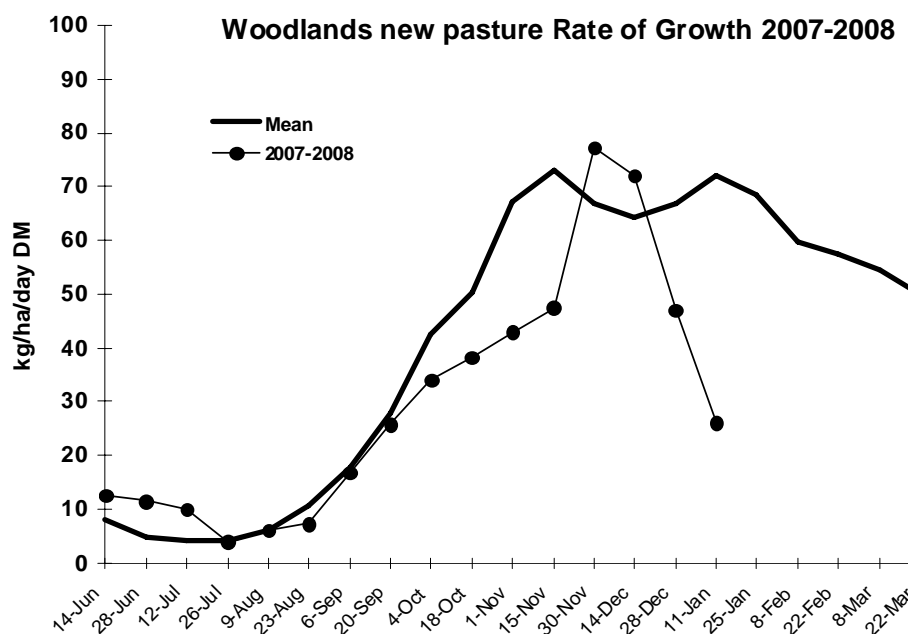
General Comments

Soil temperatures on all the monitor farms have risen this week and now range between 15.5 and 18.1 °C. The rain of 10 days ago has done little to improve growth rates with the Demonstration Farm the only farm where growth was higher than last week. In Northern Southland average growth was zero and 7 of the ungrazed paddocks reduced in cover. Central Southland has introduced 1.5 kg cereal silage and Eastern Southland have replaced the barley with PKE in the paddock. The West Otago farm commenced 16 hour milking on Monday 28 Jan and is grazing a turnip crop and feeding pasture silage. Eight culls have been removed from the Northern farm. For interest this week I have included the Woodlands average growth information. This clearly demonstrates that the growth rates currently being experienced in the region are well below average.

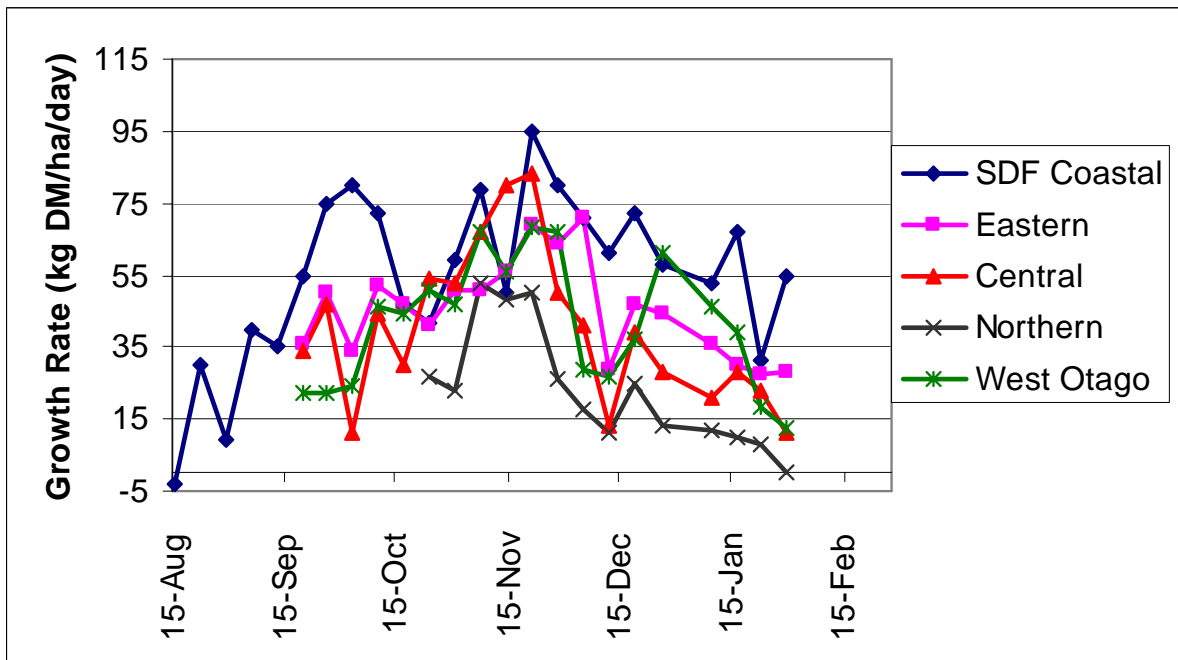
The pasture quality results from last week are presented in the tables below. Quality ranges from 8.3 to 12.2 ME. The majority of samples, including the Northern farm that has applied no artificial N, had crude protein concentrations above 25%.

Farm Summary

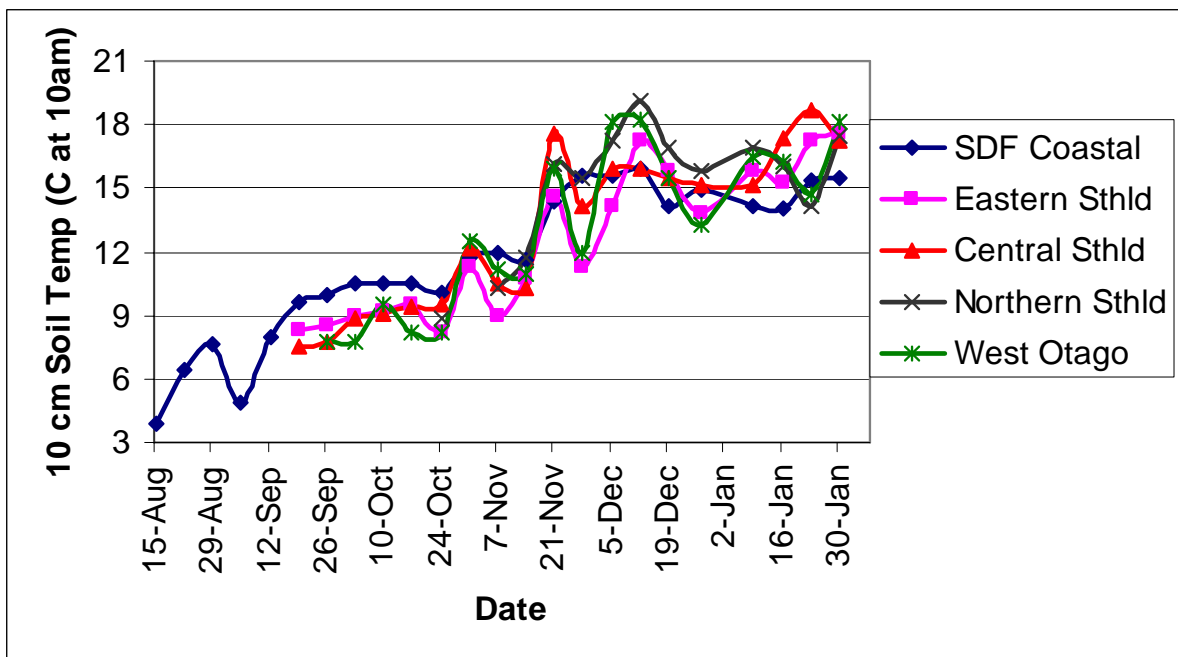
	Demo Farm	Eastern	Central	Northern	West Otago
Average cover (kg DM/ha)	2277	1945	1767	1433	1953
Rotation length (days)	28	27	21	27	25
Supplement (kg DM/cow)	0	1	1	8	5
Production (kg MS/cow)	1.60	1.65	1.68	1.40	1.73
Production (kg MS/ha)	4.45	5.15	5.06	3.01	4.76
Stocking rate (cows/ha)	2.81	3.12	3.01	2.15	2.75
N (kg/ha)	123	75	94	0	-
Soil temperature (°C)	15.5	17.6	17.2	17.5	18.1
Growth Rate (kg DM/day)	55	28	11.5	0	12.5
Comments		Feeding PKE	Feeding cereal silage	Feeding silage & molasses	Feeding turnips & silage



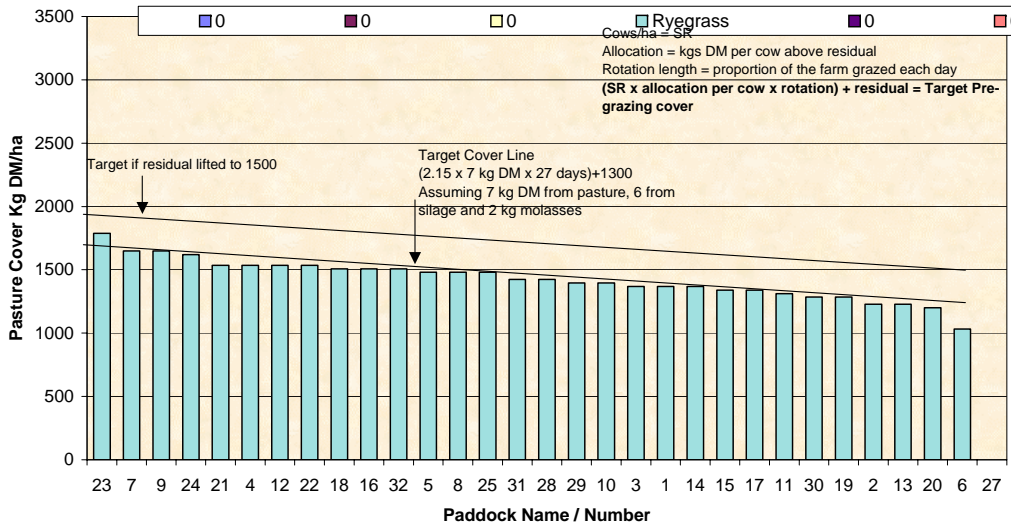
Pasture Growth Rates



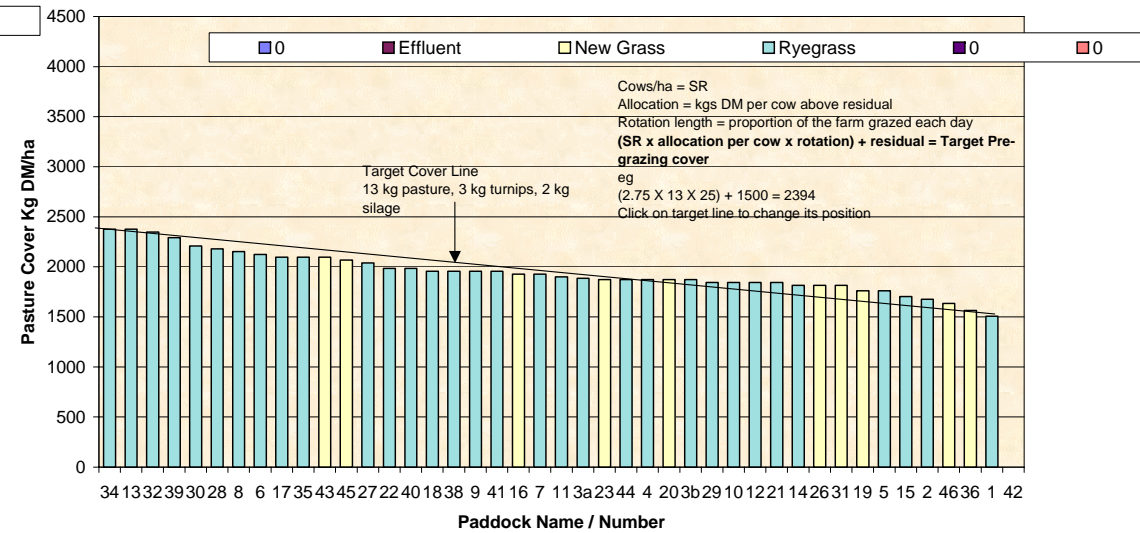
Soil Temperature



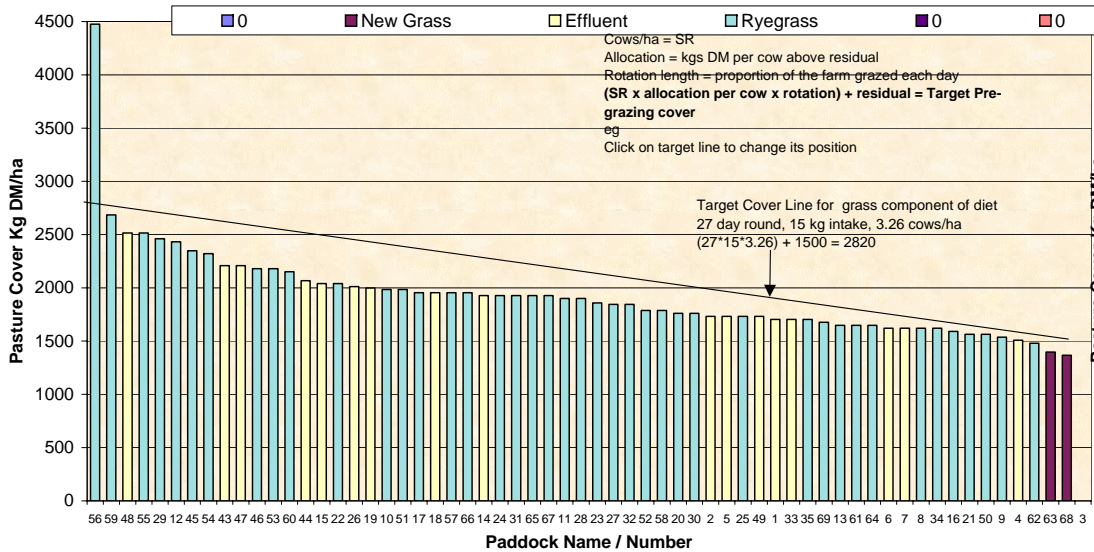
Farm Name: Frel Dairy, Soil Temp: 17.5, 31/01/2008, Wedge Date
 Feed Wedge for Farm Block - Milking, 1433 Average Farm Cover, -0.6 Current Growth Rate



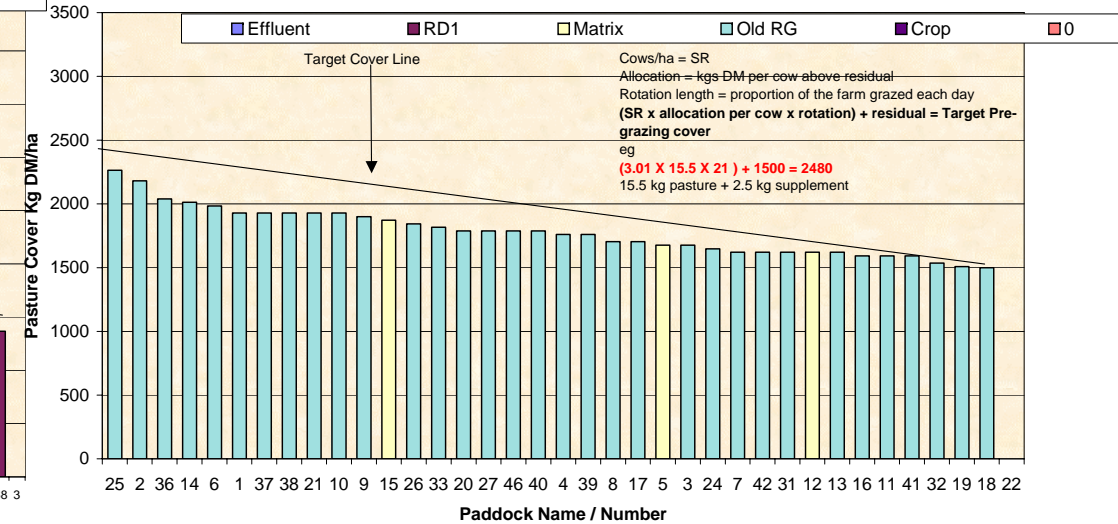
Farm Name: Dave & Mel Goble, Soil Temp: 18.1, 31/01/2008, Wedge Date
 Feed Wedge for Farm Block - Milking, 1953 Average Farm Cover, 12.5 Current Growth Rate



Farm Name: Kevin & Debbie Hall, Soil Temp: 17.6, 30/01/2008, Wedge Date
 Feed Wedge for Farm Block - Milking, 1945 Average Farm Cover, 28.4 Current Growth Rate



Farm Name: George & Jose van der Poel, Soil Temp: 17.2, 30/01/2008, Wedge Date
 Feed Wedge for Farm Block - Milking, 1767 Average Farm Cover, 11.5 Current Growth Rate



Southland Monitor Farm Project

Weekly Update – 24 January 2008

General Comments

Rainfall over the region has been variable during the week. While 20mm was received in Central Southland only 12mm was recorded in Northern Southland. 15.9 mm was recorded at the Demonstration Farm. Growth rates have declined with all farms experiencing growth rates less than 32 kg DM/ha/day. For the third week in a row growth on the Northern Southland farm was less than 10. All the monitor farms are feeding some supplement. Eastern and Central farms are feeding grain in the shed, West Otago is using turnips and pasture silage and Northern is grass silage and molasses. Soil temperatures ranged from 14 to 19 °C. This week we have started to include the N fertiliser use on each farm, however not all the data has been collated when the summary was prepared. Data for Eastern and West Otago should be included next week. The Northern farm has not used artificial N this season.

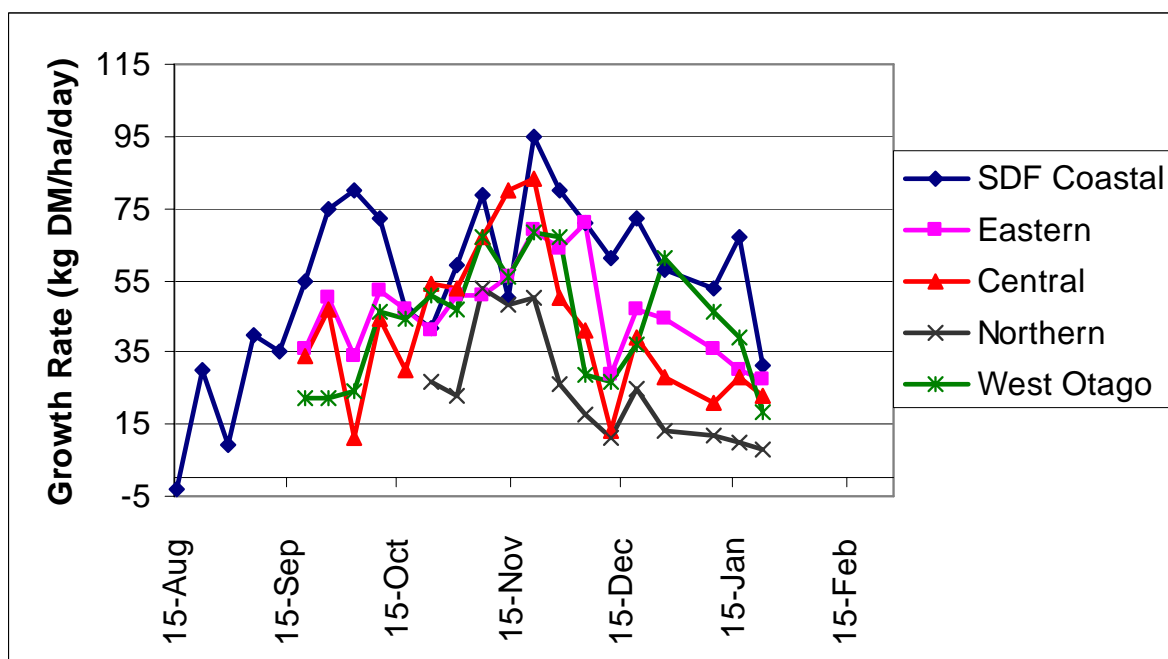
The pasture quality results from 2 weeks ago are presented in the tables below. Quality ranges from 10 to 11.5 ME. Several samples had high crude protein concentrations, probably as a result of N fertiliser that has been applied on 2 farms over the last 2 weeks.

Farm Summary

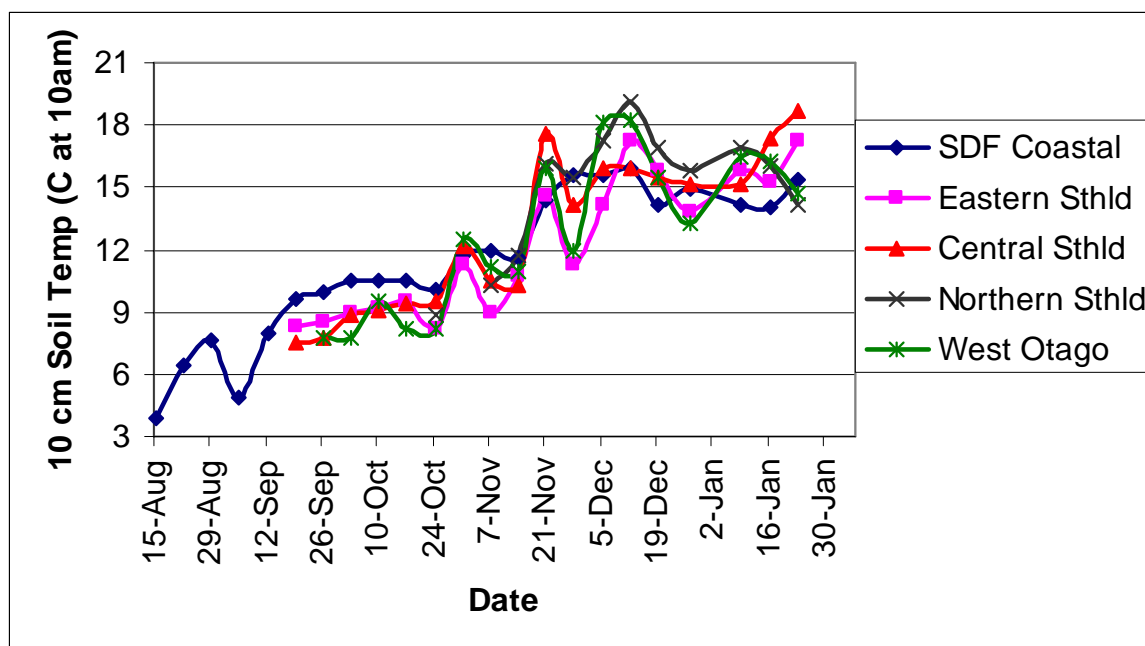
	Demo Farm	Eastern	Central	Northern	West Otago
Average cover (kg DM/ha)	2258	1957	1882	1552	2054
Rotation length (days)	26	25	20	28	20
Supplement (kg DM/cow)	0	1.4	1	8	3
Production (kg MS/cow)	1.64	1.68	1.77	1.43	1.81
Production (kg MS/ha)	4.50	5.25	5.40	3.16	4.98
Stocking rate (cows/ha)	2.85	3.12	3.05	2.21	2.75
N (kg/ha)	123	-	94	0	-
Soil temperature (°C)	15.4	17.3	18.7	14.2	14.7
Growth Rate (kg DM/day)	31.5	27	23	8	18.5

Fertiliser N applications are since July 07.

Pasture Growth Rates



Soil Temperature



Pasture Quality

NOTE: We sample the paddocks immediately in front of the milkers, to height of 3.5cm (7 clicks on the rising plate meter). The RPM data in the table is the pre-grazing clicks recorded on the day of sampling.

Eastern Southland

Description	Date	RPM	% prot	% Lipid	% SSS	% NDF	% ADF	OMD	MJME/kg DM	%DM
Pdk 33	2 Oct	18.2	27.6	5.6	12.8	40.8	23.4	82.9	12.1	15.7
Pdk 34	16Oct	16.8	22.4	4.4	16.9	41.3	25.0	81.6	11.8	18.0
Pdk 55	16Oct	12.8	26.5	4.5	11.7	46.2	26.2	81.1	11.6	15.4
Pdk 25	30 Oct	14.6	26.0	4.1	15.0	43.2	24.0	>85	12.7	19.5
Pdk 29	30 Oct	11.6	23.3	4.3	16.4	40.4	22.2	>85	12.5	17.3
Pdk 33	13Nov	12.8	28.5	4.4	16.4	42.6	22.9	>85	12.6	16.7
Pdk 69	13Nov	14.6	23.6	3.7	15.1	45.2	24.7	82.5	12.2	17.1
Pdk 47	27Nov	16.2	22.6	3.8	15.8	47.1	25.3	84.7	12.4	14.1
Pdk 26	27Nov	18.0	20.1	3.4	14.3	50.6	26.5	80.2	11.8	15.7
Pdk 33	11Dec	17.6	24.9	4.4	14.4	45.8	24.6	80.7	11.8	13.2
Pdk 12	11Dec	13.6	23.9	4.3	14.8	44.3	26.2	78.3	11.4	14.6
Pdk 46	8 Jan	13.0	33.6	5.7	7.1	34.5	25.0	79.7	10.7	14.0
Pdk 53	8 Jan	16.6	24.3	3.9	9.4	51.4	27.2	77.7	11.0	16.6

Southland Monitor Farm Project

Weekly Update – 17 January 2008

General Comments

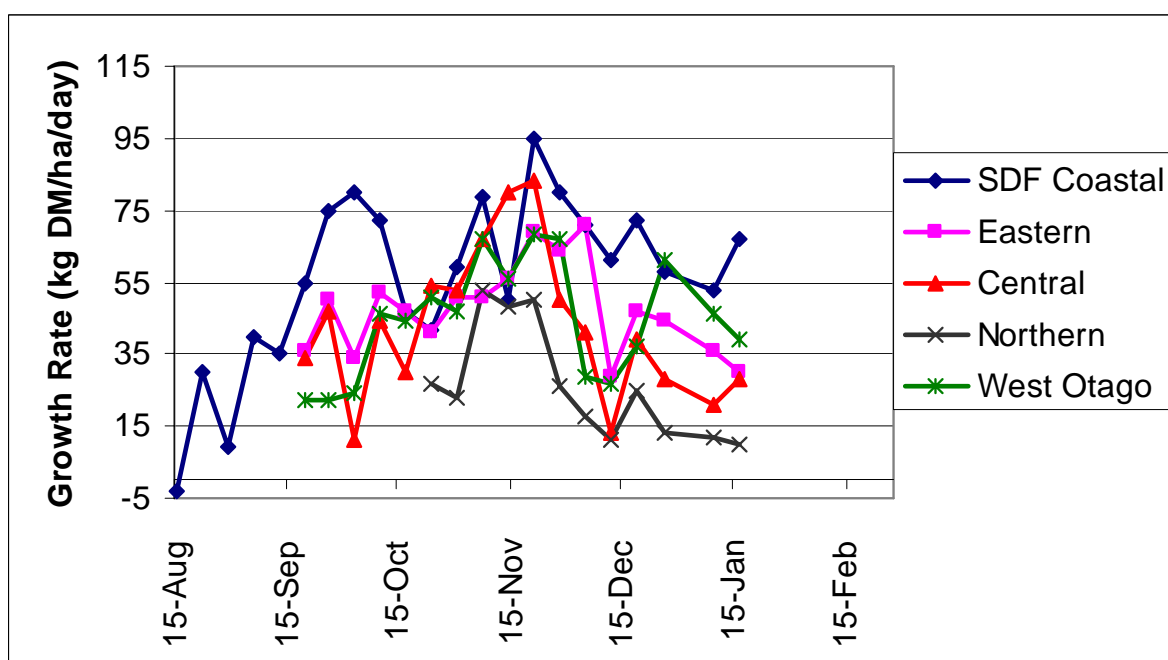
Growth in coastal and central Southland rose this week but all other regions experienced a decline in growth. Soil temperatures have remained between 14 and 17 °C. The demonstration farm has had the lowest average soil temperature for the last 3 weeks. There has been no improvement in growth conditions in Northern Southland with only 10 mm of rain being recorded in the first week of January. The farm is now grazing 1/29th of the farm a day and feeding 8 kg supplement. Central Southland received 18 mm rain on 14th January. We are still waiting on the results of the pasture samples collected last week.

The feed wedges for the Eastern and Central Southland farms show a deficit in the top half of the wedge. The West Otago farm is managing to maintain a good wedge with higher growth rates being recorded over the last 3 weeks.

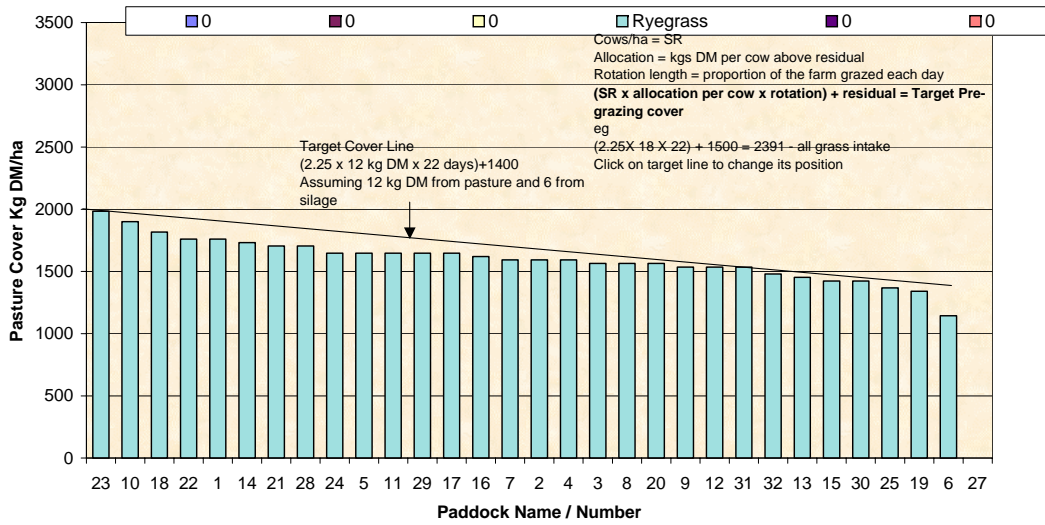
Farm Summary

	Demo Farm	Eastern	Central	Northern	West Otago
Average cover (kg DM/ha)	2439	2027	1903	1609	2189
Rotation length (days)	28	25	19	29	20
Supplement (kg DM/cow)	0	2	1	8	0
Production (kg MS/cow)	1.69	-	1.81	1.50	-
Production (kg MS/ha)	4.7	-	5.46	3.39	-
Stocking rate (cows/ha)	2.9	3.29	3.05	2.26	3.03
Soil temperature (°C)	14.0	15.3	17.4	16.0	16.3
Growth Rate (kg DM/day)	67	30	28	10	39
Comments	1 pdk for silage	2% for silage			

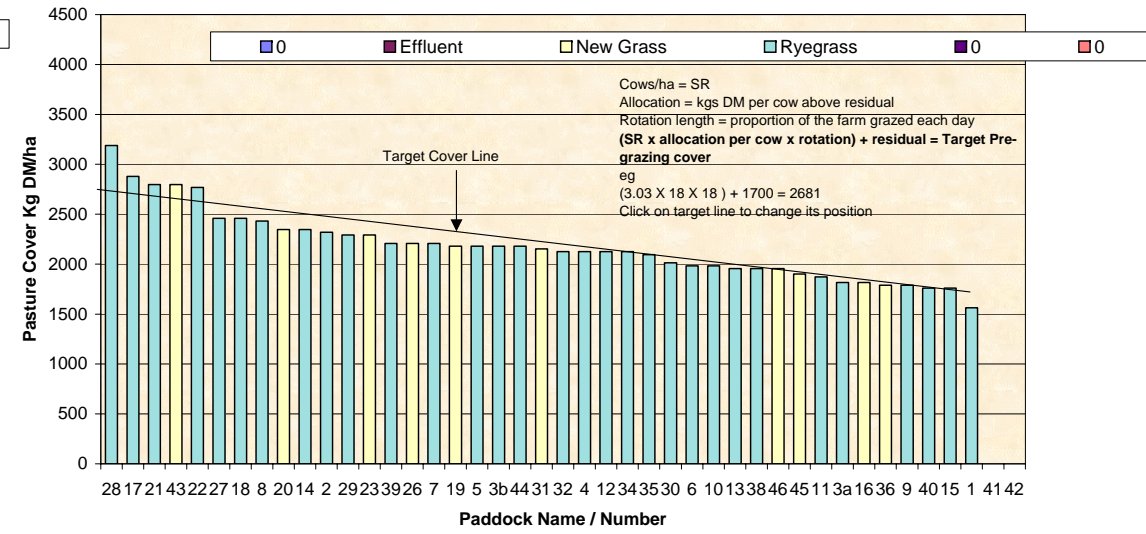
Pasture Growth Rates



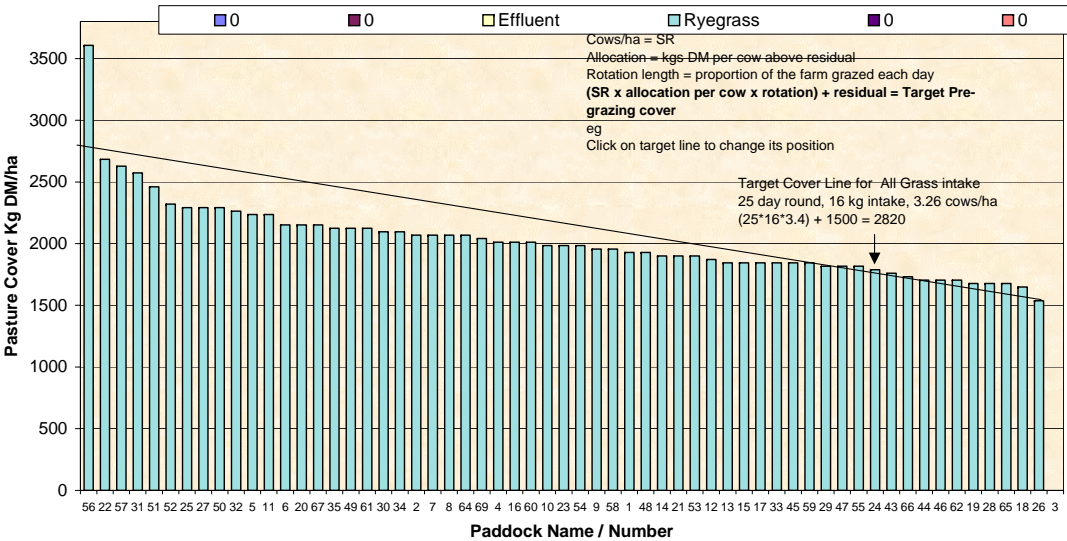
Farm Name Frel Dairy **Soil Temp:** 16.0 **16/01/2008** **Wedge Date**
 1609 **Average Farm Cover**
Feed Wedge for Farm Block - Milking
 9.6 **Current Growth Rate**



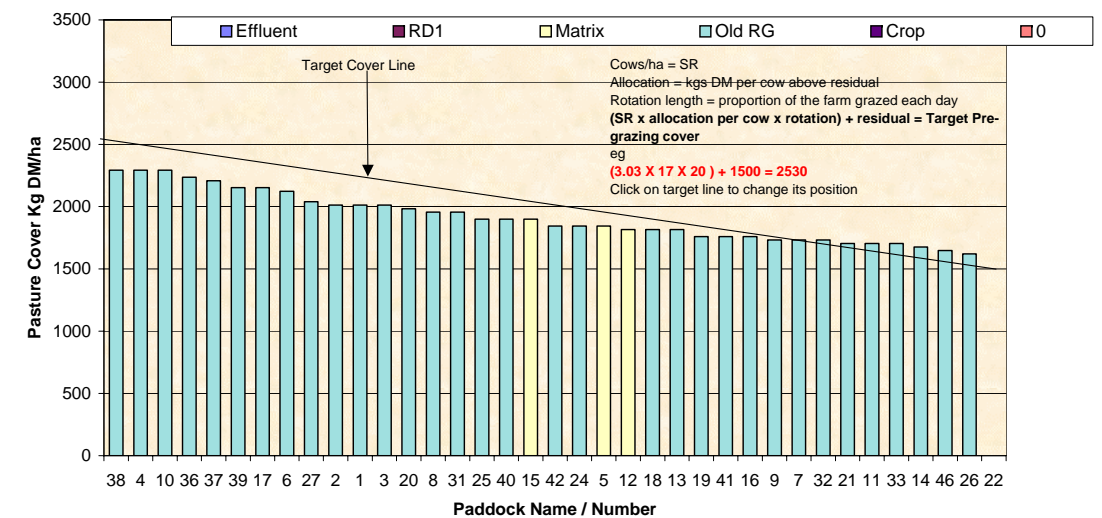
Farm Name Dave & Mel Goble **Soil Temp:** 16.3 **16/01/2008** **Wedge Date**
 2189 **Average Farm Cover**
Feed Wedge for Farm Block - Milking
 38.8 **Current Growth Rate**



Farm Name Kevin & Debbie Hall **Soil Temp:** 15.3 **15/01/2008** **Wedge Date**
 2027 **Average Farm Cover**
Feed Wedge for Farm Block - Milking
 30.0 **Current Growth Rate**



Farm Name George & Jose van der Poel **Soil Temp:** 17.4 **15/01/2008** **Wedge Date**
 1903 **Average Farm Cover**
Feed Wedge for Farm Block - Milking
 28.1 **Current Growth Rate**



Southland Monitor Farm Project

Weekly Update – 10 January 2008

General Comments

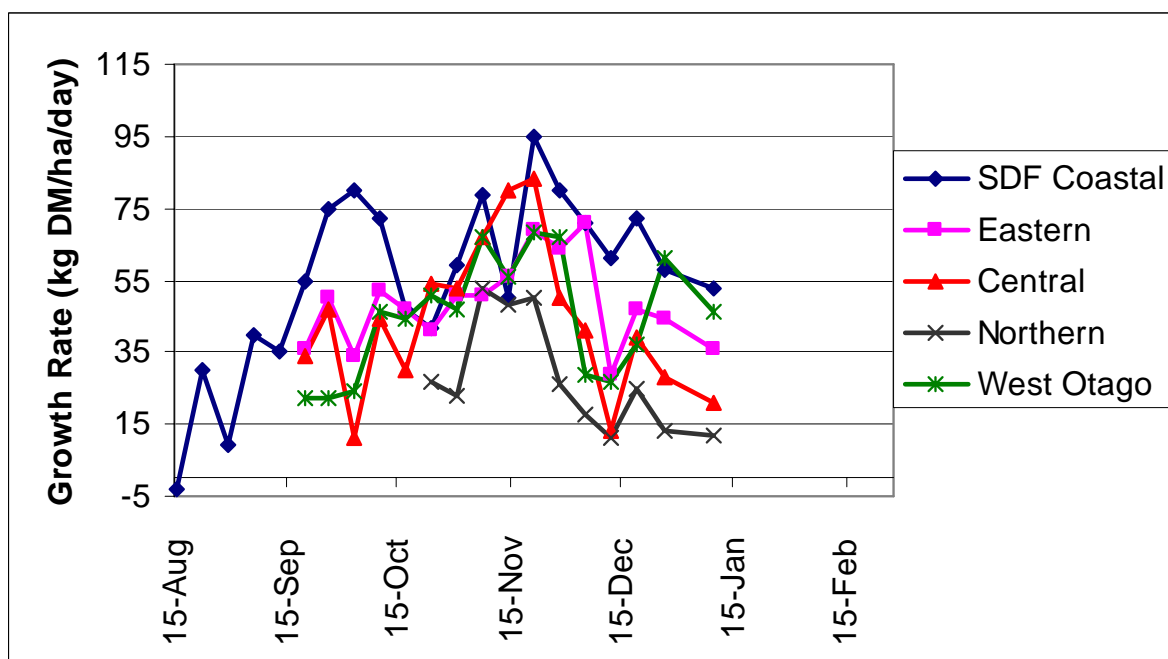
Growth rates have continued to decline in all regions this week. The range is now 12 to 53 kg DM/ha/day. Rain that fell in the last 10 days has done little to improve growth conditions. Soil temperatures have increased to 15-17 °C, except on the demonstration farm. The Northern Southland farm is now very dry and the West Otago one is drying out. This farm still has 4 ha shut for supplement, the result of higher growth over the last 3 weeks. The paddocks that are closed are now too long for grazing so will need to be harvested. Post grazing residuals on several farms are consistently plating in the higher end of the desired range ie 8 clicks or 1600 kg DM/ha, probably a result of the pasture hardening off and containing more stem in the base which will hold the plate higher off the ground. The paddocks are still being grazed to a consistent and even level and the farmers have reported difficulty in getting the cows to graze any lower.

This week I have included the feed wedges for each of the farms in the summary to compare with your farm situation.

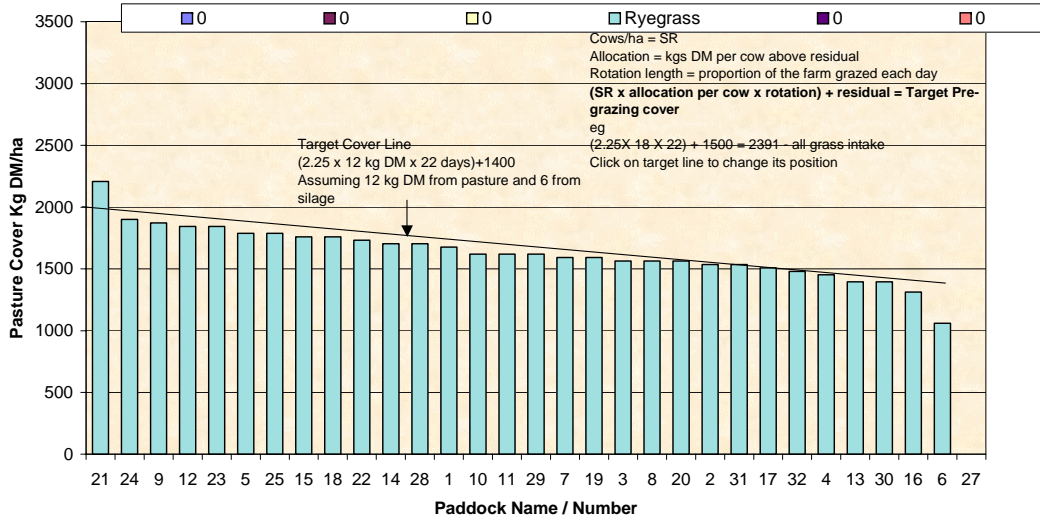
Farm Summary

	Demo Farm	Eastern	Central	Northern	West Otago
Average cover (kg DM/ha)	2316	2063	1892	1644	2327
Rotation length (days)	20	25	20	22	18
Supplement (kg DM/cow)	0	0	1	6	0
Production (kg MS/cow)	1.66	1.65	1.80	1.58	1.90
Production (kg MS/ha)	4.6	5.43	5.43	3.56	5.76
Stocking rate (cows/ha)	2.85	3.29	3.01	2.25	3.03
Soil temperature (°C)	14.1	15.8	15.1	16.9	16.5
Growth Rate (kg DM/day)	53	36	21	12	46
Comments				Very dry	4 ha shut for silage

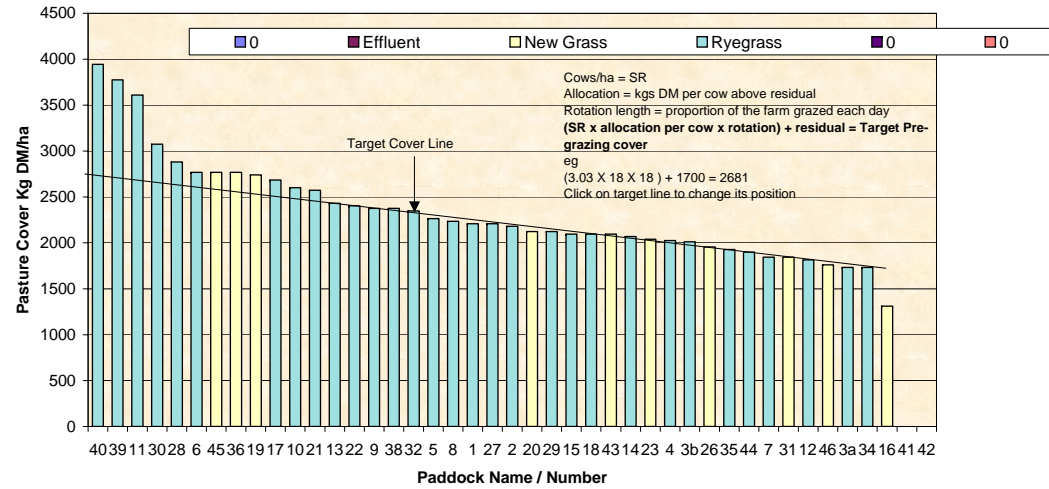
Pasture Growth Rates



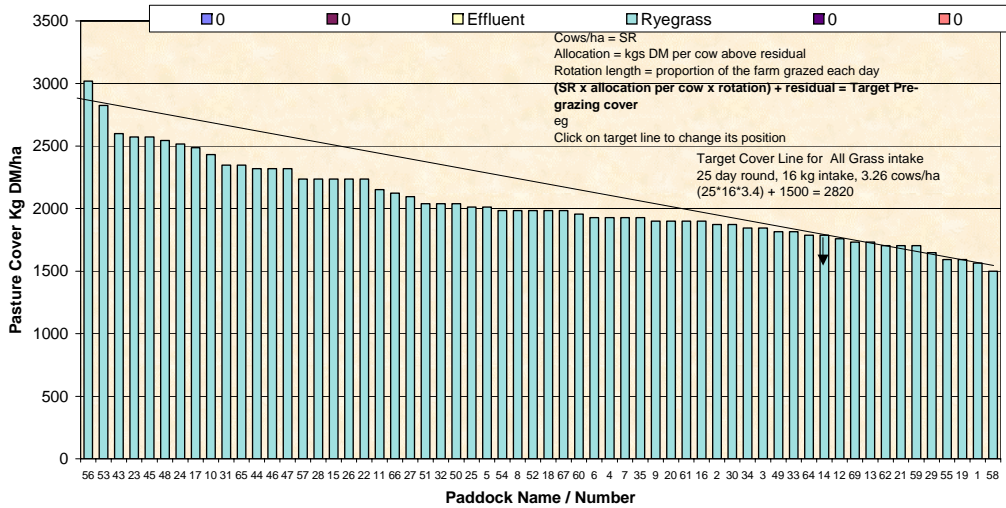
Farm Name: Freil Dairy Soil Temp: 16.9 09/01/2008 Wedge Date: 1644
Feed Wedge for Farm Block - Milking Average Farm Cover: 1644
 Current Growth Rate: 11.7



Farm Name: Dave & Mel Goble Soil Temp: 16.5 09/01/2008 Wedge Date: 2327
Feed Wedge for Farm Block - Milking Average Farm Cover: 2327
 Current Growth Rate: 46.0



Farm Name: Kevin & Debbie Hall Soil Temp: 15.8 08/01/2008 Wedge Date: 2060
Feed Wedge for Farm Block - Milking Average Farm Cover: 2060
 Current Growth Rate: 36.3



Farm Name: George & Jose van der Poel Soil Temp: 15.1 08/01/2008 Wedge Date: 1892
Feed Wedge for Farm Block - Milking Average Farm Cover: 1892
 Current Growth Rate: 21.4

