

Southland Monitor Farm Project

Weekly Update – 23 July 08

General Comments

Soil temperatures have remained around 5-6 C for the last 3 weeks. Generally conditions have been milder than the 2007 winter with fewer frosts keeping soil temperatures higher. Despite the mild conditions growth rates have remained low with the highest growth rates being recorded on the demonstration farm which has the highest average farm cover. Coastal and Eastern Southland have had growth rates higher than the longterm Woodlands average with the other regions similar to or just below the average. Interestingly on 2 of the monitor farms new grass paddocks have continued to grow at 20-30 kg DM/ha/day. A number of paddocks on the farms have recorded zero growth over the last 3 weeks and in some instances the cover has declined.

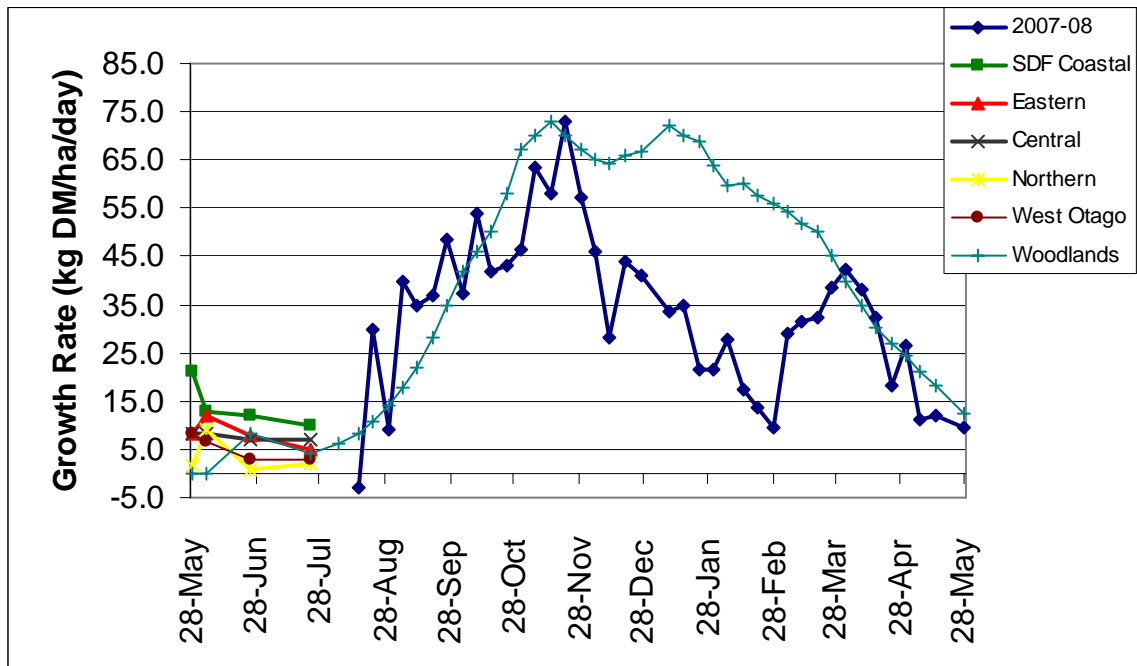
Results of pasture samples collected at the beginning of July are presented in the tables at the end of the summary. Metabolisable energy concentrations vary between 11.3 and 12.5 MJME/kg DM with the lower quality pastures in general being from higher mass paddocks. There is a range in RPM height from 9.4 on the Northern Southland farm to 15.8 on the Eastern Southland farm. Crude protein concentrations are between 25 and 30%. The dry matter of the pasture has continued to increase with the average DM across all samples being 18.4%. As we have seen previously there is a strong negative correlation between the neutral detergent fibre (NDF) concentration and ME ie the higher the NDF the lower the ME.

The next farm walks are scheduled for 8 August.

Farm Summary

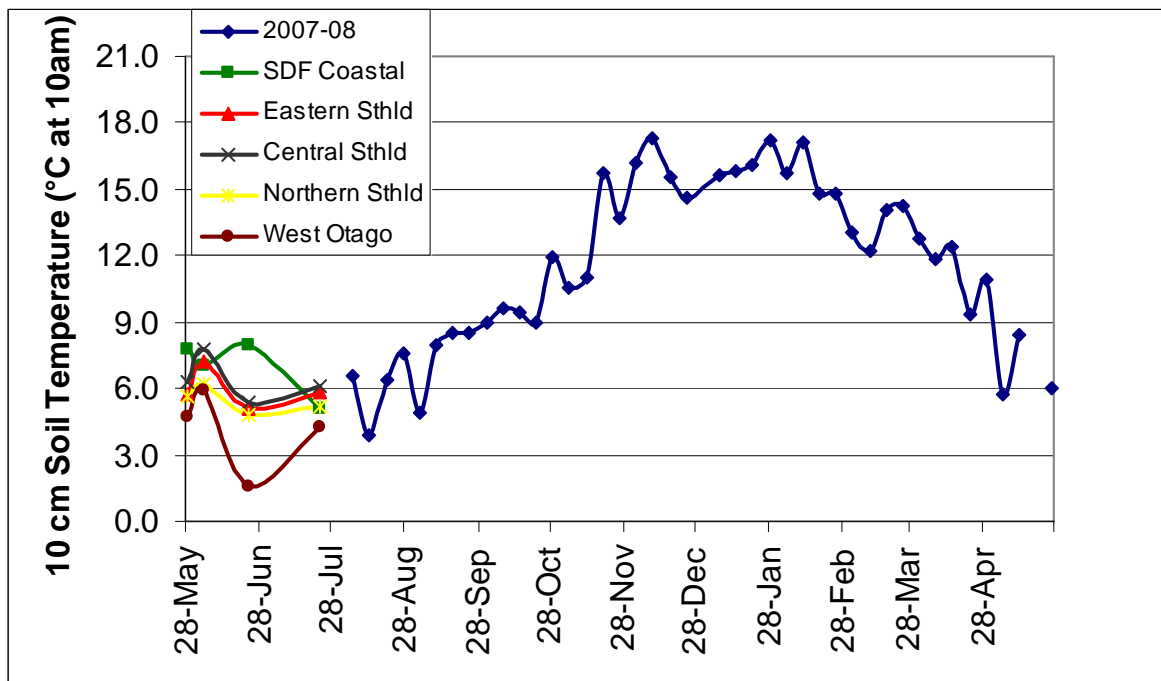
	Demo Farm	Eastern	Central	Northern	West Otago
Average cover (kg DM/ha)	2382	2072	1798	1552	1763
Rotation length (days)	-	-	-	-	-
Percentage in milk	0	0	0	0	0
N (kg/ha)	0	0	0	0	0
Soil temperature (°C)	5.1	5.8	6.1	5.2	4.3
Growth Rate (kg DM/day)	10	5	7	2	3
Rainfall	52	42	32	-	31

Pasture Growth Rates



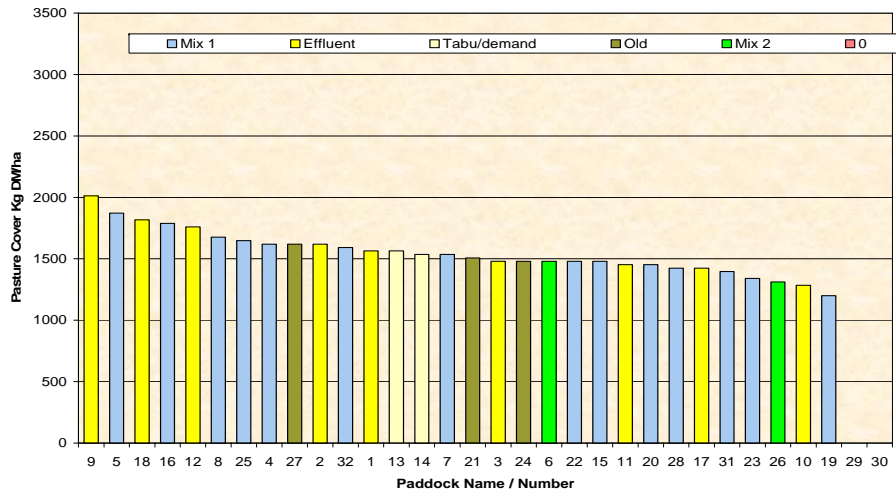
NB the Woodlands data is the long-term average from mature pastures at Woodlands measured using enclosure cages.

Soil Temperature



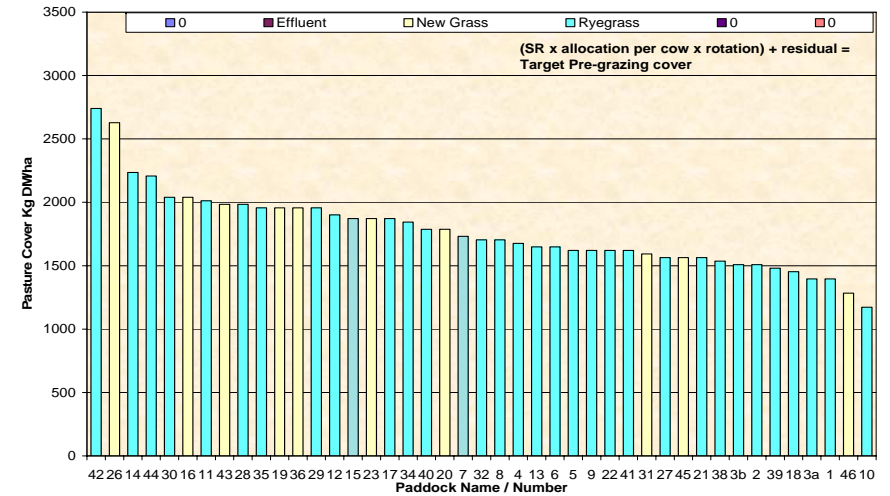
Farm Name: Frel Dairy
 Soil Temp: 23/07/2008
 Wedge Date: 1552
 Average Farm Cover: 2.2
 Current Growth Rate: 2.2

Feed Wedge for Farm Block - Milking



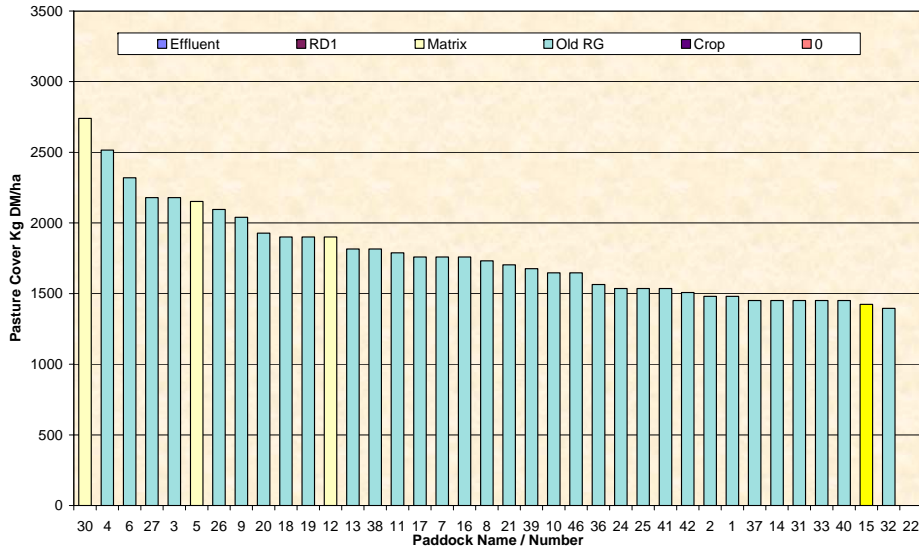
Farm Name: Dave & Mel Goble
 Soil Temp: 4.3
 Wedge Date: 1763
 Average Farm Cover: 3.0
 Current Growth Rate: 3.0

Feed Wedge for Farm Block - Milking



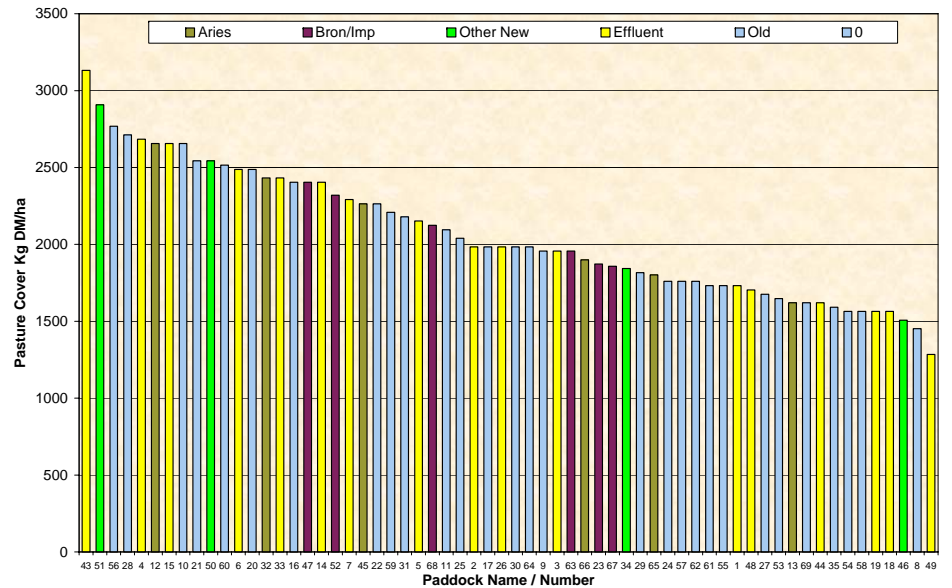
Farm Name: George & Jose van der Poel
 Soil Temp: 22/07/2008
 Wedge Date: 1798
 Average Farm Cover: 7.0
 Current Growth Rate: 7.0

Feed Wedge for Farm Block - Milking



Farm Name: Kevin & Debbie Hall
 Soil Temp: 5.8
 Wedge Date: 2072
 Average Farm Cover: 5.0
 Current Growth Rate: 5.0

Feed Wedge for Farm Block - Milking



Southland Monitor Farm Project

Weekly Update – 2 July 08

General Comments

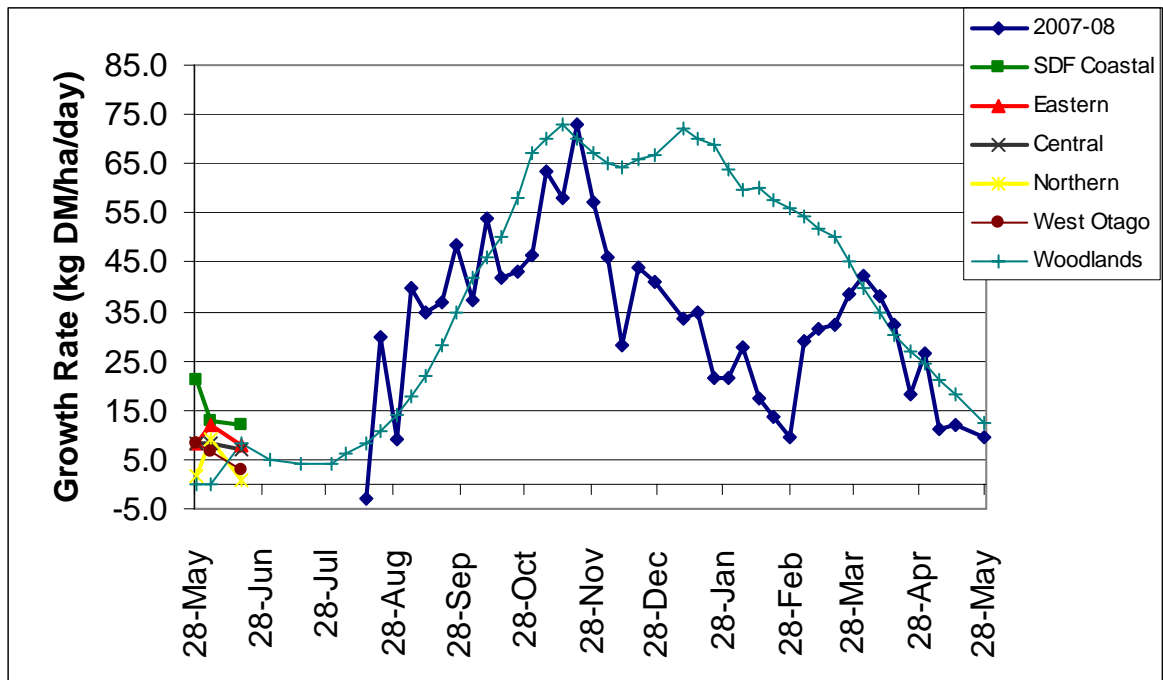
Soil temperatures have remained low on all farms over the last 3 weeks. The range in recorded values is due to differences in the day the reading was taken. The cold wet conditions have resulted in very low growth rates recorded on all farms since the last walk. Many paddocks on the farms have recorded zero growth over the last 3 weeks and in some instances the cover has declined. The farm walk for the West Otago and Northern Southland farms was abandoned last week (26th June) due to snow blanketing both farms. These farms were walked on the 1st July. The remaining 3 farms were walked on Wednesday 25th June.

The next farm walks are scheduled for 22 July and 8 August.
The demonstration farm will have an additional measurement on 9th July.

Farm Summary

	Demo Farm	Eastern	Central	Northern	West Otago
Average cover (kg DM/ha)	2200	1948	1626	1510	1725
Rotation length (days)	-	-	-	-	-
Percentage in milk	0	0	0	0	0
N (kg/ha)	0	0	0	0	0
Soil temperature (°C)	8.0	5.1			1.9
Growth Rate (kg DM/day)	12	8	7	1	3
Rainfall	66	62			100

Pasture Growth Rates



NB the Woodlands data is the long-term average from mature pastures at Woodlands measured using enclosure cages.

Soil Temperature

