

# Southland Monitor Farm Project

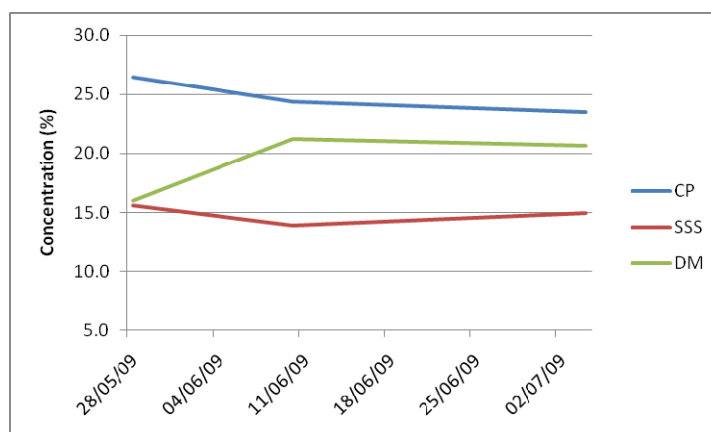
## Weekly Update – 22 July 09

### General Comments

Soil temperatures in many regions have remained low over the last 3 weeks although this week they are similar to last year's average. Growth rates have remained in single figures across the regions over the last measurement period. Average pasture covers are significantly below this time last year on many of the monitor farms. Only the Northern Southland farm has an APC higher than July 2008. APC on the Eastern Southland farm is likely an underestimate this week as conditions during the second half of the farm walk were very wet and many paddocks recorded covers lower than 3 weeks earlier.

	Demo Farm	Eastern	Central	Northern	West Otago
Average cover 2007-08	2382	2072	1798	1552	1763
Average cover 2008-09	1740	1850	1551	1623	1697

Over the last 3 months we have been monitoring the pasture quality in the same 2 paddocks on each farm. The figure below shows the changes in average crude protein, soluble sugars and DM concentration during this time. There were no significant changes in fibre content during this period and metabolisable energy concentration average 12 MJME/kg DM for May and June and declined to 11.8 MJME/kg DM in July.



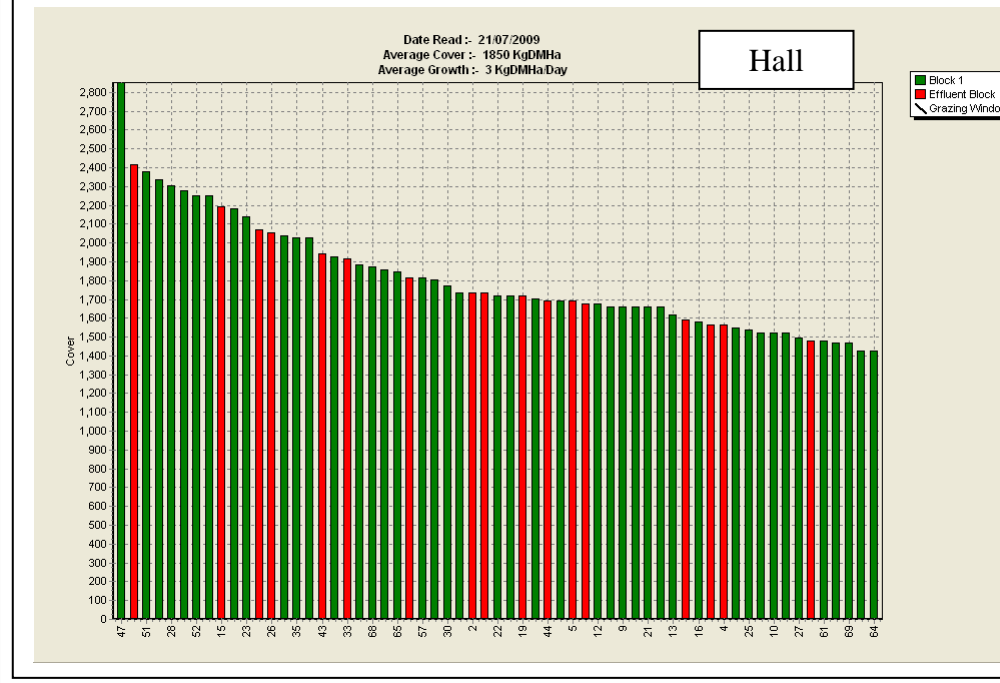
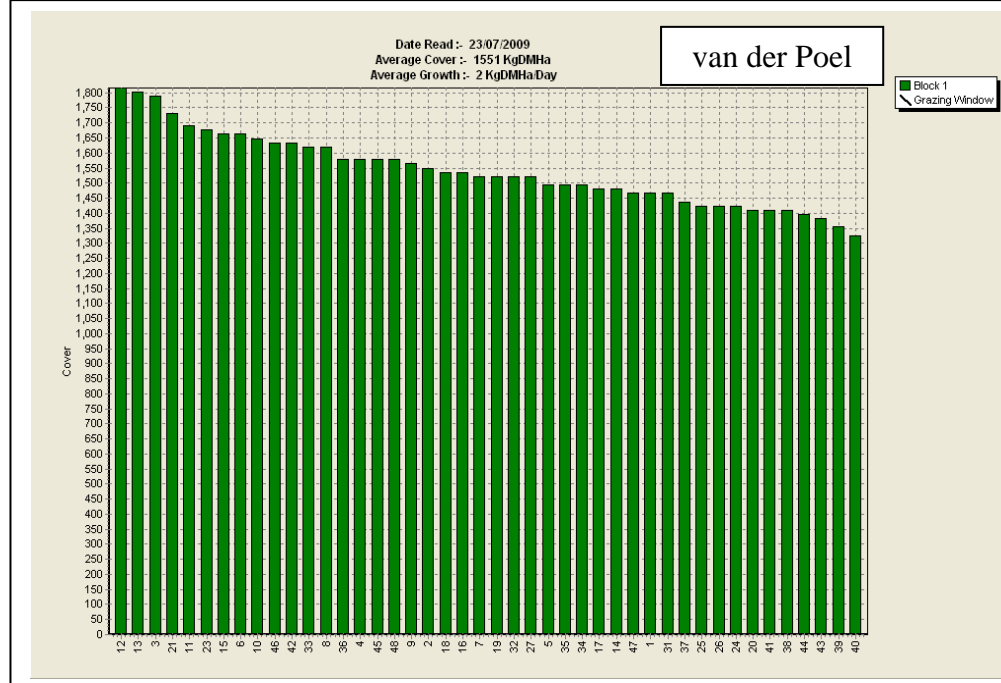
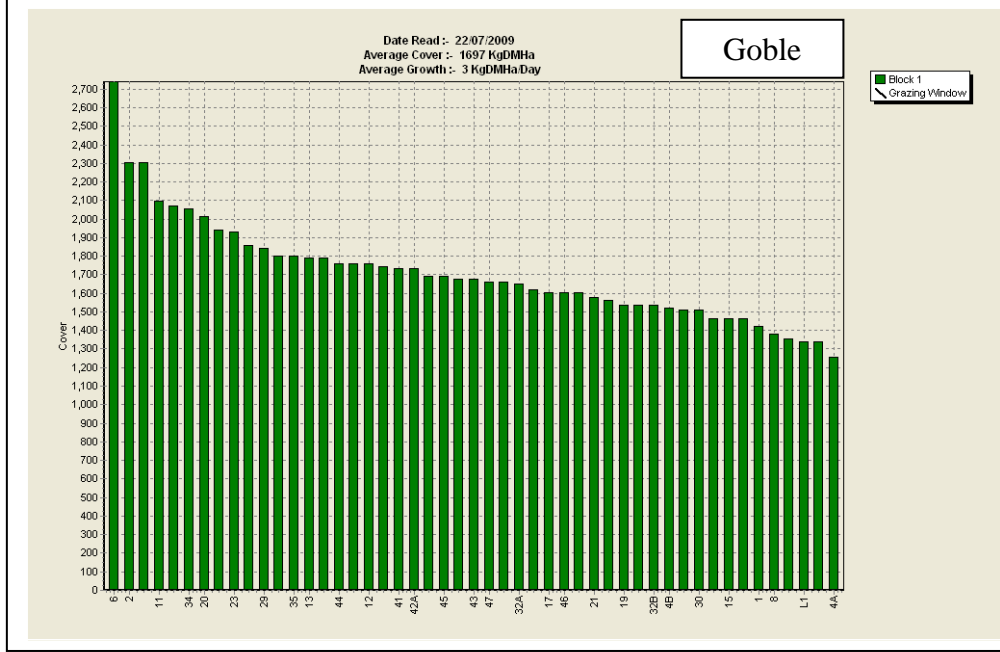
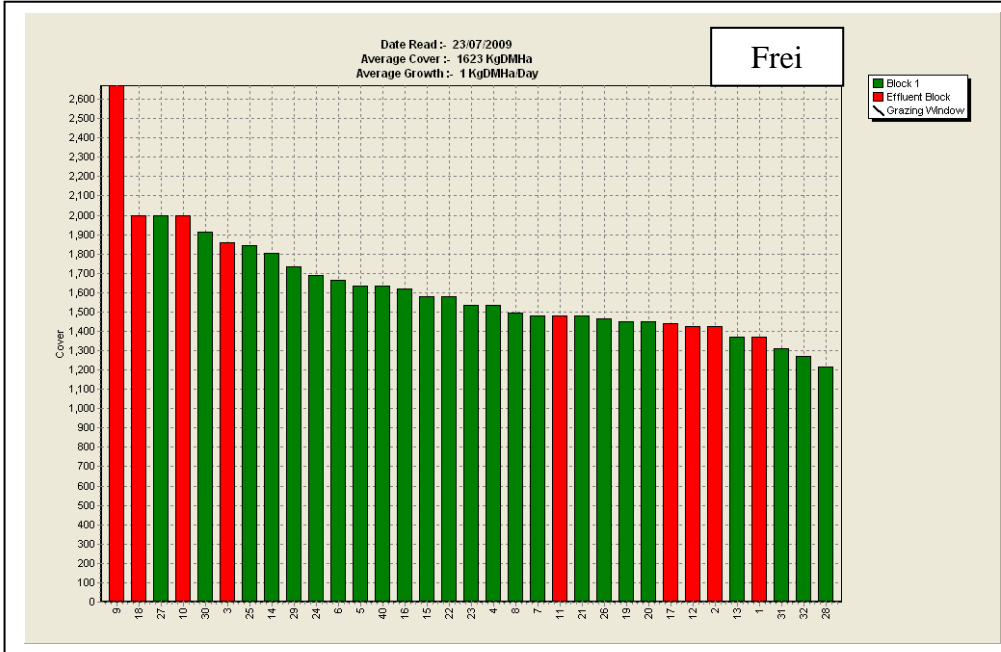
### Weekly Tips

Discuss transport arrangement with graziers and ensure cows are stood off before being trucked or walked home. Face your feed situation – walk the farm, confirm the size of any deficit and develop a plan on how you will fill the deficit. Share your plan and seek advice. Monitor actual pasture cover weekly and adjust the plan if necessary. If you do not have the feed (pasture or supplement) restrict cows at the start of calving to minimise the size of the deficit.

### Farm Summary

	Demo Farm	Eastern	Central	Northern	West Otago	Telford
Average cover (kg DM/ha)	1740	1850	1551	1623	1697	1978
Supplement (kg/cow/day)	-	-	-	-	-	-
Soil temperature (°C)	5.1	5.9	5.8	5.5	-	4.5
Growth Rate (kg DM/day)	4	3	2	1	3	3
Rainfall	10	70	41	-	45	30
Comments		very wet for 2 <sup>nd</sup> half of walk				





## Pasture Quality

NOTE: We sample the paddocks immediately in front of the milkers, to height of 3.5cm (7 clicks on the rising plate meter). The RPM data in the table is the pre-grazing clicks recorded on the day of sampling.

## Eastern Southland

Description	Date	RPM	% prot	% Lipid	% SSS	% NDF	% ADF	OMD	MJME/ kg DM	%DM
Pdk 16	25Jun	13.8	24.3	3.9	15.4	49.8	28.2	80.6	11.8	16.7
Pdk 43	25 Jun	15.8	26.2	4.8	12.1	50.7	27.2	78.2	11.3	15.9
Pdk 43	22 Jul	18.8	24.8	4.4	14.1	52	26	78.6	11.5	16.0
Pdk 16	22 Jul	13.6	26.4	4.7	14.5	48.0	24.7	82.7	11.9	17.7
Pdk 43	5 Aug	13.1	26.1	5.3	15.5	44.0	24.0	80.3	11.5	15.1
Pdk 16	5 Aug	13.6	25.2	4.8	16.9	40.9	25.4	81.3	11.6	15.0
Pdk 16	19 Aug	13.6	24.3	4.3	15.5	42.7	26.1	80.7	11.6	15.5
Pdk 50	19 Aug	16.2	26.9	5.3	15.1	42.4	24.6	82	12	14.2
Pdk 52	2 Sep	16.0	23.3	4.9	16.1	43.1	24.4	80.1	11.6	22.0
Pdk 2	2 Sep	14.0	26.6	5.8	11.4	45.3	24.2	78.2	11.2	19.2
Pdk 1	16 Sep	9.8	26.1	5.9	10.5	47.7	25.8	78	11.3	19.7
Pdk 7	16 Sep	13.4	24.6	5.6	13.2	47.0	24.6	79.3	11.5	19.8
Pdk 47	30 Sep	12.8	33.3	5.2	11.0	45.1	22.3	>85	>12.7	15.8
Pdk 64	30 Sep	15.0	28.8	5.2	14.6	44.8	24.1	84.9	12.5	16.4
Pdk 57	14 Oct	14.0	30.3	6.1	12.5	43.7	24.2	82.0	11.8	18.5
Pdk 30	14 Oct	14.4	33.1	5.7	13.4	41.0	24.0	84.6	12.3	17.5
Pdk 43	28 Oct	17.2	25.6	4.9	15.3	46.4	25.0	82.8	12.1	18.0
Pdk 11	28 Oct	14.2	24.2	4.7	14.5	48.2	24.8	79.7	11.8	18.7
Pdk 46	11 Nov	12.2	29.4	5.0	11.1	43.9	24.3	83.9	12.0	11.9
Pdk 52	11 Nov	12.0	32.1	5.5	11.1	40.7	22.7	84.9	11.8	12.7
Pdk 2	25 Nov	13.6	33.0	5.9	7.7	40.6	26.9	80.6	11.0	13.4
Pdk 11	25 Nov	13.1	29.4	5.0	6.0	45.1	26.1	74.3	10.4	15.8
Pdk 69	9 Dec	14.8	28.1	5.1	12.6	46.0	23.1	82.5	12.0	13.8
Pdk 7	9 Dec	12.3	26.1	4.9	14.9	44.3	23.3	82.0	12.1	14.5
Pdk 7	6 Jan	16.4	23.9	4.4	13.4	46.9	24.4	80.7	12.0	17.3
Pdk 2	6 Jan	17.8	28.1	5.1	12.9	42.5	24.1	82.4	11.8	16.3
Pdk 3	21 Jan	17.5	25.9	4.5	13.8	43.7	24.0	83.2	12.1	11.5
Pdk 12	21 Jan	16.0	22.9	3.7	12.2	50.4	26.3	78.9	11.7	14.7
Pdk 28	3 Feb	17.9	28.5	5.1	14.0	40.9	23.7	83.8	12.0	13.9
Pdk 34	3 Feb	15.7	24.2	4.4	14.8	47.8	26.2	82.0	11.9	16.5
	17 Feb									
	17 Feb									
Pdk 45	3 Mar	18.9	26.1	4.4	<1	52.8	24.8	78.8	10.7	13.0
Pdk 51	3 Mar	15.6	30.8	5.3	9.4	44.4	23.4	83.5	11.7	13.3
Pdk 9	17 Mar	18.4	27.3	5.3	14.4	40.4	23.9	82.4	11.8	12.5
Pdk 50	17 Mar	18.9	26.8	5.1	11.4	44.7	25.0	80.0	11.6	11.9
Pdk 57	31 Mar	17.8	29.5	5.4	10.6	46.4	24.8	83.2	11.9	11.9
Pdk 67	31 Mar	17.2	31.2	5.6	10.3	43.6	22.2	>85	12.2	11.7
Pdk 51	14 Apr	15.8	31.9	4.6	9.1	42.5	21.9	88.2	>12.7	14.3
Pdk 65	14 Apr	15.9	27.8	5.0	12.1	39.6	21.3	83.8	12.2	14.2
Pdk 30	28 Apr	17.7	29.3	5.7	12.8	43.6	21.6	>85	12.4	15.7
Pdk 68	28 Apr	15.7	27.6	5.2	12.9	44.1	24.7	82.7	11.9	15.1
Pdk 56	12 May	15.0	29.5	5.0	11.0	40.7	23.4	83.4	12.1	13.8
Pdk 34	12 May	13.0	29.8	5.7	14.6	34.8	22.2	>85	12.3	13.7
Pdk 23	26 May	10.9	30.3	4.9	11.6	37.6	23.3	>85	12.5	14.7
Pdk 66	26 May	10.7	27.1	4.6	12.5	39.7	23.5	84.3	11.9	13.4
Pdk 66	10 Jun	11.5	22.1	4.3	14.4	45.7	23.7	79.9	11.9	21.7
Pdk 23	10 Jun	10.5	26.8	4.7	13.2	43.9	21.5	84.6	12.5	18.7
Pdk 23	30 Jun	12.2	25.9	4.4	12.3	41.8	24.2	82.4	12.0	19.6
Pdk 66	30 Jun	11.2	21.6	4.0	15.0	42.2	24.9	80.9	11.8	20.4



## West Otago

Description	Date	RPM	% prot	% Lipid	% SSS	% NDF	% ADF	OMD	MJME/kg DM	%DM
Pdk 14	2 Jul	11.8	27.1	5.0	10.6	48.6	25.2	79.1	11.5	21.1
Pdk 26	2 Jul	14.2	27.4	5.2	13.3	43.3	21.5	84.0	12.4	20.7
Pdk 14	23 Jul	12.4	28.8	5.3	13.5	43.3	25.4	80.2	11.5	15.8
Pdk 26	23 Jul	15.2	30.5	5.4	11.3	44.7	23.5	82.8	11.8	14.2
Pdk 14	5 Aug	13.4	29.0	5.4	13.0	45.3	23.9	79.6	11.4	17.0
Pdk 26	5 Aug	18.2	29.1	5.6	12.9	41.5	24.1	81.5	11.7	15.9
Pdk 14	20 Aug	13.4	25.6	4.8	15.2	43.7	25	81.5	11.9	21.2
Pdk 42	20 Aug	23.0	22.1	4.8	17.7	44.4	22.2	>85	>12.7	17.3
Pdk 17	3 Sep	14.8	28.3	5.5	10.2	46.2	24.9	77.8	11.1	16.3
Pdk 42	3 Sep	11.3	22.3	5.4	17.4	43.4	21.3	>85	>12.7	18.6
Pdk 27	17 Sep	14.2	29.4	5.9	12.0	44.6	23.5	84	12.3	19.8
Pdk 12	17 Sep	13.7	29.6	5.7	11.5	47.1	23.4	83.3	12.1	18.9
Pdk 35	1 Oct	13.0	32.1	6.0	14.6	38.2	21.4	>85	12.6	14.2*
Pdk 2	1 Oct	14.6	30.4	6.3	14.2	40.0	20.9	>85	12.6	17.1
Pdk 27	15 Oct	14.2	30.5	5.8	14.3	38.7	23.3	>85	>12.7	19.0
Pdk 45	15 Oct	17.4	29.9	6.5	14.7	36.9	22.2	>85	>12.7	14.3
Pdk 14	29 Oct	16.0	31.9	5.5	10.3	40.0	22.2	86.1	12.0	17.1
Pdk 35	29 Oct	17.2	26.1	5.4	15.2	39.5	22.9	84.9	12.3	18.2
Pdk 23	12 Nov	13.4	28.0	5.6	11.4	40.1	23.2	85.6	12.4	16.0
Pdk 44	12 Nov	19.2	28.8	5.6	9.7	40.1	22.7	84.5	12.0	16.5
Pdk 18	26 Nov	15.8	30.6	5.7	8.3	45.0	24.5	77.4	11.0	17.4
Pdk 31	26 Nov	12.0	35.0	6.3	9.2	33.3	22.7	83.8	11.4	15.3
Pdk 46	10 Dec	16.6	25.6	5.2	15.4	39.7	24.1	79.3	11.6	16.9
Pdk 18	10 Dec	23.0	20.1	4.2	13.1	52.8	28.2	74.3	11.0	19.0
Pdk 31	7 Dec	15.8	25.9	4.1	13.1	46.3	24.6	82.8	12.0	18.3
Pdk 43	7 Dec	13.0	26.3	5.1	17.5	41.7	23.8	>85	12.7	17.0
Pdk 36	21 Jan	16.7	27.5	4.2	10.9	40.0	25.8	79.9	11.3	17.6
Pdk 29	21 Jan	15.5	30.4	5.0	9.8	38.3	25.3	82.1	11.5	15.5
Pdk 9	4 Feb	13.8	26.5	4.2	10.7	51.2	27.6	78.4	10.9	14.3
Pdk 41	4 Feb	12.2	26.6	4.3	11.0	45.0	26.5	79.2	11.2	14.1
Pdk 10	19 Feb	11.0	26.6	4.9	14.5	39.6	22.5	84.7	12.1	15.7
Pdk 14	19 Feb	13.4	27.8	5.2	13.1	43.1	24.2	82.3	11.8	21.3
Pdk 9	3 Mar	14.2	30	5.0	8.9	47.5	26.0	79.6	11.2	15.4
Pdk 17	3 Mar	15.1	27.4	4.7	10.9	46.9	26.6	78.2	11.0	16.0
Pdk 27	18 Mar	13.2	31.1	5.9	9.8	41.2	24.0	81.8	11.4	13.0
Pdk 28	18 Mar	14.0	31.6	5.8	9.1	41.9	25.1	79.2	11.0	13.8
Pdk 14	1 Apr	14.6	28.9	5.5	14.0	41.1	24.8	84.4	12.1	12.5
Pdk 42	1 Apr	14.8	31.3	5.1	13.1	39.2	23.2	>85	12.1	13.2
Pdk 20	15 Apr	15.5	27.3	4.8	9.6	49.0	22.1	85.8	12.3	14.9
Pdk 44	15 Apr	16.9	32.1	5.5	10.3	44.8	21.7	86.9	12.5	14.5
Pdk 42B	29 Apr	11.1	29.7	5.4	14.3	36.3	22.6	>85	12.3	12.3
Pdk 29	29 Apr	10.4	28.6	4.9	11.0	45.8	23.6	84.2	12.2	14.9
Pdk 35	27 May	9.3	24.3	4.6	19.5	44.5	26.3	80.3	11.5	17.5
Pdk 9	27 May	9.1	25.1	4.7	18.3	46.7	23.7	83.7	12.2	15.
Pdk 35	11 Jun	7.9	26.3	4.8	13.3	45.6	23.1	80.1	12.0	22.2
Pdk 9	11 Jun	8.6	25.6	4.9	13.6	41.1	21.4	78.9	12.1	20.7
Pdk 35	1 Jul	8.2	25.1	4.8	13.7	39.0	24.9	80.0	11.5	19.8
Pdk 9	1 Jul	9.5	24.0	4.9	15.1	39.6	24.4	79.9	11.6	21.0

## Northern Southland

Description	Date	RPM	% prot	% Lipid	% SSS	% NDF	% ADF	OMD	MJME/kg DM	%DM
Pdk 18	2 Jul	9.4	25.8	4.9	15.7	44.0	22.8	84.3	12.3	18.4
Pdk 9	2 Jul	10.4	26.5	4.5	16.6	40.2	23.2	>85	12.4	15.0
Pdk 9	23 Jul	10.8	28.6	4.7	10.6	49.2	24.5	80.0	11.7	13.9
Pdk 18	23 Jul	9.4	23.7	4.5	16.6	46.5	25.1	81.2	11.7	15.0
Pdk 9	5 Aug	11.8	27.2	5.2	18.2	39.7	22.8	84.4	12.3	18.8
Pdk 18	20 Aug	9.4	23.6	4.7	17.6	42.9	23.1	85	12.6	24.8
Pdk 14	20 Aug	10	26.3	5.6	20.5	33.1	21.1	>85	>12.7	21.7
Pdk 4	3 Sep	12.8	30.0	5.7	8.9	49.1	22.5	78.7	11.7	19.5
Pdk 32	3 Sep	9.2	23.7	4.8	16.7	41.4	22.4	84.3	12.2	18.5
Pdk 12	17 Sep	9.2	33.8	5.9	12.0	36.6	22.4	>85	12.3	14.2*
Pdk 8	17 Sep	11.0	29.8	5.5	13.2	40.4	22.6	84.7	12.1	14.6*
Pdk 25	1 Oct	11.0	25.3	5.2	15.6	42.8	24.4	82.8	12.1	19.0
Pdk 18	15 Oct	11.6	24.8	5.0	19.7	42.8	22.4	>85	>12.7	20.0
Pdk 8	15 Oct	13.4	31.1	5.2	15.5	37.7	22.5	>85	>12.7	16.5
Pdk 21	29 Oct	13.2	32.2	5.8	11.9	37.9	24.0	82.9	11.8	16.0
Pdk 17	29 Oct	13.8	28.1	4.8	14.9	35.8	24.4	82.8	11.8	15.9
Pdk 9	12 Nov	13.6	28.9	3.9	13.3	39.9	24.2	84.8	12.4	17.9
Pdk 6	12 Nov	15.2	28.1	5.0	13.1	39.5	25.2	83.2	12.0	17.8
Pdk 26	26 Nov	12.6	31.6	4.5	12.2	38.1	24.1	83.9	12.0	15.9
Pdk 2	26 Nov	14.4	26.6	4.7	14.2	41.8	25.5	78.6	11.3	17.3
Pdk 5	10 Dec	15.2	19.3	3.9	16.4	47.5	27.4	73.5	10.5	17.8
Pdk 29	10 Dec	24.6	13.9	3.7	13.4	59.1	32.7	65.7	10.0	21.1
Pdk 32	7 Jan	12.6	20.0	3.7	13.0	48.8	28.6	71.9	10.5	22.7
Pdk 25	7 Jan	11.8	22.6	4.0	12.4	47.9	26.4	74.0	10.8	22.9
Pdk 27	21 Jan	13.8	24.8	3.9	13.6	44.4	25.8	79.2	11.4	18.1
Pdk 18	21 Jan	15.2	21.1	3.5	17.2	45.8	27.2	78.7	11.2	20.8
Pdk 31	4 Feb	11.1	23.1	4.2	15.6	45.0	28.0	74.1	10.5	29.8
Pdk 30	4 Feb	12.2	26.6	4.3	11.0	45.0	26.5	79.2	11.2	14.1
Pdk 4	18 Feb	8.6	18.1	3.7	12.3	51.1	29.8	66.9	9.8	30.2
Pdk 8	18 Feb	9.4	19.5	3.9	15.5	49.4	27.2	76.2	11.1	25.9
Pdk 11	4 Mar	9.2	24.5	4.3	18.6	51.1	24.4	83.5	12.6	18.8
Pdk 15	4 Mar	9.9	23.8	11.1	18.1	47.0	26.4	79.9	11.8	21.9
Pdk 6	18 Mar	10.5	24.9	5.1	12.5	45.8	25.8	78.3	11.0	13.5
Pdk 40	18 Mar	11.6	27.6	5.2	11.4	36.2	23.8	82.4	11.5	12.2
Pdk 22	1 Apr	12.2	27.7	4.3	11.5	44.6	23.6	>85	12.5	15.7
Pdk 17	1 Apr	11.1	25.1	4.6	15.2	44.8	23.7	84	12.3	17.2
Pdk 40	15 Apr	9.3	29.8	4.6	10.3	42.2	23.5	84.2	11.8	12.8
Pdk 50	15 Apr	15.0	28.2	4.7	12.4	44.1	24.3	83.9	11.9	13.1
Pdk 22	29 Apr	10.7	25.1	5.0	14.6	42.0	24.0	82.6	12.0	17.6
Pdk 28	29 Apr	8.5	24.8	4.5	14.0	45.1	24.4	81.8	12.0	17.9
Pdk 9	27 May	16.8	24.9	4.9	19.2	43.9	23.3	84.7	12.1	15.3
Pdk 30	27 May	9.6	25.3	5.1	20.5	39.6	24.0	84.3	12.3	16.2
Pdk 9	11 Jun	17.4	22.3	4.0	14.6	45.8	24.2	78.7	11.7	18.7
Pdk 30	11 Jun	10.2	24.8	4.5	13.8	46.4	23.7	80.0	12.1	19.3
Pdk 9	1 Jul	15.5	22.3	4.3	18.3	37.2	22.9	80.0	11.9	21.6
Pdk 30	1 Jul	9.6	21.7	4.1	15.3	44.1	25.1	79.0	11.8	21.3

- \* Pasture sample collected in wet conditions

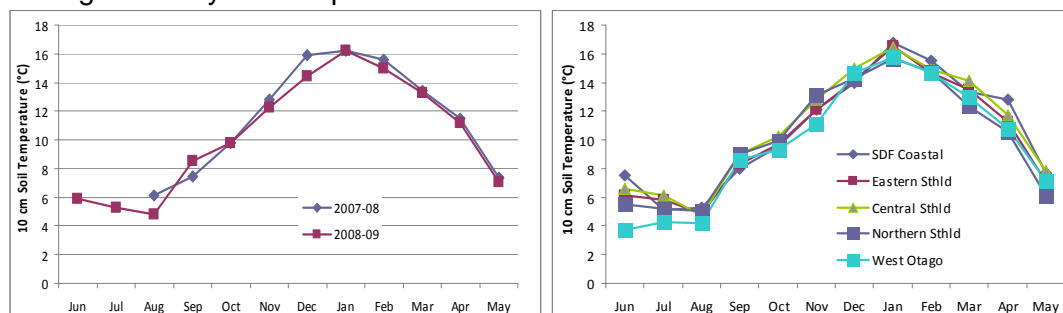
# Southland Monitor Farm Project

## Weekly Update – 1 July 2009

### General Comments

Soil temperatures in many regions are lower than the average for Southland last winter and are up to 4 °C lower than recorded 3 weeks ago. Growth rates are also lower than the average for last winter with several regions recording no net herbage accumulation over the last 3 weeks. The cold frost conditions have made it difficult for pasture assessment in this period, especially in regions where the frosts were not lifting until late morning.

The average soil temperatures recorded across the region in 2008-09 were similar to those recorded in 2007-08 (Left figure below). The figure on the right provides the average monthly soil temperatures for the 5 monitor farms in 2008-09.



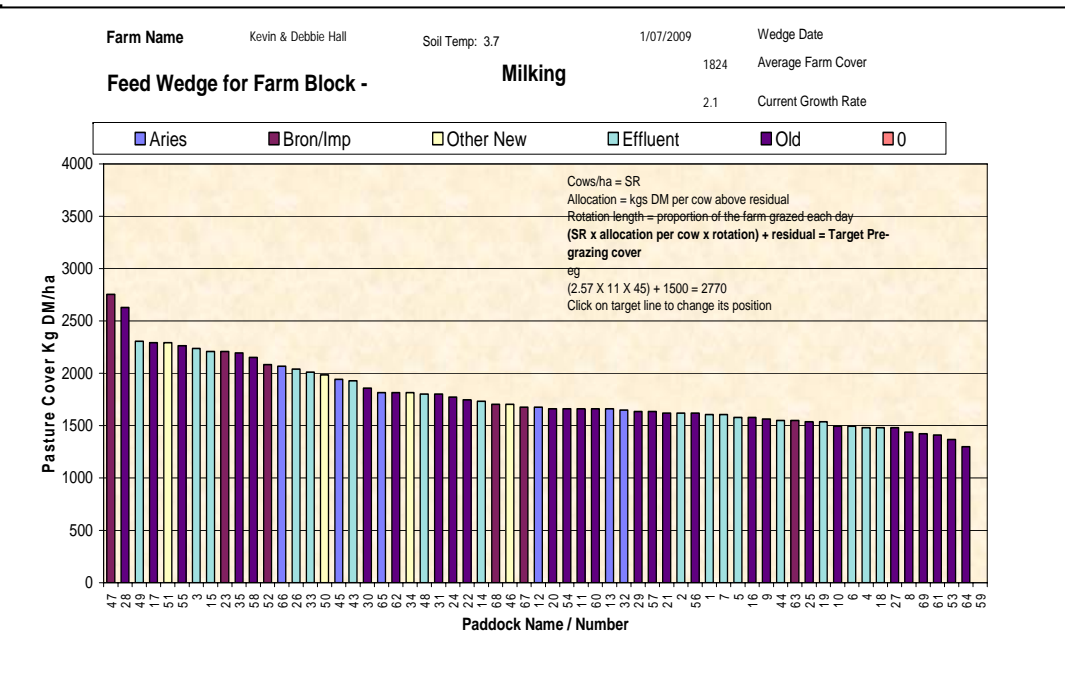
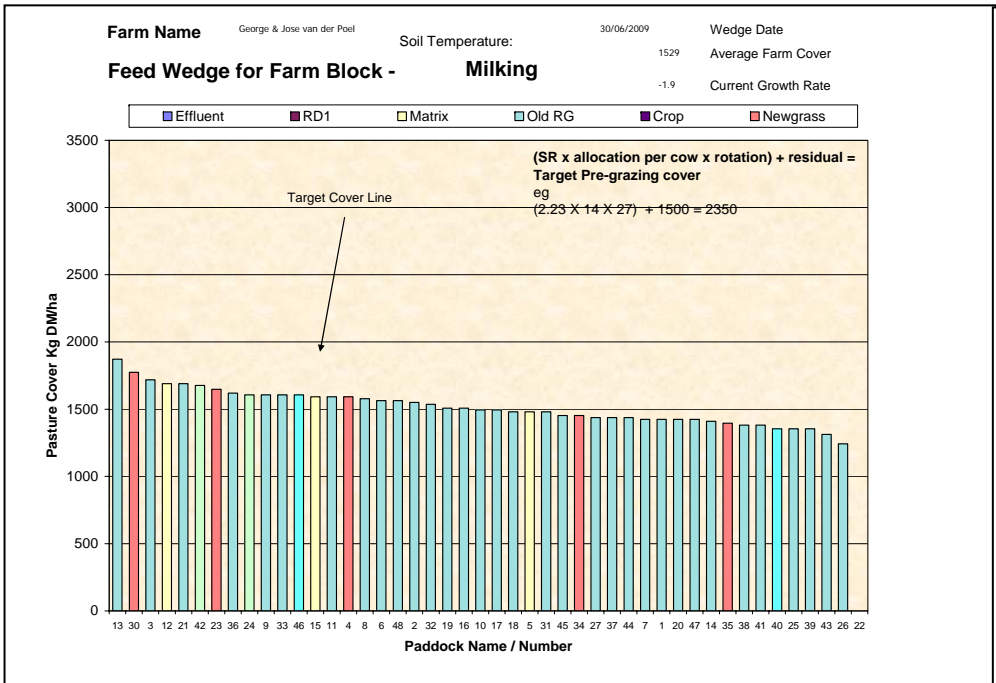
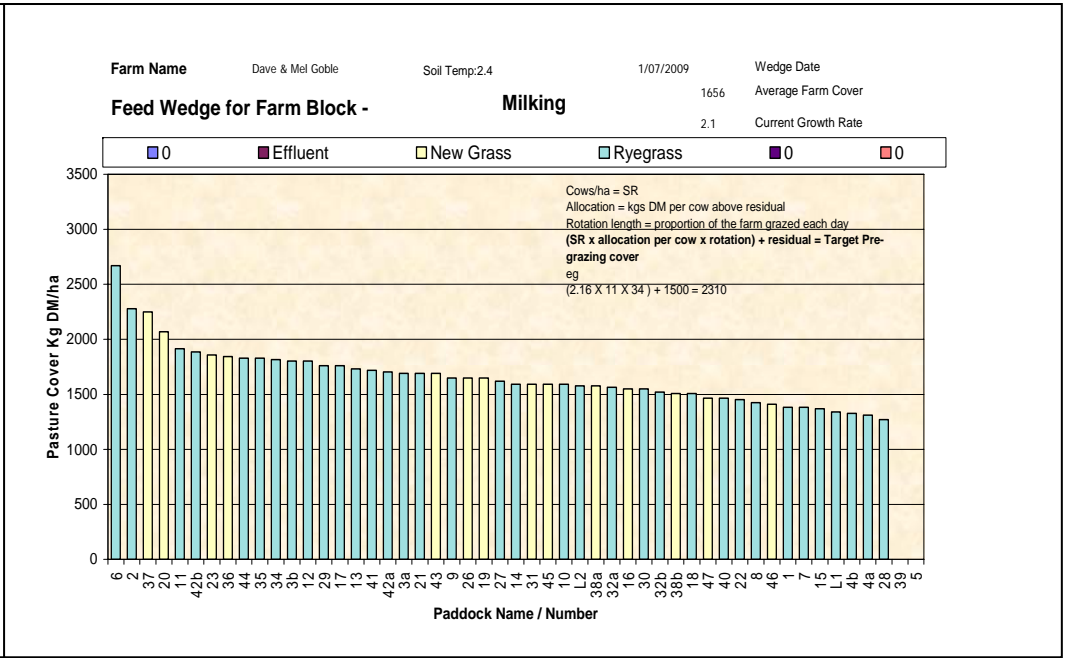
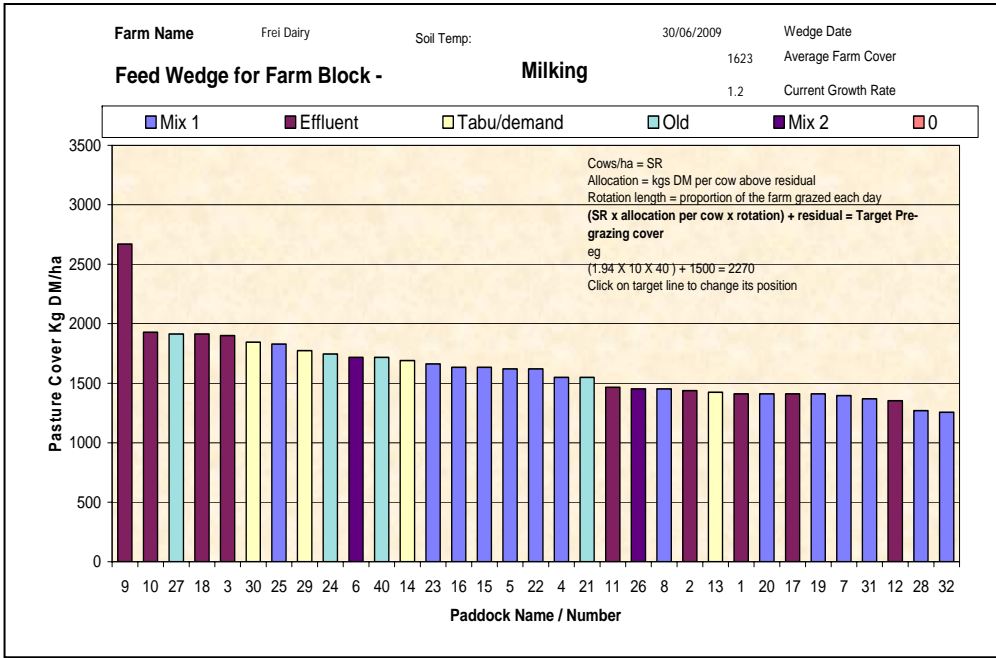
### Weekly Tips

It is time to plan your spring pasture management. Pasture management in the first 2 months after calving has a large impact on production to December. Use the Spring Rotation Planner (SRP) to assist with allocation of your grazing area from calving until balance date. The SRP calculator is available at [www.dairynz.co.nz](http://www.dairynz.co.nz)

### Farm Summary

	Demo Farm	Eastern	Central	Northern	West Otago	Telford
Average cover (kg DM/ha)	1684	1824	1529	1623	1656	2039
Rotation length (days)	-	-	-	-	-	-
Stocking rate	-	-	-	-	-	-
Milksolids kg/cow	-	-	-	-	-	-
Milksolids kg/ha	-	-	-	-	-	-
N (kg/ha)	-	-	-	-	-	-
Supplement (kg/cow/day)	-	-	-	-	-	-
Soil temperature (°C)	5.7	3.7	3.6	2.8	2.4	6.2
Growth Rate (kg DM/day)	6	2	0	1	2	9
Rainfall	69	-	13	7	15	42
Comments						





## Pasture Quality

NOTE: We sample the paddocks immediately in front of the milkers, to height of 3.5cm (7 clicks on the rising plate meter). The RPM data in the table is the pre-grazing clicks recorded on the day of sampling.

### Eastern Southland

Description	Date	RPM	% prot	% Lipid	% SSS	% NDF	% ADF	OMD	MJME/ kg DM	%DM
Pdk 16	25 Jun	13.8	24.3	3.9	15.4	49.8	28.2	80.6	11.8	16.7
Pdk 43	25 Jun	15.8	26.2	4.8	12.1	50.7	27.2	78.2	11.3	15.9
Pdk 43	22 Jul	18.8	24.8	4.4	14.1	52	26	78.6	11.5	16.0
Pdk 16	22 Jul	13.6	26.4	4.7	14.5	48.0	24.7	82.7	11.9	17.7
Pdk 43	5 Aug	13.1	26.1	5.3	15.5	44.0	24.0	80.3	11.5	15.1
Pdk 16	5 Aug	13.6	25.2	4.8	16.9	40.9	25.4	81.3	11.6	15.0
Pdk 16	19 Aug	13.6	24.3	4.3	15.5	42.7	26.1	80.7	11.6	15.5
Pdk 50	19 Aug	16.2	26.9	5.3	15.1	42.4	24.6	82	12	14.2
Pdk 52	2 Sep	16.0	23.3	4.9	16.1	43.1	24.4	80.1	11.6	22.0
Pdk 2	2 Sep	14.0	26.6	5.8	11.4	45.3	24.2	78.2	11.2	19.2
Pdk 1	16 Sep	9.8	26.1	5.9	10.5	47.7	25.8	78	11.3	19.7
Pdk 7	16 Sep	13.4	24.6	5.6	13.2	47.0	24.6	79.3	11.5	19.8
Pdk 47	30 Sep	12.8	33.3	5.2	11.0	45.1	22.3	>85	>12.7	15.8
Pdk 64	30 Sep	15.0	28.8	5.2	14.6	44.8	24.1	84.9	12.5	16.4
Pdk 57	14 Oct	14.0	30.3	6.1	12.5	43.7	24.2	82.0	11.8	18.5
Pdk 30	14 Oct	14.4	33.1	5.7	13.4	41.0	24.0	84.6	12.3	17.5
Pdk 43	28 Oct	17.2	25.6	4.9	15.3	46.4	25.0	82.8	12.1	18.0
Pdk 11	28 Oct	14.2	24.2	4.7	14.5	48.2	24.8	79.7	11.8	18.7
Pdk 46	11 Nov	12.2	29.4	5.0	11.1	43.9	24.3	83.9	12.0	11.9
Pdk 52	11 Nov	12.0	32.1	5.5	11.1	40.7	22.7	84.9	11.8	12.7
Pdk 2	25 Nov	13.6	33.0	5.9	7.7	40.6	26.9	80.6	11.0	13.4
Pdk 11	25 Nov	13.1	29.4	5.0	6.0	45.1	26.1	74.3	10.4	15.8
Pdk 69	9 Dec	14.8	28.1	5.1	12.6	46.0	23.1	82.5	12.0	13.8
Pdk 7	9 Dec	12.3	26.1	4.9	14.9	44.3	23.3	82.0	12.1	14.5
Pdk 7	6 Jan	16.4	23.9	4.4	13.4	46.9	24.4	80.7	12.0	17.3
Pdk 2	6 Jan	17.8	28.1	5.1	12.9	42.5	24.1	82.4	11.8	16.3
Pdk 3	21 Jan	17.5	25.9	4.5	13.8	43.7	24.0	83.2	12.1	11.5
Pdk 12	21 Jan	16.0	22.9	3.7	12.2	50.4	26.3	78.9	11.7	14.7
Pdk 28	3 Feb	17.9	28.5	5.1	14.0	40.9	23.7	83.8	12.0	13.9
Pdk 34	3 Feb	15.7	24.2	4.4	14.8	47.8	26.2	82.0	11.9	16.5
	17 Feb									
	17 Feb									
Pdk 45	3 Mar	18.9	26.1	4.4	<1	52.8	24.8	78.8	10.7	13.0
Pdk 51	3 Mar	15.6	30.8	5.3	9.4	44.4	23.4	83.5	11.7	13.3
Pdk 9	17 Mar	18.4	27.3	5.3	14.4	40.4	23.9	82.4	11.8	12.5
Pdk 50	17 Mar	18.9	26.8	5.1	11.4	44.7	25.0	80.0	11.6	11.9
Pdk 57	31 Mar	17.8	29.5	5.4	10.6	46.4	24.8	83.2	11.9	11.9
Pdk 67	31 Mar	17.2	31.2	5.6	10.3	43.6	22.2	>85	12.2	11.7
Pdk 51	14 Apr	15.8	31.9	4.6	9.1	42.5	21.9	88.2	>12.7	14.3
Pdk 65	14 Apr	15.9	27.8	5.0	12.1	39.6	21.3	83.8	12.2	14.2
Pdk 30	28 Apr	17.7	29.3	5.7	12.8	43.6	21.6	>85	12.4	15.7
Pdk 68	28 Apr	15.7	27.6	5.2	12.9	44.1	24.7	82.7	11.9	15.1
Pdk 56	12 May	15.0	29.5	5.0	11.0	40.7	23.4	83.4	12.1	13.8
Pdk 34	12 May	13.0	29.8	5.7	14.6	34.8	22.2	>85	12.3	13.7
Pdk 23	26 May	10.9	30.3	4.9	11.6	37.6	23.3	>85	12.5	14.7
Pdk 66	26 May	10.7	27.1	4.6	12.5	39.7	23.5	84.3	11.9	13.4
Pdk 66	10 Jun	11.5	22.1	4.3	14.4	45.7	23.7	79.9	11.9	21.7
Pdk 23	10 Jun	10.5	26.8	4.7	13.2	43.9	21.5	84.6	12.5	18.7

## Central Southland

Description	Date	RPM	% prot	% Lipid	% SSS	% NDF	% ADF	OMD	MJME/kg DM	%DM
Pdk 6	25 Jun	12.2	31.2	5.6	11.6	44.9	21.9	>85	12.6	19.9
Pdk 26	25 Jun	9.8	28.6	5.2	14.2	44.1	24.4	81.3	12.0	19.6
Pdk 26	22 Jul	11.4	27.8	5.5	15.2	42.8	23.6	83.1	11.9	18.2
Pdk 6	22 Jul	13.0	27.0	5.3	14.3	45.6	23.4	82.4	12.1	19.9
Pdk 26	5 Aug	18.2	27.9	5.7	15.2	39.8	23.8	81.7	11.6	17.1
Pdk 6	5 Aug	13.6	32.4	5.9	14.4	37.4	22.3	>85	12.6	20.8
Pdk 21	19 Aug	-	28.7	4.6	11.9	41.2	23.1	>85	12.3	19.3
Pdk 9	19 Aug	11.6	30.1	5.1	13.1	41.1	22.1	>85	>12.7	21.8
Pdk 12	2 Sep	15.0	30.3	6.2	12.6	42.1	20.7	84.7	12.5	21.1
Pdk 3	2 Sep	15.5	25.2	6.0	17.5	40.0	21.0	>85	>12.7	21.9
Pdk 18	16 Sep	18.4	29.6	5.4	19.7	45.7	24.5	81.7	11.7	19.3
Pdk 16	16 Sep	18.0	28.1	5.8	13.3	43.4	22.5	84.1	12.2	19.7
Pdk 36	30 Sep	10.3	22.1	4.9	17.1	48.1	23.4	82.9	12.2	21.1
Pdk 26	30 Sep	8.8	28.2	5.6	14.9	44.9	22.2	>85	12.7	19.3
Pdk 19	14 Oct	15.8	20.3	4.4	24.1	37.9	22.1	>85	>12.7	22.5
Pdk 42	14 Oct	15.8	25.3	5.3	19.3	41.0	23.4	>85	>12.7	19.2
Pdk 46	28 Oct	16.8	23.2	5.0	18.4	36.2	23.1	83.2	11.9	18.9
Pdk 26	28 Oct	14.8	28.1	5.9	13.1	36.3	23.5	83.2	11.8	18.7
Pdk 18	11 Nov	15.2	22.5	4.6	16.3	45.6	24.7	80.0	11.9	19.7
Pdk 43	11 Nov	17.2	30.1	5.3	12.6	40.8	22.1	85.8	12.5	16.3
Pdk 33	25 Nov	15.2	28.9	5.1	10.6	45.8	27.9	76.0	10.7	17.0
Pdk 8	25 Nov	16.0	31.4	5.0	7.6	47.5	24.6	81.2	11.3	18.1
Pdk 46	9 Dec	*	24.3	4.5	17.4	44.6	24.1	83.9	12.4	18.2
Pdk 12	9 Dec	18.0	23.1	4.6	15.7	45.4	26.1	78.4	11.5	20.5
Pdk 42	6 Jan	19.9	21.8	4.1	17.9	43.2	24.9	84.4	12.4	18.3
Pdk 21	6 Jan	15.8	24.5	4.2	14.0	43.7	26.8	79.0	11.5	19.8
Pdk 15	21 Jan	14.9	29.9	5.1	13.9	41.0	22.2	>85	12.7	12.8
Pdk 19	21 Jan	11.0	23.9	4.3	15.9	45.2	25.1	81.9	12.1	13.8
Pdk 18	3 Feb	12.9	27.4	4.8	10.7	47.9	24.3	80.2	11.5	18.5
Pdk 30	3 Feb	14.3	28.8	4.7	13.4	42.6	22.7	84.6	12.2	18.1
Pdk 10	17 Feb	14.5	24.2	4.7	15.3	44.1	24.6	82.3	11.9	18.9
Pdk 42	17 Feb	15.3	25.6	4.7	16.9	39.1	23.5	84.9	12.2	19.8
Pdk 1	3 Mar	13.8	25.3	4.8	14.6	44.5	25.5	81.2	11.6	16.6
Pdk 5	3 Mar	14.6	28.8	5.7	14.6	40.8	22.7	>85	12.1	15.8
Pdk 4	17 Mar	13.1	29.2	5.2	16.1	40.9	23.1	85.2	12.5	16.3
Pdk 10	17 Mar	16.7	25.5	5.2	16.1	43.1	24.1	81.8	11.9	17.5
Pdk 6	31 Mar	13.2	29.0	5.4	12.7	43.5	23.5	84.9	12.1	16.2
Pdk 16	31 Mar	16.2	31.1	5.6	11.2	42.2	22.5	>85	12.0	14.0
Pdk 11	14 Apr	11.7	28.5	4.9	12.8	40.7	23.0	86.3	12.5	17.9
Pdk 43	14 Apr	14.8	28.3	5.1	14.6	40.1	21.1	90.6	>12.7	15.9
Pdk 5	28 Apr	11.6	27.0	5.6	16.6	40.2	22.0	>85	12.6	19.2
Pdk 38	28 Apr	12.7	26.9	5.3	15.8	43.8	22.9	>85	12.4	18.2
Pdk 2	26 May	7.4	26.2	4.6	12.2	41.8	25.1	80.5	11.4	18.8
Pdk 31	26 May	7.0	28.7	4.5	10.9	40.4	23.8	84.2	12.0	16.7
Pdk 2	10 Jun	7.3	24.1	4.5	12.5	49.1	24.2	77.9	11.8	25.3
Pdk 30	10 Jun	8.8	23.4	4.4	15.8	42.1	24.3	77.4	11.6	23.1



## Northern Southland

Description	Date	RPM	% prot	% Lipid	% SSS	% NDF	% ADF	OMD	MJME/kg DM	%DM
Pdk 18	2 Jul	9.4	25.8	4.9	15.7	44.0	22.8	84.3	12.3	18.4
Pdk 9	2 Jul	10.4	26.5	4.5	16.6	40.2	23.2	>85	12.4	15.0
Pdk 9	23 Jul	10.8	28.6	4.7	10.6	49.2	24.5	80.0	11.7	13.9
Pdk 18	23 Jul	9.4	23.7	4.5	16.6	46.5	25.1	81.2	11.7	15.0
Pdk 9	5 Aug	11.8	27.2	5.2	18.2	39.7	22.8	84.4	12.3	18.8
Pdk 18	20 Aug	9.4	23.6	4.7	17.6	42.9	23.1	85	12.6	24.8
Pdk 14	20 Aug	10	26.3	5.6	20.5	33.1	21.1	>85	>12.7	21.7
Pdk 4	3 Sep	12.8	30.0	5.7	8.9	49.1	22.5	78.7	11.7	19.5
Pdk 32	3 Sep	9.2	23.7	4.8	16.7	41.4	22.4	84.3	12.2	18.5
Pdk 12	17 Sep	9.2	33.8	5.9	12.0	36.6	22.4	>85	12.3	14.2*
Pdk 8	17 Sep	11.0	29.8	5.5	13.2	40.4	22.6	84.7	12.1	14.6*
Pdk 25	1 Oct	11.0	25.3	5.2	15.6	42.8	24.4	82.8	12.1	19.0
Pdk 18	15 Oct	11.6	24.8	5.0	19.7	42.8	22.4	>85	>12.7	20.0
Pdk 8	15 Oct	13.4	31.1	5.2	15.5	37.7	22.5	>85	>12.7	16.5
Pdk 21	29 Oct	13.2	32.2	5.8	11.9	37.9	24.0	82.9	11.8	16.0
Pdk 17	29 Oct	13.8	28.1	4.8	14.9	35.8	24.4	82.8	11.8	15.9
Pdk 9	12 Nov	13.6	28.9	3.9	13.3	39.9	24.2	84.8	12.4	17.9
Pdk 6	12 Nov	15.2	28.1	5.0	13.1	39.5	25.2	83.2	12.0	17.8
Pdk 26	26 Nov	12.6	31.6	4.5	12.2	38.1	24.1	83.9	12.0	15.9
Pdk 2	26 Nov	14.4	26.6	4.7	14.2	41.8	25.5	78.6	11.3	17.3
Pdk 5	10 Dec	15.2	19.3	3.9	16.4	47.5	27.4	73.5	10.5	17.8
Pdk 29	10 Dec	24.6	13.9	3.7	13.4	59.1	32.7	65.7	10.0	21.1
Pdk 32	7 Jan	12.6	20.0	3.7	13.0	48.8	28.6	71.9	10.5	22.7
Pdk 25	7 Jan	11.8	22.6	4.0	12.4	47.9	26.4	74.0	10.8	22.9
Pdk 27	21 Jan	13.8	24.8	3.9	13.6	44.4	25.8	79.2	11.4	18.1
Pdk 18	21 Jan	15.2	21.1	3.5	17.2	45.8	27.2	78.7	11.2	20.8
Pdk 31	4 Feb	11.1	23.1	4.2	15.6	45.0	28.0	74.1	10.5	29.8
Pdk 30	4 Feb	12.2	26.6	4.3	11.0	45.0	26.5	79.2	11.2	14.1
Pdk 4	18 Feb	8.6	18.1	3.7	12.3	51.1	29.8	66.9	9.8	30.2
Pdk 8	18 Feb	9.4	19.5	3.9	15.5	49.4	27.2	76.2	11.1	25.9
Pdk 11	4 Mar	9.2	24.5	4.3	18.6	51.1	24.4	83.5	12.6	18.8
Pdk 15	4 Mar	9.9	23.8	11.1	18.1	47.0	26.4	79.9	11.8	21.9
Pdk 6	18 Mar	10.5	24.9	5.1	12.5	45.8	25.8	78.3	11.0	13.5
Pdk 40	18 Mar	11.6	27.6	5.2	11.4	36.2	23.8	82.4	11.5	12.2
Pdk 22	1 Apr	12.2	27.7	4.3	11.5	44.6	23.6	>85	12.5	15.7
Pdk 17	1 Apr	11.1	25.1	4.6	15.2	44.8	23.7	84	12.3	17.2
Pdk 40	15 Apr	9.3	29.8	4.6	10.3	42.2	23.5	84.2	11.8	12.8
Pdk 50	15 Apr	15.0	28.2	4.7	12.4	44.1	24.3	83.9	11.9	13.1
Pdk 22	29 Apr	10.7	25.1	5.0	14.6	42.0	24.0	82.6	12.0	17.6
Pdk 28	29 Apr	8.5	24.8	4.5	14.0	45.1	24.4	81.8	12.0	17.9
Pdk 9	27 May	16.8	24.9	4.9	19.2	43.9	23.3	84.7	12.1	15.3
Pdk 30	27 May	9.6	25.3	5.1	20.5	39.6	24.0	84.3	12.3	16.2
Pdk 9	11 Jun	17.4	22.3	4.0	14.6	45.8	24.2	78.7	11.7	18.7
Pdk 30	11 Jun	10.2	24.8	4.5	13.8	46.4	23.7	80.0	12.1	19.3

- \* Pasture sample collected in wet conditions