

Southland Monitor Farm Project

Weekly Update – 4 June 08

General Comments

Soil temperatures have risen slightly on last week but remain below 8 °C on all farms. The growth rate for the monitor farms ranged between 7 and 12 kg DM/ha/day. As we are now in a new season the pasture growth rate and soil temperature graphs have been revised with current data being compared to the average for the 2007-08 season.

Farm walks will not be occurring as regularly over the next 8 weeks. The proposed schedule is

24 June, 22 July and 8 August.

The demonstration farm will have an additional measurement on 9th July.

Paddock growth data has been collated for each of the monitor farms to identify the best and poorest performing paddocks on the farm. This data is presented in the Table below. There is a lot of additional information that requires considering when interpreting this data eg N fertiliser use, grazing policies, supplementary feed input etc however it does demonstrate that there is considerable range in pasture grown between farms and regions and also within a farm. The poorest performing paddock on all farms grew just over half the DM that was grown on the best performing paddock. There will be a number of reasons for this, which we will report once the farmers have had time to reflect on the results. The 10 poorest performing paddocks on each farm will be soil tested in the next 3 weeks to investigate if soil nutrient status is one of the factors contributing to the lower pasture production.

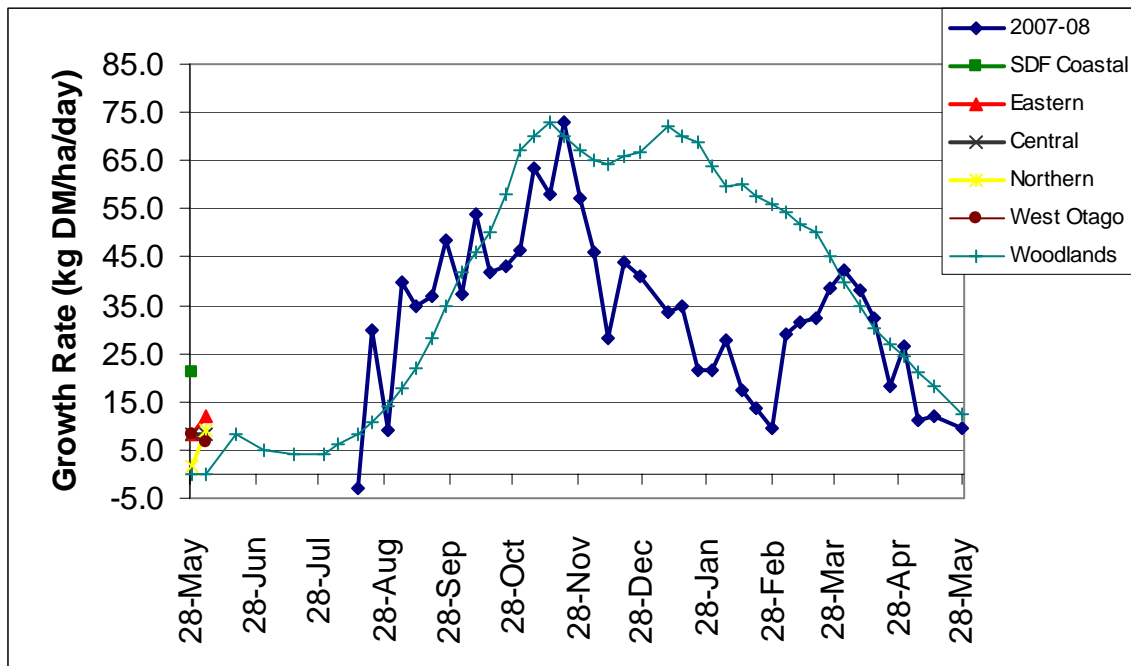
	Eastern	Central	Northern	West Otago
Monitoring period	11 Sep 07 – 28 May 08	11 Sep 07 – 28 May 08	17 Oct 07 – 28 May 08	12 Sep 07 – 28 May 08
Average growth (kg DM/ha/annum)	9352	7552	3751	8521
Best paddock (kg DM/ha/annum)	12118	9146	4892	10546
Poorest paddock (kg DM/ha/annum)	6115	5549	2378	5619
Poorest as proportion of best paddock	0.54	0.61	0.52	0.54
Comments			Monitoring started later	

Farm Summary

	Demo Farm	Eastern	Central	Northern	West Otago
Average cover (kg DM/ha)	-	1776	1476	1488	1650
Rotation length (days)	-	-	-	-	-
Percentage in milk	0	0	0	0	0
N (kg/ha)	0	0	0	0	0
Soil temperature (°C)	-	7.2	7.8	6.2	5.9
Growth Rate (kg DM/day)	-	11.9	8.3	9.1	6.7
Rainfall	-	20	15	12.5	13

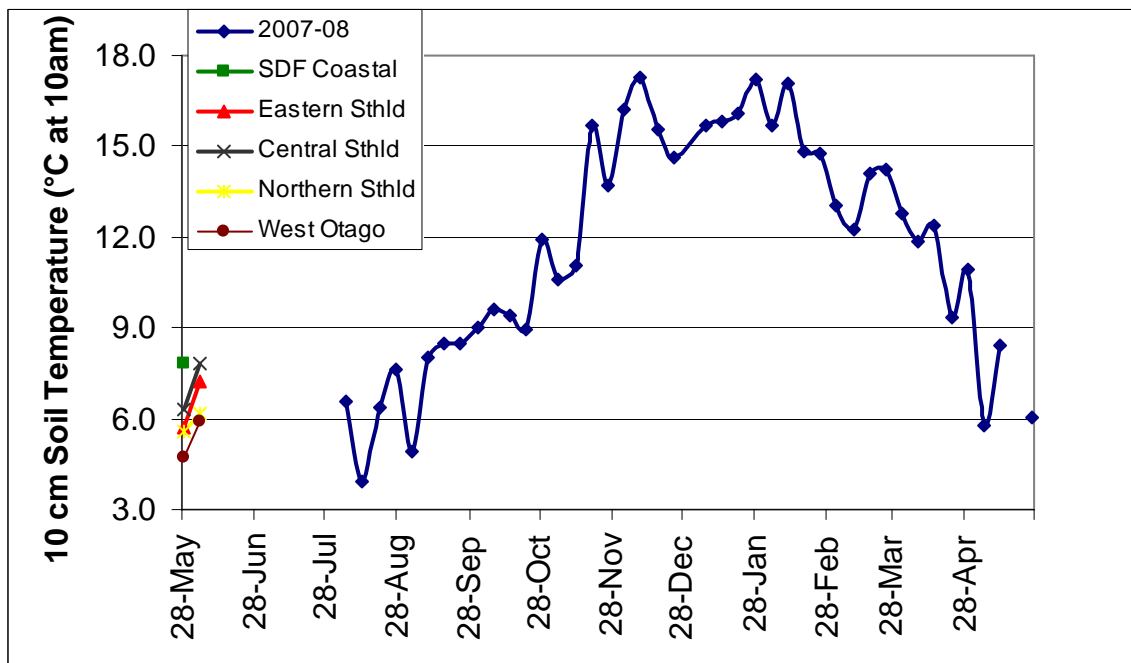
The demonstration farm was not walked this week

Pasture Growth Rates



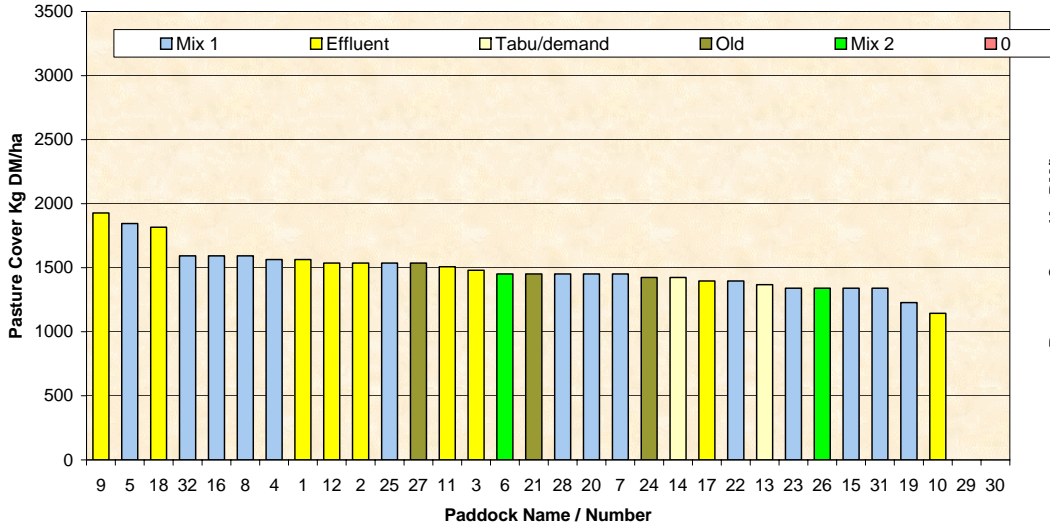
NB the Woodlands data is the long-term average from mature pastures at Woodlands measured using enclosure cages.

Soil Temperature



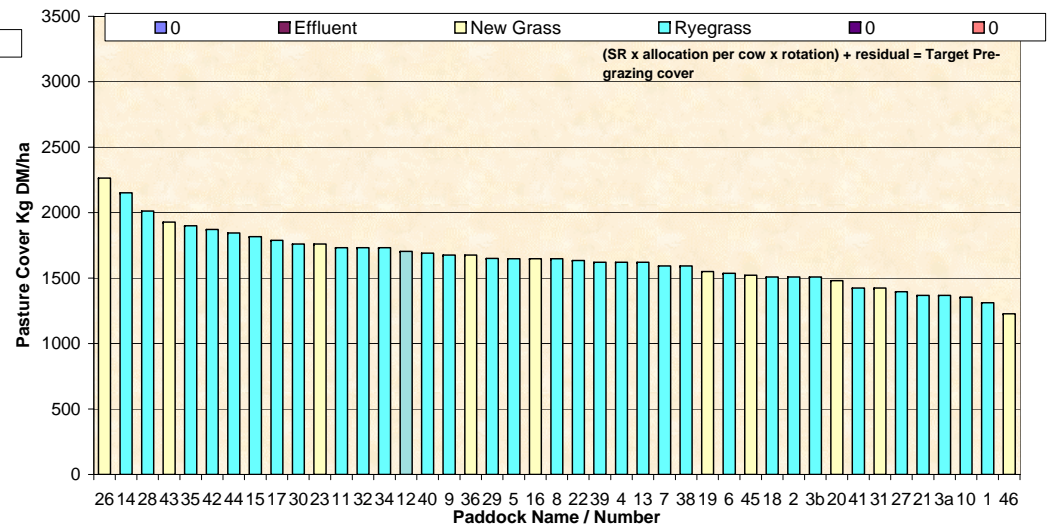
Farm Name: Frei Dairy
 Soil Temp: 6.2
 Wedge Date: 04/06/2008
 Average Farm Cover: 1488
 Current Growth Rate: 9.1

Feed Wedge for Farm Block - Milking



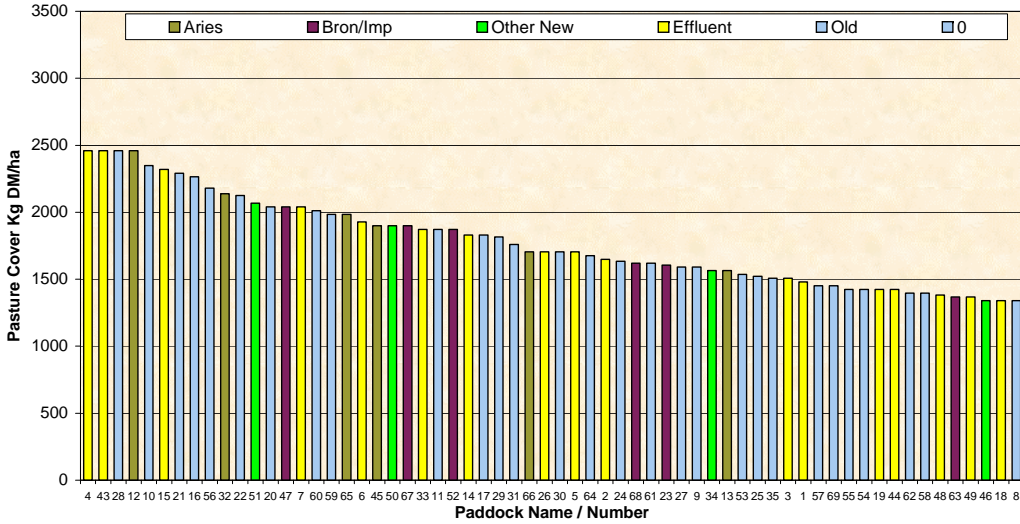
Farm Name: Dave & Mel Goble
 Soil Temp: 5.9
 Wedge Date: 04/06/2008
 Average Farm Cover: 1650
 Current Growth Rate: 6.7

Feed Wedge for Farm Block - Milking



Farm Name: Kevin & Debbie Hall
 Soil Temp: 7.2
 Wedge Date: 03/06/2008
 Average Farm Cover: 1776
 Current Growth Rate: 11.9

Feed Wedge for Farm Block - Milking



Farm Name: George & Jose van der Poel
 Soil Temp: 7.8
 Wedge Date: 03/06/2008
 Average Farm Cover: 1476
 Current Growth Rate: 8.3

Feed Wedge for Farm Block - Milking

