

Southland Monitor Farm Project

Weekly Update – 10 June 09

General Comments

Soil temperature has continued to decline this week except in North Otago and Northern Southland where they rose slightly. Pasture growth has continued to decline with 2 regions recording zero growth rates in the last 2 weeks.

Pasture analysis results from the 27th May show that in general quality is down slightly on the end of April when the last samples were collected. Crude protein levels were similar to the last sampling however the soluble sugars (water soluble carbohydrate) concentrations were significantly higher in the May samples than in the April samples. Neutral detergent fibre levels are from 36 to 46 %.

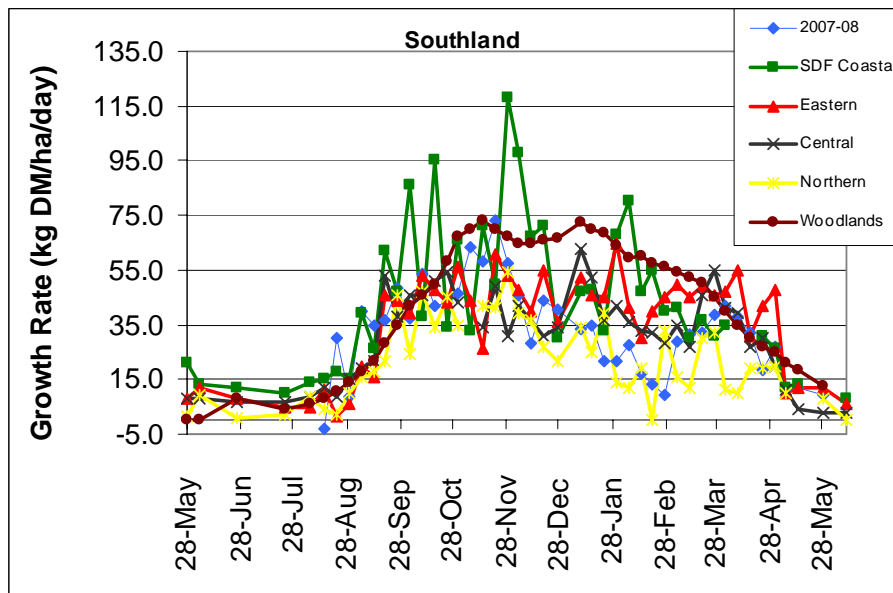
Weekly Tips

This is the time to orientate new staff within the farm business. In the first few weeks it is important that new staff have clarity on their roles and other team members. Take the time now with the rest of the team to go over farm policies, targets and update OSH manuals. Ensure calf rearing facilities are up to date and any repairs and maintenance is programmed in for this next week.

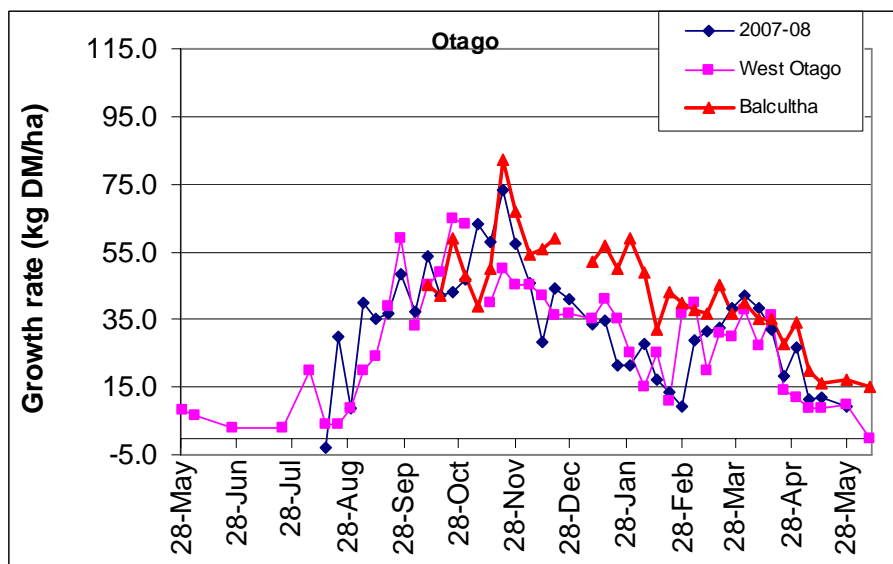
Farm Summary

	Demo Farm	Eastern	Central	Northern	West Otago	Telford
Average cover (kg DM/ha)	1673	1775	1511	1598	1624	1894
Rotation length (days)	-	-	-	-	-	-
Stocking rate	-	-	-	-	-	-
Milksolids kg/cow	-	-	-	-	-	-
Milksolids kg/ha	-	-	-	-	-	-
N (kg/ha)	-	-	-	-	-	-
Supplement (kg/cow/day)	-	-	-	-	-	-
Soil temperature (°C)	6.5	5.3		5.9	6.4	6.5
Growth Rate (kg DM/day)	8	6	3	0	0	15
Rainfall	43	27	-	14	24	16
Comments						

Pasture Growth Rates



NB the Woodlands data is the long-term average from mature pastures at Woodlands measured using enclosure cages.



Soil Temperature

