

Southland Monitor Farm Project

Weekly Update – 28 May 08

General Comments

Soil temperatures have dropped further in all regions this week and are now below 7 C on all farms. The growth rate for the monitor farms is the average over the last 14 days as the farms were not walked last week.

All farms are now dried off. Two farms are wintering cows on crop on the farm, one has moved all the cows to grazing and the forth is wintering on the farm in a tunnel house.

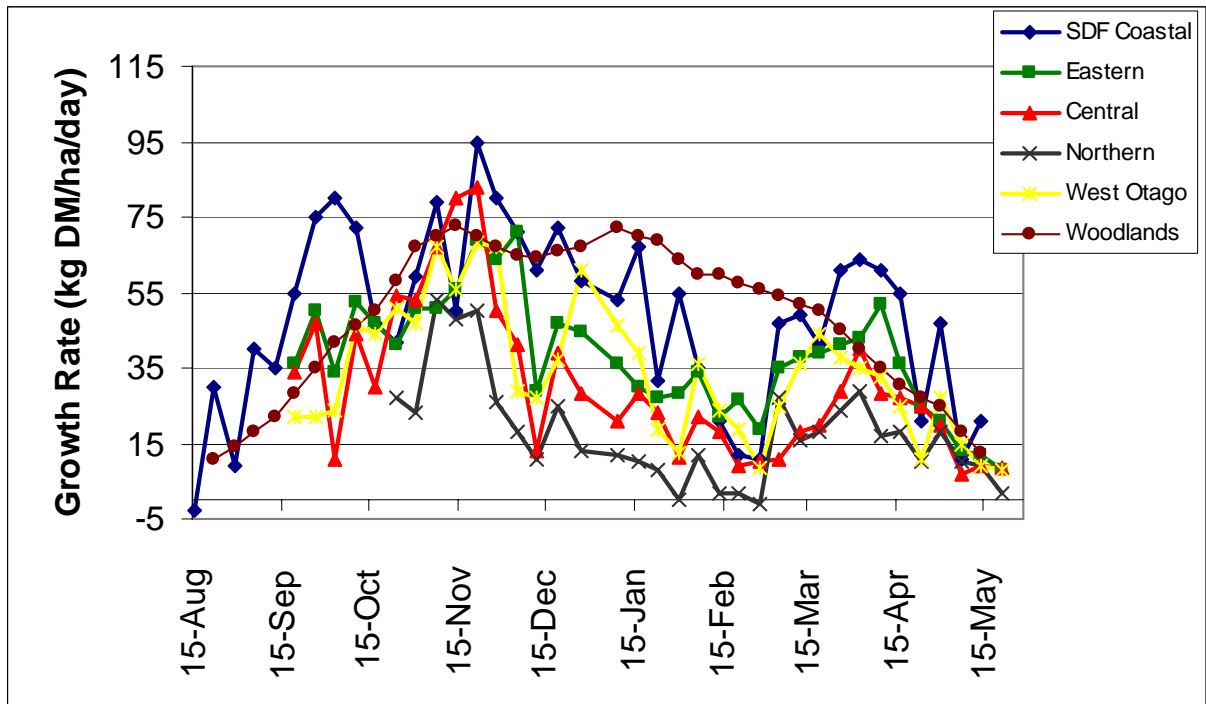
Pasture quality results from the 14 May show that crude protein concentrations are still in the mid to high 20's and ME between 11 and 12 MJ ME/kg DM. NDF levels have continued to decline and soluble sugar levels have risen.

Farm Summary

	Demo Farm	Eastern	Central	Northern	West Otago
Average cover (kg DM/ha)		1695	1417	1425	1611
Rotation length (days)		-	-	-	-
Percentage in milk	0	0	0	0	0
N (kg/ha)	172	127	143	19	133
Soil temperature (°C)		5.7	6.3	5.6	4.7
Growth Rate (kg DM/day)*		8.2	8.3	1.7	8.1
Rainfall*		37	46	36	40

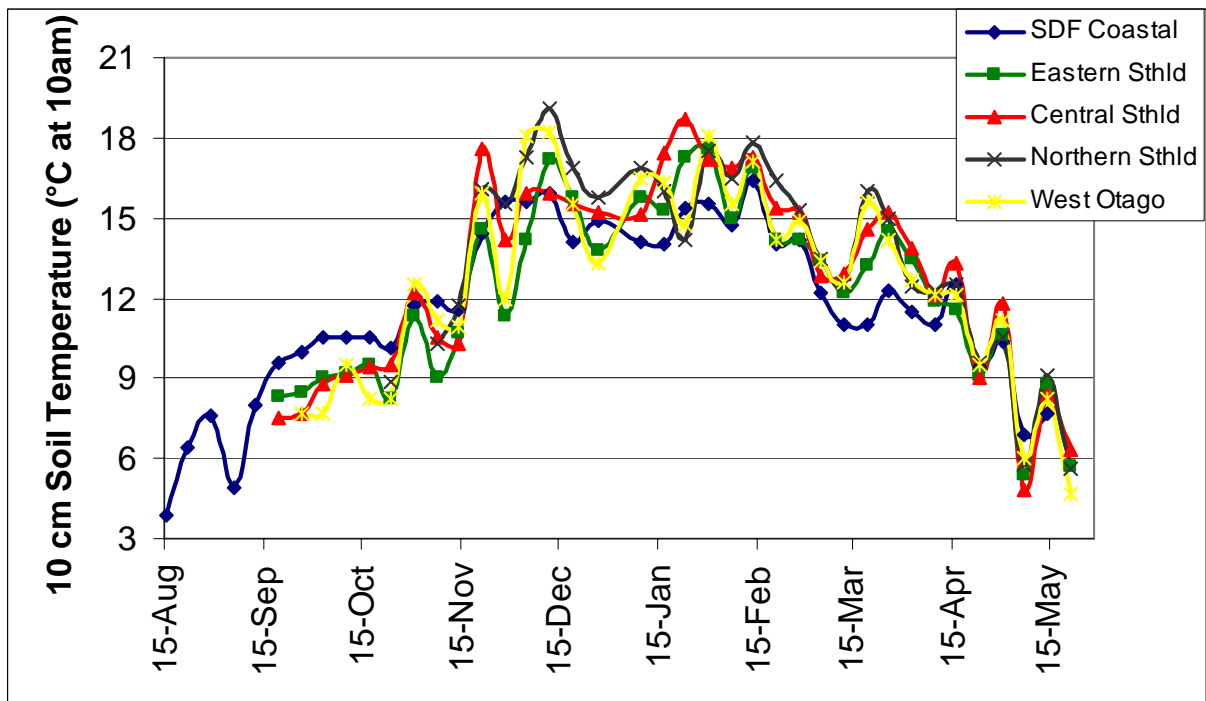
* Growth rate and rainfall for the last 14 days.

Pasture Growth Rates



NB the Woodlands data is the long-term average from mature pastures at Woodlands measured using enclosure cages.

Soil Temperature



Southland Monitor Farm Project

Weekly Update – 14 May 08

General Comments

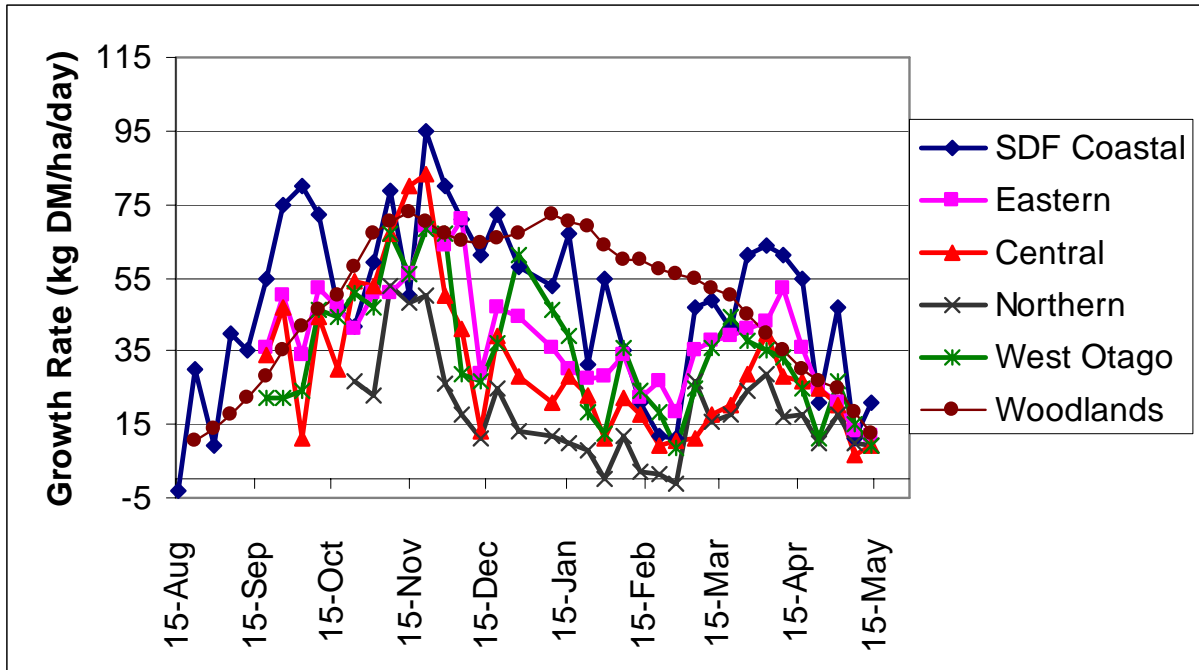
Soil temperatures rose again this week but all regions remain below 10 C. Growth is again low with most regions below 15 kg DM/ha/day. The Demonstration farm with its higher average pasture cover grew 21 kg DM/ha/day. Average pasture cover has continued to decline on all farms.

Milk production has dropped on all the farms again this week, except the demonstration farm where production increased following the drying off of the light cows previously on OAD. The Eastern farm is now milking OAD and the Northern and West Otago farms dried all the cows off on 14 May. The Central farm plans to dry off early next week. This farm introduced the cows to kale at 2 kg/cow/week last week as part of the transition phase to wintering on crop and cereal silage. The Northern farm applied Eco-N to 50% of the farm this week and the Central farm completed their last round of urea. The demonstration farm has applied Eco-N to all the paddocks.

Farm Summary

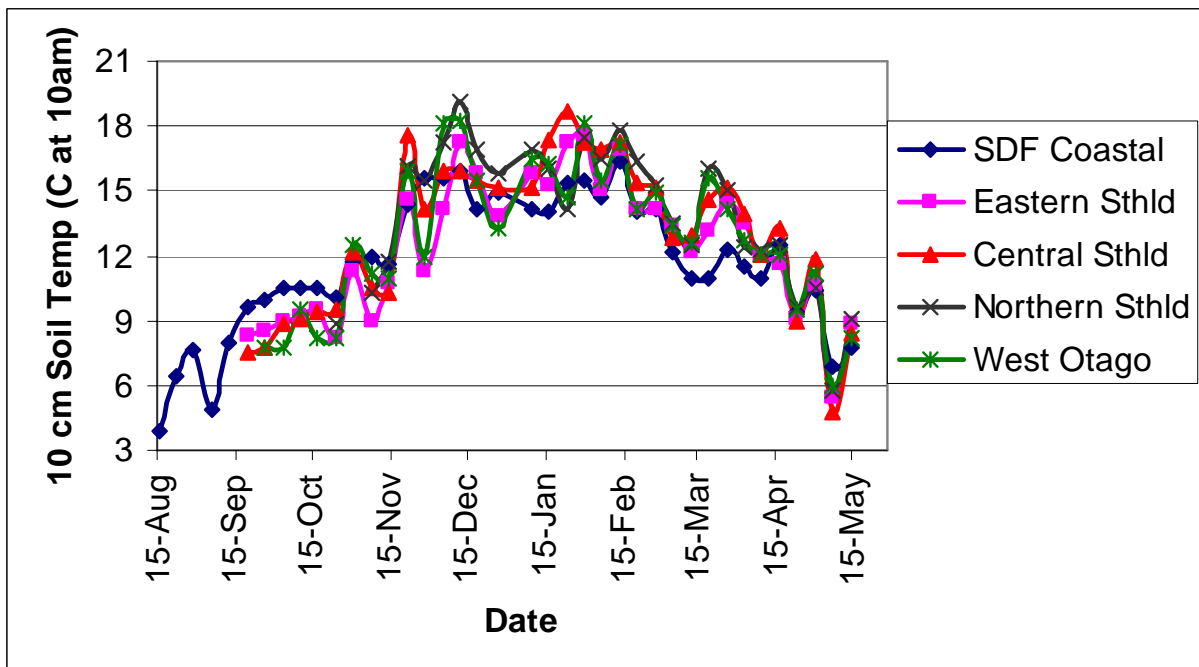
	Demo Farm	Eastern	Central	Northern	West Otago
Average cover (kg DM/ha)	2160	1762	1368	1449	1531
Rotation length (days)	42	54	30	49	30
Supplement (kg DM/cow)	0	2.4	7.9	0	4
Production (kg MS/cow)	1.25	1.21	1.14	1.0	-
Production (kg MS/ha)	2.36	3.23	2.95	2.0	-
Percentage in milk	60	75	90	86	-
Stocking rate (milkers/ha)	1.56	2.66	2.6	2.0	2.67
N (kg/ha)	172	127	143	19	133
Soil temperature (°C)	7.7	8.8	8.4	9.1	8.2
Growth Rate (kg DM/day)*	21	12	9	9	8
Comments	2/3 rd TAD 1/3 rd dried off	OAD	OAD 2 kg kale	Dried off 14 May	Dried off 14 May

Pasture Growth Rates



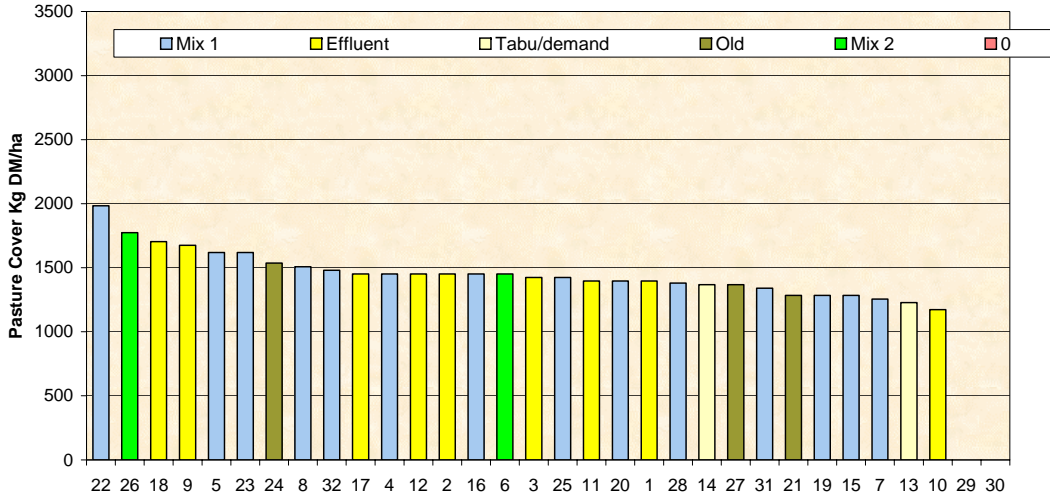
NB the Woodlands data is the long-term average from mature pastures at Woodlands measured using enclosure cages.

Soil Temperature



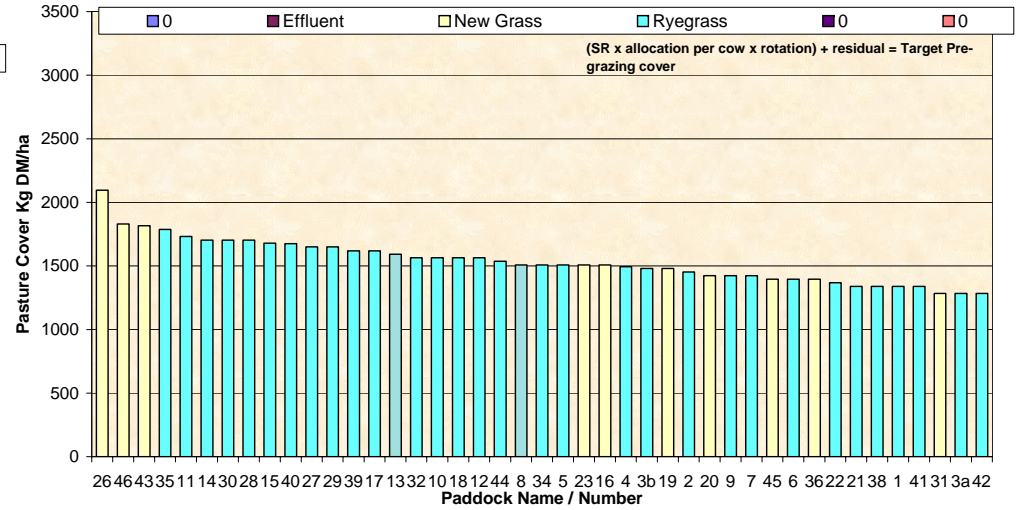
Farm Name: Frei Dairy
 Soil Temp: 9.1
 14/05/2008
 Wedge Date: 1449
 Average Farm Cover: 9.1
 Current Growth Rate

Feed Wedge for Farm Block - Milking



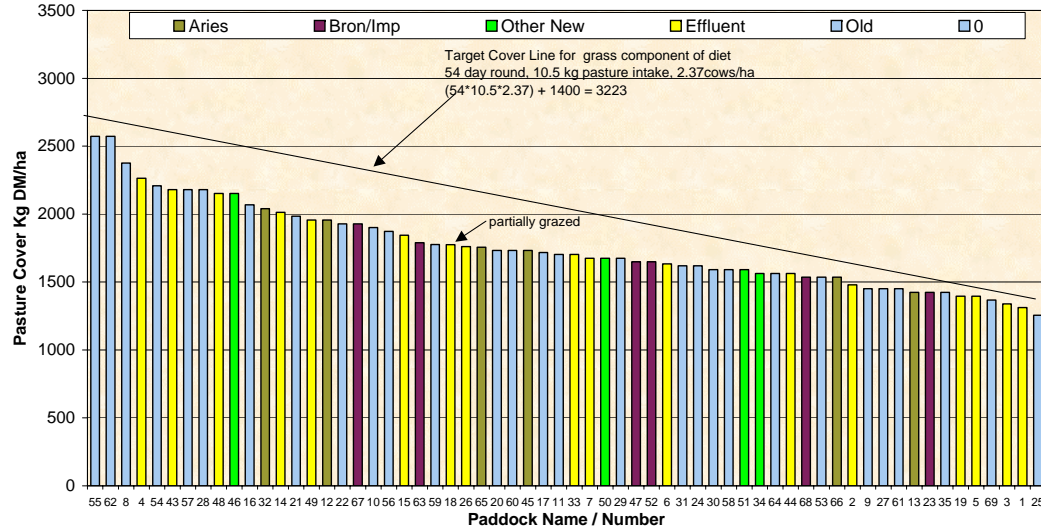
Farm Name: Dave & Mel Goble
 Soil Temp: 8.2
 14/05/2008
 Wedge Date: 1531
 Average Farm Cover: 14.4
 Current Growth Rate

Feed Wedge for Farm Block - Milking



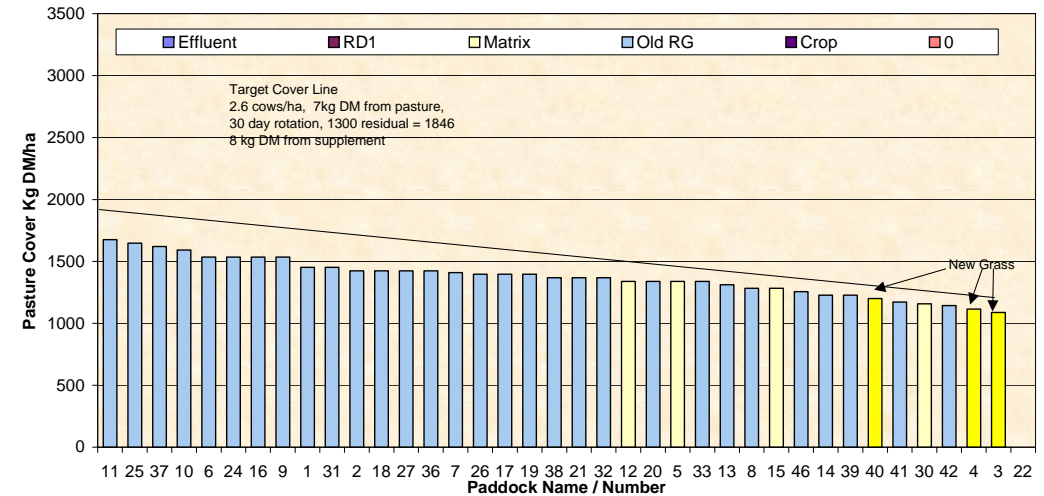
Farm Name: Kevin & Debbie Hall
 Soil Temp: 8.6
 13/05/2008
 Wedge Date: 1762
 Average Farm Cover: 11.7
 Current Growth Rate

Feed Wedge for Farm Block - Milking



Farm Name: George & Jose van der Poel
 Soil Temp: 8.4
 13/05/2008
 Wedge Date: 1368
 Average Farm Cover: 9.3
 Current Growth Rate

Feed Wedge for Farm Block - Milking



Pasture Quality

NOTE: We sample the paddocks immediately in front of the milkers, to height of 3.5cm (7 clicks on the rising plate meter). The RPM data in the table is the pre-grazing clicks recorded on the day of sampling.

Eastern Southland

Description	Date	RPM	% prot	% Lipid	% SSS	% NDF	% ADF	OMD	MJME/ kg DM	%DM
Pdk 33	2 Oct	18.2	27.6	5.6	12.8	40.8	23.4	82.9	12.1	15.7
Pdk 34	16Oct	16.8	22.4	4.4	16.9	41.3	25.0	81.6	11.8	18.0
Pdk 55	16Oct	12.8	26.5	4.5	11.7	46.2	26.2	81.1	11.6	15.4
Pdk 25	30 Oct	14.6	26.0	4.1	15.0	43.2	24.0	>85	12.7	19.5
Pdk 29	30 Oct	11.6	23.3	4.3	16.4	40.4	22.2	>85	12.5	17.3
Pdk 33	13Nov	12.8	28.5	4.4	16.4	42.6	22.9	>85	12.6	16.7
Pdk 69	13Nov	14.6	23.6	3.7	15.1	45.2	24.7	82.5	12.2	17.1
Pdk 47	27Nov	16.2	22.6	3.8	15.8	47.1	25.3	84.7	12.4	14.1
Pdk 26	27Nov	18.0	20.1	3.4	14.3	50.6	26.5	80.2	11.8	15.7
Pdk 33	11Dec	17.6	24.9	4.4	14.4	45.8	24.6	80.7	11.8	13.2
Pdk 12	11Dec	13.6	23.9	4.3	14.8	44.3	26.2	78.3	11.4	14.6
Pdk 46	8 Jan	13.0	33.6	5.7	7.1	34.5	25.0	79.7	10.7	14.0
Pdk 53	8 Jan	16.6	24.3	3.9	9.4	51.4	27.2	77.7	11.0	16.6
Pdk 64	22 Jan	15.8	29.5	4.6	8.9	45.7	25.7	79.3	10.9	12.8
Pdk 34	22 Jan	12.6	29.5	5.5	8.1	45.6	27.4	76.4	10.5	13.5
Pdk 60	6 Feb	13.2	23.7	4.1	10.3	52.6	24.9	75.6	11.4	22.3
Pdk 44	6 Feb	13.4	26.7	5.1	14.8	43.9	23.1	81.1	11.9	20.6
Pdk 47	20 Feb	11.0	28.6	5.1	12.1	44.8	24.4	79.4	11.4	19.8
Pdk 30	20Feb	12.2	28.1	4.6	10.4	49.9	26.3	75.5	10.8	22.3
Pdk 65	4 Mar	12.6	28.6	4.7	13.3	47.0	23.9	82.3	12.0	18.3
Pdk 57	4 Mar	12.4	31.9	4.6	10.2	51.2	22.1	84.3	12.3	16.8
Pdk 69	17Mar	13.6	27.9	4.7	9.8	49.2	25.3	81.1	11.6	14.1
Pdk 55	1 Apr	11.2	31.3	4.6	6.1	54.3	26.7	80.0	11.4	12.4
Pdk 68	1 Apr	18.0	31.6	5.0	12.3	40.8	25.5	>85	12.2	10.6
Pdk 51	15Apr	21.3	25.8	4.1	14.3	43.2	25.7	81.0	11.7	15.5
Pdk 65	15Apr	19.4	30.8	4.6	13.8	36.6	23.4	85.0	12.2	13.7
Pdk 24	30Apr	20.0	29.6	4.6	11.0	49.8	25.3	82.2	11.9	13.2
Pdk 27	30Apr	18.8	28.1	4.4	11.9	48.9	24.9	80.5	11.6	13.2

Central Southland

Description	Date	RPM	% prot	% Lipid	% SSS	% NDF	% ADF	OMD	MJME/kg DM	%DM
Pdk 42	2 Oct	13.0	21.6	4.9	10.3	39.6	24.6	>85	12.3	12.5
Pdk 18	16Oct	11.1	26.3	5.1	13.9	40.7	23.3	82.5	12.0	15.5
Pdk 39	16Oct	14.4	28.2	5.4	11.6	40.4	24.3	84.0	11.8	13.5
Pdk 20	30Oct	16.4	21.5	4.0	17.5	42.8	22.0	>85	>12.7	20.0
Pdk 4	30Oct	16.8	24.4	4.8	14.7	42.2	22.9	81.6	12.0	18.3
Pdk 12	13Nov	17.4	24.7	4.3	16.3	44.8	22.6	>85	>12.7	17.3
Pdk 6	13Nov	19.4	23.1	4.3	18.5	39.5	23.7	>85	12.5	18.9
Pdk 26	27Nov	15.8	17.8	2.9	16.2	49.6	29.8	75.4	11.2	18.3
Pdk 13	27Nov	16.4	23.1	3.8	16.9	43.8	25.4	81.5	11.9	19.6
Pdk 40	11Dec	14.2	17.8	3.3	16.6	53.3	31.5	70.3	10.6	21.1
Pdk 15	11Dec	15.3	24.4	4.7	13.5	50.6	25.3	79	11.8	17.1
Pdk 12	8 Jan	12.2	34.8	6.2	6.1	39.0	23.9	82.1	11.1	17.3
Pdk 16	8 Jan	9.1	32.7	5.8	9.7	37.0	23.3	83.7	11.5	16.6
Pdk 5	22Jan	11.8	29.9	5.3	9.0	46.5	25.8	77.1	10.9	17.8
Pdk 42	22Jan	10.8	32.5	4.7	14.4	43.0	23.4	>85	12.2	17.3
Pdk 15	6 Feb	10.8	33.4	5.9	13.8	36.9	21.2	>85	>12.7	19.7
Pdk 33	6 Feb	10.6	27.9	5.2	14.7	39.8	22.2	82.1	12.0	21.3
Pdk 9	20Feb	9.4	27.0	4.8	12.0	47.0	24.1	80.3	11.7	20.7
Pdk 21	20Feb	9.0	34.0	5.7	11.8	37.9	24.2	81.7	11.6	22.2
Pdk 2	4 Mar	11.8	28.4	5.2	9.6	51.8	25.0	76.2	11.2	20.7
Pdk 27	17Mar	10.4	34.1	4.8	7.3	48.2	21.9	>85	>12.7	15.8
Pdk 18	1 Apr	12.2	31.7	6.0	10.3	39.5	22.5	82.3	11.9	14.6
Pdk 31	1 Apr	10.4	32.6	6.8	13.2	37.6	21.2	>85	>12.7	16.6
Pdk 13	15Apr	14.0	32.9	6.0	12.0	38.5	20.9	85.8	12.5	16.8
Pdk 41	15Apr	11.6	30.6	5.4	15.0	36.9	21.6	89.0	13.1	15.3
Pdk 9	30Apr	12.4	29.8	5.1	12.7	45.0	21.7	83.8	12.3	17.3
Pdk 27	30Apr	11.4	30.9	4.9	12.3	45.1	23.1	>85	12.6	18.1

West Otago

Description	Date	RPM	% prot	% Lipid	% SSS	% NDF	% ADF	OMD	MJME/kg DM	%DM
Pdk 45	3 Oct	10.4	34.1	5.9	9.9	36.6	22.7	>85	12.4	14.2
Pdk 19	17Oct	13.6	28.1	4.8	11.8	41.7	24.1	>85	12.3	12.4
Pdk 29	17Oct	14.8	29.3	4.7	9.6	46.1	25.1	83.7	11.9	13.0
Pdk 21	31Oct	13.8	25.9	4.7	15.1	43.4	25.4	83.9	12.0	18.1
Pdk 35	31Oct	12.8	28.3	5.1	15.2	41.1	22.9	>85	12.4	17.9
Pdk 6	14Nov	22.4	20.6	4.1	16.9	44.8	24.6	81.0	11.9	15.6
Pdk 40	14Nov	24.6	20.6	4.4	19.4	44.1	24.2	83.9	12.2	15.7
Pdk 12	28Nov	18.0	23.7	3.8	16.9	46.4	24.9	84.9	12.6	20.1
Pdk 19	28Nov	17.6	21.8	4.5	16.7	41.6	20.3	>85	>12.7	18.6
Pdk 31	12Dec	14.6	25.3	4.5	14.8	45.6	24.8	79.5	11.8	18.4
Pdk 7	12Dec	13.6	22.1	4.2	11.1	54.6	28.6	70.7	10.8	19.0
Pdk 5	9 Jan	12.6	31.1	5.3	12.4	41.3	23.6	80.8	11.4	19.1
Pdk 28	9 Jan	17.0	28.7	5.2	10.9	42.3	25.3	78.7	11.1	17.9
Pdk 23	22Jan	12.8	31.5	5.2	8.3	44.3	27.0	76.5	10.8	19.3
Pdk 46	22Jan	10.4	15.7	3.7	8.9	56.2	34.3	56.6	8.3	33.9
Pdk 6	7 Feb	13.4	25.8	4.8	11.8	47.3	24.4	75.0	11.0	18.1
Pdk 12	21Feb	13.8	28.4	5.1	9.0	50.2	24.2	77.0	11.4	19.5
Pdk 21	21Feb	15.0	29.0	5.0	9.3	48.6	25.7	77.4	11.1	17.9
Pdk 23	5 Mar	10.4	30.5	5.2	10.5	48.2	25.4	76.6	11.0	17.9
Pdk 27	5 Mar	12.8	31.4	5.3	9.5	48.2	24.9	79.3	11.4	15.8
Pdk 11	18Mar	15.8	35.5	5.0	10.0	40.2	21.7	>85	12.6	12.8
Pdk 26	18Mar	15.4	31.1	4.6	10.5	48.2	22.6	84.3	12.4	16.8
Pdk 46	1 Apr	19.0	31.6	5.6	9.3	44.6	23.3	83.8	12.0	13.1
Pdk 32	1 Apr	14.5	33.8	5.9	8.5	41.5	22.3	84.5	12.0	13.7
Pdk 11	16Apr	17.8	29.6	4.8	13.9	34.4	24.0	84.3	12.1	13.0
Pdk 21	16Apr	17.4	30.6	5.3	12.4	39.5	24.0	84.8	12.1	13.6
Pdk 36	1May	12.2	30.4	4.4	11.9	43.1	22.8	84.0	12.1	13.1
Pdk 46	1May	12.0	31.9	4.7	9.8	46.9	22.8	>85	12.3	14.7

Northern Southland

Description	Date	RPM	% prot	% Lipid	% SSS	% NDF	% ADF	OMD	MJME/kg DM	%DM
Pdk 21	17Oct	14.4	32.4	4.7	9.2	41.3	24.3	84.9	12.2	13.4
Pdk 31	17Oct	13.8	32.6	5.5	8.6	38.9	24.3	>85	12.2	13.8
Pdk 15	31Oct	10.2	24.8	4.1	16.5	41.6	23.6	>85	12.4	14.0
Pdk 2	31Oct	10.4	27.5	5.2	18.1	41.7	23.8	>85	12.4	15.2
Pdk 18	14Nov	20.6	23.1	4.3	19.7	42.9	24.2	83.3	12.2	19.2
Pdk 22	14Nov	12.6	26.0	4.2	17.4	41.8	23.3	>85	>12.7	19.0
Pdk 7	28Nov	11.4	20.1	3.4	18.2	47.9	26.3	80.3	11.9	23.4
Pdk 8	28Nov	12.2	17.4	2.6	16.0	54.1	28.6	78.1	11.6	24.1
Pdk 18	12Dec	9.8	20.3	4.0	13.6	52.5	27.6	74.2	10.9	19.2
Pdk 4	12Dec	11.4	17.9	3.5	10.4	58.3	30.7	67.1	10.1	23.0
Pdk 22	9 Jan	8.8	25.4	4.4	9.9	46.3	26.8	74.6	10.7	24.2
Pdk 21	9 Jan	12.2	20.8	4.3	11.8	46.2	29.1	69.8	10.0	23.1
Pdk 21	22Jan	9.2	27.1	4.6	9.4	51.1	24.6	78.3	11.3	19.2
Pdk 22	7 Feb	8.0	18.1	3.4	9.3	57.6	32.4	62.2	9.3	36.8
Pdk 18	21Feb	7.6	21.8	4.7	10.0	54.1	26.0	69.1	10.2	26.4
Pdk 2	5 Mar	7.8	22.6	4.9	12.2	51.0	23.8	72.6	10.7	22.1
Pdk 16	18Mar	10.4	30.1	4.6	12.0	38.3	22.0	82.2	11.7	16.8
Pdk 25	18Mar	9.2	32.6	4.8	9.9	45.9	23.5	81.2	11.9	18.2
Pdk 6	1 Apr	13.2	25.6	4.4	11.7	46.4	25.0	77.7	11.1	15.4
Pdk 18	1 Apr	9.8	28.9	5.3	13.8	40.6	23.2	83.8	12.1	14.7
Pdk 27	16Apr	10.6	32.3	6.0	12.6	36.2	21.0	>85	12.9	16.2
Pdk 32	16Apr	14.2	25.0	4.2	14.6	41.5	25.5	77.7	11.0	18.0
Pdk 25	1 May	12.2	25.3	4.6	14.1	44.8	23.7	81.9	12.0	17.8
Pdk 3	1 May	13.2	28.8	5.1	12.9	46.1	21.4	83.0	12.3	15.8

Southland Monitor Farm Project

Weekly Update – 7 May 08

General Comments

Soil temperatures have halved this week as a result of the cold wet weather late last week followed by several severe frosts early this week. Consequently pasture growth rates have plummeted across the region with the highest recorded growth of only 15 kg DM/ha/day. The effect of this decline in growth has been a drop in average pasture cover on all farms. Measuring pasture growth over the next few months will be increasingly more challenging as frosts and pasture damage limit when and where the rising plate meter can be used.

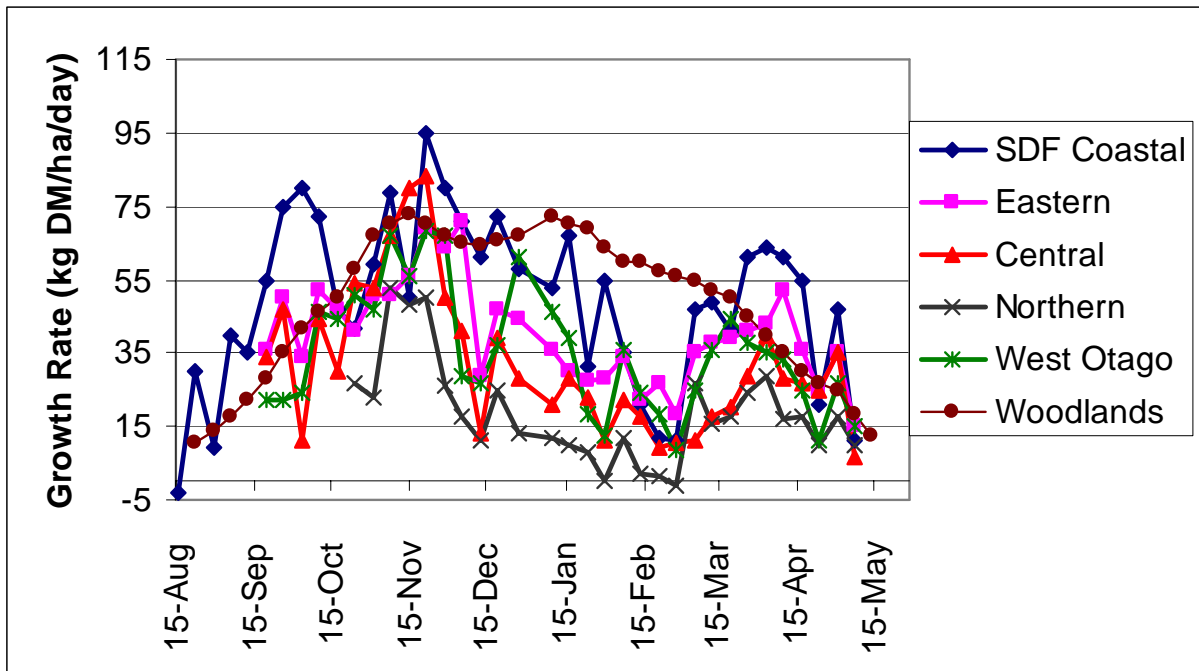
Milk production has dropped on all the farms this week, a likely reflection of the cold wet conditions and also the change in milking frequency on several farms. The demonstration farm has opted for OAD milking for the 'light' mob of cows in an attempt to put condition on them prior to drying off. The Northern farm has dried off 10 cows in an attempt to control somatic cell count now they are milking OAD.

Pasture quality results from last week show that the pasture quality is remaining high despite pasture covers increasing with the longer rotation lengths. ME ranged from 11.9 to 12.6 MJME/kg DM. Crude protein concentrations continue to be 25-31% range.

Farm Summary

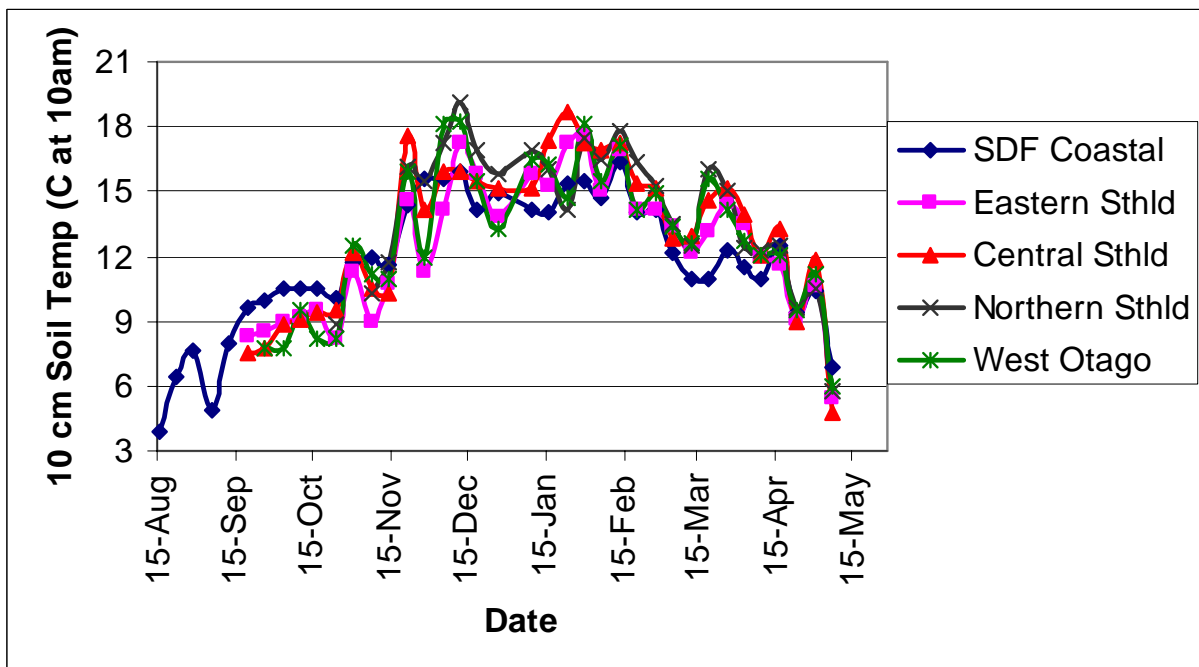
	Demo Farm	Eastern	Central	Northern	West Otago
Average cover (kg DM/ha)	2212	1968	1574	1533	1707
Rotation length (days)	36	52	25	42	30
Supplement (kg DM/cow)	0	2.5	2.25	6	4
Production (kg MS/cow)	1.23	1.26	1.32	1.10	-
Production (kg MS/ha)	3.0	3.4	3.8	2.2	-
Stocking rate (cows/ha)	2.47	2.66	2.88	2.0	2.67
N (kg/ha)	172	127	132	19	133
Soil temperature (°C)	6.9	5.4	4.8	5.8	6.0
Growth Rate (kg DM/day)*	11	15	7	10	15
Comments	2/3 rd TAD 1/3 rd OAD	TAD	16 hours	OAD	16 hours

Pasture Growth Rates

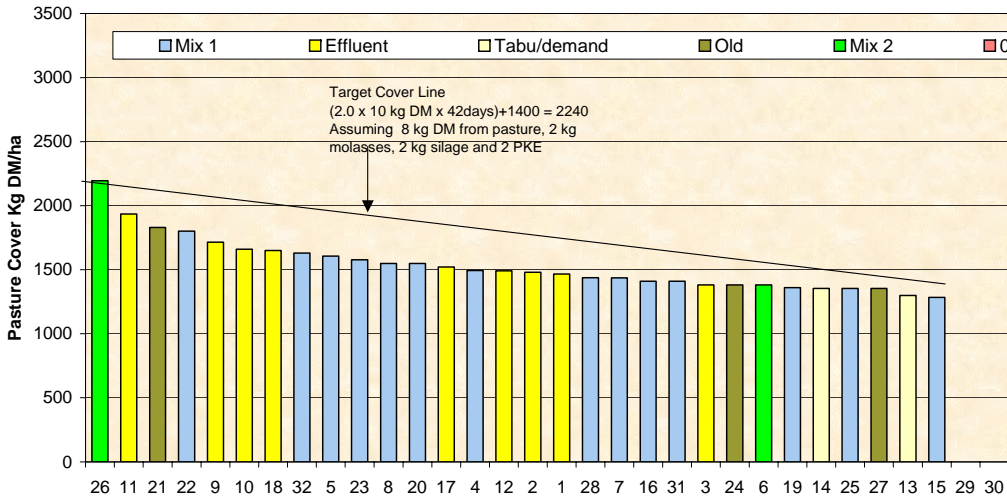


NB the Woodlands data is the long-term average from mature pastures at Woodlands measured using enclosure cages.

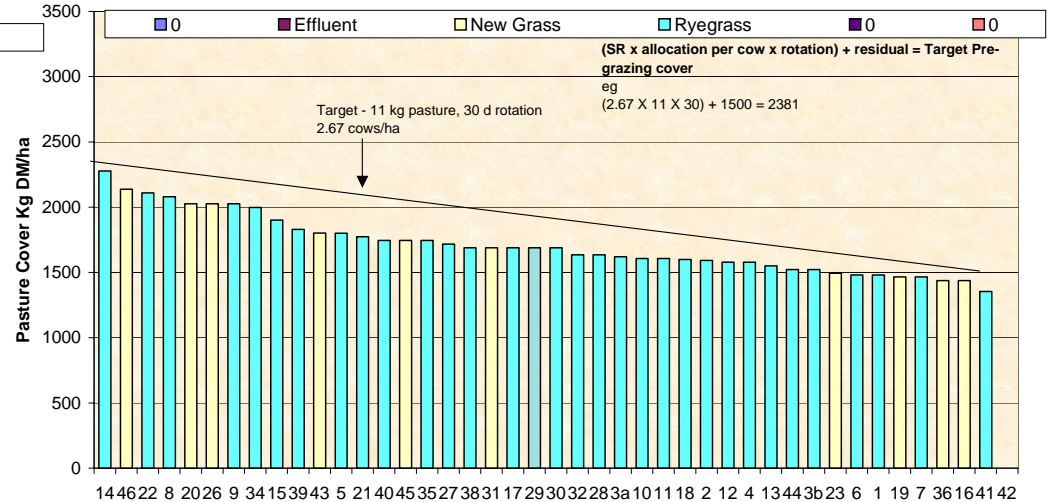
Soil Temperature



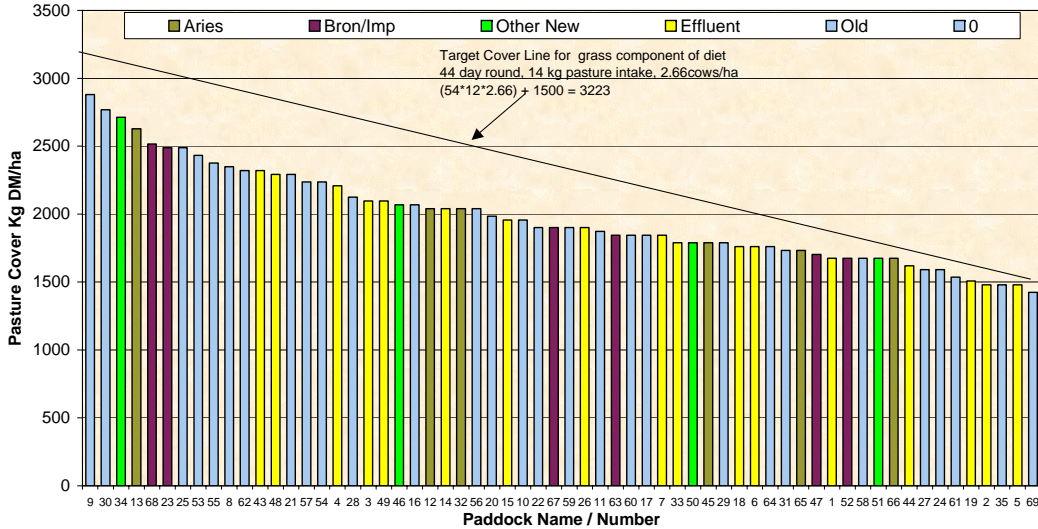
Farm Name Frei Dairy **Soil Temp:** 5.8 **07/05/2008** **Wedge Date**
Feed Wedge for Farm Block - Milking **Average Farm Cover** 1533
Current Growth Rate 9.8



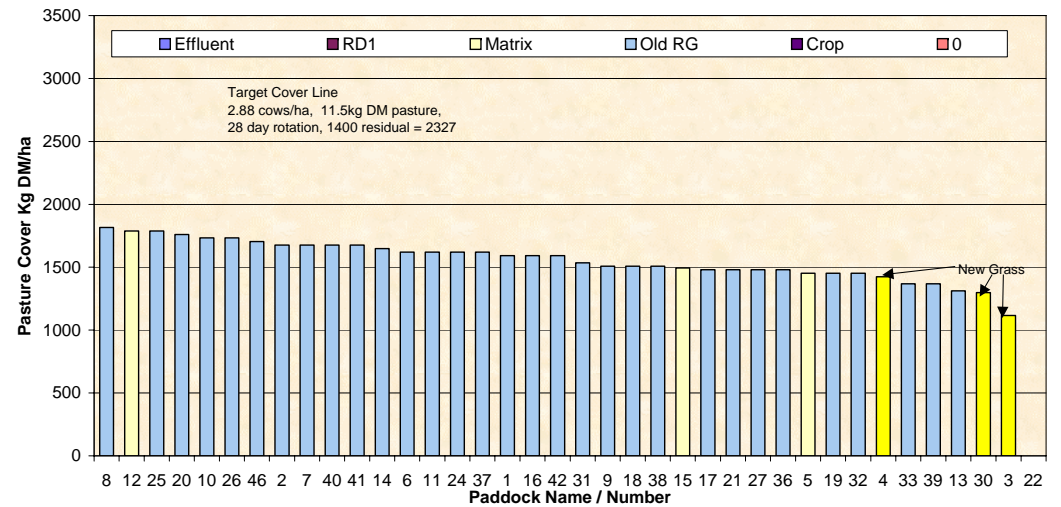
Farm Name Dave & Mel Goble **Soil Temp:** 6.0 **07/05/2008** **Wedge Date**
Feed Wedge for Farm Block - Milking **Average Farm Cover** 1707
Current Growth Rate 15.4



Farm Name Kevin & Debbie Hall **Soil Temp:** 5.4 **06/05/2008** **Wedge Date**
Feed Wedge for Farm Block - Milking **Average Farm Cover** 1968
Current Growth Rate 15.2



Farm Name George & Jose van der Poel **Soil Temp:** 4.8 **06/05/2008** **Wedge Date**
Feed Wedge for Farm Block - Milking **Average Farm Cover** 1557
Current Growth Rate 6.6



Pasture Quality

NOTE: We sample the paddocks immediately in front of the milkers, to height of 3.5cm (7 clicks on the rising plate meter). The RPM data in the table is the pre-grazing clicks recorded on the day of sampling.

Eastern Southland

Description	Date	RPM	% prot	% Lipid	% SSS	% NDF	% ADF	OMD	MJME/ kg DM	%DM
Pdk 33	2 Oct	18.2	27.6	5.6	12.8	40.8	23.4	82.9	12.1	15.7
Pdk 34	16Oct	16.8	22.4	4.4	16.9	41.3	25.0	81.6	11.8	18.0
Pdk 55	16Oct	12.8	26.5	4.5	11.7	46.2	26.2	81.1	11.6	15.4
Pdk 25	30 Oct	14.6	26.0	4.1	15.0	43.2	24.0	>85	12.7	19.5
Pdk 29	30 Oct	11.6	23.3	4.3	16.4	40.4	22.2	>85	12.5	17.3
Pdk 33	13Nov	12.8	28.5	4.4	16.4	42.6	22.9	>85	12.6	16.7
Pdk 69	13Nov	14.6	23.6	3.7	15.1	45.2	24.7	82.5	12.2	17.1
Pdk 47	27Nov	16.2	22.6	3.8	15.8	47.1	25.3	84.7	12.4	14.1
Pdk 26	27Nov	18.0	20.1	3.4	14.3	50.6	26.5	80.2	11.8	15.7
Pdk 33	11Dec	17.6	24.9	4.4	14.4	45.8	24.6	80.7	11.8	13.2
Pdk 12	11Dec	13.6	23.9	4.3	14.8	44.3	26.2	78.3	11.4	14.6
Pdk 46	8 Jan	13.0	33.6	5.7	7.1	34.5	25.0	79.7	10.7	14.0
Pdk 53	8 Jan	16.6	24.3	3.9	9.4	51.4	27.2	77.7	11.0	16.6
Pdk 64	22 Jan	15.8	29.5	4.6	8.9	45.7	25.7	79.3	10.9	12.8
Pdk 34	22 Jan	12.6	29.5	5.5	8.1	45.6	27.4	76.4	10.5	13.5
Pdk 60	6 Feb	13.2	23.7	4.1	10.3	52.6	24.9	75.6	11.4	22.3
Pdk 44	6 Feb	13.4	26.7	5.1	14.8	43.9	23.1	81.1	11.9	20.6
Pdk 47	20 Feb	11.0	28.6	5.1	12.1	44.8	24.4	79.4	11.4	19.8
Pdk 30	20Feb	12.2	28.1	4.6	10.4	49.9	26.3	75.5	10.8	22.3
Pdk 65	4 Mar	12.6	28.6	4.7	13.3	47.0	23.9	82.3	12.0	18.3
Pdk 57	4 Mar	12.4	31.9	4.6	10.2	51.2	22.1	84.3	12.3	16.8
Pdk 69	17Mar	13.6	27.9	4.7	9.8	49.2	25.3	81.1	11.6	14.1
Pdk 55	1 Apr	11.2	31.3	4.6	6.1	54.3	26.7	80.0	11.4	12.4
Pdk 68	1 Apr	18.0	31.6	5.0	12.3	40.8	25.5	>85	12.2	10.6
Pdk 51	15Apr	21.3	25.8	4.1	14.3	43.2	25.7	81.0	11.7	15.5
Pdk 65	15Apr	19.4	30.8	4.6	13.8	36.6	23.4	85.0	12.2	13.7
Pdk 24	30Apr	20.0	29.6	4.6	11.0	49.8	25.3	82.2	11.9	13.2
Pdk 27	30Apr	18.8	28.1	4.4	11.9	48.9	24.9	80.5	11.6	13.2

Central Southland

Description	Date	RPM	% prot	% Lipid	% SSS	% NDF	% ADF	OMD	MJME/kg DM	%DM
Pdk 42	2 Oct	13.0	21.6	4.9	10.3	39.6	24.6	>85	12.3	12.5
Pdk 18	16Oct	11.1	26.3	5.1	13.9	40.7	23.3	82.5	12.0	15.5
Pdk 39	16Oct	14.4	28.2	5.4	11.6	40.4	24.3	84.0	11.8	13.5
Pdk 20	30Oct	16.4	21.5	4.0	17.5	42.8	22.0	>85	>12.7	20.0
Pdk 4	30Oct	16.8	24.4	4.8	14.7	42.2	22.9	81.6	12.0	18.3
Pdk 12	13Nov	17.4	24.7	4.3	16.3	44.8	22.6	>85	>12.7	17.3
Pdk 6	13Nov	19.4	23.1	4.3	18.5	39.5	23.7	>85	12.5	18.9
Pdk 26	27Nov	15.8	17.8	2.9	16.2	49.6	29.8	75.4	11.2	18.3
Pdk 13	27Nov	16.4	23.1	3.8	16.9	43.8	25.4	81.5	11.9	19.6
Pdk 40	11Dec	14.2	17.8	3.3	16.6	53.3	31.5	70.3	10.6	21.1
Pdk 15	11Dec	15.3	24.4	4.7	13.5	50.6	25.3	79	11.8	17.1
Pdk 12	8 Jan	12.2	34.8	6.2	6.1	39.0	23.9	82.1	11.1	17.3
Pdk 16	8 Jan	9.1	32.7	5.8	9.7	37.0	23.3	83.7	11.5	16.6
Pdk 5	22Jan	11.8	29.9	5.3	9.0	46.5	25.8	77.1	10.9	17.8
Pdk 42	22Jan	10.8	32.5	4.7	14.4	43.0	23.4	>85	12.2	17.3
Pdk 15	6 Feb	10.8	33.4	5.9	13.8	36.9	21.2	>85	>12.7	19.7
Pdk 33	6 Feb	10.6	27.9	5.2	14.7	39.8	22.2	82.1	12.0	21.3
Pdk 9	20Feb	9.4	27.0	4.8	12.0	47.0	24.1	80.3	11.7	20.7
Pdk 21	20Feb	9.0	34.0	5.7	11.8	37.9	24.2	81.7	11.6	22.2
Pdk 2	4 Mar	11.8	28.4	5.2	9.6	51.8	25.0	76.2	11.2	20.7
Pdk 27	17Mar	10.4	34.1	4.8	7.3	48.2	21.9	>85	>12.7	15.8
Pdk 18	1 Apr	12.2	31.7	6.0	10.3	39.5	22.5	82.3	11.9	14.6
Pdk 31	1 Apr	10.4	32.6	6.8	13.2	37.6	21.2	>85	>12.7	16.6
Pdk 13	15Apr	14.0	32.9	6.0	12.0	38.5	20.9	85.8	12.5	16.8
Pdk 41	15Apr	11.6	30.6	5.4	15.0	36.9	21.6	89.0	13.1	15.3
Pdk 9	30Apr	12.4	29.8	5.1	12.7	45.0	21.7	83.8	12.3	17.3
Pdk 27	30Apr	11.4	30.9	4.9	12.3	45.1	23.1	>85	12.6	18.1

West Otago

Description	Date	RPM	% prot	% Lipid	% SSS	% NDF	% ADF	OMD	MJME/kg DM	%DM
Pdk 45	3 Oct	10.4	34.1	5.9	9.9	36.6	22.7	>85	12.4	14.2
Pdk 19	17Oct	13.6	28.1	4.8	11.8	41.7	24.1	>85	12.3	12.4
Pdk 29	17Oct	14.8	29.3	4.7	9.6	46.1	25.1	83.7	11.9	13.0
Pdk 21	31Oct	13.8	25.9	4.7	15.1	43.4	25.4	83.9	12.0	18.1
Pdk 35	31Oct	12.8	28.3	5.1	15.2	41.1	22.9	>85	12.4	17.9
Pdk 6	14Nov	22.4	20.6	4.1	16.9	44.8	24.6	81.0	11.9	15.6
Pdk 40	14Nov	24.6	20.6	4.4	19.4	44.1	24.2	83.9	12.2	15.7
Pdk 12	28Nov	18.0	23.7	3.8	16.9	46.4	24.9	84.9	12.6	20.1
Pdk 19	28Nov	17.6	21.8	4.5	16.7	41.6	20.3	>85	>12.7	18.6
Pdk 31	12Dec	14.6	25.3	4.5	14.8	45.6	24.8	79.5	11.8	18.4
Pdk 7	12Dec	13.6	22.1	4.2	11.1	54.6	28.6	70.7	10.8	19.0
Pdk 5	9 Jan	12.6	31.1	5.3	12.4	41.3	23.6	80.8	11.4	19.1
Pdk 28	9 Jan	17.0	28.7	5.2	10.9	42.3	25.3	78.7	11.1	17.9
Pdk 23	22Jan	12.8	31.5	5.2	8.3	44.3	27.0	76.5	10.8	19.3
Pdk 46	22Jan	10.4	15.7	3.7	8.9	56.2	34.3	56.6	8.3	33.9
Pdk 6	7 Feb	13.4	25.8	4.8	11.8	47.3	24.4	75.0	11.0	18.1
Pdk 12	21Feb	13.8	28.4	5.1	9.0	50.2	24.2	77.0	11.4	19.5
Pdk 21	21Feb	15.0	29.0	5.0	9.3	48.6	25.7	77.4	11.1	17.9
Pdk 23	5 Mar	10.4	30.5	5.2	10.5	48.2	25.4	76.6	11.0	17.9
Pdk 27	5 Mar	12.8	31.4	5.3	9.5	48.2	24.9	79.3	11.4	15.8
Pdk 11	18Mar	15.8	35.5	5.0	10.0	40.2	21.7	>85	12.6	12.8
Pdk 26	18Mar	15.4	31.1	4.6	10.5	48.2	22.6	84.3	12.4	16.8
Pdk 46	1 Apr	19.0	31.6	5.6	9.3	44.6	23.3	83.8	12.0	13.1
Pdk 32	1 Apr	14.5	33.8	5.9	8.5	41.5	22.3	84.5	12.0	13.7
Pdk 11	16Apr	17.8	29.6	4.8	13.9	34.4	24.0	84.3	12.1	13.0
Pdk 21	16Apr	17.4	30.6	5.3	12.4	39.5	24.0	84.8	12.1	13.6
Pdk 36	1May	12.2	30.4	4.4	11.9	43.1	22.8	84.0	12.1	13.1
Pdk 46	1May	12.0	31.9	4.7	9.8	46.9	22.8	>85	12.3	14.7

Northern Southland

Description	Date	RPM	% prot	% Lipid	% SSS	% NDF	% ADF	OMD	MJME/kg DM	%DM
Pdk 21	17Oct	14.4	32.4	4.7	9.2	41.3	24.3	84.9	12.2	13.4
Pdk 31	17Oct	13.8	32.6	5.5	8.6	38.9	24.3	>85	12.2	13.8
Pdk 15	31Oct	10.2	24.8	4.1	16.5	41.6	23.6	>85	12.4	14.0
Pdk 2	31Oct	10.4	27.5	5.2	18.1	41.7	23.8	>85	12.4	15.2
Pdk 18	14Nov	20.6	23.1	4.3	19.7	42.9	24.2	83.3	12.2	19.2
Pdk 22	14Nov	12.6	26.0	4.2	17.4	41.8	23.3	>85	>12.7	19.0
Pdk 7	28Nov	11.4	20.1	3.4	18.2	47.9	26.3	80.3	11.9	23.4
Pdk 8	28Nov	12.2	17.4	2.6	16.0	54.1	28.6	78.1	11.6	24.1
Pdk 18	12Dec	9.8	20.3	4.0	13.6	52.5	27.6	74.2	10.9	19.2
Pdk 4	12Dec	11.4	17.9	3.5	10.4	58.3	30.7	67.1	10.1	23.0
Pdk 22	9 Jan	8.8	25.4	4.4	9.9	46.3	26.8	74.6	10.7	24.2
Pdk 21	9 Jan	12.2	20.8	4.3	11.8	46.2	29.1	69.8	10.0	23.1
Pdk 21	22Jan	9.2	27.1	4.6	9.4	51.1	24.6	78.3	11.3	19.2
Pdk 22	7 Feb	8.0	18.1	3.4	9.3	57.6	32.4	62.2	9.3	36.8
Pdk 18	21Feb	7.6	21.8	4.7	10.0	54.1	26.0	69.1	10.2	26.4
Pdk 2	5 Mar	7.8	22.6	4.9	12.2	51.0	23.8	72.6	10.7	22.1
Pdk 16	18Mar	10.4	30.1	4.6	12.0	38.3	22.0	82.2	11.7	16.8
Pdk 25	18Mar	9.2	32.6	4.8	9.9	45.9	23.5	81.2	11.9	18.2
Pdk 6	1 Apr	13.2	25.6	4.4	11.7	46.4	25.0	77.7	11.1	15.4
Pdk 18	1 Apr	9.8	28.9	5.3	13.8	40.6	23.2	83.8	12.1	14.7
Pdk 27	16Apr	10.6	32.3	6.0	12.6	36.2	21.0	>85	12.9	16.2
Pdk 32	16Apr	14.2	25.0	4.2	14.6	41.5	25.5	77.7	11.0	18.0
Pdk 25	1 May	12.2	25.3	4.6	14.1	44.8	23.7	81.9	12.0	17.8
Pdk 3	1 May	13.2	28.8	5.1	12.9	46.1	21.4	83.0	12.3	15.8