

# Southland Monitor Farm Project

## Weekly Update – 13 May 2009

### General Comments

Soil temperatures declined in all regions this week except Otago where temperature at Telford rose by 1 °C. It is interesting to note how the soil temperatures this year have followed very similar trends to last year (see graph).

Pasture growth rates continued to decline this week with Central Southland only recording 4 kg DM/ha/day growth in the last week. The best growth was recorded at Telford. Autumn growth continues to be slower than last autumn. Conditions during the farm walk on Tuesday were extremely wet and the decision was made to postpone the Central Southland walk until Wednesday. Consequently the decision was made not to walk the Northern Southland farm on Wednesday as the cows were in the process of being dried off. Over the next 2 months the frequency of the farm walks will decline on all properties. Weekly summaries will only be produced on the weeks when farm walks are conducted. The proposed weeks are

26/27<sup>th</sup> May

9/10<sup>th</sup> June

30 Jun/1<sup>st</sup> July

21/22<sup>nd</sup> July

4/5<sup>th</sup> Aug

18/19<sup>th</sup> Aug

Cows on the Northern Southland farm were put into the wintering tunnel house on 10<sup>th</sup> May and were dried off on the 14<sup>th</sup>. The Eastern Southland farm is now milking once a day and the Central Southland farm is on 16 hours milkings.

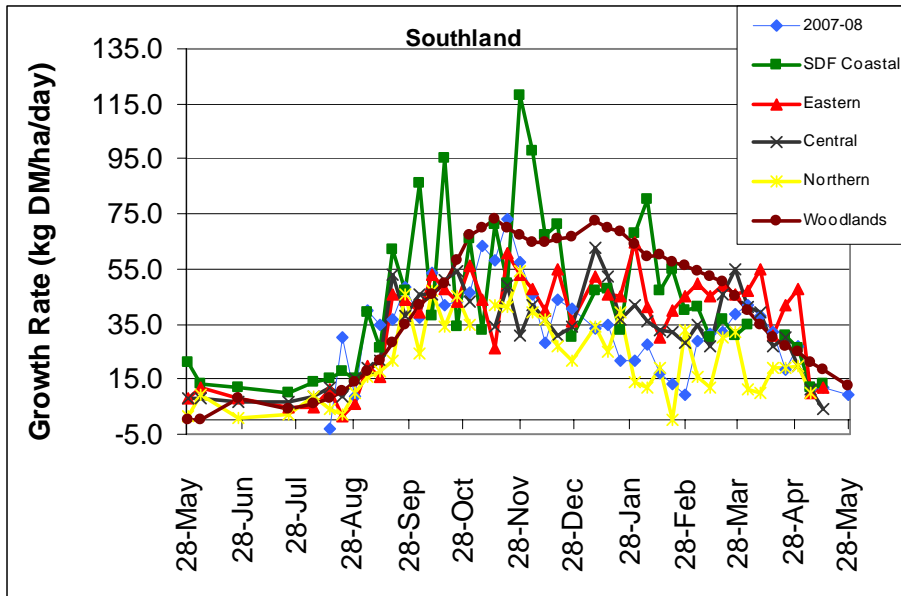
### Weekly Tips

Doing a winter feed budget is essential to determine exactly how much feed you have on hand. To calculate your silage stack volume measure the width, length and height then multiply together to get your cubic metres. One cubic metre contains 500-800 kg wet weight or 150-240 kg DM (at 30% DM). For balage, a 500 kg wet weight bale will have 150-200 kg DM (30-40%DM). For more information search for Feed Supply and Demand Information at [www.dairynz.co.nz](http://www.dairynz.co.nz)

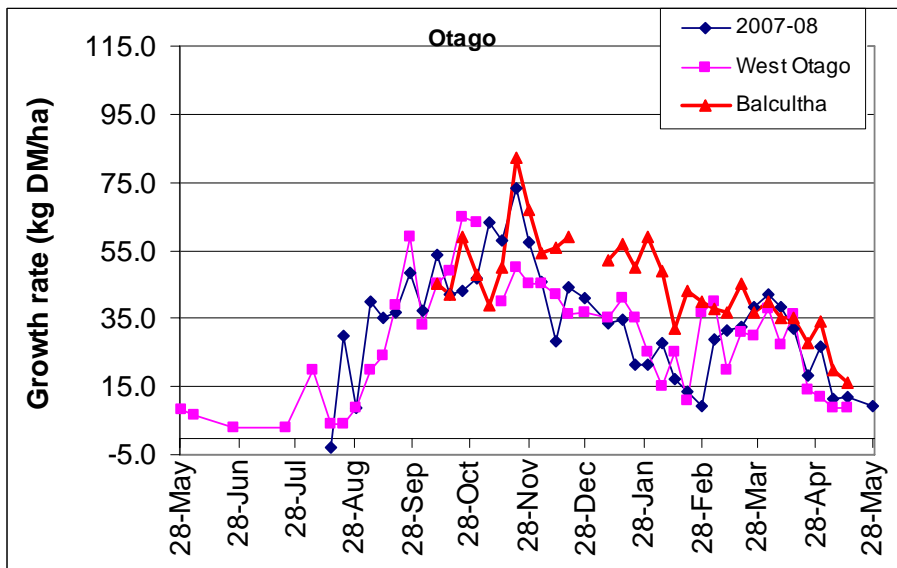
### Farm Summary

	Demo Farm	Eastern	Central	Northern	West Otago	Telford
Average cover (kg DM/ha)	1866	1756	1685	-	1498	1820
Rotation length (days)	35	45	29	-	34	35
Stocking rate	2.3	2.57	2.1	0	2.16	1.0
% peak cows milking	81	91	87	0	85	33
Milksolids kg/cow	1.15	1.37	1.38	-	-	1.1
Milksolids kg/ha	2.6	3.5	3.1	-	-	1.2
N (kg/ha)	94	79	74	10	90	147
Supplement (kg/cow/day)	6	5.7	4.8	-	4	3.5
Soil temperature (°C)	7.9	8.2	7.8	-	8.1	9.1
Growth Rate (kg DM/day)	13	12	4	-	9	16
Rainfall	92	66	50	-	41	-
Comments	One herd OAD, silage started	OAD milking	16 hrs from 8 <sup>th</sup> May	Dried off	OAD milking	

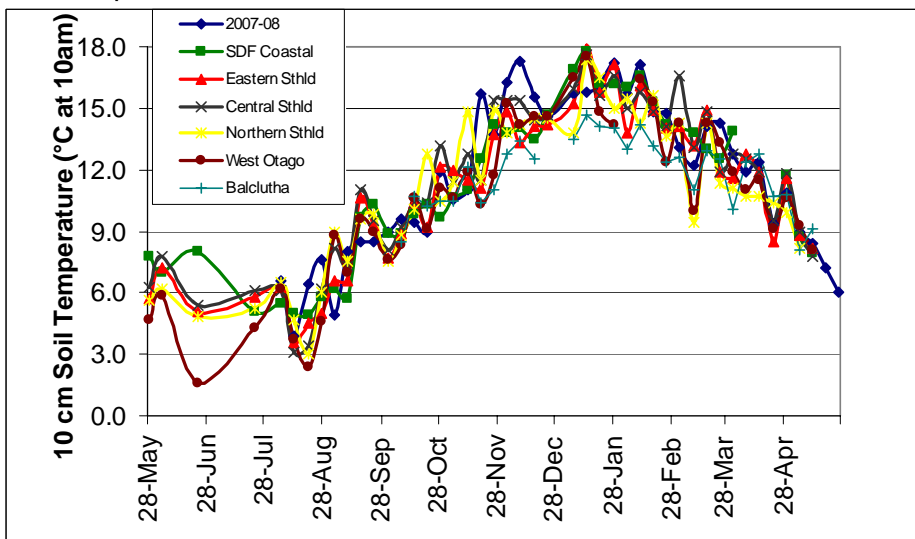
## Pasture Growth Rates



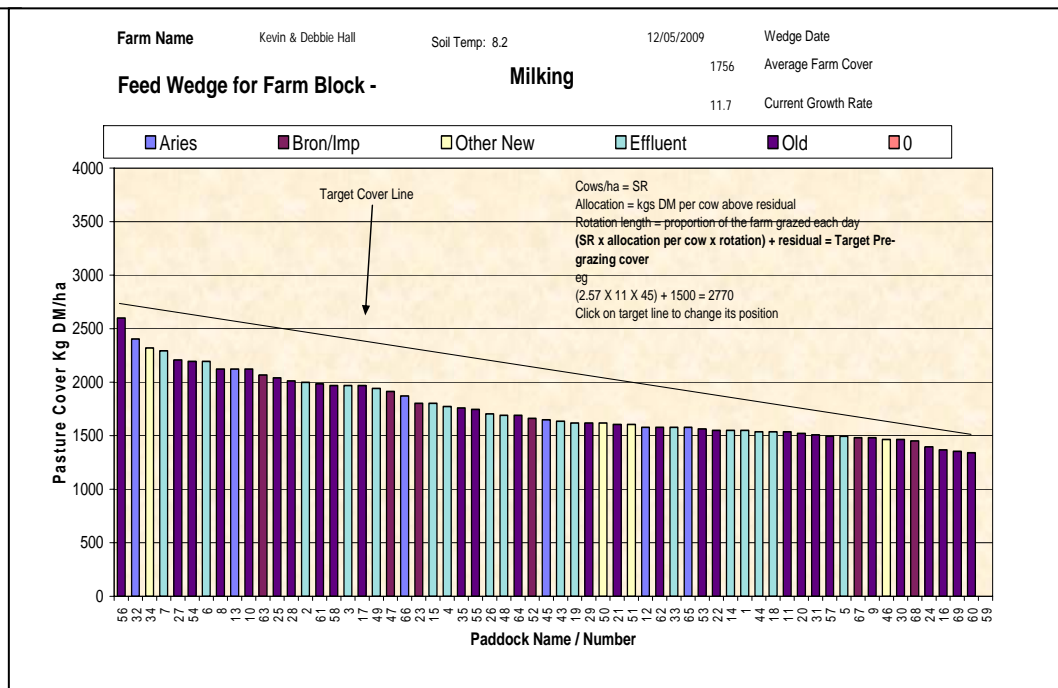
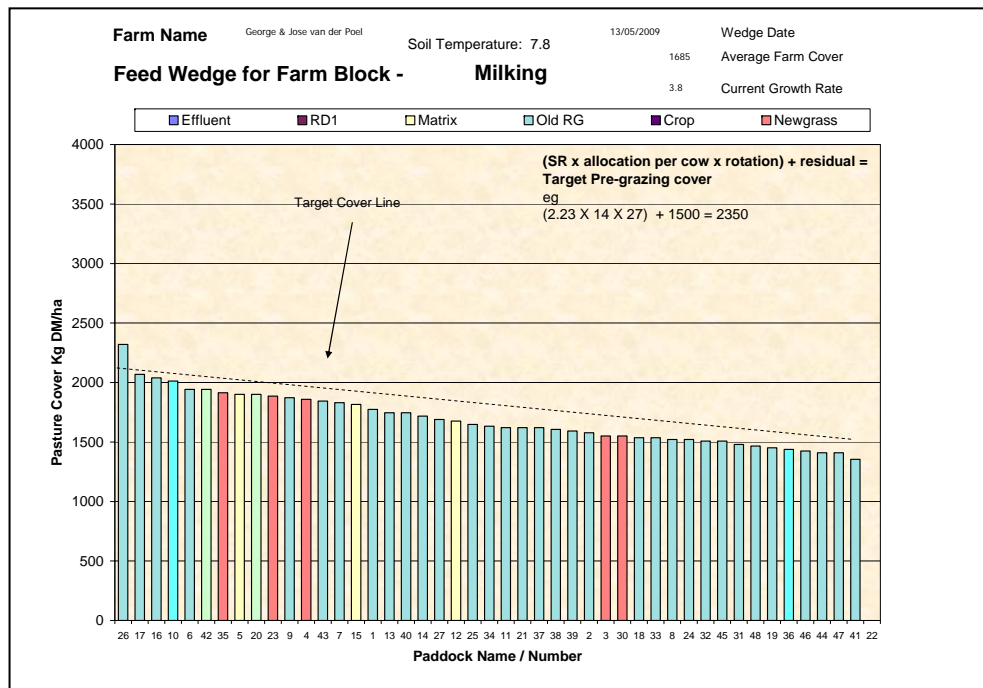
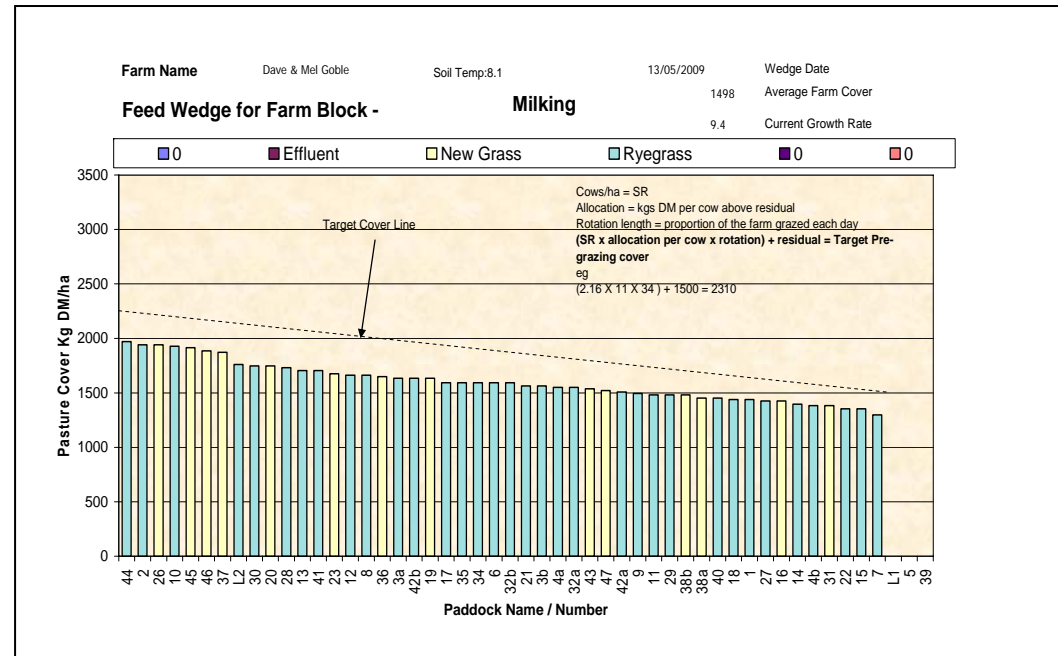
NB the Woodlands data is the long-term average from mature pastures at Woodlands measured using enclosure cages.



## Soil Temperature



No wedge from Northern Southland this week as the farm wasn't measured



## Pasture Quality

NOTE: We sample the paddocks immediately in front of the milkers, to height of 3.5cm (7 clicks on the rising plate meter). The RPM data in the table is the pre-grazing clicks recorded on the day of sampling.

## Eastern Southland

Description	Date	RPM	% prot	% Lipid	% SSS	% NDF	% ADF	OMD	MJME/ kg DM	%DM
Pdk 16	25Jun	13.8	24.3	3.9	15.4	49.8	28.2	80.6	11.8	16.7
Pdk 43	25 Jun	15.8	26.2	4.8	12.1	50.7	27.2	78.2	11.3	15.9
Pdk 43	22 Jul	18.8	24.8	4.4	14.1	52	26	78.6	11.5	16.0
Pdk 16	22 Jul	13.6	26.4	4.7	14.5	48.0	24.7	82.7	11.9	17.7
Pdk 43	5 Aug	13.1	26.1	5.3	15.5	44.0	24.0	80.3	11.5	15.1
Pdk 16	5 Aug	13.6	25.2	4.8	16.9	40.9	25.4	81.3	11.6	15.0
Pdk 16	19Aug	13.6	24.3	4.3	15.5	42.7	26.1	80.7	11.6	15.5
Pdk 50	19Aug	16.2	26.9	5.3	15.1	42.4	24.6	82	12	14.2
Pdk 52	2 Sep	16.0	23.3	4.9	16.1	43.1	24.4	80.1	11.6	22.0
Pdk 2	2 Sep	14.0	26.6	5.8	11.4	45.3	24.2	78.2	11.2	19.2
Pdk 1	16Sep	9.8	26.1	5.9	10.5	47.7	25.8	78	11.3	19.7
Pdk 7	16Sep	13.4	24.6	5.6	13.2	47.0	24.6	79.3	11.5	19.8
Pdk 47	30Sep	12.8	33.3	5.2	11.0	45.1	22.3	>85	>12.7	15.8
Pdk 64	30Sep	15.0	28.8	5.2	14.6	44.8	24.1	84.9	12.5	16.4
Pdk 57	14 Oct	14.0	30.3	6.1	12.5	43.7	24.2	82.0	11.8	18.5
Pdk 30	14 Oct	14.4	33.1	5.7	13.4	41.0	24.0	84.6	12.3	17.5
Pdk 43	28 Oct	17.2	25.6	4.9	15.3	46.4	25.0	82.8	12.1	18.0
Pdk 11	28 Oct	14.2	24.2	4.7	14.5	48.2	24.8	79.7	11.8	18.7
Pdk 46	11Nov	12.2	29.4	5.0	11.1	43.9	24.3	83.9	12.0	11.9
Pdk 52	11Nov	12.0	32.1	5.5	11.1	40.7	22.7	84.9	11.8	12.7
Pdk 2	25Nov	13.6	33.0	5.9	7.7	40.6	26.9	80.6	11.0	13.4
Pdk 11	25Nov	13.1	29.4	5.0	6.0	45.1	26.1	74.3	10.4	15.8
Pdk 69	9Dec	14.8	28.1	5.1	12.6	46.0	23.1	82.5	12.0	13.8
Pdk 7	9 Dec	12.3	26.1	4.9	14.9	44.3	23.3	82.0	12.1	14.5
Pdk 7	6 Jan	16.4	23.9	4.4	13.4	46.9	24.4	80.7	12.0	17.3
Pdk 2	6 Jan	17.8	28.1	5.1	12.9	42.5	24.1	82.4	11.8	16.3
Pdk 3	21 Jan	17.5	25.9	4.5	13.8	43.7	24.0	83.2	12.1	11.5
Pdk 12	21 Jan	16.0	22.9	3.7	12.2	50.4	26.3	78.9	11.7	14.7
Pdk 28	3 Feb	17.9	28.5	5.1	14.0	40.9	23.7	83.8	12.0	13.9
Pdk 34	3 Feb	15.7	24.2	4.4	14.8	47.8	26.2	82.0	11.9	16.5
	17 Feb									
	17 Feb									
Pdk 45	3 Mar	18.9	26.1	4.4	<1	52.8	24.8	78.8	10.7	13.0
Pdk 51	3 Mar	15.6	30.8	5.3	9.4	44.4	23.4	83.5	11.7	13.3
Pdk 9	17 Mar	18.4	27.3	5.3	14.4	40.4	23.9	82.4	11.8	12.5
Pdk 50	17 Mar	18.9	26.8	5.1	11.4	44.7	25.0	80.0	11.6	11.9
Pdk 57	31Mar	17.8	29.5	5.4	10.6	46.4	24.8	83.2	11.9	11.9
Pdk 67	31Mar	17.2	31.2	5.6	10.3	43.6	22.2	>85	12.2	11.7
Pdk 51	14 Apr	15.8	31.9	4.6	9.1	42.5	21.9	88.2	>12.7	14.3
Pdk 65	14 Apr	15.9	27.8	5.0	12.1	39.6	21.3	83.8	12.2	14.2
Pdk 30	28 Apr	17.7	29.3	5.7	12.8	43.6	21.6	>85	12.4	15.7
Pdk 68	28 Apr	15.7	27.6	5.2	12.9	44.1	24.7	82.7	11.9	15.1

## Central Southland

Description	Date	RPM	% prot	% Lipid	% SSS	% NDF	% ADF	OMD	MJME/kg DM	%DM
Pdk 6	25 Jun	12.2	31.2	5.6	11.6	44.9	21.9	>85	12.6	19.9
Pdk 26	25 Jun	9.8	28.6	5.2	14.2	44.1	24.4	81.3	12.0	19.6
Pdk 26	22 Jul	11.4	27.8	5.5	15.2	42.8	23.6	83.1	11.9	18.2
Pdk 6	22 Jul	13.0	27.0	5.3	14.3	45.6	23.4	82.4	12.1	19.9
Pdk 26	5 Aug	18.2	27.9	5.7	15.2	39.8	23.8	81.7	11.6	17.1
Pdk 6	5 Aug	13.6	32.4	5.9	14.4	37.4	22.3	>85	12.6	20.8
Pdk 21	19Aug	-	28.7	4.6	11.9	41.2	23.1	>85	12.3	19.3
Pdk 9	19Aug	11.6	30.1	5.1	13.1	41.1	22.1	>85	>12.7	21.8
Pdk 12	2 Sep	15.0	30.3	6.2	12.6	42.1	20.7	84.7	12.5	21.1
Pdk 3	2 Sep	15.5	25.2	6.0	17.5	40.0	21.0	>85	>12.7	21.9
Pdk 18	16Sep	18.4	29.6	5.4	19.7	45.7	24.5	81.7	11.7	19.3
Pdk 16	16Sep	18.0	28.1	5.8	13.3	43.4	22.5	84.1	12.2	19.7
Pdk 36	30Sep	10.3	22.1	4.9	17.1	48.1	23.4	82.9	12.2	21.1
Pdk 26	30Sep	8.8	28.2	5.6	14.9	44.9	22.2	>85	12.7	19.3
Pdk 19	14 Oct	15.8	20.3	4.4	24.1	37.9	22.1	>85	>12.7	22.5
Pdk 42	14 Oct	15.8	25.3	5.3	19.3	41.0	23.4	>85	>12.7	19.2
Pdk 46	28 Oct	16.8	23.2	5.0	18.4	36.2	23.1	83.2	11.9	18.9
Pdk 26	28 Oct	14.8	28.1	5.9	13.1	36.3	23.5	83.2	11.8	18.7
Pdk 18	11Nov	15.2	22.5	4.6	16.3	45.6	24.7	80.0	11.9	19.7
Pdk 43	11Nov	17.2	30.1	5.3	12.6	40.8	22.1	85.8	12.5	16.3
Pdk 33	25Nov	15.2	28.9	5.1	10.6	45.8	27.9	76.0	10.7	17.0
Pdk 8	25Nov	16.0	31.4	5.0	7.6	47.5	24.6	81.2	11.3	18.1
Pdk 46	9 Dec	*	24.3	4.5	17.4	44.6	24.1	83.9	12.4	18.2
Pdk 12	9 Dec	18.0	23.1	4.6	15.7	45.4	26.1	78.4	11.5	20.5
Pdk 42	6 Jan	19.9	21.8	4.1	17.9	43.2	24.9	84.4	12.4	18.3
Pdk 21	6 Jan	15.8	24.5	4.2	14.0	43.7	26.8	79.0	11.5	19.8
Pdk 15	21 Jan	14.9	29.9	5.1	13.9	41.0	22.2	>85	12.7	12.8
Pdk 19	21 Jan	11.0	23.9	4.3	15.9	45.2	25.1	81.9	12.1	13.8
Pdk 18	3 Feb	12.9	27.4	4.8	10.7	47.9	24.3	80.2	11.5	18.5
Pdk 30	3 Feb	14.3	28.8	4.7	13.4	42.6	22.7	84.6	12.2	18.1
Pdk 10	17Feb	14.5	24.2	4.7	15.3	44.1	24.6	82.3	11.9	18.9
Pdk 42	17Feb	15.3	25.6	4.7	16.9	39.1	23.5	84.9	12.2	19.8
Pdk 1	3 Mar	13.8	25.3	4.8	14.6	44.5	25.5	81.2	11.6	16.6
Pdk 5	3 Mar	14.6	28.8	5.7	14.6	40.8	22.7	>85	12.1	15.8
Pdk 4	17Mar	13.1	29.2	5.2	16.1	40.9	23.1	85.2	12.5	16.3
Pdk 10	17Mar	16.7	25.5	5.2	16.1	43.1	24.1	81.8	11.9	17.5
Pdk 6	31Mar	13.2	29.0	5.4	12.7	43.5	23.5	84.9	12.1	16.2
Pdk 16	31Mar	16.2	31.1	5.6	11.2	42.2	22.5	>85	12.0	14.0
Pdk 11	14Apr	11.7	28.5	4.9	12.8	40.7	23.0	86.3	12.5	17.9
Pdk 43	14Apr	14.8	28.3	5.1	14.6	40.1	21.1	90.6	>12.7	15.9
Pdk 5	28 Apr	11.6	27.0	5.6	16.6	40.2	22.0	>85	12.6	19.2
Pdk 38	28 Apr	12.7	26.9	5.3	15.8	43.8	22.9	>85	12.4	18.2





# Southland Monitor Farm Project

## Weekly Update – 6 May 2009

### General Comments

Soil temperatures dropped considerably this week with only one region recording a soil temperature greater than 9 °C. Temperatures this week were about 3 °C higher than the same week last year. It is interesting to note how the soil temperatures this year have followed very similar trends to last year (see graph).

Pasture growth rates were down again this week with most regions only recording 10-12 kg DM/ha/day growth. As a consequence all the feed wedges are now showing a significant deficit. The demonstration farm has one herd on OAD milking and commenced offering silage mid week. All other farms are continuing to offer supplement. The West Otago farm has switched from 16 hour to once a day milking.

Pasture samples collected last week indicate that pasture quality remains high. The lowest recorded ME was 11.9 with the rest of the samples between 12 and 12.6 MJ/kg DM. Crude protein concentrations were above 25% on all but one sample collected from the Northern Southland farm. NDF levels were all below 45% with the lowest sample testing at 36% NDF.

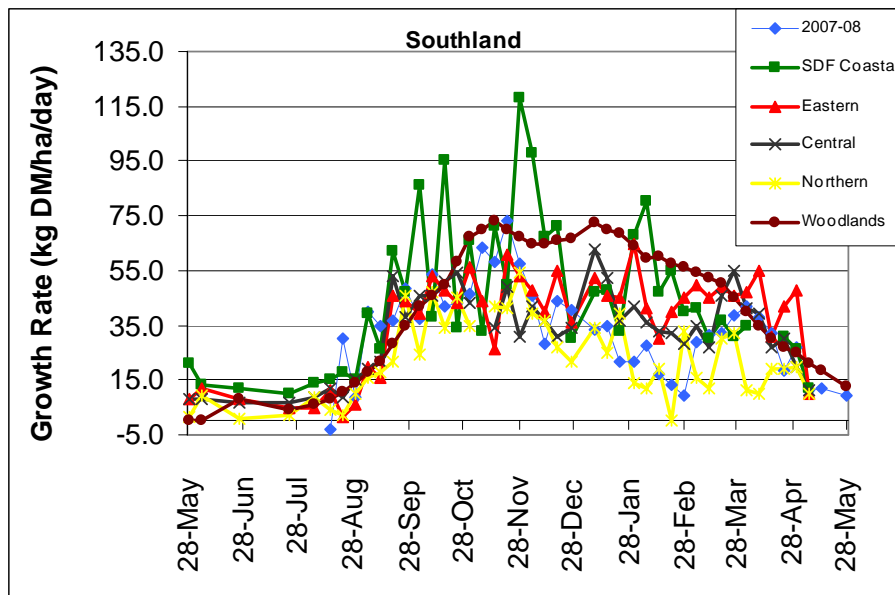
### Weekly Tips

May is a month of variable growth so continue to monitor pasture cover. A number of farms have experienced a large decline in APC over the past week. Make sure you have a plan for drying off the herd and have revised your autumn feed budget with actual growth rates. Give priority to drying off earlier calving cows as they have less time to put on condition. Monitor cow condition regularly, getting a friend to score some cows is useful for an objective assessment. Watch out for increasing SCC, especially if you are considering once-a-day milking, as these can get out of control quickly with lower milk volumes.

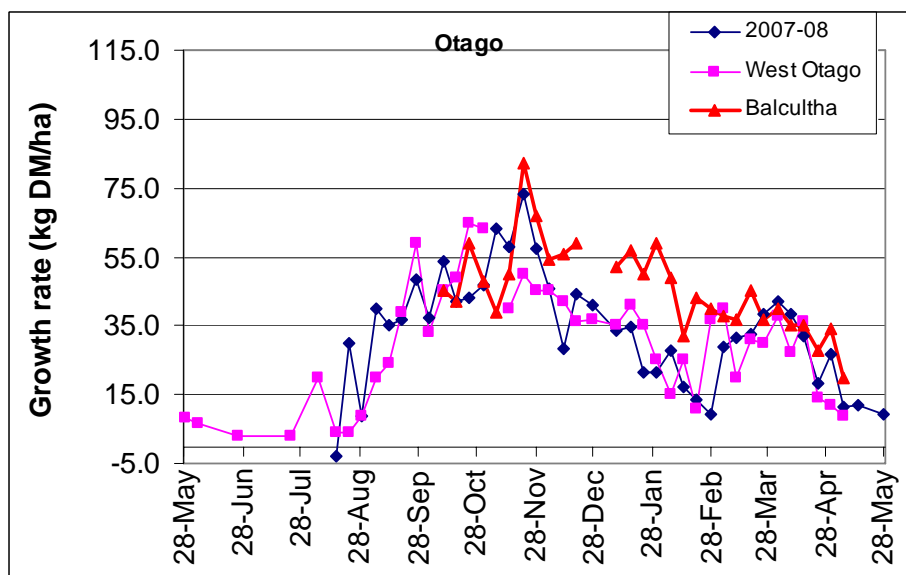
### Farm Summary

	Demo Farm	Eastern	Central	Northern	West Otago	Telford
Average cover (kg DM/ha)	2012	1892	1849	1466	1673	1852
Rotation length (days)	36	45	27	40	34	35
Stocking rate	2.3	2.68	2.23	1.93	2.16	2.0
% peak cows milking	81	91	94	77	85	65
Milksolids kg/cow	1.20	1.39	1.46	1.20	-	1.27
Milksolids kg/ha	2.7	3.9	3.3	2.3	-	2.5
N (kg/ha)	94	79	74	10	90	147
Supplement (kg/cow/day)	0	2.9	3	4	4	0.5
Soil temperature (°C)	8.7	8.8	9.0	8.2	9.3	8.1
Growth Rate (kg DM/day)	12	10	11	10	9	20
Rainfall	6	5	6	8	3	12
Comments	One herd OAD, silage started				OAD milking	

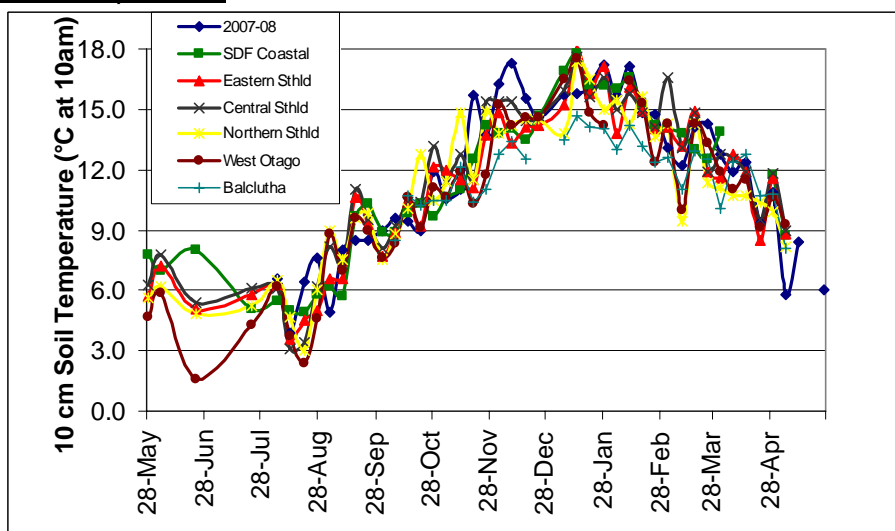
## Pasture Growth Rates

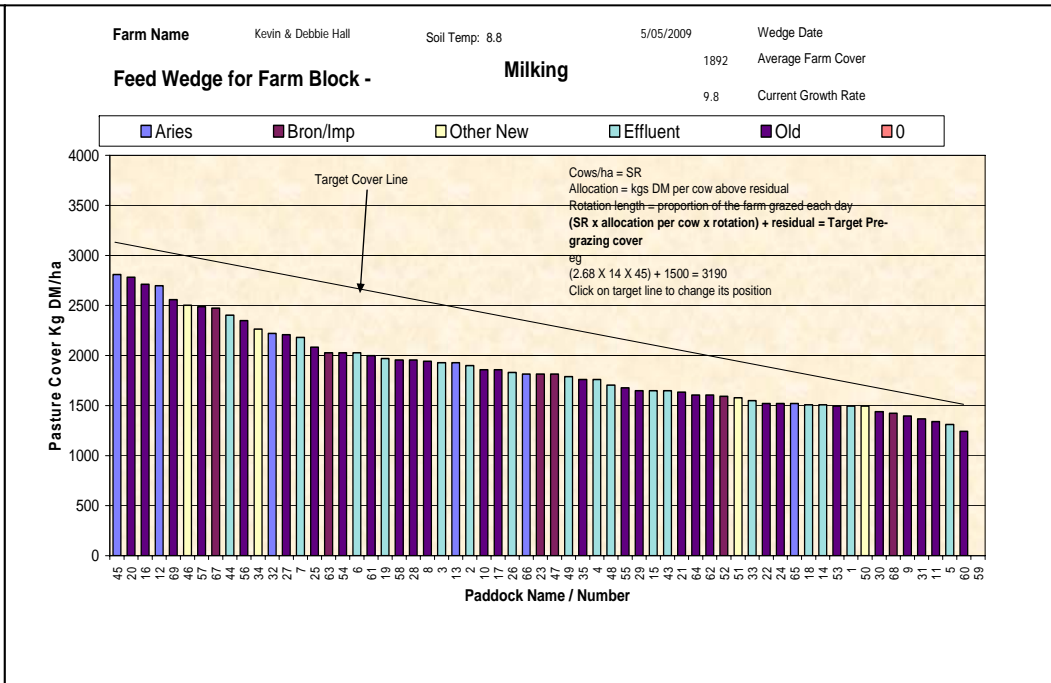
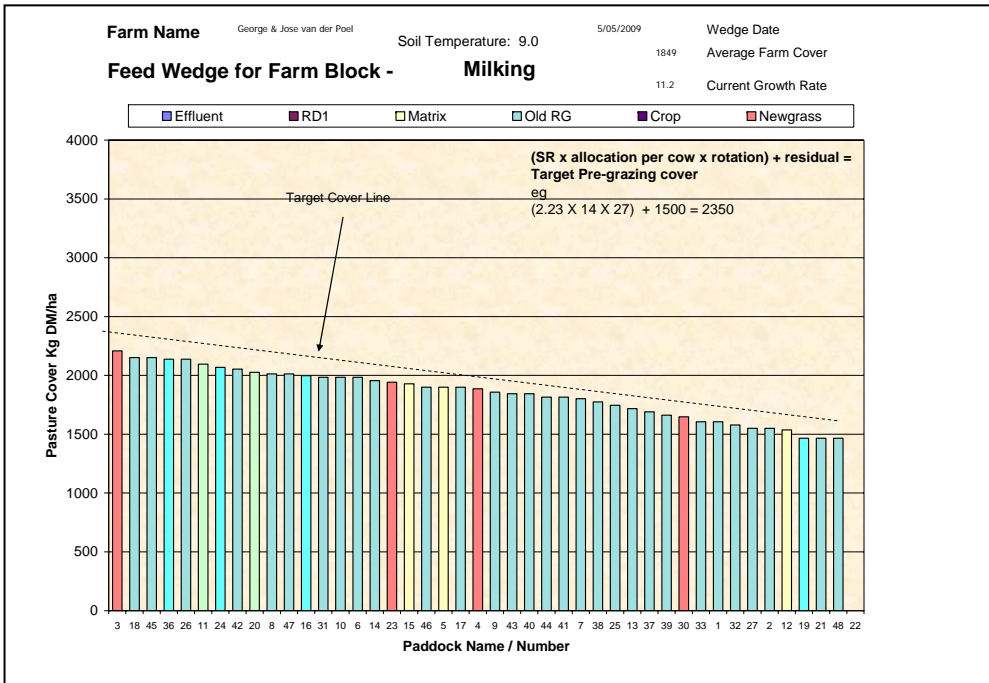
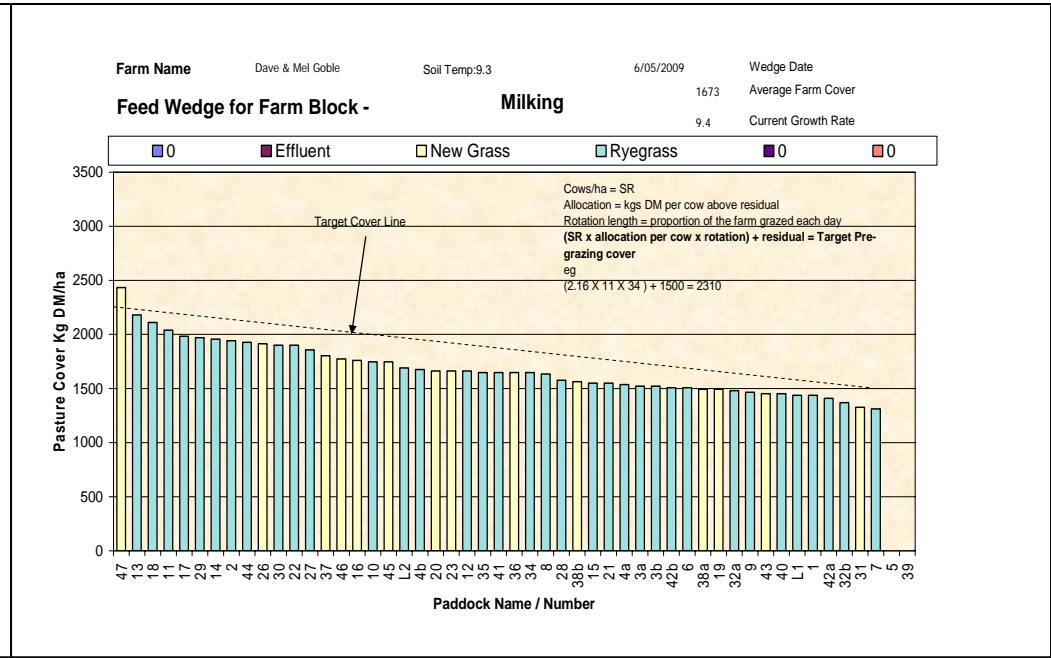
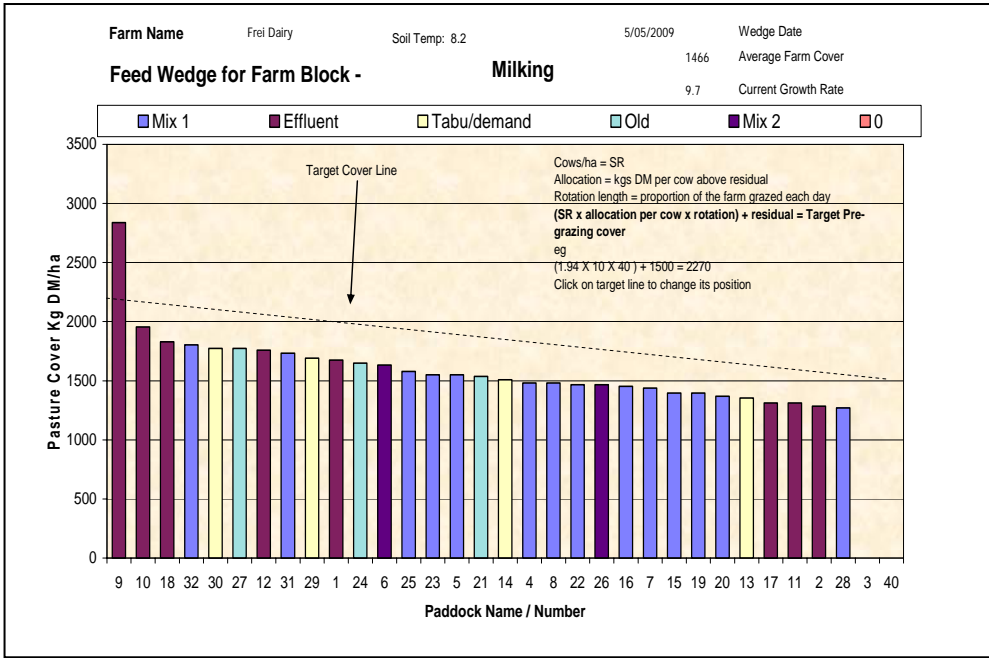


NB the Woodlands data is the long-term average from mature pastures at Woodlands measured using enclosure cages.



## Soil Temperature





## Pasture Quality

NOTE: We sample the paddocks immediately in front of the milkers, to height of 3.5cm (7 clicks on the rising plate meter). The RPM data in the table is the pre-grazing clicks recorded on the day of sampling.

## Eastern Southland

Description	Date	RPM	% prot	% Lipid	% SSS	% NDF	% ADF	OMD	MJME/ kg DM	%DM
Pdk 16	25Jun	13.8	24.3	3.9	15.4	49.8	28.2	80.6	11.8	16.7
Pdk 43	25 Jun	15.8	26.2	4.8	12.1	50.7	27.2	78.2	11.3	15.9
Pdk 43	22 Jul	18.8	24.8	4.4	14.1	52	26	78.6	11.5	16.0
Pdk 16	22 Jul	13.6	26.4	4.7	14.5	48.0	24.7	82.7	11.9	17.7
Pdk 43	5 Aug	13.1	26.1	5.3	15.5	44.0	24.0	80.3	11.5	15.1
Pdk 16	5 Aug	13.6	25.2	4.8	16.9	40.9	25.4	81.3	11.6	15.0
Pdk 16	19Aug	13.6	24.3	4.3	15.5	42.7	26.1	80.7	11.6	15.5
Pdk 50	19Aug	16.2	26.9	5.3	15.1	42.4	24.6	82	12	14.2
Pdk 52	2 Sep	16.0	23.3	4.9	16.1	43.1	24.4	80.1	11.6	22.0
Pdk 2	2 Sep	14.0	26.6	5.8	11.4	45.3	24.2	78.2	11.2	19.2
Pdk 1	16Sep	9.8	26.1	5.9	10.5	47.7	25.8	78	11.3	19.7
Pdk 7	16Sep	13.4	24.6	5.6	13.2	47.0	24.6	79.3	11.5	19.8
Pdk 47	30Sep	12.8	33.3	5.2	11.0	45.1	22.3	>85	>12.7	15.8
Pdk 64	30Sep	15.0	28.8	5.2	14.6	44.8	24.1	84.9	12.5	16.4
Pdk 57	14 Oct	14.0	30.3	6.1	12.5	43.7	24.2	82.0	11.8	18.5
Pdk 30	14 Oct	14.4	33.1	5.7	13.4	41.0	24.0	84.6	12.3	17.5
Pdk 43	28 Oct	17.2	25.6	4.9	15.3	46.4	25.0	82.8	12.1	18.0
Pdk 11	28 Oct	14.2	24.2	4.7	14.5	48.2	24.8	79.7	11.8	18.7
Pdk 46	11Nov	12.2	29.4	5.0	11.1	43.9	24.3	83.9	12.0	11.9
Pdk 52	11Nov	12.0	32.1	5.5	11.1	40.7	22.7	84.9	11.8	12.7
Pdk 2	25Nov	13.6	33.0	5.9	7.7	40.6	26.9	80.6	11.0	13.4
Pdk 11	25Nov	13.1	29.4	5.0	6.0	45.1	26.1	74.3	10.4	15.8
Pdk 69	9Dec	14.8	28.1	5.1	12.6	46.0	23.1	82.5	12.0	13.8
Pdk 7	9 Dec	12.3	26.1	4.9	14.9	44.3	23.3	82.0	12.1	14.5
Pdk 7	6 Jan	16.4	23.9	4.4	13.4	46.9	24.4	80.7	12.0	17.3
Pdk 2	6 Jan	17.8	28.1	5.1	12.9	42.5	24.1	82.4	11.8	16.3
Pdk 3	21 Jan	17.5	25.9	4.5	13.8	43.7	24.0	83.2	12.1	11.5
Pdk 12	21 Jan	16.0	22.9	3.7	12.2	50.4	26.3	78.9	11.7	14.7
Pdk 28	3 Feb	17.9	28.5	5.1	14.0	40.9	23.7	83.8	12.0	13.9
Pdk 34	3 Feb	15.7	24.2	4.4	14.8	47.8	26.2	82.0	11.9	16.5
	17 Feb									
	17 Feb									
Pdk 45	3 Mar	18.9	26.1	4.4	<1	52.8	24.8	78.8	10.7	13.0
Pdk 51	3 Mar	15.6	30.8	5.3	9.4	44.4	23.4	83.5	11.7	13.3
Pdk 9	17 Mar	18.4	27.3	5.3	14.4	40.4	23.9	82.4	11.8	12.5
Pdk 50	17 Mar	18.9	26.8	5.1	11.4	44.7	25.0	80.0	11.6	11.9
Pdk 57	31Mar	17.8	29.5	5.4	10.6	46.4	24.8	83.2	11.9	11.9
Pdk 67	31Mar	17.2	31.2	5.6	10.3	43.6	22.2	>85	12.2	11.7
Pdk 51	14 Apr	15.8	31.9	4.6	9.1	42.5	21.9	88.2	>12.7	14.3
Pdk 65	14 Apr	15.9	27.8	5.0	12.1	39.6	21.3	83.8	12.2	14.2
Pdk 30	28 Apr	17.7	29.3	5.7	12.8	43.6	21.6	>85	12.4	15.7
Pdk 68	28 Apr	15.7	27.6	5.2	12.9	44.1	24.7	82.7	11.9	15.1

## Central Southland

Description	Date	RPM	% prot	% Lipid	% SSS	% NDF	% ADF	OMD	MJME/kg DM	%DM
Pdk 6	25 Jun	12.2	31.2	5.6	11.6	44.9	21.9	>85	12.6	19.9
Pdk 26	25 Jun	9.8	28.6	5.2	14.2	44.1	24.4	81.3	12.0	19.6
Pdk 26	22 Jul	11.4	27.8	5.5	15.2	42.8	23.6	83.1	11.9	18.2
Pdk 6	22 Jul	13.0	27.0	5.3	14.3	45.6	23.4	82.4	12.1	19.9
Pdk 26	5 Aug	18.2	27.9	5.7	15.2	39.8	23.8	81.7	11.6	17.1
Pdk 6	5 Aug	13.6	32.4	5.9	14.4	37.4	22.3	>85	12.6	20.8
Pdk 21	19Aug	-	28.7	4.6	11.9	41.2	23.1	>85	12.3	19.3
Pdk 9	19Aug	11.6	30.1	5.1	13.1	41.1	22.1	>85	>12.7	21.8
Pdk 12	2 Sep	15.0	30.3	6.2	12.6	42.1	20.7	84.7	12.5	21.1
Pdk 3	2 Sep	15.5	25.2	6.0	17.5	40.0	21.0	>85	>12.7	21.9
Pdk 18	16Sep	18.4	29.6	5.4	19.7	45.7	24.5	81.7	11.7	19.3
Pdk 16	16Sep	18.0	28.1	5.8	13.3	43.4	22.5	84.1	12.2	19.7
Pdk 36	30Sep	10.3	22.1	4.9	17.1	48.1	23.4	82.9	12.2	21.1
Pdk 26	30Sep	8.8	28.2	5.6	14.9	44.9	22.2	>85	12.7	19.3
Pdk 19	14 Oct	15.8	20.3	4.4	24.1	37.9	22.1	>85	>12.7	22.5
Pdk 42	14 Oct	15.8	25.3	5.3	19.3	41.0	23.4	>85	>12.7	19.2
Pdk 46	28 Oct	16.8	23.2	5.0	18.4	36.2	23.1	83.2	11.9	18.9
Pdk 26	28 Oct	14.8	28.1	5.9	13.1	36.3	23.5	83.2	11.8	18.7
Pdk 18	11Nov	15.2	22.5	4.6	16.3	45.6	24.7	80.0	11.9	19.7
Pdk 43	11Nov	17.2	30.1	5.3	12.6	40.8	22.1	85.8	12.5	16.3
Pdk 33	25Nov	15.2	28.9	5.1	10.6	45.8	27.9	76.0	10.7	17.0
Pdk 8	25Nov	16.0	31.4	5.0	7.6	47.5	24.6	81.2	11.3	18.1
Pdk 46	9 Dec	*	24.3	4.5	17.4	44.6	24.1	83.9	12.4	18.2
Pdk 12	9 Dec	18.0	23.1	4.6	15.7	45.4	26.1	78.4	11.5	20.5
Pdk 42	6 Jan	19.9	21.8	4.1	17.9	43.2	24.9	84.4	12.4	18.3
Pdk 21	6 Jan	15.8	24.5	4.2	14.0	43.7	26.8	79.0	11.5	19.8
Pdk 15	21 Jan	14.9	29.9	5.1	13.9	41.0	22.2	>85	12.7	12.8
Pdk 19	21 Jan	11.0	23.9	4.3	15.9	45.2	25.1	81.9	12.1	13.8
Pdk 18	3 Feb	12.9	27.4	4.8	10.7	47.9	24.3	80.2	11.5	18.5
Pdk 30	3 Feb	14.3	28.8	4.7	13.4	42.6	22.7	84.6	12.2	18.1
Pdk 10	17Feb	14.5	24.2	4.7	15.3	44.1	24.6	82.3	11.9	18.9
Pdk 42	17Feb	15.3	25.6	4.7	16.9	39.1	23.5	84.9	12.2	19.8
Pdk 1	3 Mar	13.8	25.3	4.8	14.6	44.5	25.5	81.2	11.6	16.6
Pdk 5	3 Mar	14.6	28.8	5.7	14.6	40.8	22.7	>85	12.1	15.8
Pdk 4	17Mar	13.1	29.2	5.2	16.1	40.9	23.1	85.2	12.5	16.3
Pdk 10	17Mar	16.7	25.5	5.2	16.1	43.1	24.1	81.8	11.9	17.5
Pdk 6	31Mar	13.2	29.0	5.4	12.7	43.5	23.5	84.9	12.1	16.2
Pdk 16	31Mar	16.2	31.1	5.6	11.2	42.2	22.5	>85	12.0	14.0
Pdk 11	14Apr	11.7	28.5	4.9	12.8	40.7	23.0	86.3	12.5	17.9
Pdk 43	14Apr	14.8	28.3	5.1	14.6	40.1	21.1	90.6	>12.7	15.9
Pdk 5	28 Apr	11.6	27.0	5.6	16.6	40.2	22.0	>85	12.6	19.2
Pdk 38	28 Apr	12.7	26.9	5.3	15.8	43.8	22.9	>85	12.4	18.2



## Northern Southland

Description	Date	RPM	% prot	% Lipid	% SSS	% NDF	% ADF	OMD	MJME/kg DM	%DM
Pdk 18	2 Jul	9.4	25.8	4.9	15.7	44.0	22.8	84.3	12.3	18.4
Pdk 9	2 Jul	10.4	26.5	4.5	16.6	40.2	23.2	>85	12.4	15.0
Pdk 9	23 Jul	10.8	28.6	4.7	10.6	49.2	24.5	80.0	11.7	13.9
Pdk 18	23 Jul	9.4	23.7	4.5	16.6	46.5	25.1	81.2	11.7	15.0
Pdk 9	5 Aug	11.8	27.2	5.2	18.2	39.7	22.8	84.4	12.3	18.8
Pdk 18	20Aug	9.4	23.6	4.7	17.6	42.9	23.1	85	12.6	24.8
Pdk 14	20Aug	10	26.3	5.6	20.5	33.1	21.1	>85	>12.7	21.7
Pdk 4	3 Sep	12.8	30.0	5.7	8.9	49.1	22.5	78.7	11.7	19.5
Pdk 32	3 Sep	9.2	23.7	4.8	16.7	41.4	22.4	84.3	12.2	18.5
Pdk 12	17Sep	9.2	33.8	5.9	12.0	36.6	22.4	>85	12.3	14.2*
Pdk 8	17Sep	11.0	29.8	5.5	13.2	40.4	22.6	84.7	12.1	14.6*
Pdk 25	1 Oct	11.0	25.3	5.2	15.6	42.8	24.4	82.8	12.1	19.0
Pdk 18	15 Oct	11.6	24.8	5.0	19.7	42.8	22.4	>85	>12.7	20.0
Pdk 8	15 Oct	13.4	31.1	5.2	15.5	37.7	22.5	>85	>12.7	16.5
Pdk 21	29 Oct	13.2	32.2	5.8	11.9	37.9	24.0	82.9	11.8	16.0
Pdk 17	29 Oct	13.8	28.1	4.8	14.9	35.8	24.4	82.8	11.8	15.9
Pdk 9	12Nov	13.6	28.9	3.9	13.3	39.9	24.2	84.8	12.4	17.9
Pdk 6	12Nov	15.2	28.1	5.0	13.1	39.5	25.2	83.2	12.0	17.8
Pdk 26	26Nov	12.6	31.6	4.5	12.2	38.1	24.1	83.9	12.0	15.9
Pdk 2	26Nov	14.4	26.6	4.7	14.2	41.8	25.5	78.6	11.3	17.3
Pdk 5	10Dec	15.2	19.3	3.9	16.4	47.5	27.4	73.5	10.5	17.8
Pdk 29	10Dec	24.6	13.9	3.7	13.4	59.1	32.7	65.7	10.0	21.1
Pdk 32	7 Jan	12.6	20.0	3.7	13.0	48.8	28.6	71.9	10.5	22.7
Pdk 25	7 Jan	11.8	22.6	4.0	12.4	47.9	26.4	74.0	10.8	22.9
Pdk 27	21 Jan	13.8	24.8	3.9	13.6	44.4	25.8	79.2	11.4	18.1
Pdk 18	21 Jan	15.2	21.1	3.5	17.2	45.8	27.2	78.7	11.2	20.8
Pdk 31	4 Feb	11.1	23.1	4.2	15.6	45.0	28.0	74.1	10.5	29.8
Pdk 30	4 Feb	12.2	26.6	4.3	11.0	45.0	26.5	79.2	11.2	14.1
Pdk 4	18Feb	8.6	18.1	3.7	12.3	51.1	29.8	66.9	9.8	30.2
Pdk 8	18Feb	9.4	19.5	3.9	15.5	49.4	27.2	76.2	11.1	25.9
Pdk 11	4 Mar	9.2	24.5	4.3	18.6	51.1	24.4	83.5	12.6	18.8
Pdk 15	4 Mar	9.9	23.8	11.1	18.1	47.0	26.4	79.9	11.8	21.9
Pdk 6	18Mar	10.5	24.9	5.1	12.5	45.8	25.8	78.3	11.0	13.5
Pdk 40	18Mar	11.6	27.6	5.2	11.4	36.2	23.8	82.4	11.5	12.2
Pdk 22	1Apr	12.2	27.7	4.3	11.5	44.6	23.6	>85	12.5	15.7
Pdk 17	1Apr	11.1	25.1	4.6	15.2	44.8	23.7	84	12.3	17.2
Pdk 40	15 Apr	9.3	29.8	4.6	10.3	42.2	23.5	84.2	11.8	12.8
Pdk 50	15 Apr	15.0	28.2	4.7	12.4	44.1	24.3	83.9	11.9	13.1
Pdk 22	29 Apr	10.7	25.1	5.0	14.6	42.0	24.0	82.6	12.0	17.6
Pdk 28	29 Apr	8.5	24.8	4.5	14.0	45.1	24.4	81.8	12.0	17.9

- \* Pasture sample collected in wet conditions