

# Southland Monitor Farm Project

## Weekly Update – 29 October 08

### General Comments

Soil temperatures this week were very much dependent on the day they were taken. Temperatures recorded on Tuesday were higher than those recorded on Wednesday. On average they are very similar to this time last year. Growth rate fell on 2 farms and increased on 2 farms this week so we are definitely not in a position of predictable growth. Growth across the region was between 35 and 66 kg DM/ha/day which was very similar to last week. Several farms are continuing to apply N behind the cows. The Central and West Otago farms have areas shut for conservation. Two paddocks were topped on the West Otago farm. Milk production is holding well with all the monitor farms producing at least 2 kg MS/cow/day.

Results from pasture samples collected 2 weeks ago show that pasture quality is remaining high. The range in Metabolisable energy was from 11.8 to 12.7 MJ/kg DM. Only one of the samples was below ME 12. Crude protein concentration was more variable between the farms. The highest average concentrations were measured on the Eastern Southland and West Otago farms. Interestingly the farm with the lowest crude protein concentrations was the Central Southland farm which has not applied any N since mid August. NDF levels are remaining in a good range, the challenge will be to keep them this low over the next few weeks as seed head development advances.

Tips for the week.

Maintaining consistent and even post grazing residuals over the next 3 weeks is critical to ensuring high quality pasture in November and December. Seed head formation has been initiated therefore you have one opportunity now to eat, or mow if you have to, the seed head before pasture quality starts to decline. Weekly farm walks are important to check residuals and make timely decisions on conservation.

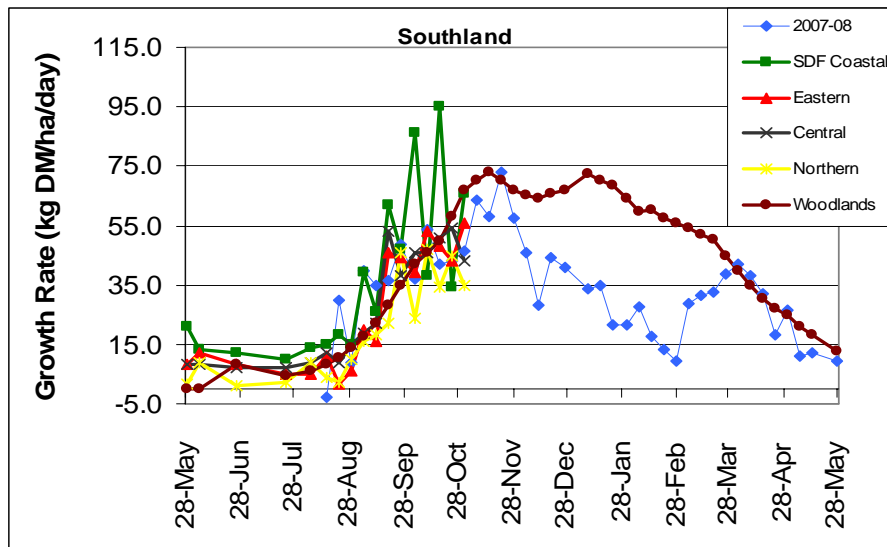
### Telford Summary

Cows are eating everything we have on farm now. The cows have lifted production again following an embarrassing drop in production following a few changes we put in place. Hopefully things are back on track now with mating upon us. Cold weather is not helping some sunshine and warm days and the cows would loose their coats and be a lot happier.

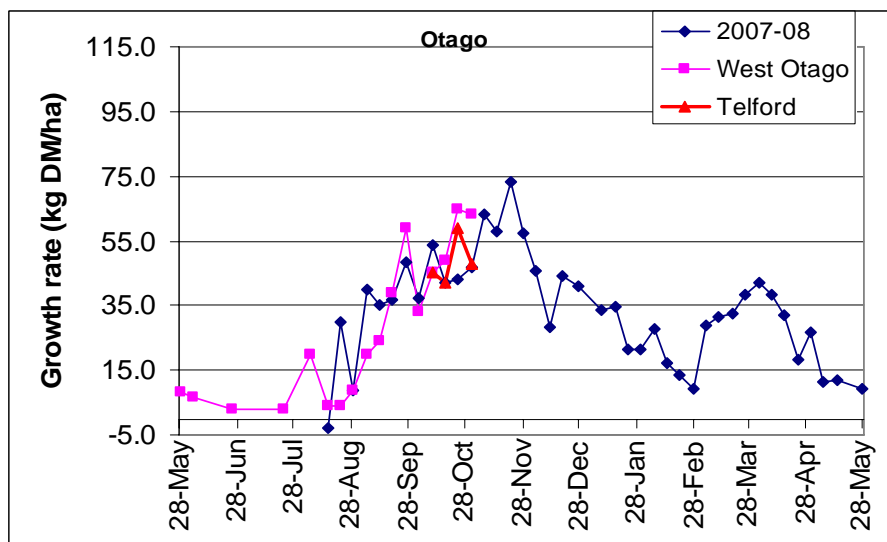
### Farm Summary

	Demo Farm	Eastern	Central	Northern	West Otago	Telford NEW
Average cover (kg DM/ha)	2294	2089	2495	1836	2583	2030
Rotation length (days)	22	25	27	26	20	22
Percentage in milk	96	98	98	100	97	100
Stocking rate	2.75	3.34	2.75	2.5	2.8	3.3
Milksolids kg/cow	1.85	2.03	2.25	2.14	2.27	1.77
Milksolids kg/ha	5.0	6.4	5.0	5.4	5.1	5.6
N (kg/ha)	48	22	30	10	10	55
Supplement (kg/cow/day)	0	1.1	1	0	0	1
Soil temperature (°C)	9.7	12.1	13.2	10.5	11.1	10.5
Growth Rate (kg DM/day)	66	56	43	35	63	48
Rainfall	-	22	12	11	14	8
Comments						

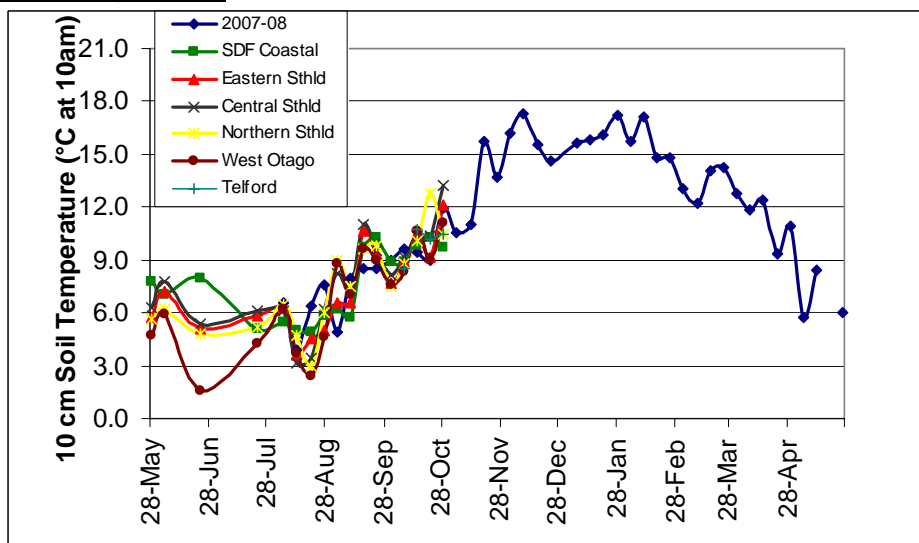
## Pasture Growth Rates



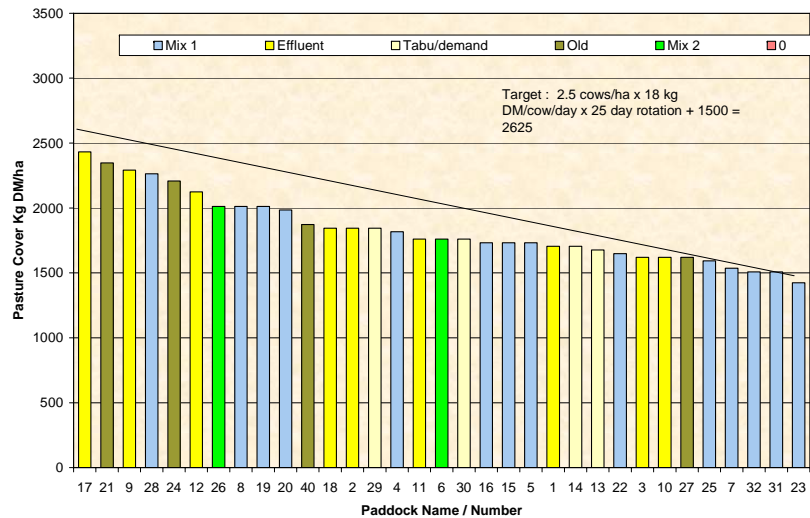
NB the Woodlands data is the long-term average from mature pastures at Woodlands measured using enclosure cages.



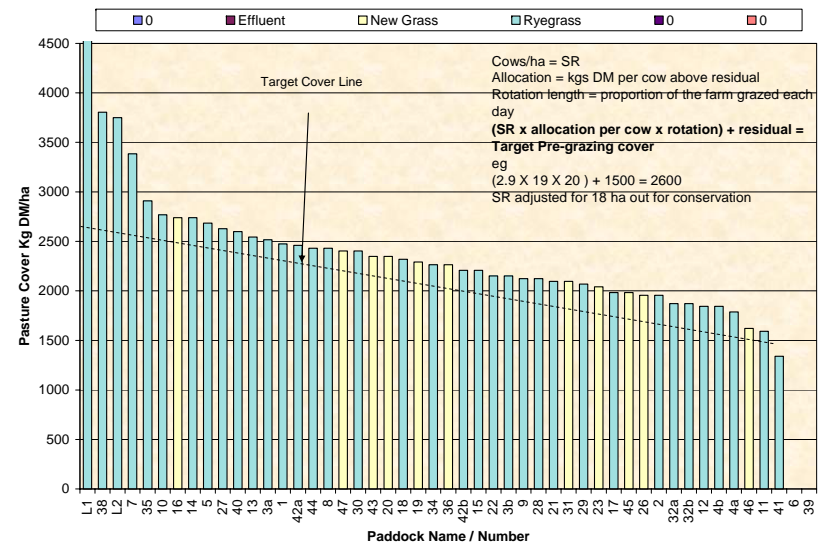
## Soil Temperature



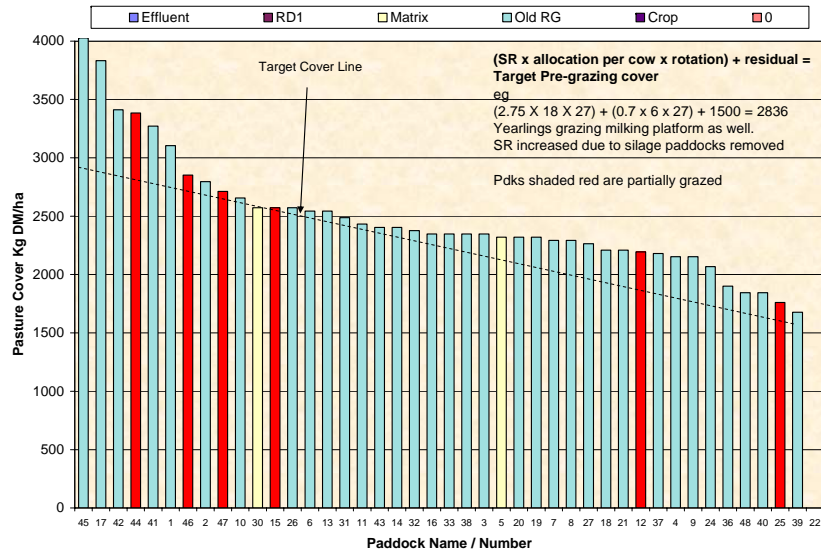
**Farm Name** Frei Dairy **Soil Temp:** 10.5 **Wedge Date** 29/10/2008  
**Feed Wedge for Farm Block - Milking**  
 1836 Average Farm Cover  
 34.5 Current Growth Rate



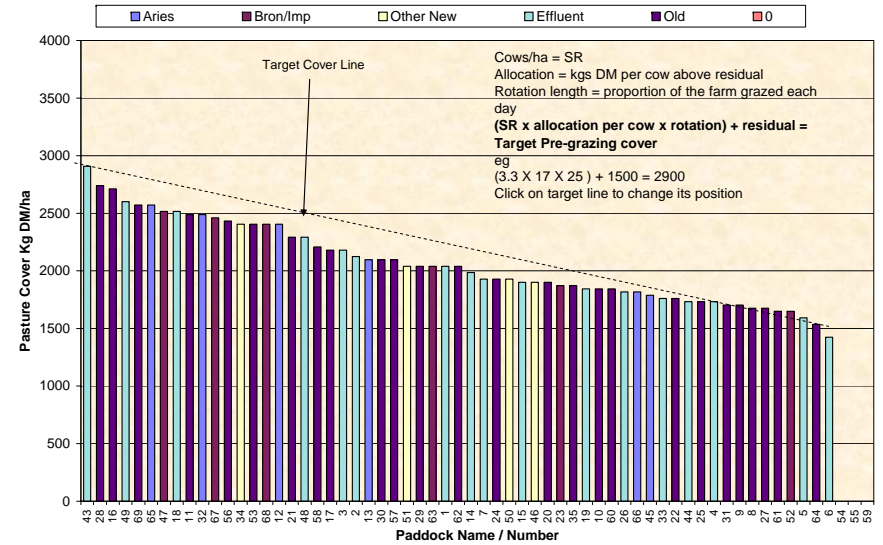
**Farm Name** Dave & Mel Goble **Soil Temp:** 11.1 **Wedge Date** 29/10/2008  
**Feed Wedge for Farm Block - Milking**  
 2583 Average Farm Cover  
 63.4 Current Growth Rate



**Farm Name** George & Jose van der Poel **Soil Temperature:** 13.2 **Wedge Date** 28/10/2008  
**Feed Wedge for Farm Block - Milking**  
 2495 Average Farm Cover  
 42.7 Current Growth Rate



**Farm Name** Kevin & Debbie Hall **Soil Temp:** 12.1 **Wedge Date** 28/10/2008  
**Feed Wedge for Farm Block - Milking**  
 2089 Average Farm Cover  
 56.2 Current Growth Rate





## West Otago

Description	Date	RPM	% prot	% Lipid	% SSS	% NDF	% ADF	OMD	MJME/kg DM	%DM
Pdk 14	2 Jul	11.8	27.1	5.0	10.6	48.6	25.2	79.1	11.5	21.1
Pdk 26	2 Jul	14.2	27.4	5.2	13.3	43.3	21.5	84.0	12.4	20.7
Pdk 14	23 Jul	12.4	28.8	5.3	13.5	43.3	25.4	80.2	11.5	15.8
Pdk 26	23 Jul	15.2	30.5	5.4	11.3	44.7	23.5	82.8	11.8	14.2
Pdk 14	5 Aug	13.4	29.0	5.4	13.0	45.3	23.9	79.6	11.4	17.0
Pdk 26	5 Aug	18.2	29.1	5.6	12.9	41.5	24.1	81.5	11.7	15.9
Pdk 14	20Aug	13.4	25.6	4.8	15.2	43.7	25	81.5	11.9	21.2
Pdk 42	20Aug	23.0	22.1	4.8	17.7	44.4	22.2	>85	>12.7	17.3
Pdk 17	3 Sep	14.8	28.3	5.5	10.2	46.2	24.9	77.8	11.1	16.3
Pdk 42	3 Sep	11.3	22.3	5.4	17.4	43.4	21.3	>85	>12.7	18.6
Pdk 27	17Sep	14.2	29.4	5.9	12.0	44.6	23.5	84	12.3	19.8
Pdk 12	17Sep	13.7	29.6	5.7	11.5	47.1	23.4	83.3	12.1	18.9
Pdk 35	1 Oct	13.0	32.1	6.0	14.6	38.2	21.4	>85	12.6	14.2*
Pdk 2	1 Oct	14.6	30.4	6.3	14.2	40.0	20.9	>85	12.6	17.1
Pdk 27	15 Oct		30.5	5.8	14.3	38.7	23.3	>85	>12.7	19.0
Pdk 45	15 Oct		29.9	6.5	14.7	36.9	22.2	>85	>12.7	14.3

## Northern Southland

Description	Date	RPM	% prot	% Lipid	% SSS	% NDF	% ADF	OMD	MJME/kg DM	%DM
Pdk 18	2 Jul	9.4	25.8	4.9	15.7	44.0	22.8	84.3	12.3	18.4
Pdk 9	2 Jul	10.4	26.5	4.5	16.6	40.2	23.2	>85	12.4	15.0
Pdk 9	23 Jul	10.8	28.6	4.7	10.6	49.2	24.5	80.0	11.7	13.9
Pdk 18	23 Jul	9.4	23.7	4.5	16.6	46.5	25.1	81.2	11.7	15.0
Pdk 9	5 Aug	11.8	27.2	5.2	18.2	39.7	22.8	84.4	12.3	18.8
Pdk 18	20Aug	9.4	23.6	4.7	17.6	42.9	23.1	85	12.6	24.8
Pdk 14	20Aug	10	26.3	5.6	20.5	33.1	21.1	>85	>12.7	21.7
Pdk 4	3 Sep	12.8	30.0	5.7	8.9	49.1	22.5	78.7	11.7	19.5
Pdk 32	3 Sep	9.2	23.7	4.8	16.7	41.4	22.4	84.3	12.2	18.5
Pdk 12	17Sep	9.2	33.8	5.9	12.0	36.6	22.4	>85	12.3	14.2*
Pdk 8	17Sep	11.0	29.8	5.5	13.2	40.4	22.6	84.7	12.1	14.6*
Pdk 25	1 Oct	11.0	25.3	5.2	15.6	42.8	24.4	82.8	12.1	19.0
Pdk 18	15 Oct		24.8	5.0	19.7	42.8	22.4	>85	>12.7	20.0
Pdk 8	15 Oct		31.1	5.2	15.5	37.7	22.5	>85	>12.7	16.5

- \* Pasture sample collected in wet conditions

# Southland Monitor Farm Project

## Weekly Update – 22 October 08

### General Comments

Soil temperatures were more variable this week. Northern Southland saw the largest change with an increase to 12.8. The trend in soil temperature is very similar to last year. After phenomenal growth on the demonstration farm last week the lowest growth of all farms was recorded there this week. Growth across the region was between 34 and 65 kg DM/ha/day. Several farms are continuing to apply N behind the cows. The Central and West Otago farms have areas shut for conservation while the wedges for the Eastern and Northern farms show that growth is not quite meeting demand. Milk production is holding well with all the monitor farms producing at least 2 kg MS/cow/day.

### Tips for the week.

With the silage season upon us it is timely to remember that it is primarily a tool to control excess pasture and keep its quality high on as much of the milking platform as possible. Only a true surplus should go into silage. The herd gets first priority. With high urea prices it is probably timely to reassess your Nitrogen usage.

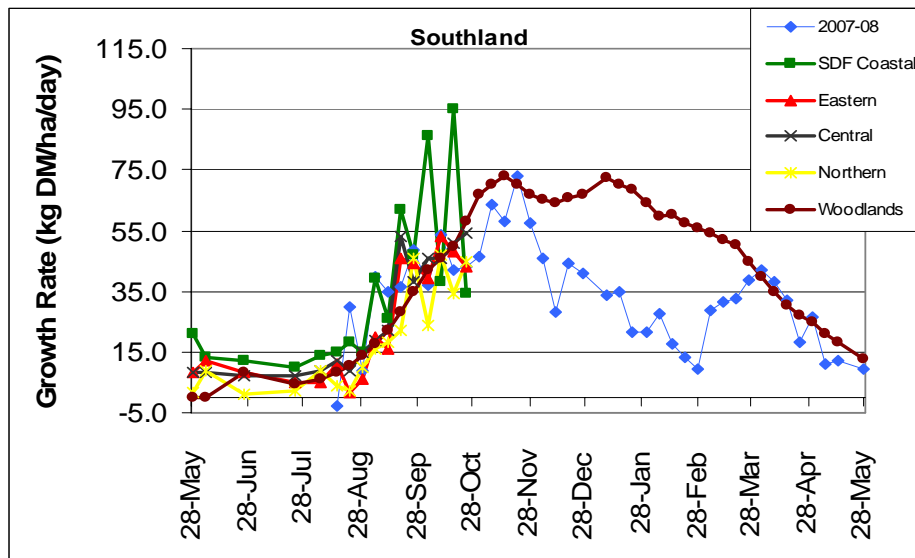
### Telford Summary

More balage has been removed off 10ha, which completes our pasture management, cows should be able to consume everything we have on farm now. The cows have flat lined production at 1.6kgMS/cow/day which is very disappointing for us. We will be going back to split herd and concentrating on fully feeding cows on high quality, but maintaining a 1500 residual, proliq has also been added back into the diet. CIDR's are going in tomorrow to non cycling cows.

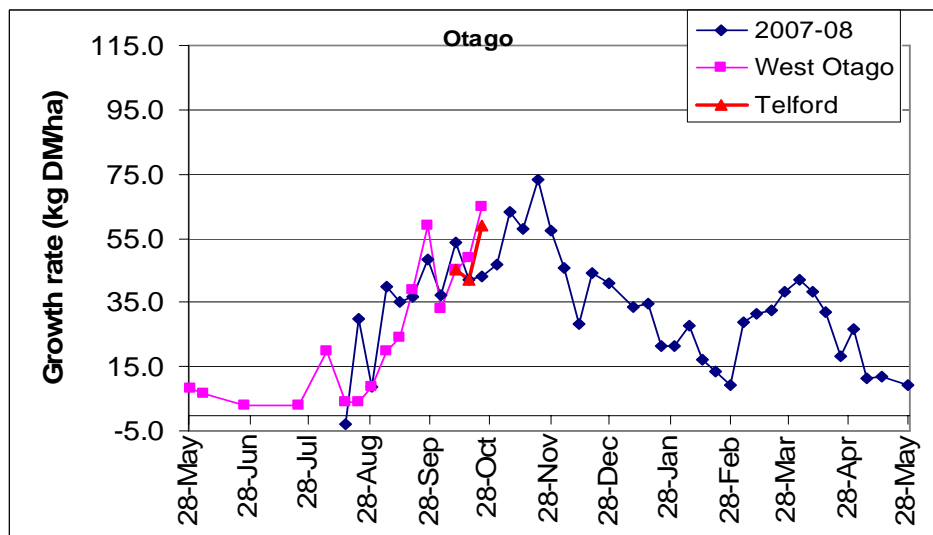
### Farm Summary

	Demo Farm	Eastern	Central	Northern	West Otago	Telford <b>NEW</b>
Average cover (kg DM/ha)	2144	1992	2456	1840	2456	1950
Rotation length (days)	22	26	28	25	20	20
Percentage in milk	93	97	96	100	93	99
Stocking rate	2.75	3.36	3.05	2.5	2.5	3.3
Milksolids kg/cow	1.80	2.03	2.25	2.11	2.21	1.66
Milksolids kg/ha	4.6	6.4	5.0	5.3	4.8	5.3
N (kg/ha)	48	22	30	10	10	80
Supplement (kg/cow/day)	0	1	1	0	1	1.3
Soil temperature (°C)	10.3	9.2	10.4	12.8	9.1	10.2
Growth Rate (kg DM/day)	34	43	54	45	65	59
Rainfall	16	20	14	8	6	6
Comments						

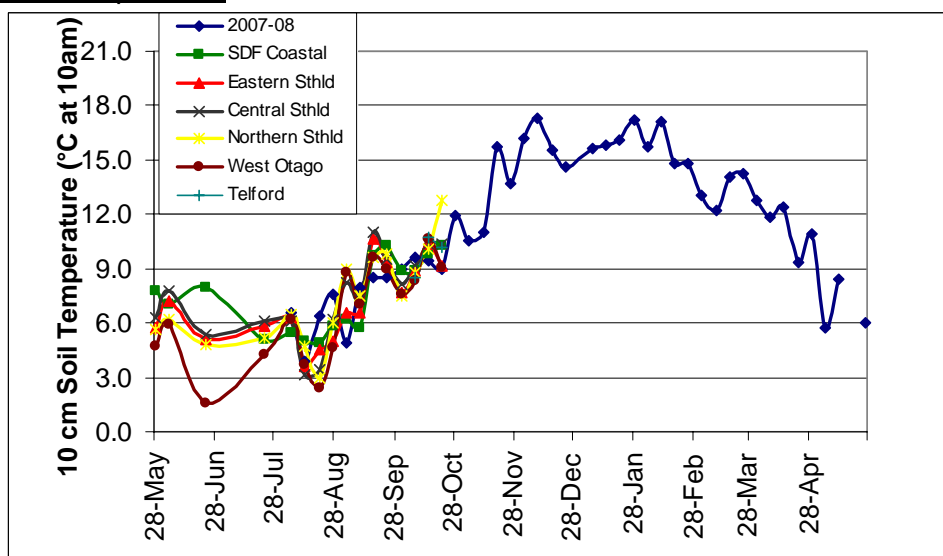
## Pasture Growth Rates

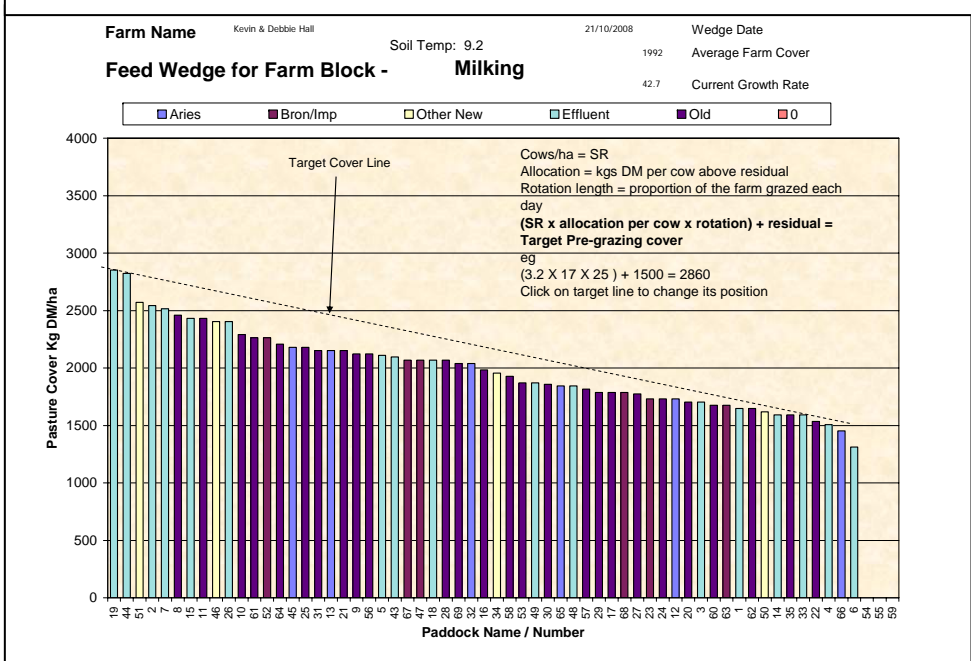
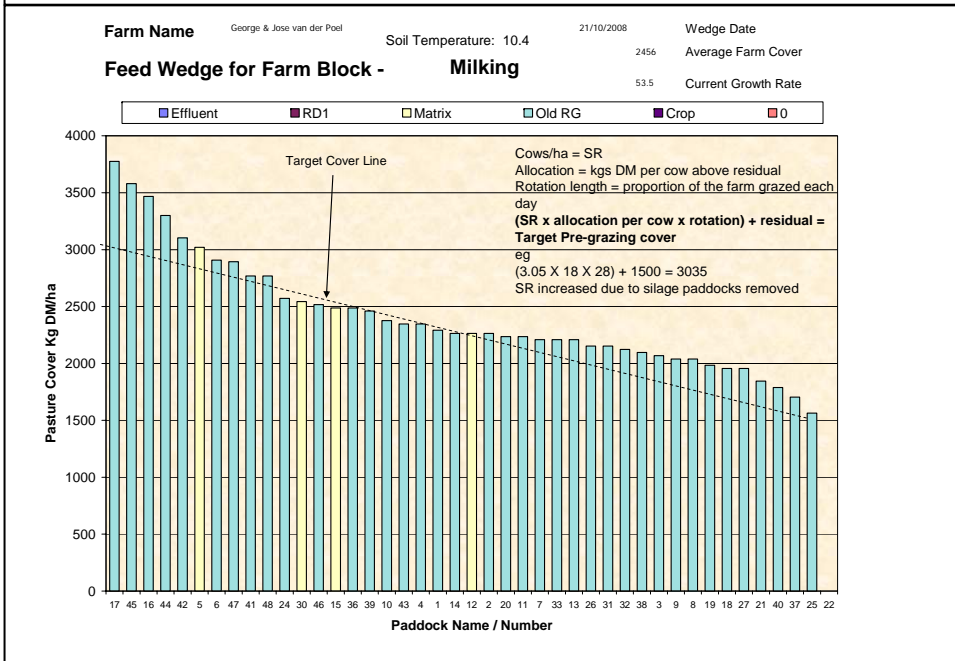
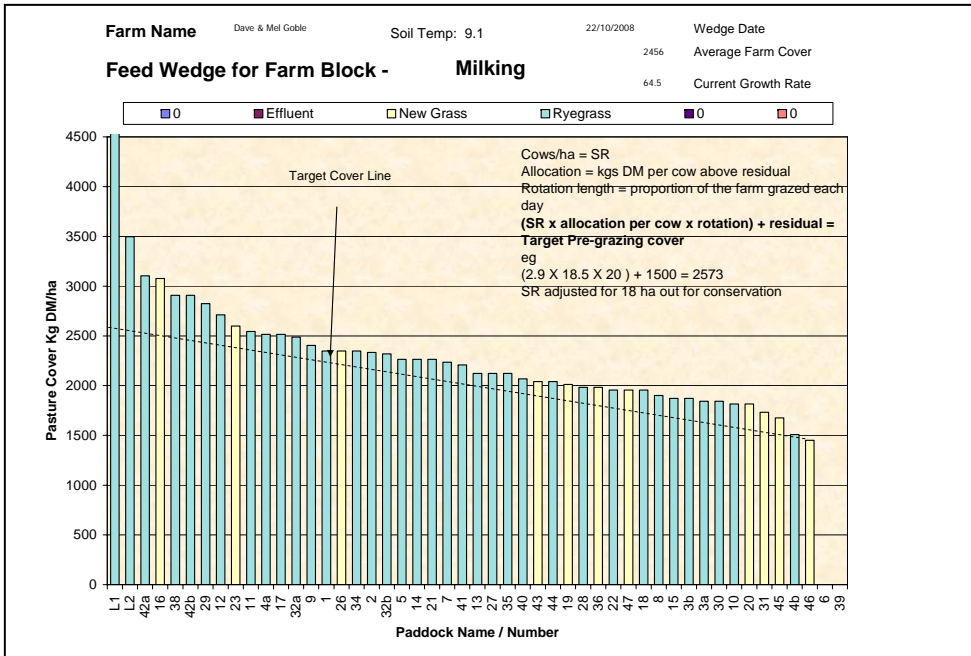
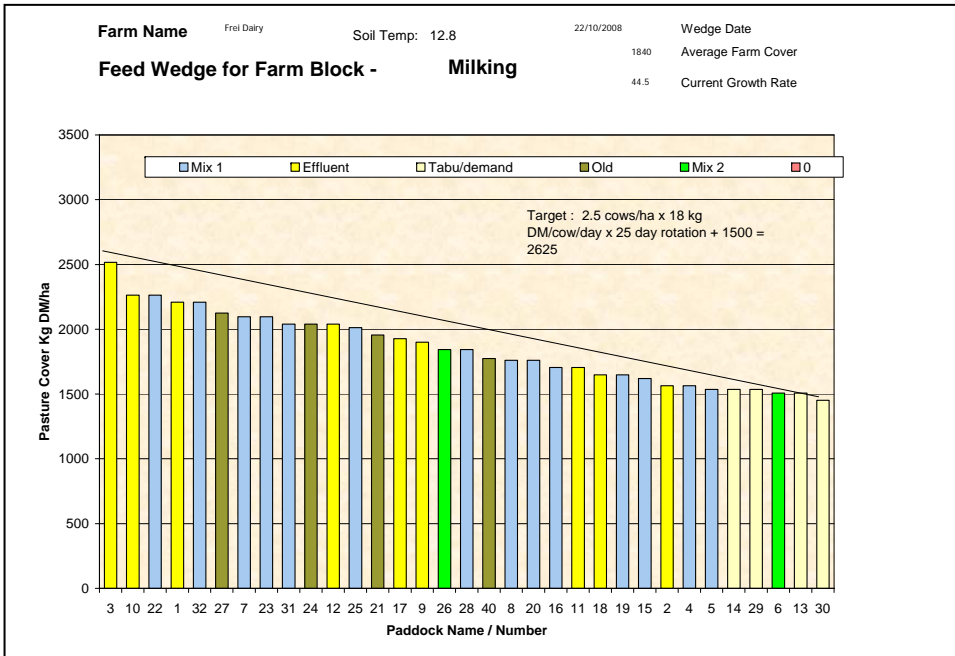


NB the Woodlands data is the long-term average from mature pastures at Woodlands measured using enclosure cages.



## Soil Temperature







## West Otago

Description	Date	RPM	% prot	% Lipid	% SSS	% NDF	% ADF	OMD	MJME/kg DM	%DM
Pdk 14	2 Jul	11.8	27.1	5.0	10.6	48.6	25.2	79.1	11.5	21.1
Pdk 26	2 Jul	14.2	27.4	5.2	13.3	43.3	21.5	84.0	12.4	20.7
Pdk 14	23 Jul	12.4	28.8	5.3	13.5	43.3	25.4	80.2	11.5	15.8
Pdk 26	23 Jul	15.2	30.5	5.4	11.3	44.7	23.5	82.8	11.8	14.2
Pdk 14	5 Aug	13.4	29.0	5.4	13.0	45.3	23.9	79.6	11.4	17.0
Pdk 26	5 Aug	18.2	29.1	5.6	12.9	41.5	24.1	81.5	11.7	15.9
Pdk 14	20Aug	13.4	25.6	4.8	15.2	43.7	25	81.5	11.9	21.2
Pdk 42	20Aug	23.0	22.1	4.8	17.7	44.4	22.2	>85	>12.7	17.3
Pdk 17	3 Sep	14.8	28.3	5.5	10.2	46.2	24.9	77.8	11.1	16.3
Pdk 42	3 Sep	11.3	22.3	5.4	17.4	43.4	21.3	>85	>12.7	18.6
Pdk 27	17Sep	14.2	29.4	5.9	12.0	44.6	23.5	84	12.3	19.8
Pdk 12	17Sep	13.7	29.6	5.7	11.5	47.1	23.4	83.3	12.1	18.9
Pdk 35	1 Oct	13.0	32.1	6.0	14.6	38.2	21.4	>85	12.6	14.2*
Pdk 2	1 Oct	14.6	30.4	6.3	14.2	40.0	20.9	>85	12.6	17.1

## Northern Southland

Description	Date	RPM	% prot	% Lipid	% SSS	% NDF	% ADF	OMD	MJME/kg DM	%DM
Pdk 18	2 Jul	9.4	25.8	4.9	15.7	44.0	22.8	84.3	12.3	18.4
Pdk 9	2 Jul	10.4	26.5	4.5	16.6	40.2	23.2	>85	12.4	15.0
Pdk 9	23 Jul	10.8	28.6	4.7	10.6	49.2	24.5	80.0	11.7	13.9
Pdk 18	23 Jul	9.4	23.7	4.5	16.6	46.5	25.1	81.2	11.7	15.0
Pdk 9	5 Aug	11.8	27.2	5.2	18.2	39.7	22.8	84.4	12.3	18.8
Pdk 18	20Aug	9.4	23.6	4.7	17.6	42.9	23.1	85	12.6	24.8
Pdk 14	20Aug	10	26.3	5.6	20.5	33.1	21.1	>85	>12.7	21.7
Pdk 4	3 Sep	12.8	30.0	5.7	8.9	49.1	22.5	78.7	11.7	19.5
Pdk 32	3 Sep	9.2	23.7	4.8	16.7	41.4	22.4	84.3	12.2	18.5
Pdk 12	17Sep	9.2	33.8	5.9	12.0	36.6	22.4	>85	12.3	14.2*
Pdk 8	17Sep	11.0	29.8	5.5	13.2	40.4	22.6	84.7	12.1	14.6*
Pdk 25	1 Oct	11.0	25.3	5.2	15.6	42.8	24.4	82.8	12.1	19.0

- \* Pasture sample collected in wet conditions

# Southland Monitor Farm Project

## Weekly Update – 15 October 08

### General Comments

Soil temperatures rose again this week with all regions recording temperatures above 10 °C. Temperatures are now above this time last year. The Demonstration farm had phenomenal growth this week, recording 95 kg DM/ha/day. They attribute the high growth rate this week to a likely underestimate last week. The most likely situation was that last week, due to staff sickness, a proportion of the farm had to be walked by a person and plate meter not normally utilised on that particular part of the farm. This highlights the importance of using the same person, with the same platemeter, when carrying out the weekly farm walk, to ensure consistency of platemeter readings. Average growth for the last 2 weeks on the demonstration farm was 66 kg DM/ha/day. Growth in the other regions was between 34 and 50 kg DM/ha/day. As was seen last year growth on the Northern farm is slower than that measured elsewhere. Likely reasons for this are the minimal use of fertiliser N and the lower average pasture cover on the farm. This farm also has a number of areas that haven't recovered from last years drought which is affecting growth in particular paddocks. This week the Northern farm applied lime and sulphate of ammonia (18 kg N/ha) to about one third of the farm. An additional 5 paddocks were treated with ProGibb. The composted solid waste from the wintering shed was also applied to a quarter of the farm. The West Otago farm has 18 ha shut for conservation and the Demonstration farm has 10 paddocks.

### Tips for the week.

When selecting bulls for your herd and yearling heifers ensure that they are vaccinated for Lepto, are BVD and EBL free and are fertility tested. Make sure you have enough bulls for your requirements. You will need one bull for every 30 cows not in calf when the bulls go out.

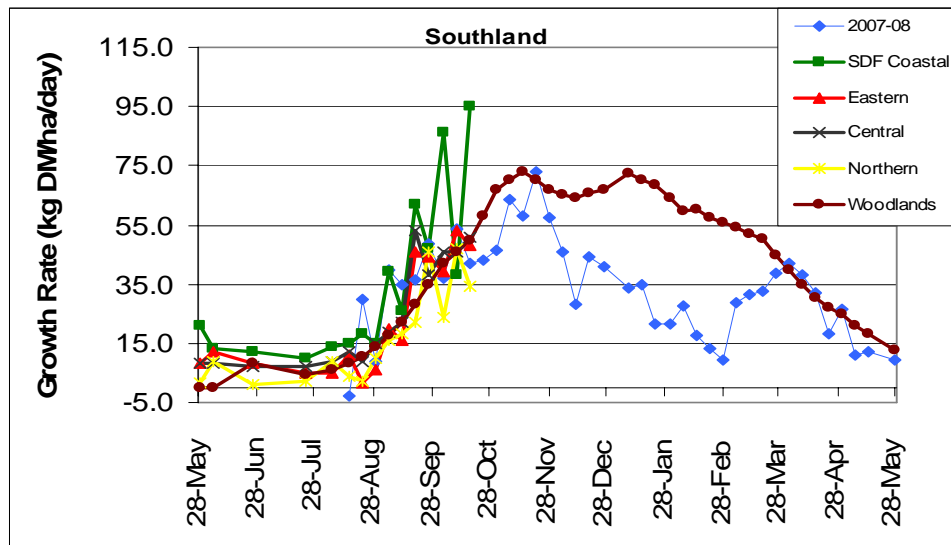
### Telford Summary

After a long hold up due to the wet paddock conditions the balage has been removed off 15ha, another 15ha is waiting to be cut asap. Cows have dropped production by going back into one herd and going onto very high pasture covers and being made to pull them down to 1500 residuals. We will split herd again to increase condition on light cows leading up to mating and to improve cow production. We have dropped more high cover paddocks and will be chasing higher quality feed and adding proliq back on offer to the cows.

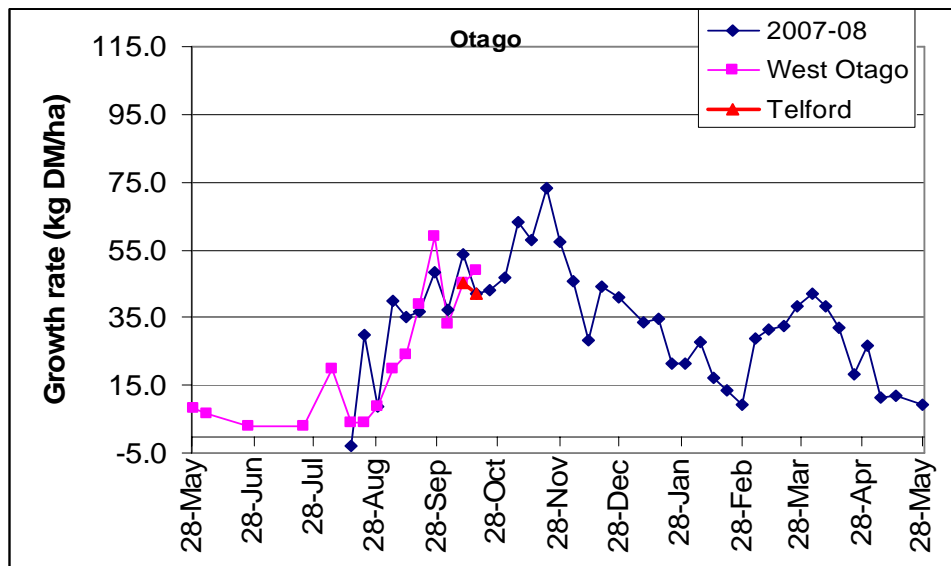
### Farm Summary

	Demo Farm	Eastern	Central	Northern	West Otago	Telford NEW
Average cover (kg DM/ha)	2382	2000	2349	1747	2284	2063
Rotation length (days)	21	25	31	21	20	22
Percentage in milk	92	97	96	100	90	99
Stocking rate	2.7	3.3	2.5	2.5	2.5	3.3
Milksolids kg/cow	1.85	2.01	2.23	2.15	2.19	1.63
Milksolids kg/ha	4.6	6.4	4.8	5.4	4.6	5.3
N (kg/ha)	34	22	30	10	10	37
Supplement (kg/cow/day)	0	0.5	1	0	1.5	0
Soil temperature (°C)	9.8	10.4	10.8	10.1	10.6	10.7
Growth Rate (kg DM/day)	95	48	51	34	49	42
Rainfall	10	14	12	6	8	6
Comments						

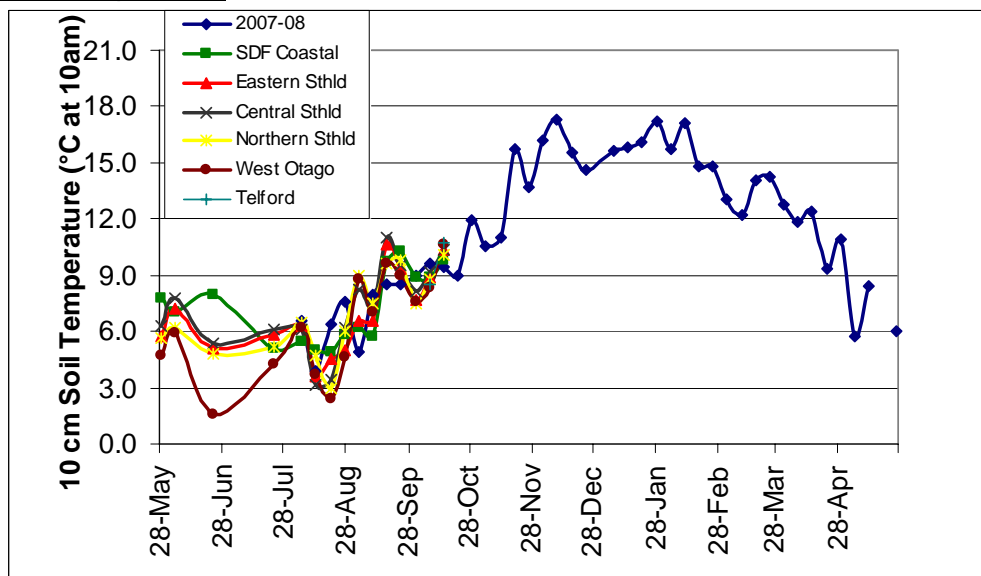
## Pasture Growth Rates



NB the Woodlands data is the long-term average from mature pastures at Woodlands measured using enclosure cages.

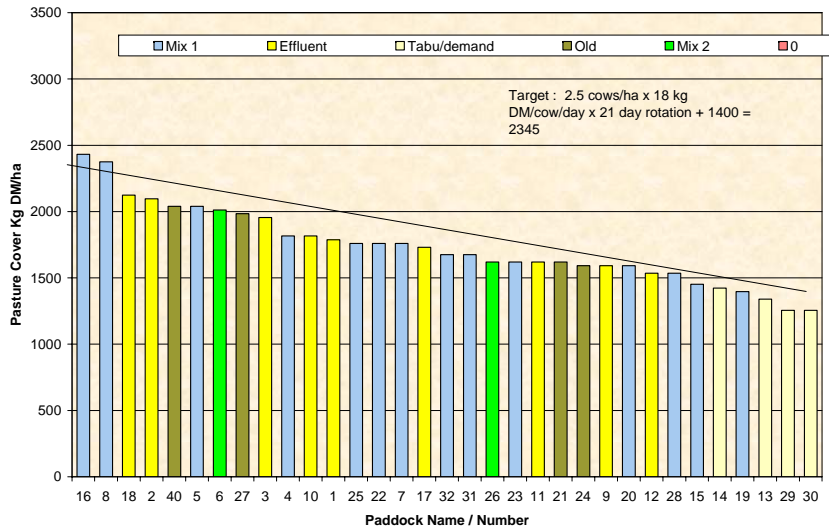


## Soil Temperature



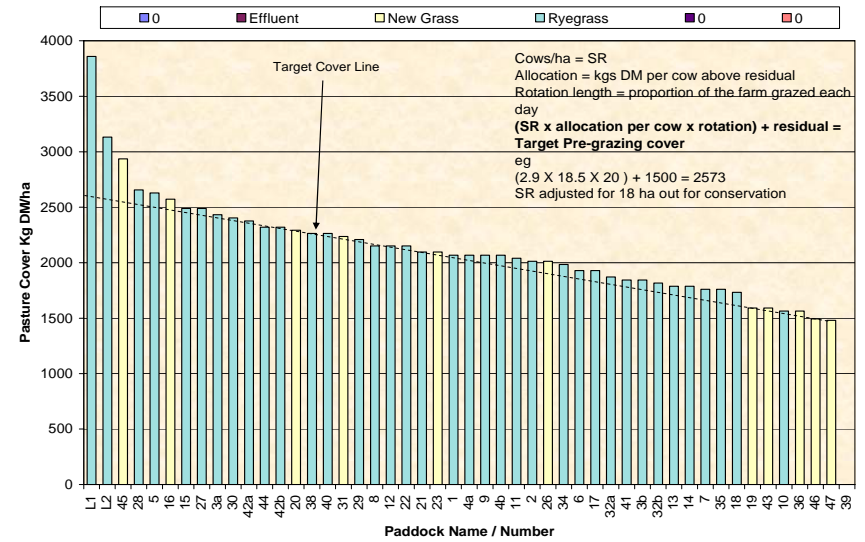
Farm Name: Frei Dairy  
 Soil Temp: 10.1  
 15/10/2008  
 Wedge Date: 1747  
 Average Farm Cover: 33.7  
 Current Growth Rate

**Feed Wedge for Farm Block - Milking**



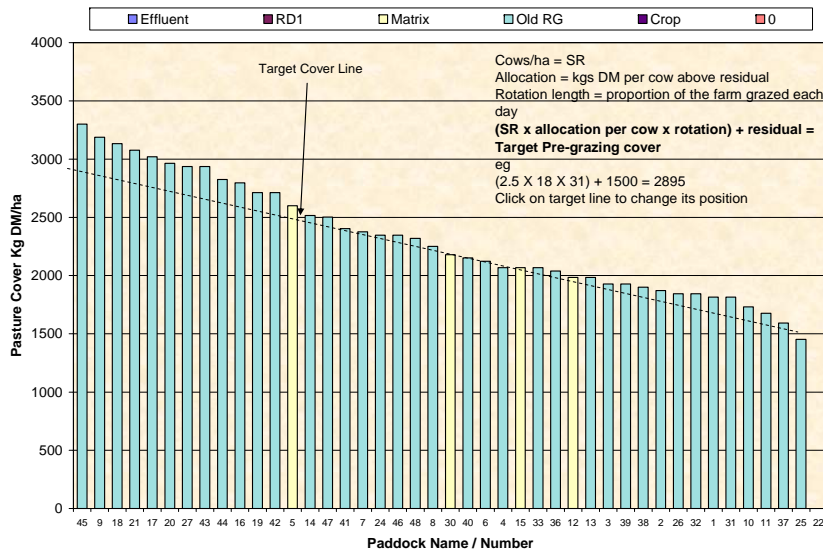
Farm Name: Dave & Mel Goble  
 Soil Temp: 10.6  
 15/10/2008  
 Wedge Date: 2284  
 Average Farm Cover: 49.1  
 Current Growth Rate

**Feed Wedge for Farm Block - Milking**



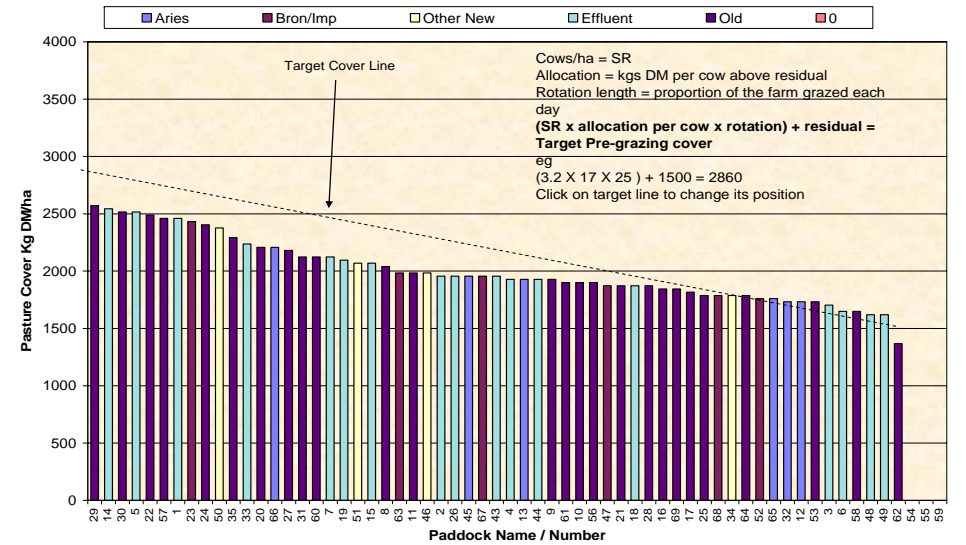
Farm Name: George & Jose van der Poel  
 Soil Temperature: 10.8  
 14/10/2008  
 Wedge Date: 2349  
 Average Farm Cover: 50.8  
 Current Growth Rate

**Feed Wedge for Farm Block - Milking**



Farm Name: Kevin & Debbie Hall  
 Soil Temp: 10.4  
 14/10/2008  
 Wedge Date: 2000  
 Average Farm Cover: 48.1  
 Current Growth Rate

**Feed Wedge for Farm Block - Milking**





## West Otago

Description	Date	RPM	% prot	% Lipid	% SSS	% NDF	% ADF	OMD	MJME/kg DM	%DM
Pdk 14	2 Jul	11.8	27.1	5.0	10.6	48.6	25.2	79.1	11.5	21.1
Pdk 26	2 Jul	14.2	27.4	5.2	13.3	43.3	21.5	84.0	12.4	20.7
Pdk 14	23 Jul	12.4	28.8	5.3	13.5	43.3	25.4	80.2	11.5	15.8
Pdk 26	23 Jul	15.2	30.5	5.4	11.3	44.7	23.5	82.8	11.8	14.2
Pdk 14	5 Aug	13.4	29.0	5.4	13.0	45.3	23.9	79.6	11.4	17.0
Pdk 26	5 Aug	18.2	29.1	5.6	12.9	41.5	24.1	81.5	11.7	15.9
Pdk 14	20Aug	13.4	25.6	4.8	15.2	43.7	25	81.5	11.9	21.2
Pdk 42	20Aug	23.0	22.1	4.8	17.7	44.4	22.2	>85	>12.7	17.3
Pdk 17	3 Sep	14.8	28.3	5.5	10.2	46.2	24.9	77.8	11.1	16.3
Pdk 42	3 Sep	11.3	22.3	5.4	17.4	43.4	21.3	>85	>12.7	18.6
Pdk 27	17Sep	14.2	29.4	5.9	12.0	44.6	23.5	84	12.3	19.8
Pdk 12	17Sep	13.7	29.6	5.7	11.5	47.1	23.4	83.3	12.1	18.9
Pdk 35	1 Oct	13.0	32.1	6.0	14.6	38.2	21.4	>85	12.6	14.2*
Pdk 2	1 Oct	14.6	30.4	6.3	14.2	40.0	20.9	>85	12.6	17.1

## Northern Southland

Description	Date	RPM	% prot	% Lipid	% SSS	% NDF	% ADF	OMD	MJME/kg DM	%DM
Pdk 18	2 Jul	9.4	25.8	4.9	15.7	44.0	22.8	84.3	12.3	18.4
Pdk 9	2 Jul	10.4	26.5	4.5	16.6	40.2	23.2	>85	12.4	15.0
Pdk 9	23 Jul	10.8	28.6	4.7	10.6	49.2	24.5	80.0	11.7	13.9
Pdk 18	23 Jul	9.4	23.7	4.5	16.6	46.5	25.1	81.2	11.7	15.0
Pdk 9	5 Aug	11.8	27.2	5.2	18.2	39.7	22.8	84.4	12.3	18.8
Pdk 18	20Aug	9.4	23.6	4.7	17.6	42.9	23.1	85	12.6	24.8
Pdk 14	20Aug	10	26.3	5.6	20.5	33.1	21.1	>85	>12.7	21.7
Pdk 4	3 Sep	12.8	30.0	5.7	8.9	49.1	22.5	78.7	11.7	19.5
Pdk 32	3 Sep	9.2	23.7	4.8	16.7	41.4	22.4	84.3	12.2	18.5
Pdk 12	17Sep	9.2	33.8	5.9	12.0	36.6	22.4	>85	12.3	14.2*
Pdk 8	17Sep	11.0	29.8	5.5	13.2	40.4	22.6	84.7	12.1	14.6*
Pdk 25	1 Oct	11.0	25.3	5.2	15.6	42.8	24.4	82.8	12.1	19.0

- \* Pasture sample collected in wet conditions

# Southland Monitor Farm Project

## Weekly Update – 8 October 08

### General Comments

Soil temperatures rose slightly this week but are 0.5 to 1 °C lower than this time last year. With the exception of the Demonstration farm, growth rate increased on all farms this week. The lower growth on the demo farm probably reflects the very high growth recorded last week and wet conditions when plating this week. For the monitor farms, growth rates this week were similar to the Woodlands long term average. The cooler temperatures and slower growth on the West Coast farm last week has seen the introduction of PKE to the milkers. This week we have started reporting the results from the Telford dairy farm as a comparison for farmers in this region.

Pasture samples collected on the monitor farms at the end of September ranged in ME from 12.1 to 12.7 MJ/kg DM and crude protein from 22.1 to 33.3 %. Neutral detergent fibre (NDF) has started to increase in some paddocks but in general is below 45%.

### Tips for the week.

Plan grazing to minimise soil and pasture damage. Aim to keep a consistent even residual on as much of the farm as possible. Due to weather conditions this is not always achievable and remedial action in some paddocks may be required in the next round. Seedhead development has already been initiated therefore the next few weeks are critical to ensure pasture quality is maintained into the next round.

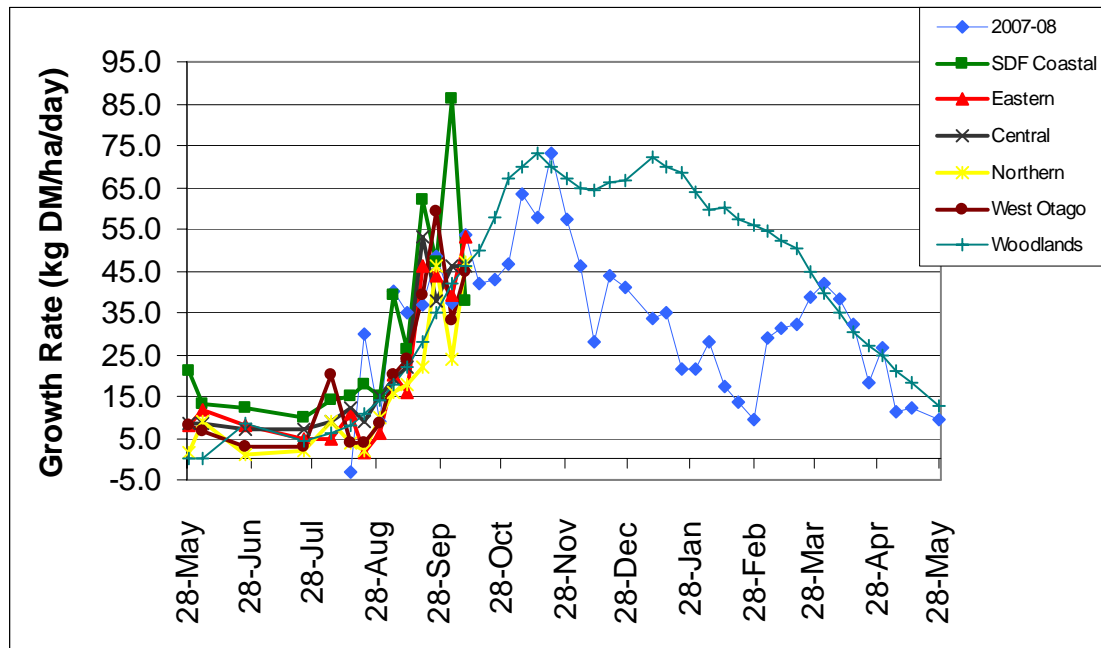
### Telford Summary

New cow herd and farm staff on the Dairy unit this year, have wintered all our own cows. Was very wet coming into spring, issues with feed utilisation and effluent management. Three weeks of Norwest winds and 80kg urea flown over whole farm boosted growth rates hugely from teens to mid 50-60kgDM/ha/day. Still very wet now, unable to get contractors on to cut surplus so is posing some issues maintaining quality. Milksolids production is 35% ahead of this time last year.

### Farm Summary

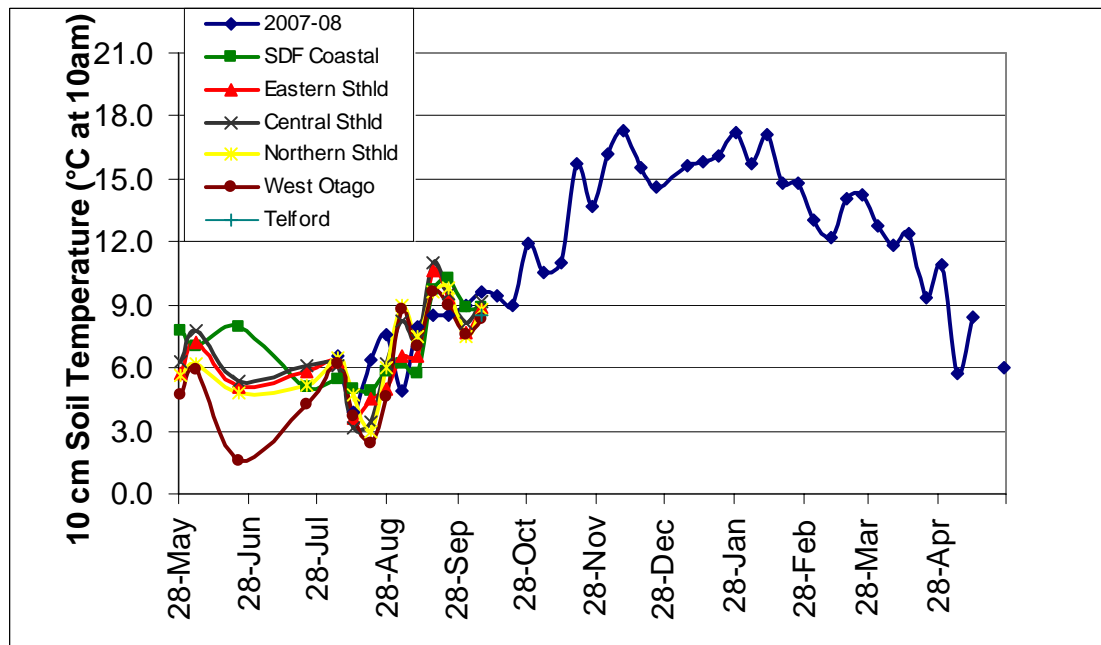
	Demo Farm	Eastern	Central	Northern	West Otago	Telford NEW
Average cover (kg DM/ha)	2088	2027	2275	1774	2179	2495
Rotation length (days)	23	25	32	25	31	22
Percentage in milk	95	94	92	99	89	98
Stocking rate	2.68	3.33	2.5	2.53	2.04	3.3
Milksolids kg/cow	1.89	2.03	2.14	2.18	2.22	1.81
Milksolids kg/ha	4.4	6.3	4.4	5.4	4.5	5.6
N (kg/ha)	26	22	30	0	10	37
Supplement (kg/cow/day)	0	0.5	1	0	1.5	0
Soil temperature (°C)	8.9	8.9	9.2	8.8	8.3	8.5
Growth Rate (kg DM/day)	38	53	46	47	45	47
Rainfall	16	20	13	13	12	20
Comments						

## Pasture Growth Rates

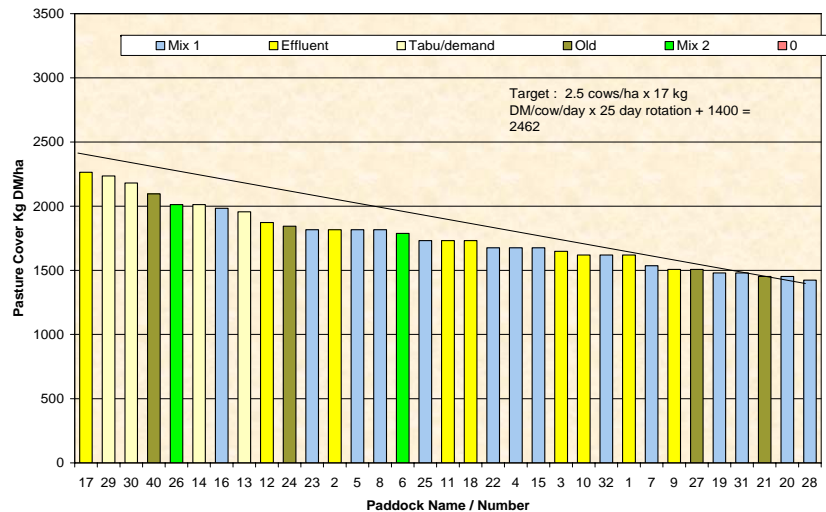


NB the Woodlands data is the long-term average from mature pastures at Woodlands measured using enclosure cages.

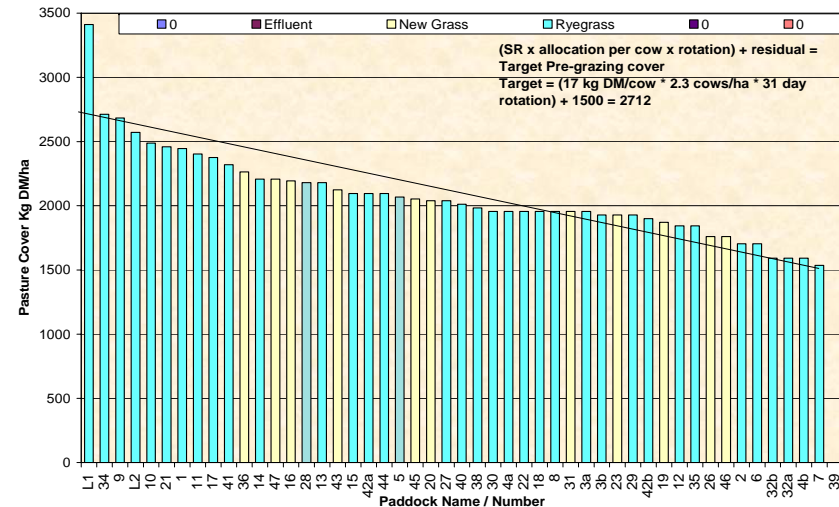
## Soil Temperature



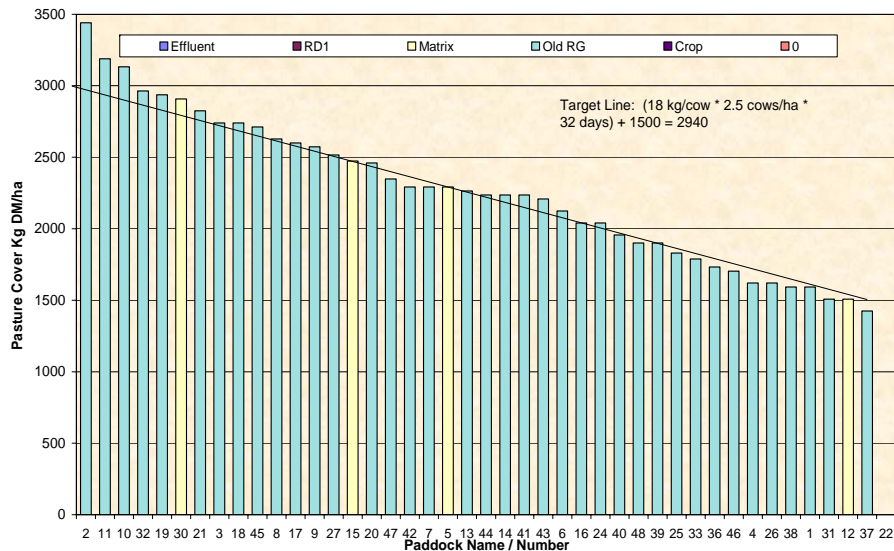
Farm Name Frel Dairy Soil Temp: 8.8 8/10/2008 Wedge Date  
 1774 Average Farm Cover  
**Feed Wedge for Farm Block - Milking**  
 47.3 Current Growth Rate



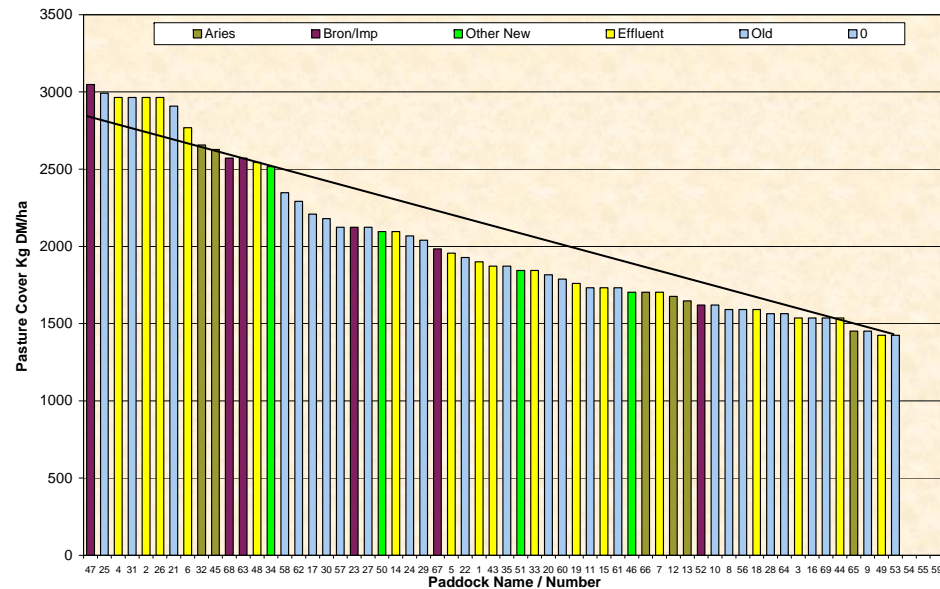
Farm Name Dave & Mel Goble Soil Temp: 8.3 8/10/2008 Wedge Date  
 2179 Average Farm Cover  
**Feed Wedge for Farm Block - Milking**  
 44.9 Current Growth Rate



George & Jose van der P Soil temp: 9.2 7/10/2008 Milking  
 2275  
 46.4



Kevin & Debbie Hall Soil Temp: 8.9 7/10/2008 Milking  
 2027  
 52.6





## West Otago

Description	Date	RPM	% prot	% Lipid	% SSS	% NDF	% ADF	OMD	MJME/kg DM	%DM
Pdk 14	2 Jul	11.8	27.1	5.0	10.6	48.6	25.2	79.1	11.5	21.1
Pdk 26	2 Jul	14.2	27.4	5.2	13.3	43.3	21.5	84.0	12.4	20.7
Pdk 14	23 Jul	12.4	28.8	5.3	13.5	43.3	25.4	80.2	11.5	15.8
Pdk 26	23 Jul	15.2	30.5	5.4	11.3	44.7	23.5	82.8	11.8	14.2
Pdk 14	5 Aug	13.4	29.0	5.4	13.0	45.3	23.9	79.6	11.4	17.0
Pdk 26	5 Aug	18.2	29.1	5.6	12.9	41.5	24.1	81.5	11.7	15.9
Pdk 14	20Aug	13.4	25.6	4.8	15.2	43.7	25	81.5	11.9	21.2
Pdk 42	20Aug	23.0	22.1	4.8	17.7	44.4	22.2	>85	>12.7	17.3
Pdk 17	3 Sep	14.8	28.3	5.5	10.2	46.2	24.9	77.8	11.1	16.3
Pdk 42	3 Sep	11.3	22.3	5.4	17.4	43.4	21.3	>85	>12.7	18.6
Pdk 27	17Sep	14.2	29.4	5.9	12.0	44.6	23.5	84	12.3	19.8
Pdk 12	17Sep	13.7	29.6	5.7	11.5	47.1	23.4	83.3	12.1	18.9
Pdk 35	1 Oct	13.0	32.1	6.0	14.6	38.2	21.4	>85	12.6	14.2*
Pdk 2	1 Oct	14.6	30.4	6.3	14.2	40.0	20.9	>85	12.6	17.1

## Northern Southland

Description	Date	RPM	% prot	% Lipid	% SSS	% NDF	% ADF	OMD	MJME/kg DM	%DM
Pdk 18	2 Jul	9.4	25.8	4.9	15.7	44.0	22.8	84.3	12.3	18.4
Pdk 9	2 Jul	10.4	26.5	4.5	16.6	40.2	23.2	>85	12.4	15.0
Pdk 9	23 Jul	10.8	28.6	4.7	10.6	49.2	24.5	80.0	11.7	13.9
Pdk 18	23 Jul	9.4	23.7	4.5	16.6	46.5	25.1	81.2	11.7	15.0
Pdk 9	5 Aug	11.8	27.2	5.2	18.2	39.7	22.8	84.4	12.3	18.8
Pdk 18	20Aug	9.4	23.6	4.7	17.6	42.9	23.1	85	12.6	24.8
Pdk 14	20Aug	10	26.3	5.6	20.5	33.1	21.1	>85	>12.7	21.7
Pdk 4	3 Sep	12.8	30.0	5.7	8.9	49.1	22.5	78.7	11.7	19.5
Pdk 32	3 Sep	9.2	23.7	4.8	16.7	41.4	22.4	84.3	12.2	18.5
Pdk 12	17Sep	9.2	33.8	5.9	12.0	36.6	22.4	>85	12.3	14.2*
Pdk 8	17Sep	11.0	29.8	5.5	13.2	40.4	22.6	84.7	12.1	14.6*
Pdk 25	1 Oct	11.0	25.3	5.2	15.6	42.8	24.4	82.8	12.1	19.0

- \* Pasture sample collected in wet conditions

# Southland Monitor Farm Project

## Weekly Update – 1 October 08

### General Comments

Soil temperatures this week dropped again and are now below the same time last season. Growth rates were extremely variable between the regions this week. The Demonstration farm grew at more than 80 kg DM/ha/day while the Northern farm grew at less than 30 kg DM/ha/day. The walk on the northern farm was postponed on Wednesday afternoon because of snow showers and wet conditions. Snow fell on the West Otago farm on the 28<sup>th</sup> September and it was very wet and cold when walked on Wednesday morning. Production continues to rise and ranged from 1.90 to 2.20 kg MS/cow/day. Most of the farms now only have 10% of their herd left to calve. Only the Eastern and Central farms continue to feed supplement to the milkers.

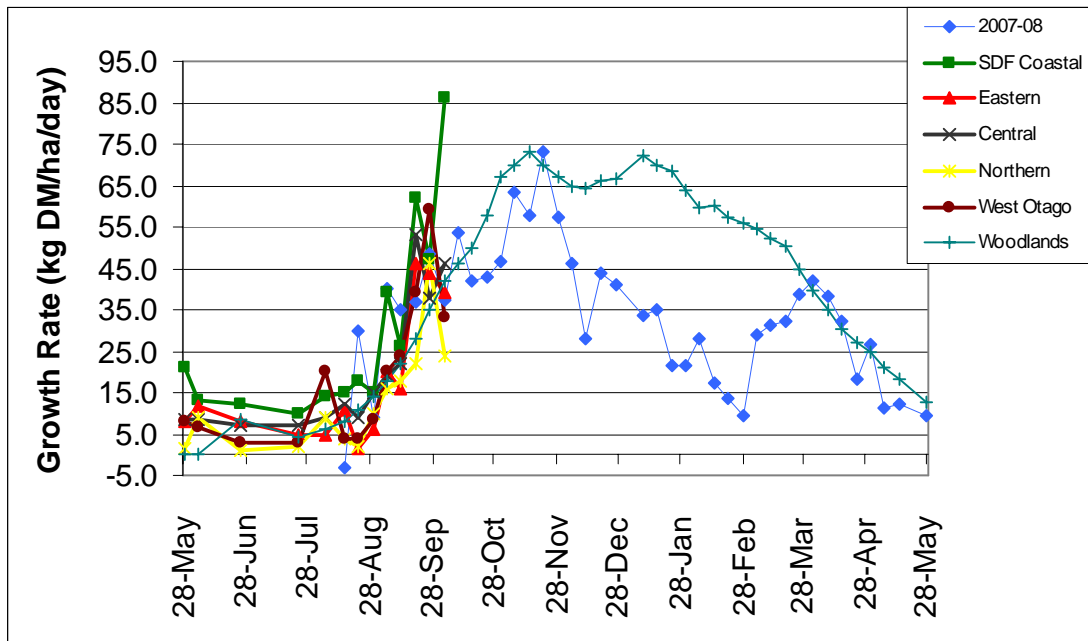
Tips for the week.

With calving almost finished it is time to start thinking about mating. Vet check at risk cows which are those that had calving difficulties, light cows, RFMs etc. Tail paint cows 4 weeks pre mating and record pre mating heats. These can give early indications of any cycling trends. Many of the above are reactive. The InCalf programme is designed to take a more proactive and long term approach to farm management factors affecting reproductive performance. Ask for your herds fertility focus report for a benchmark of your herds previous performance.

### Farm Summary

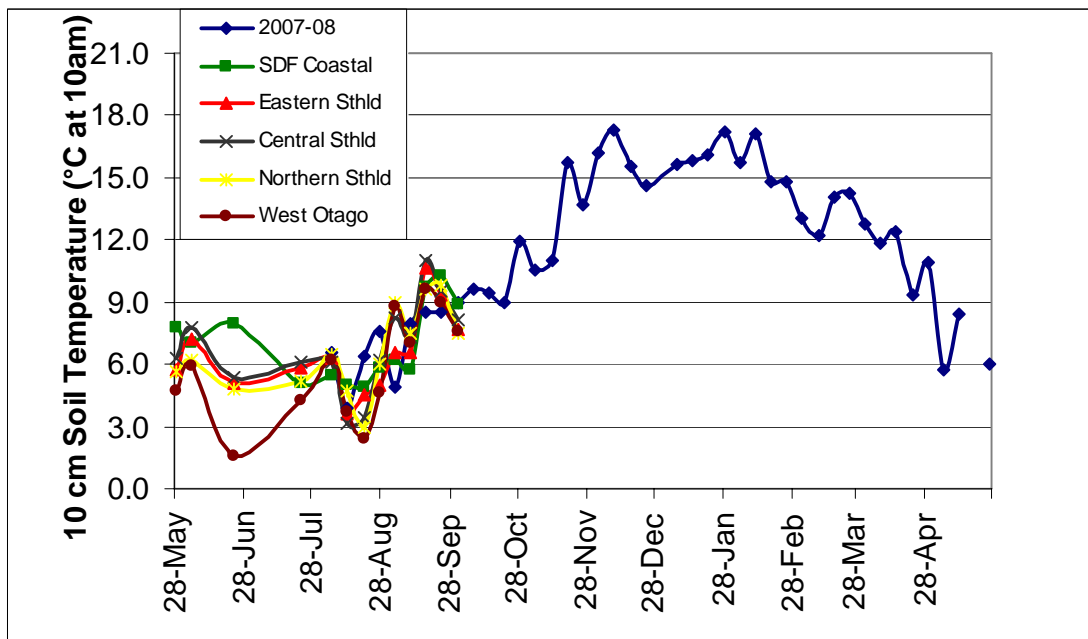
	Demo Farm	Eastern	Central	Northern	West Otago
Average cover (kg DM/ha)	2644	2078	2278	1693	2069
Rotation length (days)	25	30	34	26	25
Percentage in milk	88	92	89	95	90
Stocking rate	2.25	3.33	2.22	2.52	2.53
Milksolids kg/cow	1.90	1.88	2.15	2.16	2.15
Milksolids kg/ha	4.3	5.8	4.4	5.1	5.0
N (kg/ha)	20	22	30	0	10
Supplement (kg/cow/day)	0	0.5	2.25	0	0
Soil temperature (°C)	8.9	7.7	8.1	7.5	7.6
Growth Rate (kg DM/day)	86	39	46	24	33
Rainfall	38	40	43	24	33
Comments					

## Pasture Growth Rates



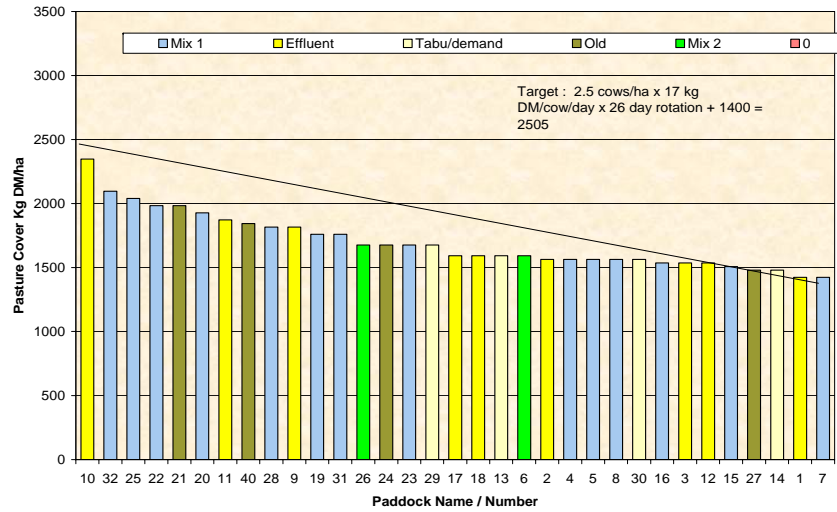
NB the Woodlands data is the long-term average from mature pastures at Woodlands measured using enclosure cages.

## Soil Temperature



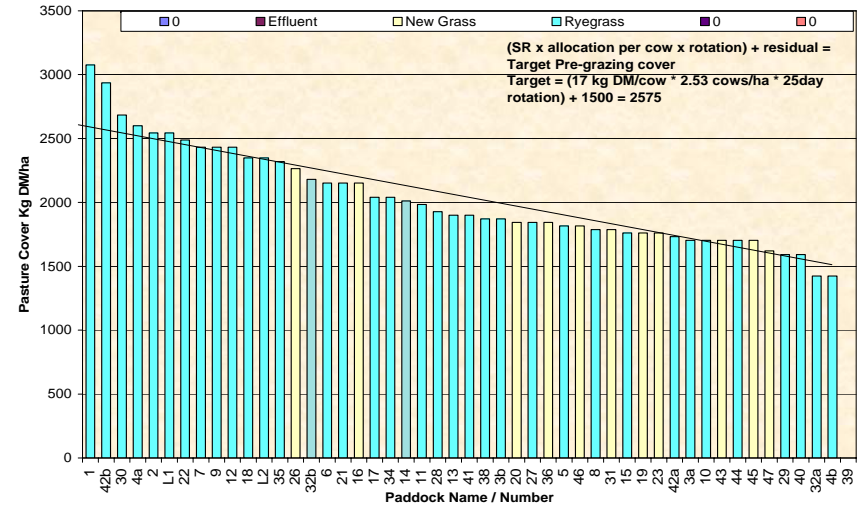
Farm Name: Frel Dairy  
 Soil Temp: 7.5  
 2/10/2008  
 Wedge Date: 1693  
 Average Farm Cover: 24.4  
 Current Growth Rate

**Feed Wedge for Farm Block - Milking**



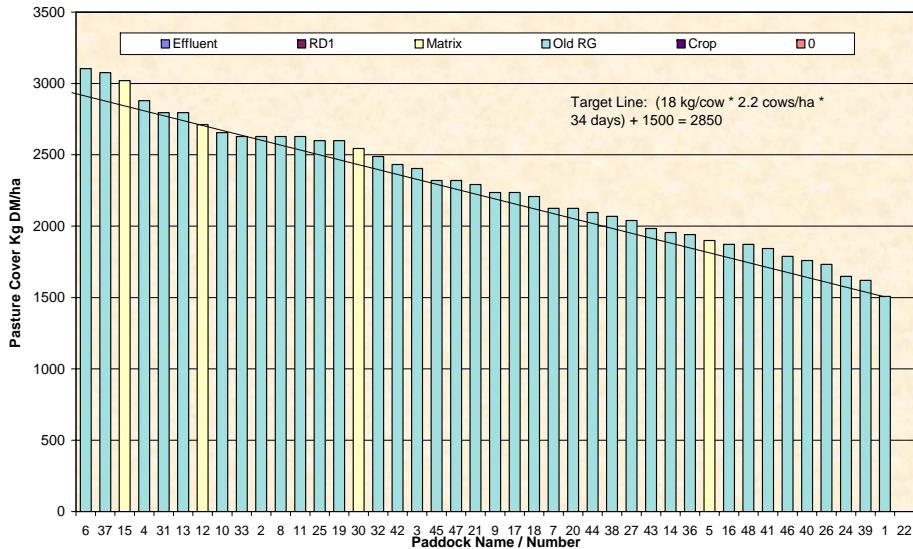
Farm Name: Dave & Mel Goble  
 Soil Temp: 7.6  
 1/10/2008  
 Wedge Date: 2069  
 Average Farm Cover: 33.4  
 Current Growth Rate

**Feed Wedge for Farm Block - Milking**



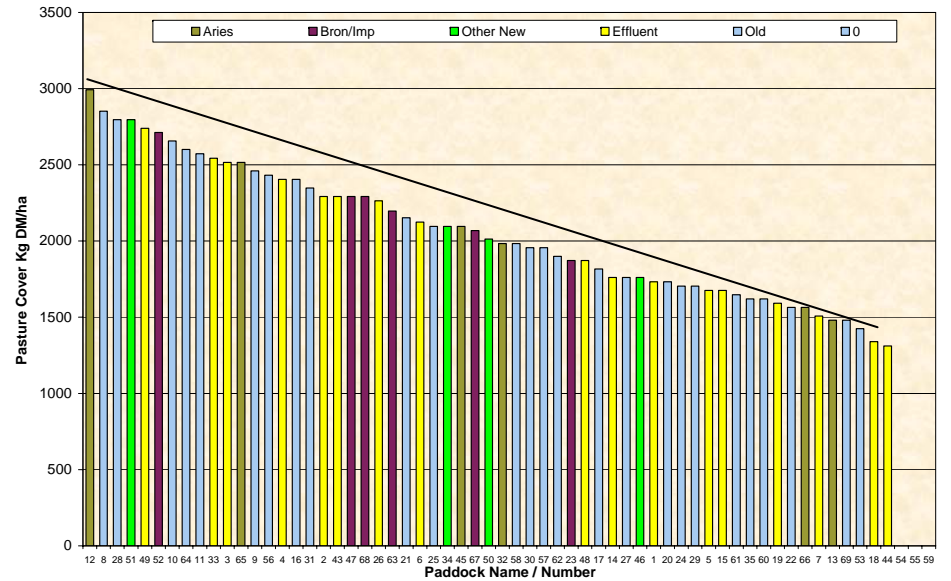
George & Jose van der Poel  
 Soil temp: 8.1  
 30/09/2008  
 2278  
 46.1

**Milking**



Kevin & Debbie Hall  
 Soil Temp: 7.7  
 30/09/2008  
 2078  
 39.3

**Milking**





## West Otago

Description	Date	RPM	% prot	% Lipid	% SSS	% NDF	% ADF	OMD	MJME/kg DM	%DM
Pdk 14	2 Jul	11.8	27.1	5.0	10.6	48.6	25.2	79.1	11.5	21.1
Pdk 26	2 Jul	14.2	27.4	5.2	13.3	43.3	21.5	84.0	12.4	20.7
Pdk 14	23 Jul	12.4	28.8	5.3	13.5	43.3	25.4	80.2	11.5	15.8
Pdk 26	23 Jul	15.2	30.5	5.4	11.3	44.7	23.5	82.8	11.8	14.2
Pdk 14	5 Aug	13.4	29.0	5.4	13.0	45.3	23.9	79.6	11.4	17.0
Pdk 26	5 Aug	18.2	29.1	5.6	12.9	41.5	24.1	81.5	11.7	15.9
Pdk 14	20Aug	13.4	25.6	4.8	15.2	43.7	25	81.5	11.9	21.2
Pdk 42	20Aug	23.0	22.1	4.8	17.7	44.4	22.2	>85	>12.7	17.3
Pdk 17	3 Sep	14.8	28.3	5.5	10.2	46.2	24.9	77.8	11.1	16.3
Pdk 42	3 Sep	11.3	22.3	5.4	17.4	43.4	21.3	>85	>12.7	18.6
Pdk 27	17Sep	14.2	29.4	5.9	12.0	44.6	23.5	84	12.3	19.8
Pdk 12	17Sep	13.7	29.6	5.7	11.5	47.1	23.4	83.3	12.1	18.9

## Northern Southland

Description	Date	RPM	% prot	% Lipid	% SSS	% NDF	% ADF	OMD	MJME/kg DM	%DM
Pdk 18	2 Jul	9.4	25.8	4.9	15.7	44.0	22.8	84.3	12.3	18.4
Pdk 9	2 Jul	10.4	26.5	4.5	16.6	40.2	23.2	>85	12.4	15.0
Pdk 9	23 Jul	10.8	28.6	4.7	10.6	49.2	24.5	80.0	11.7	13.9
Pdk 18	23 Jul	9.4	23.7	4.5	16.6	46.5	25.1	81.2	11.7	15.0
Pdk 9	5 Aug	11.8	27.2	5.2	18.2	39.7	22.8	84.4	12.3	18.8
Pdk 18	20Aug	9.4	23.6	4.7	17.6	42.9	23.1	85	12.6	24.8
Pdk 14	20Aug	10	26.3	5.6	20.5	33.1	21.1	>85	>12.7	21.7
Pdk 4	3 Sep	12.8	30.0	5.7	8.9	49.1	22.5	78.7	11.7	19.5
Pdk 32	3 Sep	9.2	23.7	4.8	16.7	41.4	22.4	84.3	12.2	18.5
Pdk 12	17Sep	9.2	33.8	5.9	12.0	36.6	22.4	>85	12.3	14.2*
Pdk 8	17Sep	11.0	29.8	5.5	13.2	40.4	22.6	84.7	12.1	14.6*

- Pasture sample collected in wet conditions