

Southland Monitor Farm Project

Weekly Update – 16 September 2011

This week there has been high rainfall across the region. This has led to a lot of muddy paddocks and frustration for farmers. The Central Southland farm received a dumping of snow around about 5cm deep on Tuesday which would have added to the soil moisture levels. The APC's range from 1873 to 2349 kg DM/ha, and the growth rates from 18 to 43 kg DM/ha/day.

With the paddocks being considerably wet, the utilisation of the pasture tends to decrease, so the monitor farms have made up for this by adding more supplementary feed into the system.

Most of the rotation lengths have sped up this week as more milking cows are added to the herd and the farms reach the second round of their rotation.

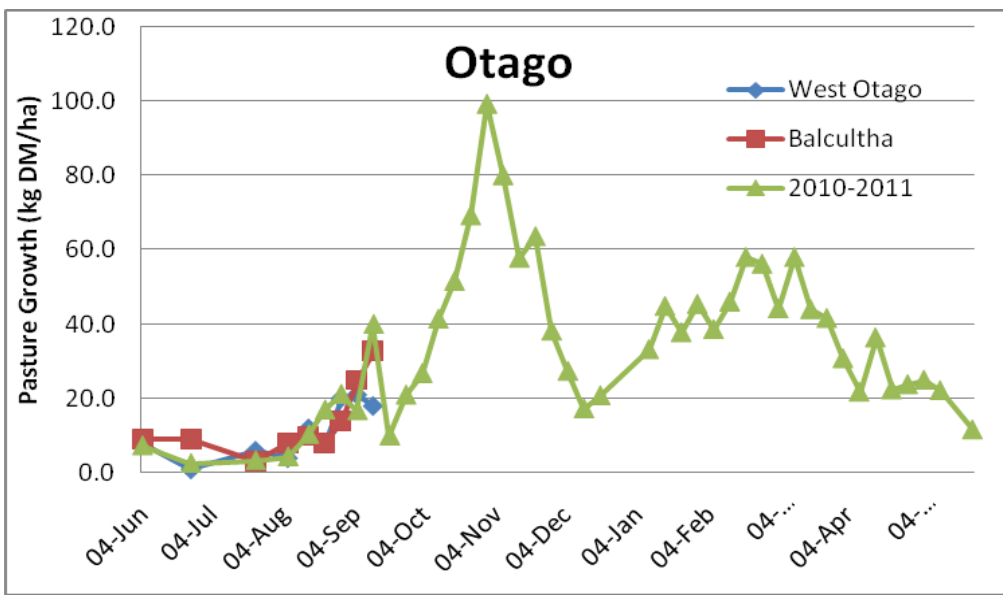
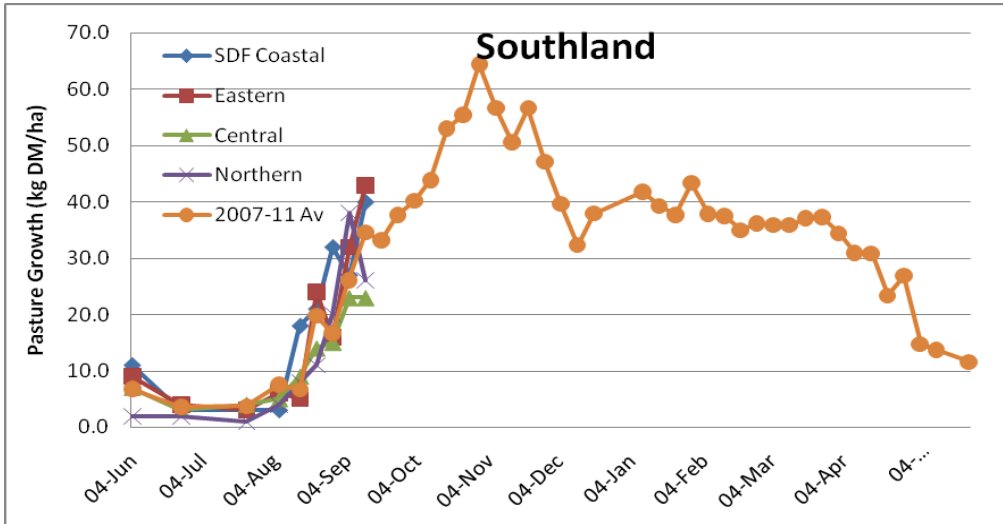
Weekly Tip

It's important to monitor grazing residuals now to ensure cows are achieving their increasing intake levels. With supplement in the system and as growth rates increase, the risk is that cows will start to leave too much behind resulting in lower milksolids response to the supplement that will affect profitability. As residuals increase over 1650kg DM/ha, decrease supplement input into the system to keep grazing residuals in the 1500 to 1650 kg DM/ha range as this will ensure quality pasture in the second round. Calves should be put out onto fresh pasture if it is sunny and should be supplemented with calf pellets, with at least 18% crude protein, allowing for 2kg/calf/day. It's almost time to start vaccinating calves so arrange vaccines and equipment from the vets.

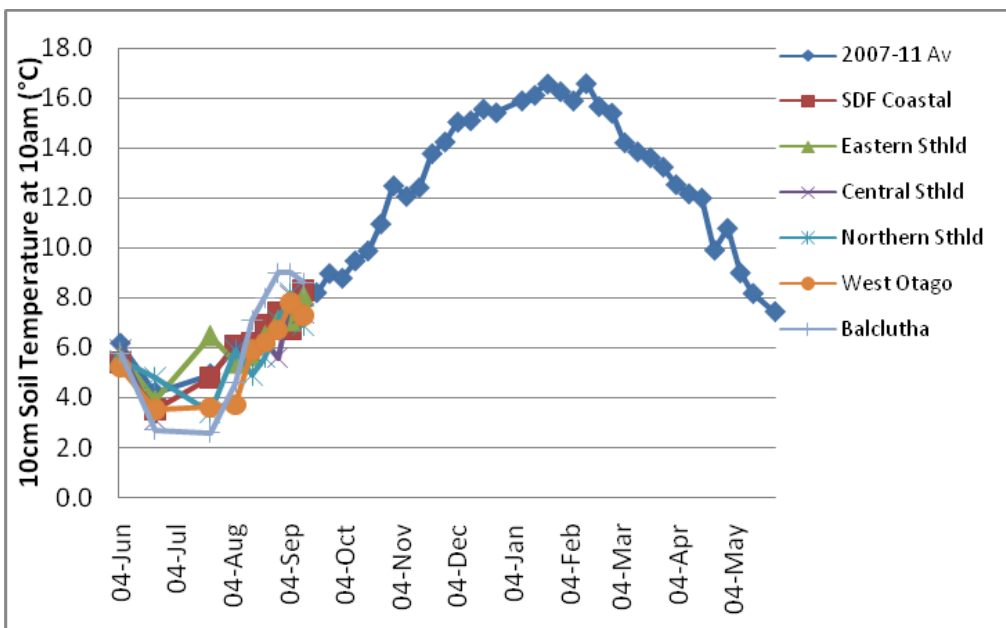
Farm Summary

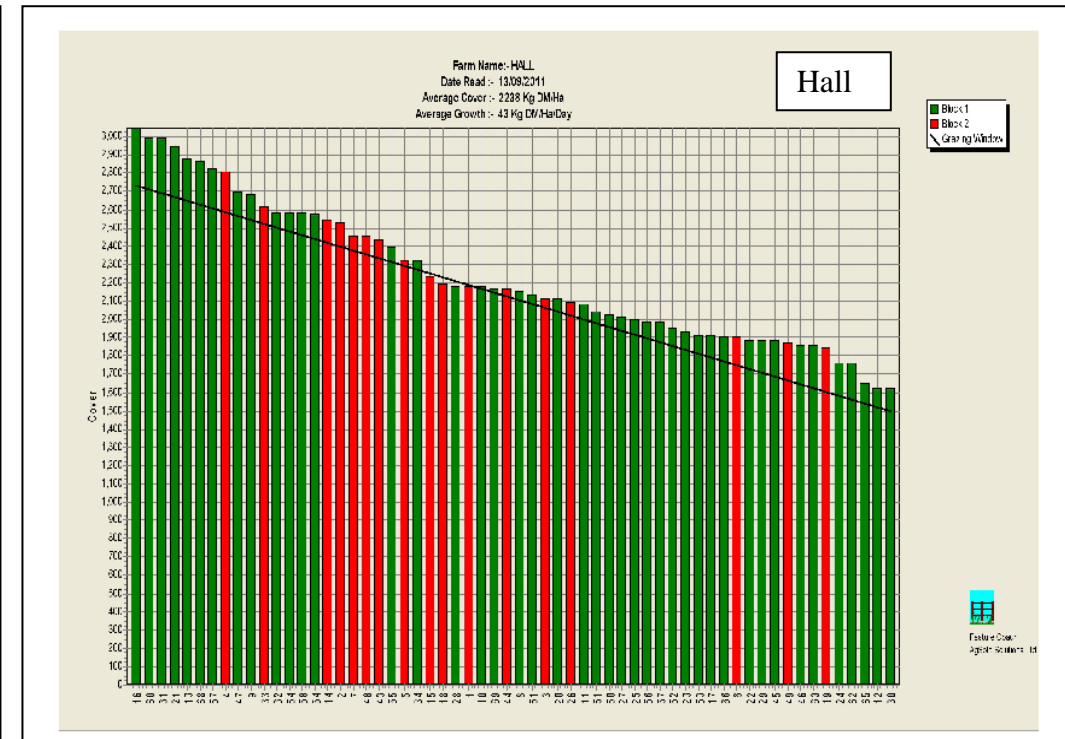
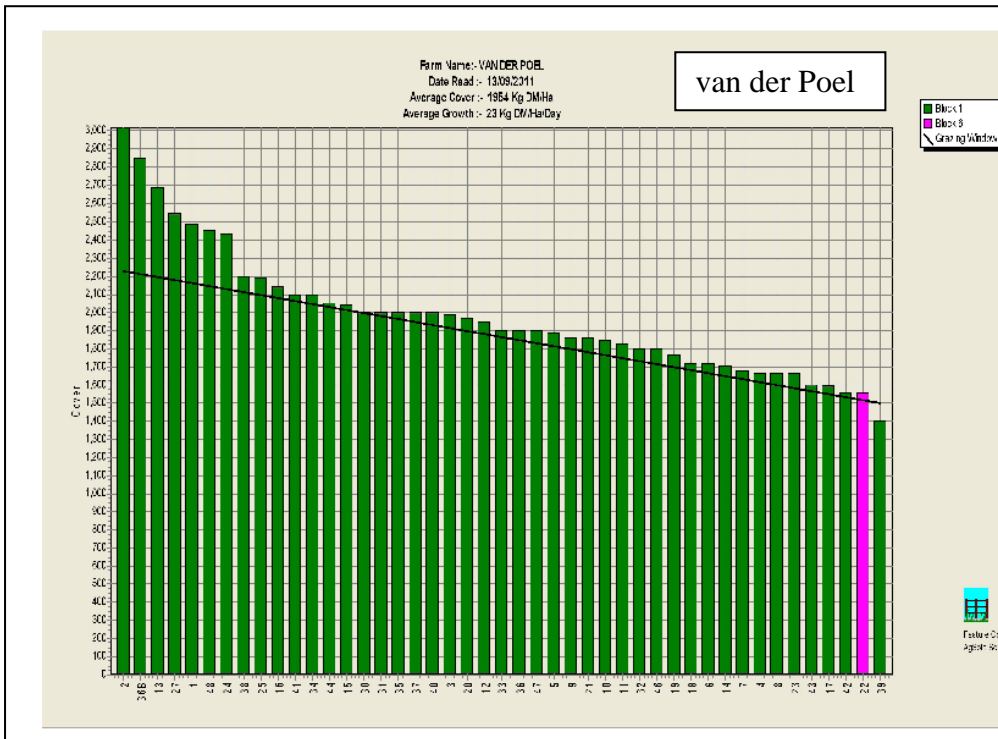
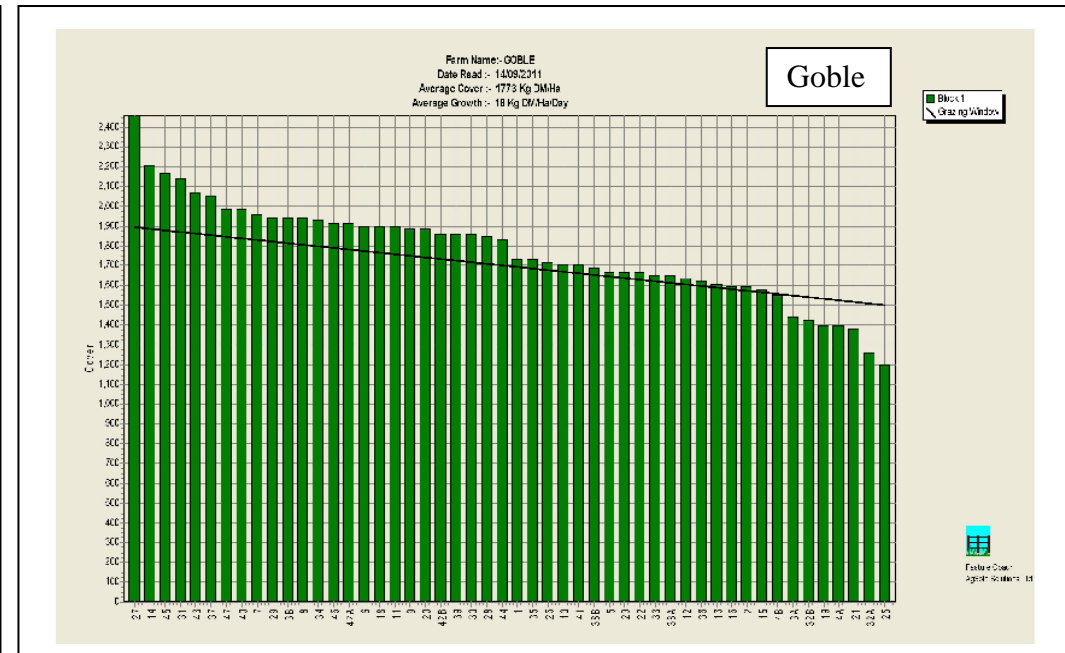
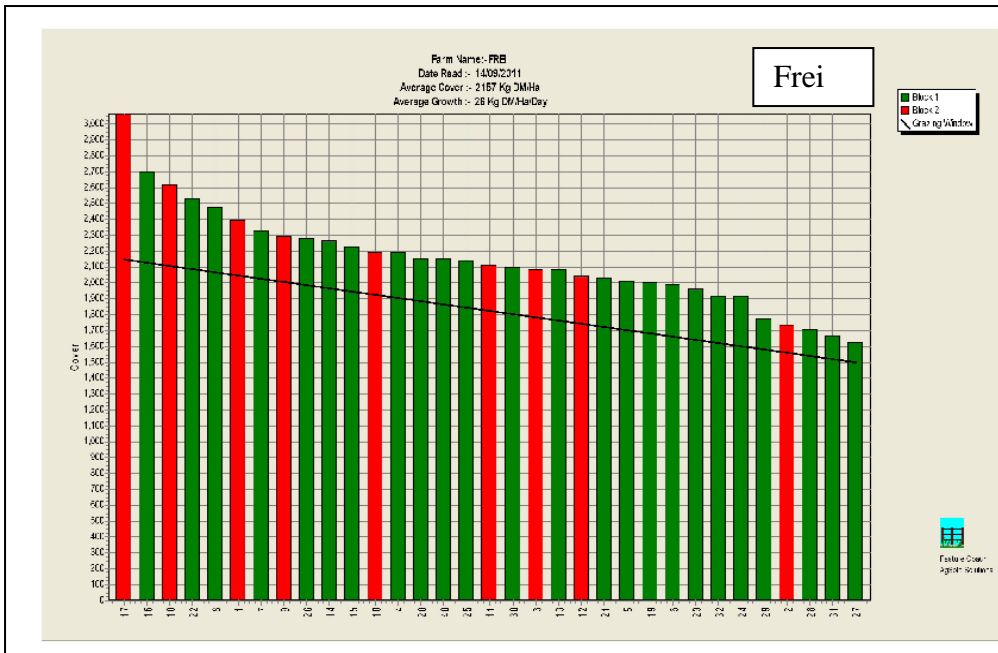
	Demo Farm	Eastern	Central	Northern	West Otago	Telford
Average cover (kg DM/ha)	2349	2238	1954	2201	1873	2169
<i>Previous APC (kg DM/ha)</i>	<i>2397</i>	<i>2100</i>	<i>1981</i>	<i>2201</i>	<i>1873</i>	<i>2169</i>
Supplement (kg/cow/day)	1.7	3	4	0.5	9	3
Rotation length (days)	43	43	28	22	20	100
Stocking rate on pasture	2.3	2.2	2.0	1.9	2.2	2.6
Milksolids kg/cow	1.98	1.96	2.15	2.03	1.85	1.30
Milksolids kg/ha	3.9	4.4	4.3	3.4	4.0	3.3
N (kg/ha)	20	15	0	0	0	0
Soil temperature (°C)	8.3	8.1	7.4	6.9	7.3	8.6
Growth Rate (kg DM/day)	40	43	23	26	18	33
Rainfall	36	33	46	45	43	17
Comments						

Pasture Growth Rates



Soil Temperature





Southland Monitor Farm Project

Weekly Update – 9 September 2011

This week has been considerably drier and warmer than the previous two weeks. As a consequence soil temperatures have continued to rise and this has seen a marked improvement in growth rate on each of the farms. Average growth for the week was 10 kg DM/ha/day more than the average for these farms this time last year. Average pasture cover has risen slightly on several farms but continued to decline on others.

Average soil temperature has continued to rise and this week was 0.7 °C higher than the same time last year.

Supplementary feeding has continued at moderate levels across the farms this week in an attempt to hold the rotation. The exception has been the Northern Southland farm that is not feeding any supplement due to a high average pasture cover on the farm, and high growth rates.

Eastern Southland and Wallacetown have both commenced nitrogen application.

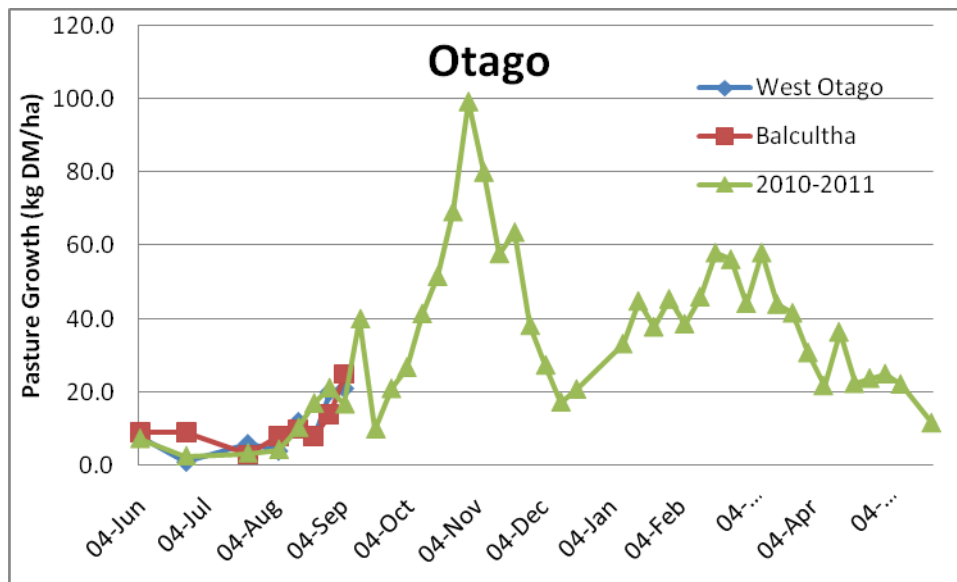
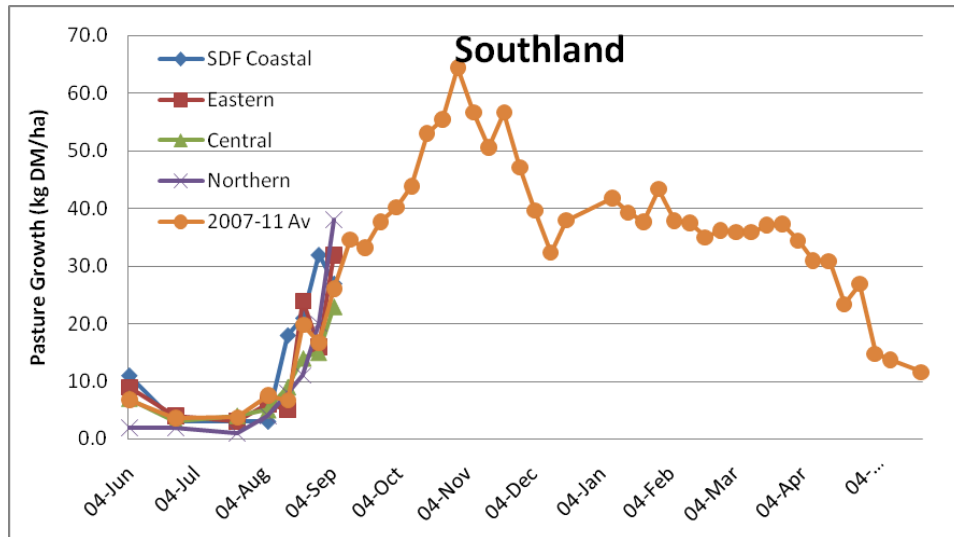
Weekly Tip

The best action you can take now to benefit both you and your cows is to focus on achieving grazing residuals of 1500 to 1600kg DM/ha to ensure there will be high quality pasture going into the second and third rounds. Maintaining quality will ensure a good production peak as well as maintaining that peak through to late December. High quality pasture will provide sufficient energy to the cows to get as many as possible cycling again before mating. To achieve this, farm walks and the feed wedge need to be done regularly. This will identify when and where surpluses are occurring and will help avoid acting too early or too slowly with pasture management decisions.

Farm Summary

	Demo Farm	Eastern	Central	Northern	West Otago	Telford
Average cover (kg DM/ha)	2397	2100	1981	2201	1873	2169
Previous APC (kg DM/ha)	2456	2149	2196	2211	1892	2012
Supplement (kg/cow/day)	3	2	3	0	8	2
Rotation length (days)	48	55	45	30	39	100
Stocking rate on pasture	2.4	1.7	1.9	1.6	1.8	2.0
Milksolids kg/cow	1.90	1.60	1.90	1.50	1.90	1.30
Milksolids kg/ha	3.1	2.0	3.4	2.3	3.4	3.4
N (kg/ha)	20	15	0	0	0	0
Soil temperature (°C)	6.7	7.1	8.1	8.2	7.8	9.0
Growth Rate (kg DM/day)	27	16	23	38	21	25
Rainfall	25	10	7	0	6	6
Comments						

Pasture Growth Rates



Soil Temperature

