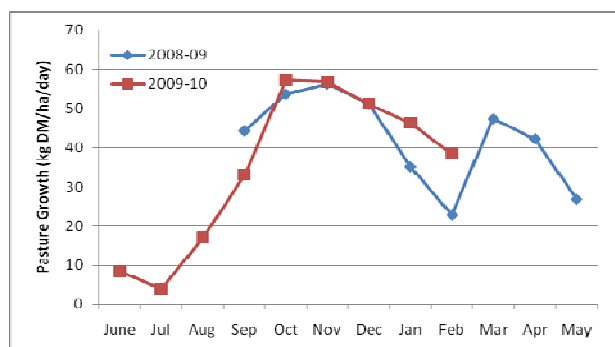


# Westland Monitor Farm Project

## Weekly Update – 3 March 2010

### General Comments

Growth rates have decreased this week in 2 of the farms and increased in the other 2 farms resulting in an average decrease in the growth rate of 3.4% for the region compared to the previous week. The average growth of 49 kg DM/ha/day is 24 kg DM/ha/day higher than during the same period last year. Average growth for February was significantly higher than last season (see figure below). On average an additional 780 kg DM/ha was grown during summer 2010 compared with summer 2009.



Supplementary feeding levels have decreased on most of the farms. Only Kotuku and Ikamatua are still feeding supplements. The feed wedges on all the farms are looking good this week, although the Ikamatua farm is showing some surplus at the top of the wedge.

Except in one of the farms the soil temperature was lower this week than in the previous one. Average soil temperature for the last 6 weeks has been between 18 and 22 °C.

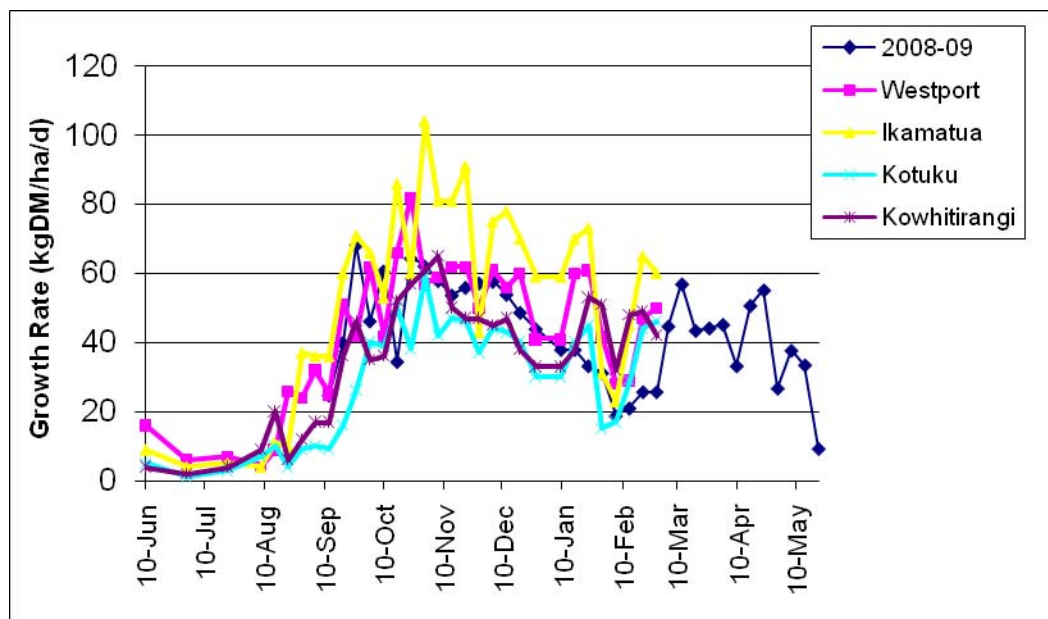
### CO comment

The season is racing by so now is a good time to sit down with staff to plan the rest of the season and discuss next season. Take time to do performance reviews and update training plans. This is a great opportunity to find out if the role is challenging enough and discuss opportunities for development. If staff are moving on ensure that you have a good exit process and receive feedback from them. If recruiting develop a clear process to deal with the applications. For more information the HR toolkit is available from [www.dairynz.co.nz](http://www.dairynz.co.nz).

### Farm Summary

	Westport	Ikamatua	Kotuku	Kowhitirangi
Average cover (kg DM/ha)	2073	2336	2055	2095
Rotation length (days)	22	24	25	23
Stocking rate	2.7	2.7	2.7	2.5
% calved	100	100	100	100
Milksolids kg/cow	1.40	1.73	1.31	1.31
Milksolids kg/ha	3.9	4.5	3.6	3.1
N (kg/ha) year to date	87	198	143	86
Supplement (kg/cow/day)	0	4.0	3.4	0
Soil temperature (°C)	18.6	19.7	18.7	16.5
Growth Rate (kg DM/day)	50	60	46	42
Rainfall	20	4	0	79

## Pasture Growth Rates



## Soil Temperature

