

# Westland Monitor Farm Project

## Weekly Update – 26 August 2009

### General Comments

Growth rates increased across the region this week with the highest growth rates being recorded in Westport and Ikamatua. Soil temperatures increased in all regions except Ikamatua which recorded the only temperature below 10 °C. Milk yield has only been reported by the Ikamatua and Kowhitirangi farms.

The Kowhitirangi farm is extremely wet after receiving 400 mm rain in the last 2 weeks. This compares with only 15 mm being recorded in Ikamatua.

Calving is progressing well on all of the farms. Supplements are being offered to the milkers on the Westport, Kowhitirangi and Ikamatua farms. Rotation lengths are slowing declining as more cows calve and the area allocated to milkers increases.

90% of the Ikamatua farm has had 40 units N/ha applied over the last 2 weeks.

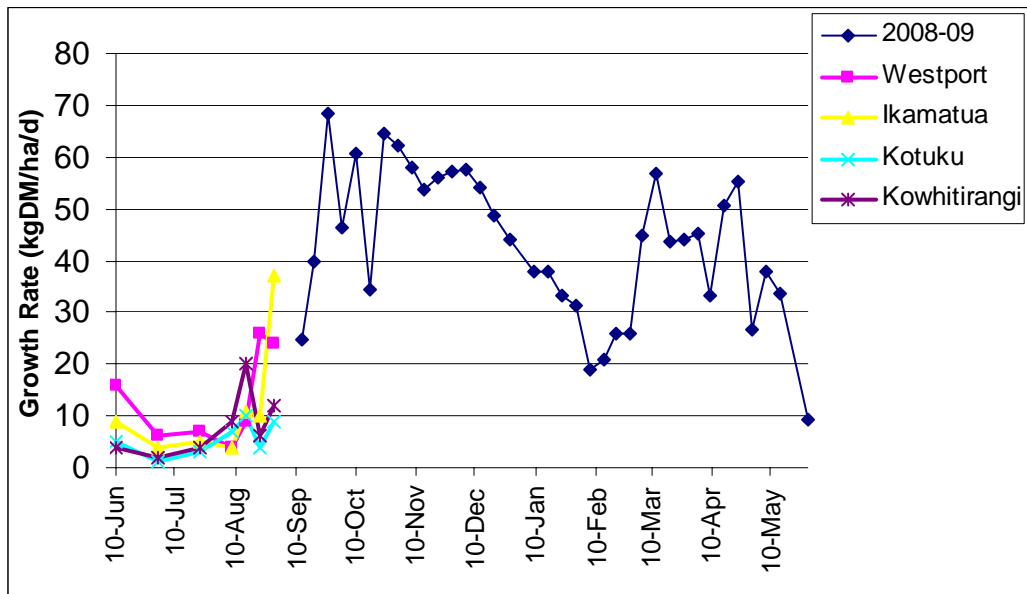
### CO comment

Farm walks are crucial as growth rates start to increase. Increased growth could mean that you can stop feeding supplements earlier than budgeted. These saved supplements can be used if the weather turns wet and cold. Keep a close watch on residuals as quality can be lost quickly and will be very difficult to rectify.

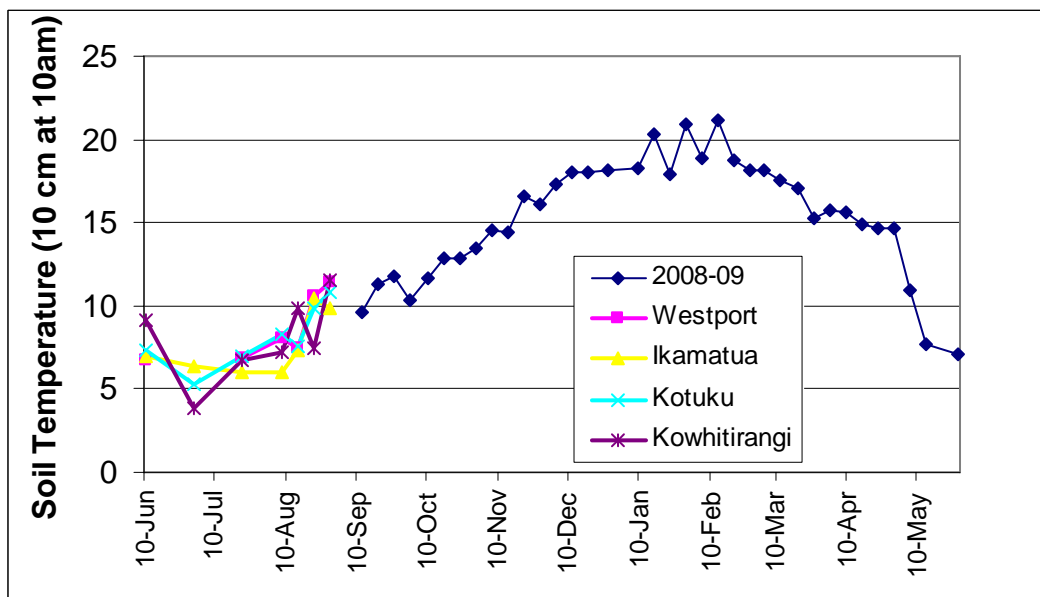
### Farm Summary

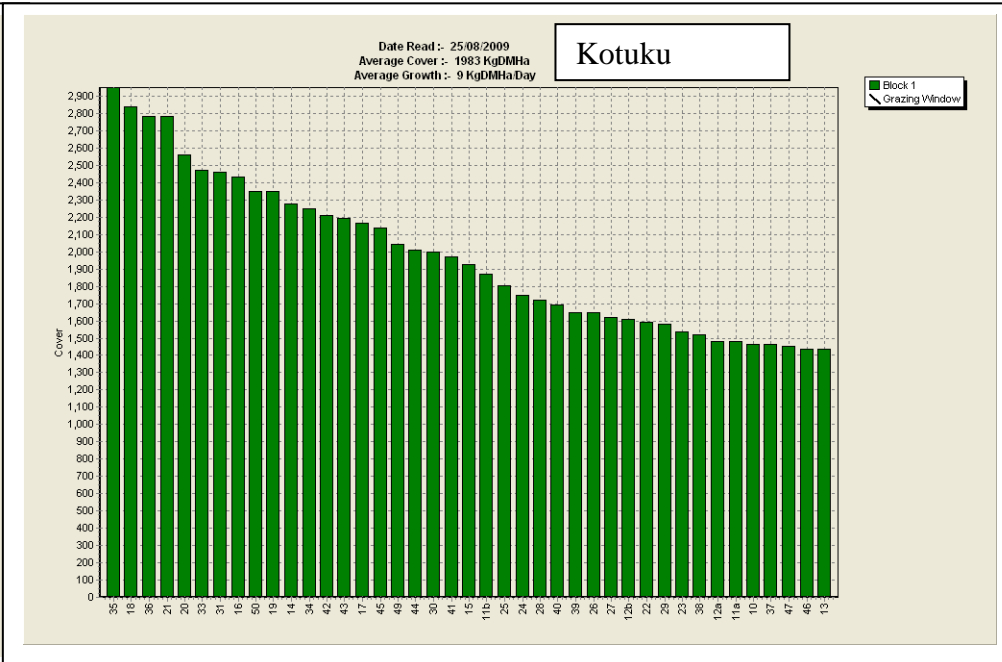
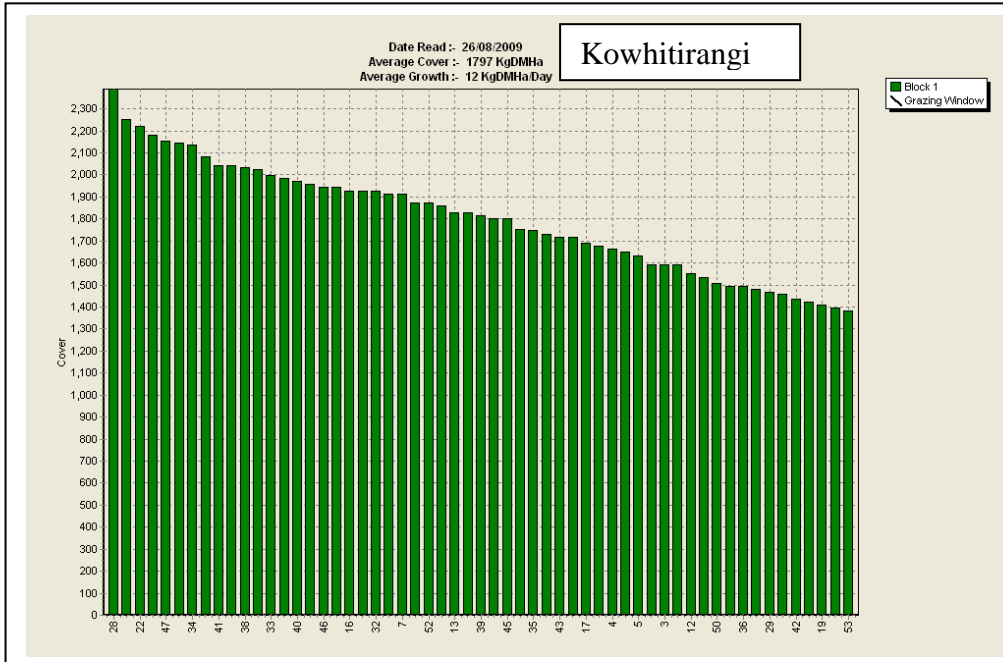
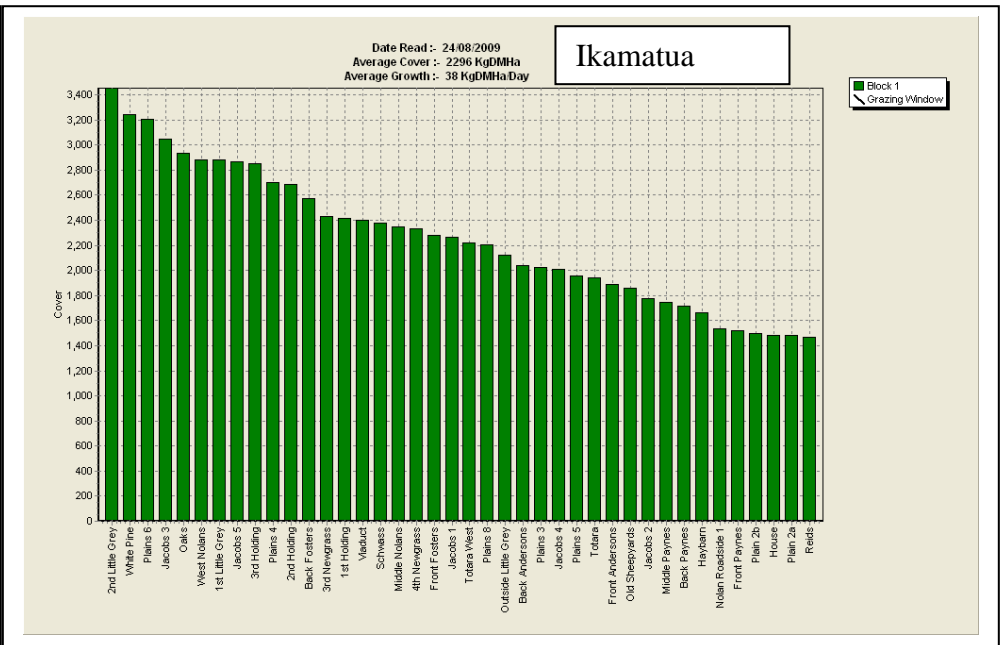
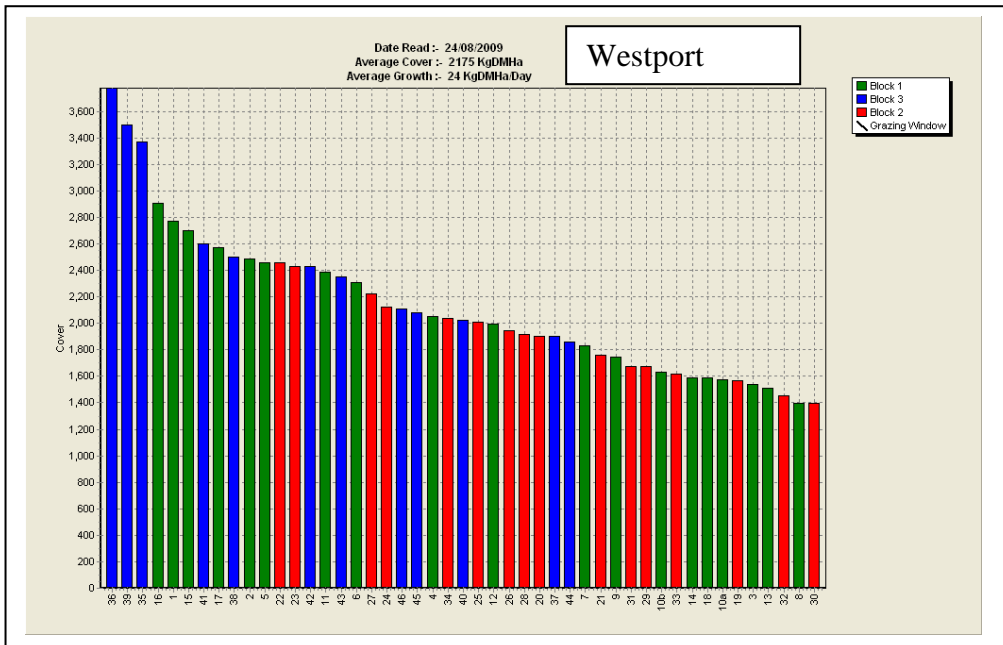
	Westport	Ikamatua	Kotuku	Kowhitirangi
Average cover (kg DM/ha)	2175	2296	1983	1797
Rotation length (days)	61	61	-	75
Stocking rate				
% calved	57	58	-	37
Milksolids kg/cow	-	1.80	-	1.30
Milksolids kg/ha	-	1.69	-	0.55
N (kg/ha)	-	40	-	-
Supplement (kg/cow/day)	2.9	4	-	4
Soil temperature (°C)	11.4	9.8	10.8	11.5
Growth Rate (kg DM/day)	24	37	9	12
Rainfall	-	5	-	186

## Pasture Growth Rates



## Soil Temperature













# Westland Monitor Farm Project

## Weekly Update – 19 August 2009

### General Comments

Weather conditions have stayed settled with less than 30 mm of rain falling across the region. Growth rates increased in Westport and Ikamatua but eased in Kotuku and Kowhitirangi. Soil temperatures increased in all regions except Kowhitirangi where a heavy frost was recorded on the morning of the farm walk.

Calving is progressing well on all of the farms. Supplements are being offered to the milkers on the Westport and Ikamatua farms. Rotation lengths are slowing declining as more cows calve and the area allocated to milkers increases.

90% of the Ikamatua farm has had 40 units N/ha applied over the last 2 weeks.

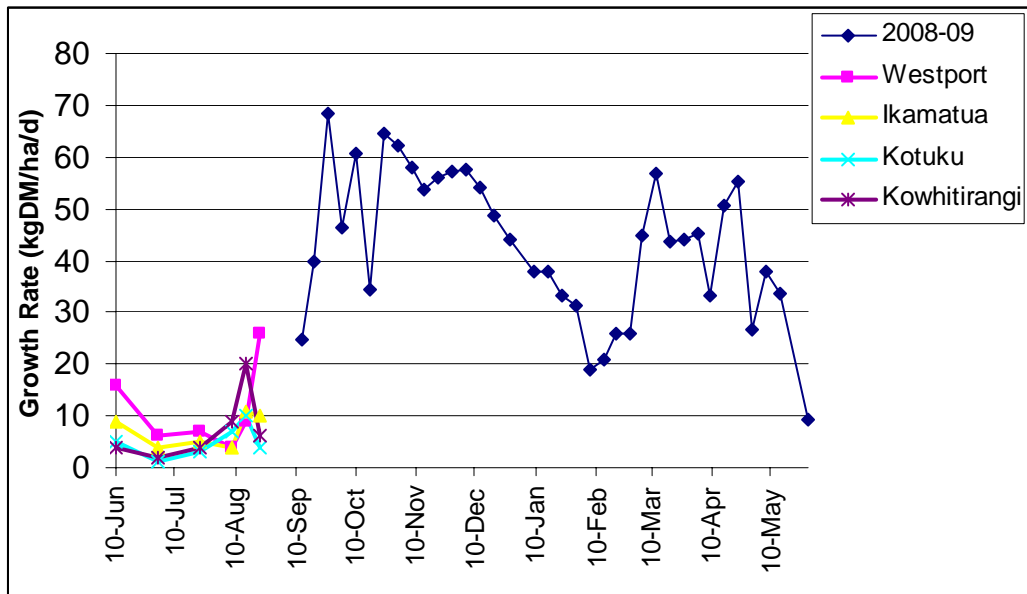
### CO comment

With calving underway it is important to continue with regular farm walks to assess APC. Scheduling this activity is essential to monitor your feed situation relative to feed budget/ Spring rotation planner. In tight financial times, knowing your current feed situation will ensure that supplements are feed only as required and not wasted. Ensure that all staff members are eating well and are getting enough sleep. Mistakes due to fatigue can be costly and fatal. Try to keep stress levels low and moral high, to ensure everyone gets through smiling and ready for the season ahead.

### Farm Summary

	Westport	Ikamatua	Kotuku	Kowhitirangi
Average cover (kg DM/ha)	2124	2209	2044	1763
Rotation length (days)	71	80		
Stocking rate				
% calved	43	35		
Milksolids kg/cow	-	-	-	-
Milksolids kg/ha	-	-	-	-
N (kg/ha)	-	-	-	-
Supplement (kg/cow/day)	2.5	5.5		
Soil temperature (°C)	10.6	10.5	9.8	7.4
Growth Rate (kg DM/day)	26	10	4	6
Rainfall	22	10		

## Pasture Growth Rates



## Soil Temperature

