

Westland Monitor Farm Project

Weekly Update – 22 July 2009

General Comments

Negligible growth has been recorded across the region for the second 3 week period this winter. The highest growth was recorded at Westport and the lowest in Kotuku. Soil temperatures have increased in most regions this week however the highest temperature recorded was 7 C at Kotuku.

The Westport and Kowhitirangi farms are wintering the cows on the milking platform although the Kowhitirangi farm is using a covered standoff area for standing the cows off during wet conditions. Both these farms are on rotations above 150 days.

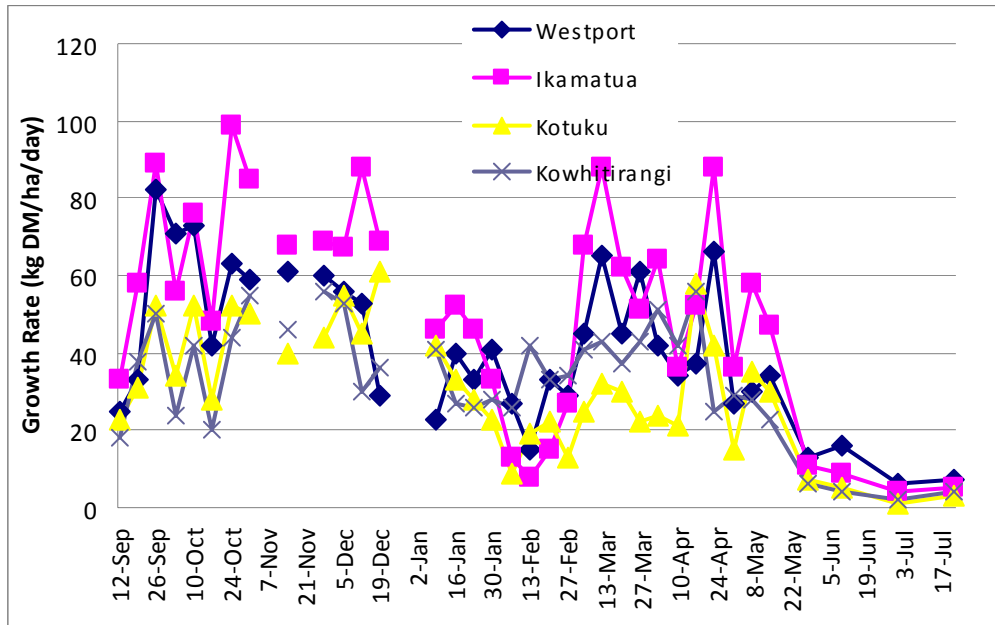
CO comment

Face your feed situation – walk the farm, confirm the size of any deficit and develop a plan on how you will fill the deficit. Share your plan and seek advice. Monitor actual pasture cover weekly and adjust the plan. If you do not have the feed (pasture or supplement) restrict cows at the start of calving to minimise the size of the deficit. Protect future pasture growth – minimise pugging. Stand off or use sacrifice paddocks to avoid pugging and over grazing (less than 1100kg DM/ha).

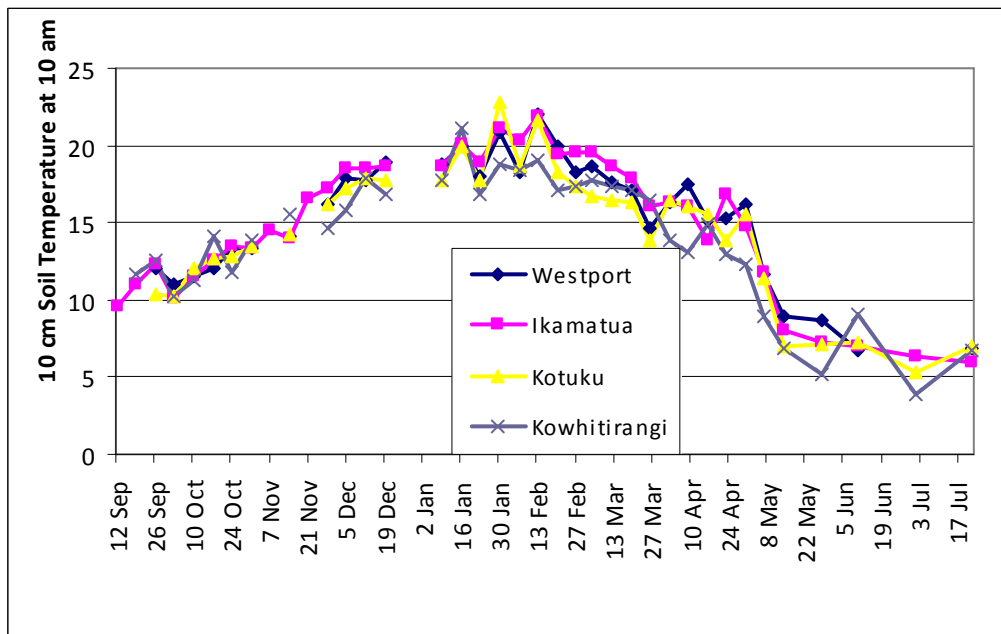
Farm Summary

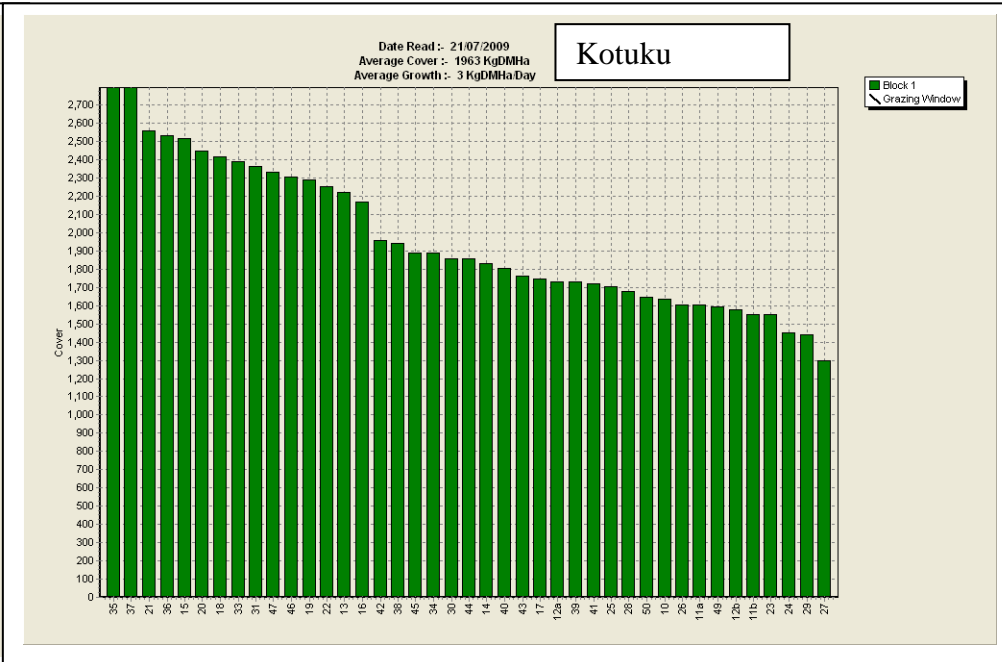
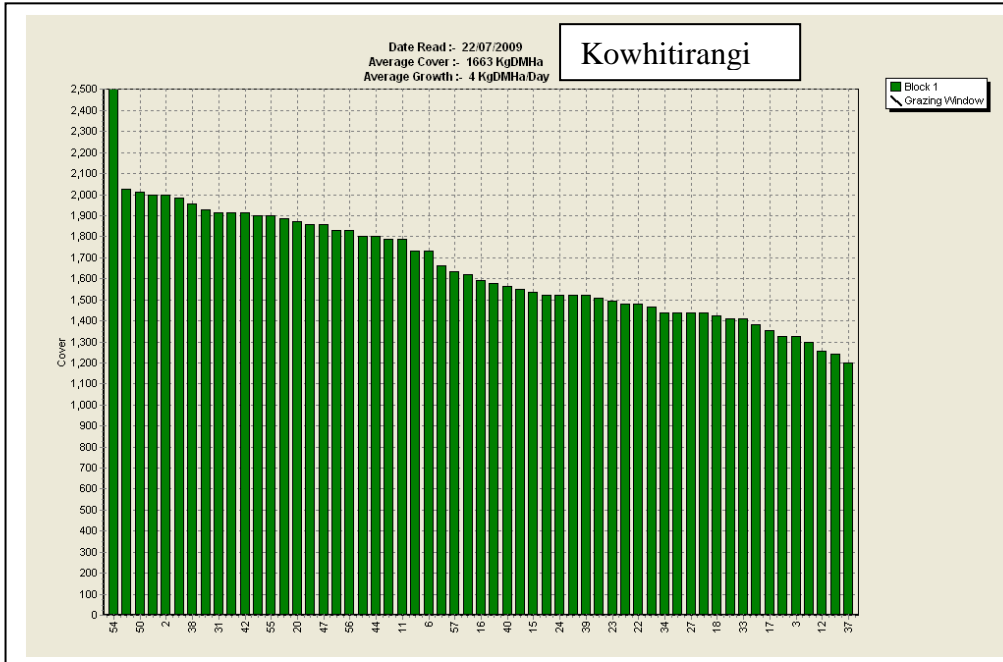
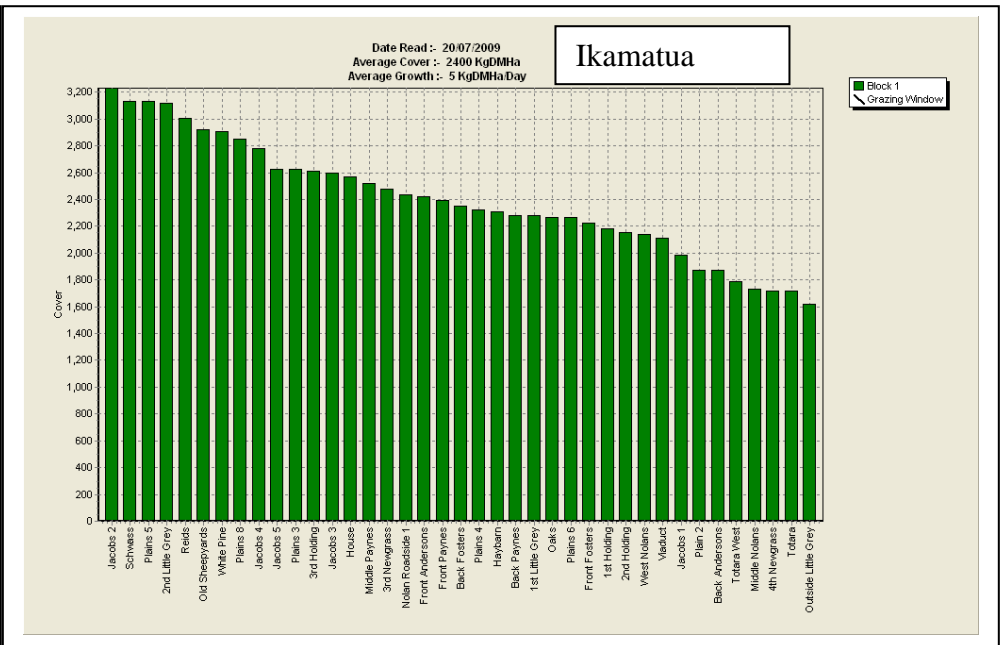
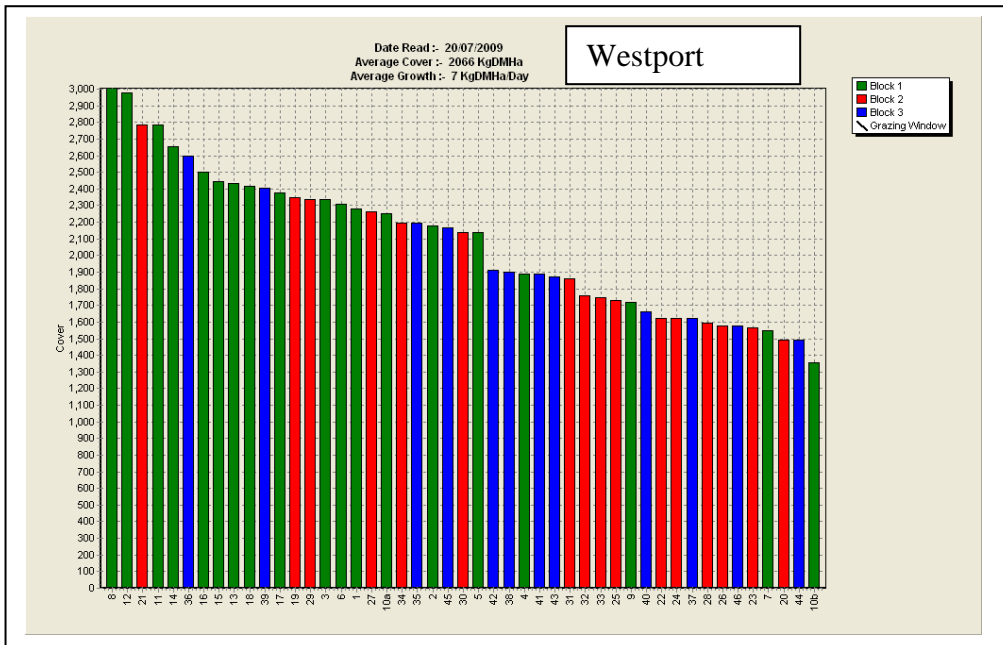
	Westport	Ikamatua	Kotuku	Kowhitirangi
Average cover (kg DM/ha)	2066	2400	1963	1663
Rotation length (days)	152	-	-	150
Stocking rate	-	-	-	-
Milksolids kg/cow	-	-	-	-
Milksolids kg/ha	-	-	-	-
N (kg/ha)	-	-	-	-
Supplement (kg/cow/day)	2.9	-	-	4.5
Soil temperature (°C)	6.9	6.0	7.0	6.7
Growth Rate (kg DM/day)	7	5	3	4
Rainfall	-	89	-	130

Pasture Growth Rates



Soil Temperature



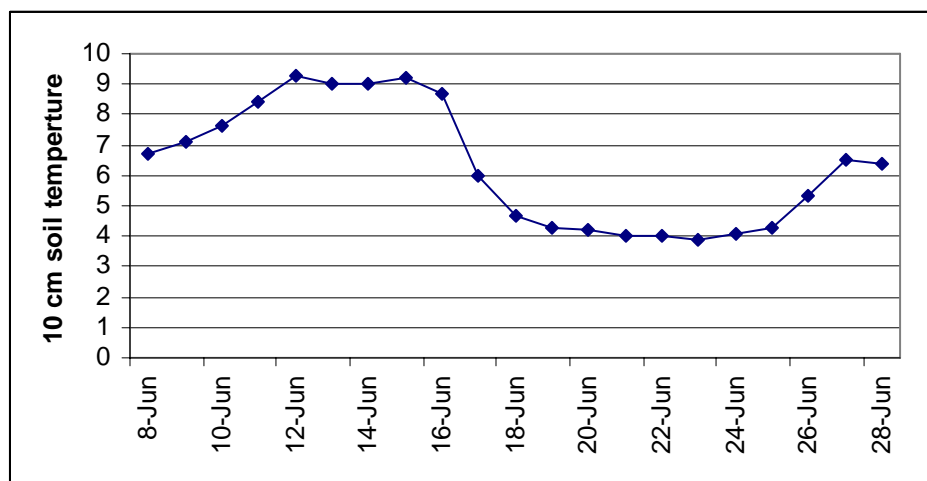


Westland Monitor Farm Project

Weekly Update – 1 July 2009

General Comments

Negligible growth has been recorded across the region over the last 3 weeks. The highest growth was recorded at Westport and the lowest in Kotuku. Soil temperatures declined in all regions however in Ikamatua where the temperature is recorded daily there was considerable variation in soil temperature (Figure below).



The Westport and Kowhitirangi farms are wintering the cows on the milking platform although the Kowhitirangi farm is using a covered standoff area for standing the cows off during wet conditions. Both these farms are on rotations above 150 days.

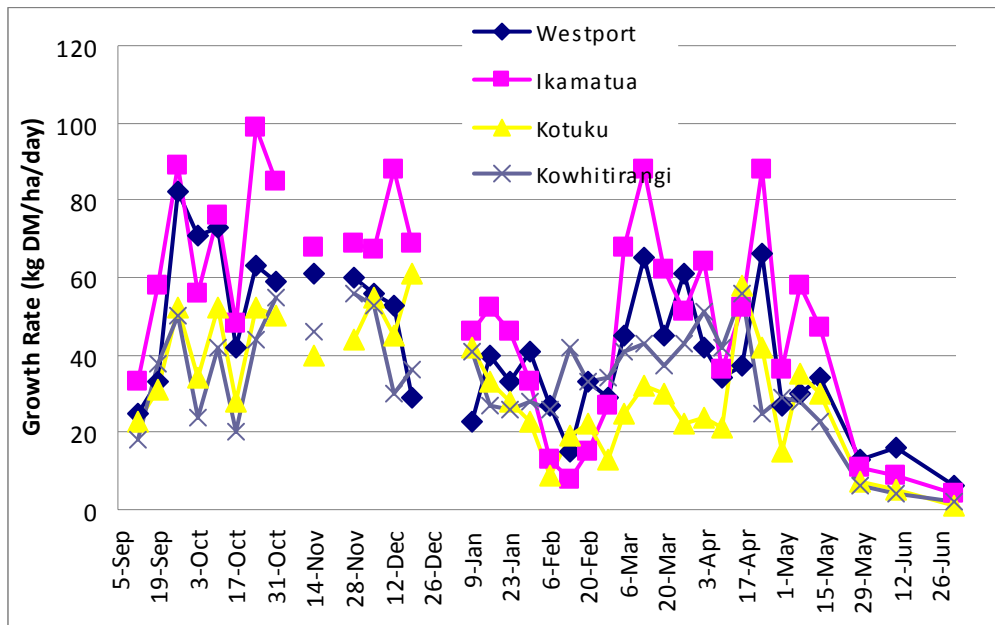
CO comment

It is time to plan your spring pasture management. Pasture management in the first 2 months after calving has a large impact on production to December. Use the Spring Rotation Planner (SRP) to assist with allocation of your grazing area from calving until balance date. The SRP calculator is available at www.dairynz.co.nz

Farm Summary

	Westport	Ikamatua	Kotuku	Kowhitirangi
Average cover (kg DM/ha)	2079	2306	1912	1717
Rotation length (days)	157	-	-	150
Stocking rate	-	-	-	-
Milksolids kg/cow	-	-	-	-
Milksolids kg/ha	-	-	-	-
N (kg/ha)	-	-	-	-
Supplement (kg/cow/day)	1.5	-	-	2.9
Soil temperature (°C)	-	6.4	5.3	3.9
Growth Rate (kg DM/day)	6	4	1	2
Rainfall	-	72	-	148

Pasture Growth Rates



Soil Temperature

