

# Westland Monitor Farm Project

## Weekly Update – 21 July 2010

Early winter growth across the region was higher than winter 2009. In the last 3 weeks average growth has been similar to last winter. Soil temperatures have on average been higher than winter 2009, especially for Westport and Kowhitirangi.

The Westport and Kowhitirangi farms have wintered a significant proportion of the herd on the farm. Kotuku have had 128 cows on the milking platform over the winter.

Average pasture cover has continued to increase on the Ikamatua farm but has declined on all other farms since 28 May. In comparison to the 2009 winter APC on the Ikamatua farm is 48 kg DM/ha higher while it is between 16 and 75 kg DM/ha less on the other farms with the Kotuku farm having the largest difference. The Ikamatua and Westport farms have paddocks in the wedge above 3000 kg DM/ha. In contrast the highest mass paddock at Kowhitirangi is only 2500 kg DM/ha.

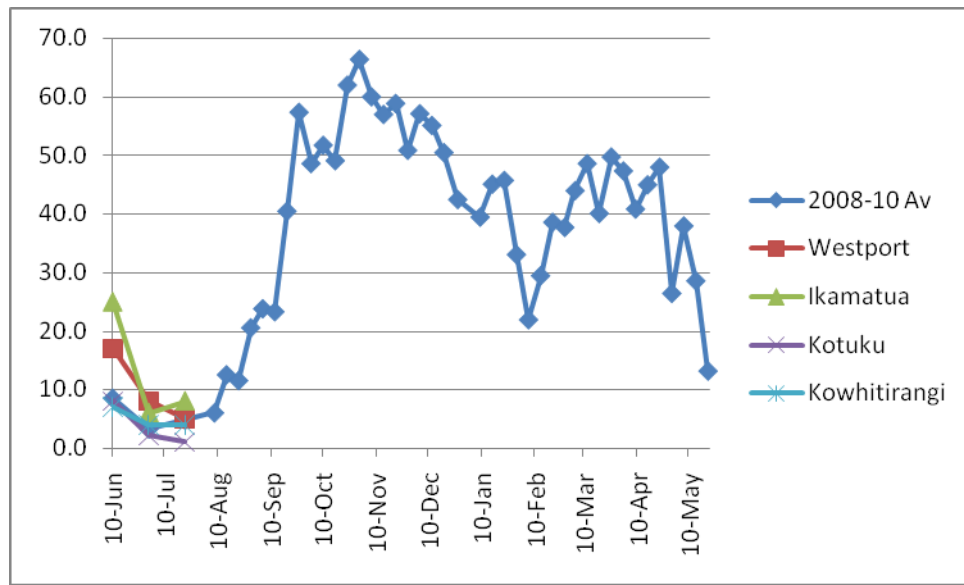
### CO comment

Magnesium supplementation to dry cows should have commenced to prevent grass staggers. Supplementation options include dusting Mg oxide onto pasture, mixing Mg oxide in silage, including Mg chloride or sulphate in drinking water or through Mg bullets (rumbuls, rumetrace). Remember prevention is better than cure. Talk with your local vet for a mineral supplementation programme and go to [www.dairynz.co.nz](http://www.dairynz.co.nz) for a copy of the Mg supplementation farmfact.

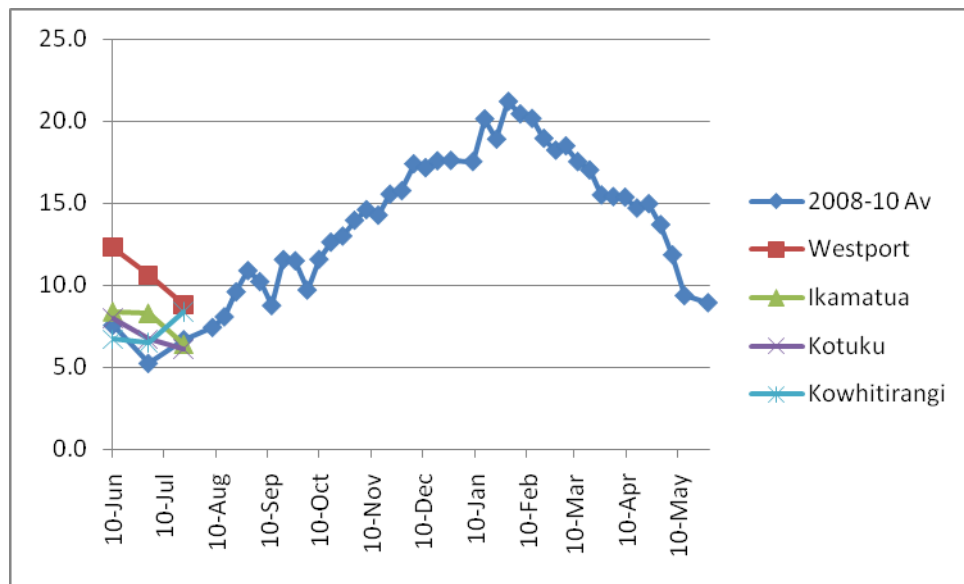
### Farm Summary

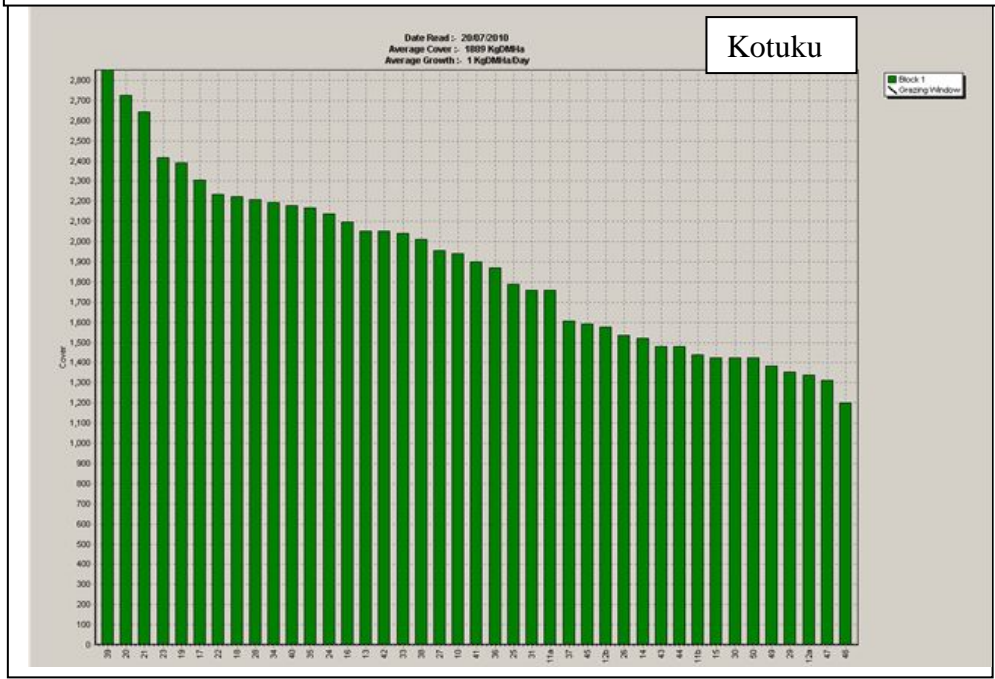
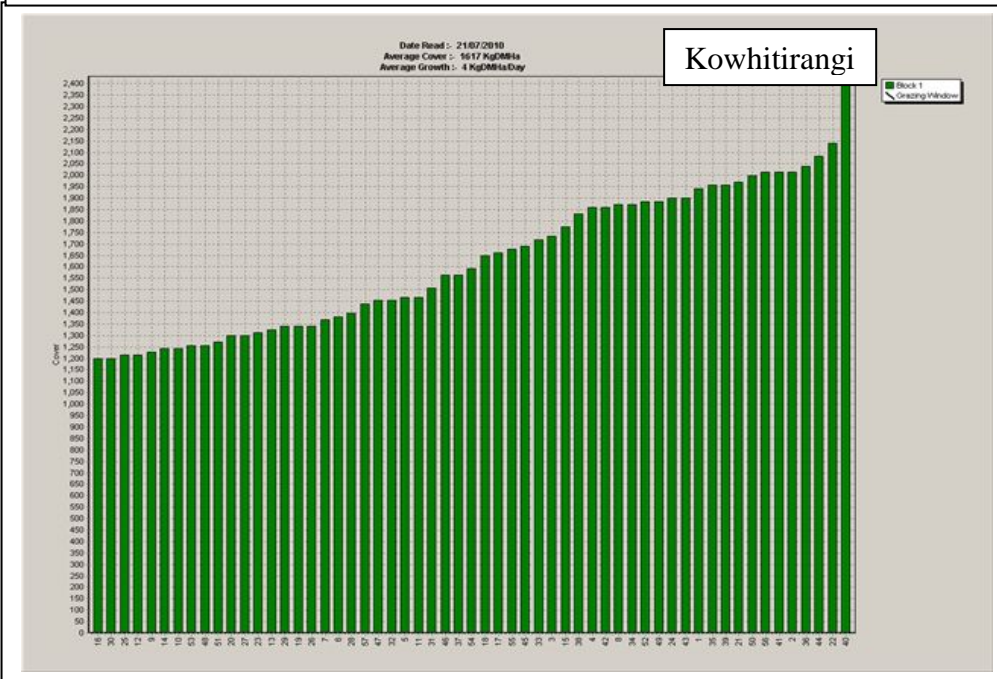
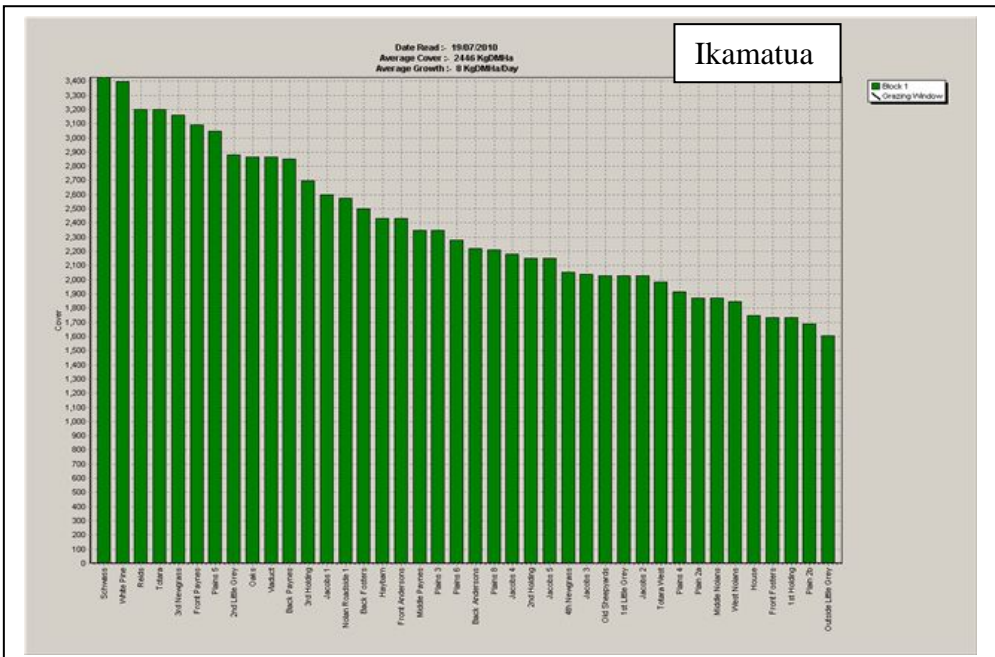
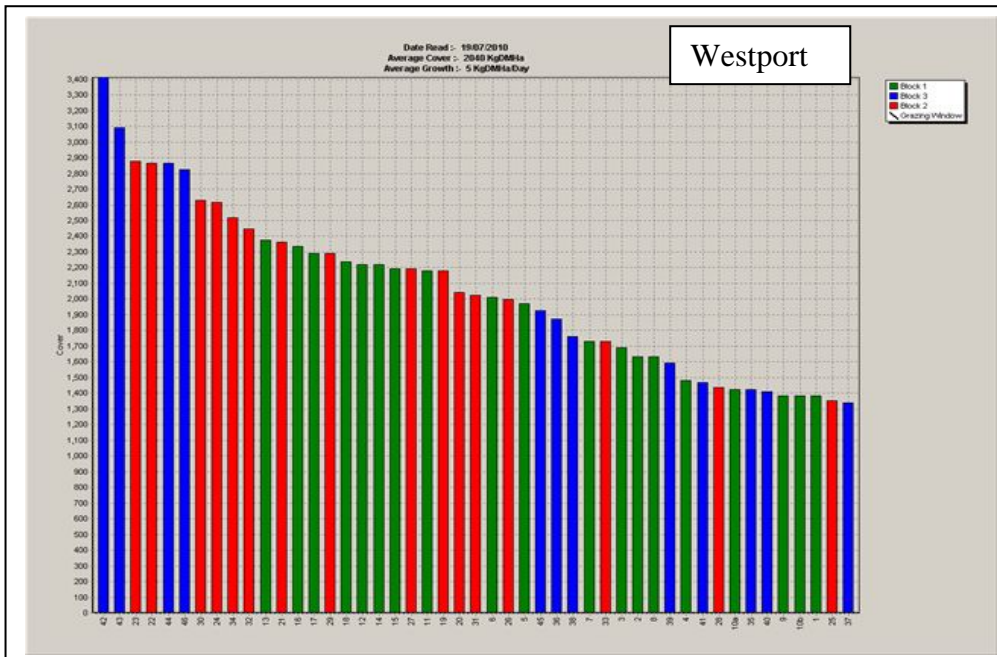
	Westport	Ikamatua	Kotuku	Kowhitirangi
<b>21 July</b>				
Average cover (kg DM/ha)	2040	2448	1889	1617
Rotation length (days)	160	-	600	120
Stocking rate	2.7	-	0.3	4.4
% in milk	0	0	0	0
Milksolids kg/cow	-	-	-	-
Milksolids kg/ha	-	-	-	-
N (kg/ha) year to date	-	-	-	-
Supplement (kg/cow/day)	2.9	-	5	4.5
Soil temperature (°C) 21 Jul	8.8	6.4	6.1	8.4
Growth Rate (kg DM/day)	5	8	1	4
Rainfall	-	59	-	93
<b>30 June</b>				
Average cover (kg DM/ha)	2138	2303	1920	1661
Soil temperature (°C)	10.6	-	6.7	6.5
Growth Rate (kg DM/day)	8	6	2	4
<b>9 Jun</b>				
Average cover (kg DM/ha)	2116	2175	1933	1714
Soil temperature (°C)	12.3	8.4	8	6.7
Growth Rate (kg DM/day)	17	25	8	7

## Pasture Growth Rates



## Soil Temperature





## Pasture Quality

NOTE: We sample the paddocks immediately in front of the milkers, to height of 3.5cm (7 clicks on the rising plate meter). The RPM data in the table is the pre-grazing clicks recorded on the day of sampling.

### Westport

Description	Date	RPM	% prot	% Lipid	% SSS	% NDF	% ADF	OMD	MJME/kg DM	%DM
Pdk 42	8 Jun	16.7	30.1	4.0	12.9	43.7	23.2	85.1	12.5	18.3
Pdk 9	8 Jun	12.9	26.3	4.2	17.0	39.8	20.7	88.2	>12.7	17.5
Pdk 28	21 Sep	17.3	25.3	4.5	19.0	43.8	23.5	86.3	12.7	14.5
Pdk 23	21 Sep	28.0	20.9	4.7	21.6	45.9	24.2	85.4	12.6	16.3
Pdk 5	25 Oct	15.8	30.4	5.2	12.4	44.5	24.2	84.9	12.5	13.9
Pdk 30	25 Oct	15.2	22.7	4.5	14.7	44.3	24.0	81.5	12.1	15.4
Pk 45	27 Nov	8.9	21.9	3.8	14.4	56.2	27.3	78.9	11.7	16.0
Pk 25	27 Nov	12.0	27.6	3.9	16.1	45.8	23.2	86.5	12.7	14.8
Pdk 22	11 Jan	17.0	30.4	4.9	13.3	47.1	25.0	84.0	12.1	12.4
Pdk 8	11 Jan	16.1	26.0	3.7	17.8	47.8	25.9	84.0	12.1	13.6
Pdk 44	8 Feb	13.8	24.1	4.5	11.7	54.9	26.9	79.0	11.7	18.2
Pdk 43	8 Feb	14.3	33.1	5.8	9.7	42.9	23.7	81.8	11.5	17.9
Pdk 13	8 Mar	14.2	30.3	4.7	13.8	47.7	23.0	>85	12.7	15.6
Pdk 5	8 Mar	15.2	28.0	4.8	16.0	47.6	24.5	>85	12.5	17.3
Pdk 20	12 Apr	16.8	29.4	4.2	15.1	45.8	23.0	>85	>12.7	14.7
Pdk 28	12 Apr	14.8	31.0	4.8	13.5	45.6	23.3	>85	>12.7	13.3
Pdk 22	3 May	22.3	28.4	5.1	12.9	47.8	24.1	83.2	11.9	12.0
Pdk 29	3 May	16.0	29.7	5.2	12.0	47.8	23.3	82.9	11.7	11.3

### Ikamatua

Description	Date	RPM	% prot	% Lipid	% SSS	% NDF	% ADF	OMD	MJME/kg DM	%DM
Schwass	8 Jun	18.0	23.3	3.6	21.6	37.9	20.4	87.5	>12.7	18.0
Jacob 2	8 Jun	18.9	23.6	4.6	17.4	38.5	22.6	81.9	12.1	18.9
Jacob 2	21 Sep	20.1	26.6	5.3	22.6	37.8	22.0	89.1	>12.7	19.2
4 Newgrass	21 Sep	14.1	28.3	5.6	20.0	40.0	21.3	91.2	>12.7	18.7
Old Sheep yards	20 Oct	24.3	22.2	5.3	14.1	44.8	24.3	82.0	12.0	18.2
Roadside	20 Oct	17.5	20.6	5.6	18.1	40.3	23.6	82.3	11.9	16.1
Reids	27 Nov	19.9	24.4	3.9	19.1	46.3	24.6	86.2	>12.7	15.8
Plain 6	27 Nov	20.8	25.1	4.8	21.6	42.2	19.5	91.9	>12.7	14.7
4 Newgrass	11 Jan	20.5	24.3	4.6	20.7	42.4	22.8	>85	>12.7	16.4
West Nolan	11 Jan	21	26.8	4.6	17.4	51.0	24.8	84.3	12.4	13.8
Totara East	8 Feb	18.3	26.1	5.3	16.1	49.9	23.6	83.5	12.3	16.3
Totara W	8 Feb	17.8	19.6	4.8	20.0	48.9	23.4	82.4	12.2	19.2
Outside Little Grey	8 Mar	15.0	27.4	3.9	15.1	48.7	23.4	83.7	>12.7	18.4
Back Foster	8 Mar	17.9	25.7	4.4	16.3	47.8	24.2	82.4	12.2	
Schwass	12 Apr	16.8	28.0	4.9	21.5	42.4	24.0	>85	>12.7	17.0
Reids	12 Apr	20.6	29.4	5.3	21.3	38.6	21.5	>85	>12.7	17.7
Jacob 1	3 May	17.9	30.1	5.9	15.8	44.8	22.2	>85	>12.7	12.9
Jacob 3	3 May	18.7	29.8	5.8	16.6	42.3	22.6	>85	12.6	13.6

## Kotuku

Description	Date	RPM	% prot	% Lipid	% SSS	% NDF	% ADF	OMD	MJME/kg DM	%DM
Pdk 33	10 Jun	13.4	28.2	4.2	12.4	46.5	22.8	85.6	12.6	14.3
Pdk 35	10 Jun	15.9	23.4	4.1	13.3	43.9	24.0	81.3	12.0	14.0
Pdk 22	22 Sep	12.7	27.6	5.2	18.9	40.0	22.2	88.5	>12.7	14.9
Pdk 38	22 Sep	11.6	28.8	5.6	16.6	39.1	21.9	88.0	12.7	14.6
Pdk 17	21 Oct	17.8	24.1	5.1	15.6	45.4	23.8	84.0	12.2	14.9
Pdk 20	21 Oct	18.9	23.5	4.8	15.0	46.5	25.2	82.0	11.8	15.4
Pdk 18	27 Nov	17.0	22.4	3.5	16.5	55.8	28.4	80.7	12.0	15.5
Pdk 25	27 Nov	20.3	18.4	3.5	14.8	60.5	30.0	72.8	11.0	18.9
Pdk 41	12 Jan	9.9	29.2	5.1	16.2	43.9	24.7	85.1	12.3	14.7
Pdk 15	12 Jan	12.9	25.3	5.3	16.5	46.5	23.7	81.9	12.0	14.2
Pdk 30	9 Feb	13.4	27.3	4.7	11.8	53.8	26.3	78.2	11.0	18.6
Pdk 25	9 Feb	9.1	25.7	4.8	6.4	62.2	29.6	71.1	9.9	16.5
Pdk 29	9 Mar	15.4	31.1	4.1	13.7	48.6	22.8	>85	12.7	14.6
Pdk 40	9 Mar	13.7	29.1	4.5	13.8	50.0	22.4	>85	>12.7	16.5
Pdk 46	13 Apr	15.7	25.6	4.6	20.8	43.4	23.5	>85	>12.7	17.8
Pdk 49	13 Apr	11.8	28.1	5.1	16.8	44.8	22.9	>85	>12.7	14.6
Pdk 29	4 May	12.4	27.9	5.3	14.3	51.0	24.5	84.0	12.1	13.2
Pdk 31	4 May	12.8	26.2	5.0	13.2	50.2	24.3	84.5	12.2	13.0

## Kowhitirangi

Description	Date	RPM	% prot	% Lipid	% SSS	% NDF	% ADF	OMD	MJME/kg DM	%DM
Pdk 22	10 Jun	15.7	23.9	4.1	14.8	44.4	21.6	85.4	>12.7	12.4
Pdk 28	10 Jun	13.3	28.6	4.8	14.2	39.2	20.0	86.4	>12.7	12.4
Pdk 28	23 Sep	13.9	35.6	6.3	14.4	35.1	21.4	91.3	>12.7	11.5
Pdk 11	23 Sep	11.2	29.0	5.6	17.9	39.4	22.2	89.2	>12.7	11.3
Pdk 14	22 Oct	11.7	26.5	5.8	11.7	43.6	23.8	82.1	11.9	14.5
Pdk 3	22 Oct	12.2	27.3	5.9	14.4	35.3	22.4	83.9	12.1	13.6
Pdk 19	27 Nov	19.1	19.2	4.0	21.0	47.2	25.2	83.3	12.3	17.9
Pdk 40	27 Nov	15.3	24.3	4.5	17.9	49.0	24.7	85.8	12.6	13.7
Pdk 20	13 Jan	13.8	16.2	3.6	26.2	49.0	25.5	84.6	>12.7	16.2
Pdk 24	13 Jan	12.7	19.1	4.3	21.5	47.7	24.2	82.6	12.4	16.5
Pdk 5	10 Feb	17.3	25.4	4.8	11.6	48.2	24.6	79.4	11.3	13.1
Pdk 21	10 Feb	13.5	26.4	5.0	13.2	48.7	25.3	80.6	11.5	13.9
Pdk 15	10 Mar	12.9	27.9	4.3	14.4	46.9	24.4	84.0	12.2	14.2
Pdk 40	10 Mar	13.7	30.4	4.1	13.3	47.7	26.0	84.4	12.1	12.4
Pdk 7	14 Apr	16.0	31.6	5.4	12.3	42.4	22.8	>85	>12.7	11.6
Pdk 40	14 Apr	15.9	30.6	5.5	14.8	40.6	22.4	>85	12.6	11.7
Pdk 4	5 May	12.0	28.3	5.4	14.6	42.7	23.3	83.3	11.9	11.5
Pdk 18	5 May	12.0	28.6	6.0	17.3	38.2	22.8	>85	12.4	11.6