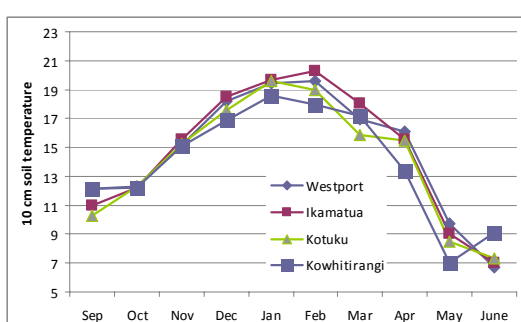
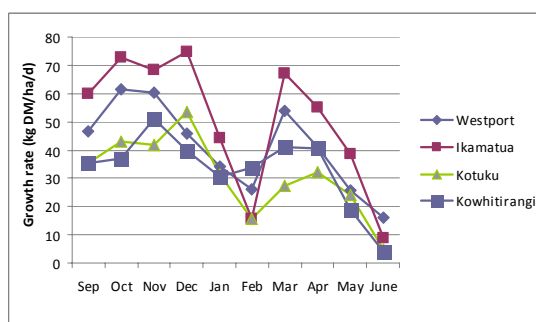


Westland Monitor Farm Project

Weekly Update – 10 June 09

General Comments

Growth rates have remained below 20 kg DM/ha/day over the last 2 weeks. The highest growth was recorded at Westport and the lowest in Kowhitirangi. Soil temperatures declined in all regions except Kowhitirangi where the highest temperature (9.1 °C) was recorded. The Westport and Kowhitirangi farms are wintering the cows on the milking platform although the Kowhitirangi farm is using a covered standoff area for standing the cows off during wet conditions. Both these farms are on rotations above 150 days. Summary graphs below show the trends in soil temperature and growth rate on a monthly basis for the 4 regions since the project commenced in September 2008.



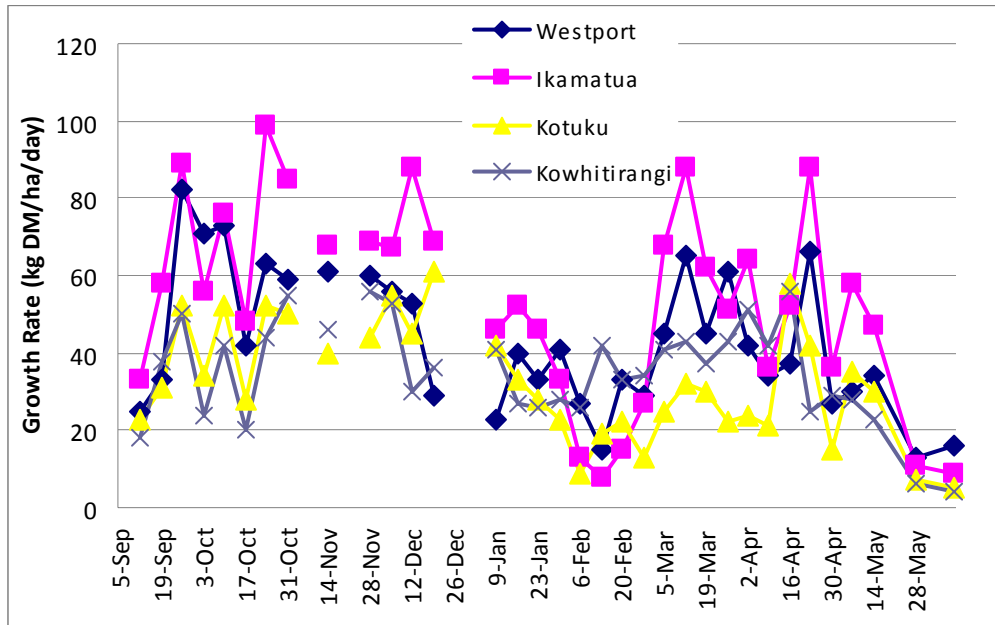
CO comment

This is the time to orientate new staff within the farm business. In the first few weeks it is important that new staff have clarity on their roles and other team members. Take the time now with the rest of the team to go over farm policies, targets and update OSH manuals. Ensure calf rearing facilities are up to date and any repairs and maintenance is programmed in for this next week.

Farm Summary

	Westport	Ikamatua	Kotuku	Kowhitirangi
Average cover (kg DM/ha)	2122	2212	1884	1856
Rotation length (days)	200	-	-	158
Stocking rate	2.71	0	0	2.32
Milksolids kg/cow	-	-	-	-
Milksolids kg/ha	-	-	-	-
N (kg/ha)	0	0	0	0
Supplement (kg/cow/day)	1.5	-	-	4
Soil temperature (°C)	6.7	7.0	7.3	9.1
Growth Rate (kg DM/day)	16	9	5	4
Rainfall	15	16	-	99

Pasture Growth Rates



Soil Temperature

