

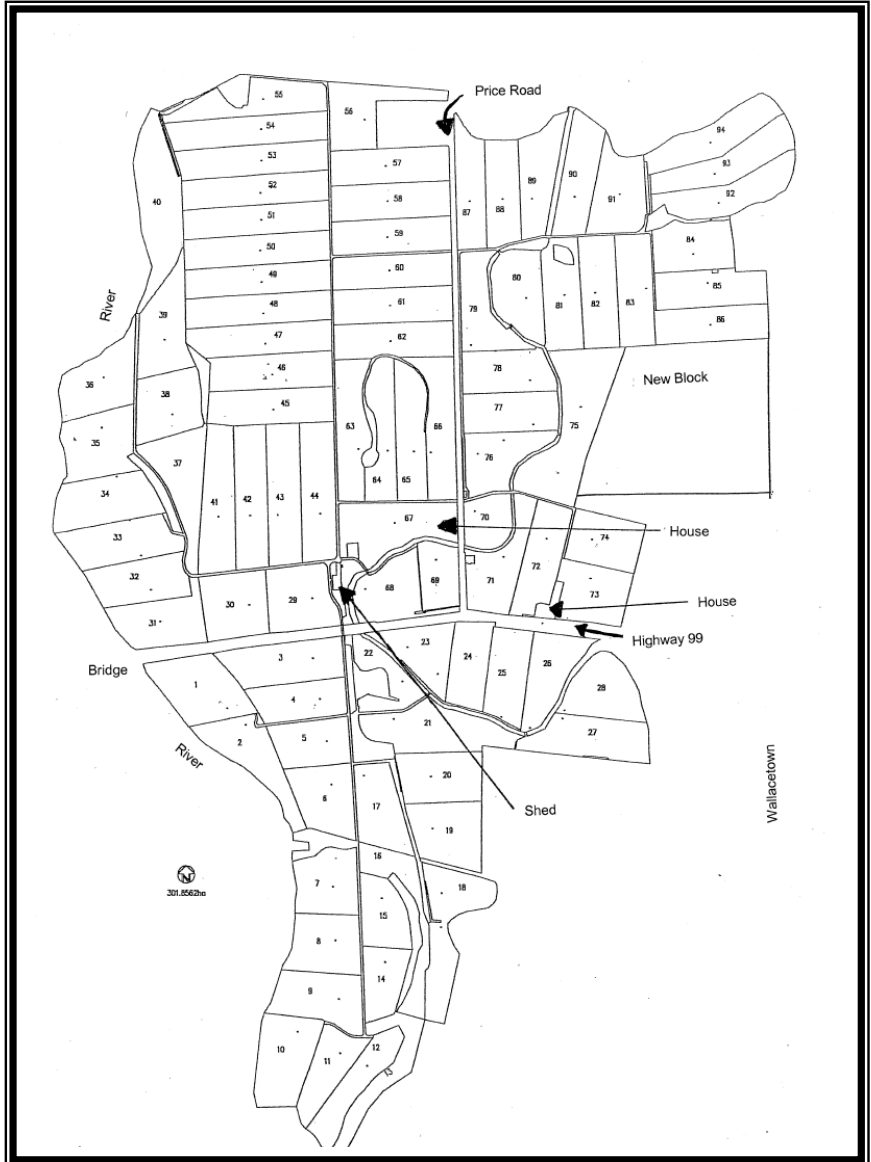


105 Wallacetown-Riverton Highway

Partnering with:



Research & Extension support from:



### STAFF

**Barry Bethune - Farm Manager**  
**Sherwyn Calos - 2 IC**  
**Dexter Mag-Abo - Farm Assistant**  
**Jerome Pellazar - Farm Assistant**

For further detail visit the SIDDC website

[www.siddc.org.nz](http://www.siddc.org.nz)

'Sthld Demo Farm'

Re information on the Farm Walk Notes, Weekly Data, Production graphs, Monitor Farm Weekly Summaries etc.

### HAZARDS NOTIFICATION

1. Children are the responsibility of their parent or guardian
2. Normal hazards associated with a dairy farm
3. Other vehicle traffic on farm roads and races
4. Crossing public roads, including busy State Highway
5. Underpasses may be slippery

Please follow instructions given by event organisers or farm staff

## VISION STATEMENT

**Economical, social and environmental sustainable solutions for the Southern South Island dairy farming community.**

### KEY OBJECTIVES

1. Economic sustainability [profit] of Southern South Island dairying.
2. Environmental sustainability [land, water, animals] of Southern South Island dairying.
3. Social sustainability [labour] of Southern South Island Dairying.
4. To provide a central focal point for the dissemination of information to assist farmers to meet the challenges going into the future.

### INTRODUCTION

The 295 hectare property was leased by Southland Demonstration Farm Limited, controlled by the Southland Demonstration Dairy Farm Trust, on 1<sup>st</sup> June 2007, to operate as a commercial demonstration farm which provides a focal point for the dissemination of information to Southern South Island dairy farmers.

The milking platform is 254 ha, and the property runs 750 cows. Around 35-40 hectares of brassicas are grown on the property for winter feed. The property supplies Fonterra's Edendale Factory targeting annual production of 335,000 kg/MS [1300 kgMS/ha].

### CLIMATE

	Spring	Summer	Autumn	Winter	Annual
Mean Annual Maximum Temperature (°C)	14	18	15	10	14
Mean Annual Minimum Temperature (°C)	5	9	5	1	5
Mean daily temperature (°C)	10	13	10	5	10
Annual rainfall – 2006/07 season	Sep/Oct/Nov 99/77/139	Dec/Jan/Feb 67/80/36	Mar/Apr/Ma y 21/83/54	Jun/Jul/Aug 132/76/72	1036

### HERD DETAILS

Breeding Worth: 116

Production Worth: 121

Genemark DNA for the last 3 years.

### MATING PROGRAMME

Cows AI for 6 weeks followed by 5 weeks with Hereford bulls. Heifers all AI to Friesian bull for 2 weeks and run with Jersey bulls. Calving starts 10 August.

### SOIL

Soil Types	% Farm
Makarewa - Heavy poorly drained gley soil	42.0%
Makarewa moderately deep	8.0%
Mataura - Recent flood plain soil, Silty - Well drained	19.0%
Tomoporakau - Poorly drained silt loam prone to water logging	16.5%
Northope - Imperfectly drained silt loam, variations in topsoil	13.0%
Edendale - Deep well drained Soil, Silt Loam	1.0%
Gore – well drained alluvium base, Silt Loam topsoil	0.5%

### SOIL TEST RESULTS

Date	pH	P	K	Sulphate S	Ca	Mg	Na	Organic S	TBK
June 2007	6.1	30	7	8	10	23	13	6.5	1.8

### NITROGEN USE

Current Nitrogen Use: Approximately 170 kgN/ha/year.

# Southland Demonstration Dairy Farm Trust

## Southland Demonstration Farm Business Advisory Group

Abe de Wolde	Director, Farmer, Winton
David Dodunski	Director, Farmer, Isla Bank
Ivan Lines	Director, Farm Consultant, Invercargill
Stephen Brock	Farm Owner
Alan Maxwell	Farmer, Centre Bush
Allan Maxwell	Farmer, Edendale - SIDE Representative
Harley Churstain	Farmer
Robert Bruin	Farmer, Otautau
Grant Jackson	LIC
Ron Pellow	Executive Director, SIDDC, [Chairman]
Steve Dixon	Ravensdown
Vaughan Templeton	Telford
Peter Moynihan	Westpac
Wayne Nichol	Wrightson Seed
Jim Risk	Environment Southland
Barry Bethune	Farm Manager
Sharn Roskam	Farm Supervisor
Howard de Klerk	DairyNZ Business Developer

## Southland Demonstration Farm Limited

### Directors:

Abe de Wolde	Winton [Chairman]
David Dodunski	Isla Bank
Ivan Lines	Invercargill
Kevin Ferris	DairyNZ
Richard Christie	Ravensdown

### Trustees:

David Dodunski	Isla Bank
Lloyd McCallum	Wilsons Crossing
Abe de Wolde	Winton
Gene Marsh	Dipton
Alistair Megaw	Tapanui
John Lang	Wreys Bush

## Southland Demonstration Farm Management Team

Sharn Roskam	Farm Supervisor
Barry Bethune	Farm Manager
Howard de Klerk	DairyNZ Regional Leader

## Southland Demonstration Farm Staff

Barry Bethune	Farm Manager
Sherwyn Carlos	2 I C
Dexter Mag-Abo	Farm Assistant
Jerome Pellazar	Farm Assistant

## Southern South Island Monitor Farm Project

The Southern South Island has seen significant growth in dairying over the last 5-10 years. Rapid expansion has highlighted the scarcity of basic information on pasture growth and quality under dairy farming systems.

This project, 'Future proofing Southland dairy farm systems' (SFF 07/155), aims to generate pasture growth and quality and soil temperature information on four (4) commercial dairy farms in Southland/West Otago and on the Southland Demonstration Farm over the next three (3) years. The project is funded by the MAF Sustainable Farming Fund, DairyNZ, SIDE and Ravensdown's ARL Lab.

Each week a weekly summary of information from the following regions is posted on the SIDDC website ([www.siddc.org.nz](http://www.siddc.org.nz))

1. Coastal: Southland Demonstration Farm, 254 ha, 750 cows at Wallacetown
2. Eastern: K & D Hall, 146 ha, 430 cows at Edendale
3. Central: G & J van der Poel, 140 ha, 415 cows at Dunearn
4. Northern: A & I Frei, 137 ha, 290 cows at Riversdale
5. West Otago: D & M Goble, 136 ha, 340 cows at Tapanui

The monitor farms were chosen to have representative soil types, growing degree days and topography for their area. Each week the farms are walked and the pasture mass assessed in every paddock using the rising plate meter.

This information is used to generate pasture growth rates and a feed wedge for the farm. At the same time the soil temperature is recorded and every two (2) weeks pasture samples are collected for composition analysis.

The website provides a table that includes production per cow and per ha, supplements being fed, round length, average pasture cover, stocking rate, soil temperature, pasture growth rates and general comments.

Both the growth rate information and soil temperature data for each farm are presented in a graph form so people can quickly see trends and variations in both.

