

SDF Farm Walk Notes

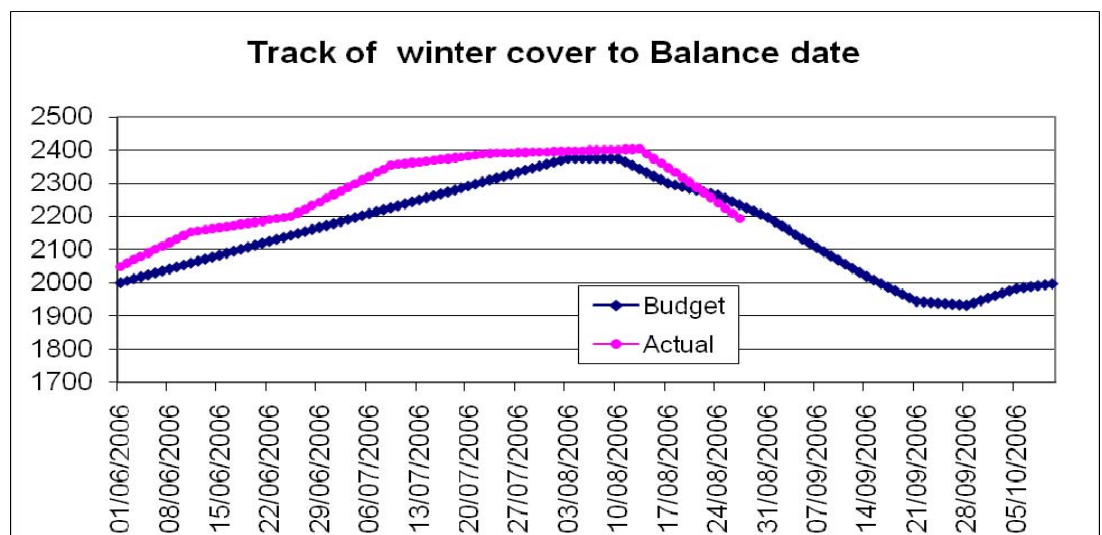
Wednesday, 27th Aug 2008

Critical issues for the short term

1. **Monitor dry cows for mastitis and treat any infected quarters.**
2. **Mg supplementation of all cows – through water supply and causmag.**
3. **Leave Mr Grumpy at home – maintaining staff morale and health is critical during this difficult and busy period. Insist on safety being a priority.**

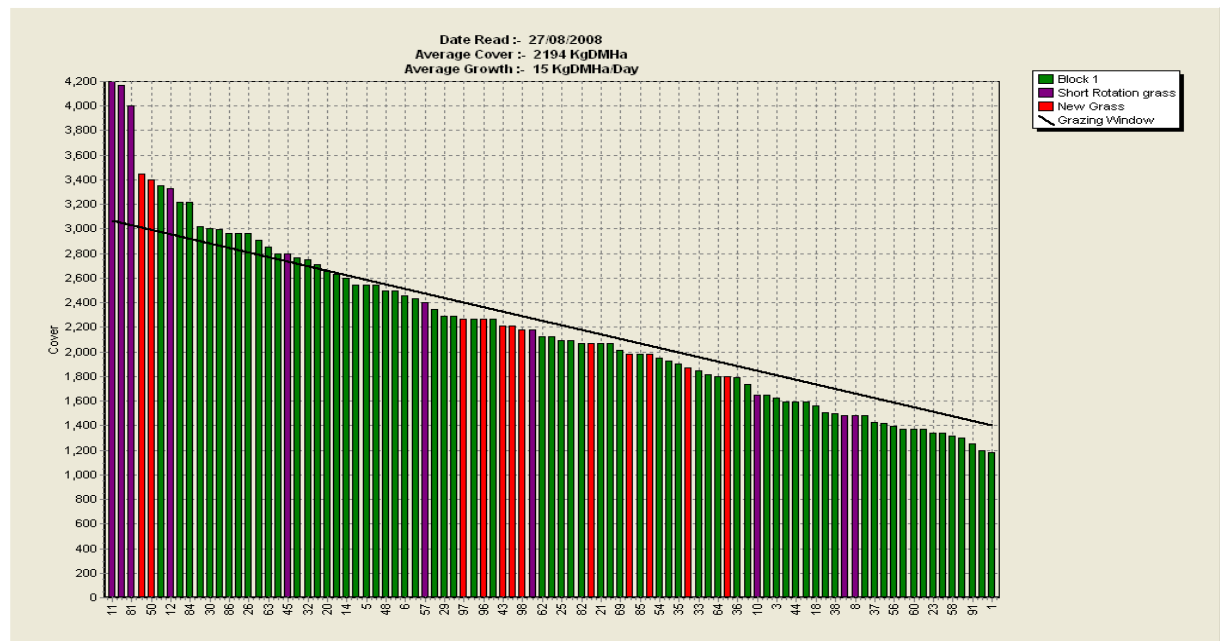
Summary of Key Factors affecting Grazing Management & Animal Performance

4. Soil temperatures have increased slightly to average just above 6 degrees C this week from 5 degrees C last week.
5. During rain the farm is very prone to pasture damage during grazing. However this changes quickly after a few days of fine weather. Ground conditions have now firmed up enough for fertiliser to now be spread.
6. Average pasture cover was 2194 kg DM/ ha on the farm walk today which is just below our target. The new perennial ryegrass and short rotation ryegrasses are growing very well for this time of the year, but some of the older type pastures continue to record much lower growth rates, even losing cover in some cases.
7. Average pasture growth rate for the last week has been 15 kg DM / ha /day (18 last week).
8. The graph comparing budgeted average pasture cover as predicted by the autumn feed budget with actual is shown below:



9. We are therefore very slightly below our target (target 2235 compared to actual 2194 kg DM / ha). Pasture coach records a negligible deficit of 7,700 kg DM total. Despite this we feel we are still nicely on track compared to the spring plan. We are also enjoying this settled patch of weather.

10. The 27 Aug pasture feed wedge:



The red bars are new perennial ryegrass pasture
The purple bars are new short rotation pasture

11. The target line is now based on the budget average cover for 27 Aug which is 2235. The wedge shows that 6 out of the 10 longest paddocks are new grass. These paddocks have been left because of the previous wet weather. These paddocks are firming up and we have scheduled to graze them this week as long as drier weather continues. The long range forecast is for settled conditions to continue.
12. A small deficit is appearing in the feed wedge on the bottom 2/3 of the feed wedge. We are not worried about this currently, because we can still slow the rotation down by grazing the longer paddocks at the top end of the wedge and fertiliser N is being applied to around half the pasture area, the bottom half of the wedge, today.
13. Due to fertiliser prices expected to rise again in September, we are bringing forward some of our phosphate fertiliser application and spreading 300 kg / ha superphosphate with 80 kg / ha of Urea. We have already covered more than 50% of the farm.
14. We have 447 calved and 376 now going into the vat.
15. Production is now 1.62 kg MS/ha/day (last week's per ha number was miscalculated) and 1.53 kg MS/cow/day.
16. We have 21 cows that we expect to induce – our late calvers expected to naturally calve between 10th October and 11th November (calving weeks 11 – 15). These will be drafted up and given their first shot on Friday.
17. We still have 140 cows grazing off farm, and expect all cows to be back from winter grazing by next week.
18. The next WEEKLY farm walk is on **Wednesday 27th Aug**. On behalf of the **Management Group** Brad Houghton (Farm Manager), Alex Hunter (Consultant), Adrian van Bysterveldt (DairyNZ), Josh Dobbs (Herd Manager).

SDF Farm Walk Notes

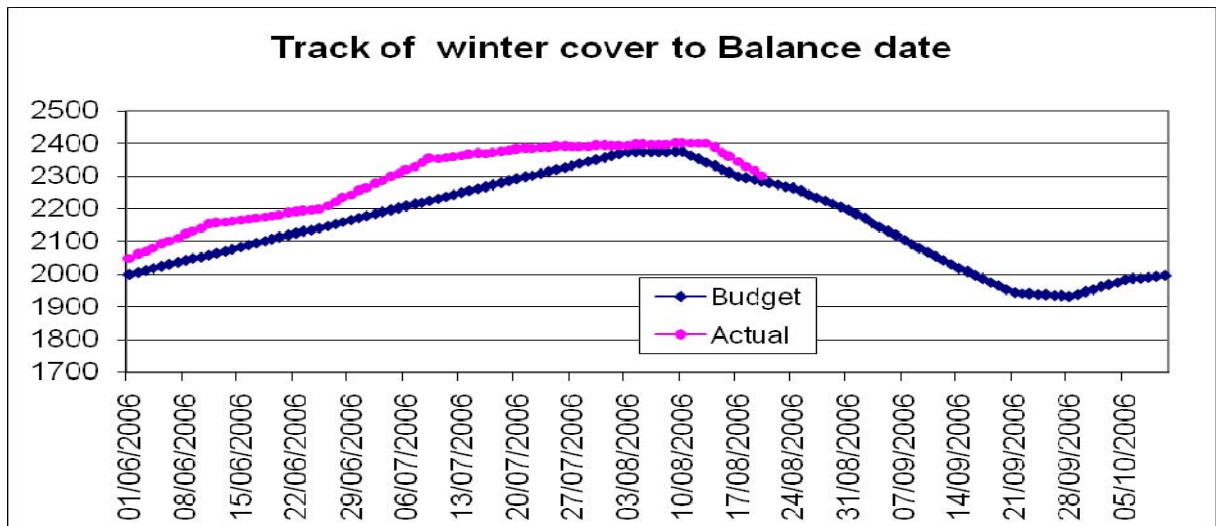
Wednesday, 20th August 2008

Critical issues for the short term

1. **Monitor dry cows for mastitis and treat any infected quarters.**
2. **Mg supplementation of all cows – through water supply and causmag.**

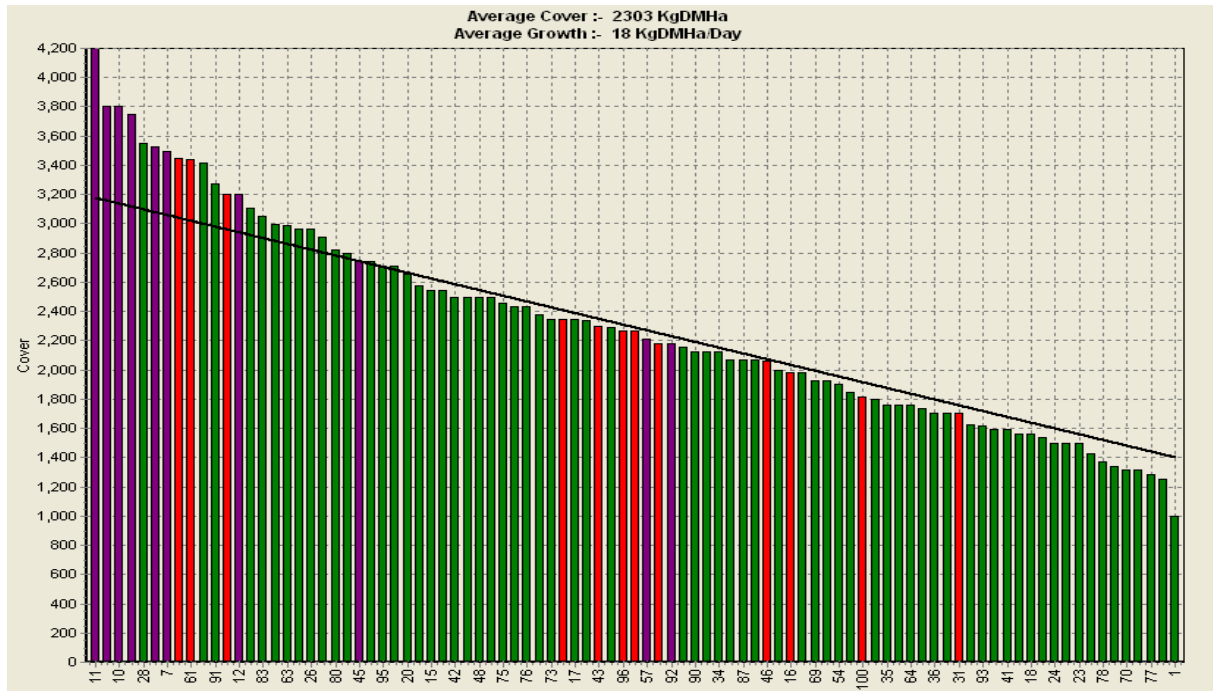
Summary of Key Factors affecting Grazing Management & Animal Performance
--

3. Soil temperatures have continued to average just below 5 degrees C this week.
4. During rain the farm is very prone to pasture damage during grazing but after two finer days, ground conditions are firming up nicely.
5. Average pasture cover was 2303 kg DM/ ha on the farm walk today which is just above our target. The new perennial ryegrass and short rotation ryegrasses are growing very well for this time of the year, but some of the older type pastures continue to have lost cover over the past week.
6. Average pasture growth rate for the last week has been 18 kg DM/ha/day (15 previous three weeks).
7. The graph comparing budgeted average pasture cover as predicted by the autumn feed budget with actual is shown below:



So far everything is still nicely on track. We will welcome some settled weather.

8. The 20 August pasture feed wedge:



The red bars are new perennial ryegrass pasture
The purple bars are new short rotation pasture

9. The target line is now based on the budget average cover for 20 August which is 2285. The wedge shows that 10 out of the 13 longest paddocks are new grass. These paddocks have been left because of the wet weather. These paddocks are very soft underfoot and we do not want to damage them.

10. We will graze these this week by putting cows in for between 4 to 6 hours between milkings and then moving them to nearby waste area.

11. We have 335 calved and 224 now going into the vat.

12. Production is now up to 2.10 kg MS/ha/day and 1.49kg MS/cow/day through the very unsettled weekend.

The next WEEKLY farm walk is on **Wednesday, 27th August.**

On behalf of the **Management Group** Brad Houghton (Farm Manager), Alex Hunter (Consultant), Adrian van Bysterveldt (DairyNZ), Josh Dobbs (Herd Manager).

SDF Farm Walk Notes

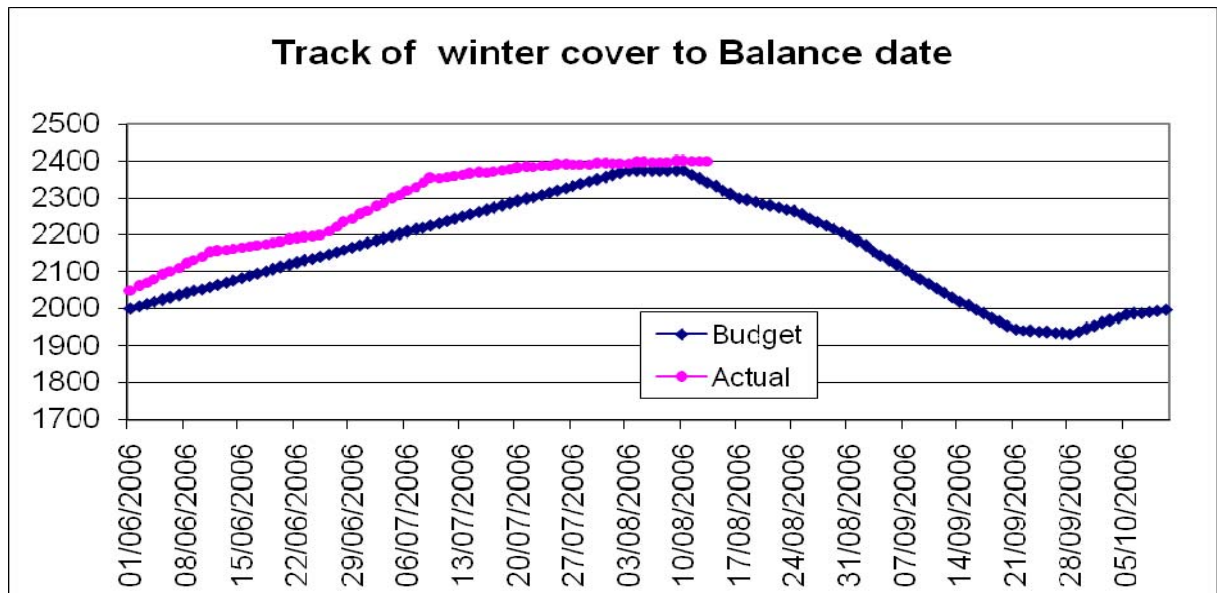
Wednesday, 13th August 2008

Critical issues for the short term

1. **Monitor dry cows for mastitis and treat any infected quarters.**
2. **Mg supplementation of all cows – through water supply and causmag.**

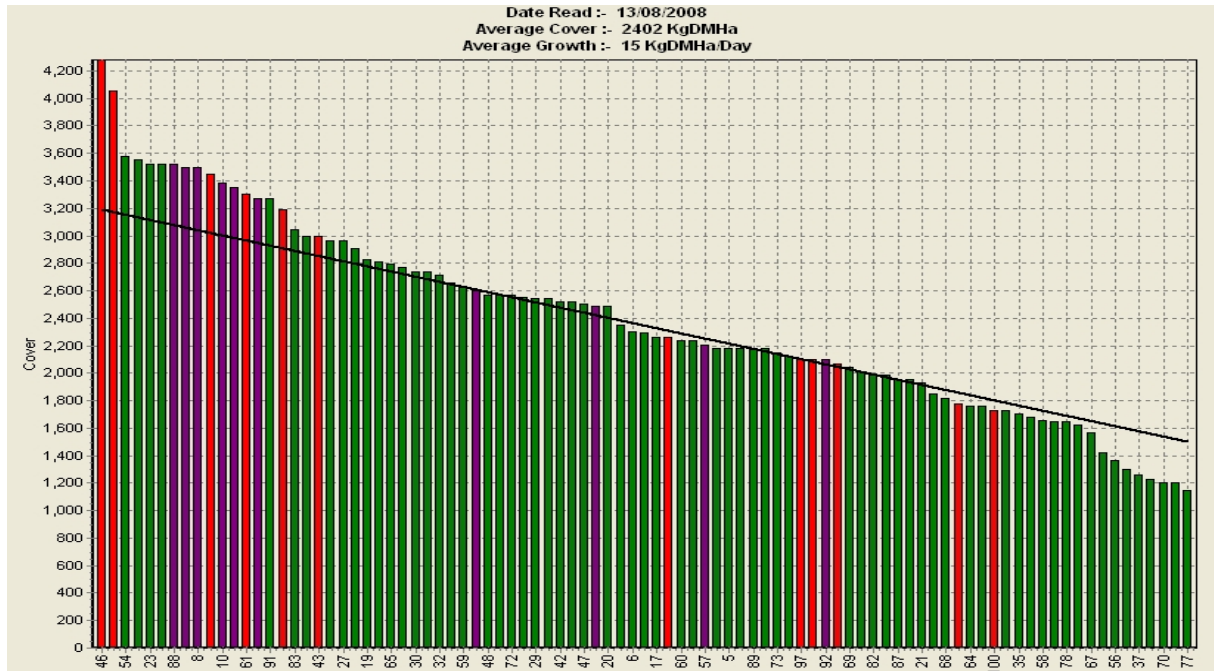
Summary of Key Factors affecting Grazing Management & Animal Performance
--

3. Soil temperatures have continued to average 5 degrees C for the last few weeks.
4. Rainfall is still slightly below average but even what we are getting needs careful management to prevent pasture damage.
5. Average pasture cover was 2402 kg DM/ ha on the farm walk today which is 60 kg/ha above our target. The new perennial ryegrass and short rotation ryegrasses are growing very well for this time of the year, but some of the older type pastures have lost cover over the past week.
6. Average pasture growth rate for the last three weeks has been 15 kg DM / ha /day which is above what we budgeted based on last year.
7. The graph comparing budgeted average pasture cover as predicted by the autumn feed budget with actual is shown below:



We continue to be above targeted cover, compared to the autumn / winter feed budget.

8. The 23 July pasture feed wedge:



The red bars are new perennial ryegrass pasture
The purple bars are new short rotation pasture

9. The target line is now based on the budget average cover for 13 August. The wedge shows that we have 16t more grass than target and again the short rotation ryegrass paddocks continue to progress up the wedge much faster than other paddocks.
10. Some shorter drier paddocks have been grazed during the recent wet weather leaving the longest paddocks. The ground is slowly getting drier so we will be carefully grazing the long paddocks especially the new grass paddocks.
11. We have begun spreading Causmag at 100gm /cow/day on the pasture and supplements being fed to our cows.
12. We have 210 calved and the first milk is now in the vat for pickup.

The next WEEKLY farm walk is on **Wednesday 20th August 2008.**

On behalf of the **Management Group** Brad Houghton (Farm Manager), Alex Hunter (Consultant), Adrian van Bysterveldt (DairyNZ), Josh Dobbs (Herd Manager).