

SDF Farm Walk Notes

Tuesday, 27 September 2011

Total Effective Ha: 295ha

Winter Crop Ha: 33ha

Area in Grass Ha: 262ha

CRITICAL ISSUES FOR THE SHORT TERM

1. Pasture allocation during 2nd round
2. Appropriate supplementation according to residual
3. Preventing damage to paddocks in wet weather
4. Animal health issues around calving
5. Calf rearing management

COW NUMBERS

1. 763 cows on farm – 0 deaths – 7 deaths to date & 19 culls.
2. 678 cows have calved – 36 in past week.
3. 619 milked TAD; 33 in colostrum mob; 26 in penicillin mob.
4. 85 Springers on grass.

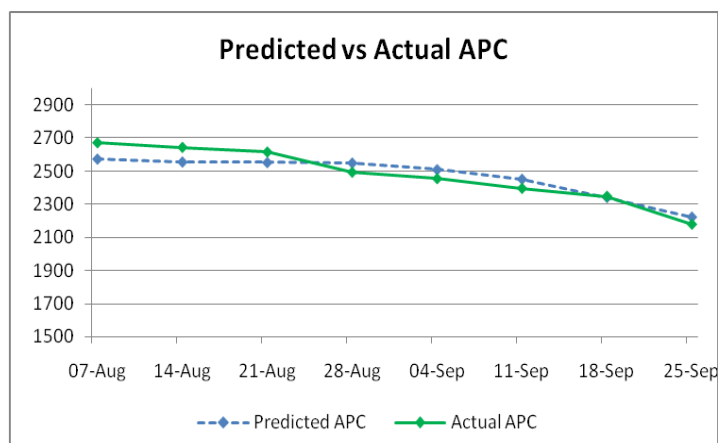
MILK PRODUCTION

	This week	↑ or ↓ compared to last week	↑ or ↓ compared to last year
Per cow (kgMS/cow/day)	1.9	↓ 0.09	
Per ha (kgMS/ha/day)	4.31	↑ 0.12	
kgMS/day	1130	↑ 32	
Month to date %			↓ 11
Season to date %			↓ 3.4

5. 34,994 kgMS delivered to date. Production is currently behind last season due to a slower calving pattern, but this should turn around in the next week.
6. SCC 130k cells/ml.

PASTURE MANAGEMENT AND FEEDING LEVELS

7. Colostrum and milkers offered 95m²/day - no silage.
8. Springers offered 50m²/day with no silage.
9. This week 52.5 ha were used – 35 day round – 54 ha and a 34 day round was budgeted.
10. APC ended slightly lower than predicted. This was due to slower growth rates in past week.
11. The in-shed feeder has been installed and a small amount of 70% PKE: 30% Barley mix has been trickled into the system to get the cows used to the feed.



FIRST ROUND, PRE-GRAZING COVERS and APC

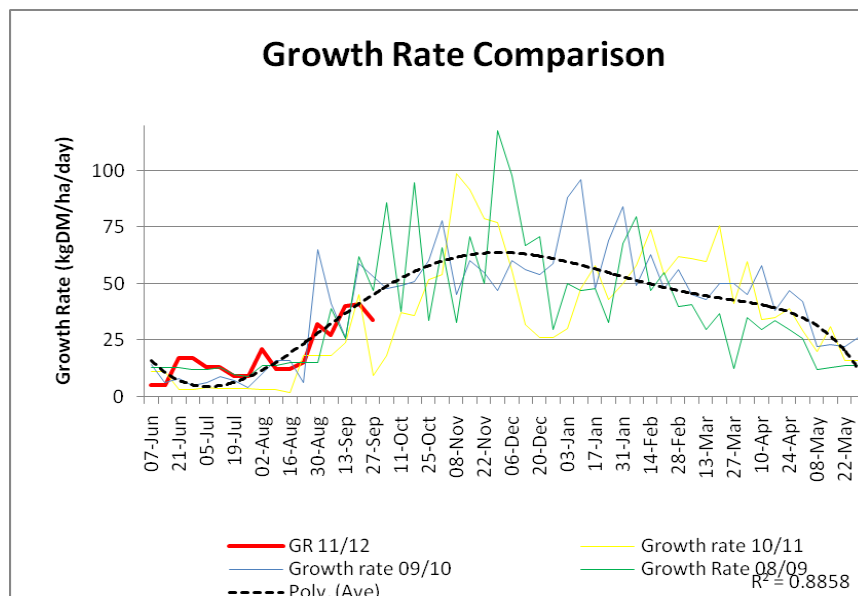
1. The first round was completed on 27th September as per plan – i.e. all paddocks were grazed for the first time since 1 August.
2. Winter growth and early spring growth was saved and pushed forward to feed the cows for the first 57 days in spring. (1 Aug – 27 September) The area was divided pro-rata according to projected daily demand.
3. The pre-grazing requirement for cows at the start of the 2nd round is determined as follows:

$$\text{Stocking rate (2.9)} \times \text{Intake/cow (18kg)} \times \text{Round length (25 days)} + \text{residual (1600kgDM)} = 2900\text{kgDM}$$
 To adequately feed cows during the 2nd round cows need to be going into covers of 2,900kgDM/ha.
4. The average pasture cover required on farm at end of first round therefore needs to be :

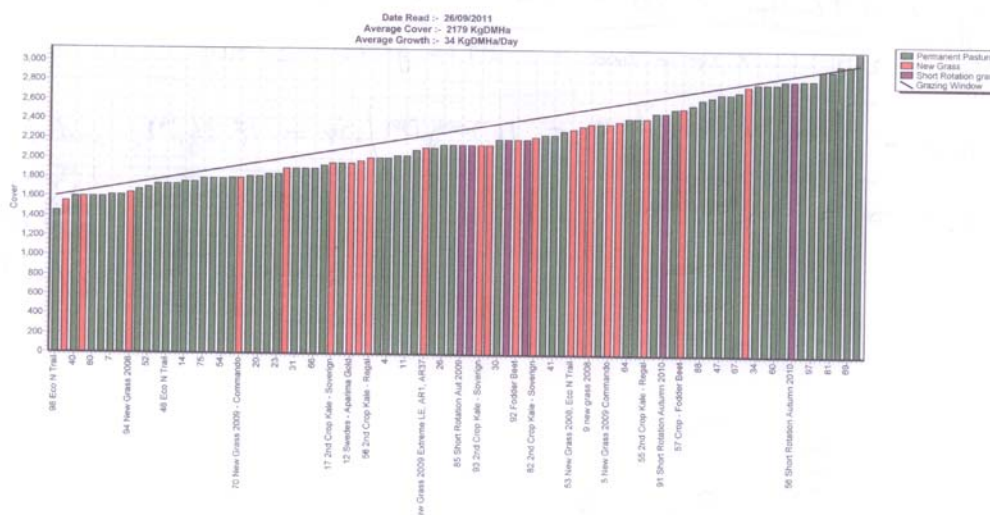
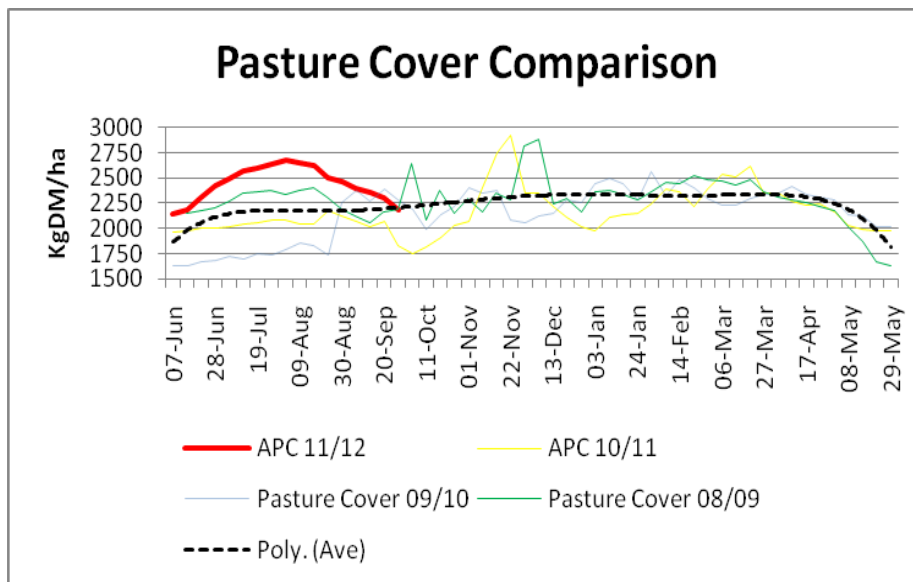
$$(\text{Pre-grazing covers required (2900kgDM/ha)} + \text{Residual (1600 kgDM/ha)}) / 2 = 2250\text{kgDM/ha.}$$
 There will be no quality issues with these higher APC, as all paddocks were grazed down to 1600kgDM during the first round. Cows were deliberately followed with N during the first round to achieve these pre-grazing levels and APC to prevent cows being underfed during the 2nd round.
5. The average growth of pasture measured at SDF since inception has been 51kgDM/ha/day during the first 4 weeks of the 2nd round (last week of September and first 3 weeks of October). The round length during the 2nd round cannot be faster than 25 days as 25 days x 51kgDM/day + 1600 kgDM/ha residual will give a re-growth and pre-grazing cover of around 2900kgDM. Going faster during the 2nd round will result in a feed deficit at the start of the 3rd round and PSM.
6. Cow's expected to produce 2.2kgMS need to be offered around 240MJME or around 20kgDM/cow/day. Pre-grazing covers of 2900kgDM/ha will supply about 18kgDM/cow/day. This could lead to a lower milk production or residuals. Cow's will be supplemented in the shed so that the desired residual is maintained. Clearly, at this level of production and stocking rate, balance date is not achieved by end of first round.
7. The 2nd round will be based on a 25 day round – offering 10.5ha/day.

PASTURE GROWTH AND AVERAGE PASTURE COVER

1. Average growth rate was only 34kgDM/ha/day – lower than the expected 50 kgDM/day.
2. APC is 2,179kgDM/ha. Pre-grazing covers averaged 3,300kgDM/ha with residuals of 1,600kgDM/ha.
3. Growth rate for this week in graph below. The growth rate for the past week was 16kg/day below average.



4. Below is a graph comparing the pasture cover for this year compared to the last two seasons. APC is back on track.
5. The higher covers observed on the right of the feed wedge in the previous 7 week' graphs (grass pushed forward) are no longer there, as the first round has been completed.
6. The covers of the paddocks to be grazed at the start of the 2nd round are back on track. These paddocks had received N to help boost growth. The wet weather has prevented N being applied this week and there appears to be a small deficit looming in 5-7 days time.



NITROGEN AND FERTILISER USE

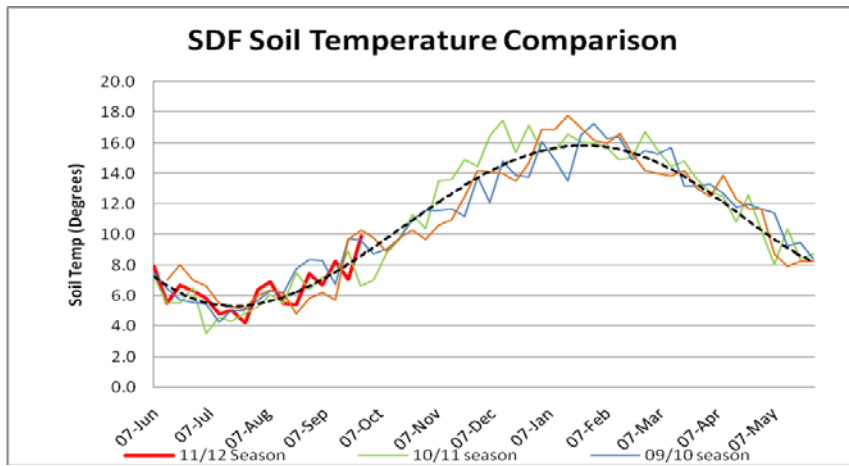
7. No N applied due to wet conditions.
8. Cows will be followed with Ammo 31 and then urea.

ANIMAL HEALTH & BCS

9. 12 cows are being treated for lameness, 8 for mastitis, 6 for other causes.
10. All cows are receiving the following (g/cow) through the Dosatron: 5g Ravensdown mix, 2.5 ml selenium, 2.5g copper sulphate and 60g magnesium chloride.
11. Springers pastures are dusted with magnesium oxide.
12. Colostrum cows pastures are also dusted with magnesium oxide plus limeflour.

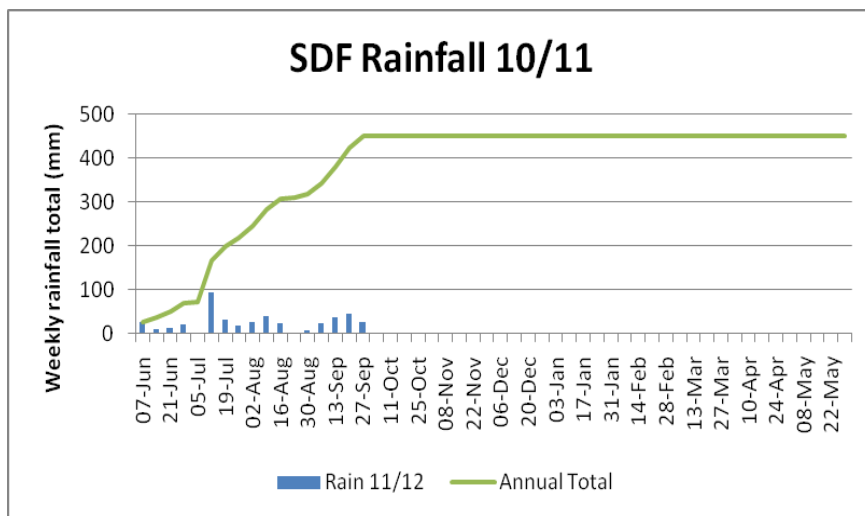
CLIMATE DATA AND COMPARISONS

13. Soil temperatures at 9 am have averaged 9.9°C for the previous week – up 2.7C.
14. The graph below shows how the average weekly 9am (10cm) soil temperature is tracking throughout the season and compares against the last two seasons.



15. The farm had a total of 26mm rain the past week.

16. The graph below shows the weekly rainfall and accumulated total for the season.



FUTURE MANAGEMENT PLANNING

1. Ensure correct areas are allocated – and supplement added or removed depending on residuals
2. Ensure pasture walks are done weekly to monitor APC vs budgeted APC.
3. Follow cows with N to ensure maximum pasture growth

The WEEKLY management meeting will be on **Tuesday, 4 October 2011 @ 11am.**

On behalf of the **Management Group** Barry Bethune (Farm Manager), Sharn Roskam (Farm Supervisor), and Howard de Klerk (Consultant - DairyNZ).

SDF Farm Walk Notes

Tuesday, 20 September 2011

Total Effective Ha: 295ha

Winter Crop Ha: 33ha

Area in Grass Ha: 262ha

CRITICAL ISSUES FOR THE SHORT TERM

1. Pasture allocation and utilisation through first round
2. Appropriate supplementation
3. Managing dry cows on crop
4. Preventing damage to paddocks in wet weather
5. Animal health issues around calving
6. Calf rearing management

COW NUMBERS

1. 763 cows on farm – 0 deaths – 7 deaths to date & 19 culls.
2. 642 cows have calved – 40 in past week.
3. 565 milked TAD; 48 in colostrum mob; 29 in penicillin mob.
4. 121 springers on grass.

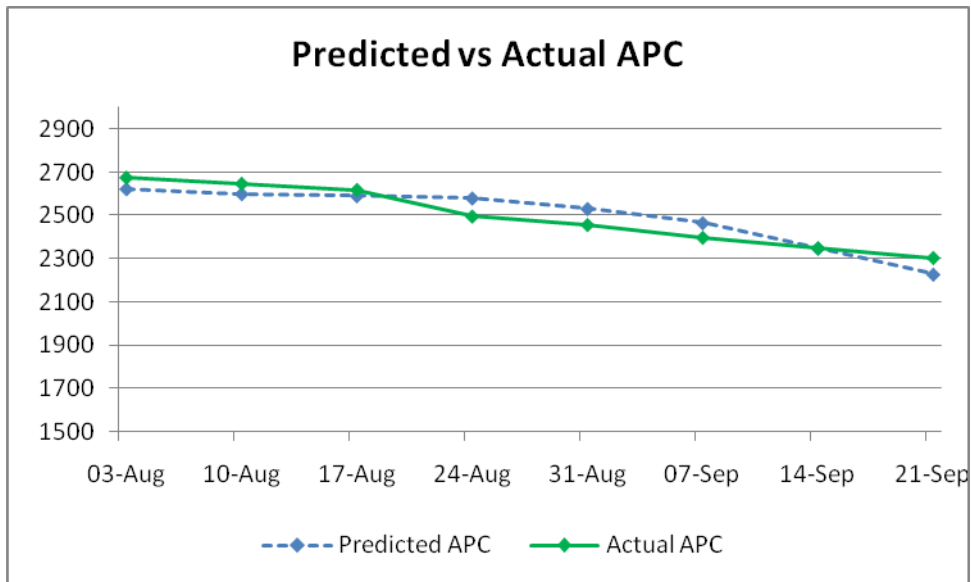
MILK PRODUCTION

	This week	↑ or ↓ compared to last week	↑ or ↓ compared to last year
Per cow (kgMS/cow/day)	1.99	↑ 0.01	
Per ha (kgMS/ha/day)	4.19	↑ 0.25	
kgMS/day	1098	↑ 78	
Month to date %			↓ 19
Season to date %			↓ 8

5. 27,157 kgMS delivered to date. Production is currently behind last season due to a slower calving pattern.
6. SCC 154k cells/ml.

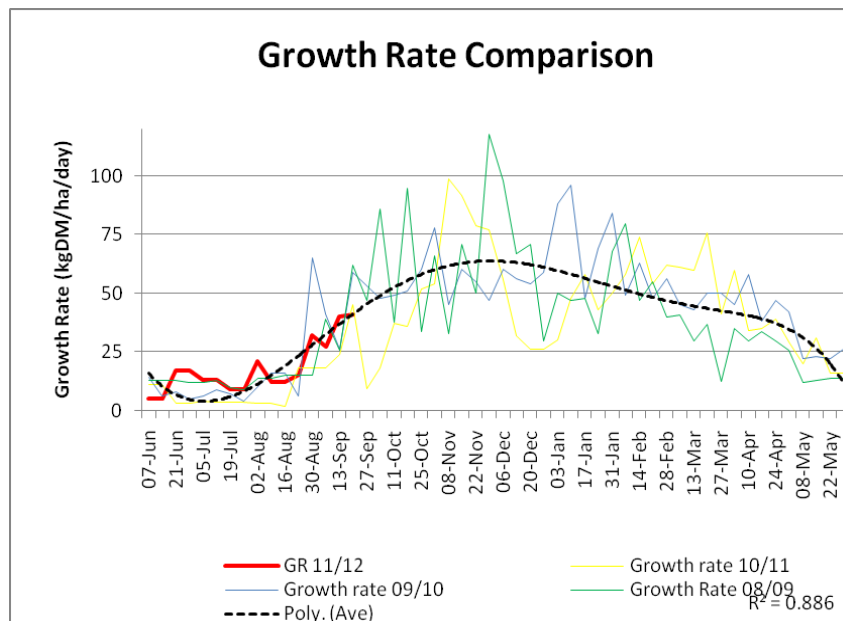
PASTURE MANAGEMENT AND FEEDING LEVELS

7. Colostrum and milkers offered 95m²/day - no silage.
8. Springers offered 50m²/day plus 4kg silage. Dry cows offered 3kg silage.
9. This week 50.12 ha were used – 37 day round – 54 ha and a 34 day round was budgeted.
10. APC is on track, slightly higher than predicted due to a slightly longer round length. Once the remaining 8 paddocks in the first round have been grazed (4 days time) the APC should be on target at around 2200 kgDM/ha.
11. The in-shed feeder has been installed and a small amount of 70% PKE: 30% Barley mix has been trickled into the system to get the cows used to the feed. The ratio ordered was 70% Barley:30% PKE so intake has been very slow on the high PKE inclusion. This will hopefully be corrected in the coming week.

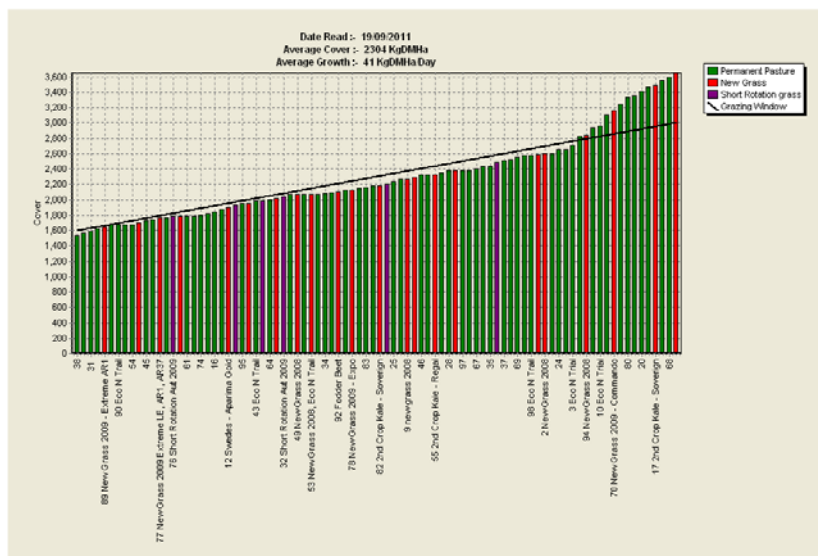
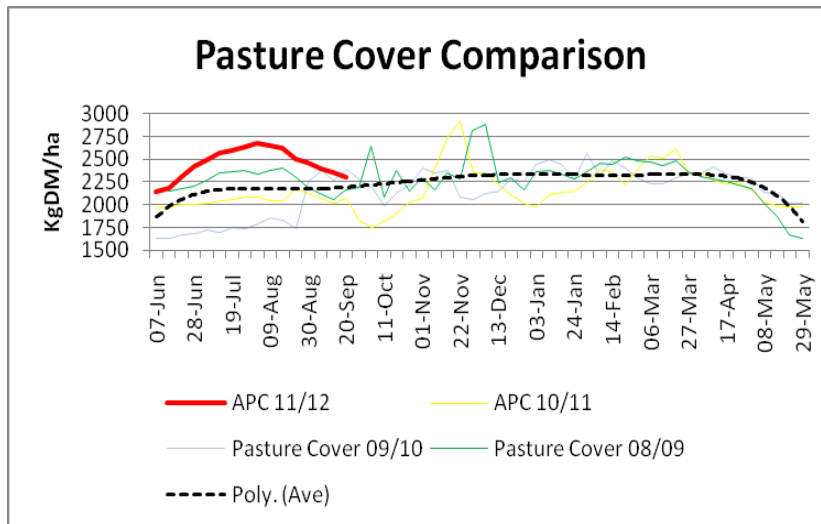


PASTURE GROWTH AND AVERAGE PASTURE COVER

12. Average growth rate was 41kgDM/ha/day – lower than the expected 50 kgDM/day.
13. APC is 2,304kgDM/ha. Pre-grazing covers averaged 3,591kgDM/ha with residuals of 1,639kgDM/ha. The higher residuals were due to wet conditions.
14. Growth rate for this week in graph below. The growth rate for the past week was 9kg/day below average.



15. Below is a graph comparing the pasture cover for this year compared to the last two seasons.
16. The higher cover paddocks at the right of the feed wedge are the remaining (yet to graze) paddocks of the first round. These should be grazed by the end of the week.
17. The covers of the paddocks to be grazed at the start of the 2nd round are back on track. These paddocks have received N to help boost growth.



NITROGEN AND FERTILISER USE

18. No N applied due to wet conditions.
19. Cows will be followed with Ammo 31 until end of 1st round.

CROP MANAGEMENT

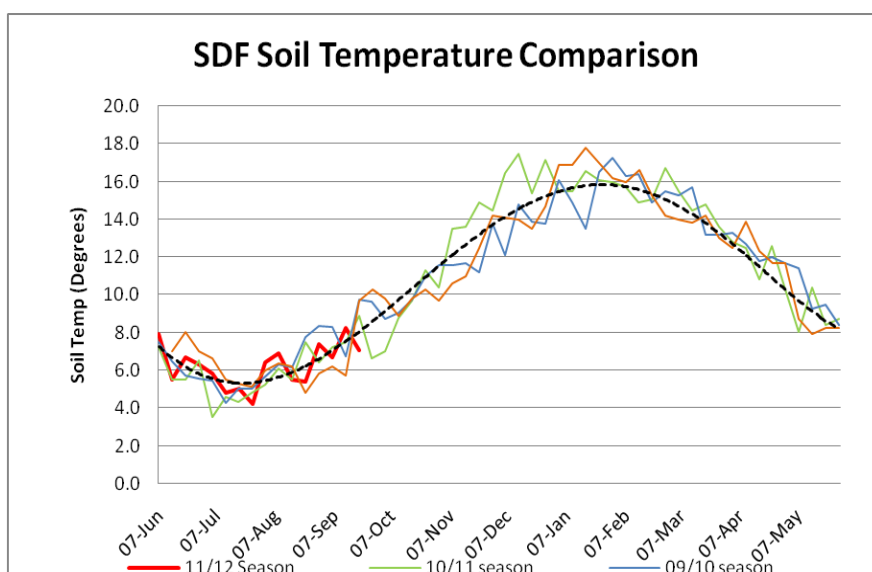
20. There are no more cows on crops.
21. Paddocks for next years crops have been identified, as well as cropped paddocks that will be either re-cropped or re-grassed.

ANIMAL HEALTH & BCS

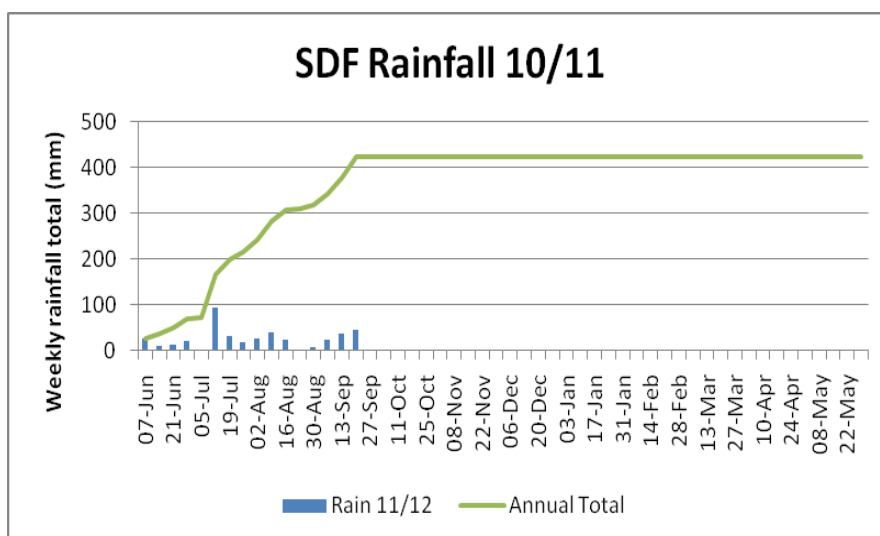
22. 10 cows are being treated for lameness, 10 for mastitis, 9 for other causes.
23. All cows are receiving the following (g/cow) through the Dosatron: 5g Ravensdown mix, 2.5 ml selenium, 2.5g copper sulphate and 60g magnesium chloride.
24. Springers pastures and silage are dusted with magnesium oxide.
25. Colostrum cows pastures are also dusted with magnesium oxide plus limeflour.

CLIMATE DATA AND COMPARISONS

26. Soil temperatures at 9 am have averaged 7.16°C for the previous week – down 1.09C.
27. The graph below shows how the average weekly 9am (10cm) soil temperature is tracking throughout the season and compares against the last two seasons.



28. The farm had a total of 45mm rain the past week.
29. The graph below shows the weekly rainfall and accumulated total for the season.



FUTURE MANAGEMENT PLANNING

1. Ensure correct areas are allocated – and supplement added or removed depending on residuals
2. Ensure pasture walks are done weekly to monitor APC vs budgeted APC.

The WEEKLY management meeting will be on **Tuesday, 27 September 2011 @ 11am.**

On behalf of the **Management Group** Barry Bethune (Farm Manager), Sharn Roskam (Farm Supervisor), and Howard de Klerk (Consultant - DairyNZ).

SDF Farm Walk Notes

Tuesday, 13 September 2011

Total Effective Ha: 295ha

Winter Crop Ha: 33ha

Area in Grass Ha: 262ha

CRITICAL ISSUES FOR THE SHORT TERM

1. Pasture allocation and utilisation through first round
2. Appropriate supplementation
3. Managing dry cows on crop
4. Preventing damage to paddocks in wet weather
5. Animal health issues around calving
6. Calf rearing management

COW NUMBERS

1. 763 cows on farm – 2 deaths – 7 deaths to date & 19 culls.
2. 602 cows have calved.
3. 551 milked TAD; 33 in colostrum mob; 18 in penicillin mob.
4. 161 springers on grass.

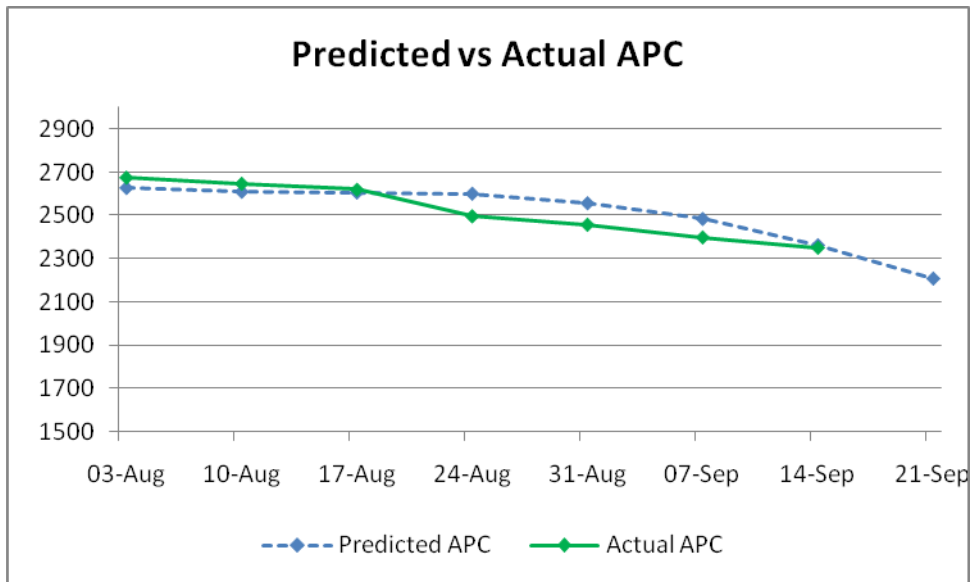
MILK PRODUCTION

	This week	↑ or ↓ compared to last week	↑ or ↓ compared to last year
Per cow (kgMS/cow/day)	1.98	↑ 0.06	
Per ha (kgMS/ha/day)	3.94	↑ 0.81	
kgMS/day	1020	↑ 213	
Month to date %			↓ 14.7
Season to date %			↓ 1.5

5. 19,621 kgMS delivered to date. Production is currently behind last season due to a slower calving pattern.
6. SCC 147k cells/ml.

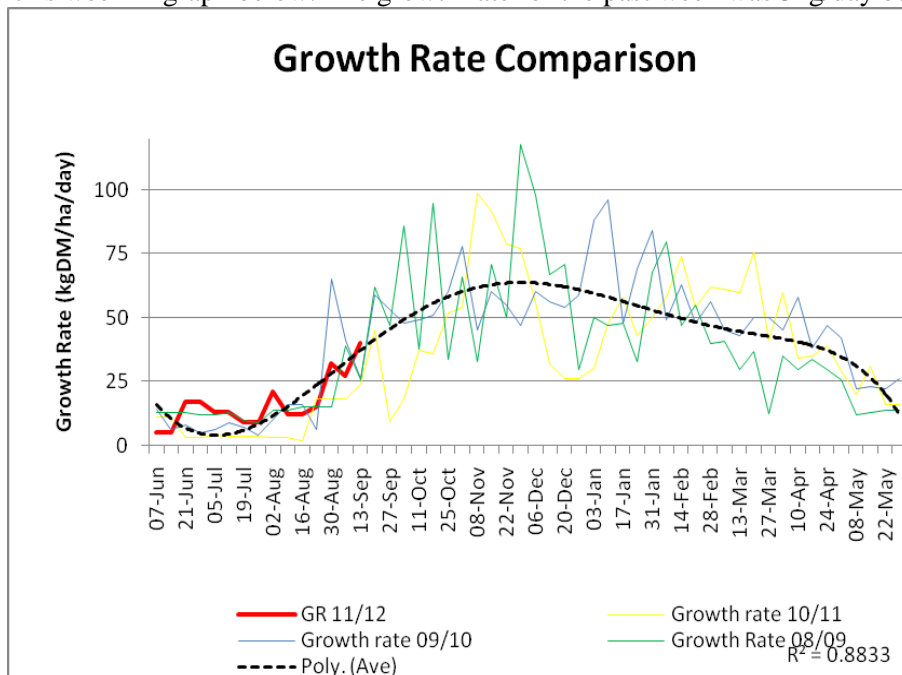
PASTURE MANAGEMENT AND FEEDING LEVELS

7. Colostrum and milkers offered 95m²/day - no silage
8. Springers offered 50m²/day plus 4kg silage. Dry cows offered 3kg silage
9. This week 43 ha were used – 43 day round – 49 ha and a 37 day round was budgeted.
10. APC is on track.

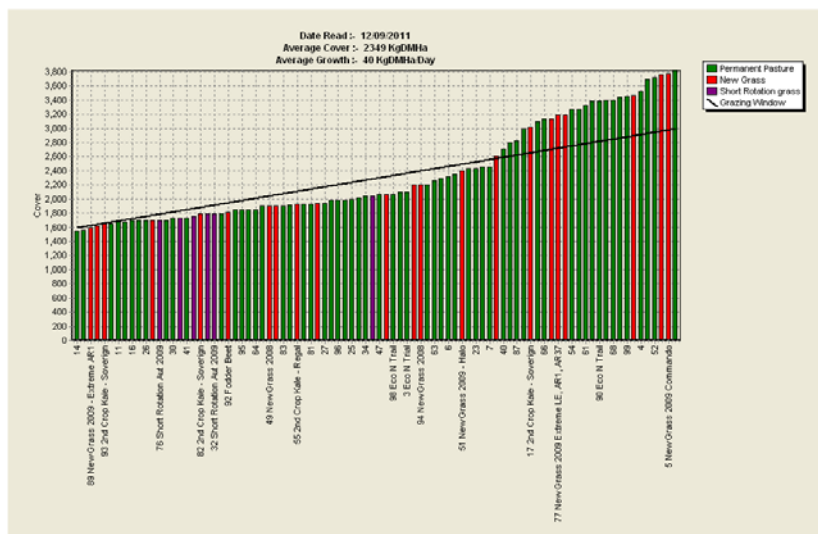
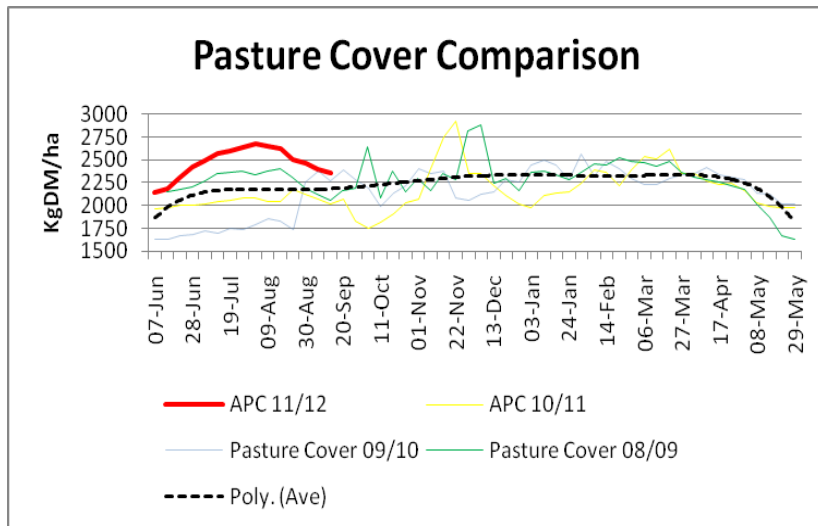


PASTURE GROWTH AND AVERAGE PASTURE COVER

11. Average growth rate was 40kgDM/ha/day – only slightly lower than the expected 45 kgDM/day.
12. APC is 2,349kgDM/ha. Pre-grazing covers averaged 3,550kgDM/ha with residuals of 1,630kgDM/ha. The higher residuals were due to wet conditions.
13. Growth rate for this week in graph below. The growth rate for the past week was 5kg/day below average.



14. Below is a graph comparing the pasture cover for this year compared to the last two seasons.
15. The feed wedge shows the higher covers of the paddocks remaining in the first round.
16. The covers of the paddocks to be grazed at the start of the 2nd round are only slightly below required. There should be another 10 days more growth before regrazing them and at the average growth rates they should reach pregrazing targets. These paddocks have received N to help boost growth.



NITROGEN AND FERTILISER USE

17. 38 kgN was applied to 59ha.
18. Cows will be followed with Ammo 31 until end of 1st round.

CROP MANAGEMENT

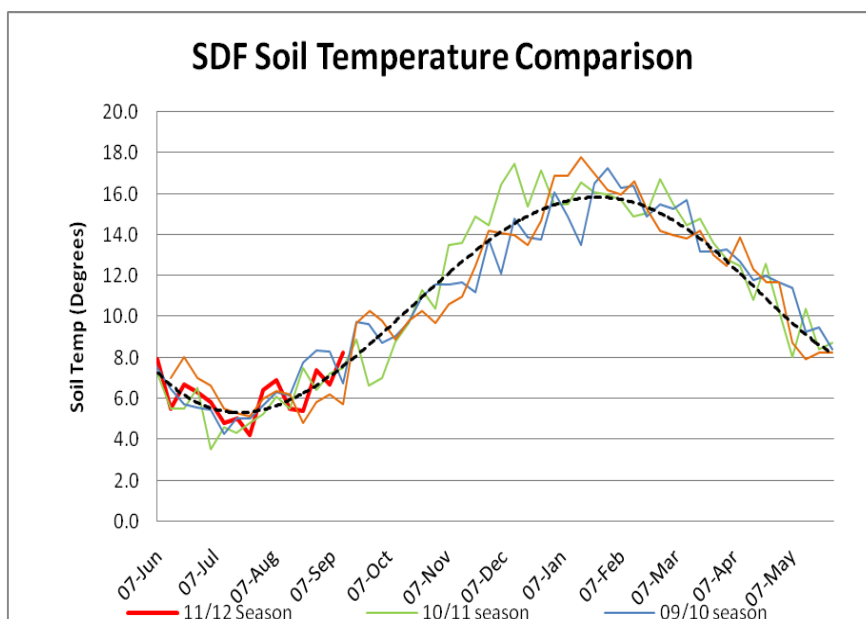
19. There are no more cows on crops.

ANIMAL HEALTH & BCS

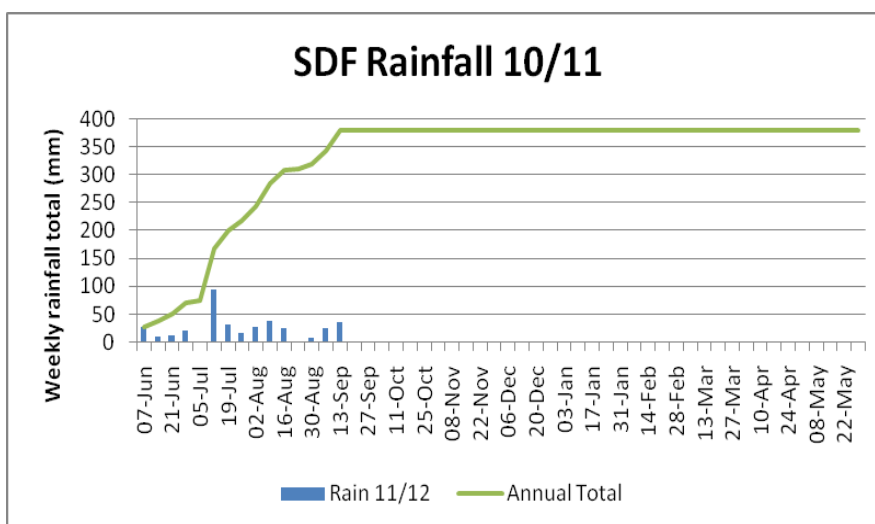
20. 2 deaths.
21. 6 cows are being treated for lameness, 11 for mastitis, 1 for other causes.
22. All cows are receiving the following (g/cow) through the Dosatron: 5g Ravensdown mix, 2.5 ml selenium, 2.5g copper sulphate and 60g magnesium chloride.
23. Springers pastures and silage is dusted with magnesium oxide.
24. Colostrum and milkers pastures and silage are also dusted with magnesium oxide plus limeflour.

CLIMATE DATA AND COMPARISONS

25. Soil temperatures at 9 am have averaged 8.25°C for the previous week – up 1.6C.
26. The graph below shows how the average weekly 9am (10cm) soil temperature is tracking throughout the season and compares against the last two seasons.



27. The farm had a total of 36mm rain the previous week.
28. The graph below shows the weekly rainfall and accumulated total for the season.



FUTURE MANAGEMENT PLANNING

1. Ensure correct areas are allocated – and supplement added or removed depending on residuals
2. Ensure pasture walks are done weekly to monitor APC vs budgeted APC.

The WEEKLY management meeting will be on **Tuesday, 20 September 2011 @ 11am.**

On behalf of the **Management Group** Barry Bethune (Farm Manager), Sharn Roskam (Farm Supervisor), and Howard de Klerk (Consultant - DairyNZ).

SDF Farm Walk Notes

Tuesday, 6 September 2011

Total Effective Ha: 295ha
 Winter Crop Ha: 33ha
 Area in Grass Ha: 262ha

CRITICAL ISSUES FOR THE SHORT TERM

1. **Pasture allocation and utilisation through first round**
2. **Appropriate supplementation**
3. **Managing dry cows on crop**
4. **Preventing damage to paddocks in wet weather**
5. **Animal health issues around calving**
6. **Calf rearing management**

COW NUMBERS

1. 784 cows on farm – 0 death – 5 deaths to date.
2. 527 cows calved.
3. 427 milked TAD; 78 in colostrum mob; 22 in penicillin mob.
4. 133 springers on grass and 124 on crop.

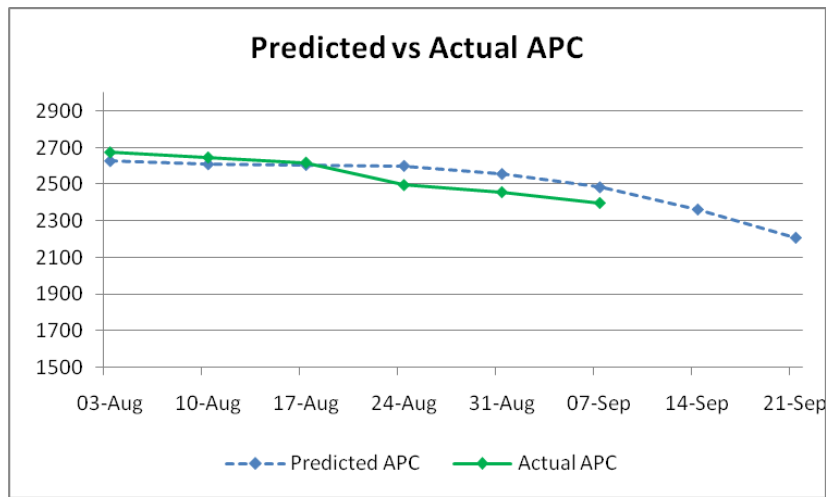
MILK PRODUCTION

	This week	↑ or ↓ compared to last week	↑ or ↓ compared to last year
Per cow (kgMS/cow/day)	1.92	↑ 0.05	
Per ha (kgMS/ha/day)	3.13	↑ 0.87	
kgMS/day	820	↑ 228	
Month to date %			↓ 20
Season to date %			↑ 4

5. 12,390 kgMS delivered to date.
6. SCC 170k cells/ml.

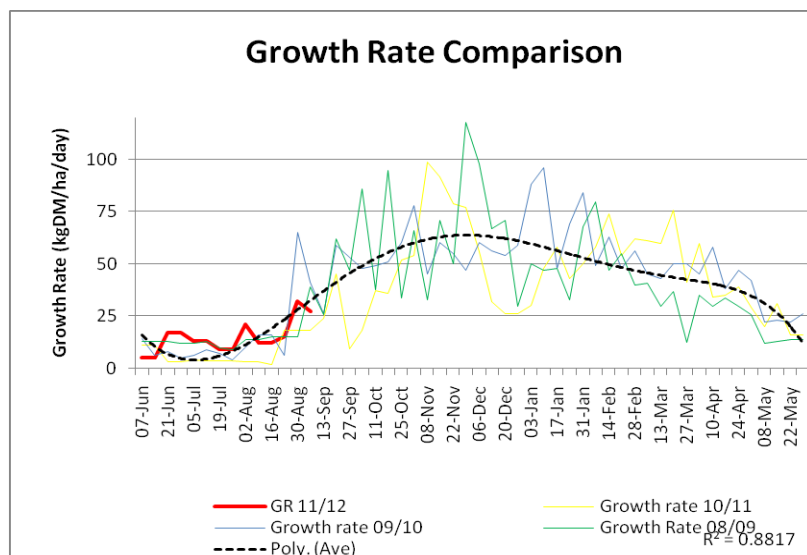
PASTURE MANAGEMENT AND FEEDING LEVELS
--

7. Colostrum and milkers offered 85m²/day plus 2kgDM silage.
8. Springers offered 50m²/day plus 4kg silage.
9. This week 38 ha were used – 48 day round – 41 ha and a 45 day round was budgeted.
10. APC is still slightly lower than predicted for this week by SRP. This is still mainly due to the snow event.
11. No changes will be made to the planned first round. The paddocks grazed this week were treated with gibberellic acid. No further paddocks will be treated as expected growth rates should meet demand.
12. The in shed feeder is currently being installed.

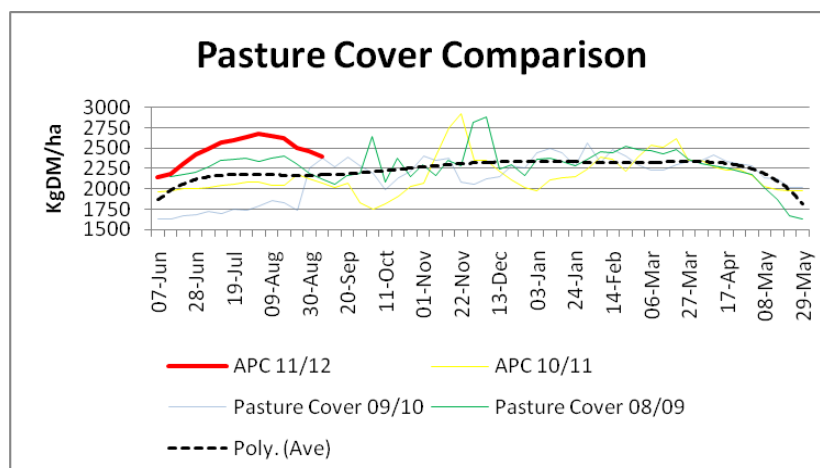


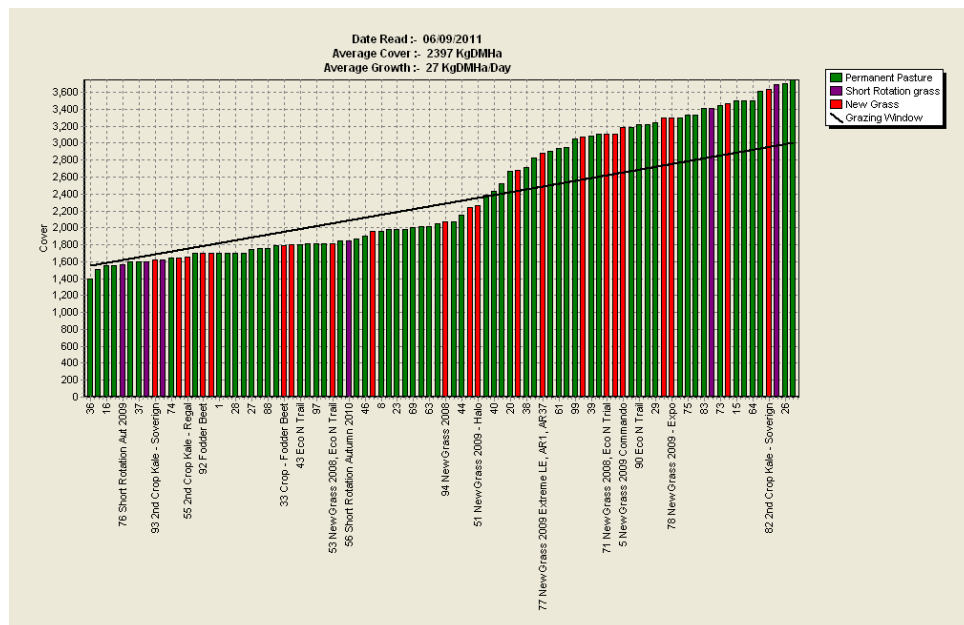
PASTURE GROWTH AND AVERAGE PASTURE COVER

13. Average growth rate was 27kgDM/ha/day – lower than the expected 40 kgDM/day.
14. APC is 2,397kgDM/ha. Pre-grazing covers averaged 3,400kgDM/ha with residuals of 1,560kgDM/ha.
15. Growth rate for this week in graph below. The growth rate for the past week was 13kg/day below average.



16. Below is a graph comparing the pasture cover for this year compared to the last two seasons.





NITROGEN AND FERTILISER USE

17. 40 kgN was applied to 70ha.
18. Cows will be followed with Ammo 31 until end of 1st round.

CROP MANAGEMENT

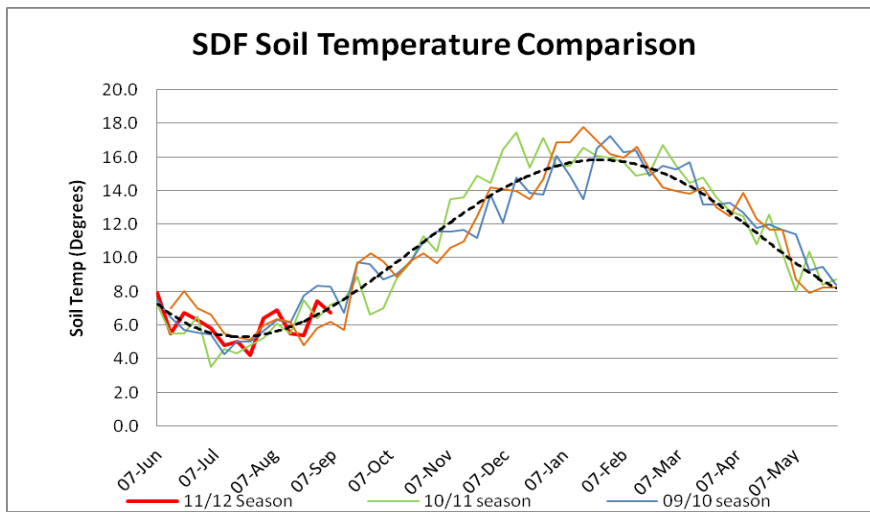
19. There are currently 124 cows on crop.
20. This will be the last week cows are on crop – will all be drafted onto pasture.

ANIMAL HEALTH & BCS

21. 0 deaths.
22. 6 cows are being treated for lameness, 12 for mastitis, 4 for retained membranes.
23. All cows are receiving the following (g/cow) through the Dosatron: 5g Ravensdown mix, 2.5 ml selenium, 2.5g copper sulphate and 60g magnesium chloride.
24. Springers pastures and silage is dusted with magnesium oxide.
25. Colostrum and milkers pastures and silage are also dusted with magnesium oxide plus limeflour.

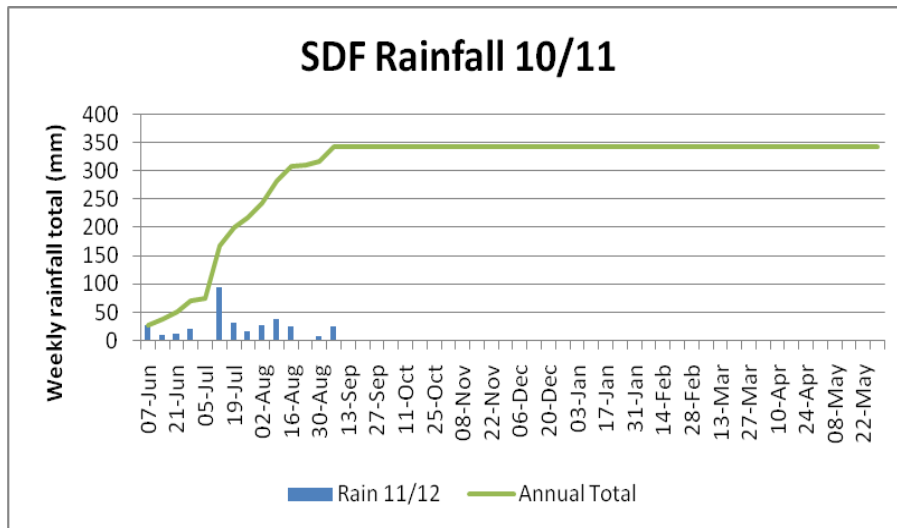
CLIMATE DATA AND COMPARISONS

26. Soil temperatures at 9 am have averaged 6.7°C for the previous week – down 0.7C.
27. The graph below shows how the average weekly 9am (10cm) soil temperature is tracking throughout the season and compares against the last two seasons.



28. The farm had a total of 25mm rain the previous week.

29. The graph below shows the weekly rainfall and accumulated total for the season.



FUTURE MANAGEMENT PLANNING

1. Draft out remaining springing cows – transition onto grass.
2. Ensure correct areas are allocated – and supplement added or removed depending on residuals.
3. Ensure pasture walks are done weekly to monitor APC vs budgeted APC.

The WEEKLY management meeting will be on **Tuesday, 13 August 2011 @ 11am.**

On behalf of the **Management Group** Barry Bethune (Farm Manager), Sharn Roskam (Farm Supervisor), and Howard de Klerk (Consultant - DairyNZ).